

# Sarah Mildred Long Bridge Replacement | Kittery, ME & Portsmouth, NH

MaineDOT Stakeholders Meeting – May 31, 2017



**CIANBRO**



**MaineDOT**

*New Hampshire*  
**DOT**  
Department of Transportation



**FIGG** | Hardesty & Hanover Joint Venture



# Introductions

## Joyce Taylor

- MDOT Chief Engineer

## Kaven Philbrook

- Cianbro Project Manager

## Hank Cook

- Cianbro Construction Manager

## Jeff Folsom

- MDOT Project Manager

## Mike Franck

- Cianbro Safety Manager

## Pete Malikowski

- Cianbro Project Engineer

## Ron Taylor

- MDOT Resident

## Keith Wallace

- Assistant Resident



# Safety Update

**Total safe days: 961**

**Cianbro Recordable injuries: 0**

**TM's on-site: 102**

**Subcontractors: 25**

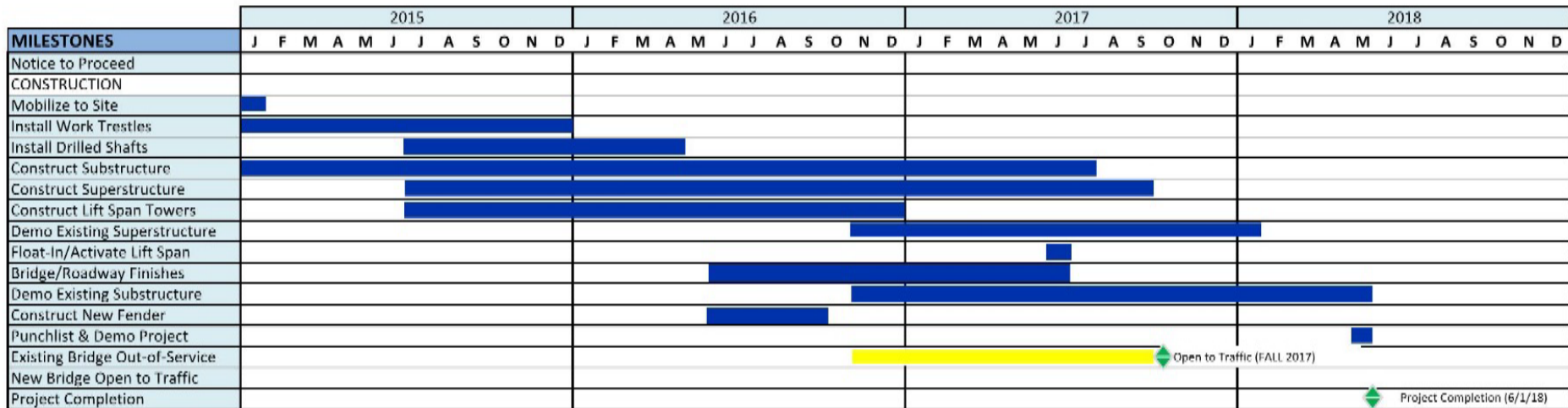
**Total on-site: 127**



Segment signing at Albacore Park



# Construction Schedule



Open to Traffic (FALL 2017)

Project Completion (6/1/18)



# Approach Substructure



Above - PV1-PV3 (vehicle piers) baseline



Above - PV3 with sheet piling removed



# Approach Shared Piers



Each of the (3) shared piers are underway – segment erection has started on the PS5 cantilevers



# Precast Tower Superstructure

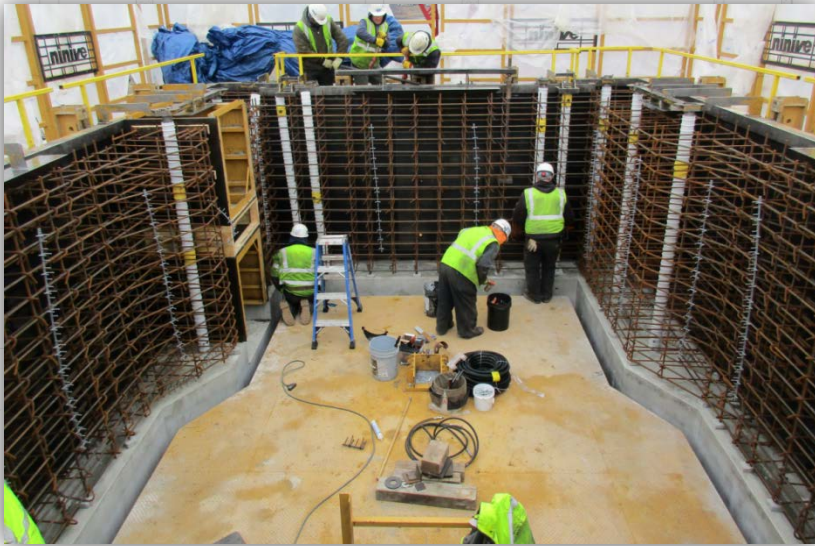
Total precast segments: 88

Completed segments: 88

Sheave walls have also been precast to expedite schedule.

Staining work will be completed this summer

Casting yard has been demobilized





# Precast Tower Superstructure



Tower precast segments have been erected

CIP Tower cap is complete at each tower



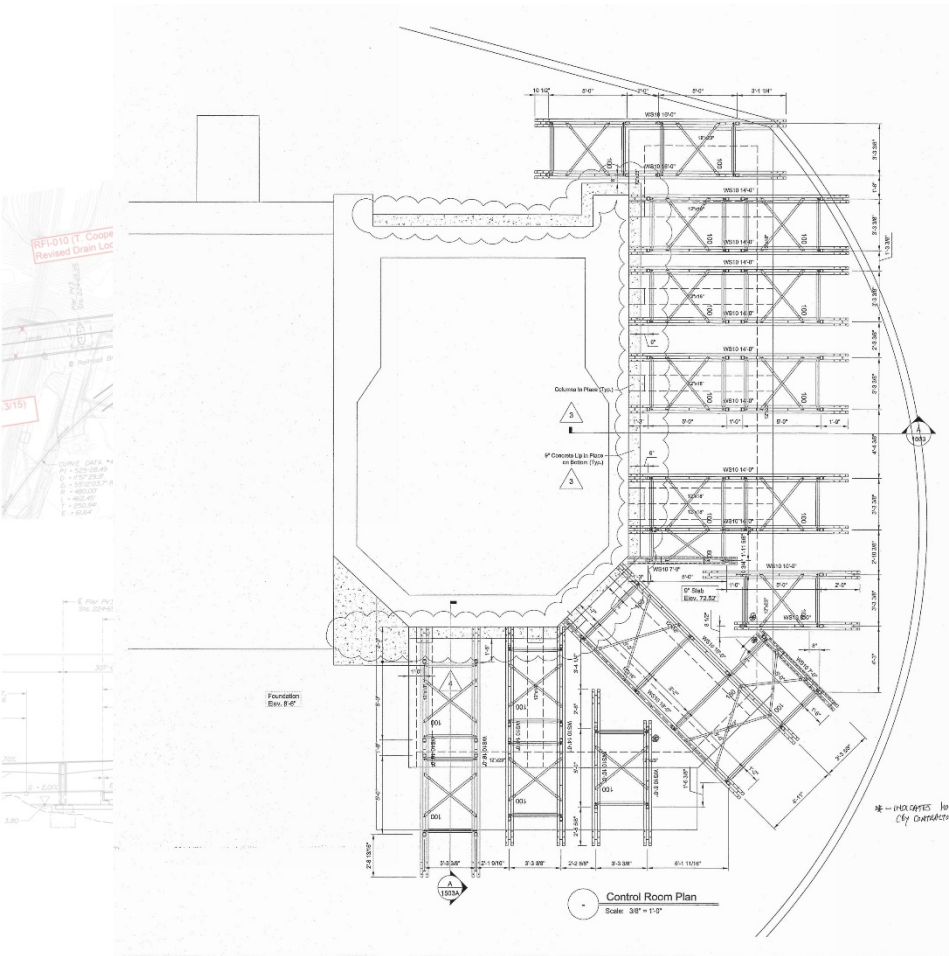
# Tower – Machinery Room



Kittery Tower & Machine Room –  
Vehicle beam in progress



# Tower – Control Room



Above – Shoring Plan of new control room in Portsmouth

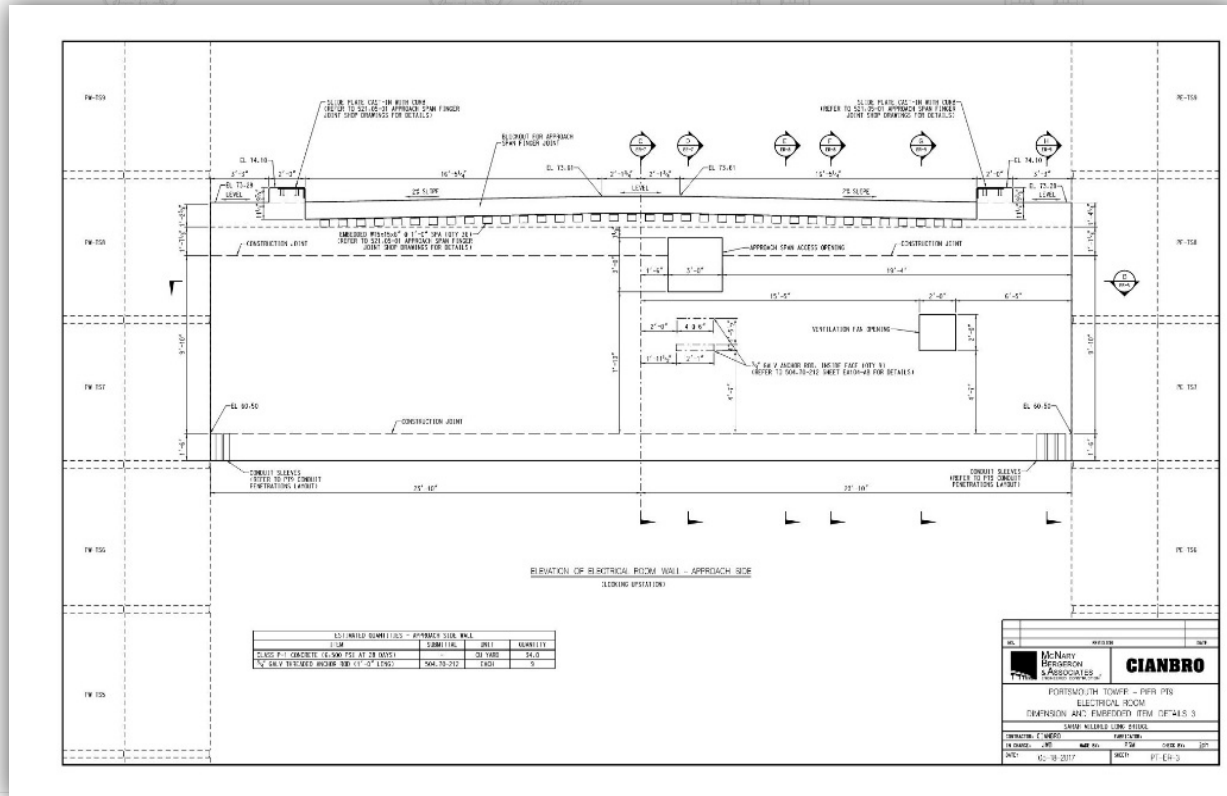


Cianbro engineers traveled to Chicago to test the new bridge control system



# Tower – Electrical Room & Vehicle Approach Beam

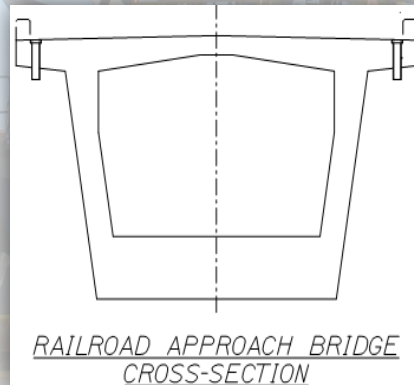
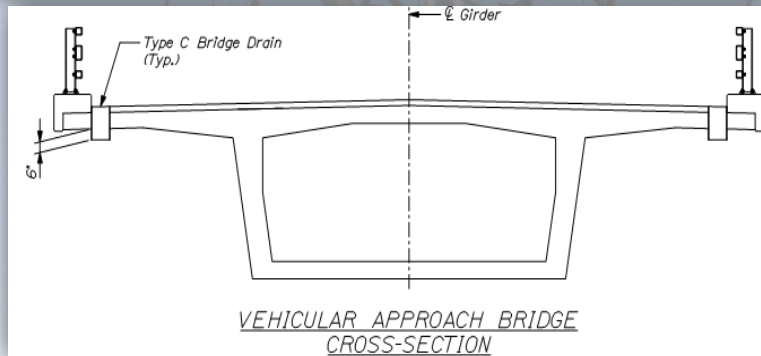
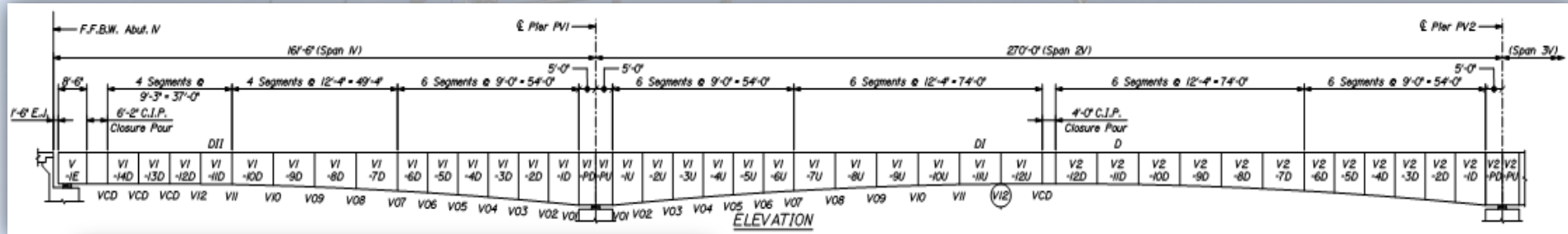
Below – Electrical Room Elevation



Above – Pier 9 Vehicle Approach Beam Concrete Placement

Work on Electrical Rooms Underway on both sides of the project  
 Mid-summer completion anticipated – electrical equipment installation follows

# Precast Approach Superstructure



Above – Portsmouth approach



# Precast Approach Superstructure



Sarah Mildred Long Bridge Replacement  
May 31, 2017 – **MaineDOT Stakeholders Meeting**

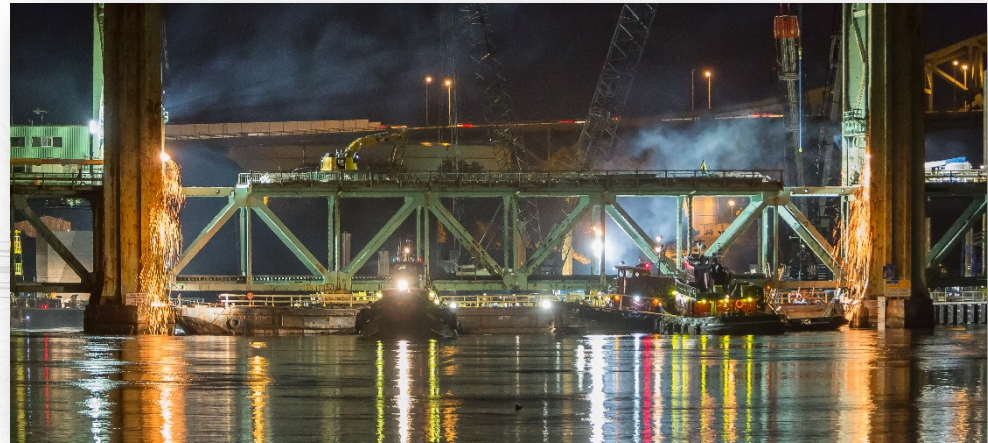


**CIANBRO**

**FIGG** | Hardesty & Hanover Joint Venture



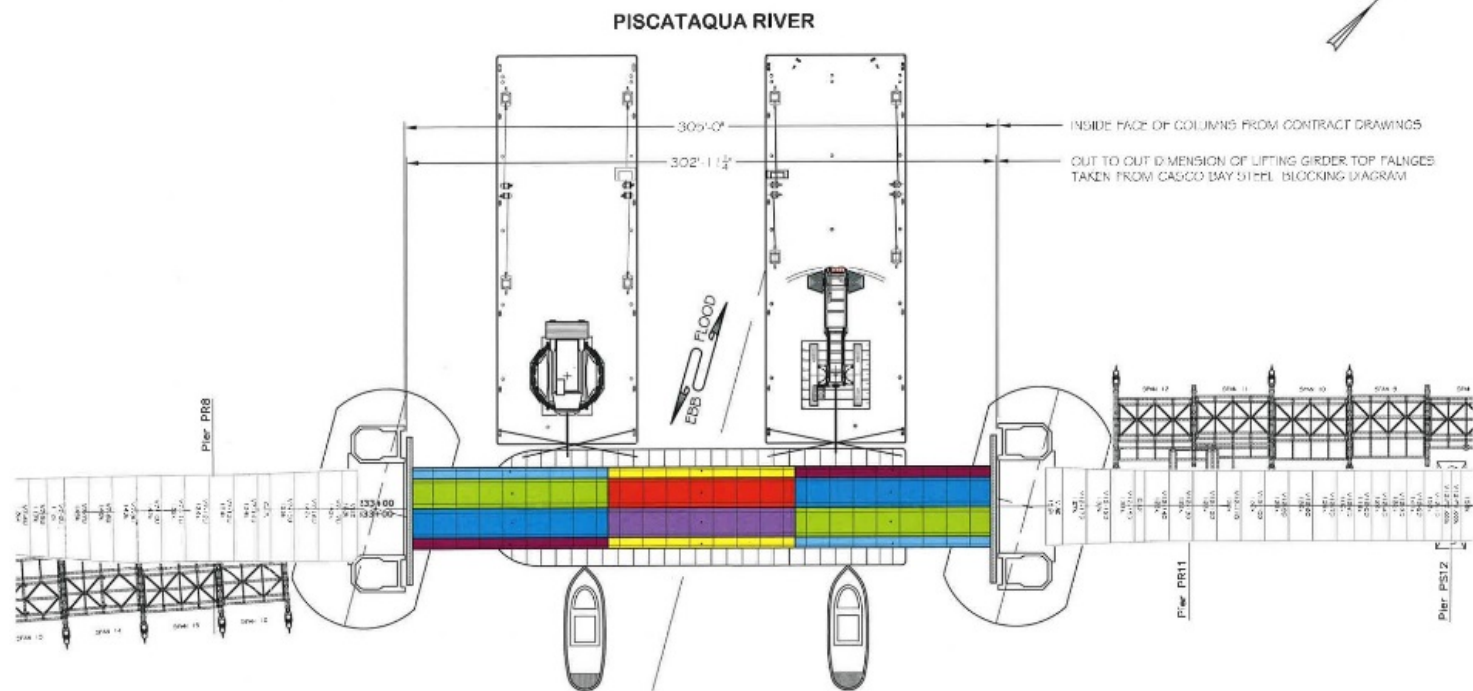
# Demolition



In-water piers in the main channel have been blasted. Atlantic Dismantling is currently removing demolition debris.



## Upcoming Work – Lift Span Float-in



PLAN VIEW

**CIANBRO**

## THE CONSTRUCTORS

Hunnewell Square  
PITTSFIELD, MAINE 04967  
(207) 487-3311

106 SARAH MILDRED LONG BRIDGE REPLACEMENT

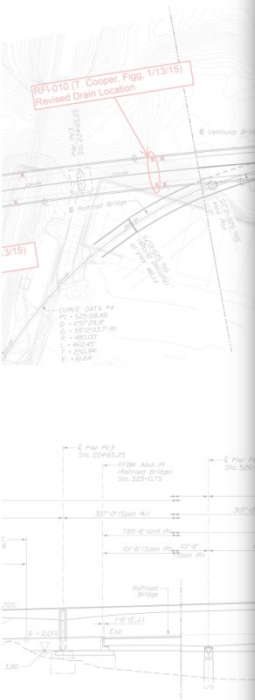
SHEET NO. 1 OF 2

LEON RE U20130

CALCULATED BY: J. G. L. T. E. DATE: 1/25/2020

CHECKED BY \_\_\_\_\_ DATE \_\_\_\_\_

# Upcoming Work – Lift Span Float-in



Sarah Mildred Long Bridge Replacement  
May 31, 2017 – **MaineDOT Stakeholders Meeting**

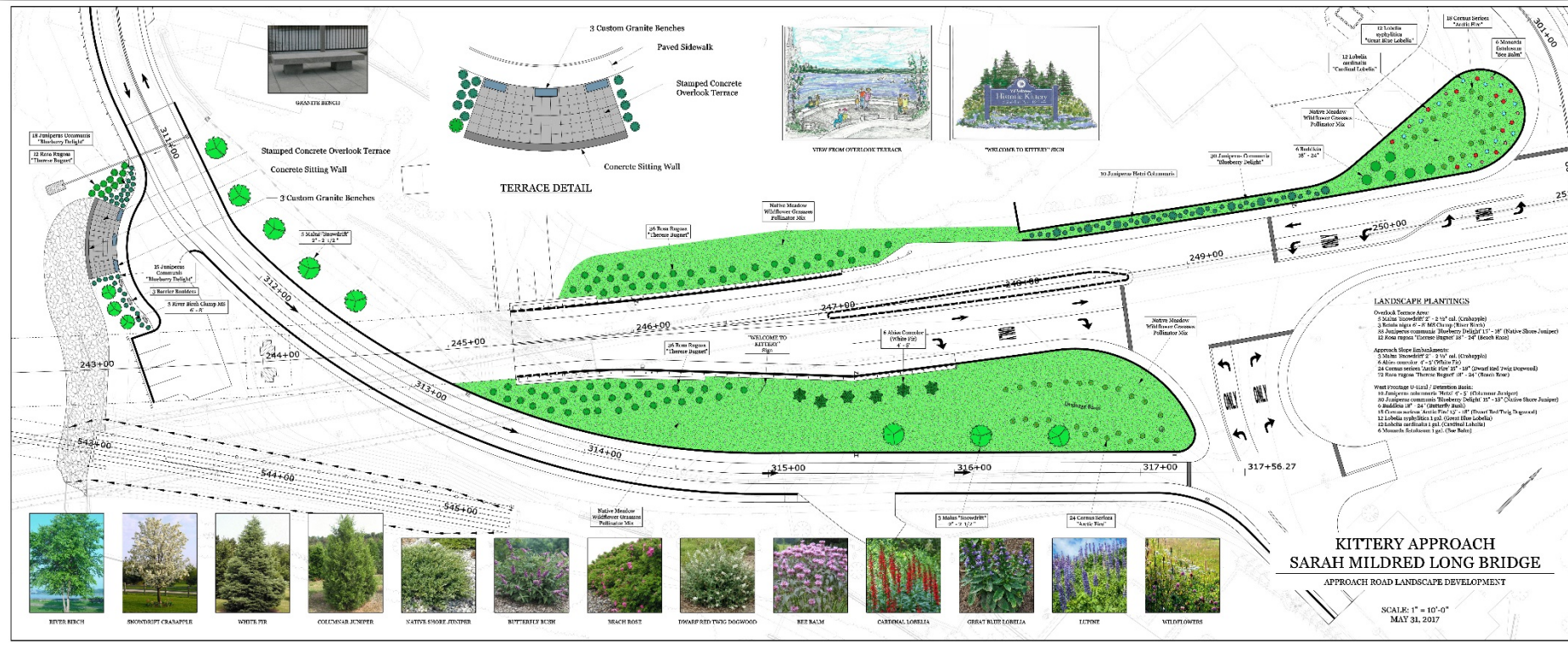


**CIANBRO**

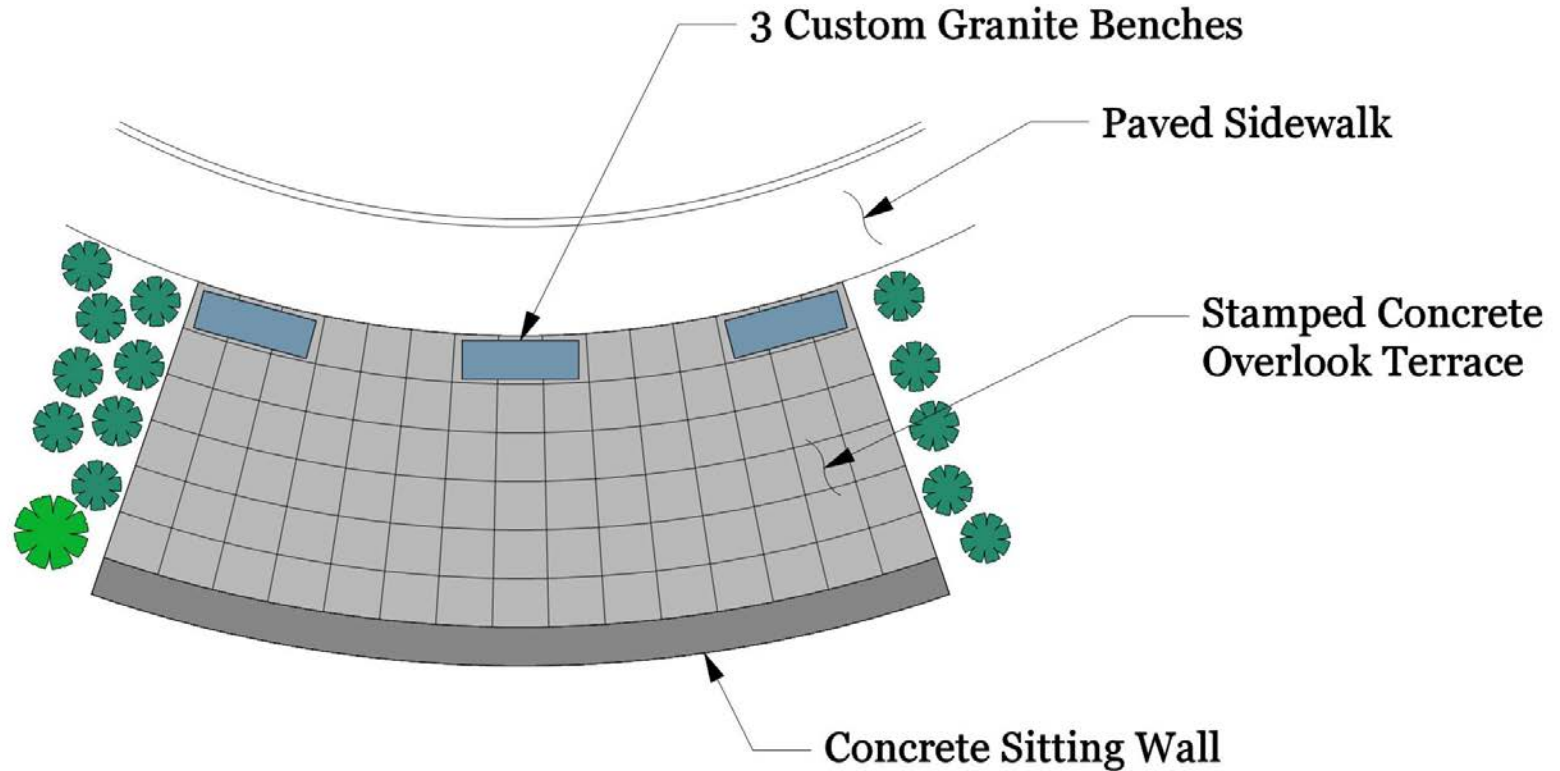
**FIGG | Hardesty & Hanover Joint Venture**



## Upcoming Work – Landscaping



# Upcoming Work – Landscaping



**TERRACE DETAIL**



# Upcoming Work – Landscaping



Sarah Mildred Long Bridge Replacement  
May 31, 2017 – **MaineDOT Stakeholders Meeting**



**CIANBRO**

**FIGG | Hardesty & Hanover Joint Venture**



# Upcoming Work – Landscaping



Sarah Mildred Long Bridge Replacement  
May 31, 2017 – **MaineDOT Stakeholders Meeting**



**CIANBRO**

**FIGG | Hardesty & Hanover Joint Venture**



# Questions

## The New Sarah Mildred Long Bridge Open to Traffic – Fall 2017

