

Maine-NH Connections Study

Steering and Stakeholder Committee Meetings

November 6, 2009

Kittery Trading Post

Agenda

- Welcome
- Fatal Flaw Analysis:
 - The process
 - Analysis to-date
- Scoring the Alternatives
- Next Steps

Fatal Flaw Process

- Developed scoring matrix based on P&N Statement
- Tested matrix with Stakeholder Committee and at public meeting
- With all possible combinations: 61 alternatives
- Broken down individually, total is 22
- More about how this will work....

Fatal Flaw Analysis to-date

- Developed capacity estimate for all three bridges
 - Present high points of Kevin's memo
- Engineered crossing locations for all alternatives
 - Show one map as illustration of how work done
- Mapped areas of potential resource impacts
 - Show one map as illustration of how work done

The Alternatives

No Build

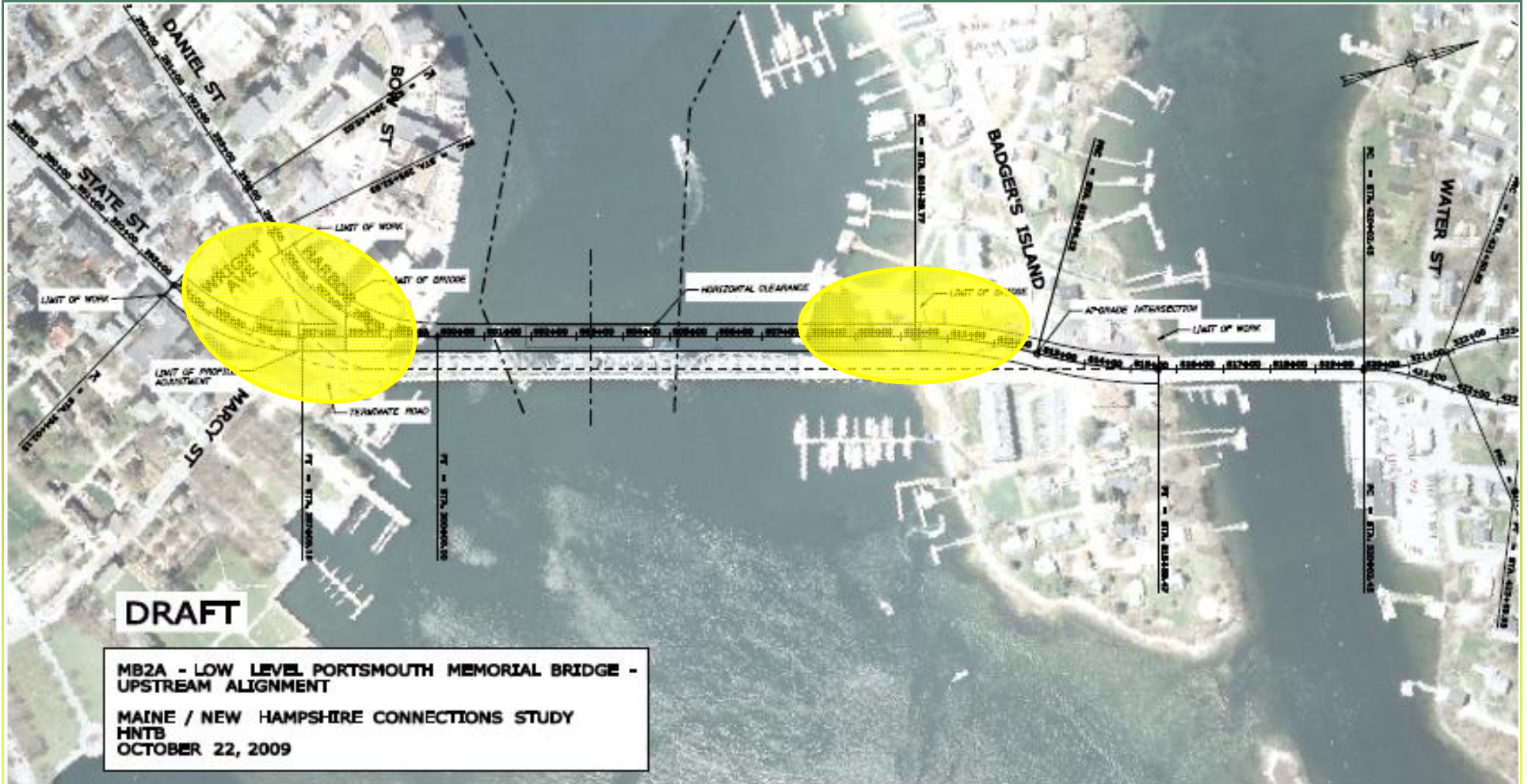
MB1

MB2

MB2A-Upstream



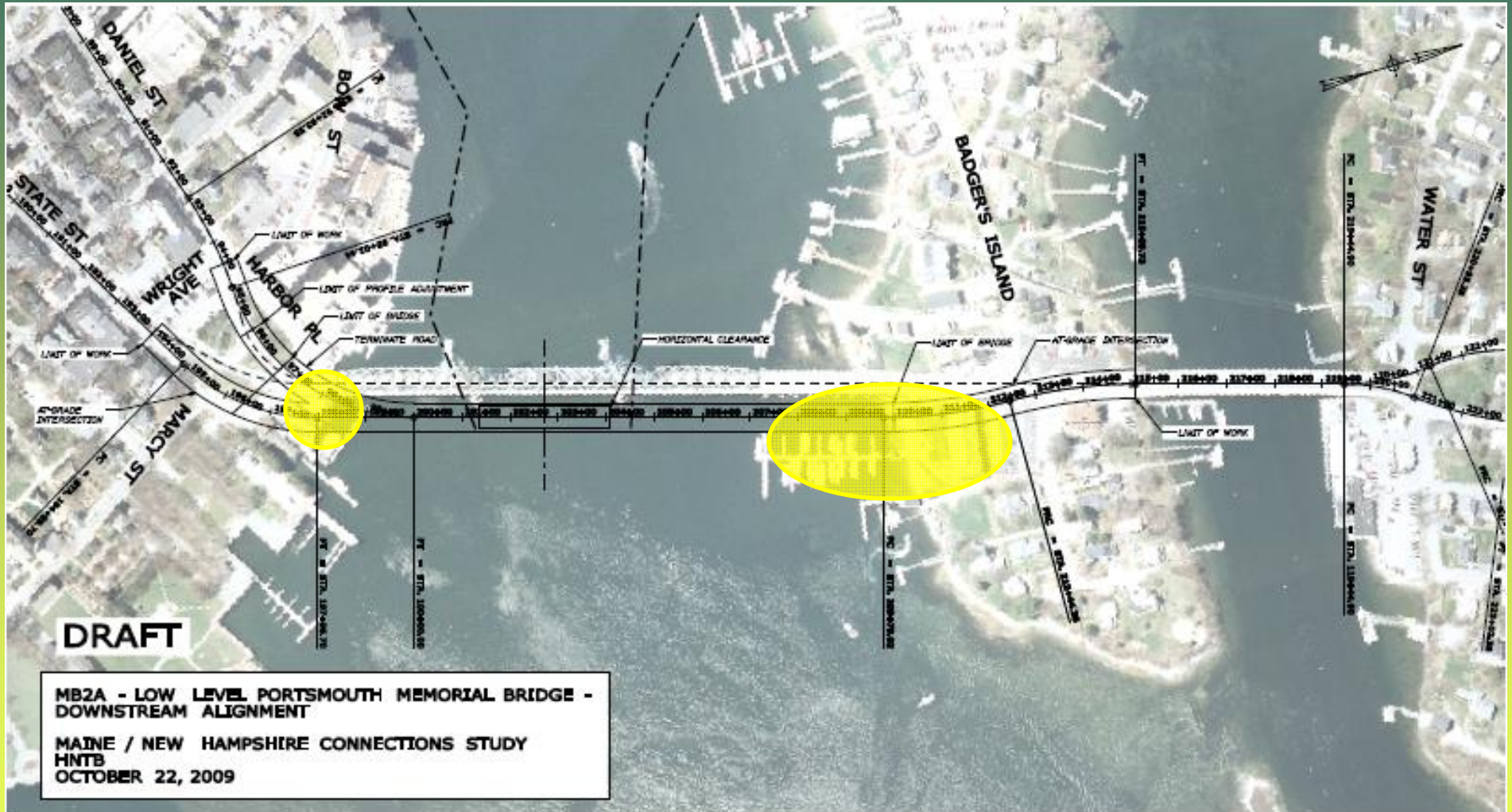
MB2A-Upstream



MB2A-Downstream



MB2A-Downstream



MB3



MB3



MB3A-Upstream



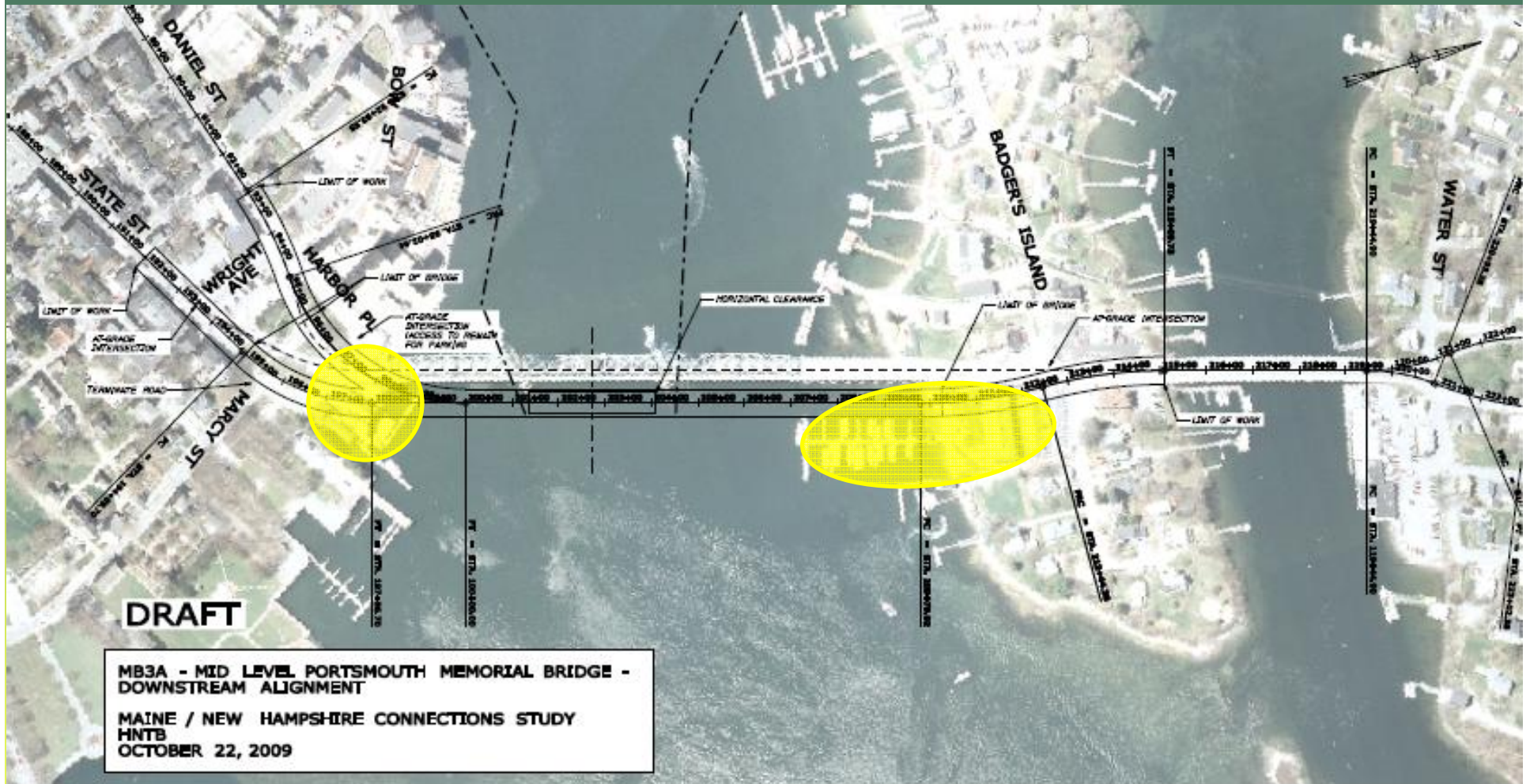
MB3A-Upstream



MB3A-Downstream



MB3A-Downstream



MB4



MB4



MB5

MB6

SL1

SL2

SL2A-Low Level Upstream



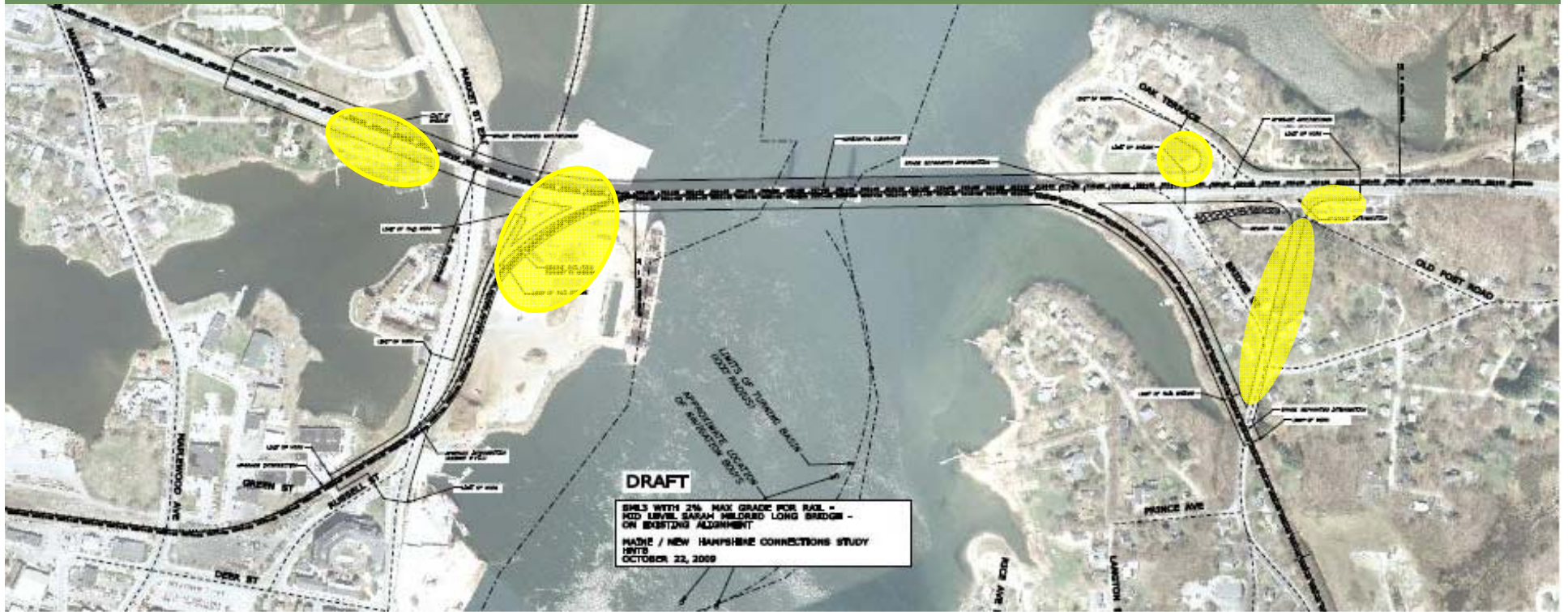
SL2A-Low Level Upstream



SL3-Mid Level with 2% Rail



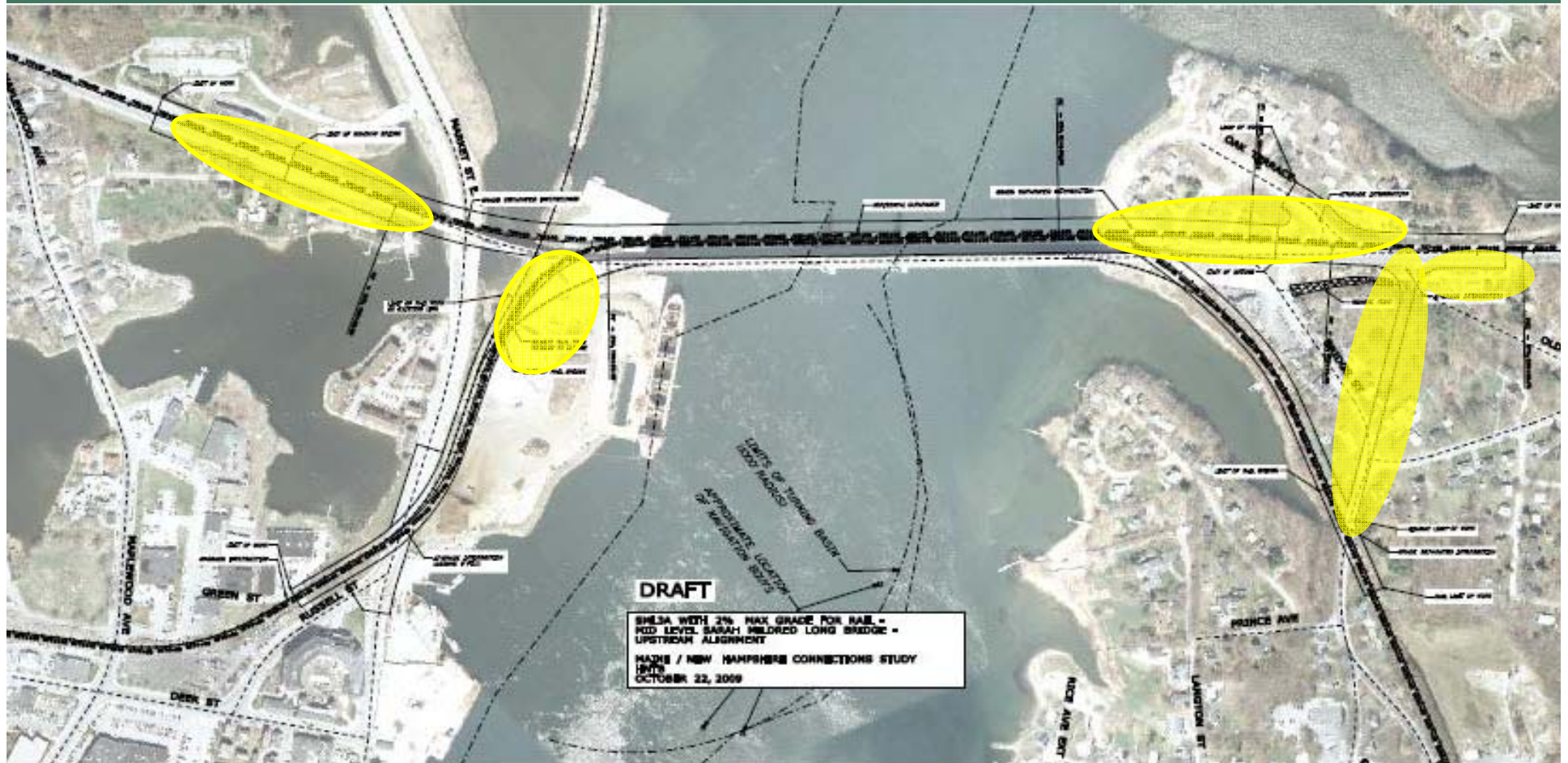
SL3-Mid Level with 2% Rail



SL3A-Mid Level Upstream with 2% Rail



SL3A-Mid Level Upstream with 2% Rail



SL4-High Level



SL4-High Level

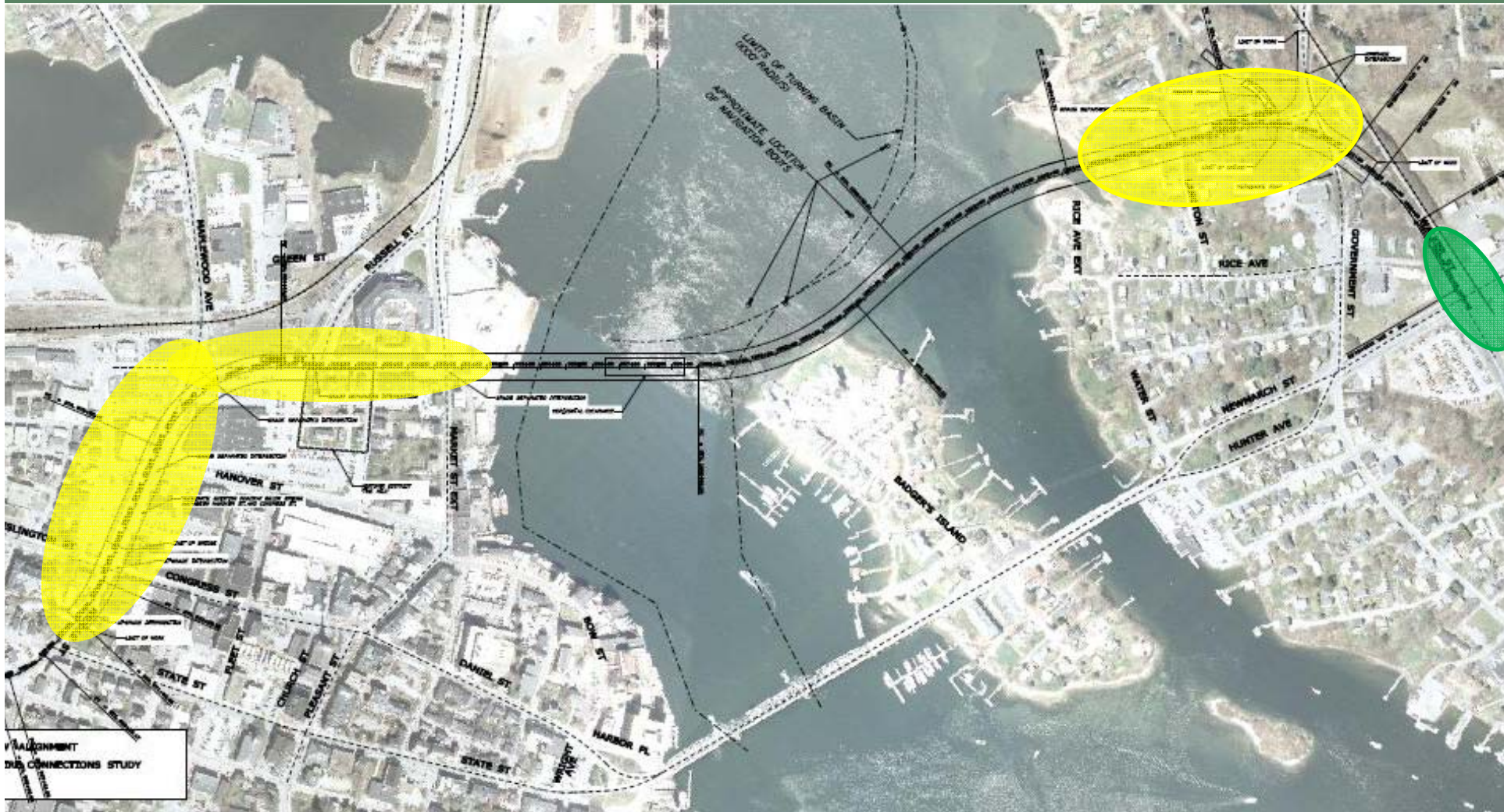


SL5

Alternative 1 - High Level



Alternative 1 - High Level



Alternative 1A - Low Level



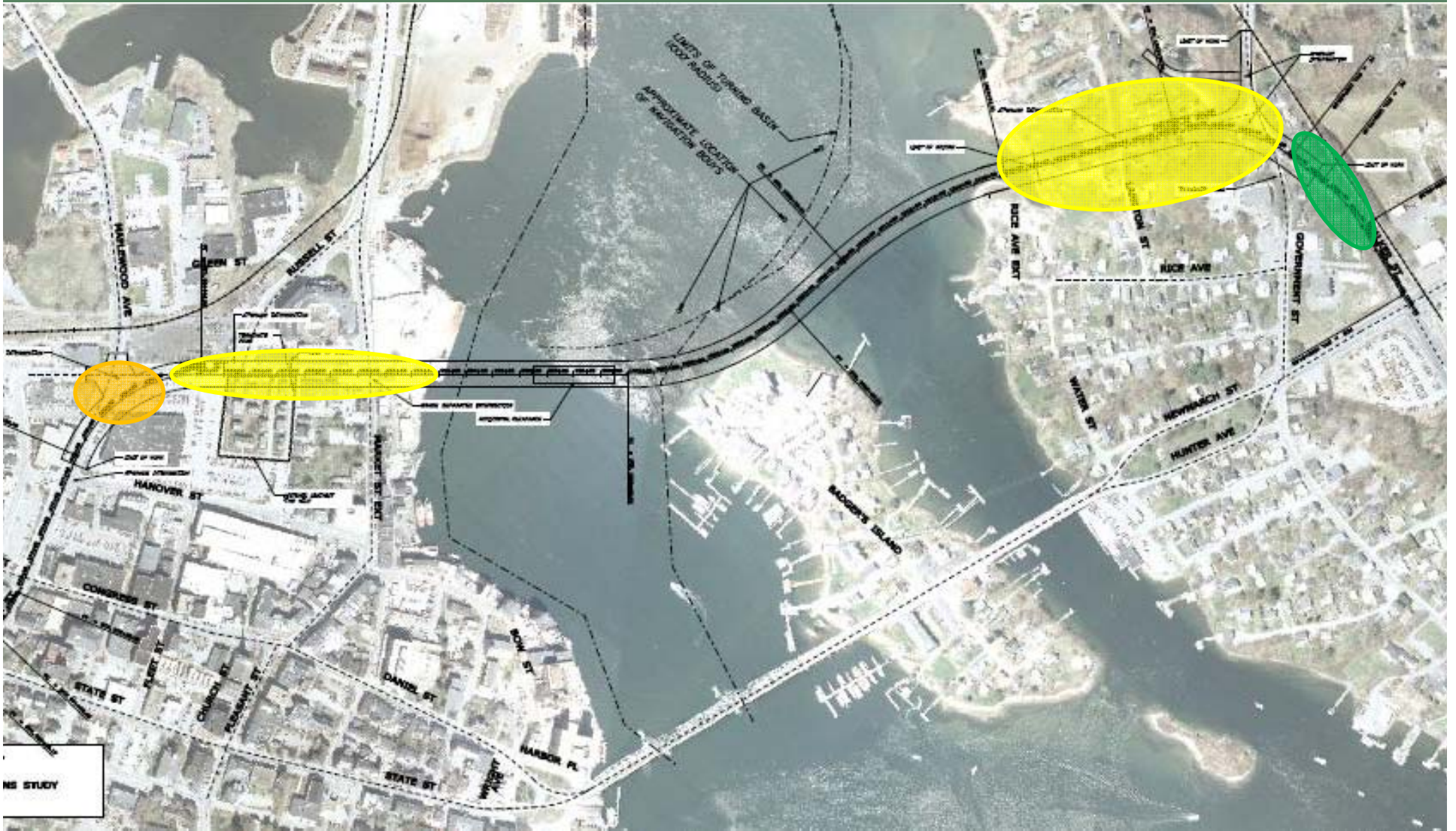
Alternative 1A - Low Level



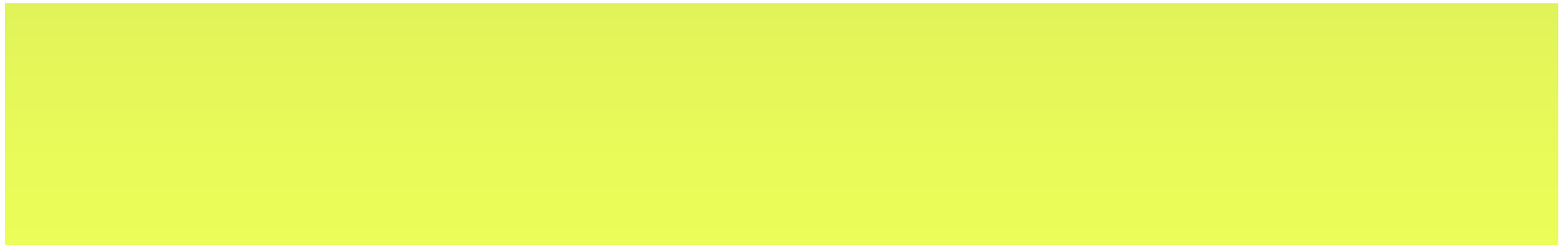
Alternative 1B - Mid Level



Alternative 1B - Mid Level



Alternative 2



Alternative 3

Round 1 Results

- Indicate how many left on table and how many off

Round 2 Criteria

- Discuss: cost/traffic mobility, other

Next Steps

- Stakeholder Meeting this afternoon
- Get to Round 2: Goal for number and timing- ?
- Public Meeting: December or January