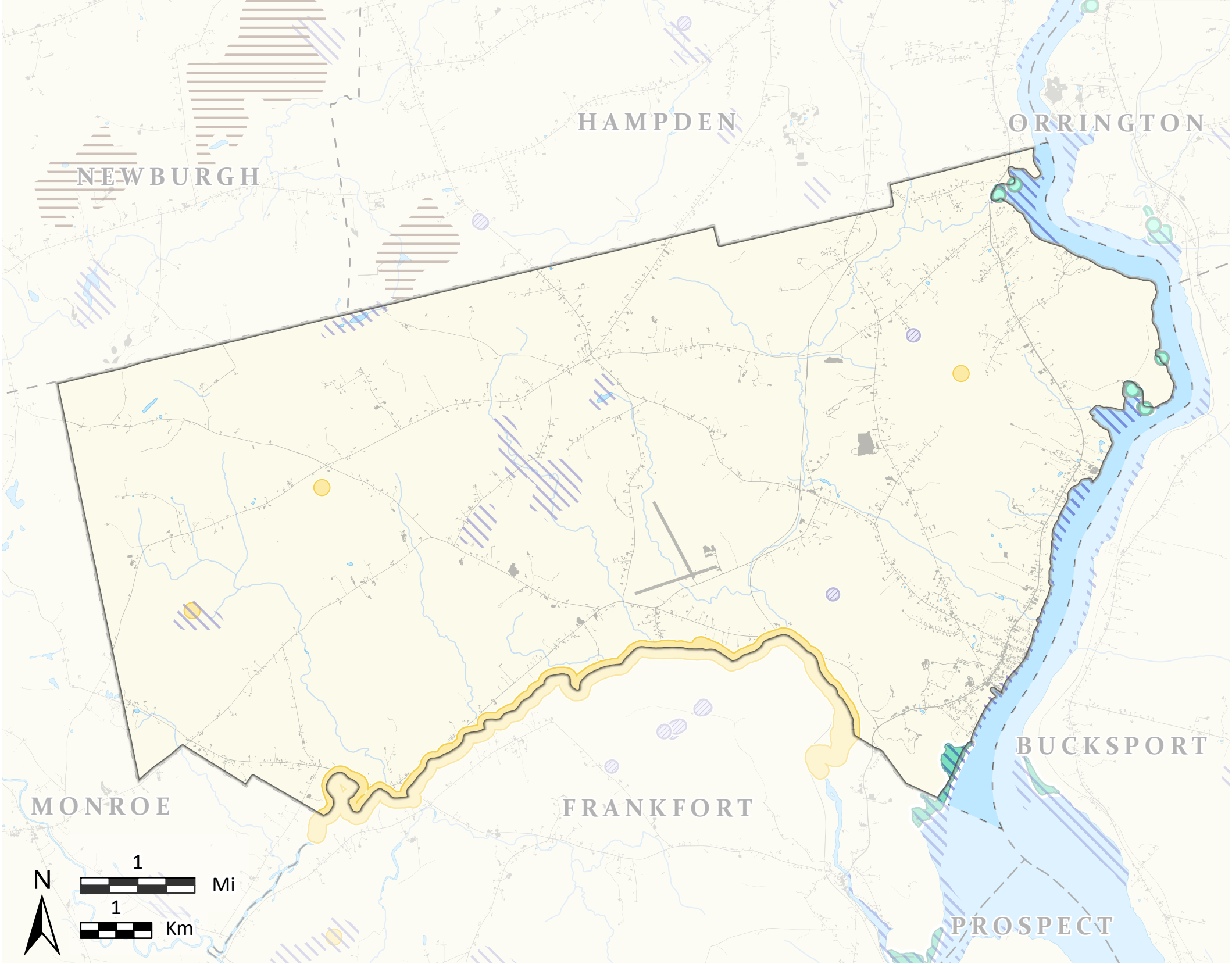


# Winterport

## High Value Plant and Animal Habitats



This map is nonregulatory and is intended for planning purposes only



- Organized Towns**
- Developed** Impervious surfaces such as roads and buildings.
- Rare or Endangered Wildlife\***
- Endangered, Threatened, or Special Concern Species Mapped observations of rare wildlife species.
- Rare or Exemplary Plants and Natural Communities**
- Rare Plant Locations Known rare, threatened, or endangered plant occurrences are based on field observations.
- Rare and Exemplary Natural Communities Mapped features are based on field surveys and aerial photo interpretation.
- Significant Wildlife Habitat**
- Significant Vernal Pools Surveyed pool depressions used for breeding by amphibians and other indicator species and that portion of the critical terrestrial habitat within 250 ft of the spring or fall high water mark.
- Deer Wintering Area Forested area possibly used by deer for shelter during periods of deep snow and cold temperatures.
- Inland Waterfowl and Wading Bird Habitats Breeding, migrating/staging, or wintering areas for inland waterfowl or breeding, feeding, loafing, migrating, or roosting areas for wading birds.
- Tidal Waterfowl and Wading Bird Habitats Breeding, migrating/staging, or wintering areas for coastal waterfowl or breeding, feeding, loafing, migrating, or roosting areas for coastal wading birds.

**Beginning with Habitat (BwH)** equips Maine communities, landowners, and conservation partners with tools to protect, restore, and connect important habitats and ecosystems in a changing climate. [www.beginningwithhabitat.org](http://www.beginningwithhabitat.org)

TOWN BOUNDARIES - ME Office of GIS (2021)  
HYDROLOGY - U.S. Geological Survey National Hydrography Dataset(2016)  
DEVELOPED - NOAA Coastal Change Analysis Program (C-CAP) (2022)

RARE, ESSENTIAL & SIGNIFICANT WILDLIFE HABITATS - ME Office of GIS, ME Dep. of Inland Fisheries & Wildlife (2024)  
RARE NATURAL COMMUNITIES & PLANTS - ME Natural Areas Pgm (2024)