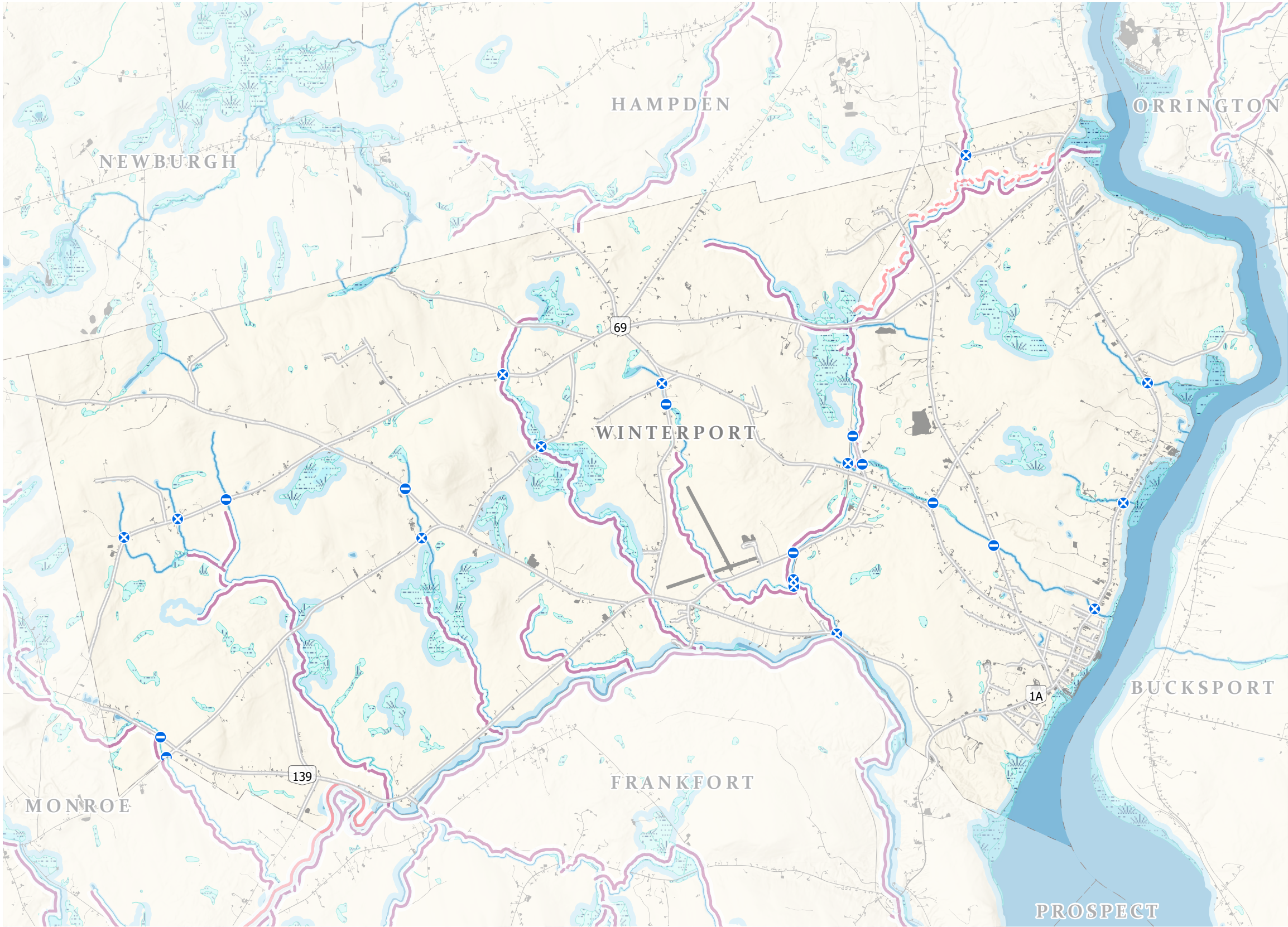


Winterport

Water Resources and Shoreland Habitats



This map is nonregulatory and is intended for planning purposes only



Organized
Towns

Maine Stream Habitat Viewer Road Stream Crossings

Barrier

Potential
Barrier

*Crossings on
private roads
not shown.

[Find crossing details on the
Stream Viewer -](#)

beginningwithhabitat.org/maps

Atlantic
Salmon
Habitat

Reflects surveys on selected Maine streams.

Wild Brook
Trout Priority
Conservation
Areas

Reflects surveys on selected Maine streams.

Wetlands

National Wetlands Inventory (NWI) uses
aerial photographs to approximate wetland
locations. NWI data typically under represents
the presence of wetlands on the landscape.

Shoreland
Areas

Areas are delineated by ME Dep. of
Environmental Protection's Mandatory
Shoreland Zoning Act, which includes areas
within 250 feet of great ponds, rivers, and
wetlands, and within 75 feet of streams. The
regulations within each shoreland zone
depends on the town, and towns may regulate
greater areas than what is shown here. For
more information, please visit: [https://
www.maine.gov/dep/land/slz/](https://www.maine.gov/dep/land/slz/)

Developed

Impervious surfaces including buildings and
roads.

TOWNSHIP BOUNDARIES - Maine Office of GIS
(2020)
ROADS - ME Office of GIS, ME Dept of
Transportation (2021)
HYDROLOGY - USGS National Hydrography
Dataset (2016)
DEVELOPED - CCAP NOAA impervious land
cover (2022)
NATIONAL WETLANDS INVENTORY - U.S. Fish
& Wildlife Service (2020)
SHORELAND AREAS - ME Office of GIS, ME
Natural Areas Pgm(2011)

BROOK TROUT PRIORITY CONSERVATION
AREAS - ME Dept of Inland Fisheries &
Wildlife (2020)
MAINE HERITAGE FISH WATERS - ME Dept of
Inland Fisheries & Wildlife (2022)
ATLANTIC SALMON HABITAT - ME Dept of
Marine Resources (2024)
SHELLFISH - ME Dept of Marine Resources
(2010)
ME ROAD STREAM HABITAT CROSSINGS - ME
Dept of Inland Fisheries & Wildlife, US Fish and
Wildlife Service (2022)

Beginning with Habitat (BwH) equips Maine communities, landowners, and conservation partners with tools to protect, restore, and connect important habitats and ecosystems in a changing climate. www.beginningwithhabitat.org

July 2025