

Primary Map 3
Undeveloped Habitat Blocks
Town of Lee

This map is non-regulatory and is intended for planning purposes only



LEGEND

The colored areas of this map represent undeveloped areas that are defined by a 500 foot buffer around all improved roads identified by the Maine Department of Transportation and all developed areas identified in the 1993 Statewide GAP Land Cover Analysis. Blocks ≥ 100 acres are labeled with their size in acres.

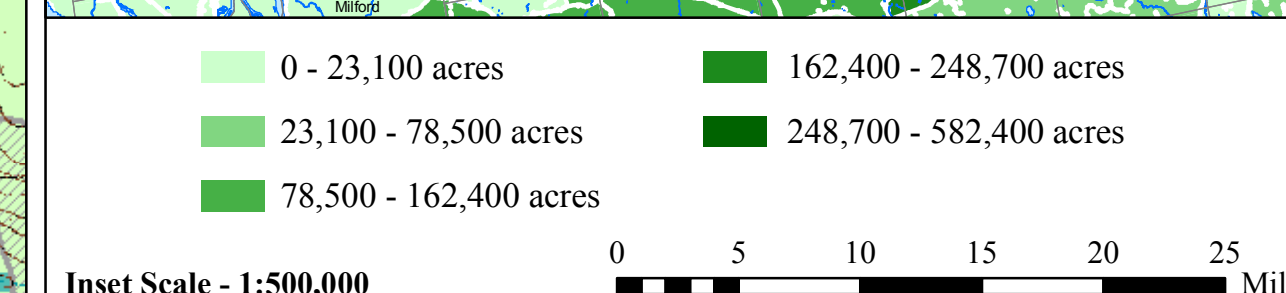
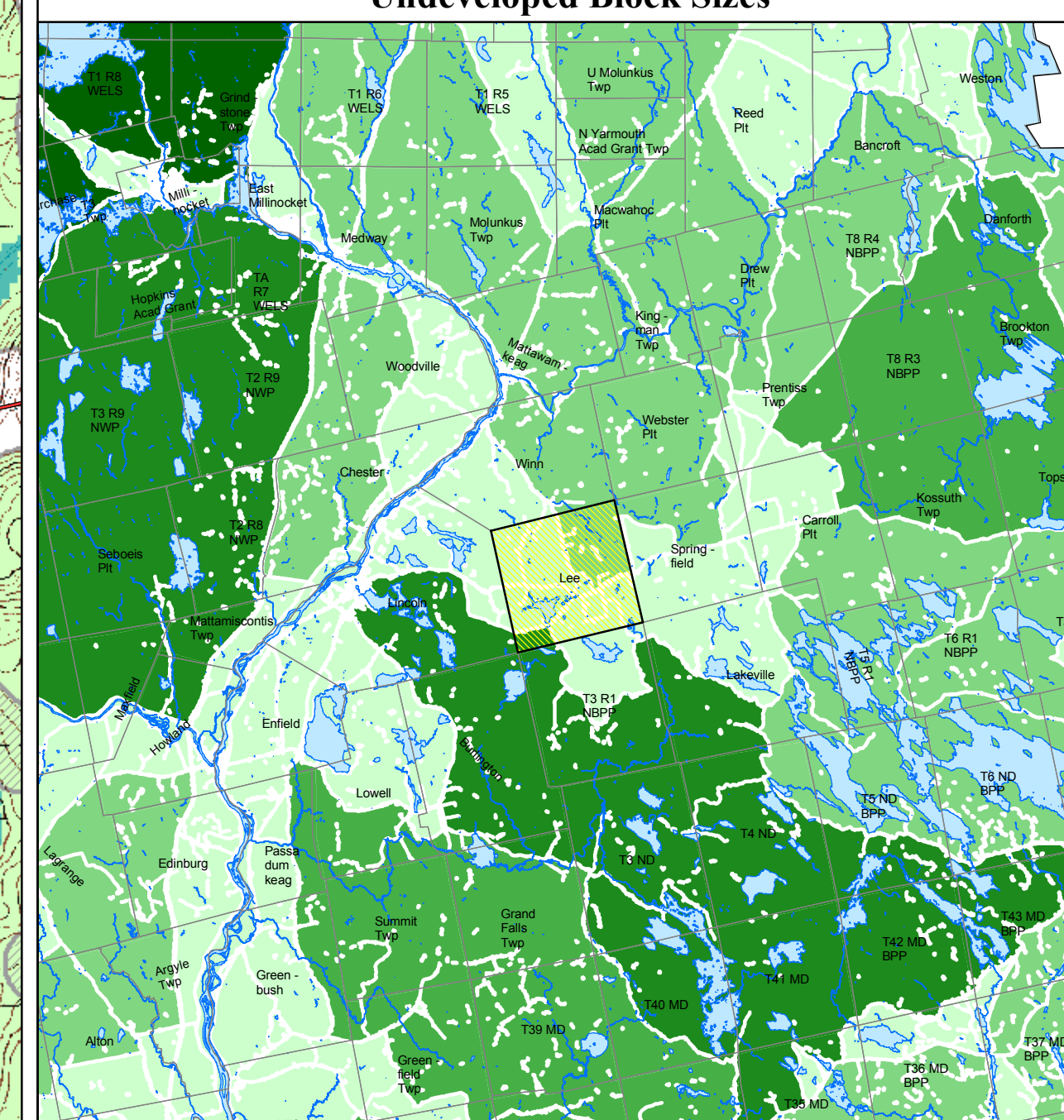
The areas marked in transparent grey hatching represent a 500' buffer on newly available road data collected for the E911 program. Because E911 data does not identify which roads are improved, it is not clear which of these roads fragment large habitat blocks. Therefore, this data was not used in the Undeveloped Habitat Blocks analysis. However, local knowledge of the condition of these roads should be used to more accurately identify Undeveloped Habitat Blocks.

Within the Undeveloped Habitat Blocks, the general landuse/landcover is shown. The general landuse/landcover categories are described in the legend below.

Landuse/Landcover (General Categories)

- AGRICULTURAL LANDS**
Landcover types where human intervention maintains an open landscape dominated by grasses, row crops, or blueberry bushes.
- WETLANDS**
Transitional landcover types between open water and uplands. The U.S. Fish & Wildlife Service defines wetlands in terms of a landscape unit that must have at least one of the 3 following characteristics:
 (1) supports predominantly hydrophytes (wetland plants);
 (2) substrate is predominantly undrained, hydric (wet) soils;
 (3) if the substrate is non-soil, it is saturated or covered with water during at least part of the growing season.
- FOREST LANDS**
Lands dominated by forests with tree crown closure of $\geq 10\%$ and capable of producing trees suitable for harvesting. Includes areas that have been harvested recently (clearcuts, light-partial, or heavy-partial cuts), are in various states of regeneration (early or late), and mature forests.
- OTHER**
Exposed rock/talus, alpine tundra
- UNORGANIZED TOWNSHIPS**
Data on improved roads is less available for unorganized towns.
- E911 ROADS (with 500-ft. buffer)**

REGIONAL Undeveloped Block Sizes



Data Sources

- LANDCOVER:**
1993 Maine GAP Analysis Program www.wlc.maine.edu/temp_unit/gap
- ROADS:**
2002 Maine Department of Transportation (1:24,000)
- TOWN BOUNDARIES, HYDROLOGY:**
Maine Office of GIS (1:24,000)
- UNDEVELOPED BLOCKS:**
Maine Dept. of Inland Fisheries & Wildlife
Maine Natural Areas Program
- BASE DATA:**
U.S. Geological Survey Quadrangle Maps (1:24,000)

Mattawamkeag 1986	Mattawamkeag 1986	Kingman 1986	Potter Hill 1986
Lincoln Center 1986	East Winn 1986	Springfield 1986	Bowers Mtn 1986
Lincoln East 1986	Lee 1986	Weir Pond 1986	Bottle Lake 1986
Burlington 1981	Saponac 1981	Spring Lake 1982	Duck Lake 1982