

## Maine Library of Geographic Information Board Meeting

Date: Wednesday, May 19<sup>th</sup> , 2010

Time: 10:00 AM to 12:30 PM

Place: Burton M. Cross Building, Conference Room 105.

### AGENDA

1. Approval of the April 21<sup>st</sup> meeting minutes – Chair
2. GeoPortal Demonstration – Christopher Kroot
3. Strategic Plan Implementation – Chair & Co-Chair  
*What other items need to be implemented/kept in mind besides workgroups*  
*How are Mike & Dan faring as the coordinators*  
*Thoughts on going forward*
4. Strategic Plan Implementation Groups
  - Coordination & Communication – Mike Smith, Dan Walters
  - GeoParcels – Mike Smith
  - Education & Training – Tora Johnson (or designated Board member)
  - Geospatial Data – Joseph Young (or designated Board member)  
*Orthoimagery Report Update*
5. Committee Reports
  - Financial  
*Results of teleconference on funding- Chair*
  - Policy & Marketing – Marilyn Lutz  
*Web Content Coordination Policy*
  - Technical – Christopher Kroot  
*Status of GeoPortal (covered in #2)*

**NEXT SCHEDULED MEETING:** Wednesday, June 16<sup>th</sup> , 2010, 10:00 a.m. – 12:30 p.m., Burton M. Cross Building, Conference Room 105.

**Maine GeoLibrary Board**  
**May 19<sup>th</sup> , 2010**  
**Meeting Minutes**

### Present

Dan Walters

Michael Smith  
Nancy Armentrout  
Marilyn Lutz  
Greg Copeland  
Gretchen Heldmann, Chair  
Kenneth Murchison (by phone)  
Paul Hoffman  
William Hanson, Co-Chair  
Daniel Coker  
Greg Davis (by phone)  
Judy-Colby George  
Jon Giles  
Christopher Kroot

**Staff**

Larry Harwood

**Visitors**

David McKittrick Delorme  
Brian Stearns, Sales Engineer, Delorme  
Steve Weed, Assessor Town of Bar Harbor  
Vinton Valentine, University of Southern Maine (USM)

The meeting was called to order at 10:03 AM, Co-Chair Bill Hanson presiding until the later arrival of Chair Gretchen Heldmann.

**1. Approval of the April 21<sup>st</sup> meeting minutes**

The Chair entertained a motion to approve the minutes. There were 2 amendments. On page 1 under attendance, Greg Davis called in, not Greg Copeland. On page 9, the last sentence should read “The funding is used up for now”. Marilyn Lutz moved to approve the minutes as amended. Mike Smith seconded. The Board voted 8<sup>1</sup> in favor, none opposed, no abstentions. The motion carried. (Unless otherwise indicated, the Chair abstains from all votes.)

**2. GeoPortal Demonstration.**

Christopher Kroot gave a lengthy but unscripted demonstration of the current status of the GeoPortal. The map display upgrade called MapFish<sup>2</sup> had not yet been installed as planned but most all of the other functions were demonstrated notwithstanding some remaining bugs that need to be fixed. The mapping component plus the final fixes are expected to be done by 24<sup>th</sup> of the month which is actually the specified completion date. After that the ad hoc GeoPortal review committee<sup>3</sup> will have 3 months to review the functionality. Final payment will be made after the successful completion of the review.

The demonstration lasted about an hour and a half with many questions, requests and valuable input from the Board. The following is a summation of the main items in outline form.

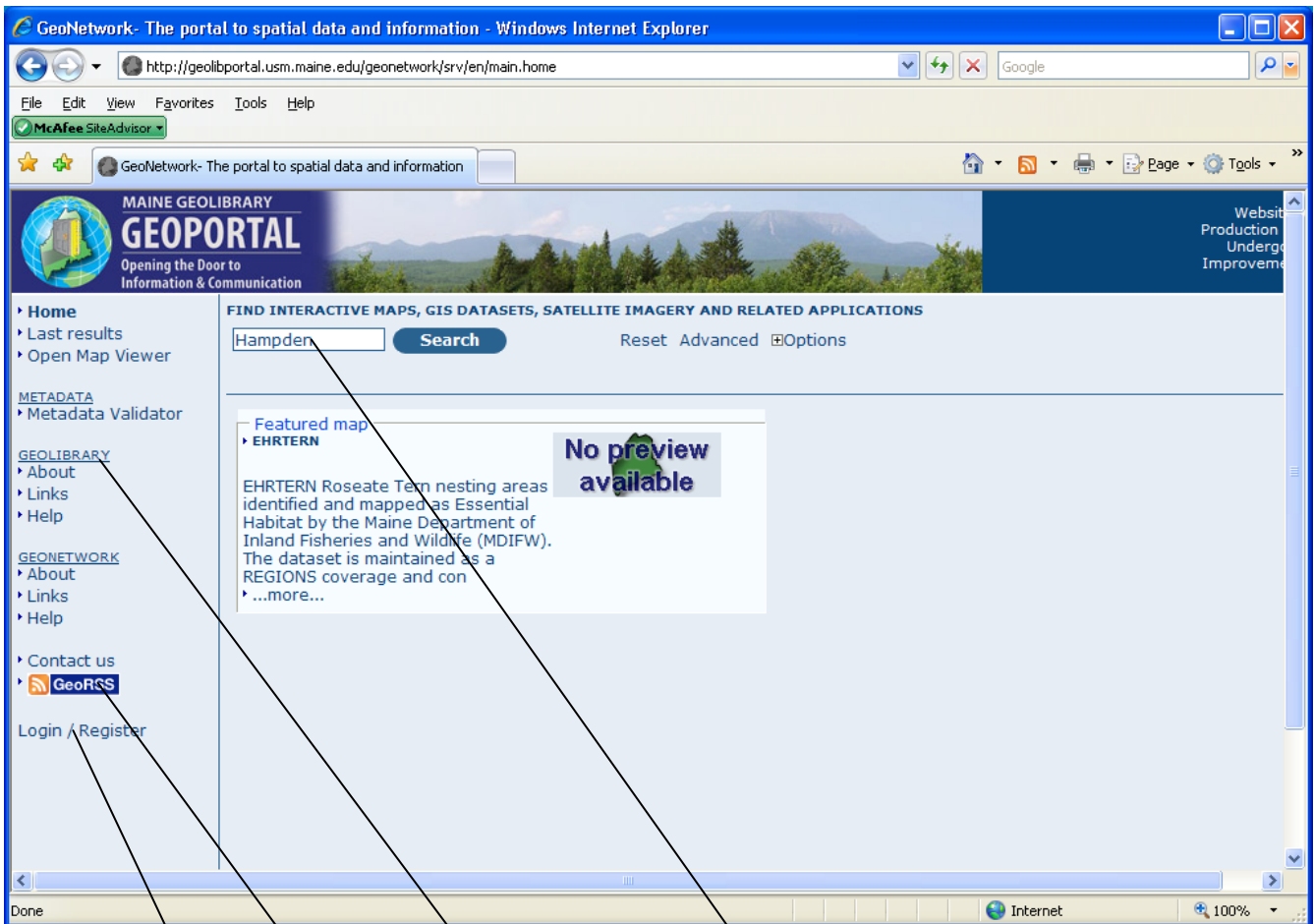
Front page

---

<sup>1</sup> Due to Board members arriving and departing at different times, the numbers may change.

<sup>2</sup> An open source map display software, see <http://mapfish.org/>

<sup>3</sup> Essentially certain members of the standing Technical Committee plus Board volunteers.



The basic search is here using a town name

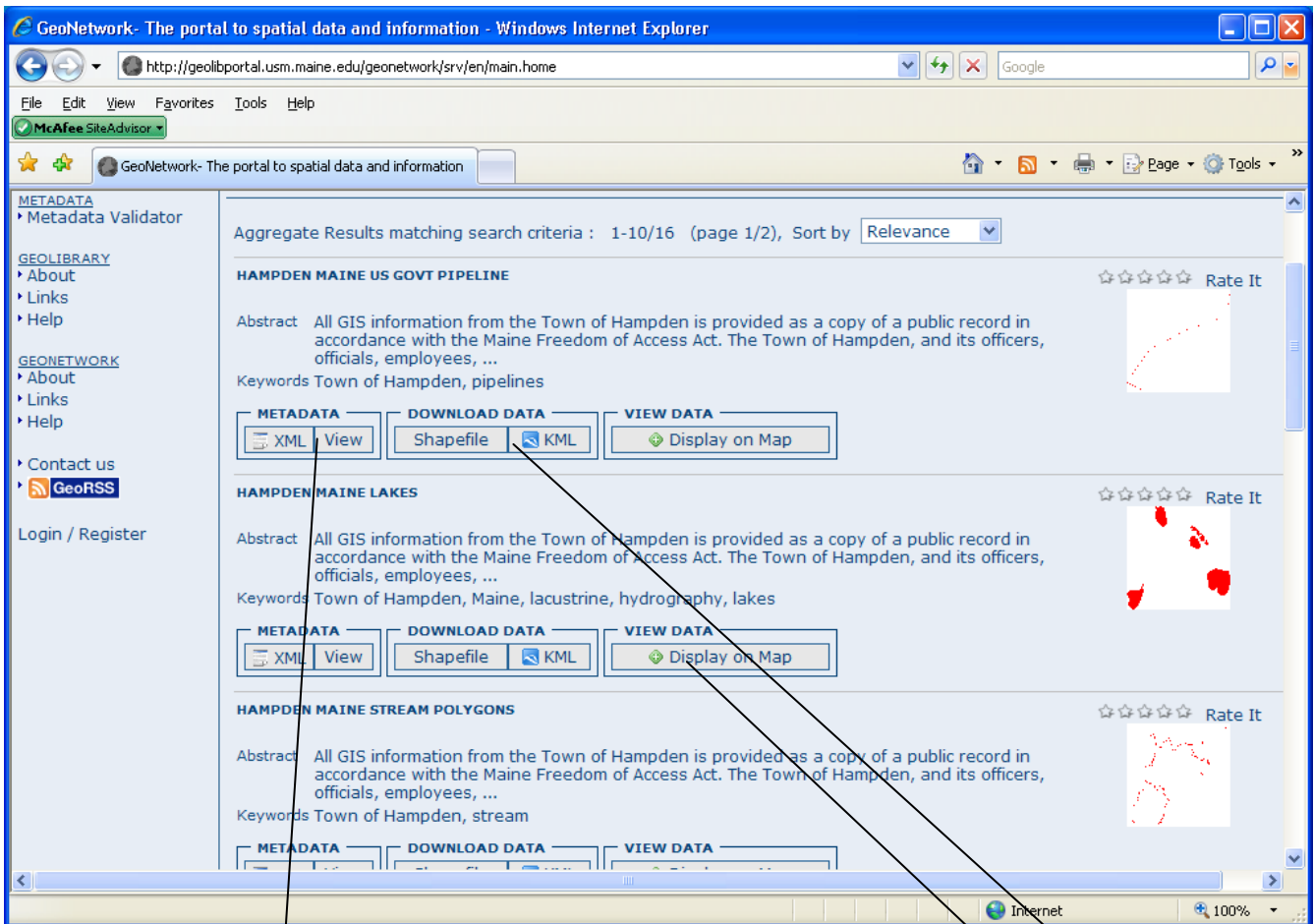
The “About” is supposed to bring up the Geolibrary website.  
The “Links” are to other web sites as usual.

This brings in web links to other data.

This is for registration and login to upload data and metadata.

There was some discussion about what links there should be and how to manage them. A Geolibrary policy that addresses the relationships between the various websites is still in the process of being finished. It was suggested that an “About the GeoPortal” section was needed.

Search results



For each data set the metadata can be displayed in different formats. A shape file or a KML<sup>4</sup> file can be downloaded. The data layers can be viewed on the mapping section by clicking here.

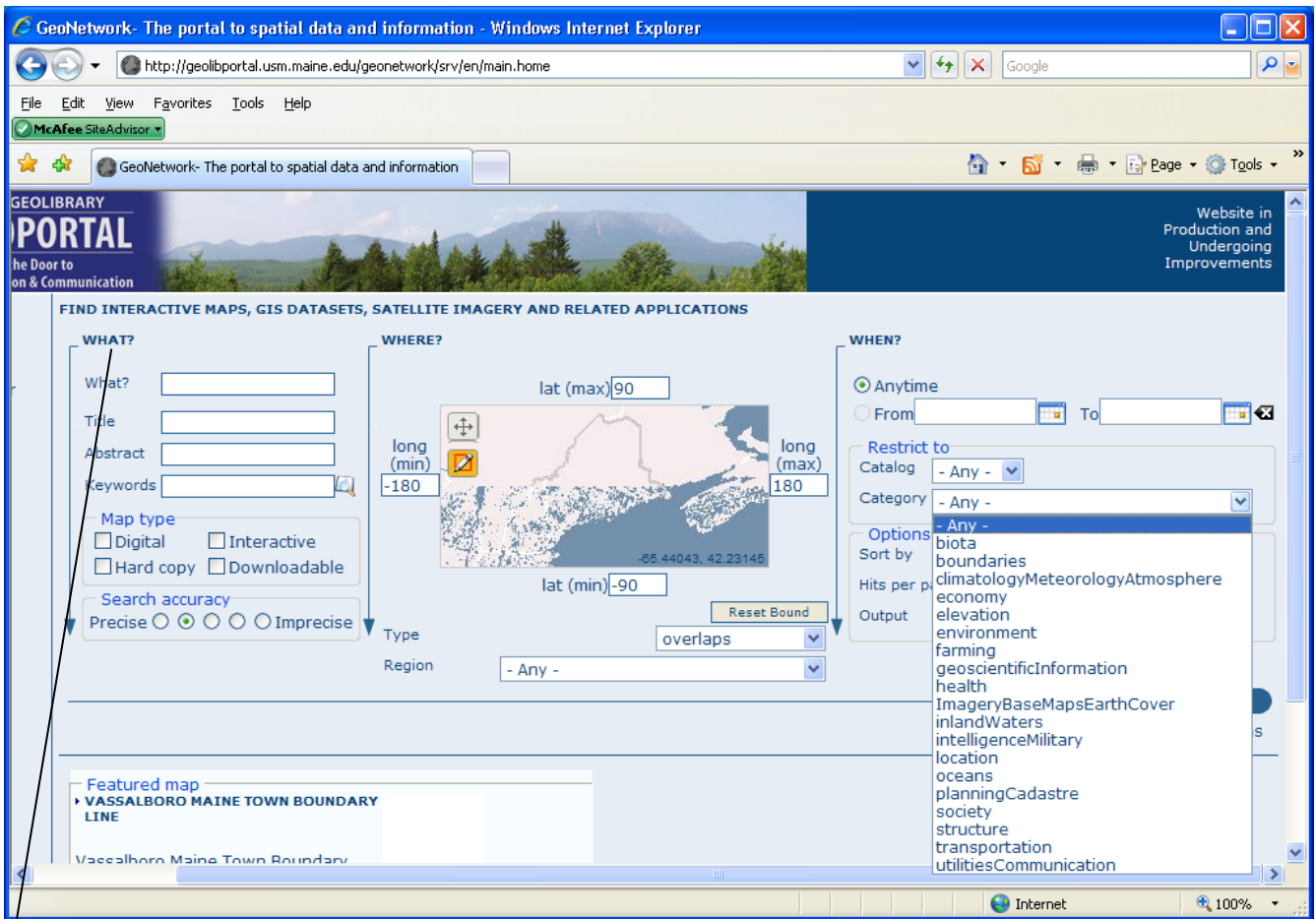
There was a comment that in uploading shape files to the portal, there were problems with state plane projections. The problem appeared to be in the units and datum or a combination thereof. The review committee will look into this problem.

The naming convention was briefly discussed. By beginning each municipal layer with the town name it avoids having multiple “roads” layers indistinguishable from each other.

A view of the advanced search page of the portal. These basic categories are the standard ISO (International Organization for Standardization) theme keywords. They are a well known standard in metadata documents.

Advanced search

<sup>4</sup> Key Markup Language, a file that can display GIS data on Google Earth.



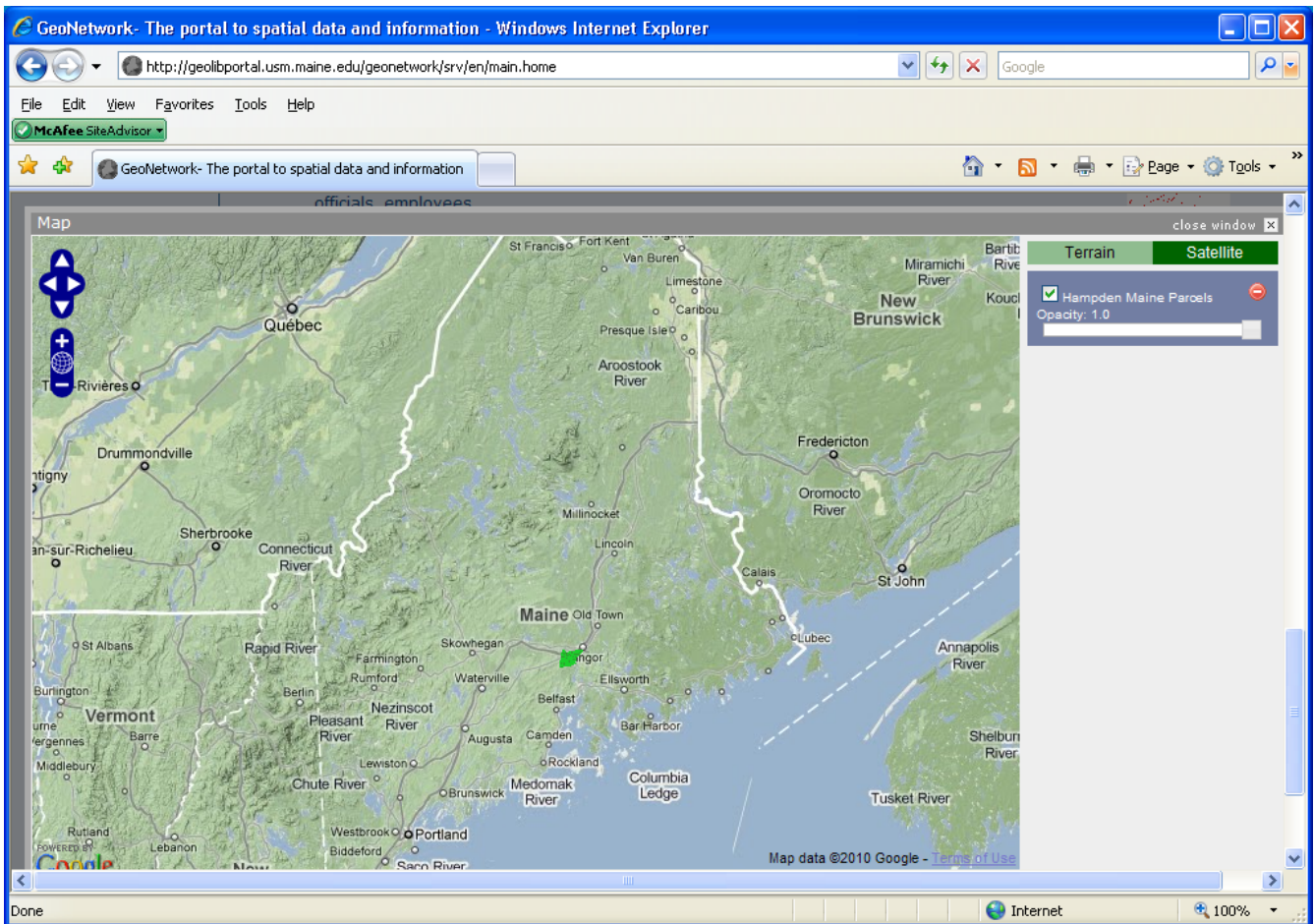
This is where the user enters specific text to narrow the selection. Board members reported that this had not worked entirely as expected.

There was an extensive discussion on the issues of keywords in metadata and how their presence or absence in parts of the metadata documents submitted affects the results of the searches. The subject is complex but basically at present the portal is dependent upon the submitters or whoever writes the metadata to supply keywords. Ideally those creating metadata on the portal tool should be restricted to set keywords in certain sections of the metadata document. This is not possible now but could be a re-fit in the near future.

The selection by region and interactive (drawing a box) functions also have problems. They return statewide and other data sets outside of the selected area. This is on the list to fix as well.

There are a number of problems with the existing map display, all of which will be fixed with the installation of MapFish. One major problem shown here is that the display does not zoom in automatically on the data set being displayed.

Map display



A second major problem is no display of map legend and symbology. The navigation tools are difficult to use and there is no “return to previous extent” common in map applications. The new viewer will let the user move data layers up and down in the table of contents to change the order of drawing on screen. The user will also be able to set the transparency of a layer. MapFish will also have the ability to display Web Mapping Services and locally stored vector data.

There was a short discussion of the metadata/data uploading process. Currently there is no automatic alert to the portal administrator when new metadata is uploaded. The administrator manually sorts the entries to find the new ones; it is hoped this can be amended in the future. To date approximately 400 metadata records have been uploaded. One Board member noted that having USM intern Mike LaChance coach the towns on creating metadata has been extremely helpful.

Q: How much was the last authorized payment?

A: \$12,000 or about 2/3 of the remaining amount.

Q: How many people are working on the portal at USM?

A: One professor and 2 students, one senior and one sophomore. USM has had a major re-organization and we in state government know how disruptive that can be. The management and financial people needed to be brought up to speed on the portal project. Focusing on the MapFish installation has detracted from fixing other problems but it will all be fixed by the 24<sup>th</sup>.

Q: Can the contact data being collected be used to ask towns for updates to their parcel data?

A: Probably there is no legal issue, they submitted the data voluntarily.

### 3. Strategic Plan Implementation – Chair & Co-Chair

*What other items need to be implemented/kept in mind besides workgroups*

(Gretchen Heldmann, having arrived earlier on, had taken over as Chair) Led by the Chair the Board went through the list of past and future promotional activities, viz. presentations at meetings and articles in publications.

- Presentation on LiDAR by Joe Young to the American Society of Civil Engineers, March 18<sup>th</sup>
- Presentation on ILRIS<sup>5</sup> by Bill Hanson at the Maine Bar sponsored *2010 Real Estate Institute*, May 21<sup>st</sup>
- Overview of Geolibary projects to the Maine Emergency Management Agency by Gretchen Heldmann, Dan Walters, Nancy Armentrout on April 30 at a *Maine Prepares* meeting
- Article by Judy Colby-George for the Maine Planners Assoc. publication next year
- Technical article by Christopher Kroot for the Technical Association of Maine publication
- Articles with as yet undetermined authorship for:
  - Maine Association of Wetland Scientists (MAWS)
  - Maine Association of Professional Soil Scientists (MAPSS)
  - Maine Association of Site Evaluators (MASE)

*How are Mike & Dan faring as the coordinators*

Neither Mike Smith or Dan Walters have been able to spend the time they would like coordinating the implementation. Notwithstanding they both felt they could apply more time in the near future.

*Thoughts on going forward*

The Chair posed some questions. Should there be another review of the entire plan? The consensus was yes. In particular are there any other groups or subgroups that need to be formed for its implementation? It was not thought that this was needed. Are the groups all using the on-line tracking sheet? It appeared that most were. It was also pointed out that of the seven highlights in the plan, six were being undertaken.

#### **4. Strategic Plan Implementation Groups**

##### Coordination and Communication

Mike Smith has been primarily occupied with coordinating the Northeast LiDAR<sup>6</sup> Project. Approximately \$92K has been added to the funding which will allow the coastal towns to have LiDAR collected throughout their area as opposed to only on the coast. About 192\$K in funding has been added by the Natural Resources Conservation Service to complete a large area of the Penobscot River watershed in the greater Bangor area. A number of other small amounts of money are coming on from individual towns. The Board is providing a very valuable service by helping to coordinate all this.

##### GeoParcels

Mike Smith reported that the pilot project was on schedule. It will be recalled that there are three phases, collating the cadastral data, developing an updating process and creating a web application to provide public access to the cadastral data. The first phase is done and the second and third phases are under construction. The completion time is scheduled for August.

##### Education and Training

Vinton Valentine reported that all the materials for the presentations by Tora Johnson and Charles Colgan at the last Board meeting were available on line at [http://megischamps.org/workforce\\_summit.html](http://megischamps.org/workforce_summit.html)  
There was nothing further to report.

##### Geospatial Data

###### *Orthoimagery Report Update*

Dan Walters reported that since the report was introduced at the last meeting, there had been a number of suggested changes and minor corrections. Of these suggestions, two were substantive. First there were

---

<sup>5</sup> Integrated Land Records Information System, the pilot project to link deeds & surveys with tax map information

<sup>6</sup> Light Detection and Ranging, a remote sensing system used to collect topographic data.

suggestions for changing the refresh rate ( ‘section’) of some townships. This could be done now or, once the program started, it could be reviewed each year and adjusted if needed. Discussion favored the latter course.

Second there had been requests from some forestry interests for leaf-on collection in the unorganized townships instead of leaf-off. The request was for ‘leaf-out’ when the leaves are just emerging and fall foliage. On the other hand the state foresters requested leaf-off collection for regulation and infrastructure. It was suggested that the leaf-off recommendation stay in the report and that the NAIP<sup>7</sup> imagery be used for leaf-on purposes. After some discussion this was agreed to. The report will be circulated again with the intention of voting on it at the next Board meeting.

Q: How will the project handle towns that want to join in or ‘buy-up’ ahead of their regular schedule?

A: The short answer is we will try to discourage them from doing so especially if they are scattered. On the other hand we would not forbid them at least in the short term. Town budgeting is always difficult and we will try to accommodate them, however there may not be any economy of scale if they jump ahead.

Q: Has satellite collection been looked at?

A: Not really. When last anyone looked, satellite imagery was very expensive for the resolutions proposed. There are also technical problems with cloud cover, haze, timing for leaf-off collection and so forth. If someone wants to put forward a proposal it would certainly be considered.

## **5. Subcommittee Reports**

### Financial

#### *Results of teleconference on funding – Chair*

The Chair briefly outlined the results of the funding conference call on May 19<sup>th</sup>. In summation it was agreed that the Geolibary Board should organize a campaign to induce the legislature to fund the Geolibary at a set level. That level is to be determined in the very near future. It may be base operational costs, funding for the orthoimagery, funding for orthoimagery plus other high priority data or a combination. This will be a major effort estimated to require 600 – 1,000 hours of volunteer time. This can only be accomplished by a division of labor and careful planning. The complete notes of the conference call will be forwarded to the full Board after today’s meeting.

### Policy and Marketing

#### *Web content coordination policy*

This policy had not been completed yet. It was tabled to the next meeting.

### Technical

#### *Status of the GeoPortal*

This had already been covered in detail as explained above.

### **Other Business**

Today was Greg Copeland’s last Board meeting; he will be resigning upon the expiry of his term. He expressed his great satisfaction at having worked with the Board members but felt that circumstances precluded his further participation.

The Chair thanked Mr. Copeland for his service on the Geolibary Board. The Chair also directed that the minutes record the Board’s great satisfaction with Mr. Copeland’s service, its regret at his departure and its best wishes to him in his future endeavors.

The meeting was adjourned at 12:35.

---

<sup>7</sup> National Agriculture Imagery Program, 1 meter resolution imagery flown every three years and made freely available by the U.S Dept. of Agriculture