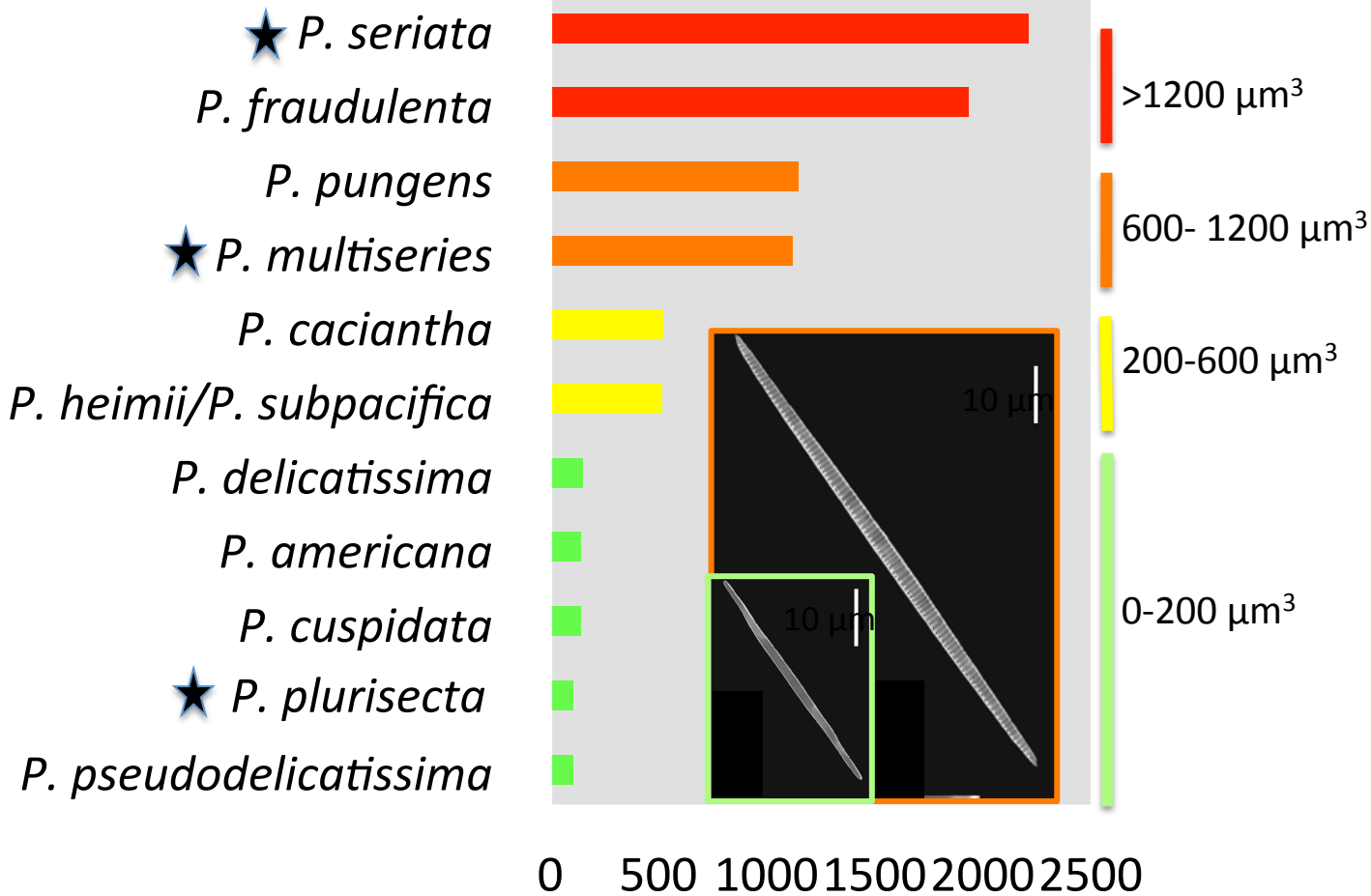


Cell size varies across GOM *P-n* species

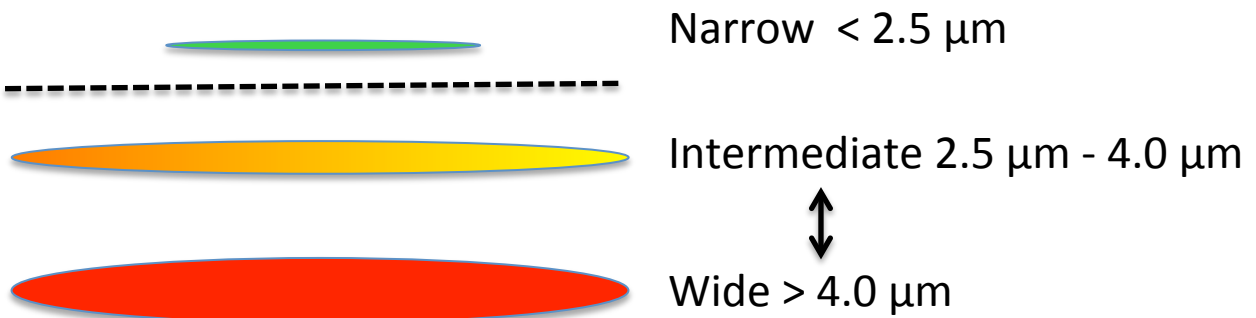


★ Three most toxic GOM species

Cell volume

Modified from Fernandes et al. 2014

Cells/species can be distinguished based on width



Bigger species (like *P. seriata* and *P. multiseriata*) often produce more DA per cell in culture than small species (*P. plurisecta*); cell thresholds associated with potential health threats are different for large vs. small species.