

**MAINE DEPARTMENT OF HEALTH AND HUMAN SERVICES**

**Office of Child and Family Services**

**Child Protective  
Services Annual Report**

**2014**



*Child and Family Services*  
An Office of the  
Department of Health and Human Services

Paul R. LePage, Governor

Mary C. Mayhew, Commissioner

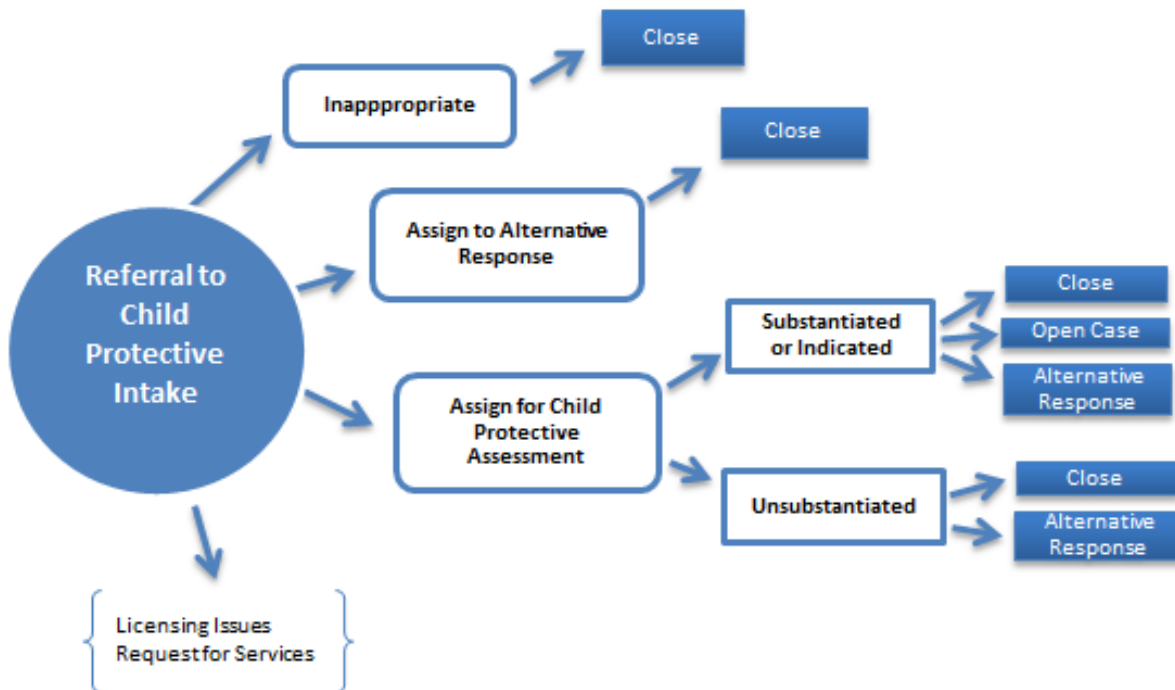
# Child Protective Services Annual Report

The following report provides a summary of the number of referrals to Child Protective Services, the number of unassigned referrals, and a series of detailed reports on the characteristics of the referrals that were assigned to caseworkers for assessment.

A referral is any written or verbal request for Child Protective Services intervention, in a family situation on behalf of a child, in order to assess or resolve problems being presented.

All county level data represents the county where the primary caregiver was residing at the time of the Intake referral.

...  
Title 22 MRSA, Chapter 1071, Subsection 4002 defines abuse or neglect as "a threat to a child's health or welfare by physical, mental, or emotional injury or impairment, sexual abuse or exploitation, deprivation of essential needs or lack of protection from these by a person responsible for the child."



## ***REFERRALS FOR CHILD PROTECTIVE SERVICES***

During calendar year 2014, the Department of Health and Human Services received 19239 referrals for Child Protective Services intervention in a family situation. Most referrals are received through Child Protective Intake, though a small amount of reports are received within one of the eight District Offices. When reports are received, a decision is made regarding whether or not the report contains allegations of abuse or neglect per Title 22. If the report does not contain allegations of abuse or neglect per Maine state law, the report is not assigned (“inappropriate”) for intervention. When reports contain allegations of abuse or neglect and are “appropriate” for intervention, the report may be assigned for a child protective assessment, or assigned to an Alternative Response Program (ARP).

The following chart shows the number of reports received by county over the past three years. This includes inappropriate reports, reports assigned for alternative response, and those assigned for a child protective assessment.

<b>NUMBER OF REFERRALS BY COUNTY AND CALENDAR YEAR</b>			
<b>COUNTY</b>	<b>2012</b>	<b>2013</b>	<b>2014</b>
Androscoggin	2027	2145	2158
Aroostook	1189	1175	1220
Cumberland	2558	2606	2650
Franklin	472	469	471
Hancock	658	648	658
Kennebec	2236	2297	2252
Knox	554	549	573
Lincoln	416	439	441
Oxford	890	872	946
Penobscot	2640	2625	2529
Piscataquis	267	295	275
Sagadahoc	414	403	392
Somerset	970	1011	959
Waldo	626	647	627
Washington	442	454	480
York	2412	2527	2584
Unknown	40	21	11
Out of State	56	53	13
<b>TOTAL REPORTS</b>	<b>18867</b>	<b>19236</b>	<b>19239</b>

*\*Excludes reports referred to Licensing, Out of Home Investigation Unit, Service Requests, and reports received where a case was already open and the information was not a new incident.*

*\*County represents the county where the primary caregiver was residing at the time of the Intake referral.*

## ***INAPPROPRIATE REFERRALS***

During calendar year 2014, **7997** reports were deemed “inappropriate” (screened out) as they did not contain allegations of child abuse or neglect. Some examples of reports that would be deemed inappropriate include:

- **Parent/child conflict:** Children and parents in conflict over family, school, friends, or behaviors, with no allegations of abuse or neglect. Includes adolescents who are runaways or who are exhibiting acting out behaviors that parents have been unable to control.
- **Non-specific allegations** or allegations of marginal physical or emotional care, which may be poor parenting practice, but is not considered abuse or neglect under Maine Law.
- **Conflicts over custody** and or visitation of children which may include allegations of marginal/poor care.
- **Families in crisis** due to financial, physical, mental health, or interpersonal problems, but there are no allegations of abuse or neglect.

The following is the breakdown of inappropriate reports received by county over the past three years.

<b>NUMBER OF INAPPROPRIATE REPORTS BY COUNTY</b>			
<b>County</b>	<b>2012</b>	<b>2013</b>	<b>2014</b>
Androscoggin	964	964	908
Aroostook	566	574	499
Cumberland	1323	1221	1184
Franklin	238	232	194
Hancock	297	276	252
Kennebec	1068	1001	889
Knox	262	247	241
Lincoln	221	221	181
Oxford	467	437	371
Penobscot	1267	1210	1060
Piscataquis	148	143	118
Sagadahoc	231	181	166
Somerset	461	441	375
Waldo	317	310	291
Washington	215	172	152
York	1175	1185	1092
Unknown	40	21	11
Out of State	55	53	13
<b>State</b>	<b>9315</b>	<b>8889</b>	<b>7997</b>

## ***ALTERNATIVE RESPONSE***

---

The Department of Health and Human Services has contracts with private agencies to provide an alternative response to reports of child abuse and neglect when the allegations are considered to be of low to moderate severity.

In 2014, there were **1908** reports which were assigned to a Contract Agency for alternative response at the time of initial report. Referrals are also made to Alternative Response Programs at the conclusion of a child protective assessment or case with a family, when ongoing services and support are deemed necessary. The following chart shows the number of reports assigned for alternative response at the time of the Intake report.

<b>REPORTS ASSIGNED FOR ALTERNATIVE RESPONSE BY COUNTY</b>			
<b>COUNTY</b>	<b>2012</b>	<b>2013</b>	<b>2014</b>
Androscoggin	30	86	262
Aroostook	21	1	176
Cumberland	109	85	160
Franklin	5	22	60
Hancock	46	67	76
Kennebec	117	216	228
Knox	20	24	56
Lincoln	25	46	59
Oxford	20	31	132
Penobscot	199	284	221
Piscataquis	23	36	33
Sagadahoc	14	33	57
Somerset	29	25	43
Waldo	41	64	100
Washington	43	31	60
York	123	108	185
<b>State</b>	<b>865</b>	<b>1159</b>	<b>1908</b>

*\*County represents the county where the primary caregiver was residing at the time of the Intake referral.*

## ***REFERRALS FOR CHILD PROTECTIVE SERVICES***

There were **8945** reports involving **15215** children assigned to a caseworker for a child protective assessment during calendar year 2014.

The following is the breakdown by county of reports assigned for a child protective assessment over the past 3 years.

<b>REPORTS ASSIGNED FOR CHILD PROTECTIVE ASSESSMENT BY COUNTY</b>			
<b>COUNTY</b>	<b>2012</b>	<b>2013</b>	<b>2014</b>
Androscoggin	1001	1027	940
Aroostook	566	549	509
Cumberland	1099	1253	1251
Franklin	227	208	215
Hancock	298	286	313
Kennebec	1019	1058	1114
Knox	257	260	268
Lincoln	162	165	186
Oxford	398	392	424
Penobscot	1097	1048	1160
Piscataquis	85	108	118
Sagadahoc	165	177	165
Somerset	474	537	535
Waldo	258	257	219
Washington	160	216	241
York	1103	1216	1287
<b>State</b>	<b>8369</b>	<b>8757</b>	<b>8945</b>

*\*County represents the county where the primary caregiver was residing at the time of the Intake referral.*

**REFERRALS FOR CHILD PROTECTIVE SERVICES**

The following is the breakdown by county and age group of the alleged victims associated with the reports assigned for a child protective assessment over the past three years.

NUMBER OF ALLEGED VICTIMS ASSOCIATED WITH REPORTS ASSIGNED FOR CHILD PROTECTIVE ASSESSMENTS												
County	2012				2013				2014			
	Age Group				Age Group				Age Group			
	0-4	5-9	10-14	15-17	0-4	5-9	10-14	15-17	0-4	5-9	10-14	15-17
Androscoggin	728	554	339	111	767	557	322	97	679	552	329	90
Aroostook	446	299	208	42	413	293	171	60	369	287	161	70
Cumberland	716	555	338	135	782	645	472	161	802	679	461	184
Franklin	145	115	71	27	131	131	69	22	132	124	98	32
Hancock	194	145	111	32	196	124	98	31	219	147	109	29
Kennebec	725	468	356	131	758	513	340	119	758	570	346	134
Knox	186	137	73	20	208	125	91	20	201	141	86	22
Lincoln	100	96	43	16	101	93	68	17	117	104	71	25
Oxford	246	212	162	54	295	214	148	52	296	271	164	44
Penobscot	786	546	292	104	776	553	302	83	823	579	378	122
Piscataquis	53	41	32	16	71	53	45	14	79	58	41	14
Sagadahoc	106	96	52	24	102	101	72	23	106	95	55	24
Somerset	324	244	169	71	380	302	169	69	379	284	233	77
Waldo	216	131	78	32	195	156	99	25	176	143	73	16
Washington	136	79	49	19	161	126	59	28	174	138	75	25
York	707	554	464	137	784	627	473	186	781	699	484	181
<b>State</b>	<b>5814</b>	<b>4272</b>	<b>2837</b>	<b>971</b>	<b>6120</b>	<b>4613</b>	<b>2998</b>	<b>1007</b>	<b>6091</b>	<b>4871</b>	<b>3164</b>	<b>1089</b>

\*County represents the county where the primary caregiver was residing at the time of the Intake referral.

\*Children may be counted multiple times if more than one report was received in the year. There were 15215 unique children in calendar year 2014.

## ***REFERRAL SOURCE OF ALL REPORTS RECEIVED***

The following is a breakdown of the report source, (i.e. “Referent”) for reports received in calendar year 2014. Mandated reporters are required by law to provide their name and information about their professional relationship with the family, though can ask that their name be kept confidential from the family. Non-mandated reporters can ask that their name be kept “anonymous,” and not disclose their name/identity for the report.

<b>REFERRAL SOURCE – ALL REPORTS</b>			
<b>REFERRAL SOURCE</b>	<b>2012</b>	<b>2013</b>	<b>2014</b>
Anonymous	11%	11%	9%
Child Care Personnel	1%	1%	1%
Law Enforcement Personnel	11%	12%	13%
Medical Personnel	12%	13%	14%
Mental Health Personnel	12%	12%	12%
Neighbor/Friend	5%	4%	5%
Other	1%	1%	1%
Relative	7%	6%	6%
School Personnel	18%	19%	20%
Self/Family	13%	13%	11%
Social Services Personnel	8%	9%	9%

## ***REFERRAL SOURCE OF REPORTS ASSIGNED FOR CHILD PROTECTIVE ASSESSMENT***

<b>REFERRAL SOURCE – REPORTS ASSIGNED FOR CHILD PROTECTIVE ASSESSMENT</b>			
<b>REFERRAL SOURCE</b>	<b>2012</b>	<b>2013</b>	<b>2014</b>
Anonymous	11%	11%	9%
Child Care Personnel	1%	0%	0%
Law Enforcement Personnel	16%	17%	18%
Medical Personnel	15%	15%	15%
Mental Health Personnel	10%	10%	10%
Neighbor/Friend	5%	4%	5%
Other	1%	1%	1%
Relative	8%	6%	6%
School Personnel	17%	17%	18%
Self/Family	8%	8%	8%
Social Services Personnel	9%	10%	9%

*\*Excludes reports referred to Licensing, Out of Home Investigations, Service Requests, and reports received where a case was already open and the information was not a new incident.*



***HOUSEHOLD TYPE/LIVING ARRANGEMENT OF FAMILIES  
ASSIGNED FOR CHILD PROTECTIVE ASSESSMENT***

When receiving reports of suspected abuse/neglect, Maine OCFS documents information regarding the living arrangement of each family/household. For example, a two parent, unmarried family may include a biological parent and his/her live-in partner who is also a caretaker to the child (ren). A one parent female/male family would be a household with a single parent caring for the children. A “relative” household type would be chosen when grandparents, aunt/uncle, etc. are the caregivers of children. A non-relative household type would be selected when children are being cared for by a person not related to them.

The following chart shows the living arrangement at the time of the receipt of the Intake report for those reports that were assigned for a child protective assessment.

<b>LIVING ARRANGEMENT OF FAMILIES FOR REPORTS ASSIGNED FOR CHILD PROTECTIVE ASSESSMENT</b>			
<b>Household Type/Living Arrangement</b>	<b>2012</b>	<b>2013</b>	<b>2014</b>
Two Parent Married	21%	20%	19%
Two Parent Unmarried	30%	30%	32%
One Parent Female	38%	38%	36%
One Parent Male	6%	7%	7%
Adoptive Home	1%	1%	1%
Relative	3%	3%	3%
Non Relative	0%	0%	0%
Other	1%	1%	1%

## ***Family Risk Factors Identified During Assessment***

The following shows the percentage of assessments where one of the following risk factors were found during the assessment. Each assessment may have several risk factors.

<b>RISK FACTOR</b>	<b>2012</b>	<b>2013</b>	<b>2014</b>
Prior History with CPS	71%	72%	75%
Mental Health Problems	46%	44%	45%
Involved with Court	22%	21%	23%
Spouse Abuse/Family Violence	21%	21%	20%
Drug Misuse by Parent	20%	19%	19%
Pregnancy/New Child	19%	19%	18%
Heavy Child Care Responsibility	18%	14%	13%
Unstable Living Conditions	14%	14%	13%
School Related Problems	13%	12%	12%
Parent / Child Conflict	11%	12%	12%
ADD/ADHD	13%	12%	11%
Alcohol Misuse by Parent	12%	11%	10%
Physical Health Problems	11%	11%	10%
Severe Acting Out Behavior by Child	10%	10%	10%
Emotionally Disturbed Child	10%	9%	9%
Divorce Conflict	10%	8%	9%
Former Foster Child	9%	8%	9%
Learning Disability	8%	8%	8%
Inadequate Housing	5%	5%	5%
Social Isolation	3%	4%	3%
Physical Disability	3%	3%	2%
Drug Misuse by Child	2%	2%	2%
Premature Birth	1%	1%	1%
Runaway	1%	1%	1%
Alcohol Misuse by Child	1%	1%	1%
Abuse to Animals	1%	1%	<1%
Visual/Hearing Impairment	1%	1%	1%
Previous Child Death	1%	1%	<1%
Failure to Thrive Child	<1%	<1%	<1%
Fire Setting	<1%	<1%	<1%
Fetal Alcohol Syndrome	<1%	<1%	<1%

\*Totals will exceed 100% due to each assessment having multiple risk factors identified during the assessment.

## COMPLETED ASSESSMENTS

Below are outcomes for assessments completed in calendar year 2014, showing the number of completed assessments by county which resulted in a finding of abuse or neglect (substantiated or indicated), or no findings of abuse/neglect (unsubstantiated). Substantiated findings are high severity, whereas indicated findings are of low/moderate severity.

CHILD PROTECTIVE ASSESSMENT FINDINGS						
COUNTY	2013			2014		
	# Assigned	# Substantiated/ Indicated	#Unsubstantiated	# Assigned	# Substantiated/ Indicated	#Unsubstantiated
Androscoggin	1027	266	761	940	237	703
Aroostook	549	136	413	509	127	382
Cumberland	1253	334	919	1251	319	932
Franklin	208	50	158	215	52	163
Hancock	286	120	166	313	124	189
Kennebec	1058	237	821	1114	261	853
Knox	260	59	201	268	55	213
Lincoln	165	48	117	186	38	148
Oxford	392	99	293	424	100	324
Penobscot	1048	339	709	1160	291	869
Piscataquis	108	35	73	118	38	80
Sagadahoc	177	35	142	165	30	135
Somerset	537	173	364	535	174	361
Waldo	257	62	195	219	57	162
Washington	216	73	143	241	69	172
York	1216	417	799	1287	420	867
<b>State</b>	<b>8757</b>	<b>2483</b>	<b>6274</b>	<b>8945</b>	<b>2392</b>	<b>6553</b>

\*County represents the county where the primary caregiver was residing at the time of the Intake referral.

## ***ASSESSMENT FINDINGS RATE***

---

The following shows the percentage of assessments completed where findings of abuse or neglect were substantiated or indicated by county.

<b>ASSESSMENT FINDINGS RATE</b>		
<b>COUNTY</b>	<b>2013</b>	<b>2014</b>
Androscoggin	26%	25%
Aroostook	25%	25%
Cumberland	27%	25%
Franklin	24%	24%
Hancock	42%	40%
Kennebec	22%	23%
Knox	23%	21%
Lincoln	29%	20%
Oxford	25%	24%
Penobscot	32%	25%
Piscataquis	32%	32%
Sagadahoc	20%	18%
Somerset	32%	33%
Waldo	24%	26%
Washington	34%	29%
York	34%	33%
<b>State</b>	<b>28%</b>	<b>27%</b>

*\*County represents the county where the primary caregiver was residing at the time of the Intake referral.*

## ***CHILD ABUSE AND NEGLECT VICTIMS BY ABUSE TYPE***

---

The following report shows the victims by age group and type(s) of abuse found during the child protective assessment for the past three years. Children may be counted multiple times if they were the victim of more than one abuse type in a given assessment, or the victim of subsequent abuse in calendar year 2014.

<b>2012</b>				
<b>AGE</b>	<b>Sexual Abuse</b>	<b>Physical Abuse</b>	<b>Neglect</b>	<b>Emotional Abuse</b>
<b>0-4</b>	73	359	1469	332
<b>5-9</b>	95	221	883	544
<b>10-14</b>	83	171	581	503
<b>15-17</b>	20	56	180	134
<b>Total</b>	<b>271</b>	<b>807</b>	<b>3113</b>	<b>1513</b>

<b>2013</b>				
<b>AGE</b>	<b>Sexual Abuse</b>	<b>Physical Abuse</b>	<b>Neglect</b>	<b>Emotional Abuse</b>
<b>0-4</b>	57	424	1436	323
<b>5-9</b>	78	241	750	509
<b>10-14</b>	75	171	459	438
<b>15-17</b>	29	55	151	147
<b>Total</b>	<b>239</b>	<b>891</b>	<b>2796</b>	<b>1417</b>

<b>2014</b>				
<b>AGE</b>	<b>Sexual Abuse</b>	<b>Physical Abuse</b>	<b>Neglect</b>	<b>Emotional Abuse</b>
<b>0-4</b>	69	436	1237	235
<b>5-9</b>	86	305	729	506
<b>10-14</b>	82	159	427	387
<b>15-17</b>	28	49	126	128
<b>Total</b>	<b>265</b>	<b>949</b>	<b>2519</b>	<b>1256</b>

*\*Children may be counted multiple times if they were the victim of more than one abuse type in a given assessment, or the victim of subsequent abuse in calendar year 2014.*