

MAINE  EMS

COMMUNITY PARAMEDICINE IN MAINE

April 7, 2026 | 3:30-4:30



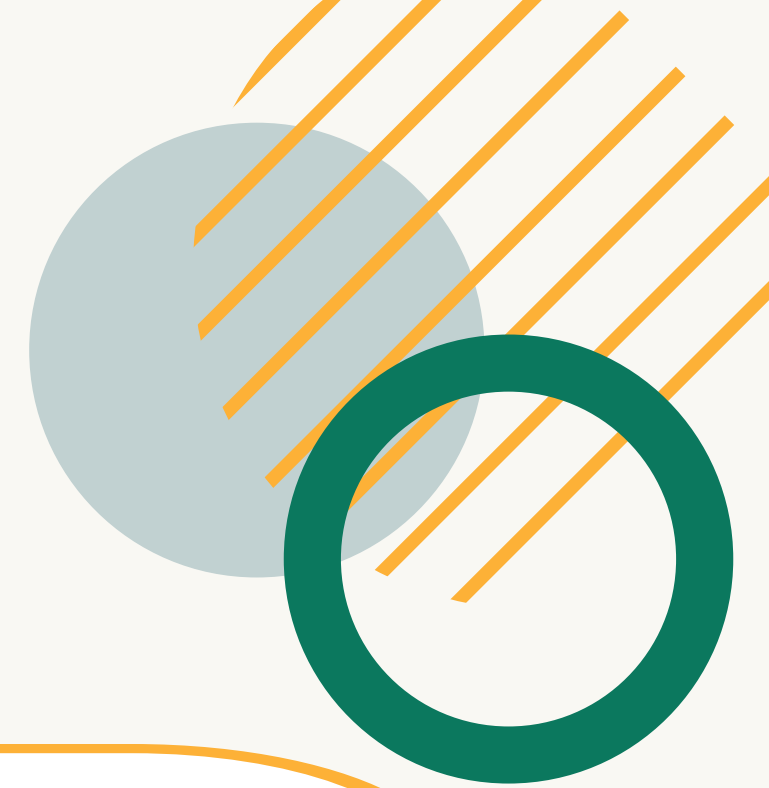
Soliana Harnish

LCSW



- Maine EMS Community Paramedicine Coordinator
- NASEMSO CP-MIH Committee Chair
- School Based Therapist
- MATCH Certified

Learning Objectives



1. Participants will be able to define Community Paramedicine and describe how it differs from traditional 911 emergency response services.
2. Explain the role of Community Paramedicine within Maine's healthcare continuum, including its integration with hospitals, primary care, behavioral health, and community-based organizations.
3. Participants will be able to recognize opportunities for cross-sector collaboration, including how healthcare systems, municipalities, payors, and social service agencies can partner with CP programs.

Definitions

Community Paramedicine (CP)

Community Paramedicine is a segment of Mobile Integrated Healthcare, and is a provider led, patient-centered delivery care model using appropriately educated Emergency Medical Service (EMS) clinicians in an expanded role to render care, facilitate a more efficient delivery of care, and enhance access to community resources.

Mobile Integrated Health (MIH)

Mobile Integrated Healthcare (MIH) is a coordinated, patient-centered, evidence-based, holistic model of care using collaborative, interdisciplinary teams to serve patient needs at the most appropriate level of care at a safe location of their convenience.

WHAT IS COMMUNITY PARAMEDICINE?

According to LD 1427:

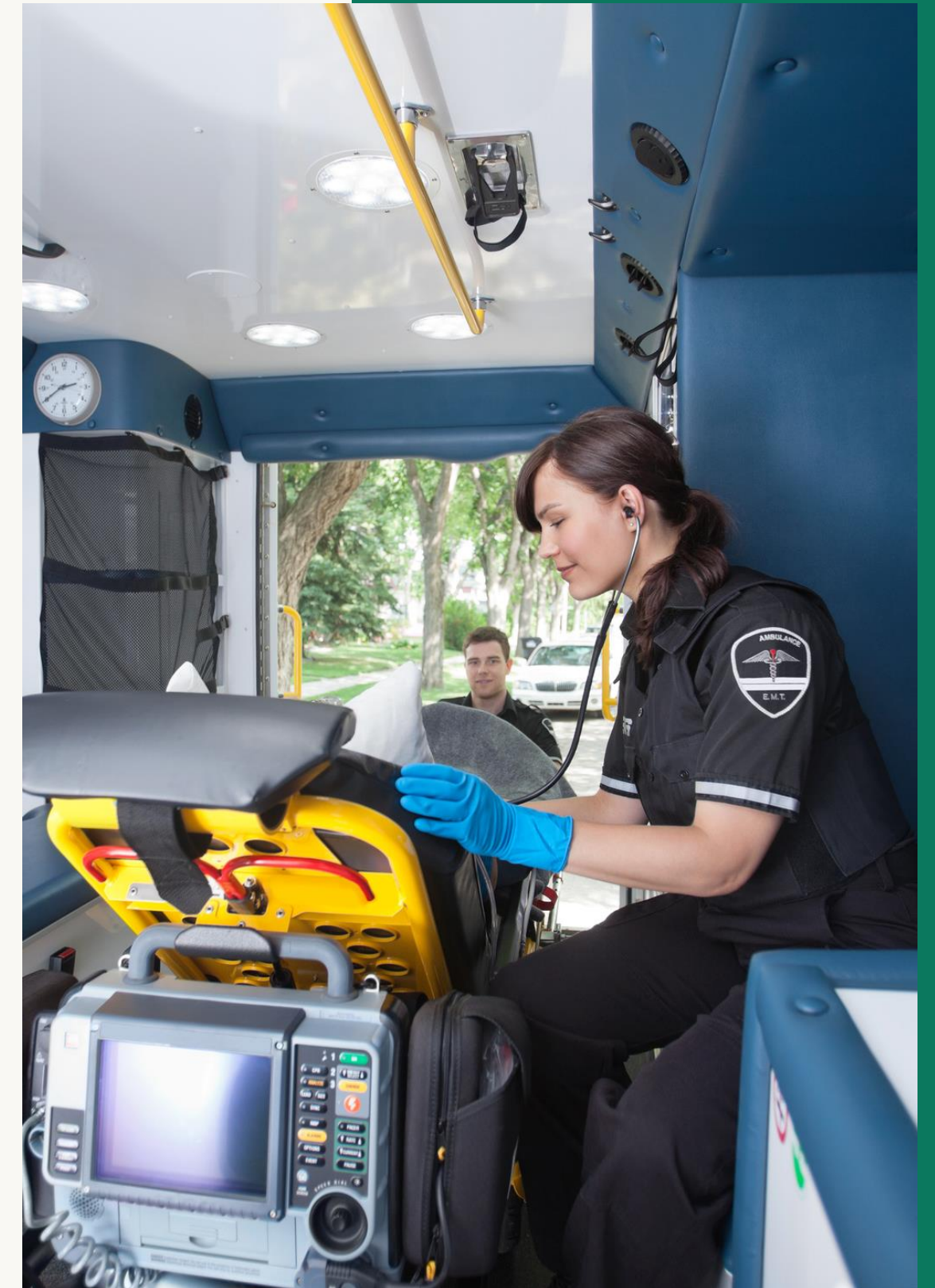
“Community Paramedicine means the practice by an emergency medical services provider primarily in an out-of-hospital setting of providing episodic patient evaluation, advice and treatment directed at preventing or improving a particular medical condition, within the scope of practice of the emergency medical services provider as specifically requested or directed by a physician.”

CP IS:

- Episodic
- Non-emergent
- Physician ordered
- Meets the patient where they are (on the street, in a shelter, at their home etc.)
- Aligns with patient’s plan of care

CP IS NOT:

- Substitute for other services
- 911 service
- Referred by the EMS provider
- Alternate route after 911 is initiated (ET3)



KEY Services



MEDICATION COMPLIANCE

Includes medication administration, pick up and sorting.



HOME SAFETY

Includes fall risk assessments and wellness checks.



CHRONIC CONDITIONS

Includes Diabetes, CHF, Asthma and COPD monitoring, support and education.



FOLLOW UP CARE

Includes vital checks, blood draws and SDOH referrals.



HISTORY

Community Paramedicine often is touted as a new concept, but Maine has been at the forefront of CP programs within the nation. CP has now been in Maine for over a decade.



2012

LD 1837 - Approved 12 CP pilot projects



2017

LD 1427 - Removed the pilot status



2021

Health Disparities Grant - over \$3 mil



2023

LD 883 - Home Health Exemption



Who can be served?

Anyone who needs care within the CP scope of practice. *IF* their physician determines that CP would support their plan of care.

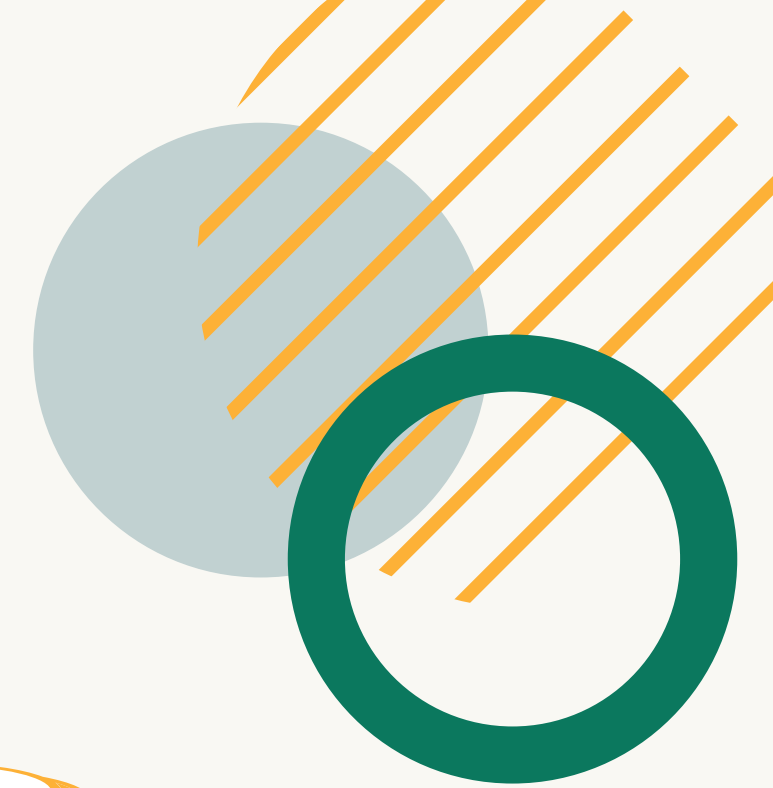
- Pediatric Patients
 - Aging Population
 - Uninsured or underinsured
- 

PROJECTS



- Scope of Practice: 3 levels
- Formulary
- Education Standards
- Rule

Agency License Requirements



Community Needs Assessment

Referral Pathway

Service Area

Primary Care Medical Director

Protocols

Training Plan

CP Licenses

Community Paramedicine Levels

	Community Paramedicine Level		
Licensure Level	Affiliate	Technician	Paramedic
EMT	✓		
AEMT	✓	✓	
Paramedic	✓	✓	✓

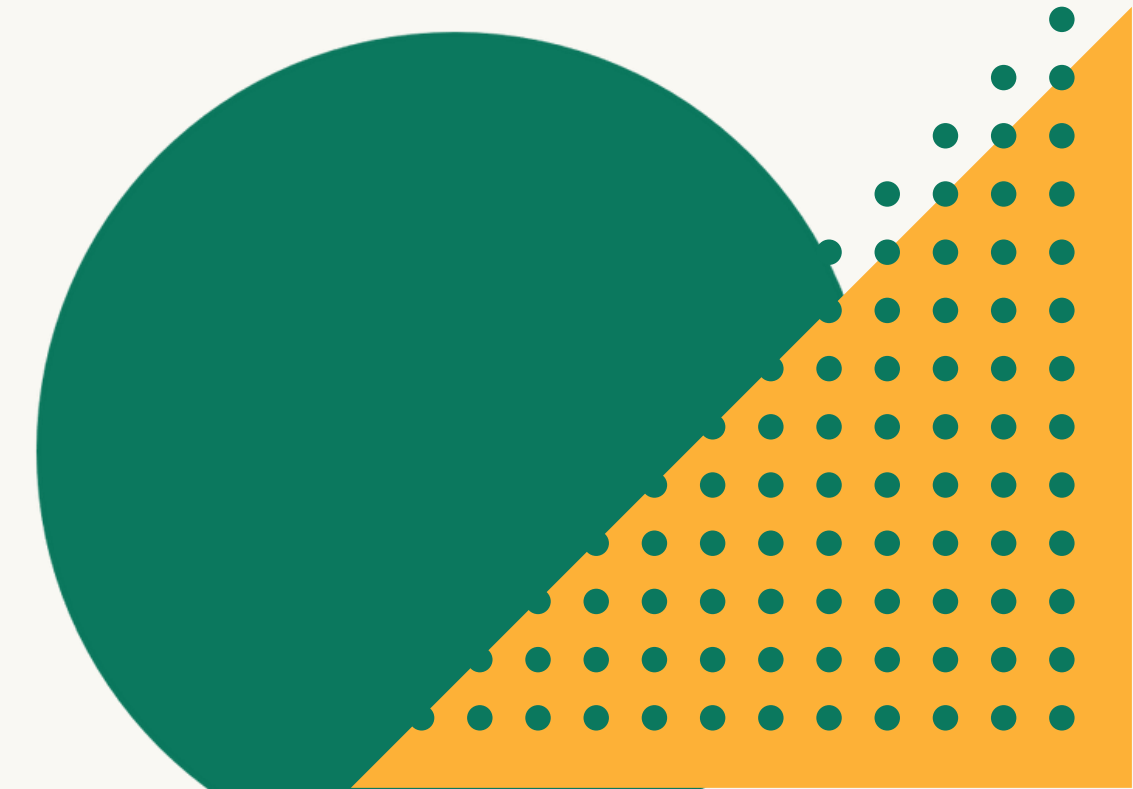
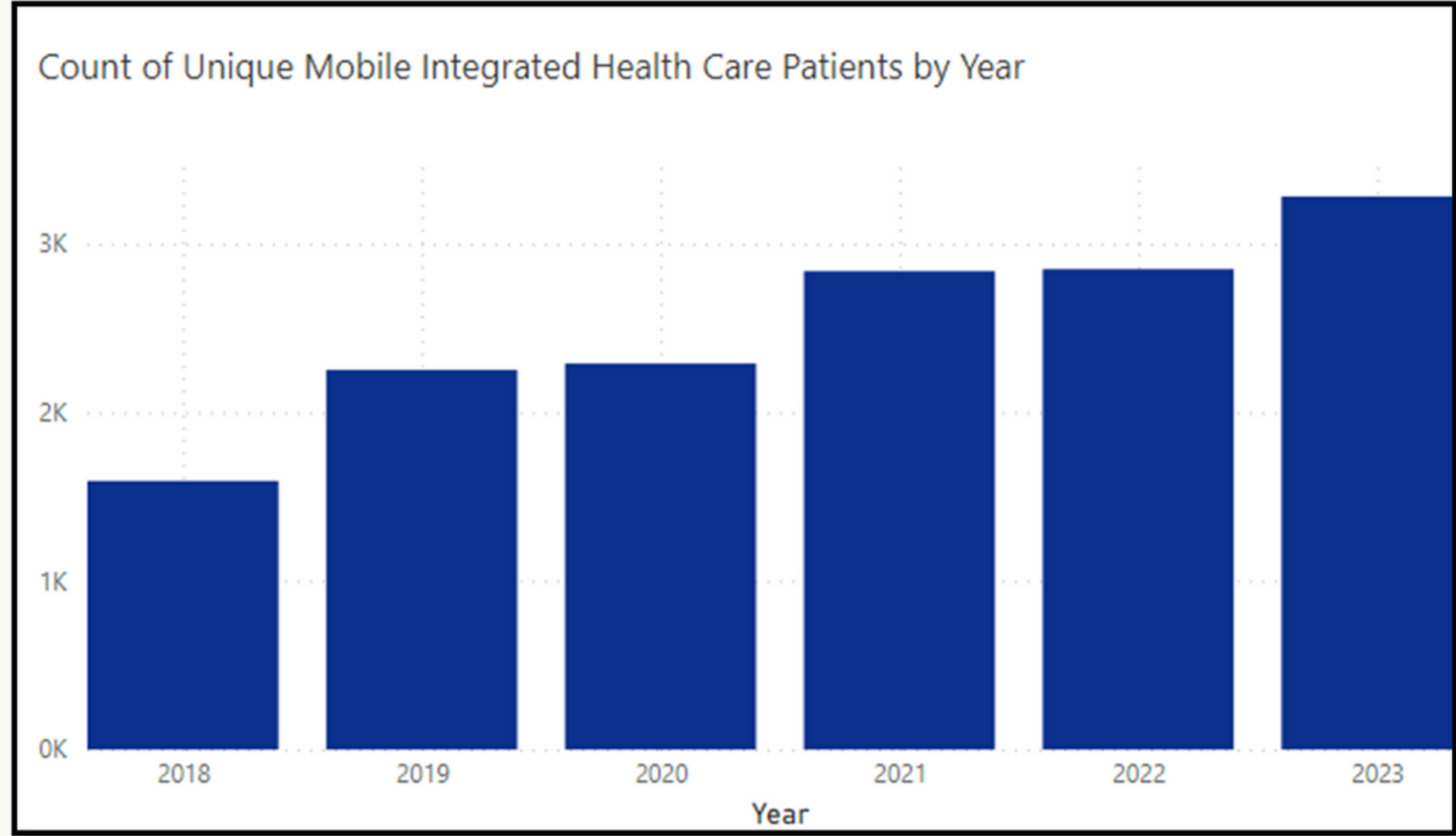
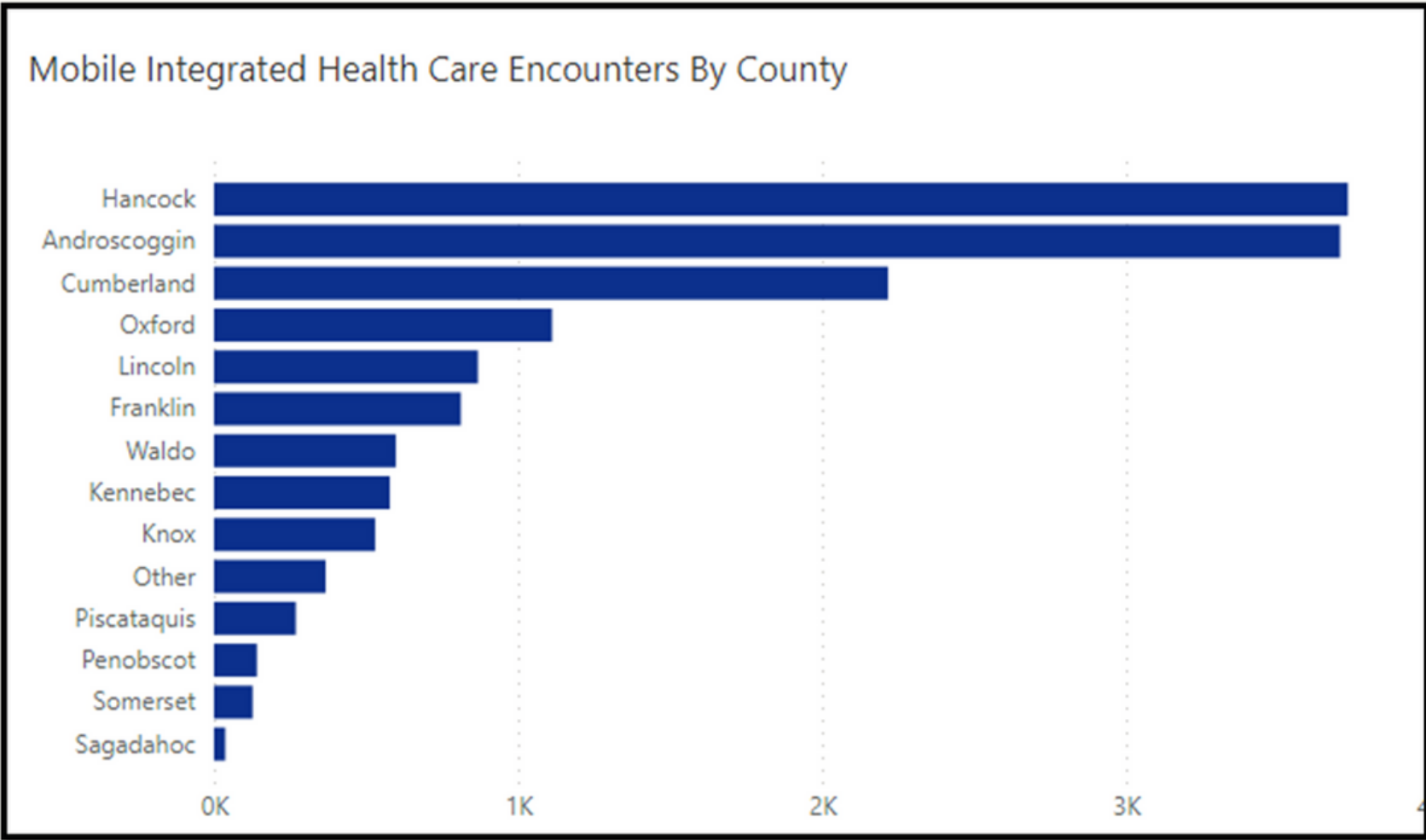
17 licensed agencies
59 licensed personnel

Chapter 19 of the Maine EMS rules requires both personnel licenses and service level licenses.

Statistics

Between 2018 and 2022

- 11,749 CP visits
- 1,796 unique patients
- 1,042 have Mainecare

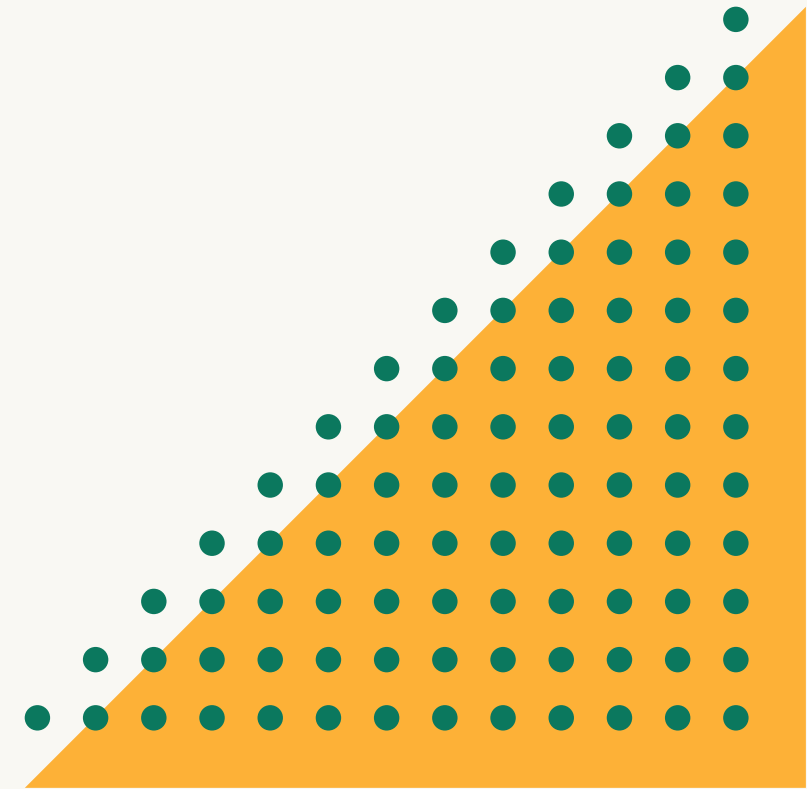


Stats cont

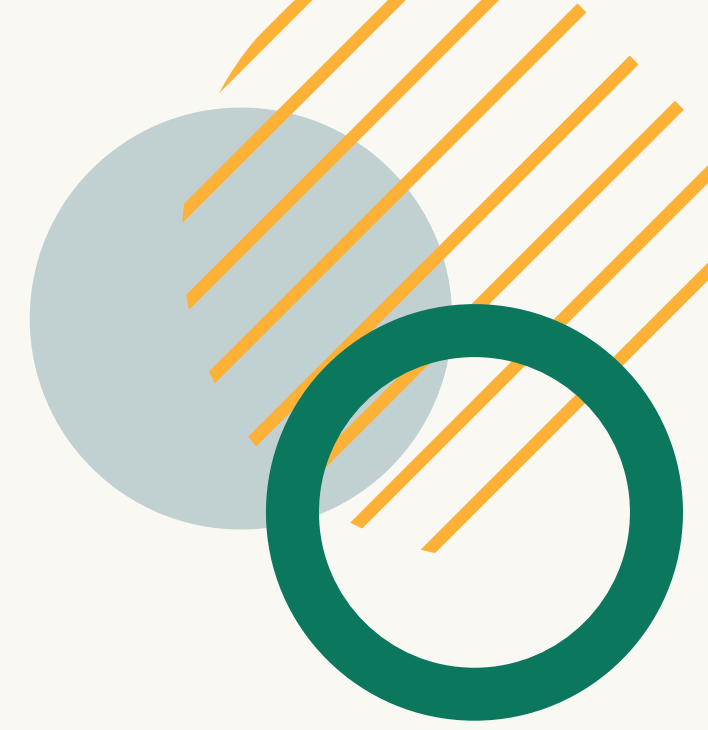
2023 – 2026

13,378 CP vists

Agencies range from:
2 visits to 4,235 in that time



Healthcare Collaboration



Follow Up Care

This could be post discharge, specialty, or support

Access to Care

Support while waiting for care

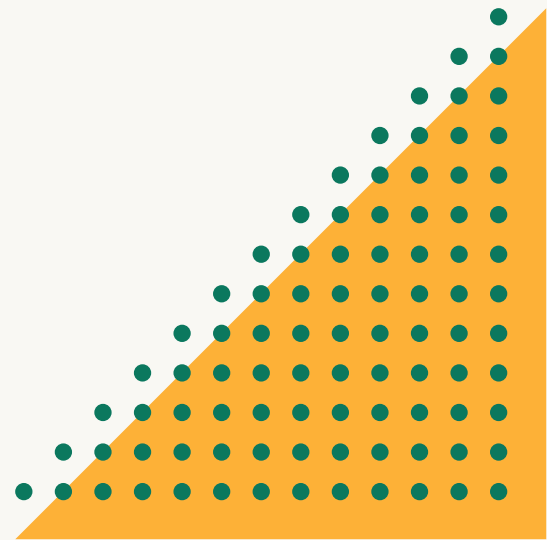
Connection to Care

Referrals for other services



Collaboration

- Referrals
- Starting a program
- Education
- New Ideas





Questions?



CONTACT



207 - 248 - 1190



soliana.harnish@maine.gov



maine.gov/ems

