

# Cancer Among Older Adults in Maine

A Maine Cancer Registry Special Report



## Maine Cancer Registry

Maine Department of Health and Human Services  
Maine Center for Disease Control and Prevention

220 Capitol Street  
11 State House Station  
Augusta, Maine 04333  
Tel (207)287-5272  
TTY users call Maine relay 711



## Contents

Key Findings .....	2
Overall (All Sites) New Cancer Cases and Deaths by Age Group .....	4
Site-Specific New Cancer Cases and Deaths by Age Group .....	11
Stage at Cancer Diagnosis by Age Group .....	15
Technical Notes.....	18
Appendix .....	20

# Key Findings

## CANCER AMONG OLDER ADULTS

### Most new cancer cases and cancer deaths in Maine occur among those age 65 and older.



- Currently, more than 5,000 new cancer cases are diagnosed and more than 2,000 cancer deaths occur among Mainers age 65 and older each year.
- While nearly 60% of new cancer cases are among Mainers age 65 and older, more than 70% of cancer deaths occur in this age group.
- Nearly 20% of all cancer deaths occur among Mainers age 85 and older, despite less than 10% of new cancer cases occurring in this age group.

### Trends Over Time are Improving



- Over the past 20 years, overall cancer death rates have improved (declined) significantly among Mainers age 65 and older.
- Rates of new cancer cases (incidence) have generally improved (declined) in this age group also.

### The Most Common Cancer Types among Older Adults in Maine are Prostate, Breast, and Lung

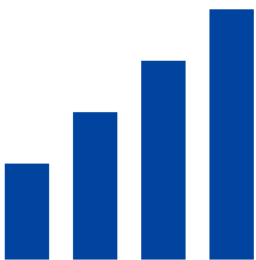


- Prostate cancer (among males), breast cancer (among females), and lung and bronchus cancer (among both males and females) are the most commonly diagnosed new cancers among Mainers age 65 and older.
- Lung and bronchus cancer is the leading cause of cancer death among Mainers age 65 and older.
- The percentage of cancer deaths that are of ill-defined, secondary, or unspecified sites increases with age; nearly 9% of cancer deaths among those age 85 and older are in this category.

# Key Findings

## CANCER AMONG OLDER ADULTS

### Patterns in Cancer Rates by Age Group Vary by Cancer Type



- Among Mainers age 65 years and older, some site-specific rates of new cancers increase with age while others decrease with age after age 65.
- Rates of new urinary bladder, colon and rectum, melanoma, leukemia, and oral and pharyngeal cancers all increased with age, with the highest rates among Mainers age 85 and older.
- Site-specific cancer death rates, however, primarily increase steadily with age.

### Unstaged Cancers are More Common Among Older Age Groups



- For the most common site-specific cancers among Mainers age 65 and older, the percentage of cancer cases that are unstaged is substantially higher among those age 85 and older compared to other age groups.
- Many of these unstaged cancers among Mainers age 85 and older are reported to the Maine Cancer Registry by death certificate or autopsy only.

### Acknowledgements

**Prepared by:** Sara L. Huston<sup>1</sup>, Jessica Cross<sup>1</sup>, Denise Yob<sup>1</sup>, Carolyn Bancroft<sup>2</sup>, Alison Green-Parsons<sup>1</sup>, Finn Teach<sup>1</sup>, and Kim Haggan<sup>2</sup>.

<sup>1</sup>University of Southern Maine <sup>2</sup> Maine Department of Health and Human Services, Maine Cancer Registry

**Suggested Citation:** Huston SL, Cross J, Yob D, Bancroft C, Green-Parsons A, Teach F, Haggan K. Cancer in the Elderly in Maine. Augusta ME: Maine Department of Health and Human Services, Maine Center for Disease Control and Prevention, Maine Cancer Registry; 2022.

The Maine Cancer Registry wishes to thank the cancer registrars and reporters at hospitals and physician offices throughout Maine as well as our staff Kathy Boris and Jacqueline Neas.

Support for this report was provided in part by National Program of Cancer Registries, U.S. Centers for Disease Control and Prevention, Cooperative Agreement number [1NU58DP0071 13-01-00](#) and by the Maine Department of Health and Human Services.

# Overall (All Sites) New Cancer Cases and Deaths by Age Group

This section presents information on overall (all cancer sites combined) new cancer cases and deaths among Mainers age 65 and older.

**Most new cancer cases and cancer deaths in Maine occur among those age 65 and older. In Maine, older adults make up an even higher percentage of cancer deaths than new cancer cases.**

- Currently, more than 5,000 new cancer cases are diagnosed and more than 2,000 cancer deaths occur among Mainers age 65 and older each year.
- While about 6 in 10 (58.1%) new cancer cases (incidence) are among Mainers age 65 and older, more than 7 in 10 (72.6%) cancer deaths (mortality) occur in this age group.
- Nearly 20% (17.8%) of all cancer deaths occur among Mainers age 85 and older, despite less than 10% (8.2%) of new cancer cases occurring in this age group.

Figure 1. Percentage of Total (All Sites) New Cancer Cases and Cancer Deaths Occurring by Age Group, Maine, 2009-2018

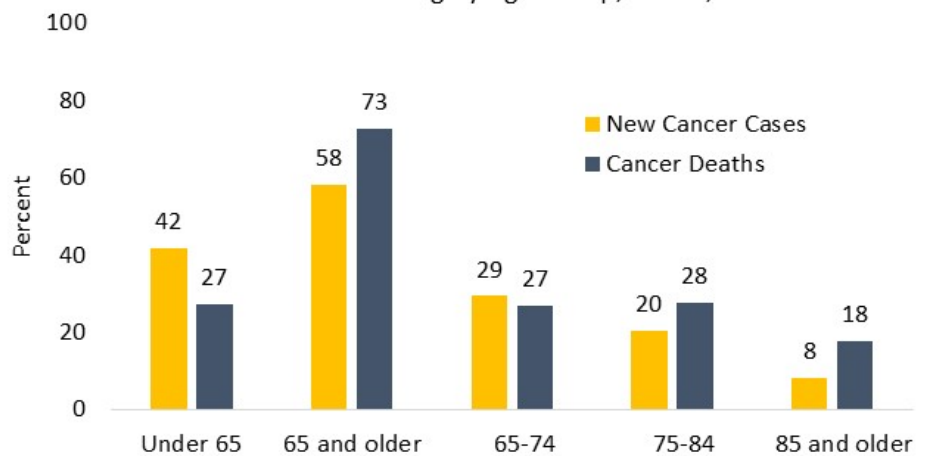


Table 1. New Cancer Cases by Age Group, U.S. and Maine, 2009-2018

	Age Group	Average Annual Number	% of Total New Cases	Crude Rate per 100,000	95% Confidence Interval of Crude Rate
Maine	Under 65	3,653	41.9	339.5	336.1 - 343.0
	<b>65 and over</b>	<b>5,069</b>	<b>58.1</b>	<b>2,132.1</b>	<b>2,113.6 - 2,150.8</b>
	65-74	2,563	29.4	1,900.1	1,876.9 - 1,923.5
	75-84	1,787	20.5	2,511.0	2,472.3 - 2,550.3
	85 and over	719	8.2	2,294.9	2,242.2 - 2,348.6
	Total (All Ages)	8,722	100.0	664.0	659.6 - 668.4
U.S.	Under 65	739,356	44.9	273.3	273.1 - 273.5
	<b>65 and over</b>	<b>907,642</b>	<b>55.1</b>	<b>2,001.2</b>	<b>1,999.9 - 2,002.5</b>
	65-74	463,913	28.2	1,811.3	1,809.6 - 1,812.9
	75-84	314,189	19.1	2,287.7	2,285.2 - 2,290.3
	85 and over	129,540	7.9	2,155.8	2,152.1 - 2,159.5
	Total (All Ages)	1,646,998	100.0	521.3	521.1 - 521.6

Related Figures and Tables: Figure 1; Tables 1 (this page) and 2 (page 6).

## Overall (all sites) New Cancer Cases and Deaths by Age Group

**Overall (all-sites) cancer death rates increased with age among both Maine males and females, and rates of new cancer cases also increased with age among males.**

**Rates of new cancer cases increased among females until the 75-84 year age group and then were slightly lower in the 85 years and older age group.**

**Maine males age 65 and older had higher overall (all-sites) rates of new cancer cases and cancer deaths than females in the same age groups.**

- New cases:** Overall (all-sites) rates of new cancer cases increased with age among Maine males, from 322.0 per 100,000 among those under 65 years of age, to 2,183.2 in the 65-74 year age group, 2,998.7 in the 75-84 year age group, and 3,073.8 in the 85 years and older age group. Among Maine females, rates of new cancer cases also increased from 357.0 per 100,000 among those under 65 years of age to 1,638.1 in the 65-74 year age group and 2,109.1 in the 75-84 year age group, and then dropped slightly to 1,899.8 in the 85 years and older age group.
- Deaths:** Overall (all-sites) cancer death rates increased with age among both Maine males and females. Among Maine males, cancer death rates increased from 88.9 per 100,000 among those under 65 years of age, to 741.8 in the 65-74 year age group, 1,548.9 in the 75-84 year age group, and 2,581.8 in the 85 years and older age group. Among Maine females, cancer death rates increased from 74.8 per 100,000 among those under 65 years of age, to 558.2 in the 65-74 year age group, 1,034.2 in the 75-84 year age group, and 1,499.1 in the 85 years and older age group.

*Related Figures and Tables: Figures 2 and 3 (this page); Tables 3-6 (see appendix).*

Figure 2. Rates of **New Cancer Cases (All Sites)** by Sex and Age Group, Maine, 2009-2018

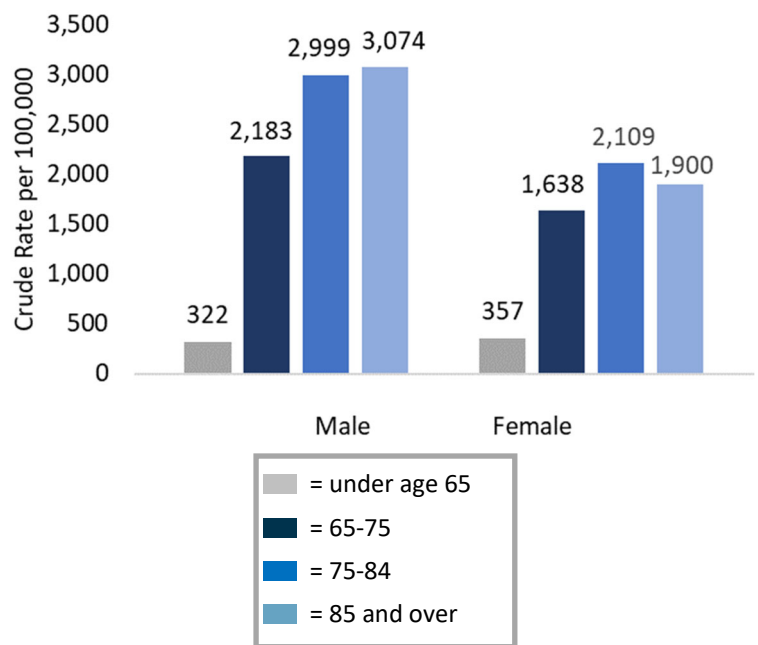
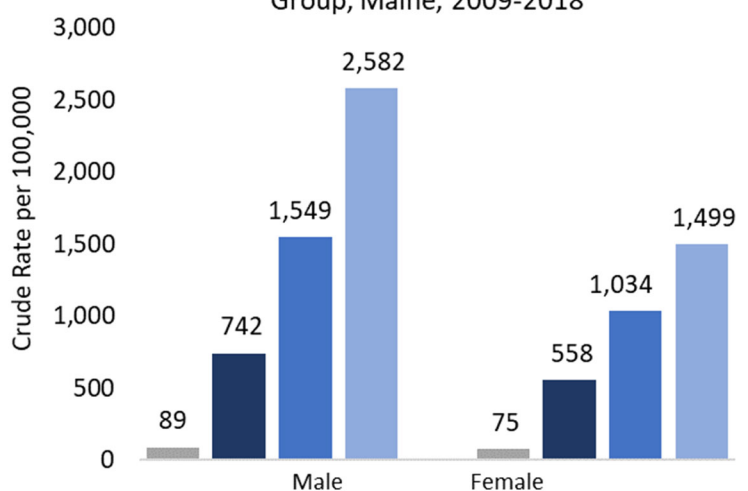


Figure 3. Cancer **Death Rates (All Sites)** by Sex and Age Group, Maine, 2009-2018



# Overall (all sites) New Cancer Cases and Deaths by Age Group

**Compared to the U.S., Maine’s rates of new cancer cases and cancer deaths were significantly higher in all age groups, while the percentage of new cancer cases and cancer deaths occurring among those age 65 and older were similar or slightly higher.**

- **New cases:** The percentage of new cancer cases occurring among those age 65 and older was slightly higher in Maine (58.1%) than the U.S. (55.1%). The rate of new cancer cases was significantly higher in Maine than the U.S. for all age groups and overall.
- **Deaths:** The percentage of cancer deaths occurring among those age 65 and older was slightly higher in Maine (72.6%) than the U.S. (70.0%). The cancer death rate was significantly higher in Maine than U.S. for all age groups and overall.

*Related Figures and Tables: Figures 1-5 (Figure 1: page 4; Figures 2-3: previous page; Figures 4-5: this page); Tables 1 (page 4) and 2 (this page).*

Figure 4. Rates of **New Cancer Cases** (All Sites) by Age Group, Maine and the U.S., 2009-2018

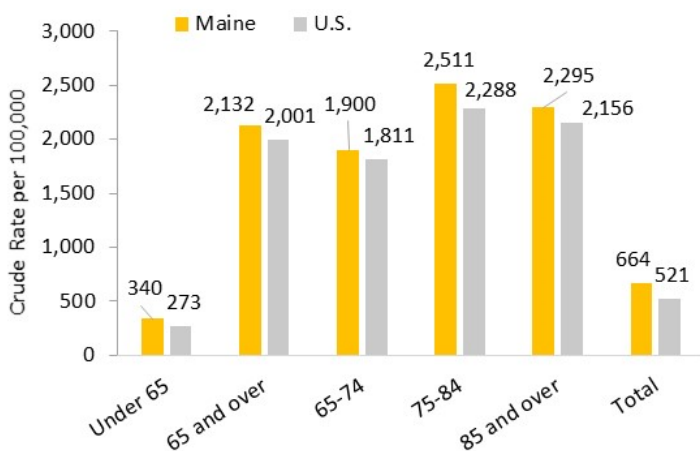
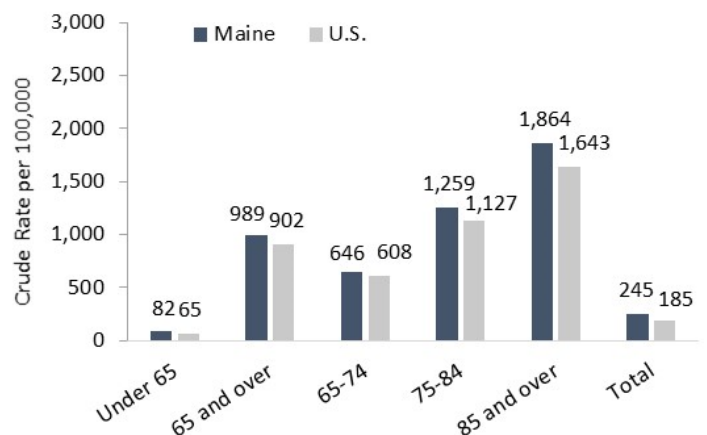


Figure 5. Cancer **Death Rates** (All Sites) by Age Group, U.S. and Maine, 2009-2018



**Table 2. Cancer Deaths by Age Group, Maine and U.S., 2009-2018**

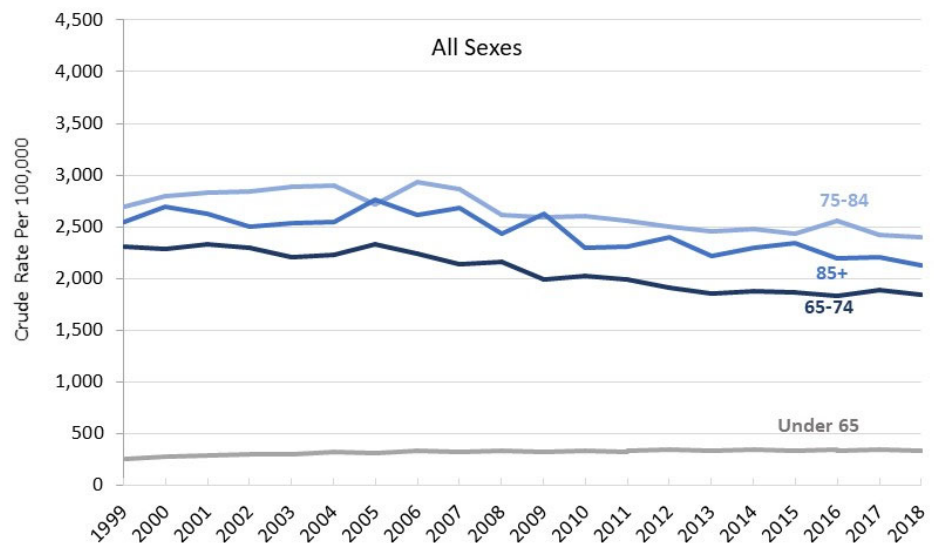
	Age Group	Average Annual Number	% of Total Deaths	Crude Rate per 100,000	95% Confidence Interval of Crude Rate
Maine	Under 65	893	27.4	81.8	80.0 - 83.5
	<b>65 and over</b>	<b>2,365</b>	<b>72.6</b>	<b>989.4</b>	<b>976.8 - 1,002.0</b>
	65-74	879	27.0	646.4	632.9 - 659.9
	75-84	906	27.8	1,259.2	1,233.3 - 1,285.1
	85 and over	580	17.8	1,863.7	1,815.7 - 1,911.7
	Total (All Ages)	<b>3,258</b>	<b>100.0</b>	<b>244.8</b>	<b>242.2 - 247.5</b>
U.S.	Under 65	175,945	30.0	64.7	64.6 - 64.8
	<b>65 and over</b>	<b>411,107</b>	<b>70.0</b>	<b>902.2</b>	<b>901.3 - 903.1</b>
	65-74	156,532	26.7	608.2	607.2 - 609.1
	75-84	155,373	26.5	1,126.6	1,124.8 - 1,128.3
	85 and over	99,201	16.9	1,643.2	1,640.0 - 1,646.5
	Total (All Ages)	587,052	100.0	185.0	184.8 - 185.1

## Overall (all sites) New Cancer Cases and Deaths by Age Group

**Over the past 20 years, the rates of new cancer cases have generally improved (declined) significantly among Mainers age 65 and older, with a few exceptions where rates have not changed significantly over time. Rates of new cancer cases have declined more rapidly for males than females.**

- 65-74 year age group:** Among Mainers 65-74 years of age, overall (all sexes) rates of new cancer cases declined significantly between 2005 and 2013, but rates have plateaued since then, with no significant change between 2013 (1,858.8 per 100,000) and 2018 (1,840.8 per 100,000). A similar pattern is seen among males in this age group, with rates of new cancer cases declining significantly between 1999 and 2006 and again between 2006 and 2014, but no significant change between 2014 (2,094.0 per 100,000) and 2018 (2,196.4 per 100,000). Rates of new cancer cases among females in this age group declined slowly but significantly from 1,738.5 to 1,512.3 per 100,000 between 1999 and 2018, an average annual percent decline of 0.5%.
- 75-84 year age group:** Among Mainers 75-84 years of age, overall rates of new cancer cases declined significantly from 2,883.8 to 2,394.9 per 100,000 between 2003 and 2018, an average annual percent decline of 1.3%. Rates of new cancer cases among males declined significantly between 1999 and 2018 in this age group, with an average annual percent decline of 1.8%, while there was no significant change over time among females in this age group.
- 85 years and older age group:** Among Mainers age 85 and older, overall rates of new cancer cases declined significantly from 2,544.5 to 2,128.9 per 100,000 between 1999 and 2018, an average annual percent decline of 1.1%. Rates of new cancer cases for males and females both declined significantly in this age group, with an average annual percent decline of 1.6% for males and 1.1% for females.

Figure 6. Trends over Time in Rates of **New Cancer Cases** by Sex and Age Group, Maine, 1999-2018

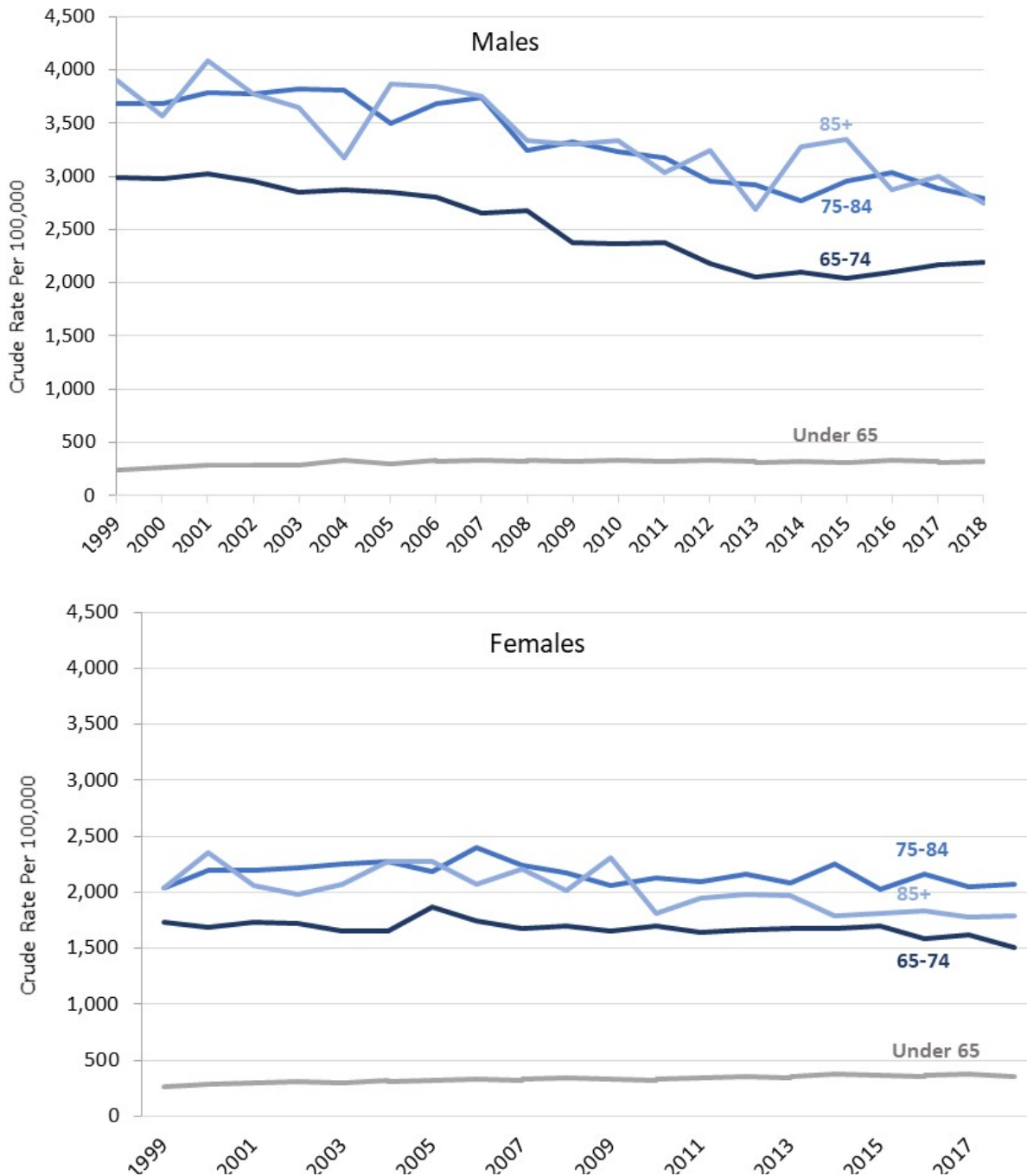


- Under 65 years age group:** While overall rates of new cancer cases among Mainers under the age of 65 have increased significantly from 251.0 to 339.9 per 100,000 between 1999 and 2018, this increase appears to be due primarily to aging within this age group (the age distribution moving to older ages within this age group over time) as age-adjusted rates of new cancer cases for those under the age of 65 either declined significantly or did not change significantly over time.

*Related Figures and Tables: Figure 6 (this page and next page); Tables 7 and 8 (see appendix).*

# Overall (all sites) New Cancer Cases and Deaths by Age Group

Figure 6 (continued). Trends over Time in Rates of **New Cancer Cases** by Sex and Age Group, Maine, 1999-2018



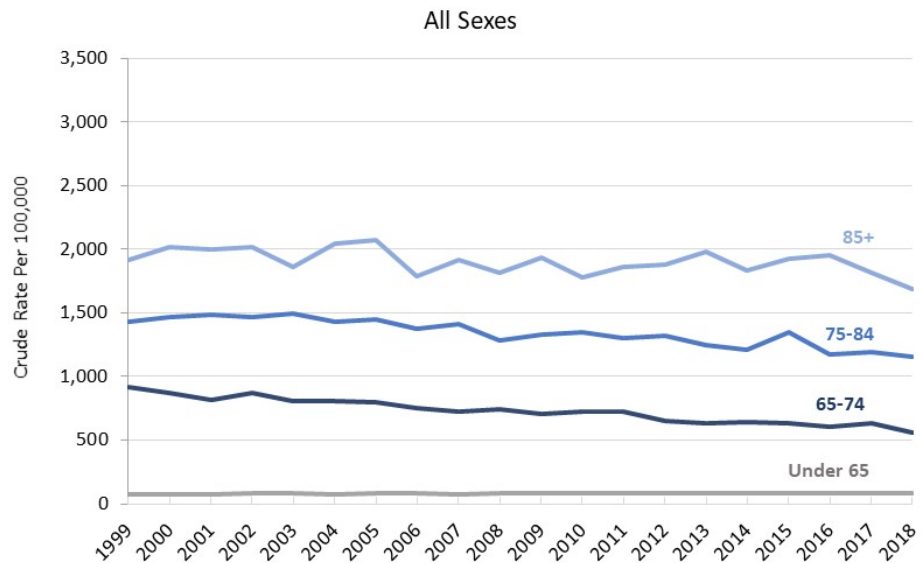


## Overall (all sites) New Cancer Cases and Deaths by Age Group

Over the past 20 years, cancer death rates have improved (declined) significantly among Mainers age 65 and older.

- 65-74 year age group:** Among Mainers 65-74 years of age, overall (all sexes) cancer death rates declined significantly from 920.0 to 560.1 per 100,000 between 1999 and 2018, an average annual percent decline of 2.2%. Cancer death rates for males and females both declined significantly in this age group, with an average annual percent decline of 2.5% for males and 1.9% for females.
- 75-84 year age group:** Among Mainers 75-84 years of age, overall cancer death rates declined significantly from 1,427.8 to 1,152.6 per 100,000 between 1999 and 2018, an average annual percent decline of 1.3%. Cancer death rates for males and females both declined significantly in this age group, with an average annual percent decline of 1.7% for males and 1.1% for females.
- 85 years and older age group:** Among Mainers age 85 and older, overall cancer death rates declined significantly from 1,914.1 to 1,687.7 per 100,000 between 1999 and 2018, an average annual percent decline of 0.5%. Cancer death rates for males declined significantly in this age group, with an average annual percent decline of 1.2%, while there was no significant change over time for females in this age group.
- Under 65 years age groups:** While overall cancer death rates among Mainers under the age of 65 have increased significantly from 75.3 to 83.1 per 100,000 between 1999 and 2018, this appears to be due to aging within this age group (the age distribution moving to older ages within this age group over time) as age-adjusted cancer death rates for those under the age of 65 either declined significantly or did not change significantly over time.

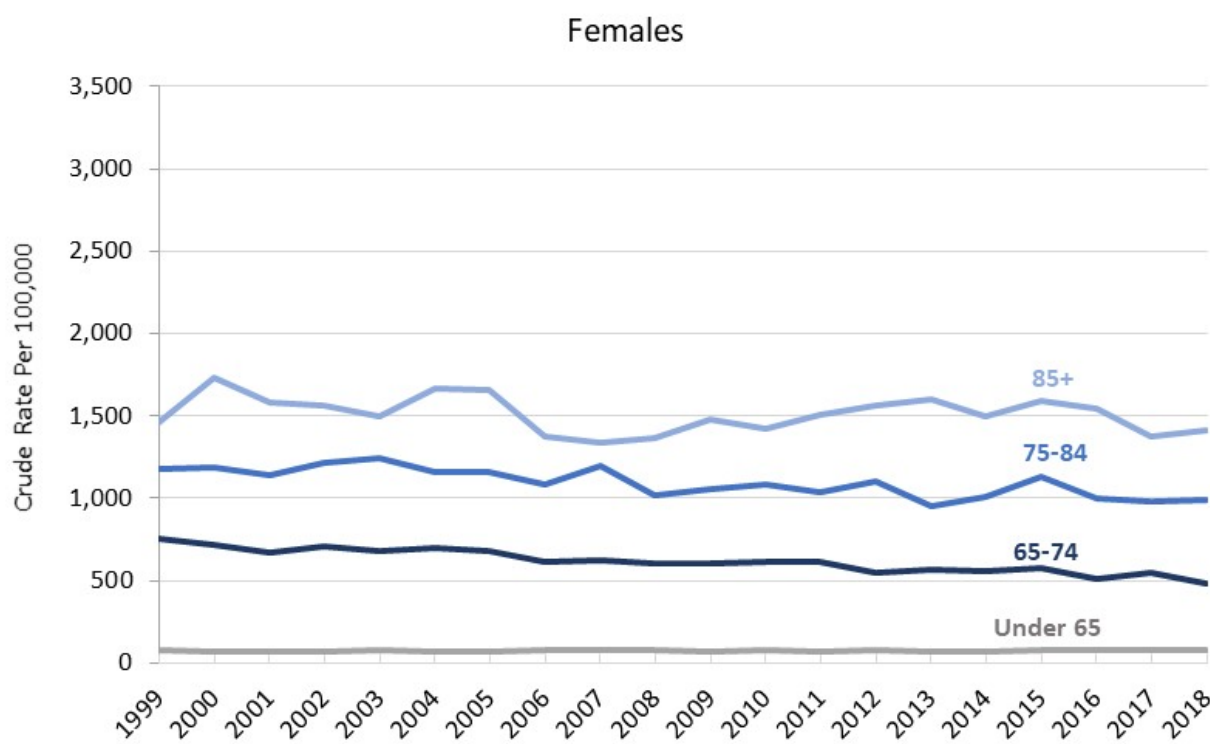
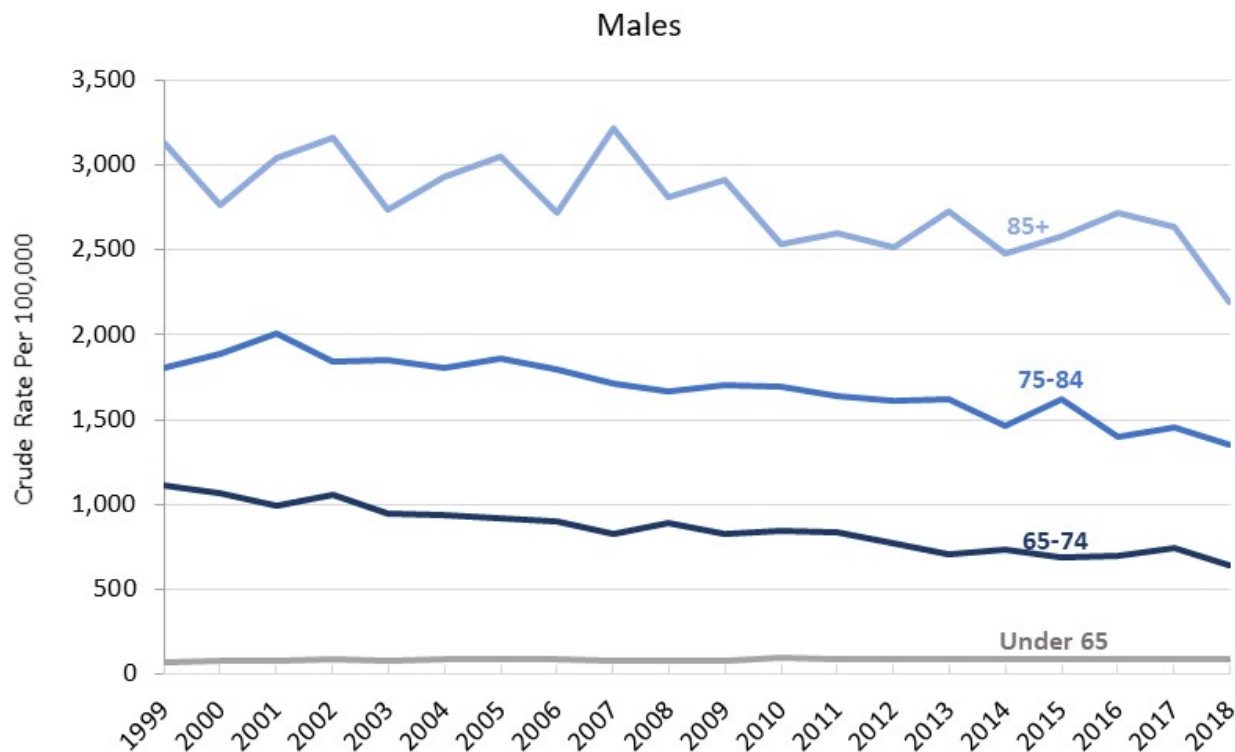
Figure 7. Trends over Time in **Cancer Death Rates** by Sex and Age Group, Maine, 1999-2018



Related Figures and Tables: Figure 7 (this page and next page); Tables 9-10 (see appendix).

# Overall (all sites) New Cancer Cases and Deaths by Age Group

Figure 7 (continued). Trends over Time in **Cancer Death Rates** by Sex and Age Group, Maine, 1999-2018



# Site-Specific New Cancer Cases and Deaths by Age Group

This section presents information on site-specific new cancer cases and deaths for some of the most common cancer types among Mainers age 65 and older.

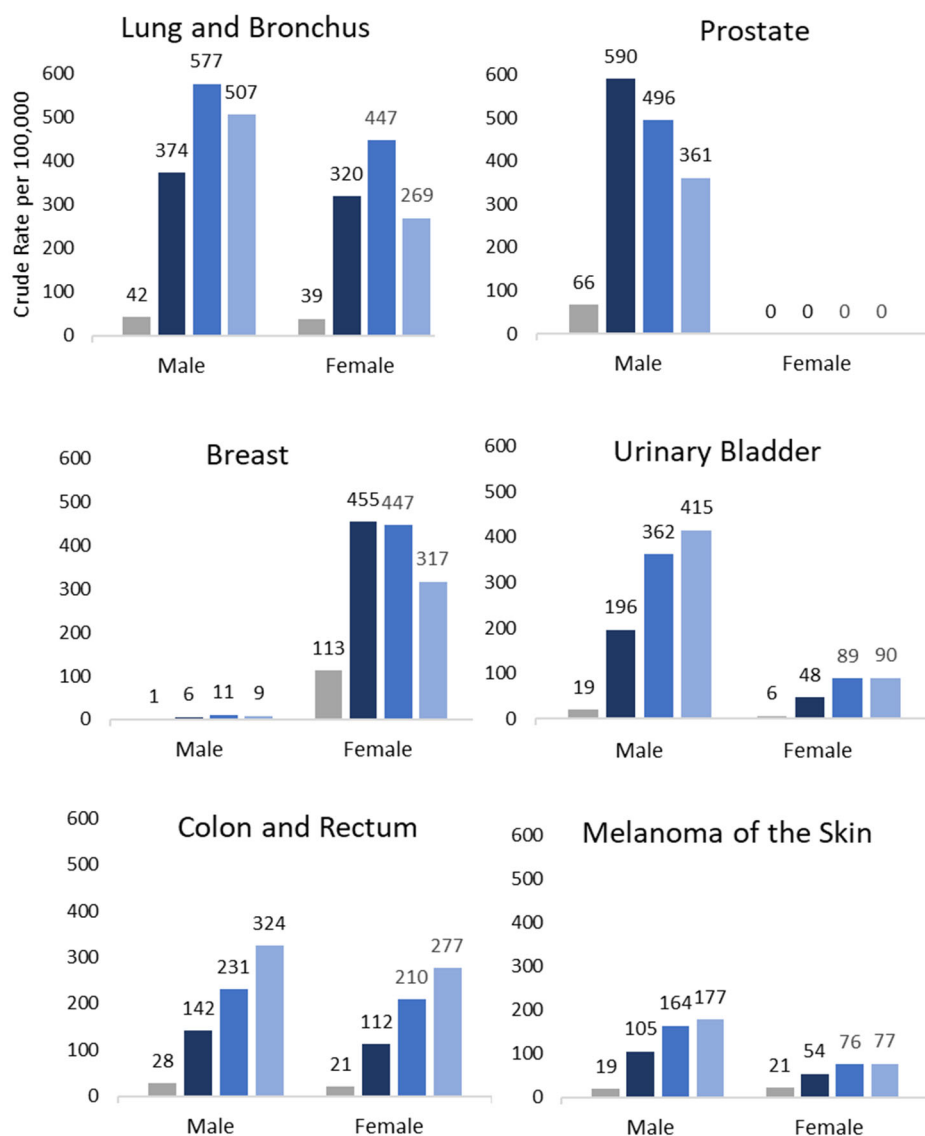
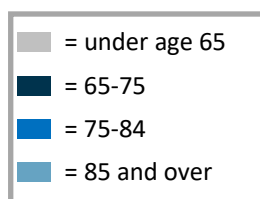
Prostate cancer (among males), breast cancer (among females), and lung and bronchus cancer (among both males and females) were the most commonly diagnosed new cancers among Mainers age 65 years and older. Lung and bronchus cancer was the leading cause of cancer death among Mainers age 65 and older.

- New cases:** The most commonly diagnosed new cancer among all (all sexes combined) Mainers age 65 and older was lung and bronchus cancer (data not shown). Among Maine males, prostate cancer was the most commonly diagnosed new cancer among those 65-74, while lung and bronchus cancer was the most commonly diagnosed new cancer among those 75-84 and 85+. Among Maine females, breast cancer was the most commonly diagnosed new cancer among 65-74, 75-84, and 85+ age groups. Lung and bronchus cancer was a very close second among females ages 75-84 years.

- Deaths:** Lung and bronchus cancer was the leading cause of cancer death among Maine males and females age 65 and older. Prostate cancer was a very close second among Maine males age 85 and older.

Related Figures and Tables: Figures 8 (this and next page) and 9 (page 13 and 14); Tables 3-6 (see appendix).

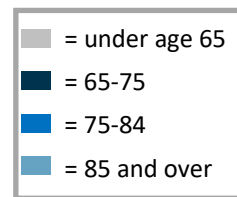
Figure 8. Site-specific Rates of New Cancer Cases by Age Group and Sex, Maine, 2009-2018



# Site-Specific New Cancer Cases and Deaths by Age Group

Among Mainers age 65 older, the relationship between age and the rate of new cancers cases varied by site, with some site-specific cancers increasing with age and others decreasing with age after age 65. Most site-specific cancer death rates increased steadily with age.

Figure 8 (continued). Site-specific Rates of New Cancer Cases by Age Group and Sex, Maine, 2009-2018



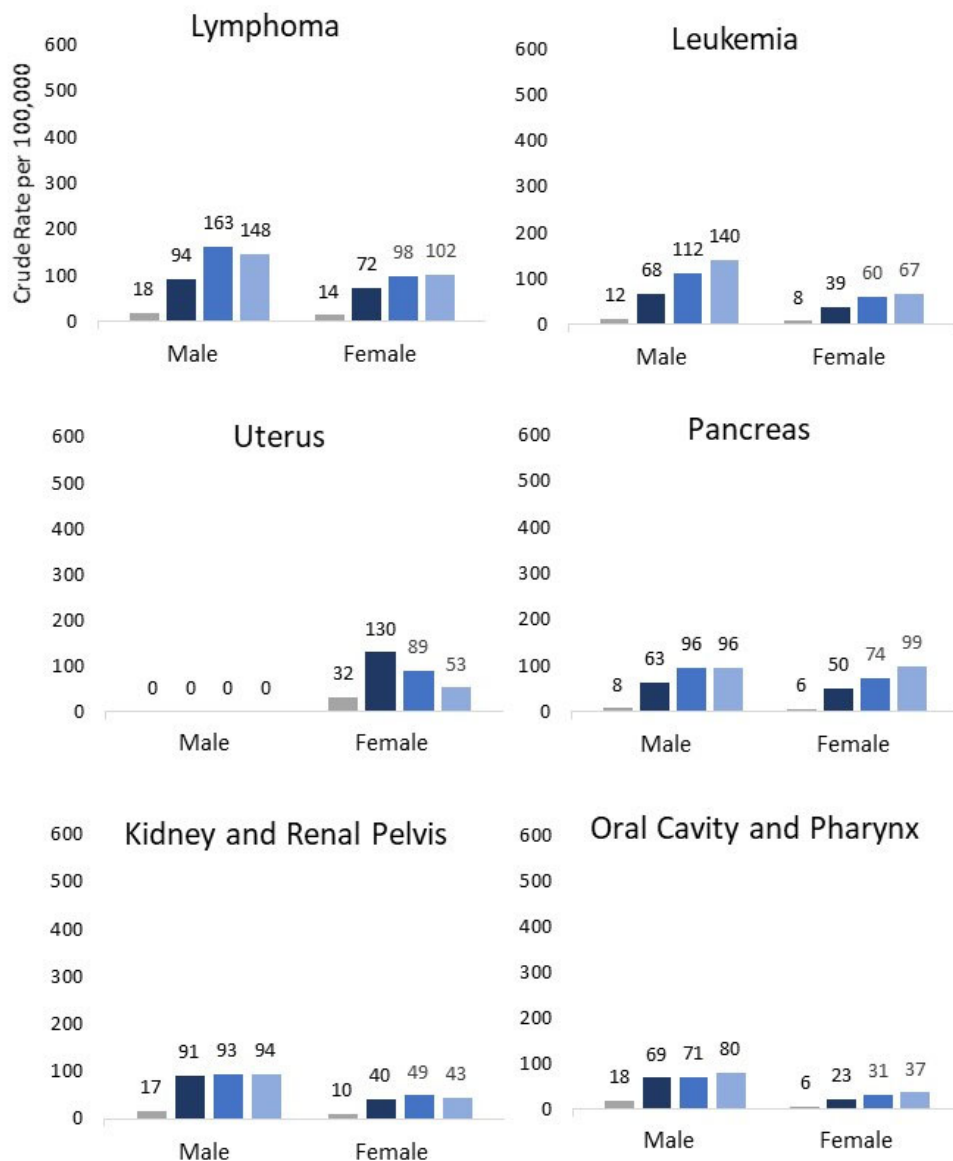
- New cases that increased with age through the 85 years and older age group:** Rates of new urinary bladder, colon and rectum, melanoma, leukemia, and oral and pharyngeal cancers all increased with age, with the highest rates among Mainers age 85 years and older. Rates of new lymphoma and pancreas cancers also increased with age among females.

- New cases that increased with age through the 75-84 year age group:** Rates of new lung and bronchus, male lymphoma, and male pancreas cancers increased with age until the 75-84 year age group, but then decreased or were similar in the 85 years and older age group as in the 75-84 year age group.

- New cases that decreased with age:** Rates of new prostate, female breast, and uterine cancers all were highest in the 65-74 year age group and then decreased with age, with progressively lower rates in the 75-84 and 85 years and older age groups.

- New cases with little variation across age groups:** Rates of new kidney and renal pelvis cancer cases were higher in the 65 years and older groups than in the under 65 years age group, but did not vary much by age group after age 65.

- Deaths:** Rates of the most common site-specific cancer deaths among Mainers age 65 and older all increased steadily with increasing age, with the exception of female lung and bronchus and ovarian cancer death rates, which increased until the 75-84 year age group and then had similar or slightly lower rates in the 85 years and older age group.



Related Figures and Tables: Figures 8 (this and previous page) and 9 (page 13 and 14); Tables 3-6 (see appendix).

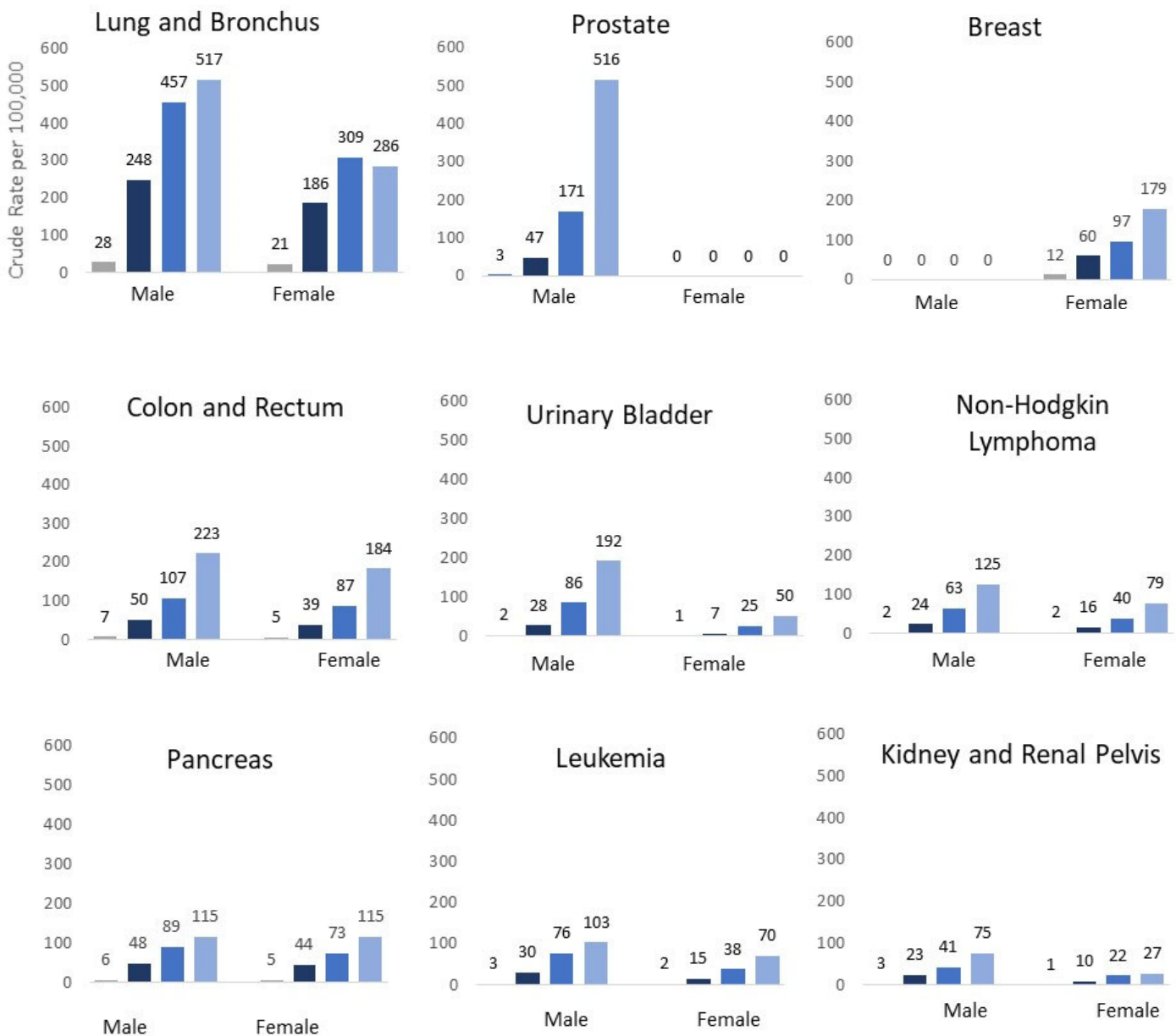
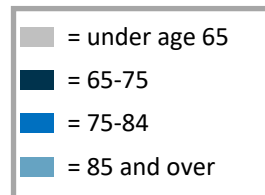
# Site-Specific New Cancer Cases and Deaths by Age Group

**The percentage of cancer deaths that were of an ill-defined, secondary, or unspecified site increased with age, and nearly 9% of cancer deaths among those age 85 and older were in this category.**

**Deaths:** The percentage of cancer deaths that were of an ill-defined, secondary, or unspecified site was highest among Mainers age 85 and older: 8.0% among males and 10.1% among females.

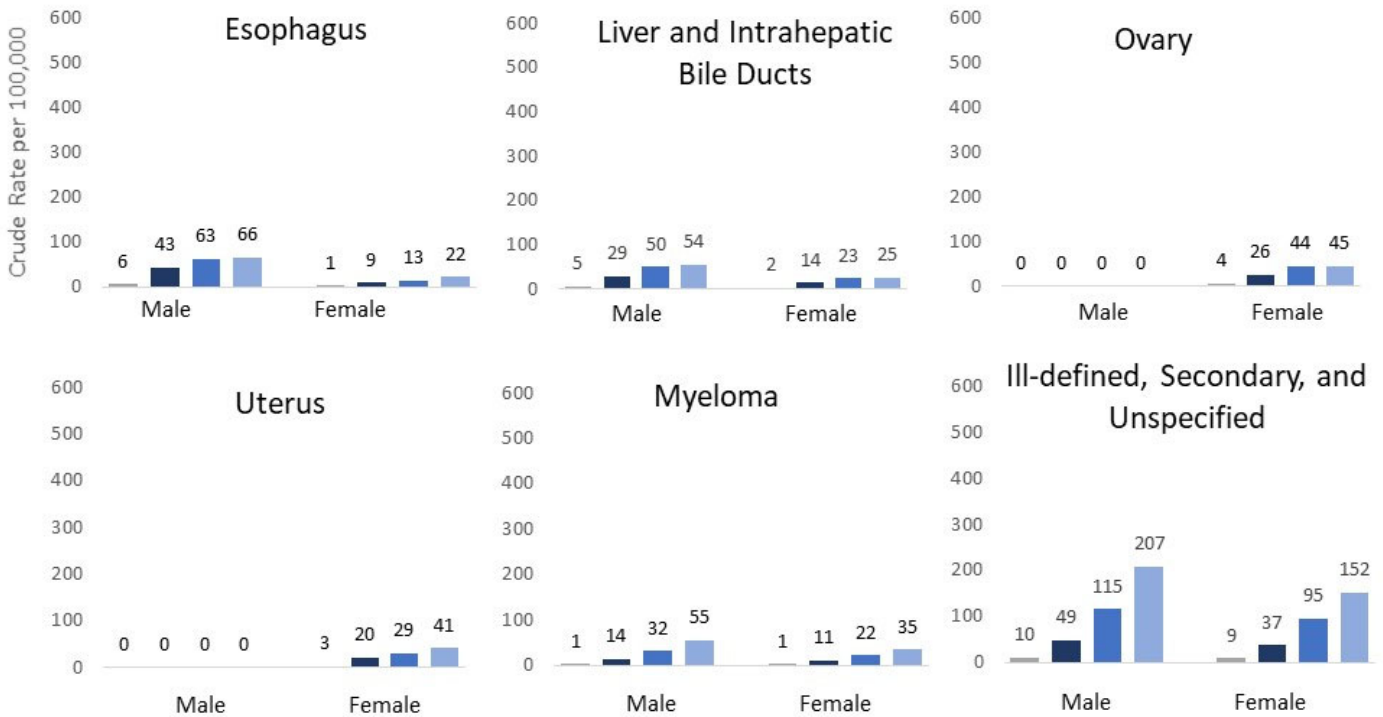
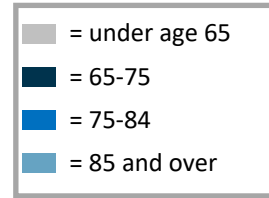
*Related Figures and Tables: Figures 9 (this and next page); Tables 5-6 (see appendix).*

Figure 9. Site-specific Rates of **Cancer Deaths** by Age Group and Sex, Maine, 2009-2018



# Site-Specific New Cancer Cases and Deaths by Age Group

Figure 9 (continued). Site-specific Rates of **Cancer Deaths** by Age Group and Sex, Maine, 2009-2018



# Stage at Cancer Diagnosis by Age Group

This section describes stage at diagnosis for six of the most common cancers among Mainers age 65 and older: lung and bronchus, colon and rectum, prostate, female breast, pancreas, and urinary bladder.

## About Cancer Staging

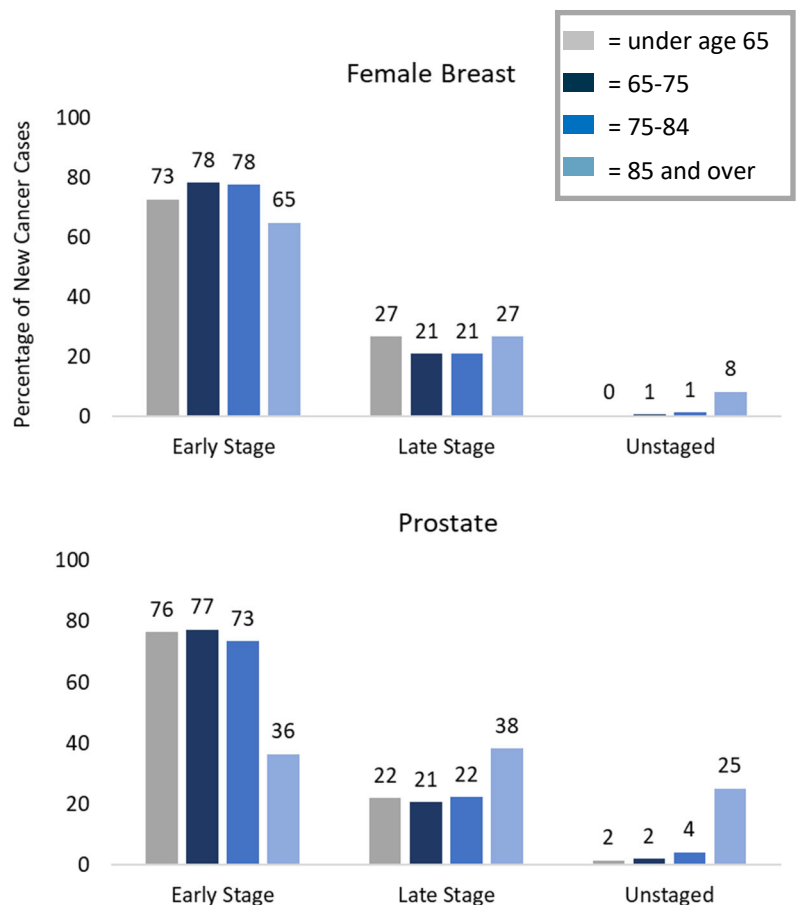
This report categorizes stage at cancer diagnosis into early stage, late stage, and unstaged. Early stage cancers are those diagnosed in situ or at a localized stage, before the cancer has spread beyond the organ or original site in which it began. Late stage cancers are those diagnosed at a regional or distant stage, after the cancer has spread beyond the original site to lymph nodes or other organs or tissues. Unstaged cancers are those for which there was not enough information to determine a stage.

**The percentage of cancer cases that were unstaged was substantially higher among those age 85 and older compared to other age groups. Many of these unstaged cancers in this age group were reported to the Maine Cancer Registry by death certificate or autopsy only.**

- Among Mainers age 85 and older, 21% of lung and bronchus cancer cases, 18% of colon and rectum cancer cases, 25% of prostate cancer cases, 8% of female breast cancer cases, 35% of pancreas cancer cases, and 8% of urinary bladder cases were unstaged.
- Most of the unstaged pancreas (55%), lung and bronchus (73%), female breast (61%), and prostate (70%) cancer cases in this age group were reported by death certificate or autopsy only. Nearly 20% of all pancreas cancer cases, 7% of colon and rectum cancer cases, 16% of lung and bronchus cancer cases, 5% of female breast cancer cases, 18% of prostate cancer cases, and 4% of urinary bladder cancer cases among Mainers age 85 and older were unstaged and reported by death certificate or autopsy only.

*Related Figures and Tables: Figure 10 (this and next page) and Figure 11 (page 17); Tables 11 and 12 (see appendix).*

Figure 10. Stage at Diagnosis by Age Group, for Selected Cancer Sites, Maine, 2009-2018



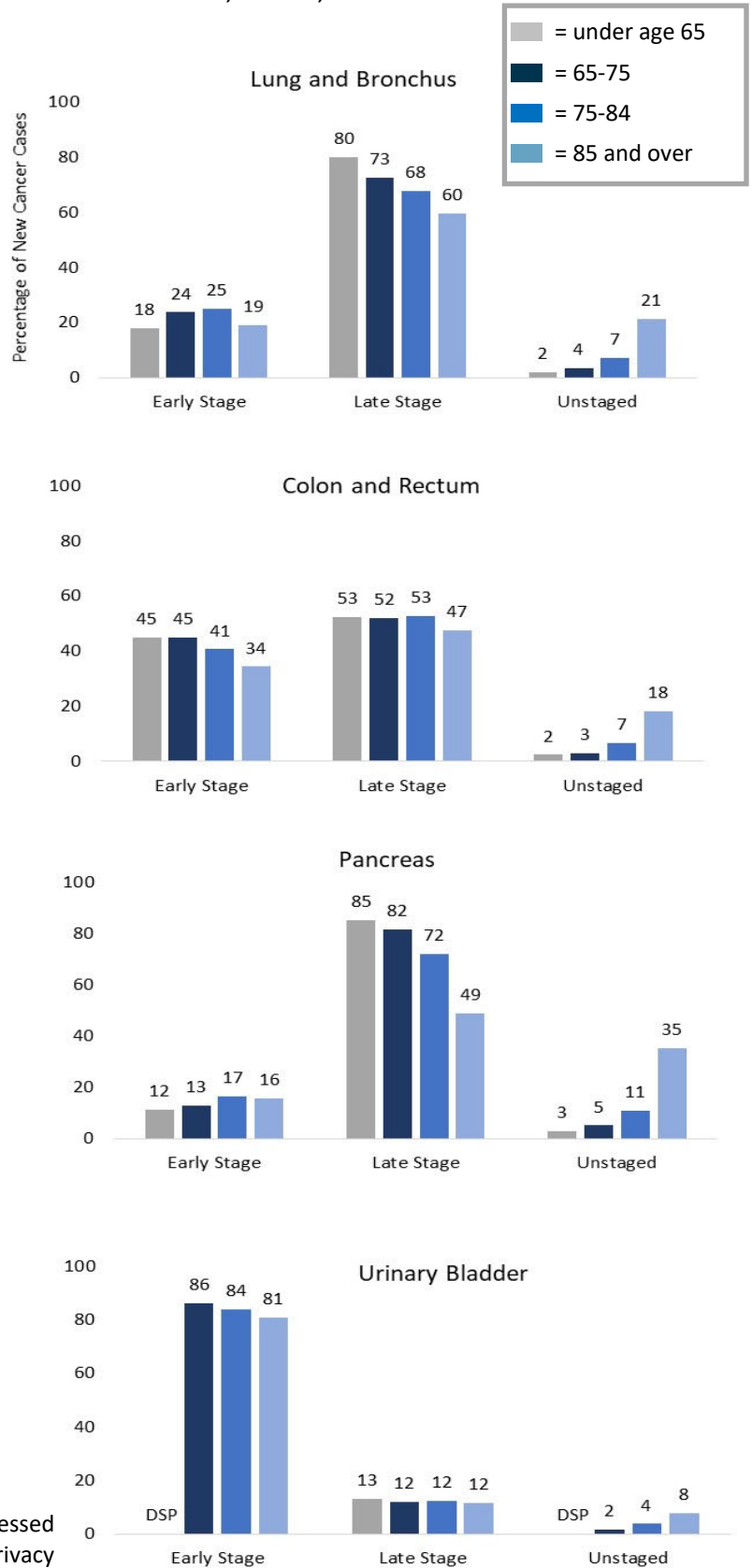
# Stage at Cancer Diagnosis by Age Group

Most female breast, prostate, and urinary bladder cancers were diagnosed at an early stage, however this percentage was lower among those in the 85 years and older age group than in the younger age groups.

- Female breast:** More than 70% of female breast cancers were diagnosed at an early stage among those under 65 years of age through 75-84 years of age, but this percentage dropped to 65% among those age 85 and older, due to a higher percentage of cases diagnosed at a late stage (27%) or that were unstaged (8%).
- Prostate:** More than 70% of prostate cancers were diagnosed at an early stage among those under 65 years of age through 75-84 years of age, but this percentage dropped to 36% among those age 85 and older, due to a higher percentage of cases diagnosed at a late stage (38%) or that were unstaged (25%).
- Urinary bladder:** More than 80% of urinary bladder cancers were diagnosed at an early stage among all age groups, but this percentage was lowest (81%) among those age 85 and older due to a higher percentage of cases that were unstaged (8%). The percentage of urinary bladder cancers that were diagnosed at a late stage was similar (around 12%) across age groups.

Related Figures and Tables: Figure 10 (this and previous page), Figure 11 (next page); Tables 11 and 12 (see appendix).

Figure 10 (continued). Stage at Diagnosis by Age Group, for Selected Cancer Sites, Maine, 2009-2018

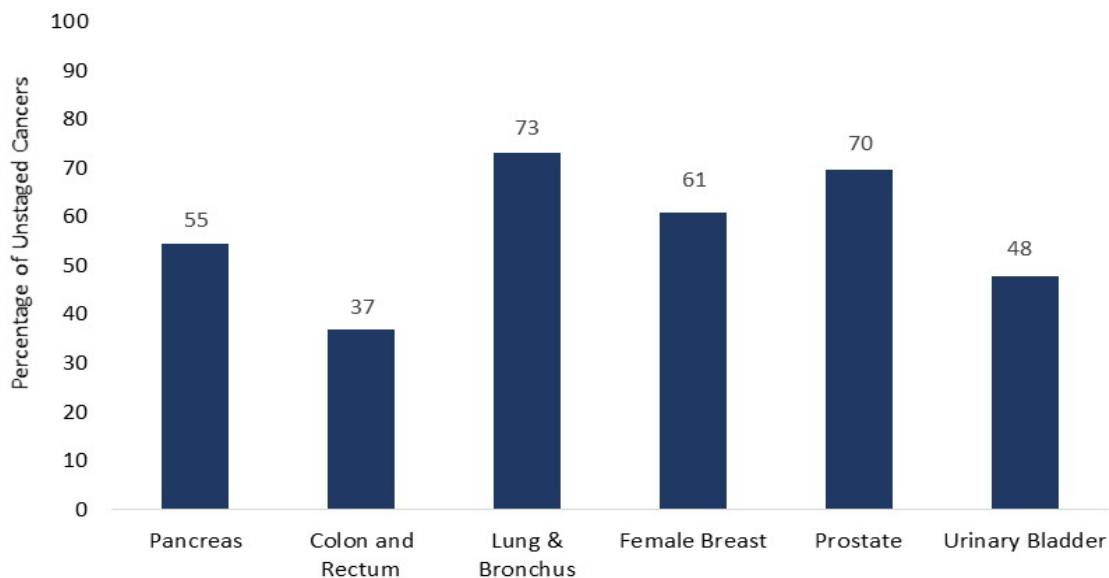


DSP: Data suppressed to protect privacy



## Stage at Cancer Diagnosis by Age Group

Figure 11. Percentage of Unstaged Cancers that were Reported by Death Certificate or Autopsy Only, among those age 85 and older, Maine, 2009-2018



**Most lung and bronchus, colon and rectum, and pancreas cancers were diagnosed at a late stage. A smaller percentage of lung and bronchus and colon and rectum cancers were diagnosed at an early stage among the 85 years and older age group than among the 65-74 or 75-84 year age groups.**

- **Lung and bronchus:** Only 25% or less of lung and bronchus cancers were diagnosed at an early stage across all age groups, and this percentage was somewhat lower among those age 85 and older (19%) than among those 65-84 years of age. While this age group had a lower percentage of cases that were diagnosed at a late stage (60%) compared to the other age groups, it had a much higher percentage that were unstaged (21%).
- **Colon and rectum:** Only 45% or less of colon and rectum cancers were diagnosed at an early stage across all age groups, and this percentage was lowest among those age 85 and older (34%). While this age group had a lower percentage of cases that were diagnosed at a late stage (47%) compared to the other age groups, it had a much higher percentage that were unstaged (18%).
- **Pancreas:** Less than 20% of pancreas cancers across all age groups were diagnosed at an early

stage, and this percentage was similar across age groups. The percentage of pancreas cancers diagnosed at a late stage decreased with age and was lowest in the 85 years and older age group (49%), while the percentage of unstaged cases increased with age and was highest in the 85 years and older age group (35%).

*Related Figures and Tables: Figure 10 (page 15-16), Figure 11 (this page); Table 11 and 12 (see appendix).*

# Technical Notes

## CANCER AMONG OLDER ADULTS

### **Incidence (New Cancer Cases):**

Incidence (new cases) data for Maine and the U.S. presented in this report were analyzed using Surveillance Research Program, National Cancer Institute SEER\*Stat software ([seer.cancer.gov/seerstat](https://seer.cancer.gov/seerstat)) version 8.3.9.

Incidence data presented in this report are based on SEER site recode ICD-O-3/WHO 2008 definitions, version 2008 ([seer.cancer.gov/siterecode/icdo3\\_dwho/home/index.html](https://seer.cancer.gov/siterecode/icdo3_dwho/home/index.html)) and are determined by primary site and histology. The primary site reported is the site of origin and not the metastatic site. Incidence rates do not include recurrences. The number of cancers may include multiple primary cancers occurring in one patient.

Maine Data Source: Maine CDC Cancer Registry, based on November 2020 NPCR-CSS data submission.

U.S. Data Source: NAACCR Incidence Data - Cancer in North America (CiNA) Analytic File, 1995-2018, Public Use (which includes data from CDC's National Program of Cancer Registries (NPCR), CCCR's Provincial and Territorial Registries, and the NCI's SEER registries, certified by the North American Association of Central Cancer Registries (NAACCR) as meeting high-quality incidence data standards for specified time periods, submitted December 2020).

### **Stage at Diagnosis:**

The staging analyses included tumors with behaviors of benign, borderline malignancy, in situ, malignant, only malignant in ICD-O-3, no longer reportable in ICD-O-3, and only malignant 2010+. Surveillance Research Program, National Cancer Institute SEER\*Stat software ([seer.cancer.gov/seerstat](https://seer.cancer.gov/seerstat)) version 8.3.9 was used for these analyses.

Early Stage: Cancers diagnosed in situ or at a localized stage, before the cancer has spread beyond the organ (the original site) in which it began.

Late Stage: Cancer diagnosed at a regional or distant stage, after the cancer has spread beyond the original site to lymph nodes or other organs and tissues.

Unstaged: Cancers for which there was not enough information to indicate a stage.

Data Source: NAACCR Incidence Data - Cancer in North America (CiNA) Analytic File, 1995-2018, Public Use.

### **Mortality:**

Maine and U.S. cancer mortality data were analyzed and obtained using the CDC Wonder System: Centers for Disease Control and Prevention, National Center for Health Statistics, Underlying Cause of Death 1999-2019 on CDC WONDER Online Database, released in 2020.

Mortality case definitions for site-specific cancers and "all sites" are based on the primary cancer site listed in the underlying cause of death, coded using the International Classification of Diseases, Tenth Edition (ICD-10), and categorized based on SEER Cause of Death Recode 1969+ definitions ([seer.cancer.gov/codrecode/1969\\_d03012018/index.html](https://seer.cancer.gov/codrecode/1969_d03012018/index.html)).

# Technical Notes

---

## **Trend Analysis:**

Trends in rates of new cancer cases and cancer deaths were analyzed using Statistical Methodology and Applications Branch, Surveillance Research Program, National Cancer Institute, Joinpoint Regression Program version 4.9.0.0 software ([surveillance.cancer.gov/joinpoint/](https://surveillance.cancer.gov/joinpoint/)).

Joinpoint regression analysis is a statistical method to determine significant changes in trend. Joinpoint regression tests for two things: 1) whether the trend is significantly increasing or decreasing and 2) whether there has been any change in trend over the time period. If there was a change in trend over the time period, it divides the time frame up into segments based on when that change in trend occurred and tests whether the trend within each segment is significantly different from zero; if there was no change in trend then it tests whether the trend across the entire period is significantly different from zero. If the trend within a time period or segment is significantly different from zero, we conclude the rate is significantly increasing or decreasing (based on whether the change is positive or negative), and if it is not significantly different from zero, we conclude the rate has plateaued.

Joinpoint results presented in this report are those from the Joinpoint-determined best fit model for each sex and age-specific group.

## **Confidence Intervals and Statistical Significance:**

Ninety-five percent confidence intervals are provided for all rates. If the 95 percent confidence intervals for two rates overlapped, the incidence rates were considered similar. If the confidence intervals did not overlap, the rates were considered to be significantly different.

# Appendix

## CANCER AMONG OLDER ADULTS

<b>Table</b>	<b>Page number</b>
Table 3. Site-specific New Cancer Cases among those under 65 years and 65 years and older by sex, Maine, 2009-2018	21
Table 4. Site-specific New Cancer Cases among those 65 years and older, by sex and age group, Maine, 2009-2018	22
Table 5. Site-specific Cancer Deaths among those under 65 years and 65 years and older by sex, Maine, 2009-2018	23
Table 6. Site-Specific Cancer Deaths among those age 65 and older, by sex and age group, Maine, 2009-2018	24
Table 7. Trends over time in New Cancer Cases by sex and age group, Maine, 1999-2018	26
Table 8. Joinpoint Trend Analysis Results: Annual Percent Change (APC) in rates of New Cancer Cases per 100,000 for Joinpoint-identified trend segments, by sex and age group, Maine, 1999-2018	29
Table 9. Trends over time in Cancer Deaths by sex and age group, Maine, 1999-2018	32
Table 10. Joinpoint Trend Analysis Results: Annual Percent Change (APC) in rates of Cancer Deaths per 100,000 for Joinpoint-identified trend segments, by sex and age group, Maine, 1999-2018	35
Table 11. Stage at Diagnosis of New Cancer Cases by site and age group, Maine, 2009-2018	38
Table 12. Reporting Sources of Unstaged New Cancer Cases by site and age group, Maine, 2009-2018	40

**Table 3. Site-specific New Cancer Cases among those under 65 years and 65 years and older by sex, Maine, 2009-2018**

Site	Under 65 Years				65 Years and Older			
	N	% of Total	Crude Rate	95% CI	N	% of Total	Crude Rate	95% CI
<b>Males</b>								
Total (All Cancer Sites)	17,301	100.0	<b>322.0</b>	317.2 - 326.8	26,783	100.0	<b>2,510.5</b>	2,480.5 - 2,540.7
Prostate	3,556	20.6	<b>66.2</b>	64.0 - 68.4	5,759	21.5	<b>539.8</b>	526.0 - 553.9
Lung and Bronchus	2,241	13.0	<b>41.7</b>	40.0 - 43.5	4,765	17.8	<b>446.6</b>	434.0 - 459.5
Urinary Bladder	1,039	6.0	<b>19.3</b>	18.2 - 20.5	2,841	10.6	<b>266.3</b>	256.6 - 276.3
Colon and Rectum	1,495	8.6	<b>27.8</b>	26.4 - 29.3	1,988	7.4	<b>186.3</b>	178.2 - 194.7
Melanoma of the Skin	1,008	5.8	<b>18.8</b>	17.6 - 20.0	1,378	5.1	<b>129.2</b>	122.4 - 136.2
Lymphoma	984	5.7	<b>18.3</b>	17.2 - 19.5	1,274	4.8	<b>119.4</b>	112.9 - 126.2
Kidney and Renal Pelvis	898	5.2	<b>16.7</b>	15.6 - 17.8	978	3.7	<b>91.7</b>	86.0 - 97.6
Leukemia	648	3.7	<b>12.1</b>	11.1 - 13.0	940	3.5	<b>88.1</b>	82.6 - 93.9
Pancreas	412	2.4	<b>7.7</b>	6.9 - 8.4	808	3.0	<b>75.7</b>	70.6 - 81.1
Oral Cavity and Pharynx	968	5.6	<b>18.0</b>	16.9 - 19.2	754	2.8	<b>70.7</b>	65.7 - 75.9
<b>Females</b>								
Total (All Cancer Sites)	19,227	100.0	<b>357.0</b>	352.0 - 362.1	23,910	100.0	<b>1,824.2</b>	1,801.1 - 1,847.5
Breast	6,103	31.7	<b>113.3</b>	110.5 - 116.2	5,644	23.6	<b>430.6</b>	419.4 - 442.0
Lung and Bronchus	2,081	10.8	<b>38.6</b>	37.0 - 40.3	4,597	19.2	<b>350.7</b>	340.7 - 361.0
Colon and Rectum	1,138	5.9	<b>21.1</b>	19.9 - 22.4	2,204	9.2	<b>168.2</b>	161.2 - 175.3
Uterus (Corpus Uteri and Uterus, NOS)	1,746	9.1	<b>32.4</b>	30.9 - 34.0	1,380	5.8	<b>105.3</b>	99.8 - 111.0
Lymphoma	763	4.0	<b>14.2</b>	13.2 - 15.2	1,114	4.7	<b>85.0</b>	80.1 - 90.1
Urinary Bladder	345	1.8	<b>6.4</b>	5.7 - 7.1	880	3.7	<b>67.1</b>	62.8 - 71.7
Pancreas	345	1.8	<b>6.4</b>	5.7 - 7.1	856	3.6	<b>65.3</b>	61.0 - 69.8
Melanoma of the Skin	1,139	5.9	<b>21.2</b>	19.9 - 22.4	842	3.5	<b>64.2</b>	60.0 - 68.7
Leukemia	444	2.3	<b>8.2</b>	7.5 - 9.0	656	2.7	<b>50.0</b>	46.3 - 54.0
Kidney and Renal Pelvis	518	2.7	<b>9.6</b>	8.8 - 10.5	568	2.4	<b>43.3</b>	39.8 - 47.0
Oral Cavity and Pharynx	313	1.6	<b>5.8</b>	5.2 - 6.5	361	1.5	<b>27.5</b>	24.8 - 30.5

Data Source: Maine CDC Cancer Registry, based on November 2020 NPCR-CSS data submission.

N: Number of new cancer cases (total across all years). Crude rates are new cancer cases per 100,000 population.

95% CI: 95% Confidence Interval of the Crude Rate.

Cancer sites listed are those most common among Mainers age 65 and older by sex.

Site-specific counts will not sum to Maine total as not all cancer sites are listed.

**Table 4. Site-specific New Cancer Cases among those 65 years and older, by sex and age group, Maine, 2009-2018**

Site	65-74 Years				75-84 Years				85 Years and Older			
	N	% of Total	Crude Rate	95% CI	N	% of Total	Crude Rate	95% CI	N	% of Total	Crude Rate	95% CI
<b>Males</b>												
Total (All Cancer Sites)	14,156	100.0	<b>2,183.2</b>	2,147.4 - 2,219.4	9,385	100.0	<b>2,998.7</b>	2,938.3 - 3,060.0	3,242	100.0	<b>3,073.8</b>	2,968.9 - 3,181.5
Prostate	3,827	27.0	<b>590.2</b>	571.7 - 609.2	1,551	16.5	<b>495.6</b>	471.2 - 520.9	381	11.8	<b>361.2</b>	325.9 - 399.4
Lung and Bronchus	2,424	17.1	<b>373.8</b>	359.1 - 389.0	1,806	19.2	<b>577.0</b>	550.7 - 604.3	535	16.5	<b>507.2</b>	465.2 - 552.1
Urinary Bladder	1,270	9.0	<b>195.9</b>	185.2 - 206.9	1,133	12.1	<b>362.0</b>	341.2 - 383.7	438	13.5	<b>415.3</b>	377.3 - 456.1
Colon and Rectum	923	6.5	<b>142.3</b>	133.3 - 151.8	723	7.7	<b>231.0</b>	214.5 - 248.5	342	10.5	<b>324.3</b>	290.8 - 360.5
Melanoma of the Skin	678	4.8	<b>104.6</b>	96.8 - 112.7	513	5.5	<b>163.9</b>	150.0 - 178.7	187	5.8	<b>177.3</b>	152.8 - 204.6
Lymphoma	607	4.3	<b>93.6</b>	86.3 - 101.4	511	5.4	<b>163.3</b>	149.4 - 178.1	156	4.8	<b>147.9</b>	125.6 - 173.0
Kidney and Renal Pelvis	587	4.1	<b>90.5</b>	83.4 - 98.2	292	3.1	<b>93.3</b>	82.9 - 104.6	99	3.1	<b>93.9</b>	76.3 - 114.3
Leukemia	441	3.1	<b>68.0</b>	61.8 - 74.7	351	3.7	<b>112.2</b>	100.7 - 124.5	148	4.6	<b>140.3</b>	118.6 - 164.8
Pancreas	406	2.9	<b>62.6</b>	56.7 - 69.0	301	3.2	<b>96.2</b>	85.6 - 107.7	101	3.1	<b>95.8</b>	78.0 - 116.4
Oral Cavity and Pharynx	449	3.2	<b>69.2</b>	63.0 - 76.0	221	2.4	<b>70.6</b>	61.6 - 80.6	84	2.6	<b>79.6</b>	63.5 - 98.6
<b>Females</b>												
Total (All Cancer Sites)	11,474	100.0	<b>1,638.1</b>	1,608.3 - 1,668.4	8,486	100.0	<b>2,109.1</b>	2,064.4 - 2,154.4	3,950	100.0	<b>1,899.8</b>	1,841.0 - 1,960.0
Breast	3,186	27.8	<b>454.9</b>	439.2 - 470.9	1,799	21.2	<b>447.1</b>	426.7 - 468.3	659	16.7	<b>317.0</b>	293.2 - 342.1
Lung and Bronchus	2,240	19.5	<b>319.8</b>	306.7 - 333.3	1,797	21.2	<b>446.6</b>	426.2 - 467.8	560	14.2	<b>269.3</b>	247.5 - 292.6
Colon and Rectum	784	6.8	<b>111.9</b>	104.2 - 120.0	844	9.9	<b>209.8</b>	195.8 - 224.4	576	14.6	<b>277.0</b>	254.9 - 300.6
Uterus (Corpus Uteri and Uterus, NOS)	911	7.9	<b>130.1</b>	121.8 - 138.8	359	4.2	<b>89.2</b>	80.2 - 98.9	110	2.8	<b>52.9</b>	43.5 - 63.8
Lymphoma	505	4.4	<b>72.1</b>	65.9 - 78.7	396	4.7	<b>98.4</b>	89.0 - 108.6	213	5.4	<b>102.4</b>	89.1 - 117.2
Urinary Bladder	334	2.9	<b>47.7</b>	42.7 - 53.1	359	4.2	<b>89.2</b>	80.2 - 98.9	187	4.7	<b>89.9</b>	77.5 - 103.8
Pancreas	353	3.1	<b>50.4</b>	45.3 - 55.9	298	3.5	<b>74.1</b>	65.9 - 83.0	205	5.2	<b>98.6</b>	85.6 - 113.1
Melanoma of the Skin	376	3.3	<b>53.7</b>	48.4 - 59.4	307	3.6	<b>76.3</b>	68.0 - 85.3	159	4.0	<b>76.5</b>	65.0 - 89.3
Leukemia	274	2.4	<b>39.1</b>	34.6 - 44.0	242	2.9	<b>60.1</b>	52.8 - 68.2	140	3.5	<b>67.3</b>	56.6 - 79.5
Kidney and Renal Pelvis	282	2.5	<b>40.3</b>	35.7 - 45.2	196	2.3	<b>48.7</b>	42.1 - 56.0	90	2.3	<b>43.3</b>	34.8 - 53.2
Oral Cavity and Pharynx	158	1.4	<b>22.6</b>	19.2 - 26.4	126	1.5	<b>31.3</b>	26.1 - 37.3	77	1.9	<b>37.0</b>	29.2 - 46.3

Data Source: Maine CDC Cancer Registry, based on November 2020 NPCR-CSS data submission.

N: Number of new cancer cases (total across all years). Crude rates are new cancer cases per 100,000 population.

95% CI: 95% Confidence Interval of the Crude Rate.

Cancer sites listed are those most common among Mainers age 65 and older by sex.

Site-specific counts will not sum to Maine total as not all cancer sites are listed.

**Table 5. Site-specific Cancer Deaths among those under 65 years and 65 years and older by sex, Maine, 2009-2018**

Site	Under 65 Years				65 Years and Older			
	N	% of Total	Crude Rate	95% CI	N	% of Total	Crude Rate	95% CI
<b>Males</b>								
Total (All Cancer Sites)	4,837	100.0	<b>88.9</b>	86.3 - 91.4	12,424	100.0	<b>1,158.3</b>	1,137.9 - 1,178.6
Lung and Bronchus	1,501	31.0	<b>27.6</b>	26.2 - 29.0	3,600	29.0	<b>335.6</b>	324.7 - 346.6
Prostate	145	3.0	<b>2.7</b>	2.2 - 3.1	1,384	11.1	<b>129.0</b>	122.2 - 135.8
Colon and Rectum	397	8.2	<b>7.3</b>	6.6 - 8.0	898	7.2	<b>83.7</b>	78.2 - 89.2
Pancreas	308	6.4	<b>5.7</b>	5.0 - 6.3	710	5.7	<b>66.2</b>	61.3 - 71.1
Urinary Bladder	118	2.4	<b>2.2</b>	1.8 - 2.6	651	5.2	<b>60.7</b>	56.0 - 65.4
Esophagus	306	6.3	<b>5.6</b>	5.0 - 6.3	544	4.4	<b>50.7</b>	46.5 - 55.0
Leukemia	154	3.2	<b>2.8</b>	2.4 - 3.3	541	4.4	<b>50.4</b>	46.2 - 54.7
Non-Hodgkin Lymphoma	127	2.6	<b>2.3</b>	1.9 - 2.7	487	3.9	<b>45.4</b>	41.4 - 49.4
Liver and Intrahepatic Bile Ducts	268	5.5	<b>4.9</b>	4.3 - 5.5	402	3.2	<b>37.5</b>	33.8 - 41.1
Kidney and Renal Pelvis	152	3.1	<b>2.8</b>	2.3 - 3.2	361	2.9	<b>33.7</b>	30.2 - 37.1
Ill-defined, Secondary, and Unspecified Sites	307	6.3	<b>5.6</b>	5.0 - 6.3	900	7.2	<b>83.9</b>	78.4 - 89.4
<b>Females</b>								
Total (All Cancer Sites)	4,095	100.0	<b>74.8</b>	72.5 - 77.1	11,226	100.0	<b>851.9</b>	836.2 - 867.7
Lung and Bronchus	1,170	28.6	<b>21.4</b>	20.1 - 22.6	3,157	28.1	<b>239.9</b>	231.2 - 247.9
Breast	669	16.3	<b>12.2</b>	11.3 - 13.1	1,182	10.5	<b>89.7</b>	84.6 - 94.8
Colon and Rectum	290	7.1	<b>5.3</b>	4.7 - 5.9	1,002	8.9	<b>76.0</b>	71.3 - 80.7
Pancreas	255	6.2	<b>4.7</b>	4.1 - 5.2	844	7.5	<b>64.0</b>	59.7 - 68.4
Ovary	240	5.9	<b>4.4</b>	3.8 - 4.9	452	4.0	<b>34.3</b>	31.1 - 37.5
Non-Hodgkin Lymphoma	82	2.0	<b>1.5</b>	1.2 - 1.9	433	3.9	<b>32.9</b>	29.8 - 36.0
Leukemia	99	2.4	<b>1.8</b>	1.5 - 2.2	404	3.6	<b>30.7</b>	27.7 - 33.6
Uterus (Corpus Uteri and Uterus, NOS)	147	3.6	<b>2.7</b>	2.3 - 3.1	345	3.1	<b>26.2</b>	23.4 - 28.9
Urinary Bladder	33	0.8	<b>0.6</b>	0.4 - 0.8	253	2.3	<b>19.2</b>	16.8 - 21.6
Myeloma	42	1.0	<b>0.8</b>	0.6 - 1.0	257	2.3	<b>19.5</b>	17.1 - 21.9
Liver and Intrahepatic Bile Ducts	82	2.0	<b>1.5</b>	1.2 - 1.9	240	2.1	<b>18.2</b>	15.9 - 20.5
Kidney and Renal Pelvis	61	1.5	<b>1.1</b>	0.9 - 1.4	213	1.9	<b>16.2</b>	14.0 - 18.3
Esophagus	48	1.2	<b>0.9</b>	0.6 - 1.2	162	1.4	<b>12.3</b>	10.4 - 14.2
Ill-defined, Secondary, and Unspecified Sites	256	6.3	<b>4.7</b>	4.1 - 5.2	959	8.5	<b>72.8</b>	68.2 - 77.4

Data Source: Centers for Disease Control and Prevention, National Center for Health Statistics. Underlying Cause of Death 1999-2019 on CDC WONDER Online Database, released in 2020.

N: Number of deaths (total across all years). Crude rates are cancer deaths per 100,000 population. 95% CI: 95% Confidence Interval of the crude rate.

Site-specific counts will not sum to Maine total as not all cancer sites are listed.

**Table 6. Site-Specific Cancer Deaths among those age 65 and older, by sex and age group, Maine, 2009-2018**

Site	65-74 Years				75-84 Years				85 Years and Older			
	N	% of Total	Crude Rate	95% CI	N	% of Total	Crude Rate	95% CI	N	% of Total	Crude Rate	95% CI
<b>Males</b>												
Total (All Cancer Sites)	4,846	100.0	<b>741.8</b>	720.9 - 762.7	4,873	100.0	<b>1,548.9</b>	1,505.4 - 1,592.4	2,705	100.0	<b>2,581.8</b>	2,484.5 - 2,679.1
Lung and Bronchus	1,620	33.4	<b>248.0</b>	235.9 - 260.1	1,438	29.5	<b>457.1</b>	433.5 - 480.7	542	20.0	<b>517.3</b>	473.8 - 560.9
Prostate	306	6.3	<b>46.8</b>	41.6 - 52.1	537	11.0	<b>170.7</b>	156.3 - 185.1	541	20.0	<b>516.4</b>	472.9 - 559.9
Colon and Rectum	328	6.8	<b>50.2</b>	44.8 - 55.6	336	6.9	<b>106.8</b>	95.4 - 118.2	234	8.7	<b>223.3</b>	194.7 - 252.0
Pancreas	311	6.4	<b>47.6</b>	42.3 - 52.9	279	5.7	<b>88.7</b>	78.3 - 99.1	120	4.4	<b>114.5</b>	94.0 - 135.0
Urinary Bladder	181	3.7	<b>27.7</b>	23.7 - 31.7	269	5.5	<b>85.5</b>	75.3 - 95.7	201	7.4	<b>191.8</b>	165.3 - 218.4
Esophagus	278	5.7	<b>42.6</b>	37.6 - 47.6	197	4.0	<b>62.6</b>	53.9 - 71.4	69	2.6	<b>65.9</b>	51.2 - 83.3
Leukemia	194	4.0	<b>29.7</b>	25.5 - 33.9	239	4.9	<b>76.0</b>	66.3 - 85.6	108	4.0	<b>103.1</b>	83.6 - 122.5
Non-Hodgkin Lymphoma	157	3.2	<b>24.0</b>	20.3 - 27.8	199	4.1	<b>63.3</b>	54.5 - 72.0	131	4.8	<b>125.0</b>	103.6 - 146.4
Liver and Intrahepatic Bile Ducts	189	3.9	<b>28.9</b>	24.8 - 33.1	157	3.2	<b>49.9</b>	42.1 - 57.7	56	2.1	<b>53.5</b>	40.4 - 69.4
Kidney and Renal Pelvis	153	3.2	<b>23.4</b>	19.7 - 27.1	129	2.6	<b>41.0</b>	33.9 - 48.1	79	2.9	<b>75.4</b>	59.7 - 94.0
Myeloma	92	1.9	<b>14.1</b>	11.4 - 17.3	100	2.1	<b>31.8</b>	25.6 - 38.0	58	2.1	<b>55.4</b>	42.0 - 71.6
Ill-defined, Secondary, and Unspecified	320	6.6	<b>49.0</b>	43.6 - 54.4	363	7.4	<b>115.4</b>	103.5 - 127.3	217	8.0	<b>207.1</b>	179.6 - 234.7

Data Source: Centers for Disease Control and Prevention, National Center for Health Statistics. Underlying Cause of Death 1999-2019 on CDC WONDER Online Database, released in 2020.

N: Number of deaths (total across all years). Crude rates are cancer deaths per 100,000 population. 95% CI: 95% Confidence Interval of the crude rate.

Site-specific counts will not sum to Maine total as not all cancer sites are listed.



**Table 6 (continued). Site-Specific Cancer Deaths among those age 65 and older, by sex and age group, Maine, 2009-2018**

Site	65-74 Years				75-84 Years				85 Years and Older			
	N	% of Total	Crude Rate	95% CI	N	% of Total	Crude Rate	95% CI	N	% of Total	Crude Rate	95% CI
<b>Females</b>												
Total (All Cancer Sites)	3,942	100.0	<b>558.2</b>	540.8 - 575.6	4,190	100.0	<b>1,034.2</b>	1,002.9 - 1,065.5	3,094	100.0	<b>1,499.1</b>	1,446.3 - 1,552.0
Lung and Bronchus	1,314	33.3	<b>186.1</b>	176.0 - 196.1	1,253	29.9	<b>309.3</b>	292.9 - 326.4	590	19.1	<b>285.9</b>	262.8 - 308.9
Breast	422	10.7	<b>59.8</b>	54.1 - 65.5	391	9.3	<b>96.5</b>	86.9 - 106.1	369	11.9	<b>178.8</b>	160.6 - 197.0
Colon and Rectum	272	6.9	<b>38.5</b>	33.9 - 43.1	351	8.4	<b>86.6</b>	77.6 - 95.7	379	12.2	<b>183.6</b>	165.1 - 202.1
Pancreas	310	7.9	<b>43.9</b>	39.0 - 48.8	297	7.1	<b>73.3</b>	65.0 - 81.6	237	7.7	<b>114.8</b>	100.2 - 129.5
Ovary	181	4.6	<b>25.6</b>	21.9 - 29.4	179	4.3	<b>44.2</b>	37.7 - 50.7	92	3.0	<b>44.6</b>	35.9 - 54.7
Non-Hodgkin Lymphoma	111	2.8	<b>15.7</b>	12.8 - 18.6	160	3.8	<b>39.5</b>	33.4 - 45.6	162	5.2	<b>78.5</b>	66.4 - 90.6
Leukemia	107	2.7	<b>15.2</b>	12.3 - 18.0	153	3.7	<b>37.8</b>	31.8 - 43.7	144	4.7	<b>69.8</b>	58.4 - 81.2
Uterus (Corpus Uteri and Uterus, NOS)	142	3.6	<b>20.1</b>	16.8 - 23.4	119	2.8	<b>29.4</b>	24.1 - 34.7	84	2.7	<b>40.7</b>	32.5 - 50.4
Urinary Bladder	49	1.2	<b>6.9</b>	5.1 - 9.2	100	2.4	<b>24.7</b>	19.8 - 29.5	104	3.4	<b>50.4</b>	40.7 - 60.1
Myeloma	81	2.1	<b>11.5</b>	9.1 - 14.3	95	2.3	<b>23.4</b>	19.0 - 28.7	81	2.6	<b>39.2</b>	31.2 - 48.8
Liver and Intrahepatic Bile Ducts	95	2.4	<b>13.5</b>	10.9 - 16.4	94	2.2	<b>23.2</b>	18.7 - 28.4	51	1.6	<b>24.7</b>	18.4 - 32.5
Kidney and Renal Pelvis	67	1.7	<b>9.5</b>	7.4 - 12.0	90	2.1	<b>22.2</b>	17.9 - 27.3	56	1.8	<b>27.1</b>	20.5 - 35.2
Esophagus	64	1.6	<b>9.0</b>	7.0 - 11.6	53	1.3	<b>13.1</b>	9.8 - 17.1	45	1.5	<b>21.8</b>	15.9 - 29.2
Ill-defined, Secondary, and Unspecified	262	6.6	<b>37.1</b>	32.6 - 41.6	384	9.2	<b>94.8</b>	85.3 - 104.3	313	10.1	<b>151.7</b>	134.9 - 168.5

Data Source: Centers for Disease Control and Prevention, National Center for Health Statistics. Underlying Cause of Death 1999-2019 on CDC WONDER Online Database, released in 2020.

N: Number of deaths (total across all years). Crude rates are cancer deaths per 100,000 population. 95% CI: 95% Confidence Interval of the crude rate. Site-specific counts will not sum to Maine total as not all cancer sites are listed.

**Table 7. Trends over time in New Cancer Cases by sex and age group, Maine, 1999-2018**

Year	All Sexes					
	Under 65 Years			65 Years and Older		
	N	Rate	95% CI	N	Rate	95% CI
1999	2,700	<b>251.0</b>	241.6 - 261.0	4,485	<b>2,468.6</b>	2,396.9 - 2,541.9
2000	3,014	<b>278.2</b>	268.4 - 288.3	4,605	<b>2,506.6</b>	2,434.7 - 2,580.1
2001	3,155	<b>289.4</b>	279.4 - 299.7	4,699	<b>2,537.7</b>	2,465.7 - 2,611.3
2002	3,233	<b>294.4</b>	284.3 - 304.7	4,678	<b>2,506.1</b>	2,434.7 - 2,578.9
2003	3,256	<b>294.2</b>	284.2 - 304.5	4,679	<b>2,485.7</b>	2,414.9 - 2,557.9
2004	3,595	<b>323.4</b>	312.9 - 334.0	4,745	<b>2,499.9</b>	2,429.3 - 2,572.1
2005	3,475	<b>311.7</b>	301.4 - 322.2	4,815	<b>2,515.9</b>	2,445.4 - 2,588.0
2006	3,698	<b>331.3</b>	320.7 - 342.2	4,914	<b>2,527.2</b>	2,457.0 - 2,598.8
2007	3,680	<b>329.8</b>	319.2 - 340.6	4,866	<b>2,457.5</b>	2,389.0 - 2,527.6
2008	3,718	<b>333.9</b>	323.3 - 344.8	4,772	<b>2,346.8</b>	2,280.7 - 2,414.4
2009	3,657	<b>330.1</b>	319.5 - 341.0	4,718	<b>2,271.9</b>	2,207.5 - 2,337.6
2010	3,664	<b>332.7</b>	322.0 - 343.7	4,748	<b>2,240.0</b>	2,176.7 - 2,304.6
2011	3,623	<b>330.1</b>	319.5 - 341.1	4,774	<b>2,210.4</b>	2,148.1 - 2,274.0
2012	3,700	<b>340.5</b>	329.6 - 351.6	4,867	<b>2,153.5</b>	2,093.4 - 2,214.8
2013	3,613	<b>335.2</b>	324.3 - 346.3	4,868	<b>2,074.0</b>	2,016.2 - 2,133.1
2014	3,720	<b>347.2</b>	336.1 - 358.6	5,106	<b>2,099.6</b>	2,042.4 - 2,158.0
2015	3,647	<b>343.3</b>	332.3 - 354.7	5,189	<b>2,074.7</b>	2,018.7 - 2,132.0
2016	3,675	<b>347.9</b>	336.7 - 359.3	5,343	<b>2,068.5</b>	2,013.1 - 2,124.7
2017	3,674	<b>349.5</b>	338.3 - 361.0	5,501	<b>2,062.8</b>	2,008.6 - 2,118.0
2018	3,555	<b>339.9</b>	328.8 - 351.2	5,579	<b>2,021.1</b>	1,968.4 - 2,074.8

Data Source: Maine CDC Cancer Registry, based on November 2020 NPCR-CSS data submission. N: Number of new cancer cases diagnosed that year. Rates are new cancer cases per 100,000 population (crude rates). 95% CI: 95% Confidence Interval of the rate.

Year	All Sexes								
	65-74 Years			75-84 Years			85 Years and Older		
	N	Rate	95% CI	N	Rate	95% CI	N	Rate	95% CI
1999	2,213	<b>2,312.1</b>	2,216.7 - 2,411.0	1,690	<b>2,693.0</b>	2,566.1 - 2,824.5	582	<b>2,544.5</b>	2,341.9 - 2,759.9
2000	2,186	<b>2,283.2</b>	2,188.5 - 2,381.0	1,789	<b>2,791.2</b>	2,663.3 - 2,923.6	630	<b>2,688.9</b>	2,483.0 - 2,907.3
2001	2,232	<b>2,328.1</b>	2,232.5 - 2,426.7	1,841	<b>2,833.0</b>	2,705.0 - 2,965.0	626	<b>2,628.2</b>	2,426.3 - 2,842.0
2002	2,200	<b>2,292.4</b>	2,197.6 - 2,390.2	1,875	<b>2,840.7</b>	2,713.5 - 2,972.2	603	<b>2,496.4</b>	2,301.1 - 2,703.8
2003	2,128	<b>2,211.0</b>	2,118.0 - 2,307.0	1,930	<b>2,883.8</b>	2,756.5 - 3,015.4	621	<b>2,534.2</b>	2,338.8 - 2,741.6
2004	2,153	<b>2,225.9</b>	2,132.9 - 2,322.0	1,959	<b>2,899.6</b>	2,772.6 - 3,030.9	633	<b>2,543.1</b>	2,438.8 - 2,749.1
2005	2,268	<b>2,328.4</b>	2,233.5 - 2,426.2	1,848	<b>2,719.9</b>	2,597.3 - 2,846.8	699	<b>2,757.3</b>	2,556.6 - 2,969.5
2006	2,220	<b>2,245.2</b>	2,152.8 - 2,340.6	2,008	<b>2,927.4</b>	2,800.8 - 3,058.0	686	<b>2,611.5</b>	2,419.7 - 2,815.0
2007	2,164	<b>2,140.4</b>	2,051.1 - 2,232.5	1,980	<b>2,862.1</b>	2,737.4 - 2,991.0	722	<b>2,677.4</b>	2,485.7 - 2,880.1
2008	2,282	<b>2,163.1</b>	2,075.2 - 2,253.7	1,813	<b>2,619.2</b>	2,500.0 - 2,742.6	677	<b>2,429.7</b>	2,250.1 - 2,619.8
2009	2,183	<b>1,993.7</b>	1,910.9 - 2,079.1	1,791	<b>2,596.4</b>	2,477.6 - 2,719.5	744	<b>2,623.4</b>	2,438.3 - 2,818.9
2010	2,276	<b>2,019.3</b>	1,937.2 - 2,104.0	1,798	<b>2,603.2</b>	2,484.2 - 2,726.3	674	<b>2,300.9</b>	2,130.4 - 2,481.3
2011	2,310	<b>1,995.4</b>	1,914.8 - 2,078.4	1,773	<b>2,559.1</b>	2,441.4 - 2,681.1	691	<b>2,307.6</b>	2,138.8 - 2,486.3
2012	2,386	<b>1,915.5</b>	1,839.4 - 1,993.9	1,743	<b>2,506.1</b>	2,389.8 - 2,626.6	738	<b>2,396.1</b>	2,226.3 - 2,575.4
2013	2,452	<b>1,858.8</b>	1,786.0 - 1,933.9	1,719	<b>2,451.6</b>	2,337.0 - 2,570.3	697	<b>2,213.5</b>	2,052.2 - 2,348.2
2014	2,612	<b>1,880.1</b>	1,808.7 - 1,953.6	1,758	<b>2,480.7</b>	2,366.1 - 2,599.4	736	<b>2,297.2</b>	2,134.2 - 2,469.3
2015	2,699	<b>1,860.3</b>	1,790.8 - 1,931.8	1,738	<b>2,435.7</b>	2,322.6 - 2,553.0	752	<b>2,337.9</b>	2,173.7 - 2,511.1
2016	2,766	<b>1,829.3</b>	1,761.8 - 1,898.8	1,858	<b>2,554.9</b>	2,440.1 - 2,673.8	719	<b>2,194.5</b>	2,037.0 - 2,361.0
2017	2,963	<b>1,885.5</b>	1,818.3 - 1,954.7	1,810	<b>2,421.0</b>	2,310.8 - 2,535.2	728	<b>2,203.3</b>	2,046.2 - 2,369.4
2018	2,983	<b>1,840.8</b>	1,775.3 - 1,908.1	1,883	<b>2,394.9</b>	2,288.0 - 2,505.6	713	<b>2,128.9</b>	1,975.5 - 2,291.0

**Table 7 (continued). Trends over time in New Cancer Cases by sex and age group, Maine, 1999-2018**

Year	Males					
	Under 65 Years			65 Years and older		
	N	Rate	95% CI	N	Rate	95% CI
1999	1,286	<b>239.4</b>	226.5 - 253.0	2,468	<b>3,294.9</b>	3,166.2 - 3,427.5
2000	1,437	<b>265.7</b>	252.1 - 279.8	2,486	<b>3,262.4</b>	3,135.4 - 3,393.2
2001	1,530	<b>281.2</b>	267.3 - 295.7	2,602	<b>3,367.5</b>	3,239.3 - 3,499.4
2002	1,555	<b>283.5</b>	269.6 - 298.0	2,579	<b>3,291.9</b>	3,166.1 - 3,421.5
2003	1,598	<b>288.8</b>	274.9 - 303.4	2,577	<b>3,244.6</b>	3,120.5 - 3,372.4
2004	1,820	<b>327.4</b>	312.5 - 343.0	2,586	<b>3,211.9</b>	3,089.3 - 3,338.2
2005	1,684	<b>302.0</b>	287.8 - 316.8	2,572	<b>3,155.4</b>	3,034.6 - 3,279.8
2006	1,840	<b>329.5</b>	314.6 - 344.9	2,656	<b>3,190.4</b>	3,070.2 - 3,314.1
2007	1,845	<b>330.6</b>	315.7 - 346.0	2,655	<b>3,114.9</b>	2,997.5 - 3,235.7
2008	1,822	<b>327.2</b>	312.3 - 342.5	2,568	<b>2,917.0</b>	2,805.3 - 3,032.1
2009	1,787	<b>322.5</b>	307.7 - 337.8	2,501	<b>2,763.2</b>	2,655.9 - 2,873.6
2010	1,807	<b>328.4</b>	313.4 - 313.9	2,541	<b>2,732.6</b>	2,627.3 - 2,840.9
2011	1,727	<b>315.0</b>	300.3 - 330.2	2,565	<b>2,686.2</b>	2,583.2 - 2,792.2
2012	1,781	<b>328.2</b>	313.2 - 343.8	2,532	<b>2,512.0</b>	2,415.1 - 2,611.7
2013	1,716	<b>318.7</b>	303.8 - 334.2	2,491	<b>2,362.6</b>	2,270.7 - 2,457.2
2014	1,709	<b>319.5</b>	304.6 - 335.1	2,623	<b>2,392.6</b>	2,301.9 - 2,485.9
2015	1,668	<b>314.7</b>	299.8 - 330.2	2,729	<b>2,409.9</b>	2,320.3 - 2,502.0
2016	1,741	<b>330.2</b>	314.8 - 346.0	2,834	<b>2,420.1</b>	2,331.8 - 2,510.8
2017	1,685	<b>321.0</b>	305.9 - 336.7	2,949	<b>2,433.5</b>	2,346.4 - 2,522.9
2018	1,680	<b>321.6</b>	306.4 - 337.4	3,018	<b>2,403.4</b>	2,318.4 - 2,490.8

Data Source: Maine CDC Cancer Registry, based on November 2020 NPCR-CSS data submission. N: Number of new cancer cases diagnosed that year. Rates are new cancer cases per 100,000 population (crude rates). 95% CI: 95% Confidence Interval of the rate.

Year	Males								
	65-74 Years			75-84 Years			85 Years and Older		
	N	Rate	95% CI	N	Rate	95% CI	N	Rate	95% CI
1999	1,309	<b>2,994.3</b>	2,834.3 - 3,161.0	916	<b>3,685.7</b>	3,450.8 - 3,932.0	243	<b>3,903.6</b>	3,428.2 - 4,426.5
2000	1,313	<b>2,983.3</b>	2,824.1 - 3,149.2	942	<b>3,687.3</b>	3,455.6 - 3,930.5	231	<b>3,562.6</b>	3,118.0 - 4,052.9
2001	1,342	<b>3,025.0</b>	2,865.3 - 3,191.3	986	<b>3,788.5</b>	3,555.7 - 4,033.0	274	<b>4,091.4</b>	3,621.2 - 4,605.6
2002	1,318	<b>2,949.1</b>	2,792.1 - 3,112.8	999	<b>3,770.5</b>	3,540.3 - 4,011.8	262	<b>3,769.2</b>	3,326.6 - 4,254.4
2003	1,281	<b>2,849.7</b>	2,695.8 - 3,010.1	1,035	<b>3,816.8</b>	3,587.8 - 4,056.6	261	<b>3,651.9</b>	3,222.2 - 4,122.9
2004	1,304	<b>2,875.1</b>	2,721.1 - 3,035.5	1,047	<b>3,804.2</b>	3,577.3 - 4,042.0	235	<b>3,176.5</b>	2,783.4 - 3,609.7
2005	1,304	<b>2,849.0</b>	2,696.4 - 3,007.9	973	<b>3,493.7</b>	3,277.6 - 3,720.3	295	<b>3,867.8</b>	3,439.0 - 4,335.4
2006	1,308	<b>2,799.8</b>	2,265.1 - 2,955.7	1,040	<b>3,681.0</b>	3,460.7 - 3,912.0	308	<b>3,849.5</b>	3,431.6 - 4,304.3
2007	1,272	<b>2,651.2</b>	2,507.5 - 2,801.0	1,073	<b>3,739.8</b>	3,519.4 - 3,970.5	310	<b>3,747.1</b>	3,341.6 - 4,188.3
2008	1,337	<b>2,672.0</b>	2,530.7 - 2,189.2	940	<b>3,243.4</b>	3,039.3 - 3,457.5	291	<b>3,333.3</b>	2,961.3 - 3,739.2
2009	1,236	<b>2,371.8</b>	2,241.4 - 2,507.8	968	<b>3,329.0</b>	3,122.5 - 3,545.5	297	<b>3,299.3</b>	2,934.7 - 3,696.6
2010	1,275	<b>2,370.4</b>	2,242.1 - 2,504.2	953	<b>3,235.0</b>	3,032.8 - 3,447.1	313	<b>3,331.6</b>	2,972.7 - 3,721.9
2011	1,318	<b>2,378.2</b>	2,251.6 - 2,510.2	949	<b>3,175.9</b>	2,977.1 - 3,384.6	298	<b>3,040.8</b>	2,705.3 - 3,406.4
2012	1,306	<b>2,179.6</b>	2,063.0 - 2,301.1	895	<b>2,960.1</b>	2,769.4 - 3,160.6	331	<b>3,239.7</b>	2,900.0 - 3,608.2
2013	1,310	<b>2,057.8</b>	1,947.9 - 2,172.3	896	<b>2,917.0</b>	2,729.1 - 3,114.5	285	<b>2,691.2</b>	2,387.8 - 3,022.5
2014	1,405	<b>2,094.0</b>	1,985.9 - 2,206.4	862	<b>2,767.1</b>	2,585.4 - 2,958.1	356	<b>3,281.1</b>	2,949.1 - 3,640.3
2015	1,428	<b>2,037.1</b>	1,932.8 - 2,145.6	934	<b>2,956.8</b>	2,770.2 - 3,152.7	367	<b>3,345.2</b>	3,011.7 - 3,705.6
2016	1,528	<b>2,095.5</b>	1,991.7 - 2,203.3	982	<b>3,040.2</b>	2,853.0 - 3,236.5	324	<b>2,877.7</b>	2,572.8 - 3,208.7
2017	1,641	<b>2,170.9</b>	2,067.1 - 2,278.6	962	<b>2,882.6</b>	2,703.3 - 3,070.6	346	<b>2,996.4</b>	2,689.0 - 3,329.4
2018	1,709	<b>2,196.4</b>	2,093.5 - 2,303.1	984	<b>2,796.2</b>	2,624.2 - 2,976.5	325	<b>2,744.9</b>	2,454.6 - 3,060.2

**Table 7 (continued). Trends over time in New Cancer Cases by sex and age group, Maine, 1999-2018**

Year	Females					
	Under 65 Years			65 Years and Older		
	N	Rate	95% CI	N	Rate	95% CI
1999	1,414	<b>262.5</b>	249.0 - 277.0	2,017	<b>1,889.0</b>	1,807.4 - 1,973.2
2000	1,577	<b>290.7</b>	267.5 - 305.4	2,119	<b>1,970.9</b>	1,887.9 - 2,056.7
2001	1,625	<b>297.6</b>	283.3 - 312.4	2,097	<b>1,943.5</b>	1,861.2 - 2,028.5
2002	1,678	<b>305.2</b>	290.8 - 320.0	2,099	<b>1,937.7</b>	1,855.7 - 2,022.4
2003	1,658	<b>299.6</b>	285.3 - 314.3	2,102	<b>1,931.7</b>	1,850.0 - 2,016.1
2004	1,775	<b>319.3</b>	304.6 - 335.0	2,159	<b>1,975.4</b>	1,893.0 - 2,060.5
2005	1,791	<b>321.4</b>	306.7 - 336.6	2,243	<b>2,041.5</b>	1,957.9 - 2,127.8
2006	1,858	<b>333.1</b>	318.2 - 348.6	2,258	<b>2,030.6</b>	1,947.7 - 2,116.2
2007	1,835	<b>329.0</b>	314.1 - 344.0	2,211	<b>1,960.7</b>	1,879.8 - 2,044.1
2008	1,896	<b>340.7</b>	325.6 - 356.4	2,204	<b>1,911.5</b>	1,832.5 - 1,993.0
2009	1,870	<b>337.7</b>	322.6 - 353.3	2,217	<b>1,892.3</b>	1,814.4 - 1,972.8
2010	1,857	<b>337.0</b>	321.9 - 352.7	2,207	<b>1,855.0</b>	1,778.4 - 1,934.1
2011	1,896	<b>345.3</b>	329.9 - 361.2	2,209	<b>1,833.3</b>	1,757.6 - 1,911.4
2012	1,919	<b>352.7</b>	337.1 - 368.8	2,335	<b>1,864.9</b>	1,790.0 - 1,942.1
2013	1,897	<b>351.6</b>	336.0 - 367.8	2,377	<b>1,838.7</b>	1,765.5 - 1,914.2
2014	2,011	<b>374.8</b>	358.6 - 391.5	2,483	<b>1,859.1</b>	1,786.7 - 1,933.7
2015	1,979	<b>371.8</b>	355.6 - 388.5	2,460	<b>1,797.4</b>	1,727.1 - 1,869.9
2016	1,934	<b>365.5</b>	349.4 - 394.9	2,509	<b>1,777.0</b>	1,708.1 - 1,847.9
2017	1,989	<b>378.0</b>	361.5 - 394.9	2,552	<b>1,754.0</b>	1,686.6 - 1,823.4
2018	1,875	<b>358.1</b>	342.1 - 374.7	2,561	<b>1,702.0</b>	1,636.7 - 1,769.3

Data Source: Maine CDC Cancer Registry, based on November 2020 NPCR-CSS data submission. N: Number of new cancer cases diagnosed that year. Rates are new cancer cases per 100,000 population (crude rates). 95% CI: 95% Confidence Interval of the rate.

Year	Females								
	65-74 Years			75-84 Years			85 Years and Older		
	N	Rate	95% CI	N	Rate	95% CI	N	Rate	95% CI
1999	904	<b>1,738.5</b>	1,627.0 - 1,855.6	774	<b>2,042.1</b>	1,900.7 - 2,191.0	339	<b>2,036.3</b>	1,825.3 - 2,265.0
2000	873	<b>1,687.6</b>	1,577.5 - 1,803.4	847	<b>2,197.3</b>	2,051.8 - 2,350.4	399	<b>2,354.5</b>	2,129.1 - 2,597.3
2001	890	<b>1,727.8</b>	1,616.1 - 1,845.1	855	<b>2,194.6</b>	2,050.0 - 2,347.0	352	<b>2,055.8</b>	1,846.7 - 2,282.2
2002	882	<b>1,720.0</b>	1,608.4 - 1,837.4	876	<b>2,217.1</b>	2,072.7 - 2,368.9	341	<b>1,982.1</b>	1,777.3 - 2,204.0
2003	847	<b>1,651.2</b>	1,541.9 - 1,766.3	895	<b>2,248.2</b>	2,103.3 - 2,400.5	360	<b>2,074.0</b>	1,865.2 - 2,299.7
2004	849	<b>1,652.8</b>	1,543.5 - 1,767.8	912	<b>2,277.7</b>	2,132.3 - 2,430.5	398	<b>2,275.2</b>	2,057.1 - 2,510.1
2005	964	<b>1,866.9</b>	1,750.9 - 1,988.5	875	<b>2,182.4</b>	2,040.1 - 2,331.9	404	<b>2,279.4</b>	2,062.5 - 2,512.9
2006	912	<b>1,748.5</b>	1,636.8 - 1,865.8	968	<b>2,399.6</b>	2,250.8 - 2,556.0	378	<b>2,069.3</b>	1,865.9 - 2,288.8
2007	892	<b>1,679.0</b>	1,570.6 - 1,792.9	907	<b>2,240.1</b>	2,096.6 - 2,390.7	412	<b>2,204.0</b>	1,996.3 - 2,427.5
2008	945	<b>1,703.9</b>	1,597.0 - 1,816.1	873	<b>2,169.6</b>	2,028.1 - 2,318.5	386	<b>2,017.4</b>	1,821.1 - 2,229.0
2009	947	<b>1,650.3</b>	1,546.8 - 1,758.8	823	<b>2,062.6</b>	1,924.1 - 2,208.5	447	<b>2,309.1</b>	2,100.0 - 2,533.4
2010	1,001	<b>1,698.8</b>	1,595.2 - 1,807.4	845	<b>2,133.2</b>	1,991.8 - 2,282.1	361	<b>1,814.3</b>	1,631.9 - 2,011.4
2011	992	<b>1,643.7</b>	1,543.0 - 1,749.3	824	<b>2,091.3</b>	1,950.9 - 2,239.1	393	<b>1,951.0</b>	1,762.8 - 2,153.7
2012	1,080	<b>1,670.7</b>	1,572.5 - 1,773.4	848	<b>2,156.9</b>	2,014.1 - 2,307.1	407	<b>1,977.4</b>	1,789.9 - 2,179.1
2013	1,142	<b>1,673.2</b>	1,577.6 - 1,773.2	823	<b>2,088.7</b>	1,948.4 - 2,236.4	412	<b>1,971.5</b>	1,785.7 - 2,171.4
2014	1,207	<b>1,680.4</b>	1,586.9 - 1,777.9	896	<b>2,256.0</b>	2,110.7 - 2,408.7	380	<b>1,793.4</b>	1,617.6 - 1,983.1
2015	1,271	<b>1,695.0</b>	1,603.1 - 1,790.8	804	<b>2,021.8</b>	1,884.5 - 2,166.5	385	<b>1,816.5</b>	1,639.5 - 2,007.3
2016	1,238	<b>1,581.4</b>	1,494.5 - 1,672.0	876	<b>2,167.1</b>	2,026.0 - 2,315.5	395	<b>1,836.9</b>	1,660.2 - 2,027.3
2017	1,322	<b>1,621.0</b>	1,534.8 - 1,710.8	848	<b>2,048.9</b>	1,913.3 - 2,191.5	382	<b>1,777.2</b>	1,603.5 - 1,964.7
2018	1,274	<b>1,512.3</b>	1,430.4 - 1,597.7	899	<b>2,069.8</b>	1,936.7 - 2,209.7	388	<b>1,792.0</b>	1,618.1 - 1,979.5

**Table 8. Joinpoint Trend Analysis Results: Annual Percent Change (APC) in rates of New Cancer Cases per 100,000 for Joinpoint-identified trend segments, by sex and age group, Maine, 1999-2018**

Year	All Sexes				
	Under 65 Years		65-74 Years	75-84 Years	85 Years and Older
	APC (95% CI)	APC in Age-adjusted Rates (95% CI)	APC (95% CI)	APC (95% CI)	APC (95% CI)
1999	<b>4.3*</b> (2.7 to 6.0) 1999-2004	<b>4.9</b> (-2.5 to 12.58) 1999-2001	<b>-0.2</b> (-1.1 to 0.7) 1999-2005	<b>1.5</b> (-1.4 to 4.5) 1999-2003	<b>-1.1*</b> (-1.5 to -0.8) 1999-2018
2000					
2001					
2002					
2003		<b>-0.5*</b> (-0.7 to -0.3) 2001-2018	<b>-2.4*</b> (-3.1 to -1.7) 2005-2013	<b>-1.3*</b> (-1.7 to -1.0) 2003-2018	
2004					
2005	<b>0.6*</b> (0.3 to 0.9) 2004-2018				
2006					
2007					
2008					
2009					
2010					
2011					
2012					
2013			<b>-0.2</b> (-1.3 to 0.9) 2013-2018		
2014					
2015					
2016					
2017					
2018					

Data Source: Maine CDC Cancer Registry, based on November 2020 NPCR-CSS data submission.  
 APC: Annual Percent Change. All APCs are for age-specific crude rates unless otherwise specified.  
 95% CI: 95% Confidence Interval of the APC.

- Significantly Decreasing
- No Significant Change
- Significantly Increasing

**Table 8 (continued). Joinpoint Trend Analysis Results: Annual Percent Change (APC) in rates of New Cancer Cases per 100,000 for Joinpoint-identified trend segments, by sex and age group, Maine, 1999-2018**

Year	Males				
	Under 65 Years		65-74 Years	75-84 Years	85 Years and Older
	APC (95% CI)	APC in Age-adjusted Rates (95% CI)	APC (95% CI)	APC (95% CI)	APC (95% CI)
1999	<b>5.5*</b> (3.4 to 7.7) 1999-2004	<b>1.8</b> (-0.3 to 4.0) 1999-2004	<b>-1.1*</b> (-2.1 to -0.2) 1999-2006	<b>-1.8*</b> (-1.1 to -1.4) 1999-2018	<b>-1.6*</b> (-2.2 to -1.1) 1999-2018
2000					
2001					
2002					
2003	<b>0.1</b> (-0.3 to 0.4) 2004-2018	<b>-1.4*</b> (-1.8 to -1.0) 2004-2018	<b>-3.9*</b> (-4.9 to -3.0) 2006-2014	<b>-1.8*</b> (-1.1 to -1.4) 1999-2018	<b>-1.6*</b> (-2.2 to -1.1) 1999-2018
2004					
2005					
2006					
2007					
2008					
2009					
2010					
2011					
2012					
2013	<b>2.0</b> (-0.1 to 4.1) 2014-2018	<b>-1.4*</b> (-1.8 to -1.0) 2004-2018	<b>-3.9*</b> (-4.9 to -3.0) 2006-2014	<b>-1.8*</b> (-1.1 to -1.4) 1999-2018	<b>-1.6*</b> (-2.2 to -1.1) 1999-2018
2014					
2015					
2016					
2017					
2018					

Data Source: Maine CDC Cancer Registry, based on November 2020 NPCR-CSS data submission.  
 APC: Annual Percent Change. All APCs are for age-specific crude rates unless otherwise specified.  
 95% CI: 95% Confidence Interval of the APC.

- Significantly Decreasing
- No Significant Change
- Significantly Increasing

**Table 8 (continued). Joinpoint Trend Analysis Results: Annual Percent Change (APC) in rates of New Cancer Cases per 100,000 for Joinpoint-identified trend segments, by sex and age group, Maine, 1999-2018**

Year	Females				
	Under 65 Years		65-74 Years	75-84 Years	85 Years and Older
	APC (95% CI)	APC in Age-adjusted Rates (95% CI)	APC (95% CI)	APC (95% CI)	APC (95% CI)
1999	<b>7.0</b> (-1.4 to 16.1) 1999-2001	<b>4.0</b> (-1.9 to 10.3) 1999-2001			
2000					
2001					
2002					
2003					
2004					
2005					
2006	<b>-0.4</b> (-0.8 to 0.1) 2001-2012				
2007					
2008	<b>-0.5*</b> (-0.7 to -0.2) 1999-2018	<b>-0.3</b> (-0.7 to 0.0) 1999-2018			
2009					
2010					
2011					
2012					
2013			<b>2.4</b> (-3.1 to 8.1) 2012-2015		
2014					
2015			<b>-1.5</b> (-4.2 to 1.3) 2015-2018		
2016					
2017					
2018					

Data Source: Maine CDC Cancer Registry, based on November 2020 NPCR-CSS data submission.  
 APC: Annual Percent Change. All APCs are for age-specific crude rates unless otherwise specified.  
 95% CI: 95% Confidence Interval of the APC,

- Significantly Decreasing
- No Significant Change
- Significantly Increasing

**Table 9. Trends over time in Cancer Deaths by sex and age group, Maine, 1999-2018**

Year	All Sexes					
	Under 65 Years			65 Years and Older		
	N	Rate	95% CI	N	Rate	95% CI
1999	817	<b>75.3</b>	70.1 - 80.5	2,218	<b>1,220.8</b>	1,170.0 - 1,271.6
2000	819	<b>75.0</b>	69.9 - 80.2	2,251	<b>1,227.4</b>	1,176.7 - 1,278.1
2001	812	<b>73.8</b>	68.7 - 78.9	2,233	<b>1,205.9</b>	1,155.9 - 1,256.0
2002	904	<b>81.5</b>	76.2 - 86.8	2,302	<b>1,233.2</b>	1,182.8 - 1,283.6
2003	886	<b>79.2</b>	74.0 - 84.4	2,234	<b>1,186.8</b>	1,137.6 - 1,236.0
2004	863	<b>76.8</b>	71.7 - 81.9	2,261	<b>1,191.2</b>	1,142.1 - 1,240.3
2005	926	<b>82.1</b>	76.8 - 87.4	2,292	<b>1,197.6</b>	1,148.6 - 1,246.6
2006	926	<b>82.0</b>	76.7 - 87.3	2,163	<b>1,112.4</b>	1,065.5 - 1,159.3
2007	881	<b>78.0</b>	72.9 - 83.2	2,231	<b>1,126.7</b>	1,080.0 - 1,173.5
2008	908	<b>80.6</b>	75.3 - 85.8	2,185	<b>1,074.6</b>	1,029.5 - 1,119.6
2009	882	<b>78.6</b>	73.4 - 83.8	2,251	<b>1,083.9</b>	1,039.2 - 1,128.7
2010	977	<b>87.4</b>	82.0 - 92.9	2,270	<b>1,075.4</b>	1,031.2 - 1,119.7
2011	901	<b>81.0</b>	75.7 - 86.3	2,300	<b>1,063.7</b>	1,020.3 - 1,107.2
2012	903	<b>81.9</b>	76.5 - 87.2	2,323	<b>1,026.2</b>	984.4 - 1,067.9
2013	884	<b>80.9</b>	75.5 - 86.2	2,343	<b>996.7</b>	956.4 - 1,037.1
2014	863	<b>79.4</b>	74.1 - 84.7	2,346	<b>963.4</b>	924.4 - 1,002.4
2015	883	<b>81.9</b>	76.5 - 87.2	2,515	<b>1,003.8</b>	964.6 - 1,043.1
2016	866	<b>80.6</b>	75.3 - 86.0	2,409	<b>934.9</b>	897.5 - 972.2
2017	890	<b>83.2</b>	77.7 - 88.7	2,501	<b>939.5</b>	902.6 - 976.3
2018	883	<b>83.1</b>	77.6 - 88.6	2,392	<b>866.7</b>	831.9 - 901.4

Data Source: Centers for Disease Control and Prevention, National Center for Health Statistics. Underlying Cause of Death 1999-2019 on CDC WONDER Online Database, released in 2020. Cancer deaths were identified using underlying cause-of-death codes C00-C97 (malignant neoplasms).  
 N: Number of cancer deaths occurring that year.  
 Rates are cancer deaths per 100,000 population (crude rate).  
 95% CI: 95% Confidence Interval of the rate.

Year	All Sexes								
	65-74 Years			75-84 Years			85 Years and Older		
	N	Rate	95% CI	N	Rate	95% CI	N	Rate	95% CI
1999	883	<b>920.0</b>	859.4 - 980.7	897	<b>1,427.8</b>	1,334.4 - 1,521.2	438	<b>1,914.1</b>	1,734.8 - 2,093.3
2000	842	<b>875.3</b>	816.2 - 934.4	938	<b>1,468.1</b>	1,374.2 - 1,562.1	471	<b>2,020.1</b>	1,837.6 - 2,202.5
2001	790	<b>821.0</b>	763.8 - 878.3	967	<b>1,485.5</b>	1,391.9 - 1,579.2	476	<b>1,995.9</b>	1,816.6 - 2,175.2
2002	840	<b>871.9</b>	812.9 - 930.8	973	<b>1,471.3</b>	1,378.8 - 1,563.7	489	<b>2,021.6</b>	1,842.4 - 2,200.8
2003	777	<b>803.9</b>	747.4 - 860.5	1,001	<b>1,492.8</b>	1,400.3 - 1,585.3	456	<b>1,858.4</b>	1,687.8 - 2,029.0
2004	786	<b>809.0</b>	752.4 - 865.5	966	<b>1,426.5</b>	1,336.5 - 1,516.4	509	<b>2,042.0</b>	1,864.6 - 2,219.4
2005	778	<b>795.0</b>	739.2 - 850.9	987	<b>1,448.7</b>	1,358.3 - 1,539.1	527	<b>2,075.4</b>	1,898.2 - 2,252.6
2006	745	<b>749.9</b>	696.0 - 803.7	948	<b>1,378.0</b>	1,290.3 - 1,465.7	470	<b>1,786.8</b>	1,625.3 - 1,948.3
2007	735	<b>723.5</b>	671.2 - 775.8	979	<b>1,410.5</b>	1,322.2 - 1,498.9	517	<b>1,914.2</b>	1,749.2 - 2,079.3
2008	784	<b>739.7</b>	688.0 - 791.5	894	<b>1,287.4</b>	1,203.0 - 1,371.8	507	<b>1,816.2</b>	1,658.1 - 1,974.3
2009	780	<b>708.9</b>	659.2 - 758.7	921	<b>1,330.4</b>	1,244.5 - 1,416.3	550	<b>1,935.6</b>	1,773.8 - 2,097.4
2010	820	<b>727.9</b>	678.1 - 777.7	931	<b>1,343.6</b>	1,257.3 - 1,429.9	519	<b>1,781.3</b>	1,628.0 - 1,934.6
2011	841	<b>720.6</b>	671.9 - 769.3	905	<b>1,298.3</b>	1,213.8 - 1,382.9	554	<b>1,859.0</b>	1,704.2 - 2,013.8
2012	823	<b>654.8</b>	610.0 - 699.5	928	<b>1,321.7</b>	1,236.7 - 1,406.8	572	<b>1,877.1</b>	1,723.2 - 2,030.9
2013	849	<b>636.6</b>	593.8 - 679.4	878	<b>1,244.5</b>	1,162.2 - 1,326.8	616	<b>1,977.8</b>	1,821.6 - 2,134.0
2014	901	<b>641.8</b>	599.9 - 683.8	863	<b>1,208.5</b>	1,127.9 - 1,289.1	582	<b>1,834.7</b>	1,685.7 - 1,983.8
2015	925	<b>631.8</b>	591.1 - 672.5	972	<b>1,348.2</b>	1,263.4 - 1,432.9	618	<b>1,929.7</b>	1,777.6 - 2,081.9
2016	919	<b>603.3</b>	564.3 - 642.3	860	<b>1,177.1</b>	1,098.4 - 1,255.8	630	<b>1,951.1</b>	1,798.7 - 2,103.4
2017	1,015	<b>640.3</b>	600.9 - 679.7	892	<b>1,189.9</b>	1,111.8 - 1,268.0	594	<b>1,815.0</b>	1,669.0 - 1,960.9
2018	915	<b>560.1</b>	523.8 - 596.4	913	<b>1,152.6</b>	1,077.8 - 1,227.4	564	<b>1,687.7</b>	1,548.4 - 1,826.9



**Table 9 (continued) Trends over time in Cancer Deaths by sex and age group, Maine, 1999-2018**

Year	Males					
	Under 65 Years			65 Years and Older		
	N	Rate	95% CI	N	Rate	95% CI
1999	401	<b>74.1</b>	66.8 - 81.3	1,132	<b>1,511.3</b>	1,423.2 - 1,599.3
2000	419	<b>77.0</b>	69.6 - 84.3	1,128	<b>1,484.1</b>	1,397.5 - 1,570.7
2001	439	<b>80.0</b>	72.5 - 87.5	1,170	<b>1,514.2</b>	1,427.4 - 1,601.0
2002	499	<b>90.2</b>	82.3 - 98.1	1,186	<b>1,513.9</b>	1,427.7 - 1,600.0
2003	445	<b>79.7</b>	72.3 - 87.1	1,127	<b>1,419.0</b>	1,336.1 - 1,501.8
2004	477	<b>85.0</b>	77.4 - 92.6	1,141	<b>1,417.2</b>	1,334.9 - 1,499.4
2005	516	<b>91.6</b>	83.7 - 99.5	1,176	<b>1,442.8</b>	1,360.3 - 1,525.2
2006	477	<b>84.5</b>	77.0 - 92.1	1,151	<b>1,382.6</b>	1,302.7 - 1,462.5
2007	456	<b>80.9</b>	73.4 - 88.3	1,160	<b>1,360.9</b>	1,282.6 - 1,439.2
2008	466	<b>82.8</b>	75.2 - 90.3	1,179	<b>1,339.2</b>	1,262.8 - 1,415.7
2009	469	<b>83.7</b>	76.1 - 91.3	1,192	<b>1,317.0</b>	1,242.2 - 1,391.7
2010	525	<b>94.2</b>	86.1 - 102.2	1,192	<b>1,289.1</b>	1,215.9 - 1,362.3
2011	492	<b>88.7</b>	80.9 - 96.6	1,212	<b>1,268.2</b>	1,196.8 - 1,339.6
2012	491	<b>89.4</b>	81.5 - 97.3	1,211	<b>1,198.6</b>	1,131.1 - 1,266.1
2013	491	<b>90.2</b>	82.2 - 98.2	1,241	<b>1,173.5</b>	1,108.3 - 1,238.8
2014	500	<b>92.4</b>	84.3 - 100.5	1,225	<b>1,113.1</b>	1,050.8 - 1,175.4
2015	453	<b>84.3</b>	76.5 - 92.0	1,290	<b>1,135.1</b>	1,073.2 - 1,197.1
2016	467	<b>87.2</b>	79.3 - 95.1	1,271	<b>1,085.8</b>	1,026.1 - 1,145.5
2017	471	<b>88.3</b>	80.3 - 96.3	1,352	<b>1,117.2</b>	1,057.6 - 1,176.7
2018	478	<b>90.4</b>	82.1 - 98.3	1,238	<b>986.2</b>	931.3 - 1,041.2

Data Source: Centers for Disease Control and Prevention, National Center for Health Statistics. Underlying Cause of Death 1999-2019 on CDC WONDER Online Database, released in 2020. Cancer deaths were identified using underlying cause-of-death codes C00-C97 (malignant neoplasms).  
 N: Number of cancer deaths occurring that year.  
 Rates are cancer deaths per 100,000 population (crude rate).  
 95% CI: 95% Confidence Interval of the rate.

Year	Males								
	65-74 Years			75-84 Years			85 Years and Older		
	N	Rate	95% CI	N	Rate	95% CI	N	Rate	95% CI
1999	487	<b>1,111.9</b>	1,013.2 - 1,210.7	450	<b>1,808.8</b>	1,641.7 - 1,976.0	195	<b>3,131.5</b>	2,692.0 - 3,571.1
2000	470	<b>1,064.9</b>	968.7 - 1,161.2	480	<b>1,887.3</b>	1,718.5 - 2,056.2	178	<b>2,765.3</b>	2,359.0 - 3,171.5
2001	443	<b>995.8</b>	903.0 - 1,088.5	523	<b>2,006.0</b>	1,834.1 - 2,177.9	204	<b>3,040.7</b>	2,623.4 - 3,458.0
2002	476	<b>1,061.7</b>	966.3 - 1,157.1	490	<b>1,845.9</b>	1,682.5 - 2,009.4	220	<b>3,158.7</b>	2,741.3 - 3,576.0
2003	428	<b>949.0</b>	859.1 - 1,038.9	503	<b>1,851.8</b>	1,690.0 - 2,013.6	196	<b>2,737.4</b>	2,354.2 - 3,120.7
2004	425	<b>933.7</b>	845.0 - 1,022.5	499	<b>1,809.1</b>	1,650.4 - 1,967.8	217	<b>2,927.3</b>	2,537.8 - 3,316.8
2005	424	<b>922.9</b>	835.1 - 1,010.8	519	<b>1,858.7</b>	1,698.8 - 2,018.7	233	<b>3,046.9</b>	2,655.7 - 3,438.2
2006	424	<b>904.1</b>	818.0 - 990.1	509	<b>1,796.6</b>	1,640.5 - 1,952.7	218	<b>2,718.5</b>	2,357.7 - 3,079.4
2007	400	<b>830.3</b>	748.9 - 911.7	493	<b>1,713.8</b>	1,562.5 - 1,865.1	267	<b>3,219.6</b>	2,833.4 - 3,605.8
2008	449	<b>894.0</b>	811.3 - 976.7	484	<b>1,665.8</b>	1,517.4 - 1,865.1	246	<b>2,808.9</b>	2,457.9 - 3,159.9
2009	432	<b>825.7</b>	747.8 - 903.5	497	<b>1,704.3</b>	1,554.5 - 1,854.2	263	<b>2,912.8</b>	2,560.8 - 3,264.9
2010	456	<b>849.7</b>	771.7 - 927.7	499	<b>1,693.6</b>	1,545.0 - 1,842.3	237	<b>2,537.7</b>	2,214.7 - 2,860.8
2011	467	<b>836.8</b>	760.9 - 912.6	493	<b>1,640.3</b>	1,495.5 - 1,785.1	252	<b>2,597.4</b>	2,276.7 - 2,918.1
2012	466	<b>771.3</b>	701.3 - 841.3	491	<b>1,608.1</b>	1,465.9 - 1,750.4	254	<b>2,518.8</b>	2,209.1 - 2,828.6
2013	457	<b>709.3</b>	644.3 - 774.3	499	<b>1,616.1</b>	1,474.3 - 1,757.9	285	<b>2,729.9</b>	2,412.9 - 3,046.8
2014	497	<b>733.4</b>	668.9 - 797.9	459	<b>1,460.7</b>	1,327.0 - 1,594.3	269	<b>2,476.5</b>	2,180.6 - 2,772.5
2015	490	<b>692.1</b>	630.8 - 753.4	516	<b>1,621.1</b>	1,481.2 - 1,761.0	284	<b>2,578.5</b>	2,278.6 - 2,878.4
2016	513	<b>698.7</b>	638.2 - 759.1	455	<b>1,401.5</b>	1,272.7 - 1,530.3	303	<b>2,714.6</b>	2,408.9 - 3,020.2
2017	567	<b>743.8</b>	682.6 - 805.1	485	<b>1,451.7</b>	1,322.5 - 1,580.9	300	<b>2,635.0</b>	2,336.9 - 2,933.2
2018	501	<b>639.1</b>	584.4 - 697.6	479	<b>1,353.6</b>	1,232.4 - 1,474.8	258	<b>2,195.2</b>	1,935.5 - 2,480.0

**Table 9 (continued). Trends over time in Cancer Deaths by sex and age group, Maine, 1999-2018**

Year	Females					
	Under 65 Years			65 Years and Older		
	N	Rate	95% CI	N	Rate	95% CI
1999	416	<b>76.5</b>	69.1 - 83.8	1,086	<b>1,017.1</b>	956.6 - 1,077.6
2000	400	<b>73.1</b>	65.9 - 80.3	1,123	<b>1,045.6</b>	984.5 - 1,106.8
2001	373	<b>67.6</b>	60.7 - 74.5	1,063	<b>985.2</b>	926.0 - 1,044.4
2002	405	<b>72.9</b>	65.8 - 80.0	1,116	<b>1,030.2</b>	969.8 - 1,090.7
2003	441	<b>78.8</b>	71.4 - 86.1	1,107	<b>1,017.3</b>	957.4 - 1,077.2
2004	386	<b>68.6</b>	61.8 - 75.5	1,120	<b>1,024.8</b>	964.8 - 1,084.8
2005	410	<b>72.7</b>	65.6 - 79.7	1,116	<b>1,015.8</b>	956.2 - 1,075.4
2006	449	<b>79.5</b>	72.1 - 86.8	1,012	<b>910.1</b>	854.0 - 966.2
2007	425	<b>75.2</b>	68.1 - 82.4	1,071	<b>949.7</b>	892.9 - 1,006.6
2008	442	<b>78.4</b>	71.0 - 85.7	1,006	<b>872.5</b>	818.6 - 926.4
2009	413	<b>73.5</b>	66.5 - 80.6	1,059	<b>903.9</b>	849.5 - 985.3
2010	452	<b>80.8</b>	73.3 - 88.2	1,078	<b>908.8</b>	854.6 - 963.1
2011	409	<b>73.4</b>	66.3 - 80.5	1,088	<b>901.8</b>	848.2 - 955.4
2012	412	<b>74.4</b>	67.2 - 81.6	1,112	<b>887.2</b>	835.0 - 939.3
2013	393	<b>71.6</b>	64.5 - 78.7	1,102	<b>852.2</b>	801.8 - 902.5
2014	363	<b>66.6</b>	59.7 - 73.4	1,121	<b>840.0</b>	790.8 - 889.2
2015	430	<b>79.5</b>	71.9 - 87.0	1,225	<b>894.9</b>	844.8 - 945.0
2016	399	<b>74.1</b>	66.9 - 81.4	1,138	<b>809.2</b>	762.2 - 856.2
2017	419	<b>78.1</b>	70.7 - 85.6	1,149	<b>791.4</b>	745.6 - 837.1
2018	405	<b>76.0</b>	68.6 - 83.5	1,154	<b>766.9</b>	722.7 - 811.2

Data Source: Centers for Disease Control and Prevention, National Center for Health Statistics. Underlying Cause of Death 1999-2019 on CDC WONDER Online Database, released in 2020. Cancer deaths were identified using underlying cause-of-death codes C00-C97 (malignant neoplasms).  
 N: Number of cancer deaths occurring that year.  
 Rates are cancer deaths per 100,000 population (crude rate).  
 95% CI: 95% Confidence Interval of the rate.

Year	Females								
	65-74 Years			75-84 Years			85 Years and Older		
	N	Rate	95% CI	N	Rate	95% CI	N	Rate	95% CI
1999	396	<b>759.0</b>	684.2 - 833.7	447	<b>1,178.0</b>	1,068.8 - 1,287.2	243	<b>1,458.9</b>	1,275.5 - 1,642.4
2000	372	<b>714.5</b>	641.9 - 787.1	458	<b>1,190.9</b>	1,081.9 - 1,300.0	293	<b>1,735.9</b>	1,537.1 - 1,934.7
2001	347	<b>670.7</b>	600.2 - 741.3	444	<b>1,137.8</b>	1,032.0 - 1,243.7	272	<b>1,586.9</b>	1,398.3 - 1,775.5
2002	364	<b>706.6</b>	634.0 - 779.2	483	<b>1,220.1</b>	1,111.3 - 1,328.9	269	<b>1,561.8</b>	1,375.1 - 1,748.4
2003	349	<b>677.0</b>	606.0 - 748.1	498	<b>1,248.4</b>	1,138.8 - 1,358.0	260	<b>1,496.2</b>	1,314.4 - 1,678.1
2004	361	<b>699.0</b>	626.9 - 771.1	467	<b>1,163.5</b>	1,058.0 - 1,269.0	292	<b>1,667.3</b>	1,476.1 - 1,858.6
2005	354	<b>681.9</b>	610.8 - 752.9	468	<b>1,164.0</b>	1,058.5 - 1,269.4	294	<b>1,656.7</b>	1,467.3 - 1,846.1
2006	321	<b>612.0</b>	545.1 - 679.0	439	<b>1,084.9</b>	983.4 - 1,186.4	252	<b>1,378.2</b>	1,208.0 - 1,548.3
2007	335	<b>627.2</b>	560.0 - 694.4	486	<b>1,195.9</b>	1,089.5 - 1,302.2	250	<b>1,335.8</b>	1,170.2 - 1,501.4
2008	335	<b>600.8</b>	536.5 - 665.1	410	<b>1,015.2</b>	916.9 - 1,113.5	261	<b>1,362.4</b>	1,197.1 - 1,527.7
2009	348	<b>603.0</b>	539.7 - 666.4	424	<b>1,058.3</b>	957.5 - 1,159.0	287	<b>1,480.4</b>	1,309.2 - 1,651.7
2010	364	<b>617.1</b>	553.7 - 680.5	432	<b>1,084.6</b>	982.3 - 1,186.9	282	<b>1,424.5</b>	1,258.2 - 1,590.7
2011	374	<b>614.1</b>	551.9 - 676.3	412	<b>1,039.1</b>	938.8 - 1,139.5	302	<b>1,502.6</b>	1,333.1 - 1,672.0
2012	357	<b>546.9</b>	490.2 - 603.7	437	<b>1,101.3</b>	998.1 - 1,204.6	318	<b>1,559.7</b>	1,388.2 - 1,731.1
2013	392	<b>568.6</b>	512.3 - 624.9	379	<b>955.3</b>	859.1 - 1,051.5	331	<b>1,598.6</b>	1,426.4 - 1,770.8
2014	404	<b>556.4</b>	502.1 - 610.7	404	<b>1,010.4</b>	911.8 - 1,108.9	313	<b>1,500.6</b>	1,334.3 - 1,666.8
2015	435	<b>575.3</b>	521.2 - 629.4	456	<b>1,132.4</b>	1,028.5 - 1,236.4	334	<b>1,589.6</b>	1,419.2 - 1,760.1
2016	406	<b>514.5</b>	464.5 - 564.6	405	<b>997.6</b>	900.5 - 1,094.8	327	<b>1,547.7</b>	1,380.0 - 1,715.5
2017	448	<b>544.4</b>	494.0 - 594.8	407	<b>979.4</b>	884.2 - 1,074.6	294	<b>1,377.5</b>	1,220.0 - 1,535.0
2018	414	<b>487.2</b>	441.4 - 536.4	434	<b>990.3</b>	897.1 - 1,083.4	306	<b>1,412.4</b>	1,254.1 - 1,570.6

**Table 10. Joinpoint Trend Analysis Results: Annual Percent Change (APC) in rates of Cancer Deaths per 100,000 for Joinpoint-identified trend segments, by sex and age group, Maine, 1999-2018**

Year	All Sexes				
	Under 65 Years		65-74 Years	75-84 Years	85 Years and Older
	APC (95% CI)	APC in Age-adjusted Rates (95% CI)	APC (95% CI)	APC (95% CI)	APC (95% CI)
1999	<b>0.4*</b> (0.2 to 0.7) 1999-2018	<b>-1.8*</b> (-2.2 to -1.5) 1999-2014	<b>-2.2*</b> (-2.5 to -2.0) 1999-2018	<b>-1.3*</b> (-1.5 to -1.0) 1999-2018	<b>-0.5*</b> (0.8 to 0.1) 1999-2018
2000					
2001					
2002					
2003					
2004					
2005					
2006					
2007					
2008					
2009					
2010					
2011					
2012					
2013					
2014					
2015		<b>0.9</b> (-2.0 to 3.9) 2014-2018			
2016					
2017					
2018					
2018					

Data Source: Centers for Disease Control and Prevention, National Center for Health Statistics. Underlying Cause of Death 1999-2019 on CDC WONDER Online Database, released in 2020.

APC: Annual Percent Change. All APCs are for age-specific crude rates unless otherwise specified.

95% CI: 95% Confidence Interval of the APC.

- Significantly Decreasing
- No Significant Change
- Significantly Increasing

**Table 10 (continued). Joinpoint Trend Analysis Results: Annual Percent Change (APC) in rates of Cancer Deaths per 100,000 for Joinpoint-identified trend segments, by sex and age group, Maine, 1999-2018**

Year	Males				
	Under 65 Years		65-74 Years	75-84 Years	85 Years and Older
	APC (95% CI)	APC in Age-adjusted Rates (95% CI)	APC (95% CI)	APC (95% CI)	APC (95% CI)
1999	<b>0.7*</b> (0.2 to 1.1) 1999-2018	<b>-1.3*</b> (-1.7 to -0.9) 1999-2018	<b>-2.5*</b> (-2.9 to -2.2) 1999-2018	<b>-1.7*</b> (-2.0 to -1.3) 1999-2018	<b>-1.2*</b> (-1.8 to -0.7) 1999-2018
2000					
2001					
2002					
2003					
2004					
2005					
2006					
2007					
2008					
2009					
2010					
2011					
2012					
2013					
2014					
2015					
2016					
2017					
2018					

Data Source: Centers for Disease Control and Prevention, National Center for Health Statistics. Underlying Cause of Death 1999-2019 on CDC WONDER Online Database, released in 2020.

APC: Annual Percent Change. All APCs are for age-specific crude rates unless otherwise specified.

95% CI: 95% Confidence Interval of the APC.

- Significantly Decreasing
- No Significant Change
- Significantly Increasing

**Table 10 (continued). Joinpoint Trend Analysis Results: Annual Percent Change (APC) in rates of Cancer Deaths per 100,000 for Joinpoint-identified trend segments, by sex and age group, Maine, 1999-2018**

Year	Females				
	Under 65 Years		65-74 Years	75-84 Years	85 Years and Older
	APC (95% CI)	APC in Age-adjusted Rates (95% CI)	APC (95% CI)	APC (95% CI)	APC (95% CI)
1999	0.1 (-0.3 to 0.6) 1999-2018	-1.7* (-2.2 to -1.3) 1999-2018	-1.9* (-2.2 to -1.6) 1999-2018	-1.1* (-1.5 to -0.7) 1999-2018	-0.4 (-0.9 to 0.2) 1999-2018
2000					
2001					
2002					
2003					
2004					
2005					
2006					
2007					
2008					
2009					
2010					
2011					
2012					
2013					
2014					
2015					
2016					
2017					
2018					

Data Source: Centers for Disease Control and Prevention, National Center for Health Statistics. Underlying Cause of Death 1999-2019 on CDC WONDER Online Database, released in 2020.

APC: Annual Percent Change. All APCs are for age-specific crude rates unless otherwise specified.

95% CI: 95% Confidence Interval of the APC.

- Significantly Decreasing
- No Significant Change
- Significantly Increasing

**Table 11. Stage at Diagnosis of New Cancer Cases by site and age group, Maine, 2009-2018**

Site	Stage	Under 65 Years				65 Years and Older			
		Number	% of Total	Crude Rate	95% CI	Number	% of Total	Crude Rate	95% CI
Colon and Rectum	Early Stage	1,250	45.0	<b>11.5</b>	10.8 - 12.1	1,787	41.1	<b>74.7</b>	71.3 - 78.3
	Late Stage	1,459	52.6	<b>13.4</b>	12.7 - 14.1	2,228	51.3	<b>93.2</b>	89.4 - 97.1
	Unstaged	66	2.4	<b>0.6</b>	0.5 - 0.8	330	7.6	<b>13.8</b>	12.4 - 15.4
	Total	2,775	100.0	<b>25.4</b>	24.5 - 26.4	4,345	100.0	<b>181.7</b>	176.4 - 187.2
Lung and Bronchus	Early Stage	781	18.0	<b>7.2</b>	6.7 - 7.7	2,224	23.7	<b>93.0</b>	89.2 - 97.0
	Late Stage	3,464	79.9	<b>31.7</b>	30.7 - 32.8	6,491	69.2	<b>271.5</b>	265.0 - 278.2
	Unstaged	89	2.1	<b>0.8</b>	0.7 - 1.0	662	7.1	<b>27.7</b>	25.6 - 29.9
	Total	4,334	100.0	<b>39.7</b>	38.5 - 40.9	9,377	100.0	<b>392.2</b>	384.3 - 400.3
Breast (female)	Early Stage	5,680	72.7	<b>103.8</b>	101.1 - 106.6	5,144	76.8	<b>390.1</b>	379.5 - 400.9
	Late Stage	2,091	26.8	<b>38.2</b>	36.6 - 39.9	1,444	21.5	<b>109.5</b>	103.9 - 115.3
	Unstaged	37	0.5	<b>0.7</b>	0.5 - 0.9	114	1.7	<b>8.6</b>	7.1 - 10.4
	Total	7,808	100.0	<b>142.7</b>	139.6 - 145.9	6,702	100.0	<b>508.2</b>	496.1 - 520.5
Prostate	Early Stage	2,719	76.5	<b>50.0</b>	437.7 - 470.6	4,238	73.6	<b>395.4</b>	383.5 - 407.4
	Late Stage	781	22.0	<b>14.3</b>	13.4 - 15.4	1,286	22.3	<b>120.0</b>	113.5 - 126.7
	Unstaged	56	1.6	<b>1.0</b>	0.8 - 1.3	237	4.1	<b>22.1</b>	19.4 - 25.1
	Total	3,556	100.0	<b>65.3</b>	63.2 - 67.5	5,761	100.0	<b>537.4</b>	523.6 - 551.5
Urinary Bladder	Early Stage	DSP	DSP	<b>DSP</b>	DSP	3,141	84.4	<b>131.4</b>	126.8 - 136.1
	Late Stage	182	13.2	<b>1.7</b>	1.4 - 1.9	449	12.1	<b>18.8</b>	17.1 - 20.6
	Unstaged	DSP	DSP	<b>DSP</b>	DSP	131	3.5	<b>5.5</b>	4.6 - 6.5
	Total	1,384	100.0	<b>12.7</b>	12.0 - 13.4	3,721	100.0	<b>155.6</b>	150.7 - 160.7
Pancreas	Early Stage	88	11.6	<b>0.8</b>	0.6 - 1.0	246	14.8	<b>10.3</b>	9.0 - 11.7
	Late Stage	648	85.3	<b>5.9</b>	5.5 - 6.4	1,207	72.4	<b>50.5</b>	47.7 - 53.4
	Unstaged	24	3.2	<b>0.2</b>	0.1 - 0.3	214	12.8	<b>9.0</b>	7.8 - 10.2
	Total	760	100.0	<b>7.0</b>	6.5 - 7.5	1,667	100.0	<b>69.7</b>	66.4 - 73.2

Data Source: NAACCR Incidence Data - Cancer in North America (CiNA) Analytic File, 1995-2018, Public Use.

Includes tumors with behaviors of benign, borderline malignancy, in situ, malignant, only malignant in ICD-O-3, no longer reportable in ICD-O-3 and only malignant 2010+.

Early Stage: in situ and local. Late Stage: regional and distant.

N: Number of new cancer cases (total across all years). DSP: Data suppressed to protect privacy.

Crude rates are new cancer cases per 100,000 population. 95% CI: 95% Confidence Interval of the crude rate.

Subgroup counts might not sum to totals due to rounding.

**Table 11 (continued). Stage at Diagnosis of New Cancer Cases by site and age group, Maine, 2009-2018**

Site	Stage	65-74 Years				75-84 Years				85 Years and Older			
		N	% of Total	Crude Rate	95% CI	N	% of Total	Crude Rate	95% CI	N	% of Total	Crude Rate	95% CI
Colon and Rectum	Early Stage	809	45.0	59.6	55.6 - 63.9	654	40.7	91.0	84.1 - 98.2	324	34.4	103.1	92.1 - 114.9
	Late Stage	935	52.0	68.9	64.5 - 73.5	846	52.7	117.7	109.9 - 125.9	447	47.5	142.2	129.3 - 156.0
	Unstaged	53	2.9	3.9	2.9 - 5.1	106	6.6	14.7	12.1 - 17.8	171	18.2	54.4	46.5 - 63.2
	Total	1,797	100.0	132.4	126.4 - 138.7	1,606	100.0	223.3	212.6 - 234.5	942	100.0	299.6	280.8 - 319.4
Lung and Bronchus	Early Stage	1,110	23.7	81.8	77.0 - 86.7	905	25.1	125.9	117.8 - 134.3	209	19.1	66.5	57.8 - 76.1
	Late Stage	3,398	72.7	250.4	242.0 - 258.9	2,441	67.7	339.5	326.1 - 353.2	652	59.5	207.4	191.8 - 223.9
	Unstaged	167	3.6	12.3	10.5 - 14.3	261	7.2	36.3	32.0 - 41.0	234	21.4	74.4	65.2 - 84.6
	Total	4,675	100.0	344.5	334.7 - 354.5	3,607	100.0	501.6	485.4 - 518.3	1,095	100.0	348.3	328.0 - 369.5
Breast (female)	Early Stage	3,043	78.4	431.4	416.3 - 447.1	1,640	77.7	405.0	385.6 - 425.1	461	64.9	221.1	201.4 - 242.3
	Late Stage	812	20.9	115.1	107.3 - 123.3	442	20.9	109.2	99.2 - 119.8	190	26.8	91.1	78.6 - 105.1
	Unstaged	27	0.7	3.8	2.5 - 5.6	28	1.3	6.9	4.6 - 10.0	59	8.3	28.3	21.5 - 36.5
	Total	3,882	100.0	550.4	533.2 - 568.0	2,110	100.0	521.1	499.1 - 543.8	710	100.0	340.6	316.0 - 366.6
Prostate	Early Stage	2,959	77.3	453.9	437.7 - 470.6	1,140	73.5	362.9	342.1 - 384.6	139	36.5	131.2	110.3 - 154.9
	Late Stage	794	20.7	121.8	113.5 - 130.6	346	22.3	110.1	98.8 - 122.4	146	38.3	137.8	116.4 - 162.1
	Unstaged	75	2.0	11.5	9.0 - 14.4	66	4.3	21.0	16.2 - 26.7	96	25.2	90.6	73.4 - 110.7
	Total	3,828	100.0	587.2	568.8 - 606.1	1,552	100.0	494.1	469.8 - 519.3	381	100.0	359.6	324.4 - 397.6
Urinary Bladder	Early Stage	1,385	86.3	102.0	96.7 - 107.6	1,251	83.8	174.0	164.5 - 183.9	505	80.8	160.6	146.9 - 175.3
	Late Stage	192	12.0	14.1	12.2 - 16.3	185	12.4	25.7	22.2 - 29.7	72	11.5	22.9	17.9 - 28.8
	Unstaged	27	1.7	2.0	1.3 - 2.9	56	3.8	7.8	5.9 - 10.1	48	7.7	15.3	11.3 - 20.2
	Total	1,604	100.0	118.2	112.5 - 124.1	1,492	100.0	207.5	197.1 - 218.3	625	100.0	198.8	183.5 - 215.0
Pancreas	Early Stage	98	12.9	7.2	5.9 - 8.8	100	16.6	13.9	11.3 - 16.9	48	15.7	15.3	11.3 - 20.2
	Late Stage	622	81.8	45.8	42.3 - 49.6	435	72.4	60.5	54.9 - 66.5	150	49.0	47.7	40.4 - 56.0
	Unstaged	40	5.3	2.9	2.1 - 4.0	66	11.0	9.2	7.1 - 11.7	108	35.3	34.4	28.2 - 41.5
	Total	760	100.0	56.0	52.1 - 60.1	601	100.0	83.6	77.0 - 90.5	306	100.0	97.3	86.7 - 108.9

Data Source: NAACCR Incidence Data - Cancer in North America (CiNA) Analytic File, 1995-2018, Public Use.

Includes tumors with behaviors of benign, borderline malignancy, in situ, malignant, only malignant in ICD-O-3, no longer reportable in ICD-O-3 and only malignant 2010+.

Early Stage: in situ and local. Late Stage: regional and distant.

N: Number of new cancer cases (total across all years).

Crude rates are new cancer cases per 100,000 population. 95% CI: 95% Confidence Interval of the crude rate.

Subgroup counts might not sum to totals due to rounding.

**Table 12. Reporting Sources of Unstaged New Cancer Cases by site and age group, Maine, 2009-2018**

Site	Reporting Source	Under 65 Years			65 Years and Older		
		N	% of Unstaged Cancers	% of Total Cancers	N	% of Unstaged Cancers	% of Total Cancers
Colon and Rectum	Death Certificate or Autopsy Only	DSP	DSP	DSP	117	35.5	2.7
	All Other	DSP	DSP	DSP	213	64.5	4.9
	Total Unstaged	66	100.0	2.4	330	100.0	7.6
Lung and Bronchus	Death Certificate or Autopsy Only	55	61.8	1.3	447	67.5	4.8
	All Other	34	38.2	0.8	215	32.5	2.3
	Total Unstaged	89	100.0	2.1	662	100.0	7.1
Female Breast	Death Certificate or Autopsy Only	DSP	DSP	DSP	60	52.6	0.9
	All Other	DSP	DSP	DSP	54	47.4	0.8
	Total Unstaged	37	100.0	0.5	114	100.0	1.7
Prostate	Death Certificate or Autopsy Only	DSP	DSP	DSP	92	38.8	1.6
	All Other	DSP	DSP	DSP	145	61.2	2.5
	Total Unstaged	56	100.0	1.6	237	100.0	4.1
Urinary Bladder	Death Certificate or Autopsy Only	DSP	DSP	DSP	49	37.4	1.3
	All Other	DSP	DSP	DSP	82	62.6	2.2
	Total Unstaged	DSP	DSP	DSP	131	100.0	3.5
Pancreas	Death Certificate or Autopsy Only	DSP	DSP	DSP	117	54.7	7.0
	All Other	DSP	DSP	DSP	97	45.3	5.8
	Total Unstaged	24	100.0	3.2	214	100.0	12.8

Site	Reporting Source	65-74 Years			75-84 Years			85 Years and Older		
		N	% of Unstaged Cancers	% of Total Cancers	N	% of Unstaged Cancers	% of Total Cancers	N	% of Unstaged Cancers	% of Total Cancers
Colon and Rectum	Death Certificate or Autopsy Only	18	34.0	1.0	36	34.0	2.2	63	36.8	6.7
	All Other	35	66.0	1.9	70	66.0	4.4	108	63.2	11.5
	Total Unstaged	53	100.0	2.9	106	100.0	6.6	171	100.0	18.2
Lung and Bronchus	Death Certificate or Autopsy Only	116	69.5	2.5	160	61.3	4.4	171	73.1	15.6
	All Other	51	30.5	1.1	101	38.7	2.8	63	26.9	5.8
	Total Unstaged	167	100.0	3.6	261	100.0	7.2	234	100.0	21.4
Female Breast	Death Certificate or Autopsy Only	DSP	DSP	DSP	DSP	DSP	DSP	36	61.0	5.1
	All Other	DSP	DSP	DSP	DSP	DSP	DSP	23	39.0	3.2
	Total Unstaged	27	100.0	0.7	28	100.0	1.3	59	100.0	8.3
Prostate	Death Certificate or Autopsy Only	DSP	DSP	DSP	17	25.8	1.1	67	69.8	17.6
	All Other	DSP	DSP	DSP	49	74.2	3.2	29	30.2	7.6
	Total Unstaged	75	100.0	2.0	66	100.0	4.3	96	100.0	25.2
Urinary Bladder	Death Certificate or Autopsy Only	DSP	DSP	DSP	21	37.5	1.4	23	47.9	3.7
	All Other	DSP	DSP	DSP	35	62.5	2.3	25	52.1	4.0
	Total Unstaged	27	100.0	1.7	56	100.0	3.8	48	100.0	7.7
Pancreas	Death Certificate or Autopsy Only	22	55.0	2.9	36	54.5	6.0	59	54.6	19.3
	All Other	18	45.0	2.4	30	45.5	5.0	49	45.4	16.0
	Total Unstaged	40	100.0	5.3	66	100.0	11.0	108	100.0	35.3

Data Source: NAACCR Incidence Data - Cancer in North America (CiNA) Analytic File, 1995-2018, Public Use. Includes tumors with behaviors of benign, borderline malignancy, in situ, malignant, only malignant in ICD-O-3, no longer reportable in ICD-O-3 and only malignant 2010+. N: Number of new cancer cases (total across all years). DSP: Data suppressed to protect privacy.





The Department of Health and Human Services (“DHHS”) does not discriminate on the basis of disability, race, color, sex, gender, sexual orientation, age, national origin, religious or political belief, ancestry, familial or marital status, genetic information, association, previous assertion of a claim or right, or whistleblower activity, in admission or access to, or the operation of its policies, programs, services, or activities, or in hiring or employment practices. This notice is provided as required by and in accordance with Title II of the Americans with Disabilities Act of 1990 (“ADA”); Title VI of the Civil Rights Act of 1964, as amended; Section 504 of the Rehabilitation Act of 1973, as amended; Age Discrimination Act of 1975; Title IX of the Education Amendments of 1972; Section 1557 of the Affordable Care Act; the Maine Human Rights Act; Executive Order Regarding State of Maine Contracts for Services; and all other laws and regulations prohibiting such discrimination. Questions, concerns, complaints or requests for additional information regarding the ADA and *hiring or employment practices* may be forwarded to the DHHS ADA/EEO Coordinators at 11 State House Station, Augusta, Maine 04333-0011; 207-287-4289 (V); 207-287-1871(V); or Maine Relay 711 (TTY). Questions, concerns, complaints or requests for additional information regarding the ADA and *programs, services, or activities* may be forwarded to the DHHS ADA/Civil Rights Coordinator, at 11 State House Station, Augusta, Maine 04333-0011; 207-287-5014 (V); Maine Relay 711 (TTY); or [ADA-CivilRights.DHHS@maine.gov](mailto:ADA-CivilRights.DHHS@maine.gov). Civil rights complaints may also be filed with the U.S. Department of Health and Human Services, Office of Civil Rights, by phone at 800-368-1019 or 800-537-7697 (TDD); by mail to 200 Independence Avenue, SW, Room 509, HHS Building, Washington, D.C. 20201; or electronically at <https://ocrportal.hhs.gov/ocr/portal/lobby.jsf>. Individuals who need auxiliary aids for effective communication in program and services of DHHS are invited to make their needs and preferences known to the ADA/Civil Rights Coordinator. This notice is available in alternate formats, upon request.