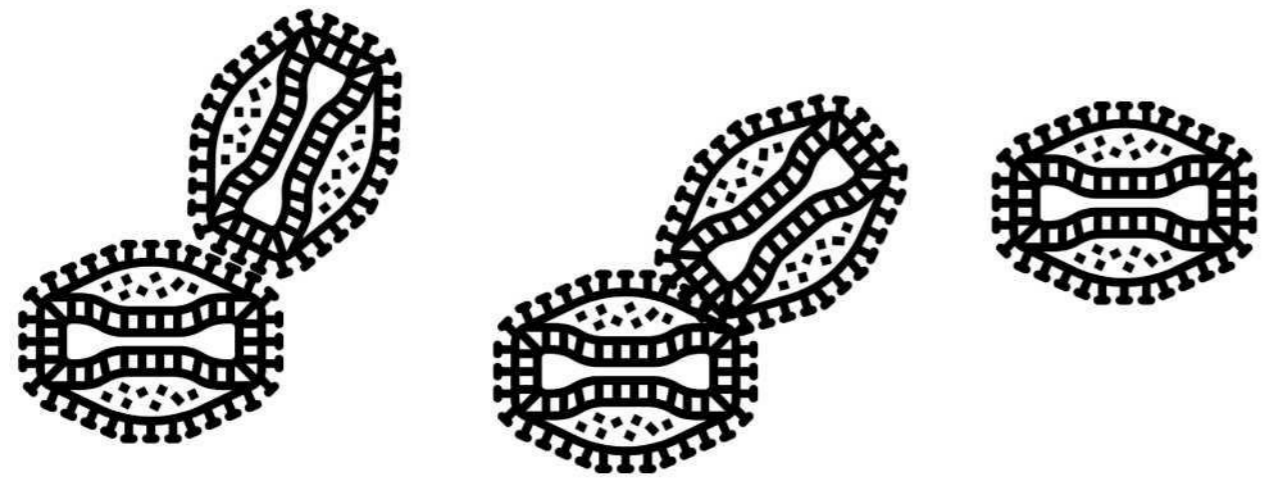
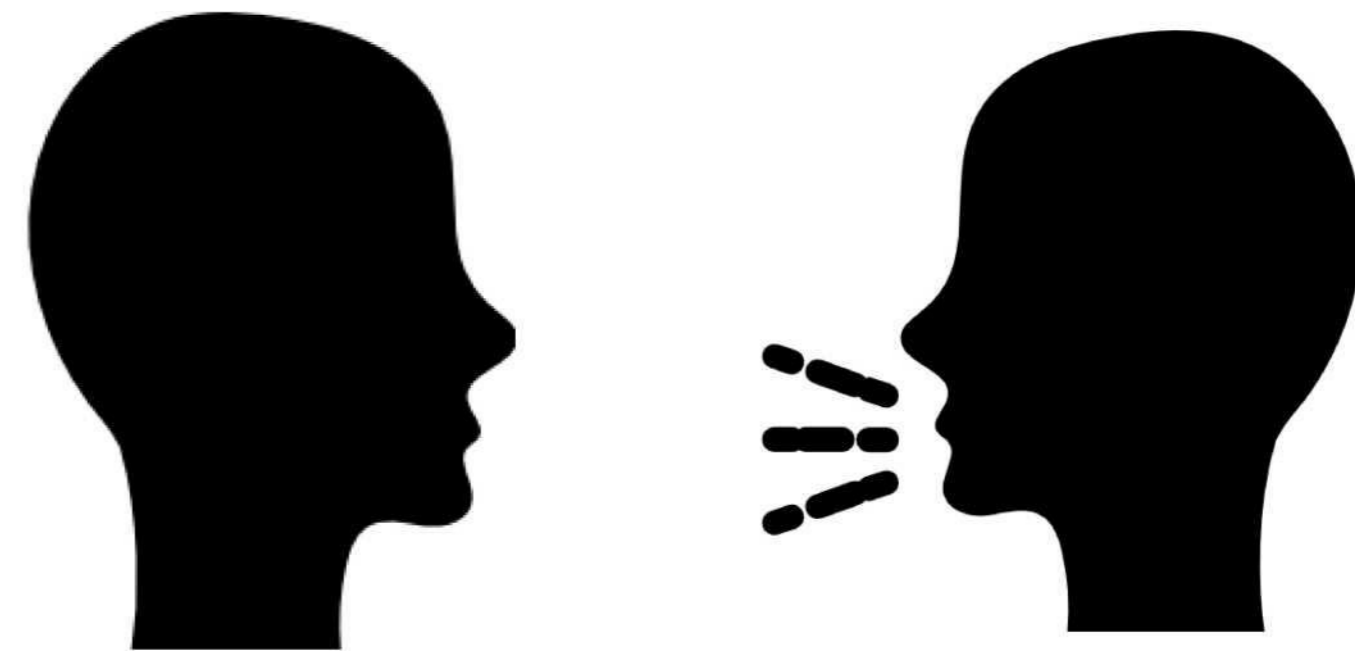


Varirole

Lokasa ya Makambo ya Bosolo



Varirole ezali bokono makasi oyo euti na virus ya varirole. Lokola bibongiseli ya mangwele elongaki, basilisaki varirole.



Epalanganaka na moto na moto, mbala mingi na kosukosu to kosala itie. Esalemaka mingi te, ete bato babelaka na kosimba mai oyo euti na bampota mpe bampota ya polele to na biloko oyo ezali na mikrobe lokola bilamba ya mbeto.

Bilembeteli mpe Bilembo



Fievre ya Makasi



Mutu mpe Nzoto Mpasi



Makwanza



Kosanza

Varirole ebandaka na fievre makasi, mutu mpe nzoto mpasi, mpe ntango mosusu kosanza. Makwanza ebimaka oyo epalanganaka na nzoto mobimba, mpe ekomaka baampoule minene mpe bampota etondi mafina. Nsima na yango ekomaka makasi, epasukaka, mpe ekweyaka ntango baposo misato ekoki. Nsima ya mwa baposo misato, ekotika mabulu nabisika oyo bampota bazalaki. Mbala mingi bilembo bimonanaka mikolo 17 kino 19 nsima ya koyamba virus na nzoto, na boumeli ya mikolo 10 kino 14.

Bopekisi & Bosalisi

- Kozwa mangwele ezali lolenge malamumu ya kopekisa varirole. Atako ezali mingi te, mangwele ekoki kopesama na ntango ya mbalakaka.
- Ezali na nkisi moko te oyo emonisami mpona bokono ya varirole. Bankisi misusu ekoki kosalisa mpona kosukisa to kopekisa yango ekoma makasi.



Mpona Koyeba Makambo Misusu



Benga monganga na yo to Centre ya Maine oyo Epekisaka Bokono mpe Elandelaka Yango na 1-800-821-5821 mpona koyeba makambo misusu.

Okoki mpe kokende na www.cdc.gov/smallpox.