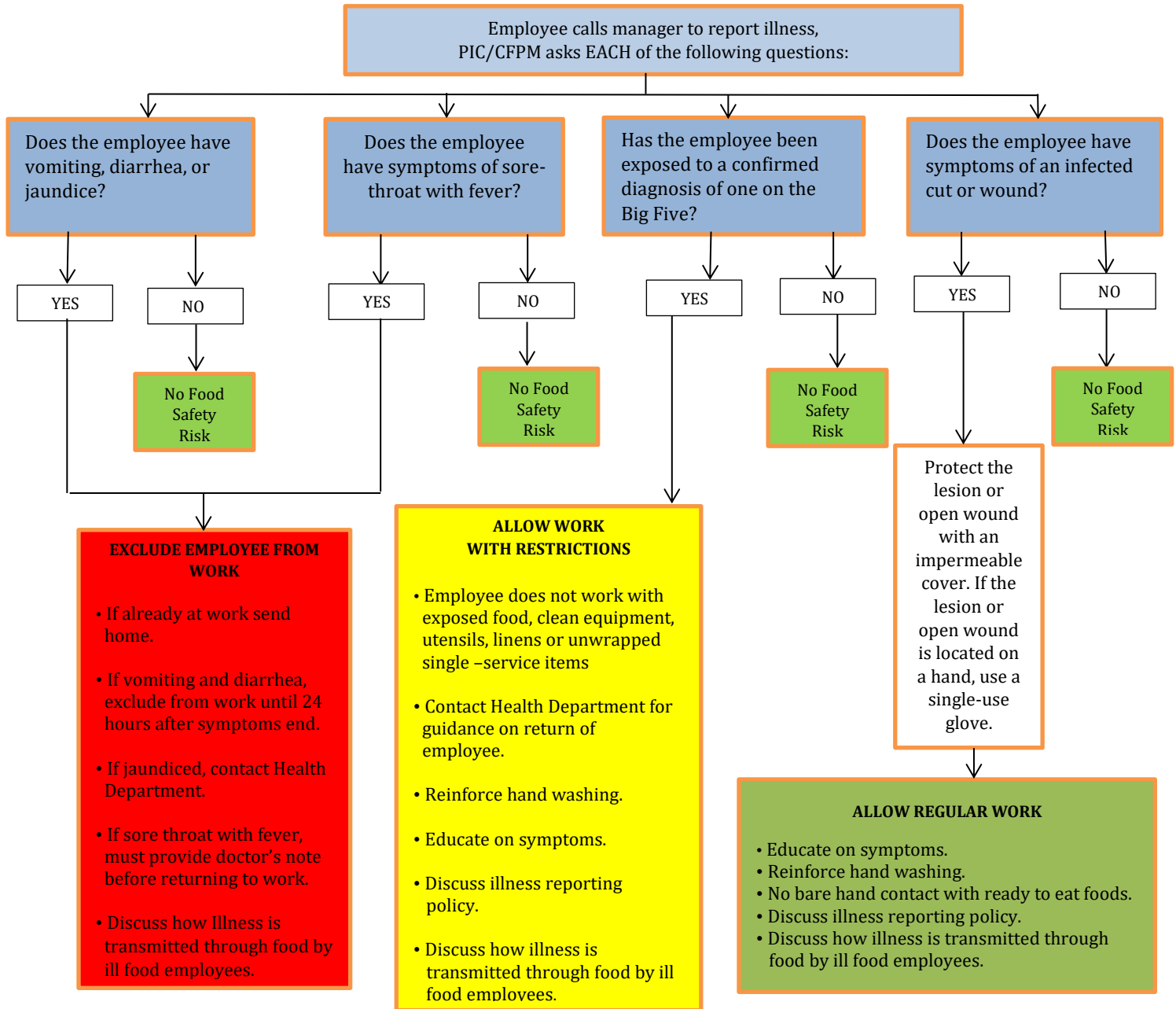


Maine CDC Health Inspection Program



Employee Illness Decision Guide for PIC/CFPM (HSP)

To be used for employees working with a **Highly Susceptible Population (HSP)** including hospital cafeterias, senior citizen meal sites and schools providing food for preschool programs. Use this flow chart to determine if an employee with an **undiagnosed** illness can spread the illness through food and should be restricted or excluded from work.



If a food employee reports a **diagnosis of Norovirus, Shiga toxin-producing E.Coli (STEC), Shigella, Hepatitis A virus, or Salmonella Typhi**, immediately exclude the employee and contact the Health Inspection Program at 207-287-5671 for guidance.

For more information see 2013 Maine Food Code

Check our Website maine.gov/healthinspection

Phone: 207-287-5671 Fax: 207-287-3165 TTY: Call Maine Relay 711



Revised 6-18-21