

Notes:
 1. Data Sources: Maine Office of GIS, Client
 2. Basemaps: Esri, DigitalGlobe, GeoEye, Earthstar Geographics, CNES/Airbus DS, USDA, USGS, AeroGRID, IGN, and the GIS User Community
 3. Projection: NAD83 UTM Zone 19

Legend:

Scenic Resource of State and National Significance

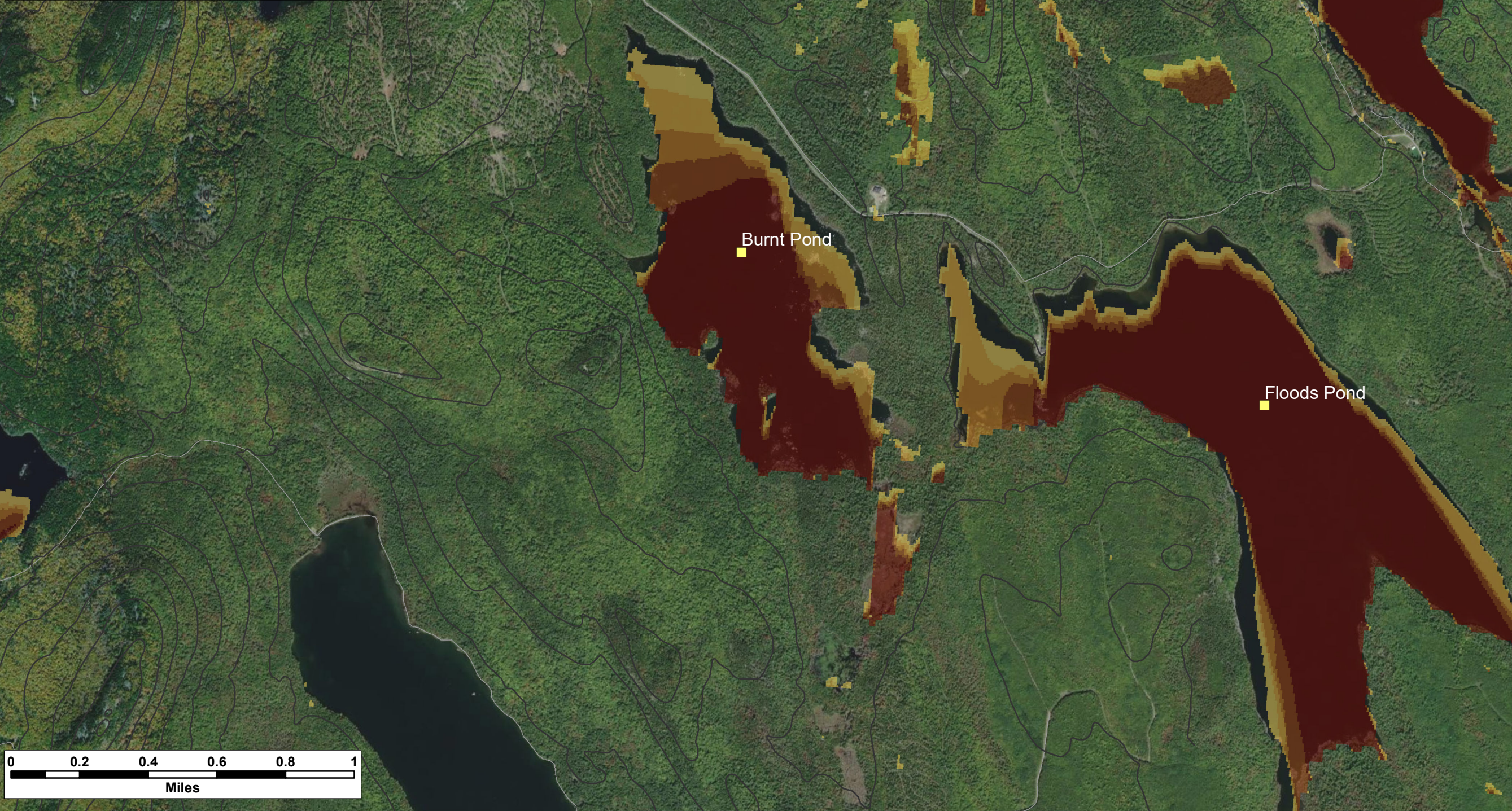
SRSNS

Elevation (100 ft)

Roads - NG911

Number of Visible Turbines

1
 2
 3
 4
 5



Silver Maple Wind Project - Viewshed
Burnt Pond
 (12 m or 40 ft Forest / 185 m total height)



Date: Dec. 2020	Project #: 19-6780
Scale: 1:20,000	Drawing #: M5
Drawn By: M. Marriott	
Checked By: S. Dickey	

