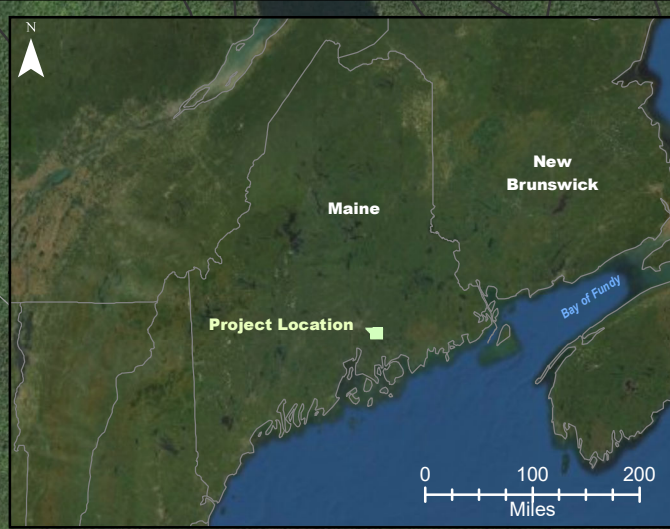


APPENDIX D  
MOUNTAIN POND

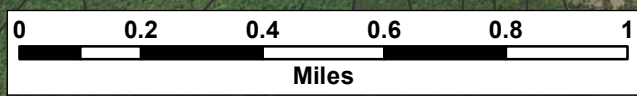
---



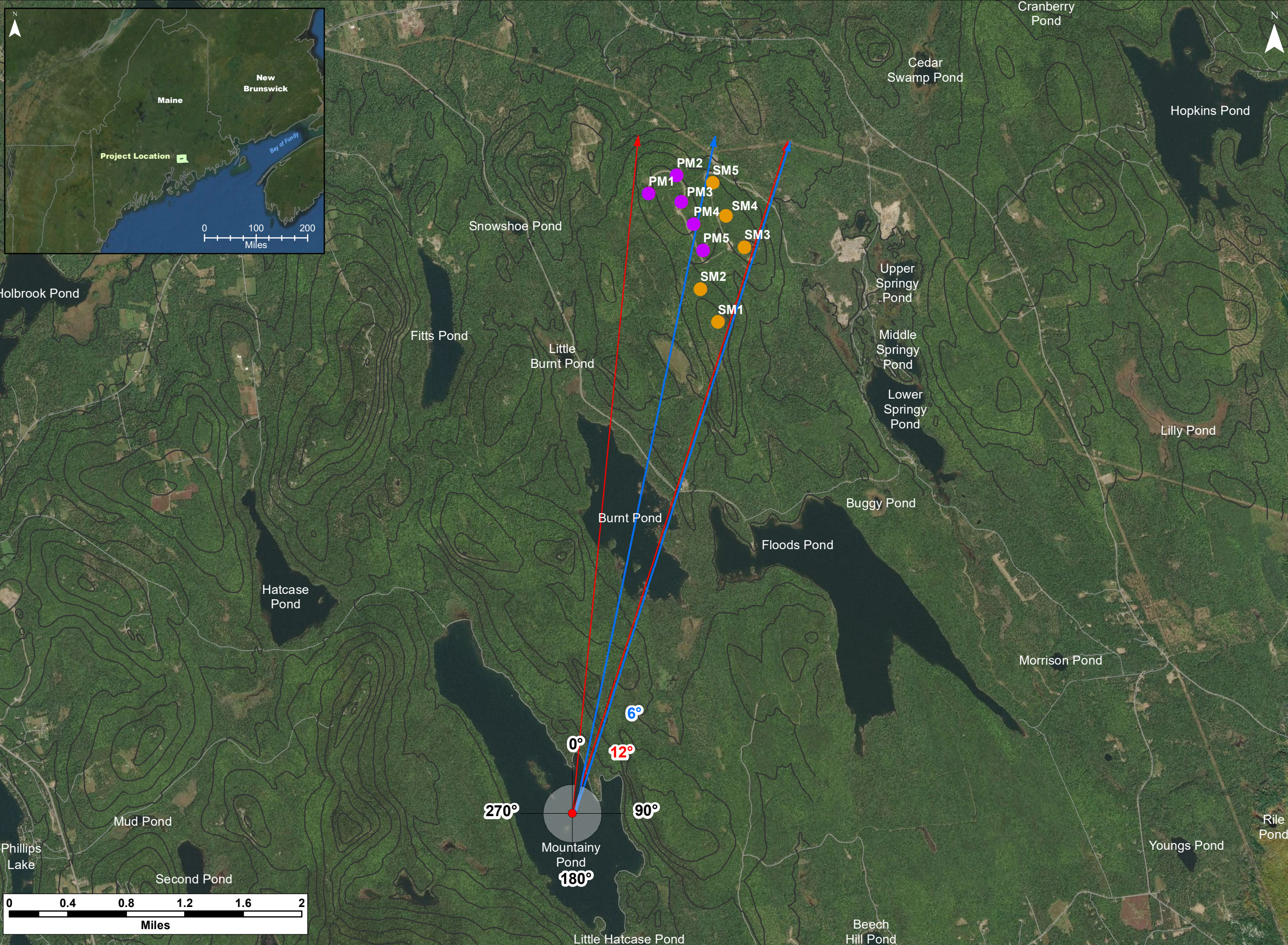
**Notes:**  
 1. Data Sources: Maine Office of GIS, Client  
 2. Basemaps: Esri, DigitalGlobe, GeoEye, Earthstar Geographics, CNES/Airbus DS, USDA, USGS, AeroGRID, IGN, and the GIS User Community  
 3. Projection: NAD83 UTM Zone 19

**Legend:**  
 — Elevation (100 ft)  
 — Roads - NG911

**Silver Maple Wind Project - Mountainy Pond Existing Character of Surrounding Area**



|                          |                         |
|--------------------------|-------------------------|
| Date:<br>April 2020      | Project #:<br>19-6780   |
| Scale:<br>1:20,000       | Drawing #:<br><b>D1</b> |
| Drawn By:<br>M. Savelle  |                         |
| Checked By:<br>S. Dickey |                         |



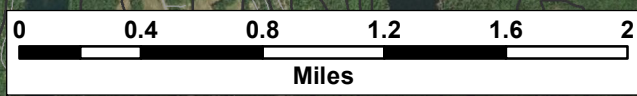
**Notes:**  
 1. Data Sources: Maine Office of GIS, Client  
 2. Basemaps: Esri, DigitalGlobe, GeoEye, Earthstar Geographics, CNES/Airbus DS, USDA, USGS, AeroGRID, IGN, and the GIS User Community  
 3. Projection: NAD83 UTM Zone 19

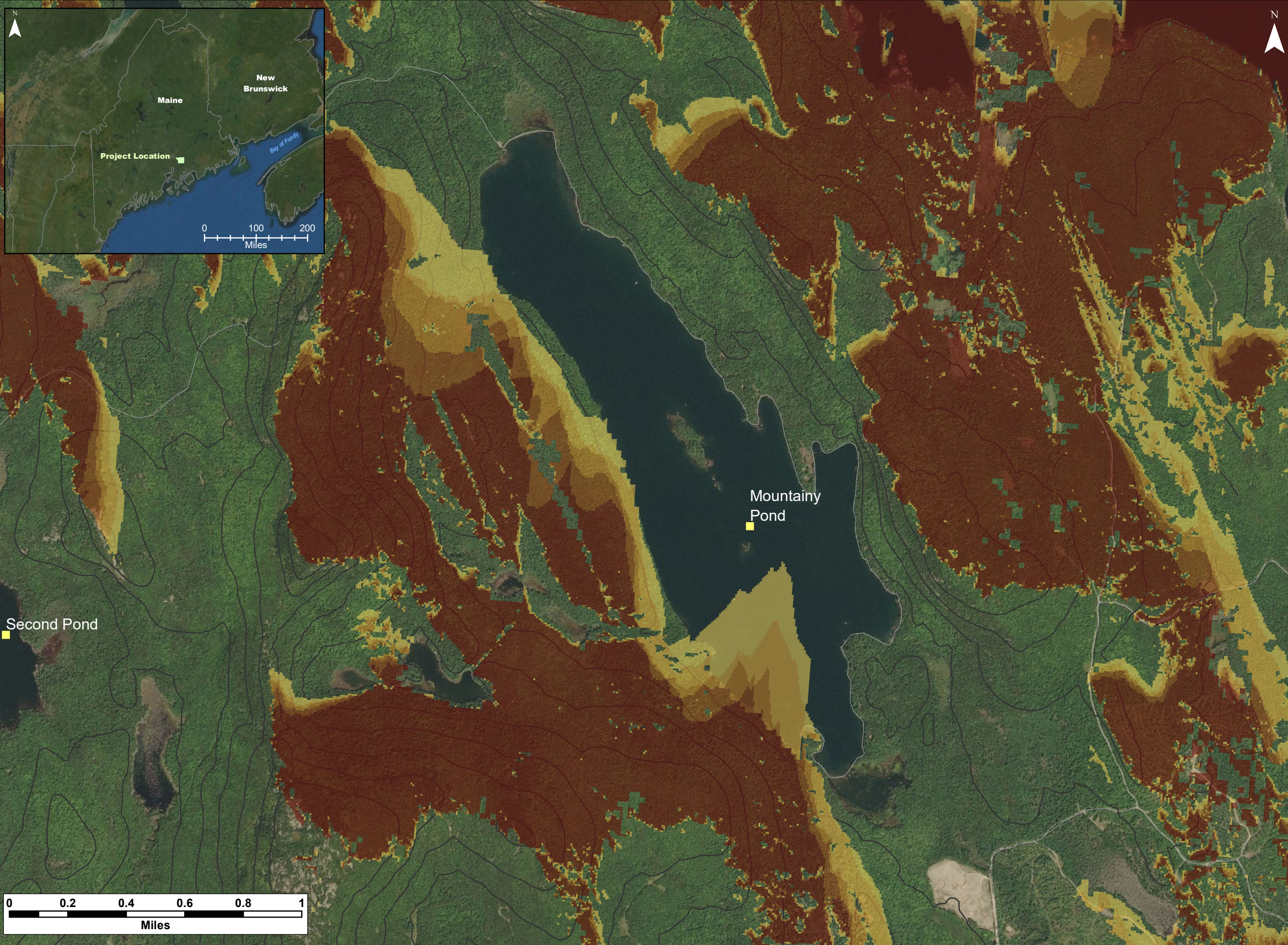
- Legend:**
- Pisgah Mountain Turbine (Existing)
  - Silver Maple Wind Turbine (Proposed)
  - Elevation (100 ft)
  - Roads - NG911
  - High Visual Impact Investigation Area
  - ↔ Horizontal View Angle - Silver Maple and Pisgah Mountain Turbines
  - ↔ Horizontal View Angle - Silver Maple Turbines

**Silver Maple Wind Project - Mountainay Pond Extent of View**



|             |            |
|-------------|------------|
| Date:       | Project #: |
| April 2020  | 19-6780    |
| Scale:      | Drawing #: |
| 1:40,000    | <b>D2</b>  |
| Drawn By:   |            |
| M. Savelle  |            |
| Checked By: |            |
| S. Dickey   |            |





**Notes:**

1. Data Sources: Maine Office of GIS, Client
2. Basemaps: Esri, DigitalGlobe, GeoEye, Earthstar Geographics, CNES/Airbus DS, USDA, USGS, AeroGRID, IGN, and the GIS User Community
3. Projection: NAD83 UTM Zone 19

**Legend:**

- Scenic Resource of State and National Significance
- SRSNS
- Elevation (100 ft)
- Roads - NG911

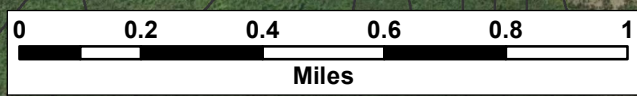
**Number of Visible Turbines**

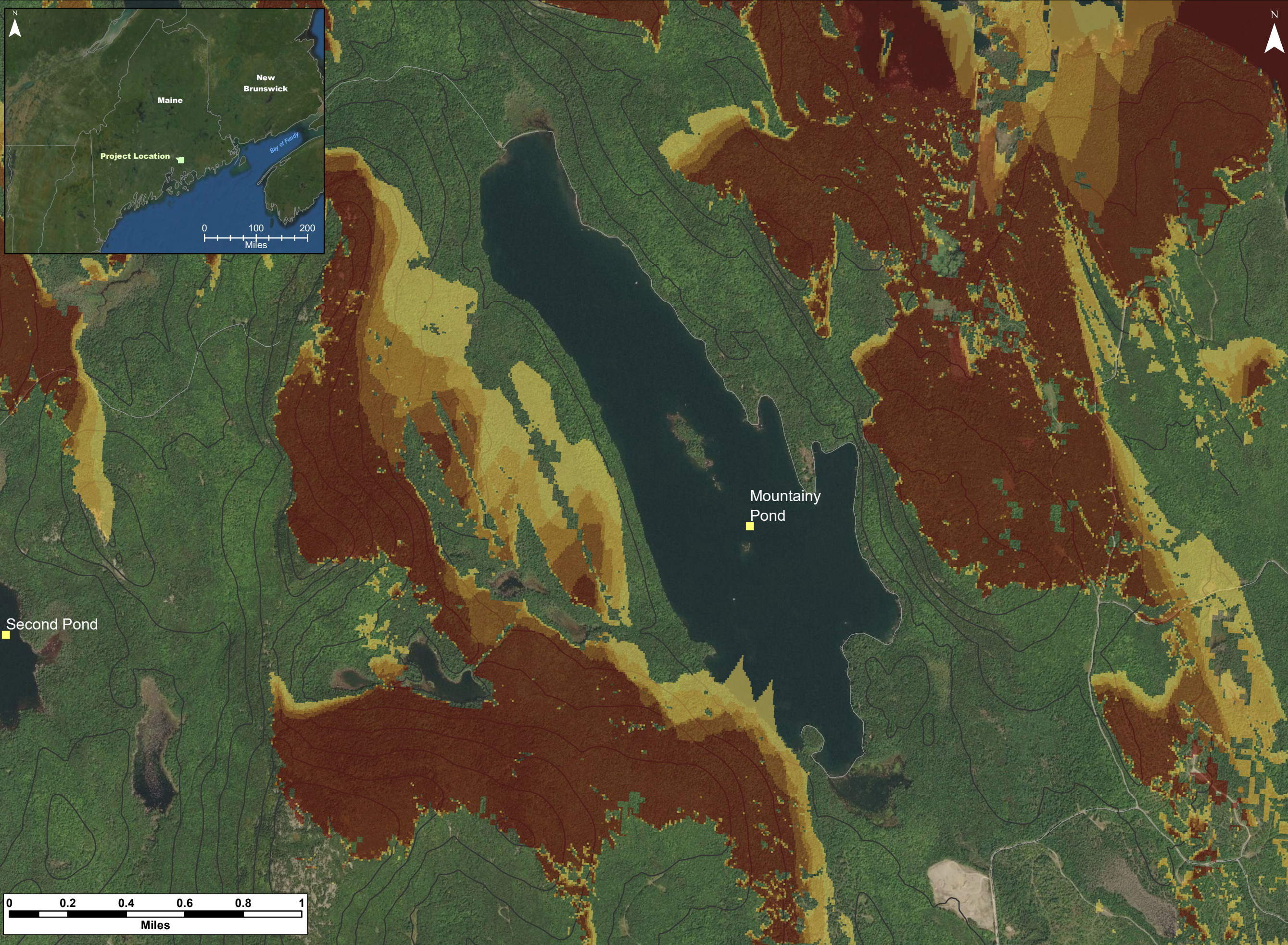
- 1
- 2
- 3
- 4
- 5

**Silver Maple Wind Project - Viewshed Mountainy Pond (Bare Ground / 185 m total height)**



|                          |                         |
|--------------------------|-------------------------|
| Date:<br>April 2020      | Project #:<br>19-6780   |
| Scale:<br>1:20,000       | Drawing #:<br><b>D3</b> |
| Drawn By:<br>M. Savelle  |                         |
| Checked By:<br>S. Dickey |                         |





**Notes:**  
 1. Data Sources: Maine Office of GIS, Client  
 2. Basemaps: Esri, DigitalGlobe, GeoEye, Earthstar Geographics, CNES/Airbus DS, USDA, USGS, AeroGRID, IGN, and the GIS User Community  
 3. Projection: NAD83 UTM Zone 19

**Legend:**

- SRSNS *Scenic Resource of State and National Significance*
- Elevation (100 ft)
- Roads - NG911

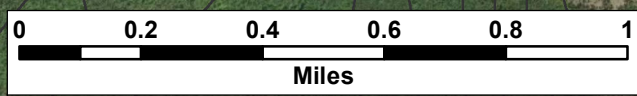
**Number of Visible Turbines**

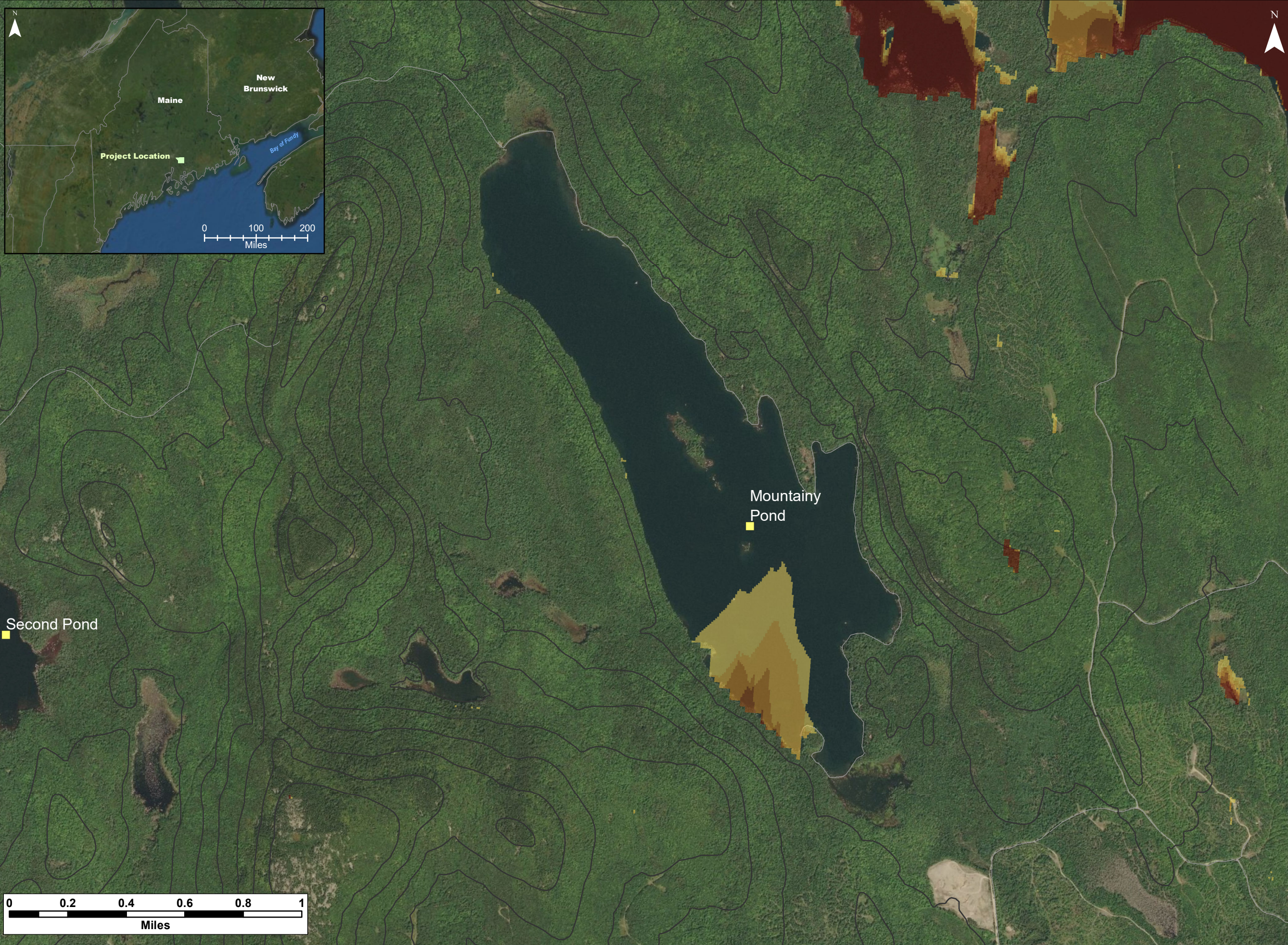
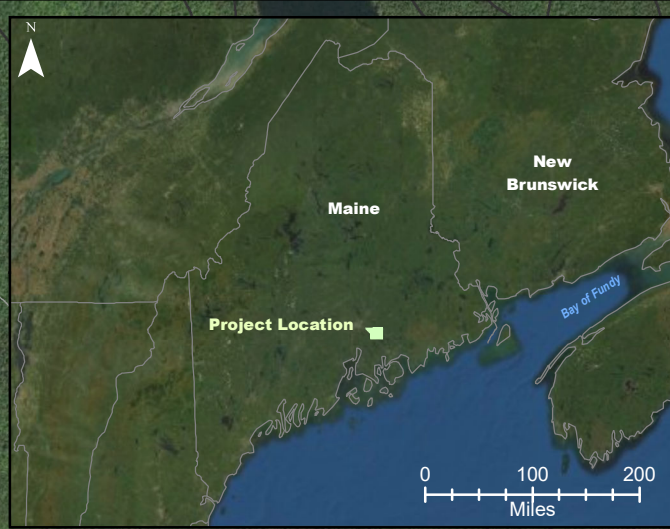
- 1
- 2
- 3
- 4
- 5

**Silver Maple Wind Project - Viewshed Mountainy Pond (Bare Ground / 117 m hub height)**



|                          |                             |
|--------------------------|-----------------------------|
| Date:<br>April 2020      | Project #:<br>19-6780       |
| Scale:<br>1:20,000       | Drawing #:<br><br><b>D4</b> |
| Drawn By:<br>M. Savelle  |                             |
| Checked By:<br>S. Dickey |                             |





**Notes:**  
 1. Data Sources: Maine Office of GIS, Client  
 2. Basemaps: Esri, DigitalGlobe, GeoEye, Earthstar Geographics, CNES/Airbus DS, USDA, USGS, AeroGRID, IGN, and the GIS User Community  
 3. Projection: NAD83 UTM Zone 19

**Legend:**

Scenic Resource of State and National Significance

■ SRSNS

— Elevation (100 ft)

— Roads - NG911

**Number of Visible Turbines**

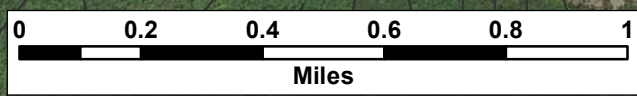
■ 1

■ 2

■ 3

■ 4

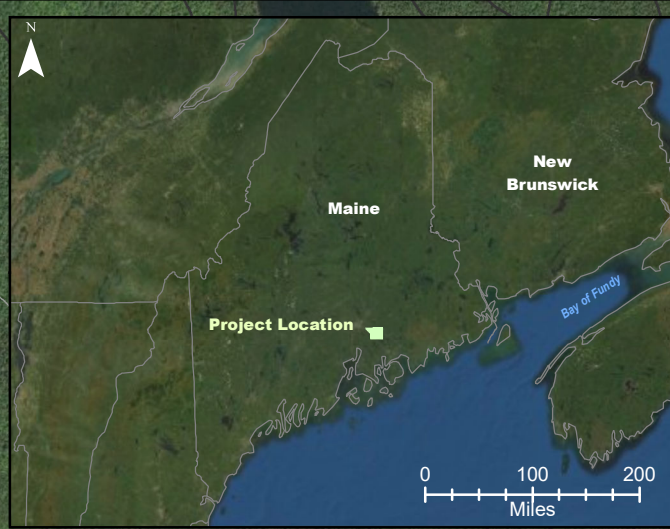
■ 5



**Silver Maple Wind Project - Viewshed Mountainy Pond**  
 (12 m or 40 ft Forest / 185 m total height)



|                          |                         |
|--------------------------|-------------------------|
| Date:<br>April 2020      | Project #:<br>19-6780   |
| Scale:<br>1:20,000       | Drawing #:<br><b>D5</b> |
| Drawn By:<br>M. Savelle  |                         |
| Checked By:<br>S. Dickey |                         |



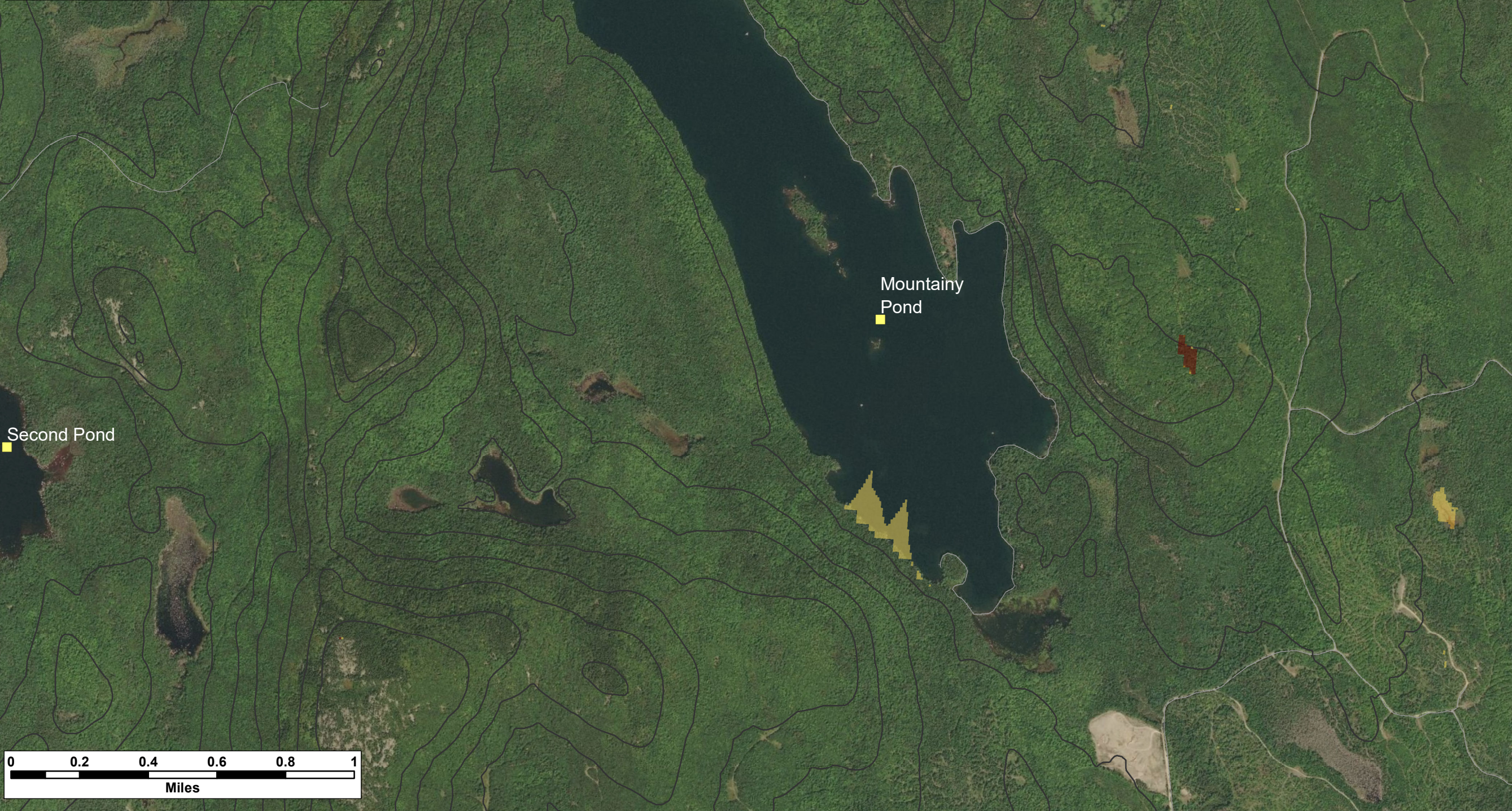
**Notes:**  
 1. Data Sources: Maine Office of GIS, Client  
 2. Basemaps: Esri, DigitalGlobe, GeoEye, Earthstar Geographics, CNES/Airbus DS, USDA, USGS, AeroGRID, IGN, and the GIS User Community  
 3. Projection: NAD83 UTM Zone 19

**Legend:**

- SRSNS *Scenic Resource of State and National Significance*
- Elevation (100 ft)
- Roads - NG911

**Number of Visible Turbines**

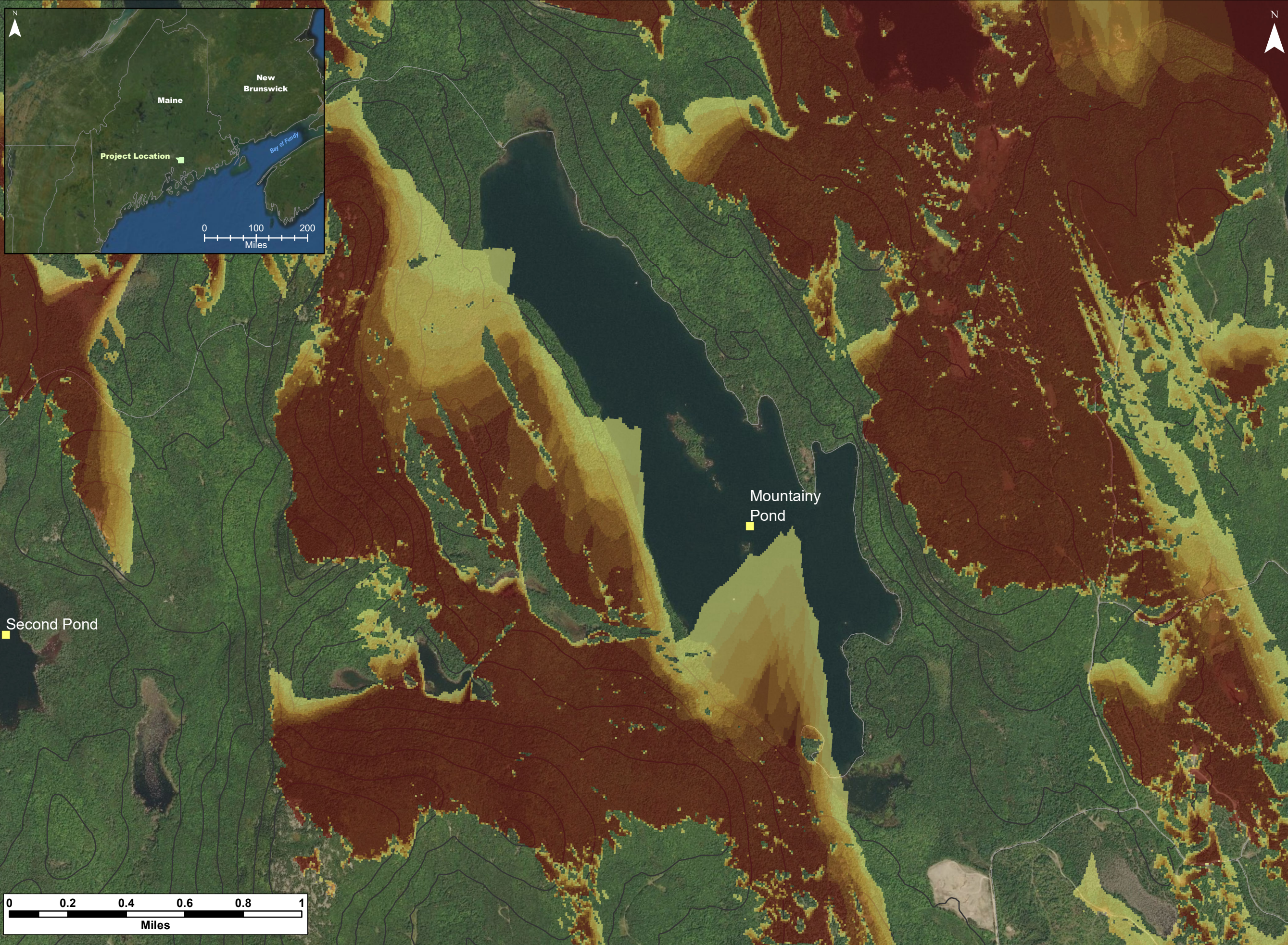
- 1
- 2
- 3
- 4
- 5



**Silver Maple Wind Project - Viewshed Mountainy Pond (12 m or 40 ft Forest / 117 m hub height)**



|                          |                             |
|--------------------------|-----------------------------|
| Date:<br>April 2020      | Project #:<br>19-6780       |
| Scale:<br>1:20,000       | Drawing #:<br><br><b>D6</b> |
| Drawn By:<br>M. Savelle  |                             |
| Checked By:<br>S. Dickey |                             |



**Notes:**  
 1. Data Sources: Maine Office of GIS, Client  
 2. Basemaps: Esri, DigitalGlobe, GeoEye, Earthstar Geographics, CNES/Airbus DS, USDA, USGS, AeroGRID, IGN, and the GIS User Community  
 3. Projection: NAD83 UTM Zone 19

**Legend:**  
 Scenic Resource of State and National Significance  
 SRSNS  
 Elevation (100 ft)  
 Roads - NG911

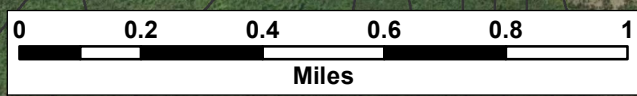
**Number of Visible Turbines**

|    |
|----|
| 1  |
| 2  |
| 3  |
| 4  |
| 5  |
| 6  |
| 7  |
| 8  |
| 9  |
| 10 |

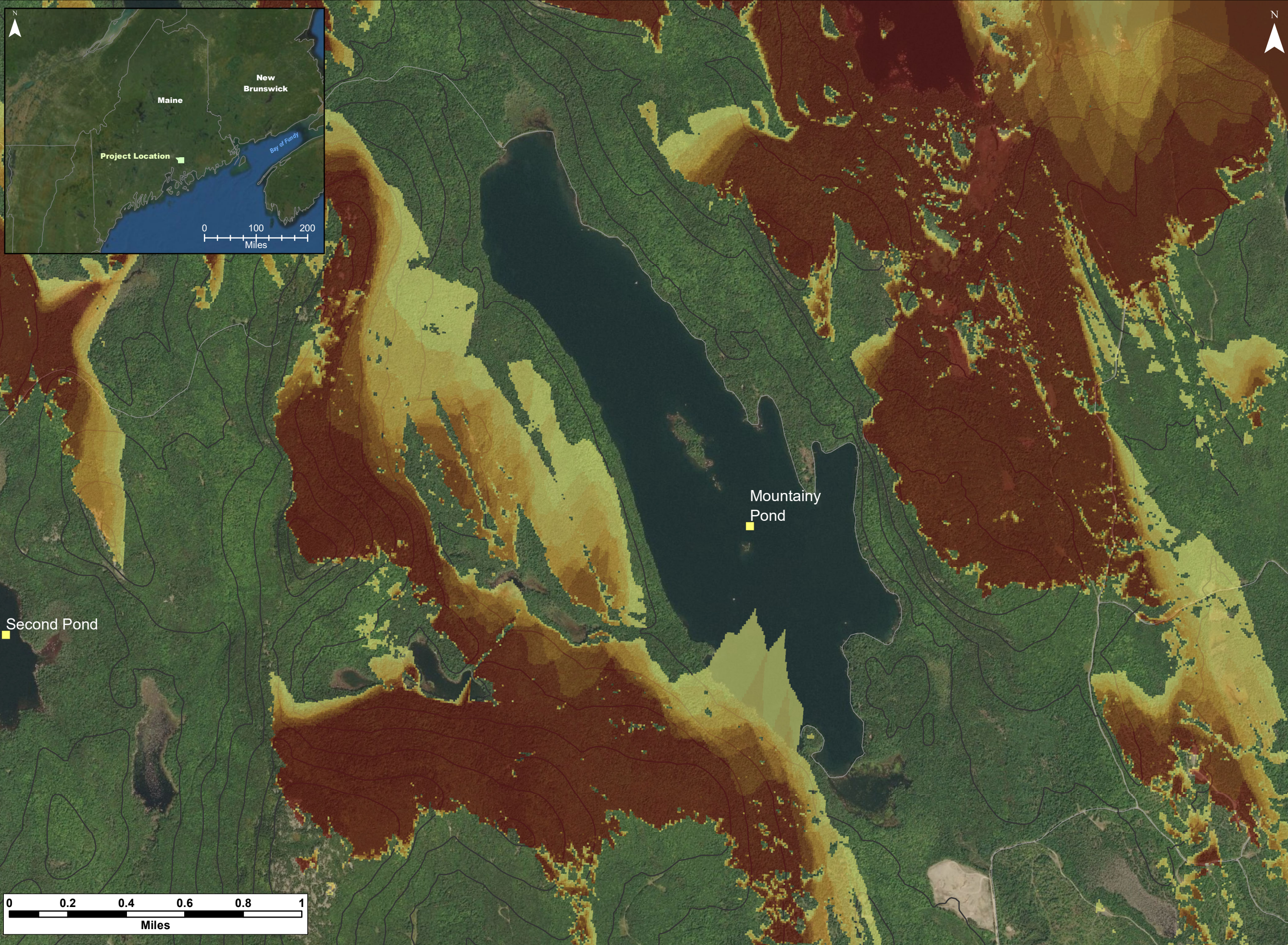
**Cumulative Impacts - Silver Maple Wind Project and Pisgah Mountain Wind Project - Viewshed Mountainy Pond (Bare Ground / 185 m & 145 m total heights)**



|                          |                         |
|--------------------------|-------------------------|
| Date:<br>April 2020      | Project #:<br>19-6780   |
| Scale:<br>1:20,000       | Drawing #:<br><b>D7</b> |
| Drawn By:<br>M. Savelle  |                         |
| Checked By:<br>S. Dickey |                         |







**Notes:**  
 1. Data Sources: Maine Office of GIS, Client  
 2. Basemaps: Esri, DigitalGlobe, GeoEye, Earthstar Geographics, CNES/Airbus DS, USDA, USGS, AeroGRID, IGN, and the GIS User Community  
 3. Projection: NAD83 UTM Zone 19

**Legend:**  
 Scenic Resource of State and National Significance  
 — Elevation (100 ft)  
 — Roads - NG911

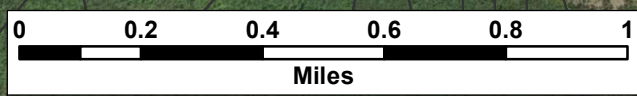
**Number of Visible Turbines**

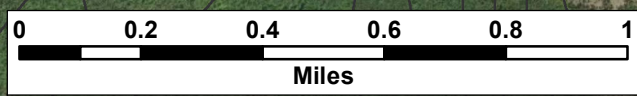
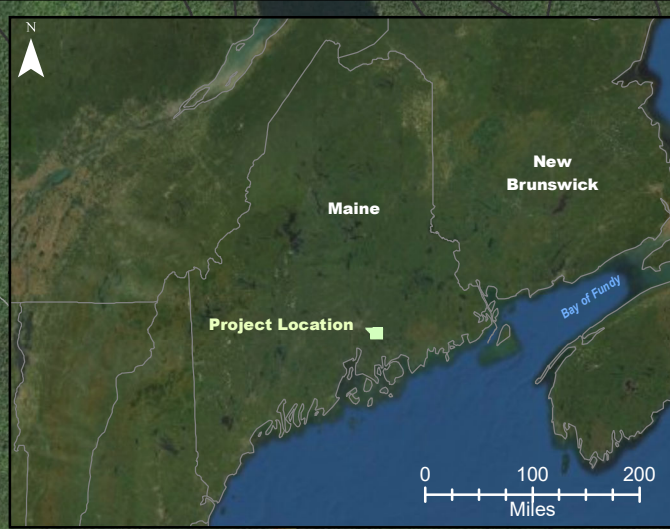
|    |
|----|
| 1  |
| 2  |
| 3  |
| 4  |
| 5  |
| 6  |
| 7  |
| 8  |
| 9  |
| 10 |

**Cumulative Impacts - Silver Maple Wind Project and Pisgah Mountain Wind Project - Viewshed Mountainy Pond (Bare Ground / 117 m & 95 m hub heights)**



|                          |                             |
|--------------------------|-----------------------------|
| Date:<br>April 2020      | Project #:<br>19-6780       |
| Scale:<br>1:20,000       | Drawing #:<br><br><b>D8</b> |
| Drawn By:<br>M. Savelle  |                             |
| Checked By:<br>S. Dickey |                             |





**Notes:**  
 1. Data Sources: Maine Office of GIS, Client  
 2. Basemaps: Esri, DigitalGlobe, GeoEye, Earthstar Geographics, CNES/Airbus DS, USDA, USGS, AeroGRID, IGN, and the GIS User Community  
 3. Projection: NAD83 UTM Zone 19

**Legend:**  
 Scenic Resource of State and National Significance  
 SRSNS  
 Elevation (100 ft)  
 Roads - NG911

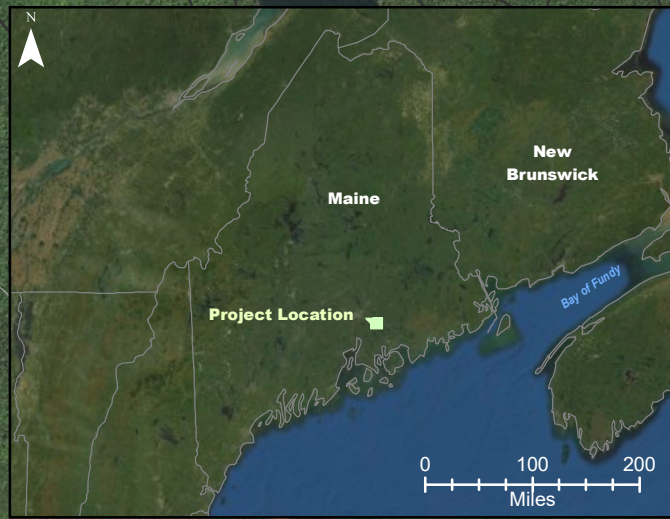
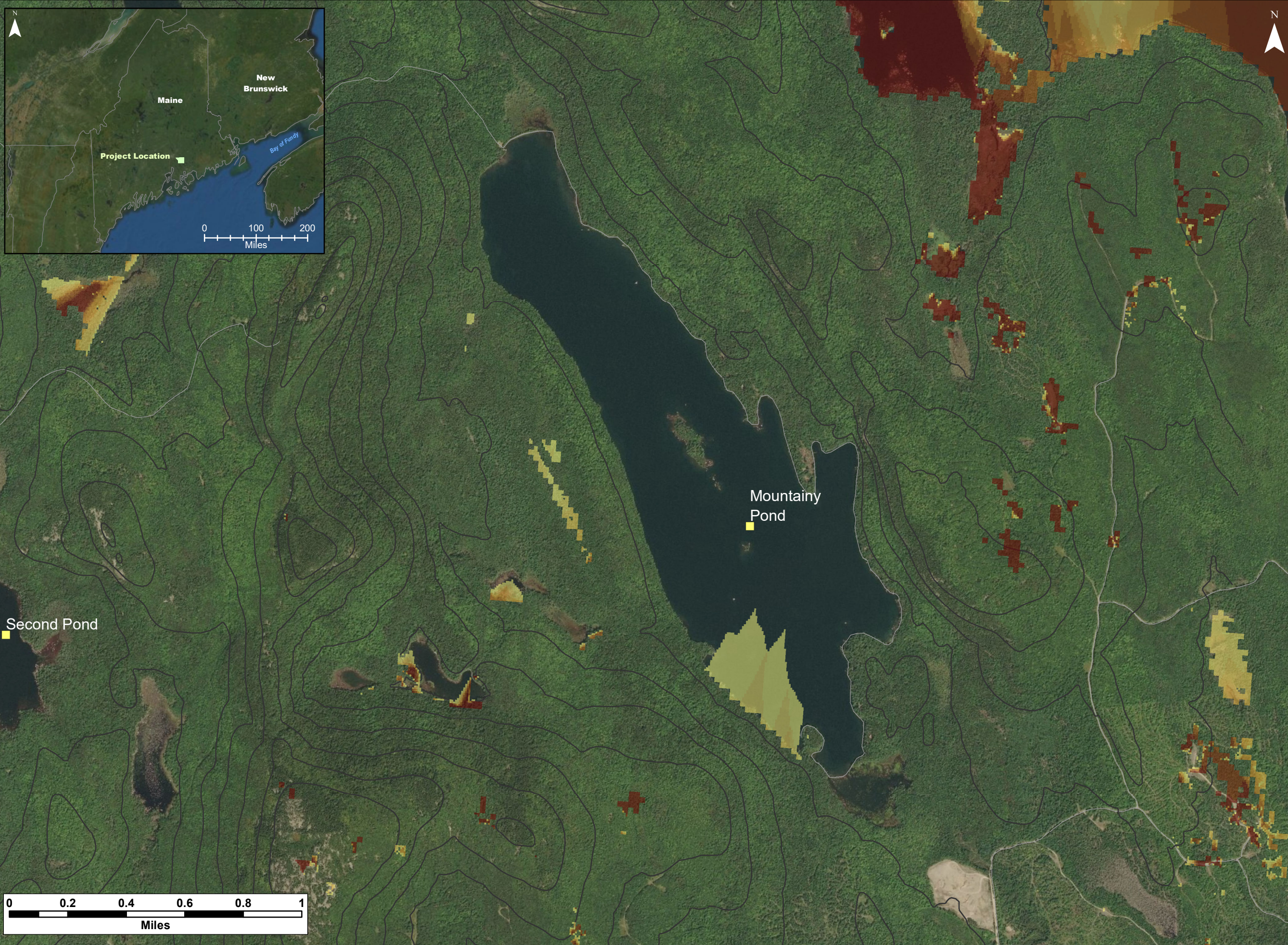
**Number of Visible Turbines**

|    |
|----|
| 1  |
| 2  |
| 3  |
| 4  |
| 5  |
| 6  |
| 7  |
| 8  |
| 9  |
| 10 |

**Cumulative Impacts - Silver Maple Wind Project and Pisgah Mountain Wind Project - Viewshed Mountainy Pond (12 m or 40ft Forest) / 185 m & 145 m total heights)**



|                          |                         |
|--------------------------|-------------------------|
| Date:<br>April 2020      | Project #:<br>19-6780   |
| Scale:<br>1:20,000       | Drawing #:<br><b>D9</b> |
| Drawn By:<br>M. Savelle  |                         |
| Checked By:<br>S. Dickey |                         |



**Notes:**  
 1. Data Sources: Maine Office of GIS, Client  
 2. Basemaps: Esri, DigitalGlobe, GeoEye, Earthstar Geographics, CNES/Airbus DS, USDA, USGS, AeroGRID, IGN, and the GIS User Community  
 3. Projection: NAD83 UTM Zone 19

**Legend:**  
 Scenic Resource of State and National Significance  
 SRSNS  
 Elevation (100 ft)  
 Roads - NG911

**Number of Visible Turbines**

|    |
|----|
| 1  |
| 2  |
| 3  |
| 4  |
| 5  |
| 6  |
| 7  |
| 8  |
| 9  |
| 10 |

**Cumulative Impacts - Silver Maple Wind Project and Pisgah Mountain Wind Project - Viewshed Mountain Pond (12 m or 40ft Forest) / 117 m & 95 m hub heights)**



|                          |                          |
|--------------------------|--------------------------|
| Date:<br>April 2020      | Project #:<br>19-6780    |
| Scale:<br>1:20,000       | Drawing #:<br><b>D10</b> |
| Drawn By:<br>M. Savelle  |                          |
| Checked By:<br>S. Dickey |                          |

