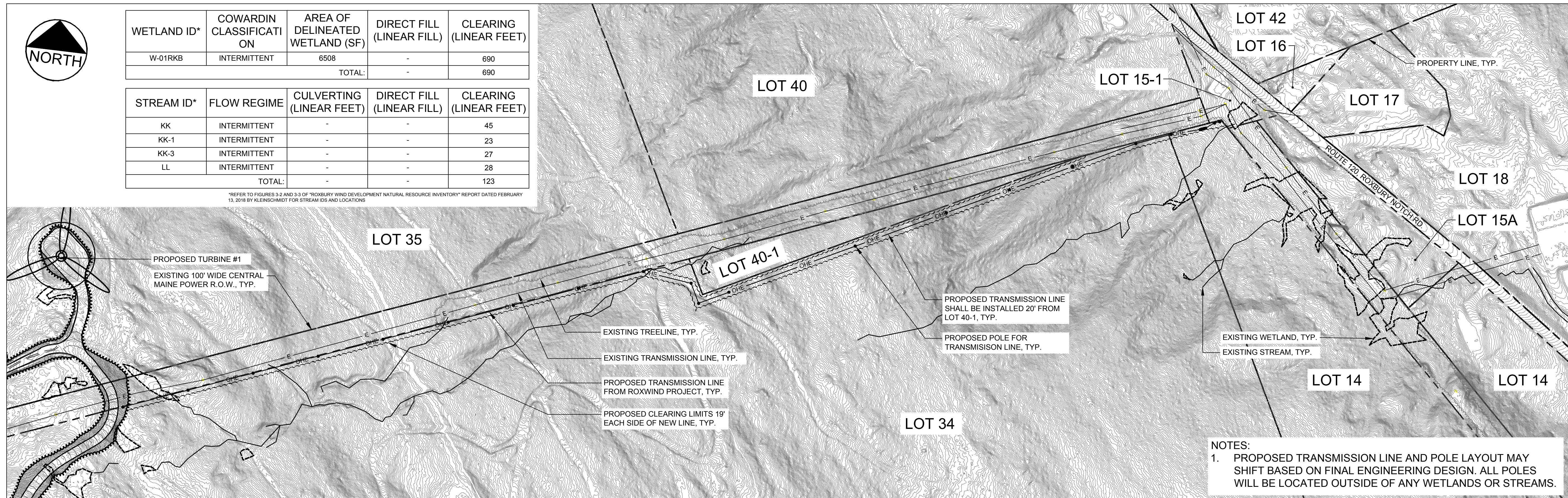




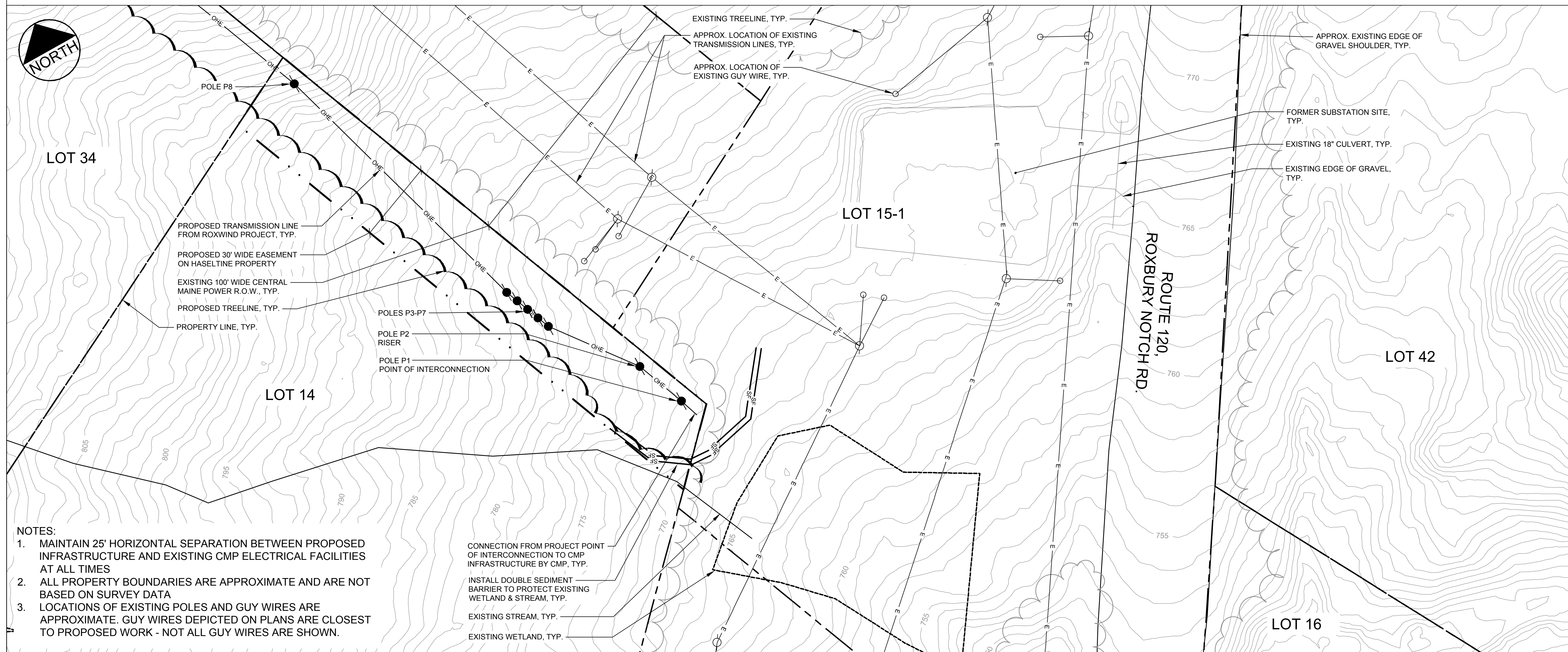
WETLAND ID*	COWARDIN CLASSIFICATION	AREA OF DELINEATED WETLAND (SF)	DIRECT FILL (LINEAR FEET)	CLEARING (LINEAR FEET)
W-01RKB	INTERMITTENT	6508	-	690
TOTAL:			-	690

STREAM ID*	FLOW REGIME	CULVERTING (LINEAR FEET)	DIRECT FILL (LINEAR FEET)	CLEARING (LINEAR FEET)
KK	INTERMITTENT	-	-	45
KK-1	INTERMITTENT	-	-	23
KK-3	INTERMITTENT	-	-	27
LL	INTERMITTENT	-	-	28
TOTAL:			-	123

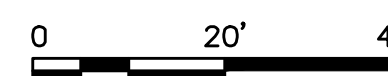
*REFER TO FIGURES 3.2 AND 3.3 OF "ROXBURY WIND DEVELOPMENT NATURAL RESOURCE INVENTORY" REPORT DATED FEBRUARY 13, 2018 BY KLEINSCHMIDT FOR STREAM IDS AND LOCATIONS



PLAN VIEW 1
SCALE: 1"=200'



PLAN VIEW 2
SCALE: 1"=20'



- NOTES:
1. MAINTAIN 25' HORIZONTAL SEPARATION BETWEEN PROPOSED INFRASTRUCTURE AND EXISTING CMP ELECTRICAL FACILITIES AT ALL TIMES
 2. ALL PROPERTY BOUNDARIES ARE APPROXIMATE AND ARE NOT BASED ON SURVEY DATA
 3. LOCATIONS OF EXISTING POLES AND GUY WIRES ARE APPROXIMATE. GUY WIRES DEPICTED ON PLANS ARE CLOSEST TO PROPOSED WORK - NOT ALL GUY WIRES ARE SHOWN.

- CONNECTION FROM PROJECT POINT OF INTERCONNECTION TO CMP INFRASTRUCTURE BY CMP, TYP.
- INSTALL DOUBLE SEDIMENT BARRIER TO PROTECT EXISTING WETLAND & STREAM, TYP.
- EXISTING STREAM, TYP.
- EXISTING WETLAND, TYP.

NOTES:
1. PROPOSED TRANSMISSION LINE AND POLE LAYOUT MAY SHIFT BASED ON FINAL ENGINEERING DESIGN. ALL POLES WILL BE LOCATED OUTSIDE OF ANY WETLANDS OR STREAMS.



Stantec
482 Payne Road Scarborough Court
Scarborough, Maine 04074-8929
207.883.3355

Copyright Reserved
The Contractor shall verify and be responsible for all dimensions. DO NOT scale the drawing - any errors or omissions shall be reported to Stantec without delay.
The Copyrights to all designs and drawings are the property of Stantec. Reproduction or use for any purpose other than that authorized by Stantec is forbidden.



Relationships. Responsiveness. Results.
www.gorrillpalmer.com
207.772.2515

Legend

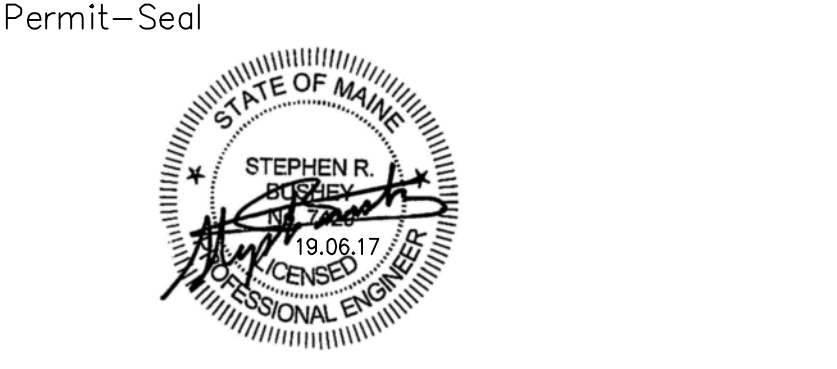
Notes

1. OVERHEAD TRANSMISSION LINE DESIGN AS REPRESENTED ON THIS DRAWING IS FOR PERMITTING ONLY AND IS SUBJECT TO FINAL DESIGN BY THE SELECTED EPC CONTRACTOR

Revision	By	Appd.	YY.MM.DD

TRANSMISSION LINE PLANS FOR REVIEW	KAB	SRB	19.06.17
Issued	By	Appd.	YY.MM.DD

File Name: 01220C-301_PP-2
P.E. STEPHEN R. BUSHEY
KAB
Dwn.
SRB
Chkd.
KAB
Dsgn.
19.06.03
YY.MM.DD



Client/Project
ROXWIND LLC

ROXBURY WIND PROJECT

ROXBURY TOWNSHIP, MAINE

Title
TRANSMISSION LINE LAYOUT PLAN

Project No.	Scale	
3583	AS NOTED	
Drawing No.	Sheet	Revision
C-T2.0	2 of 2	