

REV	DESCRIPTION	DATE
0	ISSUED FOR PERMIT	5-14-19

ISSUED FOR PERMIT
5-14-19

TRUE NORTH:

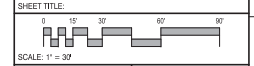
STATE OF MAINE
ROBERT B. BRINK
LICENSED PROFESSIONAL ENGINEER
05/12/19

SMRT Architects and Engineers
144 Fore Street P.O. BOX 618
Portland, Maine 04104
1.877.700.7678
www.smrtinc.com

RANSOM Consulting Engineers and Scientists
Ransom Consulting Engineers and Scientists
400 Commercial Street, Suite 400
Portland, Maine 04103

NORDIC AQUAFARMS
285 NORTHPORT AVENUE

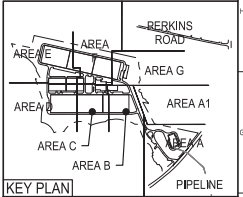
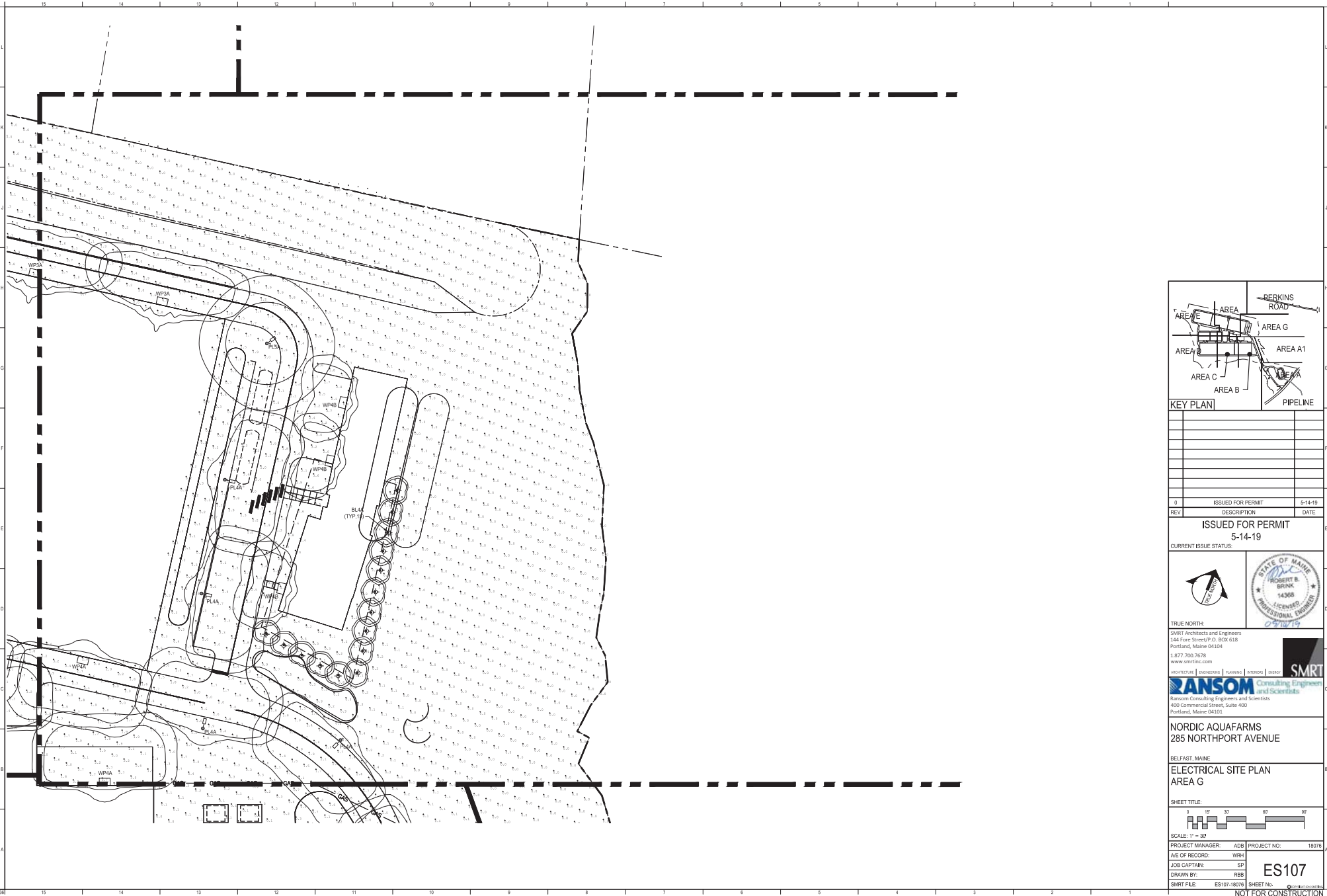
BELFAST, MAINE
ELECTRICAL SITE PLAN
AREA F



PROJECT MANAGER:	ADB	PROJECT NO.:	18076
A/E OF RECORD:	MGJ		
JOB CAPTAIN:	SP		
DRAWN BY:	WSM		
SMRT FILE:	ES106-18076	SHEET No.:	02

ES106

NOT FOR CONSTRUCTION



REV	DESCRIPTION	DATE
0	ISSUED FOR PERMIT	5-14-19

ISSUED FOR PERMIT
5-14-19

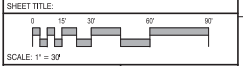


TRUE NORTH:
SMRT Architects and Engineers
144 Fore Street P.O. BOX 618
Portland, Maine 04104
1.877.700.7678
www.smrtinc.com



NORDIC AQUAFARMS
285 NORTHPORT AVENUE
BELFAST, MAINE

ELECTRICAL SITE PLAN
AREA G



PROJECT MANAGER:	ADB	PROJECT NO.:	18076
A/E OF RECORD:	WRH		
JOB CAPTAIN:	SP		
DRAWN BY:	RBB		
SMRT FILE:	ES107-18076	SHEET No.:	ES107

NOT FOR CONSTRUCTION

Nordic Aquafarms - Permitting

Electrical General:

Electrical systems for all new spaces will be designed in accordance with the following Codes and standards:

- NFPA 70 (National Electrical Code), 2017 Edition
- NFPA 101 (Life Safety Code)
- International Building Code (IBC), 2009 edition.
- International Energy Conservation Code (IECC), 2012 edition.
- Maine Uniform Building and Energy Code (MUBEC)
- ASHRAE Standard 90.1-2010 Energy Standard for Buildings Except Low-Rise Residential Buildings.

Exterior Lighting and Controls:

All new fixtures shall utilize LED technology with a color temperature of 3000K and shall be full-cutoff type as defined by IESNA, in order to minimize light pollution into the night sky.

Lighting along the entrance drive into the campus (near the Visitor's Center) shall be provided via post-top style mounted pole light fixtures. Fixtures shall be mounted roughly 16'-0" AFG and shall utilize Type IV distribution. Lighting shall be controlled via a site-wide lighting control system with main controller location to be determined during detailed design. Lighting control system shall be utilized to provide astronomical clock on/off operation and to allow for schedule overrides to be programmed. Post-top fixtures shall be provided with integrated motion sensors to allow fixtures to dim to 10% between the hours of 10pm-5am until motion is sensed. Once motion is sensed during the setback hours, the fixtures will rise to 100% output for 15 minutes and then they shall dim back to 10% output.

Also located near the Visitor's Center, the walkway surrounding the salmon pond feature will be illuminated utilizing 3'H bollards. This will allow for low lighting levels along the pathway with minimal impact to the overall lighting provided by the general fixtures. Bollard lights shall be connected to the site-wide lighting control system and shall be scheduled on and off to coordinate with operational hours.

General site lighting along interior roadways shall be provided via pole mounted area style fixtures. Fixtures shall be mounted at 20'-0" AFG with Type III, Type IV, and Type V distribution patterns as required to adequately illuminate the drives and intersections. Controls for all roadway fixtures shall be via site-wide lighting control system as described above. As with the post-top fixtures, roadway lights shall have integrated occupancy sensors to allow for setback during nighttime hours.

Roadways and parking lots located between buildings shall be illuminated via building mounted area style light fixtures. Fixtures shall be mounted at ~~16'-0"~~ **20' 0"** AFG with Type IV distribution patterns as required to adequately illuminate individual spaces as well as the associated roadways. Controls for all building mounted fixtures interior to the site shall be via site-wide lighting control system as described above. As with the pole mounted fixtures, building lights shall have integrated occupancy sensors to allow for setback during nighttime hours.

Nordic Aquafarms - Permitting

Along the north and west sides of Building 1, south and west sides of Building 2 and west side of Building 3, building mounted area style fixtures shall be mounted at ~~12'-0"~~ **20' 0"** AFF to illuminate the access drive around buildings. Fixtures along these facades shall be provided with embedded motion sensors so that fixtures will remain off during nighttime hours until motion is sensed.

In addition to roadway and parking lot lighting, Building 7 shall have bollard lighting is accent the concrete walkway and plaza to the entrance of the building. Bollard lights will be 3'-0" AFG and shall be controlled via the site-wide lighting control system. As with the bollards located near the Visitor's Center, operation is expected to be schedule on/off only.

ATTACHMENT I

Revised Figure 1 Showing Section Profiles

Additional Information Regarding

Nordic Aquafarms Inc., Land-based Aquaculture Facility

Belfast, Maine

L-28319-26-A-N

Ransom Consulting, Inc.

Project 171.05027.008

Figure 1a



Nordic Aquafarms
Belfast, Maine

LOCUS MAP - OFF-SITE

PENOBSCOT BAY VIEW



ATTACHMENT J

Visual Impact Analysis Views from Penobscot Bay

Additional Information Regarding

Nordic Aquafarms Inc., Land-based Aquaculture Facility

Belfast, Maine

L-28319-26-A-N



Figure 19

Nordic Aquafarms
Belfast, Maine

**PENOBSCOT BAY VIEW
(ELEVATION 10' +/-)**

SMRT Project No. 18076



Figure 20



**PENOBSCOT BAY VIEW
(ELEVATION 48' +/-)**

Nordic Aquafarms
Belfast, Maine

SMRT Project No. 18076



ATTACHMENT K

Revised Plan LP101

Additional Information Regarding

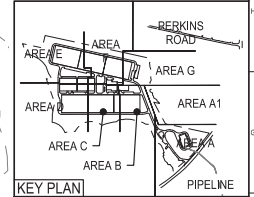
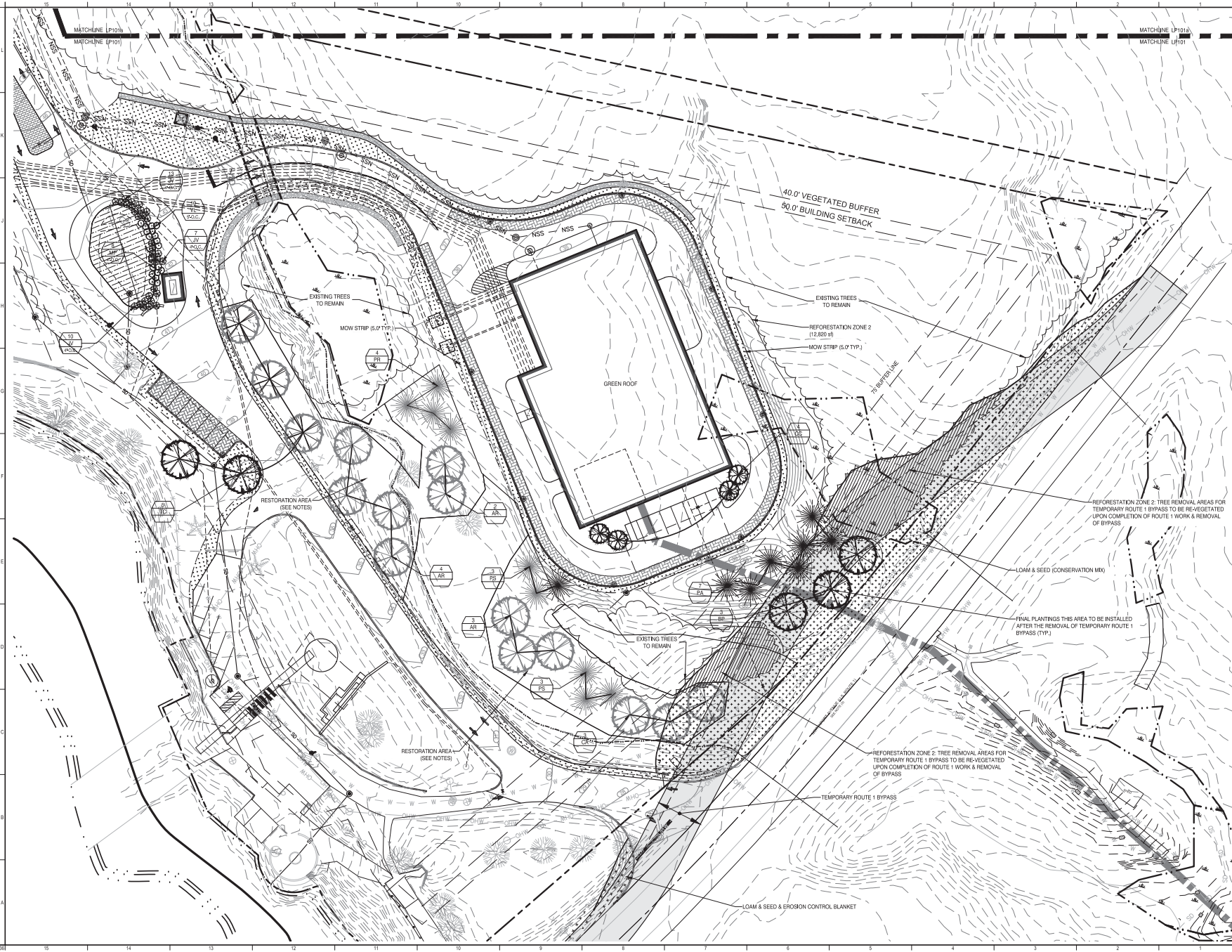
Nordic Aquafarms Inc., Land-based Aquaculture Facility

Belfast, Maine

L-28319-26-A-N

Ransom Consulting, Inc.

Project 171.05027.008



REV	DESCRIPTION	DATE
2	RESPONSE TO ADDITIONAL DEP QUESTIONS	7-25-19
1	ISSUED FOR PERMIT	7-03-19
0	ISSUED FOR PERMIT	5-14-17

RESPONSE TO DEP
7-25-19
CURRENT ISSUE STATUS

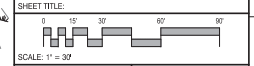


TRUE NORTH:
SMRT Architects and Engineers
144 Fore Street P.O. Box 618
Portland, Maine 04104
1.877.700.7678
www.smrtinc.com



NORDIC AQUAFARMS
285 NORTHPORT AVENUE
BELFAST, MAINE

PLANTING PLAN
AREA A



PROJECT MANAGER	ADB	PROJECT NO.	18076
A/E OF RECORD	MGJ		
JOB CAPTAIN	SP		
DRAWN BY	WSM		
SMRT FILE	LP101-18076	SHEET No.	

LP101

NOT FOR CONSTRUCTION