



March 22, 2019

Carter Cyr
Nordic Aquafarms, Inc.
PO Box 283
159 High Street
Belfast, Maine 04915

Letter of Intent – Agri-Cycle Energy

Agri-Cycle Energy along with its sister company Exeter Agri-Energy in Exeter, Maine, has the capacity to accommodate the waste streams outlined in this LOI that will be generated by Nordic Aquafarms. Furthermore, Exeter-Agri Energy in conjunction with our digestion partners across New England will be able to manage the anticipated increase in volume of these waste streams as the facility reaches its maximum production capacity over the next 5 years.

Exeter Agri-Energy was commissioned in late 2011 and has experienced unmatched production and reliability throughout the northeast. Exeter is co-located on Stonyvale Farms a family owned operation that manages over 3,500 acres of land base in which the farm and digester are co-located. Food waste and organic waste streams fueling the facility are exclusively supplied by Agri-Cycle and the renewable power is exported to the ISO New England grid system under a 20 yr, fixed rate power purchase agreement with Emera Maine.

Exeter Agri-Energy (EAE) is one of the premier dairy-based biogas plants in the nation utilizing proven technologies from CH-Four Biogas and Martin Energy Group. The 3-megawatt facility is capable of processing up to 100,000 tons per year of organic waste while reusing bi-products as animal bedding and nutrient rich liquid fertilizer. The anaerobic digestion system relies on three vessels operating at approximately 100°F and totaling 3 million gallons of treatment capacity.

Since its inception in 2012, Agri-Cycle Energy, our logistics and hauling company has expanded our collection capabilities across New England, operating a variety of route collection assets and long-haul vehicles in order to move food waste and other organic waste streams from our client locations to our host digester in Exeter as well as a number of other partner digestion facilities across the region. Agri-Cycle has succeeded in moving large volumes of food waste and organic waste streams from generators to these digestors since its formation and services these clients in a manner that contains any vectors or odors which is a critical component to any large-scale operation in the waste industry.

This integrated network of personnel, technology, and equipment has enabled the company to scale exponentially utilizing logistical efficiencies as the primary catalyst. Relying on Exeter Agri-Energy as the insurance outlet for all volume, the result is a reliable, interconnected service offering the following key attributes which are unmatched by any other provider in the Northeast:

- Collection – existing routes covering ME, NH, VT, MA, and NY
 - (15) food waste packer and rendering body vehicles focused on collection of food waste
 - (10) tractor trailers supporting long haul activities
 - (6) 60-100 yard dump trailers to move 30-ton max payloads down the highway
 - (4) 9,000-gallon vacuum tankers supporting liquid organic waste accounts

- Transfer – (5) material aggregation points across the Northeast:
 - Portland, Maine
 - York, Maine
 - Westborough, Massachusetts
 - Charlestown, Massachusetts
 - Springfield, Vermont

- Processing – food waste de-packaging operations:
 - Exeter Agri-Energy - Exeter, Maine
 - EL Harvey & Sons - Westborough, Massachusetts
 - Waste Management – Charlestown, Massachusetts

- Disposal Partners – existing relationships with digestion facilities in five states and Canada:
 - Exeter Agri-Energy – Exeter, Maine
 - Laforge Bioenvironmental – Grand Falls, New Brunswick
 - Vanguard Renewables – (3) locations in Rutland, Haverhill, and Hadley, Massachusetts
 - Lewiston Auburn Pollution Control Authority – Lewiston, Maine

Waste Management, Charlestown, Massachusetts

Client relationships throughout the region with exceptional organizations such as Hannaford, Wal-Mart, Patriot Place, Massachusetts General Hospital, Colby College, Whole Foods, Trader Joe's, Wellesley College, Big Y, Amazon Fresh, Simon Malls, Jones Lang LaSalle, Fidelity, Maine General Medical Center, Bertucci's, Boston Seaport Hotel, Sysco, Kerry Coffee, E.L. Harvey, Newport Biodiesel and Tyson Foods further demonstrate the positive reputation and comprehensive service offering deployed by Agri-Cycle.

Please check out our website that outlines our company and highlights our services offerings.

www.agricycleenergy.com We have also included the following below:

- Process overview of Anaerobic Digestion
- Photos of the Exeter Agri-Energy and Stonyvale Farm
- Photos of Agri-Cycle Energy's collection Fleet



What happens to the waste?



Food waste is saved in separate bins by area businesses, reducing waste discarded in landfills.



Bins are collected regularly and transported to a processing facility.



Food waste is processed through a depackager, and then mixed with manure inside the anaerobic digester.



Cow manure is collected and pumped into the anaerobic digester.



A bio-separator recovers the virtually odorless liquid material for use as natural cropland fertilizer, reducing the need for petroleum-based chemicals

A bio-separator recovers solid material for use as animal bedding or a compost product.



Anaerobic Digestion

can reduce landfill use, save fuel, create energy and produce valuable farm products.



Microorganisms reproduce by feeding on the organic matter in the anaerobic digester, creating biogas.



Biogas becomes fuel for the system, a combined heat and power unit.



Excess electricity is sold back to the grid, reducing fossil fuel consumption and CO2 emissions.

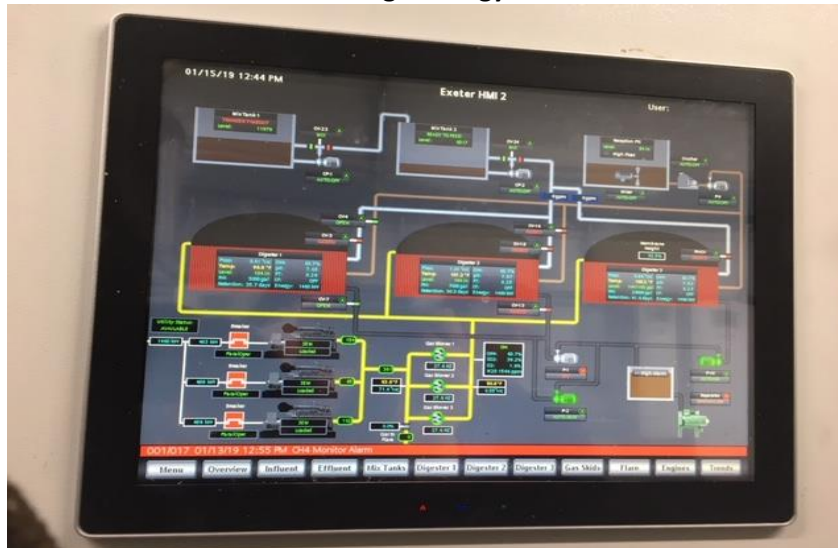
Exeter Agri-Energy & Stonyvale Farm



Exeter Agri-Energy - Plant Overview



Exeter Agri-Energy – PLC



Agri-Cycle Fleet – Dump Trailer



Agri-Cycle Fleet – 8,500 gallon vacuum tanker



Agri-Cycle Fleet – Collection Truck



Agri-Cycle is prepared to manage, dispose and process the waste streams outlined below for Nordic Aquafarms as they come online and scale their operation over the next 5 years.

Waste Streams Generated from Nordic Aquafarms:

Agri-Cycle will work with Nordic Aquafarms to manage and dispose of the current amounts listed below and can handle the slow increase to 50% volume from August 2020-August 2021 (Phase 1), followed by a slow Increase from 50-100% from 2024-2025 (Phase 2). We have the capacity to accommodate these volumes for at least five years of operation following each phase.

Sludge (WWTP)	250 cubic yards/day (wet @ 20% DM)
Irone Slough (IWTP)	22 cubic yards/day (wet @ 3%DM)
Salmon Processing Solids (heads, guts, mortalities, etc.)	22 yards/day
Salmon Processing Grease (Fat Trap)	1.5 yards/week

Please feel free to contact us with any questions.

Sincerely,



Daniel J. Bell
Agri-Cycle Energy
Partner / General Manager
(207) 671-3642
dan@agricycleenergy.com



April 2, 2019

Carter Cyr
Nordic Aqua Farms, Inc.
159 High Street
Belfast, Maine 04915

Re: Capabilities Statement

Dear Carter,

This letter is to confirm that Casella Organics has the capabilities to transport, recycle and/or dispose of the all volumes of organic byproducts and waste produced by Nordic Aqua Farms Construction and demolition debris as outlined by the attached Nordic Aquafarms Solid Waste Summary Table A (attached). According to your build-out schedule, Nordic Aqua Farms will eventually be producing 11,500 US short tons of rack waste and 15,400 dry tons filter sludge annually. Of particular importance due to the volumes generated, Casella Organics is uniquely positioned to manage all this waste through one or more of several outlets we manage, namely:

- **Transportation Services** – Casella operates a fleet of front load, rear load and roll-off collection services to meet any waste generators needs. Additionally, Casella has close relationships with haulers for large volume dump trailer, belt trailer and/or live floor trailer hauling. Our hauling division, Pine Tree Waste Services, can also transport volumes of non-hazardous MSW (Municipal Solid Waste) to the Penobscot Energy Recovery Corporation facility located in Orrington, ME. We are prepared to handle all amounts of recycled products that may be generated from this development, as well Universal Waste and Land Clearing Debris.
- **Composting** – Casella's Hawk Ridge Compost Facility converts 40,000 tons annually of organic waste into 80,000 yards of commercial compost that is sold throughout Maine and New England. The facility was opened in 1989 and was upgraded to a state of the art in-vessel Gicom tunnel composting technology in 1994. The facility has received many awards over its tenure.
- **Land Application** – Casella Organics has been operating material marketing and land application programs in the State of Maine since 1983. Many organic residuals can qualify for direct land application which is often less expensive than other recycling or disposal options. Casella offers a turnkey service including material and program licensing, marketing, transportation, field operations, analytical data management and regulatory reporting services. Casella has over 200 farm customers in the State of Maine.
- **Anaerobic Digestion** – Casella has a close relationship as a supplier to Village Green Ventures, LLC, operator of a commercial anaerobic digester in Brunswick, Maine. The

facility converts food and organic waste energy to methane which is burned to power energy generation. It is licensed to receive both solid and liquid organic waste.

Casella has a cooperative relationship with Exeter AgriEnergy located in Exeter Maine that receives 80,000 tons annually. Casella provides EAE with commercial and municipal food waste from Maine communities.

- Landfill Services - Special waste such as organic waste and demo debris can also be disposed of at the State of Maine's Juniper Ridge Landfill Facility located in West Old Town, ME that is operated by Casella.

To successfully manage this program, Casella envisions a diverse program utilizing a net work of facilities mentioned above. Casella can provide disposal at Juniper Ridge Landfill as a back-up to the program.

Key Reference Projects – Names and phone numbers of references are available upon request.

Dupont Nutrition USA, Inc. – located in Rockland Maine this plant extracts carrageenan from seaweed and produces approximately 32,000 tons annually of seaweed waste, trademarked as Algefiber. Dupont has a high service need requiring Casella to supply 6 dedicated dump trailers and a 350 day per year operating schedule. Casella markets Algefiber to agricultural and horticultural markets. Casella offers a turnkey service including marketing, transportation, material sampling and analytical, regulatory reporting and back-up storage when fields are unavailable.

Portland Water District – Casella manages the biosolids transportation, recycling and disposal program for Portland Water District East End and Westbrook facilities managing approximately 25,000 tons of biosolids annually to compost, anaerobic digestion and landfill outlets. Casella also provides 3 dedicated water tight dump trailers and services the facilities 365 days per year.

Verso Paper Company – located in Jay, Maine, Casella manages approximately 17,000 tons annually of varied materials including wood ash, primary sludge, combined primary and secondary sludge, flume waste and log truck cleanings. The marketing programs include the processing and production of dairy farm bedding, direct land application and soil blending and horticultural uses.

Carter, I hope this description of service options and reference projects demonstrate the broad capabilities of Casella Organics. This letter is not a quote for services but, rather, it is a statement of capabilities. The sole purpose of this letter is to communicate the willingness and capabilities that Casella Organics has towards providing the service as requested.

Please feel free to contact me with any future requests. I can be reached at (207) 461-1000.

Sincerely,



John Leslie
Division Manager – Maine

TABLE A
NORDIC AQUAFARMS SOLID WASTE STREAMS

Solid Waste Type	Estimated Quantities	Estimated Schedule
Construction Phase		
Construction & Demolition Debris	90 yards/day during construction	August 2019-August 2020, 2024-2025
Land Clearing Debris (timber)	1,146 cords (5433 cubic yards)	August 2019-August 2020, 2024-2025
Land Clearing Debris (brush & stumps)	TBD	August 2019-August 2020, 2024-2025
Land Clearing Debris (soil)	20,000 cubic yards	August 2019-August 2020, 2024-2025
Land Clearing Debris (rock)	14,000 cubic yards	August 2019-August 2020, 2024-2025
Universal Waste	5 yards/week	August 2019-August 2020, 2024-2025
Special Waste (asbestos insulation and roofing)	100 cu ft vermiculite insulation & 800 sq ft asphalt roofing	August 2019-August 2020
Special Waste (PAH-impacted soils)	TBD	August 2019-August 2020, 2024-2025
Belfast Bay Sediment	15,000 cys	August 2019-August 2020, 2024-2025
Operations Phase		
Sludge (WWTP)	250 cubic yards/day (wet @ 20% DM)	Slow increase to 50% volume from August 2020-August 2021, Slow Increase from 50-100% from 2024-2025
Irone Slough (IWTP)	22 cubic yards/day (wet @ 3%DM)	Slow increase to 50% volume from August 2020-August 2021, Slow Increase from 50-100% from 2024-2025
Salmon Processing Solids (heads, guts, mortalities, etc.)	22 yards/day	Slow increase to 50% volume from August 2020-August 2021, Slow Increase from 50-100% from 2024-2025
Salmon Processing Grease (Fat Trap)	1.5 yards/week	Slow increase to 50% volume from August 2020-August 2021, Slow Increase from 50-100% from 2024-2025
Municipal Solid Waste	60 yards/week	Slow increase to 50% volume from August 2020-August 2021, Slow Increase from 50-100% from 2024-2025
Universal Waste	2 yards /week	Slow increase to 50% volume from August 2020-August 2021, Slow Increase from 50-100% from 2024-2025
Recyclable Products	60 yards/week	Slow increase to 50% volume from August 2020-August 2021, Slow Increase from 50-100% from 2024-2025



THINK GREEN.®

March 25, 2019

Mr. Carter Cyr
Nordic Aquafarms Inc
159 High Street
Belfast, Maine 04915

RE: Letter of Commitment to Manage Solid Waste Streams

Dear Mr. Cyr:

Waste Management Disposal Services of Maine, Inc. (WMDSM) is excited to work with Nordic Aquafarms (NAF) to responsibly and sustainably manage the solid waste streams that will be generated from your proposed project in Belfast, Maine. This letter confirms that WM can manage the waste streams that will be generated from the construction and initial operation phases of the proposed project, as identified in the attached Table A.

We will work with NAF to recycle, or develop plans to recycle, as much of the waste as possible. These options may include, but are not limited to, direct land application, composting, anaerobic digestion, and/or other advanced forms of material conversion to create value added products. Development of long-term recycling plans for any specific waste stream are subject to waste stream characterization, material suitability, an economic and environmental feasibility analysis, and regulatory permitting.

WM has disposal capacity at its site in Norridgewock through December 2024 at present fill rates. We are presently going through the landfill expansion permitting process with the State of Maine to add additional capacity beyond 2024.

Many of the waste streams can be landfilled at our fully permitted landfill in Norridgewock, Maine, provided that the wastes meet all facility, state, and federal requirements for landfill disposal. These requirements include that each waste stream be non-hazardous, have no free liquids, are sufficiently firm to maintain stability, and have low odor. Special waste acceptance at our Norridgewock landfill is also subject to completion of WM waste approval forms, meeting our acceptance criteria, and, in some cases, sufficient compatible waste streams to meet our guidelines for responsible landfill management.

Our services will include comprehensive waste disposal and recycling permitting (if and as needed), full transportation services, and disposal and/or recycling management services.

All services outlined in this Letter are subject to the negotiation of the terms of a mutually acceptable service agreement to be entered into by the parties.

We look forward to working cooperatively with Nordic Aquafarms to manage all the identified waste streams safely, responsibly and sustainably.

If you have any questions, please do not hesitate to call. Thank you.

Sincerely,

Waste Management Disposal Services of Maine, Inc.

A handwritten signature in blue ink that reads 'Steven Poggi'.

Steven Poggi
Director Disposal Operations
New York - New England Market Area

TABLE A
NORDIC AQUAFARMS SOLID WASTE STREAMS

Solid Waste Type	Estimated Quantities	Estimated Schedule
Construction Phase		
Construction & Demolition Debris	90 yards/day during construction	August 2019-August 2020, 2024-2025
Land Clearing Debris (timber)	1,146 cords (5433 cubic yards)	August 2019-August 2020, 2024-2025
Land Clearing Debris (brush & stumps)	TBD	August 2019-August 2020, 2024-2025
Land Clearing Debris (soil)	20,000 cubic yards	August 2019-August 2020, 2024-2025
Land Clearing Debris (rock)	14,000 cubic yards	August 2019-August 2020, 2024-2025
Universal Waste	5 yards/week	August 2019-August 2020, 2024-2025
Special Waste (asbestos insulation and roofing)	100 cu ft vermiculite insulation & 800 sq ft asphalt roofing	August 2019-August 2020
Special Waste (PAH-impacted soils)	TBD	August 2019-August 2020, 2024-2025
Belfast Bay Sediment	15,000 cys	August 2019-August 2020, 2024-2025
Operations Phase		
Sludge (WWTP)	250 cubic yards/day (wet @ 20% DM)	Slow increase to 50% volume from August 2020-August 2021, Slow Increase from 50-100% from 2024-2025
Irone Slough (IWTP)	22 cubic yards/day (wet @ 3%DM)	Slow increase to 50% volume from August 2020-August 2021, Slow Increase from 50-100% from 2024-2025
Salmon Processing Solids (heads, guts, mortalities, etc.)	22 yards/day	Slow increase to 50% volume from August 2020-August 2021, Slow Increase from 50-100% from 2024-2025
Salmon Processing Grease (Fat Trap)	1.5 yards/week	Slow increase to 50% volume from August 2020-August 2021, Slow Increase from 50-100% from 2024-2025
Municipal Solid Waste	60 yards/week	Slow increase to 50% volume from August 2020-August 2021, Slow Increase from 50-100% from 2024-2025
Universal Waste	2 yards /week	Slow increase to 50% volume from August 2020-August 2021, Slow Increase from 50-100% from 2024-2025
Recyclable Products	60 yards/week	Slow increase to 50% volume from August 2020-August 2021, Slow Increase from 50-100% from 2024-2025