

Exhibit 10-1

**New England Clean Energy Connect
Plan for Protection of Sensitive Natural Resources
During Initial Vegetation Clearing**

Prepared by:

**Central Maine Power Company
83 Edison Drive
Augusta, Maine 04336**

Revised January 2019



Introduction

This Construction Vegetation Clearing Plan (VCP) applies to construction of the new transmission lines associated with Central Maine Power Company's (CMP) New England Clean Energy Connect (NECEC) project. The VCP describes restrictive and protective management practices required for work within and adjacent to protected natural resources during vegetation clearing associated with NECEC project construction. The requirements described in this VCP apply to initial project construction and are not intended to apply to planned or emergency maintenance or repair actions.

The goal of the VCP is to provide construction personnel with a cohesive set of vegetation management specifications and performance standards for work within and adjacent to protected natural resources during transmission line construction.

The protected natural resources subject to restrictive vegetation management requirements include:

- Wetlands and streams (intermittent and perennial);
- Perennial streams within Segment 1 (greenfield) portion of the NECEC project;
- Perennial streams within designated Atlantic salmon (*Salmo salar*) habitat;
- Outstanding river segments, rivers, streams or brooks containing threatened or endangered species;
- Gold Brook and Mountain Brook containing State Threatened (*Epeorus frisoni*) and / or State Special Concern (*Gyrinophilus porphyriticus*) species;
- State Special Concern Species Habitat: Rusty blackbird (*Euphagus carolinus*);
- Significant Vernal Pools (SVP);
- Inland Waterfowl and Wading Bird Habitat (IWWH);
- Deer Wintering Areas (DWA);
- Rare plant locations; and
- Locations over mapped significant sand and gravel aquifers.

In locations where individual restrictions or procedures overlap, or multiple restrictions apply, the more stringent restrictions and all applicable procedures will be followed by construction personnel.

1.0 Right-of-Way Vegetation Management Procedures

1.1 Arboricultural Management Practices

Capable vegetation will be removed and controlled within the footprint of the NECEC development, including within the new (greenfield) and co-located transmission line corridors. Capable vegetation is defined as woody plant species and individual specimens that are capable of growing to a height that would reach the conductor safety zone, as illustrated in Figure 1 attached to this exhibit. Removal of capable species beneath the conductors within transmission line corridors is intended to meet the following goals:

- Facilitate construction;
- Maintain the integrity and functionality of the line;
- Facilitate the safe operation of the line;
- Maintain access in case of emergency repairs; and
- Facilitate safety inspections.

Therefore, the objective of this VCP will be to remove woody vegetation capable of encroaching into the Minimum Vegetation Clearance Distance (MVCD) of the new transmission lines to facilitate construction and maintain the integrity and safe operation of the transmission line consistent with the standards of North American Electric Reliability Corporation's (NERC) Transmission Vegetation Management¹. This will be accomplished by practicing an integrated vegetation management strategy using a combination of mechanical cutting, hand-cutting, and selective herbicide applications. Mechanical mowing may also be used along access roads or in unusual circumstances, should the typical procedures not suffice.

Throughout clearing and construction, shrub and herbaceous vegetation will remain in place to the extent practicable. Capable vegetation, dead trees, "hazard trees" and all vegetation over 10 feet in height will be removed during initial transmission line corridor clearing prior to construction of the new transmission lines. Due to the sag of the electric transmission lines between the structures, which varies with topography, the distance between structures, tension on the wire, electrical load, air temperature and other variables, the required clearance is typically achieved by removing all capable species from the transmission line corridor. Hazard trees are those trees typically on the edge of the transmission line corridor that pose an imminent threat of violating the minimum separation standard or are at risk of contacting the transmission lines themselves due to disease, configuration or potential instability. Hazard trees are typically removed immediately upon identification.

The following procedures will be implemented during vegetation management activities to protect sensitive natural resources:

¹ North American Electric Reliability Corporation Transmission Vegetation Management, Standard FAC 003 – 3 Technical Reference, July 1, 2014.

- a. Protected natural resources and their associated buffers will be flagged or located with a Global Positioning System (GPS) prior to all construction and clearing activities;
- b. When and if terrain conditions permit (e.g., certain ravines and narrow valleys) capable vegetation will be permitted to grow within and adjacent to protected natural resources or critical habitats where maximum growing height can be expected to remain well below the conductor safety zone. Narrow valleys are those that are spanned by a single section of transmission line, structure-to-structure.
- c. Hand cutting with chainsaws will be the preferred method of vegetation clearing within protected natural resource buffers and sensitive areas, where reasonable and practicable and with the appropriate protective measures. However, mechanized equipment may be used during frozen conditions, or when matted travel lanes and the reach-in technique are implemented.;
- d. Equipment access through wetlands or over streams will be avoided as much as practicable by utilizing existing public or private access roads, with landowner approval where required;
- e. Equipment access in upland areas with saturated soils will be minimized to the extent practicable, or these areas will be matted to avoid excessive rutting or other unnecessary ground disturbance;
- f. Significant damage to wetland or stream bank vegetation, if any, will be repaired following completion of clearing activities in the area;
- g. Areas of significant soil disturbance will be stabilized and reseeded following completion of clearing activities in the area.
- h. When capable vegetation within and adjacent to a protected natural resource or identified critical habitat will be removed for the purpose of constructing the development, the natural regeneration of non-capable woody vegetation will be allowed within all protected resources. At a minimum, the natural regeneration of non-capable woody vegetation will be allowed. To facilitate the regeneration of natural vegetation within and adjacent to (generally, within 75 feet of) protected natural resources and special habitats, the contractor will separate the topsoil from the mineral soil when excavating during project construction. The excavated topsoil will be returned to its original place and position in the landscape and appropriate erosion control methods will be utilized.
- i. Locations within the NECEC that contain any of the invasive plant species listed in Table 1 below, will be identified prior to the start of construction of the project or the start of construction on any individual segment of the project at the discretion of CMP or its contractor. CMP will develop an invasive species vegetation monitoring plan and submit it to the Department for review and approval prior to the start of construction on the project. This plan will have a stated objective of preventing the introduction and spread of

invasive species as a result of construction. Herbicide application is an acceptable method of controlling invasive growth when hand removal or other non-chemical methods will not be effective, including in protected natural resources and other sensitive areas.

Table 1 – Invasive Plant Species¹

Species	Common Name
1. <i>Alliaria petiolata</i>	Garlic mustard
2. <i>Berberis thunbergii</i>	Japanese barberry
3. <i>Celastrus orbiculatus</i>	Oriental bittersweet
4. <i>Cynanchum louiseae</i>	Black swallowwort
5. <i>Elaeagnus umbellata</i>	Autumn olive
6. <i>Fallopia japonica</i>	Japanese knotweed
7. <i>Frangula alnus</i>	Glossy buckthorn
8. <i>Impatiens glandulifera</i>	Ornamental jewelweed
9. <i>Lonicera morrowii</i>	Morrow's honeysuckle
10. <i>Lonicera tatarica</i>	Tatarian honeysuckle
11. <i>Lythrum salicaria</i>	Purple loosestrife
12. <i>Phragmites australis</i>	Common reed
13. <i>Poa nemoralis</i>	Wood blue grass
14. <i>Rhamnus cathartica</i>	Common buckthorn
15. <i>Rosa multiflora</i>	Multiflora rose

1-MNAP's list of "Currently considered invasive in Maine" excluding aquatic plant species.

2.0 Vegetation Management Methods – All Transmission Line Corridor Areas

2.1 Mechanical Methods

During construction, vegetative clearing of capable species will be completed primarily with mechanical equipment, including motorized equipment. All capable species and any dead or hazard trees will be cut at ground level except in designated buffer zones, as described below. Large vegetation cut during construction will be handled in accordance with the Maine Slash Law².

Access roads and travel lanes will be located to protect sensitive and protected natural resources to the maximum extent practicable and construction matting will be used in accordance with CMP's environmental guidelines and per the timber mat performance standards provided below.

Timber mats or matting used for construction:

2 12 MRSA §9331 et. Seq.

- shall not be made from wood from ash trees (*Fraxinus* sp);
- unfinished timbers used in the construction of the mats must be free of bark, unless produced by a firm certified by the Maine Forest Service (MFS) for production of mats with incidental bark for this project. Such mats must be marked as outlined in the supplier's agreement. Applicant shall maintain a copy of the MFS compliance agreement including a representation of the accepted mark in the records;
- before entering the State of Maine, mats used for the project shall be cleaned of soil and vegetative material by pressure washing;
- shall not have been used in, or made from lumber from, Federally Quarantined areas as set out in 7 CFR 301 unless accompanied by the appropriate USDA certificate of treatment required for interstate transport. Said certificates will be maintained in a central filing location available for review by appropriate Agency personnel for a period of three (3) years after project completion, as determined by CMP; and,
- must have shipping information sufficient to identify the shipper and number and shipping origin of the mats.

The Maine Forest Service and U. S. Department of Agriculture reserve the right to inspect all timber mats and matting material used for the project for compliance with these standards.

2.2 Herbicide Application

Herbicide applications will likely begin after clearing is completed to gain control of vegetation growth. When control is achieved, treatment will typically occur as part of scheduled maintenance on a 4-year cycle or as needed. By using selective herbicides and a variety of application methods, desired vegetation along the transmission line corridor will eventually consist of a dense, low-growing plant community that will discourage the establishment of capable tree species. Therefore, fewer capable woody species and specimens will require treatment in future applications.

The following procedures will be implemented during herbicide applications:

- a. Herbicides will be used in strict accordance with the manufacturer's EPA-approved labeling and will not be applied directly to waterbodies or areas where surface water is present;
- b. In the new corridor (greenfield) no foliar herbicides will be applied within a 100-foot buffer on perennial and coldwater fishery streams and within a 75-foot buffer on intermittent streams that do not contain coldwater fisheries.

- c. In the co-located sections, no foliar herbicides will be applied within 75 feet of rivers, streams, brooks, lakes, ponds, or within 25 feet of wetlands that have water present at the surface at the time of the application.
- d. For stream and rivers classified as outstanding river segments, as well as those containing threatened or endangered species and coldwater fisheries, no foliar herbicides will be applied within a 100-foot buffer.
- e. Herbicides will not be applied to stumps (cut stump treatment) within areas of standing water.
- f. Herbicides will not be mixed, transferred or stored within 100 feet of any wetland or surface water. On public access roads, herbicide mixing, transfer or storage may be done within 100 feet of wetlands or surface waters;
- g. Herbicides will not be mixed, transferred or stored within 100 feet of Significant Vernal Pool depressions. On public access roads, herbicide mixing, transfer or storage may be done within 100 feet of Significant Vernal Pool depressions;
- h. Unless performed on public access roads, herbicides will not be mixed, transferred or stored over mapped significant sand and gravel aquifers;
- i. Herbicides will not be applied, mixed, transferred or stored within 100 feet of any known private well or spring or within 200 feet of any known public water supply well. On public access roads, herbicide mixing, transfer or storage may be done within 200 feet of known public water supply wells;
- j. When herbicide applications are performed in wetlands without standing water, only herbicides approved for use in wetland environments will be used;
- k. Herbicides will not be applied to any area when it is raining or when wind speed exceeds 15 miles per hour as measured on-site at the time of application. When wind speeds are below 3 miles per hour, applicators should be aware whether a temperature inversion is present, and should consult the herbicide label to determine whether application should proceed under these conditions;
- l. The foreman or licensed applicator on each herbicide application crew will be licensed by the Maine BPC and will remain in eye contact and within earshot of all persons on his/her crew applying herbicides. At least one individual from any company applying herbicides will also hold a Commercial Master Applicator License issued by the BPC. This Master Applicator must have the ability to be on-site to assist persons applying herbicides within six hours driving time. If an out-of-state company is conducting the herbicide application, the company will have a Master Applicator in Maine during any application. Application of herbicides will be in accordance with applicable regulations promulgated under the Maine Pesticides Control Act, including those regulations to minimize drift, to maintain setbacks from sensitive areas during application, and to maintain setbacks from surface waters during the storing/mixing/loading of herbicides; and

- m. Herbicides will typically be mixed in a truck-mounted tank that remains on public access roads. Herbicide application is done by personnel with low-volume, hand-pressurized (manual) backpacks with appropriate nozzles, to minimize drift, who travel along the transmission line corridor by foot or by all-terrain vehicle and spot-treat target species and specimens.

The location of all streams, wetlands, significant vernal pools, rare plant locations, known wells, and mapped significant sand and gravel aquifers crossed by the transmission line corridor will be provided to construction personnel.

2.3 Petroleum Product & Hazardous Materials Management

Any petroleum products or other hazardous material within the transmission line corridor during construction will be managed in accordance with CMP's Environmental Control Requirements (**see Exhibit 15-1**) and will include the following setbacks unless CMP can demonstrate that, due to special circumstances at specified locations, these setbacks are impractical at those locations.

- (a) No fuel storage, vehicle/equipment parking and maintenance, and refueling activity may occur within 100 feet of a protected wetland or other waterbody, unless no practicable alternative exists and secondary containment with 110% capacity is provided for any fuel storage containers or tanks, or if it occurs on a paved road.
- (b) No fuel storage, vehicle/equipment parking and maintenance, and refueling activity may occur within 200 feet of a known private water supply.
- (c) No fuel storage, vehicle/equipment parking and maintenance, and refueling activity may occur within 400 feet of a known public water supply.
- (d) No fuel storage, vehicle/equipment parking and maintenance and refueling activity may occur within 25 feet minimum of the following:
 - (i) An area listed in Maine's biological conservation data system, Biotics, of the Maine Natural Areas Program, including rare natural communities and ecosystems (state rarity rank of S1 through S3 and habitats supporting Endangered or Threatened plant species). Boundaries and locations are as determined by the Maine Natural Areas Program of the Department of Agriculture, Conservation and Forestry.
 - (ii) Habitat of any species declared rare, threatened or endangered by the Maine Department of Inland Fisheries and Wildlife, Maine Department of Marine Resources, or the Director of the U.S. Fish and Wildlife Service.

3.0 Vegetation Management within Freshwater Wetlands

Transmission line corridor wetlands range in type from small, emergent wetlands formed in ruts from logging equipment to large forested wetland systems.

3.1 Vegetation Clearing Restrictions within and Adjacent to Freshwater Wetlands

The following restrictions apply to vegetation clearing within freshwater wetlands and their buffers:

- a. Unless frozen, heavy equipment travel in wetlands will be performed on construction matting, or other approved alternative protective measures will be implemented.
- b. If initial clearing or other construction activities result in areas of bare soil or minimally vegetated cover, the areas of bare soil will be allowed to revegetate naturally, where practicable. If areas are sufficiently large to warrant planting, a native seed designed to provide short term cover will be applied, and the area will be allowed to return to non-capable native woody and perennial herbaceous vegetation naturally.
- c. No accumulation of slash will be left within wetlands.

4.0 Vegetation Clearing within Stream Buffers

Stream buffers, as measured horizontally from the top of each stream bank, will be established for vegetation removal along streams within the transmission line corridor. A “stream buffer” is a buffer on a stream, river, or brook. In no case may the stream buffer be reduced to less than 75 feet. Additional restrictions will be applied within 100 feet of streams meeting certain criteria, as described in 4.1a, below.

This section describes the restrictions related to vegetation removal within these stream buffers. All vegetation clearing procedures and restrictions that apply to vegetation management for transmission line corridor construction also apply within the stream buffers.

4.1 Additional Vegetation Clearing Restrictions within Stream Buffers

The following additional restrictions apply to vegetation clearing within stream buffers:

- a. Riparian natural buffers (or “stream” buffers) will be retained within 100 feet of all perennial and coldwater fishery streams within the greenfield (Segment 1) portion of the Project, outstanding river segments, or rivers, streams, or brooks containing Threatened or Endangered species unless the Department determines that the functions and values of the stream buffer will not be impacted by the removal of vegetation and approves an alternative minimum buffer.

- b. For streams in areas where the new transmission line will be co-located within existing rights-of-way, CMP proposes to maintain a 75 foot buffer, unless meeting any of the above criteria, since the corridor is currently being maintained in an early successional state according to the guidelines set forth in CMP's Vegetation Management Plan (Exhibit 10-2), and the effect of the additional clearing (typically less than 75 feet) to accommodate the new line has been minimized.
- c. The boundary of each stream buffer will have unique flagging installed to distinguish between the applicable 75 foot or 100 foot stream buffer prior to clearing. Flagging will be maintained throughout construction.
- d. Foliar herbicides will be prohibited within the stream buffer, and all refueling/maintenance of equipment will be excluded from the buffer unless it occurs on an existing paved road or if secondary containment is used with oversight from an environmental inspector.
- e. All stream crossings by heavy equipment will be performed through the installation of equipment spans with no in-stream disturbances. Streams will not be forded by heavy equipment.
- f. Initial tree clearing will be performed during frozen ground conditions whenever practicable, and if not practicable, the recommendations of the environmental inspector will be followed regarding the appropriate techniques to minimize disturbance such as the use of selectively placed travel lanes within the stream buffer. CMP will not place any transmission line structures within the stream buffer, unless specifically authorized by the MDEP and accompanied by a site specific erosion control plan. No structures will be placed within 25 feet of any stream regardless of its classification.
- g. Within that portion of the appropriate stream buffer that is within the wire zone (i.e., within 15 feet, horizontally, of any conductor; see Figure 1), all woody vegetation over 10 feet in height, whether capable or non-capable, will be cut back to ground level and resulting slash will be managed in accordance with Maine's Slash Law. No other vegetation, other than dead or hazard trees, will be removed. Within the stream buffer and outside of the wire zone, non-capable species may be allowed to exceed 10 feet in height unless it is determined that they may encroach into the conductor safety zone prior to the next four year maintenance cycle;
- h. Removal of capable species, dead or hazard trees within the appropriate stream buffer will typically be accomplished by hand-cutting. Use of mechanized harvesting equipment is allowed if supported by construction matting or during frozen conditions in a manner (i.e., use of travel lanes and reach-in techniques) that preserves non-capable vegetation less than 10 feet in height to the greatest extent practicable;
- i. No slash will be left within 50 feet of any stream.

Allowing non-capable vegetation to remain as described above within the appropriate stream buffer will provide shading and reduce the warming effect of direct sunlight (insolation). Low ground cover vegetation will also remain to filter any sediment in surface runoff. These restrictions will allow the stream buffers to provide functions and values similar to those provided prior to transmission line construction.

4.2 Vegetation Management within the Roaring Brook Mayfly and Northern Spring Salamander Conservation Management Areas of Mountain Brook and Gold Brook

During consultation with Maine Department of Inland Fisheries and Wildlife (MDIFW) for the NECEC project, MDIFW identified Gold Brook (PSTR 15-06, PSTR 16-07, PSTR 16-10 and PSTR 16-15) and Mountain Brook (PSTR-33-01, PSTR-EM-34-01, PSTR-EM-34-01) as high priority resources in which full height vegetation should be retained within the 250-foot conservation management areas to protect the habitat of Roaring Brook Mayfly (*Epeorus frisoni*) and Northern Spring Salamander (*Gyrinophilus porphyriticus*). Gold Brook in Appleton Twp contains Roaring Brook Mayfly habitat, while Mountain Brook in Johnson Mountain Twp contains both Roaring Brook Mayfly and Northern Spring Salamander habitat.

During construction, vegetation will be cleared only in areas required for access and construction of the NECEC project; all other areas will be retained as full height vegetation, as shown on Figure 2 and Figure 3 of this exhibit. The access roads and structure preparation areas will be maintained as scrub-shrub habitat to allow for post-construction maintenance, repair and/or emergency access during operation of the line.

5.0 Vegetation Clearing within Significant Vernal Pool Habitat (SVPH)

Vegetated buffers of 250 feet, as measured from the edge of the pool depression, will be established for SVPs crossed by the transmission line corridor. The SVP depression and buffer area together comprise the SVPH. Vegetation clearing within the SVPH will be subject to the same procedures and prohibitions, as applicable, which are required in the typical transmission line corridor, as well as to the additional measures below.

5.1 Additional Vegetation Management Restrictions within SPVH

The following additional restrictions apply to vegetation clearing within SVPH:

- a. Mechanized equipment will not be allowed within the vernal pool depression, unless the depression encompasses the entire width of the transmission line corridor. Mechanized equipment will only be allowed to cross the vernal pool depressions during frozen or dry conditions or with the use of mats;
- b. Initial clearing within a SVPH will occur during frozen ground conditions. If not practicable, hand cutting or reach in techniques will be used. If that is not adequate, travel lanes to accommodate mechanical equipment in the 250-foot buffer may be used with approval of the MDEP.

- c. Between April 1 and June 30, no vegetation removal using tracked or wheeled equipment will be performed within the 250-foot SVP buffer;
- d. No refueling or maintenance of equipment, including chainsaws, will occur within 250 feet of SVP depressions, unless done so on a public access road;
- e. No herbicide use is permitted within 25 feet of the SVP pool depression; and
- f. No accumulation of slash will be left within 50 feet of the edge of the SVP depression and slash piles will not exceed 18 inches tall.

6.0 Vegetation Clearing within Moderate or High Value Inland Waterfowl and Wading Bird Habitat

Inland Waterfowl and Wading Bird Habitats (IWWH) are habitats mapped by the MDIFW that contain an inland wetland complex used by waterfowl and wading birds, plus a 250-foot nesting habitat area surrounding the wetland. The nesting habitat is considered to be part of the mapped IWWH. No additional buffers are proposed for IWWHs beyond this mapped habitat, and as such the vegetation maintenance restrictions apply to the mapped habitat only.

Vegetation clearing within the IWWH will be subject to the same procedures and prohibitions, as applicable, which are required in the typical transmission line corridor and for stream buffers.

6.1 Additional Vegetation Clearing Restrictions within Inland Waterfowl and Wading Bird Habitat

The following additional restrictions apply to vegetation clearing within mapped IWWH:

- a. If practicable, vegetation clearing will take place during frozen ground conditions. If not practicable, vegetation within IWWH will be removed using hand cutting or reach-in techniques and appropriate techniques to minimize disturbance to the maximum extent practicable, such as the use of travel lanes to accommodate mechanical equipment use in the IWWH.
- b. Between April 15 and July 15, use of motorized vehicles (e.g., all-terrain vehicles) and mechanized equipment (e.g., chainsaws or brush cutters) within IWWH is prohibited. Use of non-mechanized hand tools is allowed during this time period;
- c. No refueling or maintenance of equipment, including chainsaws, will occur within the IWWH, unless done so on a public access road; and
- d. No herbicide use is permitted within 25 feet of any wetland within the mapped IWWH.
- e. Where overhead transmission lines cross an IWWH area, CMP will install bird diverters or aviation marker balls according to the manufacturer's guidelines and applicable transmission line codes unless otherwise determined to be

impracticable by the Maine Department of Environmental Protection (MDEP) in consultation with MDIFW.

- f. Provided they do not present a safety hazard and are naturally present, CMP will leave undisturbed a minimum of 2-3 snags per acre to provide nesting habitat for waterfowl. Where appropriate, to mitigate habitat impacts due to the development, and as approved by the MDEP, capable species will be topped, girdled, and/or treated with herbicides to prevent re-growth to create snags. Snags will be 12-16 inch in diameter or the largest size available from the existing stand of vegetation.
- g. No accumulation of slash will be left within the IWWH.
- h. Impacts to scrub-shrub and herbaceous vegetation within the IWWH will be minimized to the maximum extent practicable.

7.0 Vegetation Clearing within Mapped Deer Wintering Areas

Deer Wintering Areas (DWA) provide important refuge for white-tailed deer (*Odocoileus virginianus*) during the winter months in northern climates and are typically characterized by an extensive stand of mature softwood species with a dense forest canopy.

During construction, impacts to scrub-shrub and herbaceous vegetation and other non-capable species will be minimized to the maximum extent practicable. No additional vegetation clearing restrictions are proposed within mapped DWAs in the co-located portions of the Project, as all capable species will be removed from these and other areas within the transmission line corridor in order to comply with NERC Transmission Vegetation Management standards. Clearing restrictions within the Upper Kennebec DWA are provided below.

7.1 Additional Clearing Restrictions within the Upper Kennebec Deer Wintering Area

In consultation with MDIFW for the NECEC Project, CMP has identified and designated ten deer travel corridors within the Upper Kennebec River DWA (Map ID 060065), as shown in Figure 4 of this exhibit, which will be managed as softwood stands to promote deer movement across the transmission line corridor during the winter months when snow depths have the potential to inhibit deer travel. The NECEC transmission line corridor traverses this DWA from a point in The West Forks Plantation to a point in Moxie Gore. CMP has agreed to manage these deer travel corridors, designated and labeled Corridors 1 through 8 in Figure 4, as softwood stands and will allow for the maximum tree height that can practically be maintained without encroaching into the conductor safety zone or into the necessary cleared area adjacent to structures. Tree heights will vary based on structure height, conductor sag, and topography, but will generally range from 25 to 35 feet. Vegetation within Corridors 9 and 10, which are located where the transmission line will be buried using horizontal directional drilling, will be allowed to grow to its full height.

Within designated deer travel corridors 1 through 8, during the initial vegetation clearing for construction all capable hardwood species and individual softwood specimens will be cut to heights necessary so that they do not intrude into the conductor safety zone and are not at risk of growing into the conductor safety zone prior to the next scheduled vegetation maintenance. Softwood specimens that are not intruding into the conductor safety zone and are not at risk of growing into the conductor safety zone prior to the next scheduled vegetation maintenance will be retained. Access roads and structure preparation and installation areas will be cleared of all capable and non-capable species and maintained as scrub-shrub habitat to allow for post-construction maintenance, repair and/or emergency access during operation of the line. The designated deer travel corridors will be flagged prior to construction and identified in a database maintained by CMP, further described in Section 11.0.

8.0 Vegetation Clearing within State-mapped Rusty Blackbird Habitat

In consultation with MDIFW for the NECEC Project, CMP agreed to allow for the retention of 15-foot tall softwood species within the Rusty Blackbird (*Euphagus carolinus*) habitat, shown in Figure 5. The additional height will avoid project impacts to habitat of this State Species of Special Concern.

During the initial vegetation clearing for construction activities, all capable hardwood species and softwood specimens over 15 feet in height, as well as those anticipated to grow taller than 15 feet in height prior to the next scheduled vegetation maintenance, will be cut at ground level and removed. Softwood specimens up to 15 feet in height will be retained. The access roads and structure preparation areas within the Rusty Blackbird habitat will be cleared of all capable and non-capable species and maintained as scrub-shrub habitat to allow for post-construction maintenance, repair and/or emergency access during operation of the line. The habitat will be flagged prior to construction and identified in a database maintained by CMP, further described in Section 11.0.

9.0 Vegetation Clearing within Rare Plant Locations

Vegetation clearing of the transmission line corridor has the potential to impact rare plants and/or alter their habitat. The following additional vegetative clearing restrictions will minimize impacts to rare plants. The additional restrictions will apply only to the demarcated locations of the identified rare plants. No additional buffers will be established surrounding rare plant locations. These restrictions are intended to maintain existing hydrology and limit soil disturbance within rare plant locations.

9.1 Additional Vegetation Clearing Restrictions within Rare Plant Locations

The following additional restrictions will apply to vegetation clearing for rare plant species in the identified location:

- a. Unless rare plant locations encompass the entire width of the transmission line corridor, mechanized equipment will only be allowed to cross rare plant locations during frozen conditions, on established travel paths/crossings, or with the use of mats.
- b. Initial clearing within rare plant communities will be undertaken during frozen ground conditions whenever practicable, and if not practicable selective mat placement and reach-in techniques will be used to minimize disturbance to the rare plant communities to the maximum extent practicable.
- c. If initial clearing or other construction activities result in areas of bare soil or minimally vegetated cover, where practicable, these areas will be allowed to revegetate naturally. If areas are sufficiently large to warrant planting, a native seed mix designed to provide short term cover will be applied and the area will be allowed to return to native woody and perennial herbaceous vegetation naturally.
- d. Heavy equipment travel within rare plant communities will be minimized to the maximum extent practicable. Hand cutting or “reach-in” techniques to cut and remove capable tree species and vegetation over 10 feet tall within the wire zone, or other techniques as agreed upon in consultation with the MDEP and Maine Natural Areas Program (MNAP), will be used. When equipment access is necessary, activity will be restricted to a few narrow travel lanes that have been clearly marked prior to clearing activity.
- e. No refueling or maintenance of equipment, including chain saws, will occur within demarcated rare plant locations, unless done on a public access road.
- f. No foliar herbicide use is permitted within the demarcated rare plant locations, however cut surface herbicides may be used on capable species and specimens.

10.0 Vegetation Clearing Procedures over Mapped Significant Sand and Gravel Aquifers

Transmission lines located over mapped significant sand and gravel aquifers are subject to the typical transmission line corridor clearing procedures, except that no refueling or maintenance of equipment, and no herbicides may be mixed, transferred or stored, over the mapped significant sand and gravel aquifers, unless done so on a public access road.

11.0 Vegetation Clearing Procedures in Tapered Vegetation Management Areas

In consultation with MDEP and the LUPC, CMP determined that management of vegetation in a tapered configuration and manner was appropriate in order to minimize the visual impact from

viewpoints on the summit of Coburn Mountain in Upper Enchanted Township and from Rock Pond looking towards Three Slide Mountain in T5 R6 BKP WKR. These areas include the following coordinates:

Coburn Mountain – From: 45°25'45.01"N, 70° 6'8.22"W To: 45°27'37.45"N, 70° 6'51.44"W

Rock Pond – From: 45°27'48.24"N, 70°25'31.82"W To: 45°27'54.92"N, 70°26'3.11"W

During initial clearing of the Project in these areas, CMP will retain capable vegetation outside of the wire zone up to 15 feet tall to facilitate future tapering that will allow capable vegetation up to 35 feet tall in areas outside of the wire zone.

12.0 Locating and Marking Buffers and Habitats

A database will be maintained, including maps and GIS shapefiles, of the buffers, restricted habitats, and sensitive areas and their locations relative to the nearest structure (pole) or road location. The distance and direction from the nearest structure to the sensitive area will be included with the name of the area and the structure number. All structures along the transmission line corridor will be numbered at the time of construction.

To aid in identifying restricted areas, buffers and restricted habitats will be located and demarcated in the field using brightly colored flagging or signage prior to the initiation of clearing and construction activities along the transmission line corridor. Alternatively, use of GIS data and GPS equipment may be used to provide accurate location of resources and associated buffers. If desired, personnel may permanently demarcate restricted habitats to aid in construction activities. Personnel working on the transmission line corridor will be provided a copy of this VCP. Use of the VCP in conjunction with the natural resource maps and Plan & Profile drawings will enable construction contractors to locate and mark restricted areas in the field.

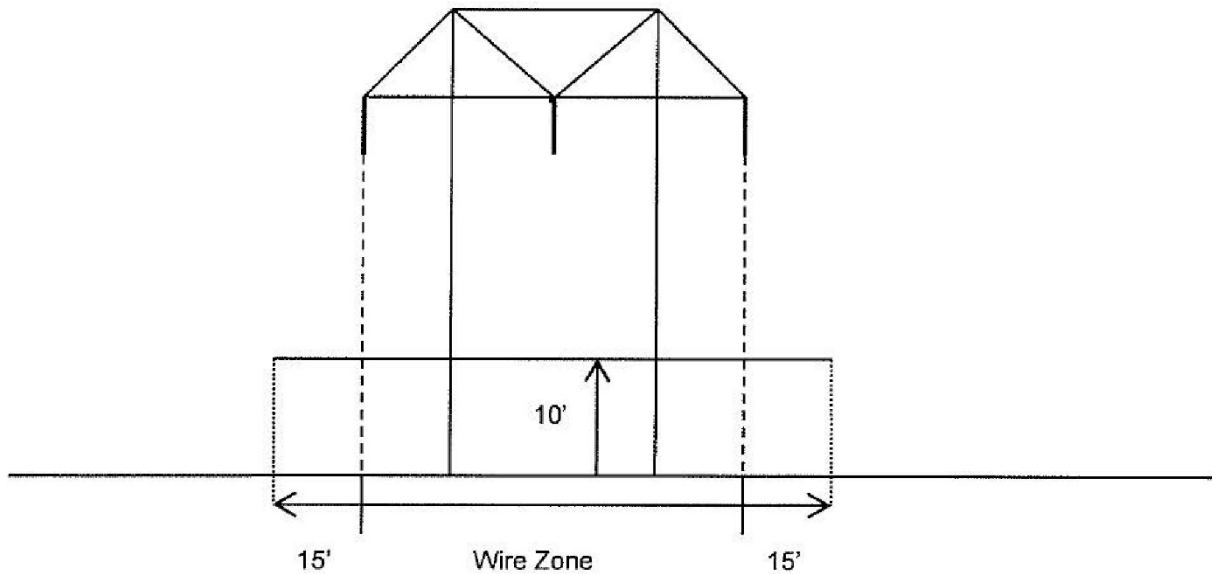
13.0 Personnel Training

Personnel who will conduct vegetation clearing on the transmission line corridor will receive appropriate environmental training before being allowed access to the transmission line corridor. Construction and clearing personnel will be required to review this VCP prior to the training and before conducting any clearing or construction activities. The level of training will be dependent on the duties of the personnel. The training will be given prior to the start of clearing or construction activities. Replacement or new clearing or construction personnel that did not receive the initial training will receive similar training prior to performing any activities on the transmission line corridor.

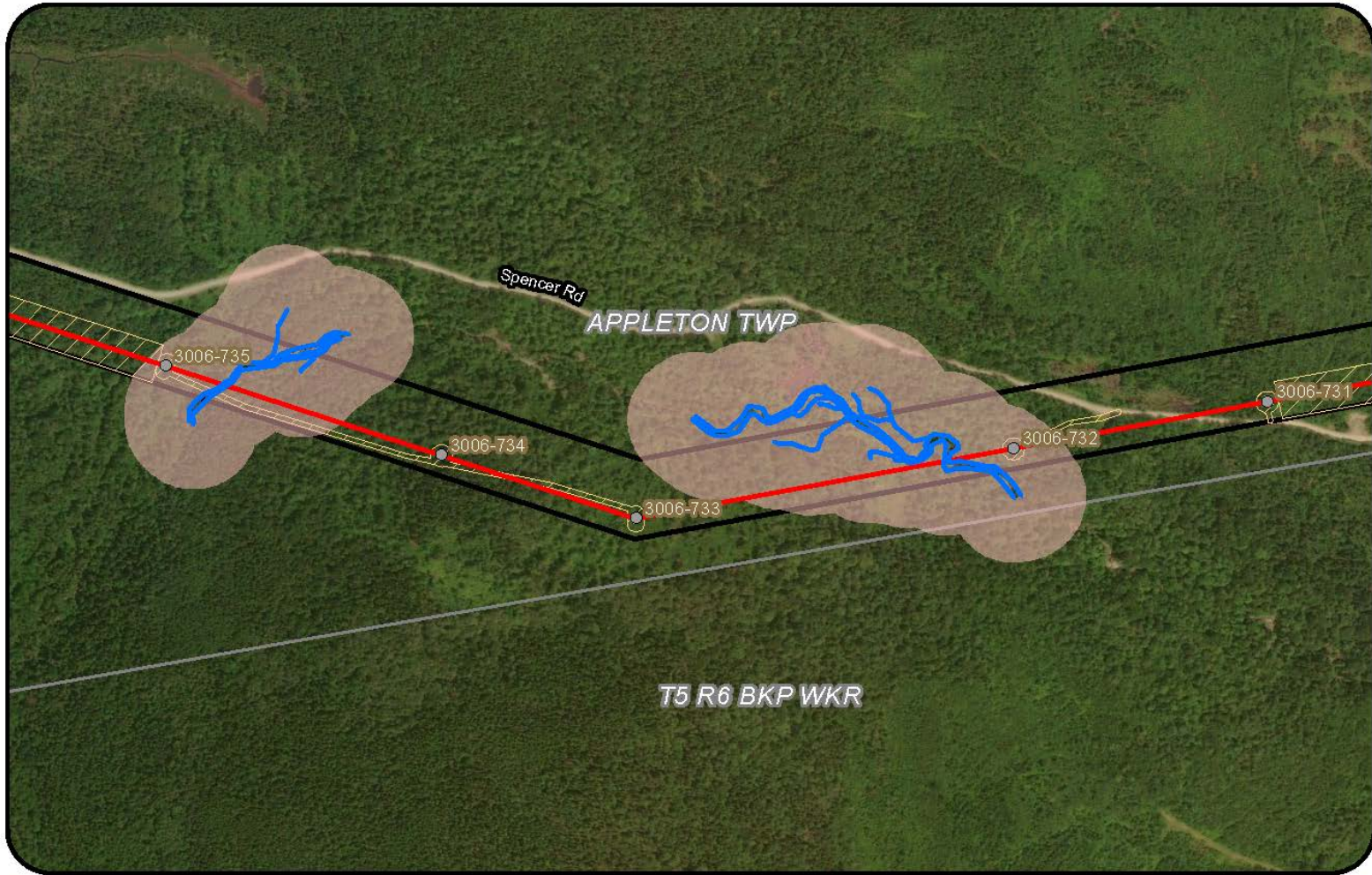
The training session will consist of a review of the buffers and restricted habitats, the respective vegetation clearing requirements and restrictions for each, and a review of how these areas and resources can be located in the field. Training will include familiarization with and use of GIS

information and sensitive natural resource identification in conjunction with the contents of this VCP, as well as basic causes, preventive and remedial measures for contamination, and erosion and sedimentation of water resources.

Figure 1



1. Capable species, regardless of height, are cut back to ground level or treated with herbicides within the entire length and width of the transmission line corridor during scheduled vegetation maintenance (every 4 years). However, within stream buffers, only capable specimens over 10 feet tall may be cut or treated (specimens at or above this height are likely to grow into the conductor safety zone prior to the next scheduled vegetation maintenance cycle).
2. All woody vegetation over 10 feet in height and inside the wire zone, whether capable or non-capable, is cut back to ground level.



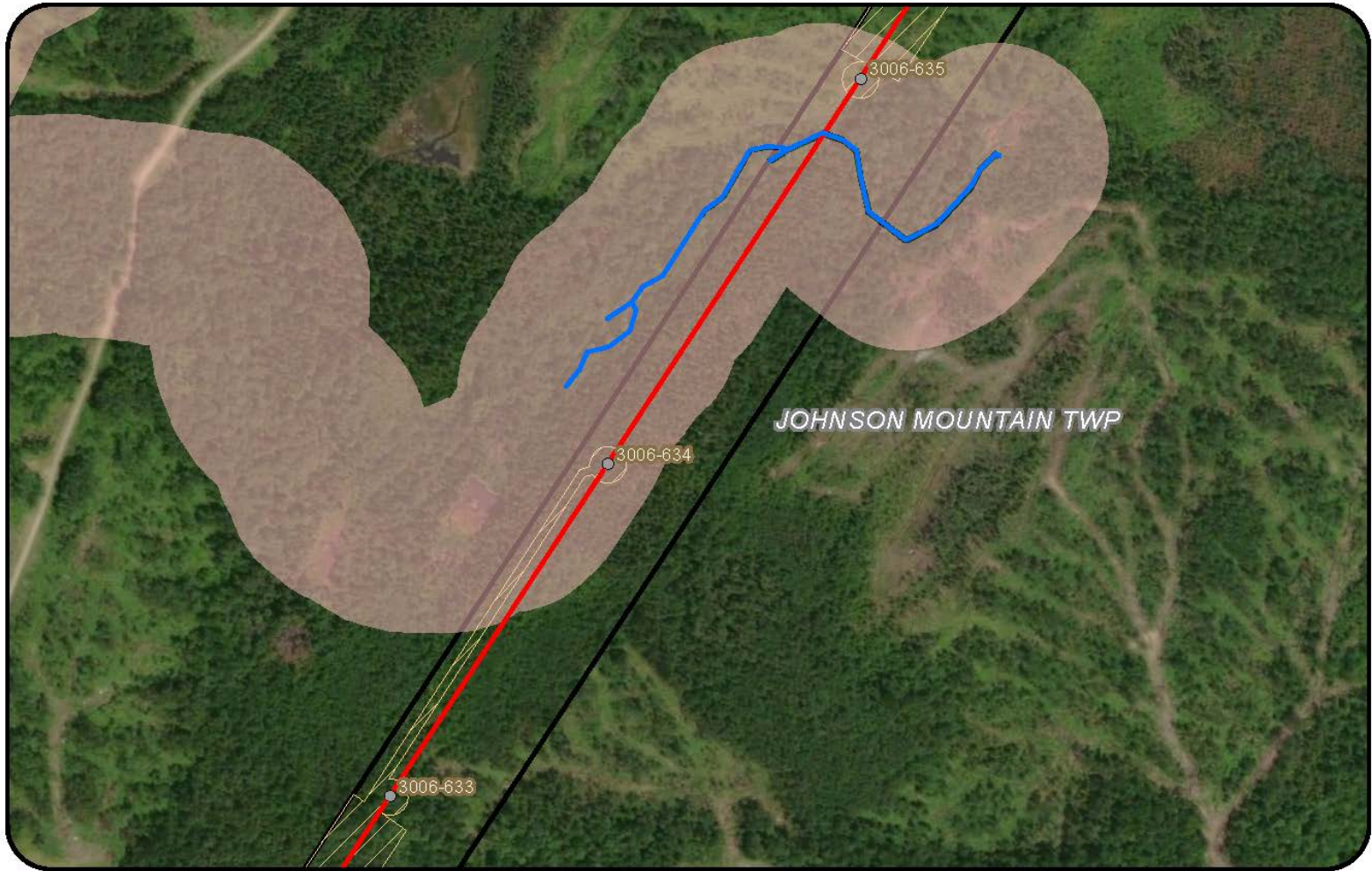
Legend

- CMP Ownership
- Project Centerline
- Proposed Structure
- Town Boundary
- Gold Brook and Tributaries
- Conservation Management Area
- Clearing Limit

New England Clean Energy Connect
 Figure 2
 Gold Brook Rare Species CMA
 500 Feet

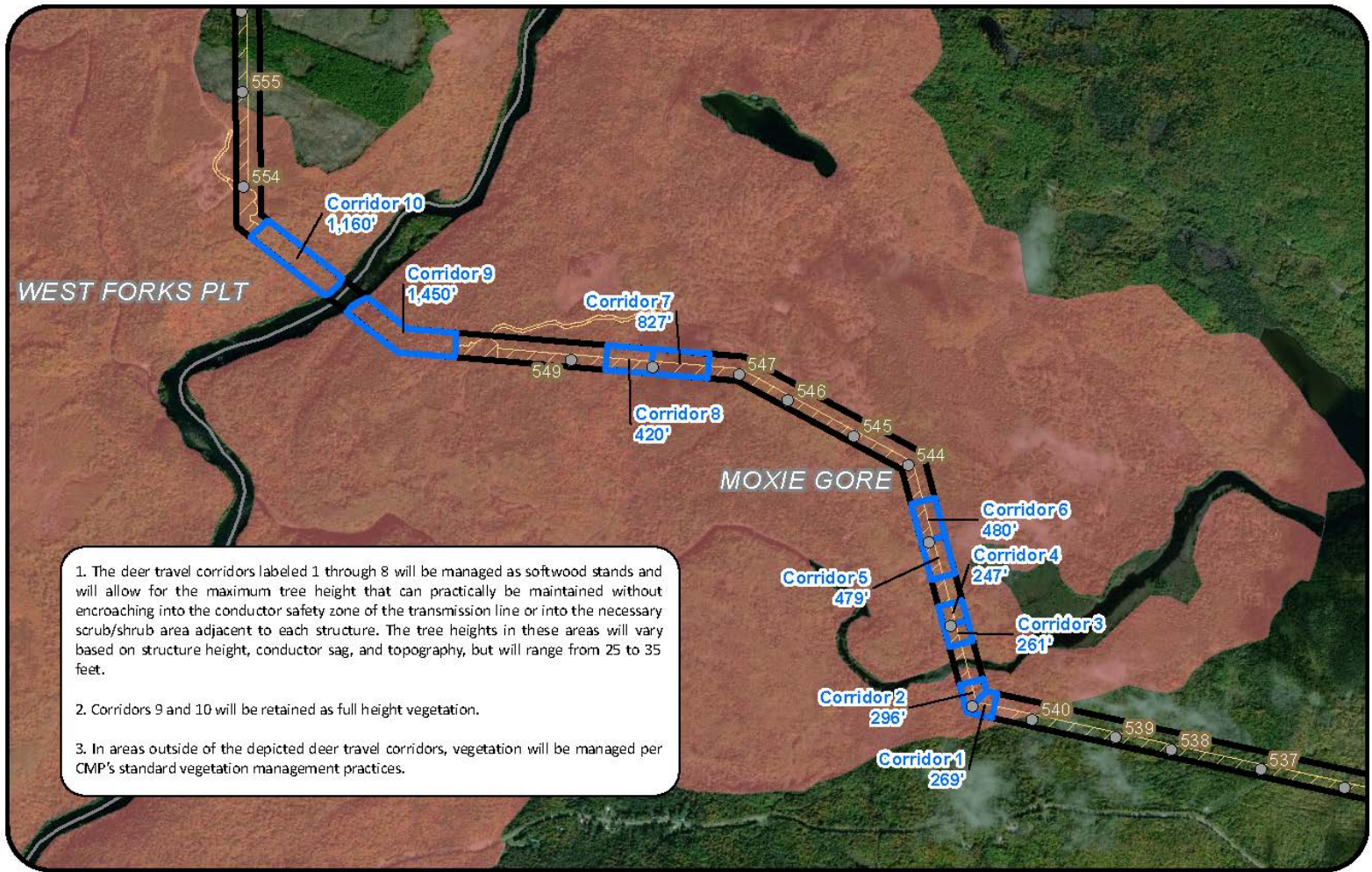


12/7/2018



Legend		 New England Clean Energy Connect Figure 3 Mountain Brook Rare Species CMA 300 Feet	
 CMP Ownership  Project Centerline  Proposed Structure  Town Boundary	 Mountain Brook and Tributaries  Conservation Management Area  Clearing Limit		

12/7/2018



1. The deer travel corridors labeled 1 through 8 will be managed as softwood stands and will allow for the maximum tree height that can practically be maintained without encroaching into the conductor safety zone of the transmission line or into the necessary scrub/shrub area adjacent to each structure. The tree heights in these areas will vary based on structure height, conductor sag, and topography, but will range from 25 to 35 feet.
2. Corridors 9 and 10 will be retained as full height vegetation.
3. In areas outside of the depicted deer travel corridors, vegetation will be managed per CMP's standard vegetation management practices.



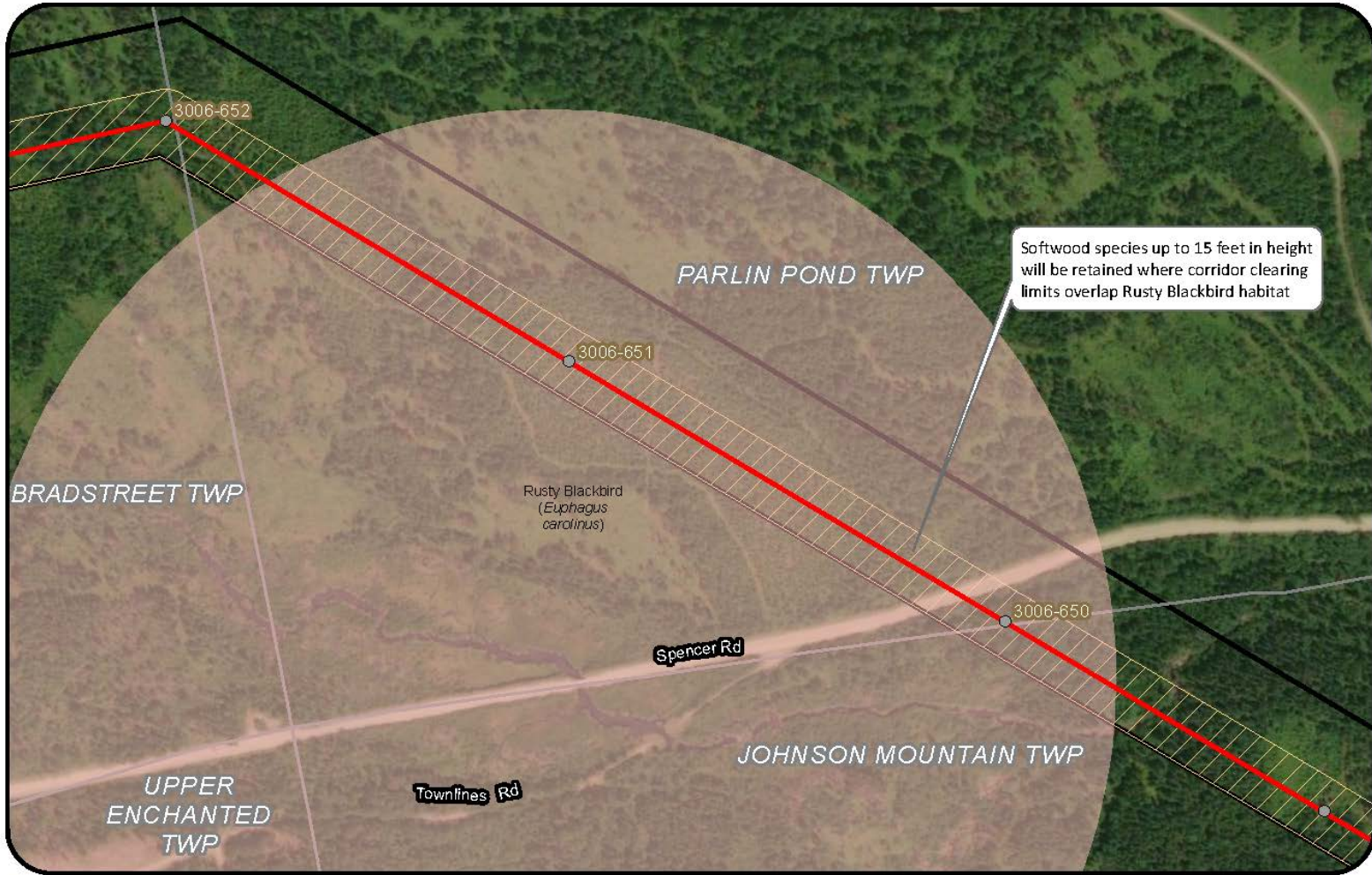
Legend

CMP Ownership	Deer Travel Corridor
Proposed Structure	Deer Wintering Area
Town Boundary	
Clearing Limit	

New England Clean Energy Connect
 Figure 4
 Upper Kennebec Deer Travel Corridors
 1,500 Feet



12/7/2018



Legend			New England Clean Energy Connect Figure 5: Rusty Blackbird Vegetation Management Area 250 Feet
CMP Ownership Project Centerline Proposed Structure Town Boundary	Rusty Blackbird Habitat Clearing Limit		



12/7/2018