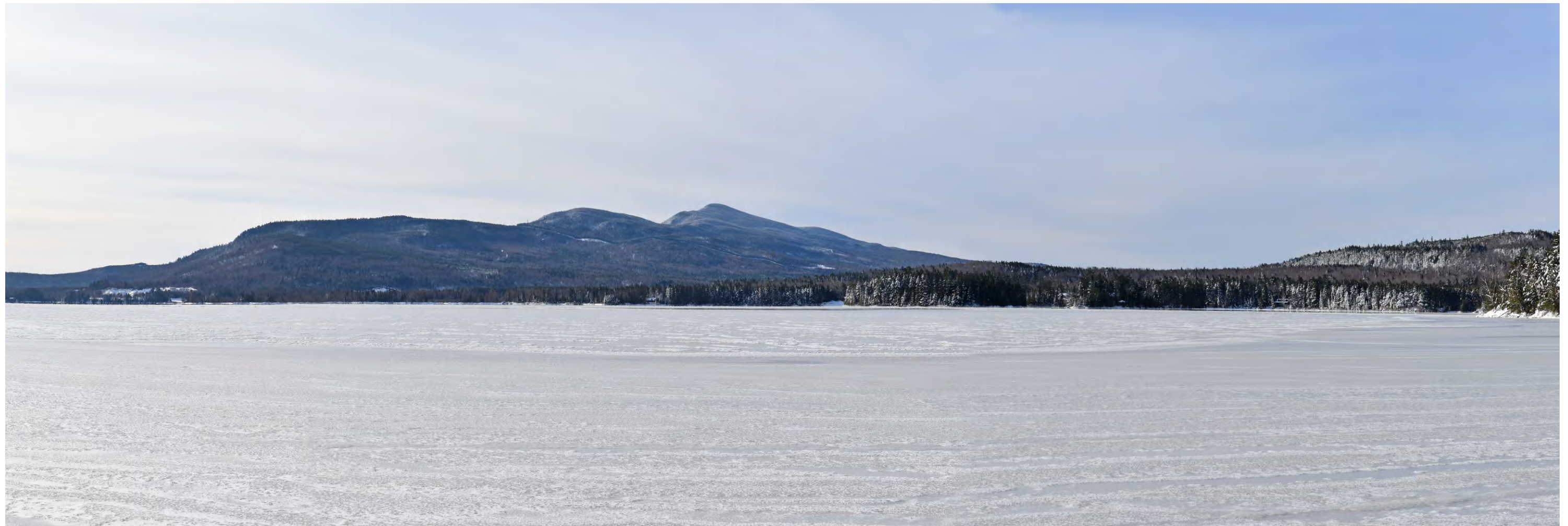
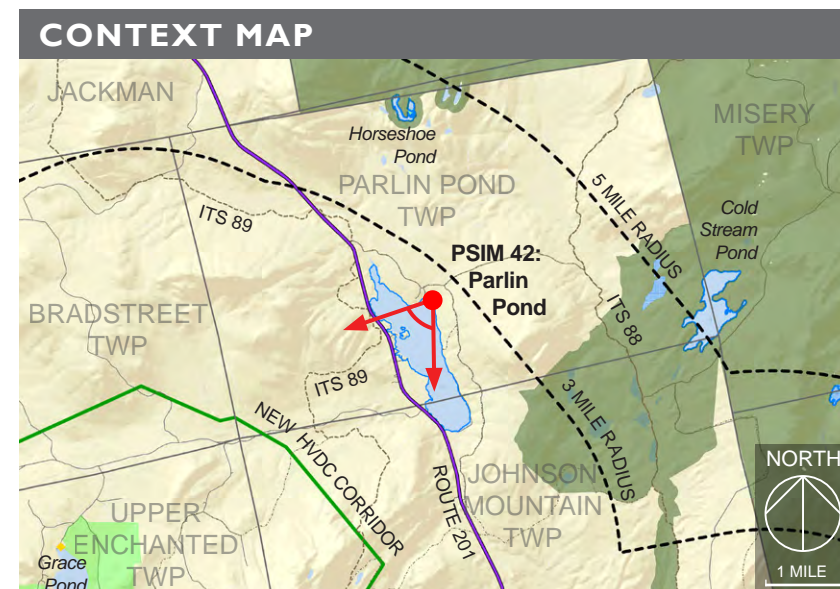


PHOTOSIMULATION 42: PARLIN POND, Parlin Pond Twp



Proposed Conditions: Panoramic view looking south to southwest from the northern end of Parlin Pond in Parlin Pond Twp toward the proposed HVDC transmission line. Five proposed HVDC structures, conductors and portions of the corridor clearing will be visible crossing the east shoulder of Coburn Mountain within 3 miles of this viewpoint. Portions of the cleared corridor will be slightly more visible in leaf-off conditions. The weathered steel HVDC structures will generally blend in with the wooded hillside. The conductors will be most visible in early morning light. Non-specular conductors will be used to minimize glare.



| TECHNICAL INFORMATION | |
|---|---|
| Typical Cross Section | Photograph / Photosimulation Information |
| Location | 45.529028°, -70.083275° |
| Viewing Direction | South to Southwest |
| Horizontal Angle of View | 74° |
| Date and Time | 11/15/18 at 10:24 am |
| Camera Focal Length | 35 mm (50 mm equiv.) |
| Camera Make/Model | Nikon D5500 |
| Photo Source | TJD&A |
| Proposed Structures Visible | 5 |
| Approximate Distance to Nearest Visible Structure | 2.7 miles |
| | |
| December 7, 2018 PAGE 1 OF 58 | |

EXISTING CONDITIONS 42A: PARLIN POND, Parlin Pond Twp



Existing Conditions: Normal view looking south from the northern end of Parlin Pond looking toward Coburn Mountain.

PHOTOSIMULATION 42A: PARLIN POND, Parlin Pond Twp



Proposed Conditions: Normal view looking south from Parlin Pond toward the proposed HVDC transmission line. Five proposed HVDC structures, conductors and portions of the corridor clearing will be visible crossing the shoulder of Coburn Mountain within 3 miles of this viewpoint.

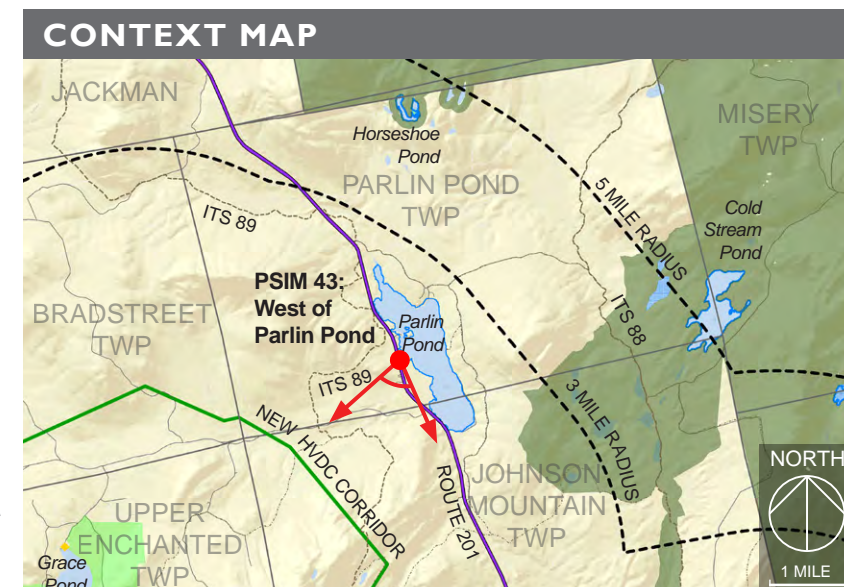
December 7, 2018

PAGE 3 OF 58

PHOTOSIMULATION 43: ROUTE 201, WEST OF PARLIN POND, Parlin Pond Twp



Proposed Conditions: Panoramic view looking southeast to southwest from Route 201 (west of Parlin Pond) in Parlin Pond Twp toward the proposed HVDC transmission line crossing the eastern shoulder of Coburn Mountain. This viewpoint along Route 201 represents the location with the highest degree of potential visibility adjacent to the open fields on the west side of Route 201. Two proposed HVDC structures, conductors, and portions of the cleared corridor will be visible at distances of 2.0 to 2.1 miles from this viewpoint. One structure will be silhouetted against the sky and one will blend with the wooded hillside. The visible portion of cleared corridor, which follows the profile of Coburn Mountain, will be more noticeable during leaf-off conditions. The conductors will be most noticeable in early morning light.



| TECHNICAL INFORMATION | |
|---|---|
| Typical Cross Section | Photograph / Photosimulation Information |
| Location | 45.515963°, -70.092260° |
| Viewing Direction | Southeast to Southwest |
| Horizontal Angle of View | 79° |
| Date and Time | 11/12/18 at 2:27 pm |
| Camera Focal Length | 35 mm (50 mm equiv.) |
| Camera Make/Model | Nikon D5500 |
| Photo Source | TJD&A |
| Proposed Structures Visible | 2 |
| Approximate Distance to Nearest Visible Structure | 2.0 miles |
| | |
| December 7, 2018 PAGE 4 OF 58 | |



Existing Conditions: Normal view looking south from Route 201 in Parlin Pond Twp toward the eastern shoulder of Coburn Mountain.

PHOTOSIMULATION 43A: ROUTE 201, WEST OF PARLIN POND, Parlin Pond Twp

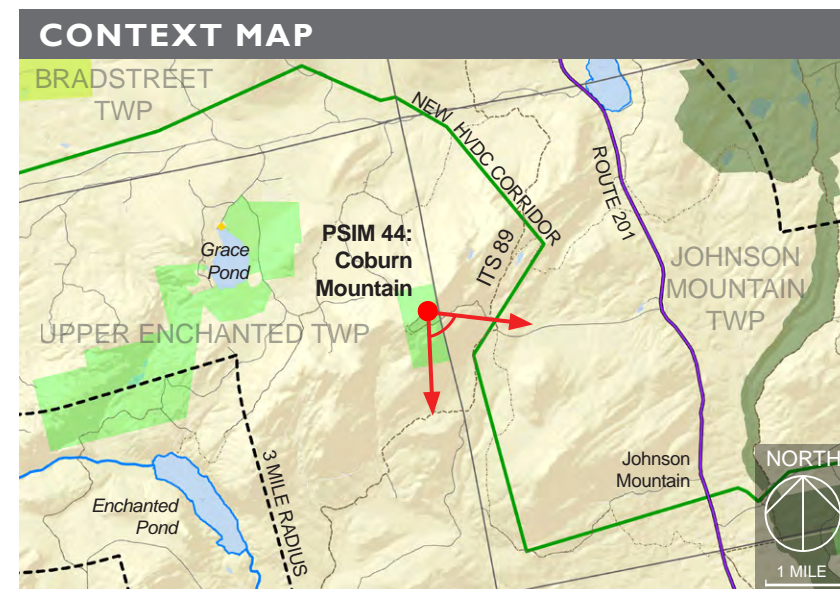
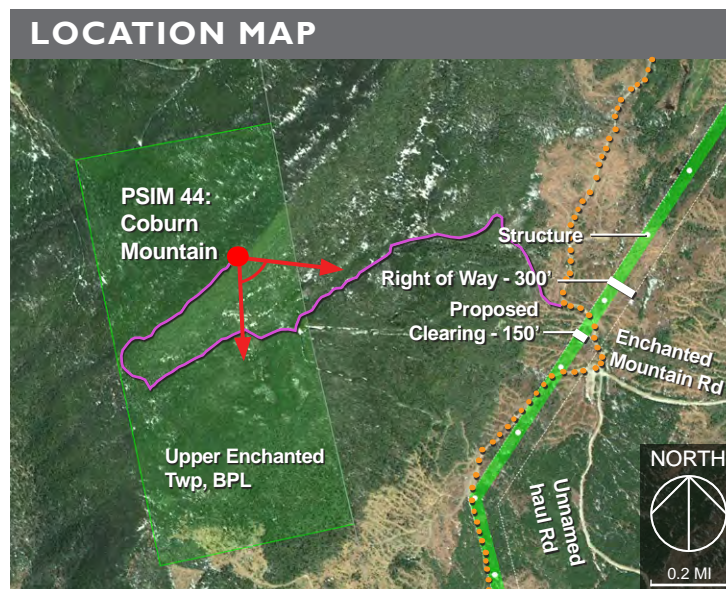


Proposed Conditions: Normal view looking south from Route 201 in Parlin Pond Twp toward the proposed HVDC transmission line. Two proposed HVDC structures, conductors, and portions of the cleared corridor will be visible at distances of 2.0 to 2.1 miles from this viewpoint.

PHOTOSIMULATION 44: COBURN MOUNTAIN, OBSERVATION TOWER, Upper Enchanted Twp



Proposed Conditions: Panoramic view looking east to south from the observation tower at the summit of Coburn Mountain in Upper Enchanted Twp toward the proposed HVDC transmission line. The new 150 ft wide corridor clearing will be visible in the midground on the west side of Johnson Mountain and in the background to the southeast. The closest visible structure will be 1.0 miles from this viewpoint. A local snowmobile trail to the summit is accessed off ITS 89. During snow cover conditions, the most visible portion of the Project will be the cleared corridor from the summit. The corridor will be seen in context with the active timber harvesting areas and haul roads that are typical in a working forest.



| TECHNICAL INFORMATION | |
|---|---|
| Typical Cross Section | Photograph / Photosimulation Information |
| Location | 45.468580°, -70.126432° |
| Viewing Direction | East to South |
| Horizontal Angle of View | 73° |
| Date and Time | 11/11/18 at 4:08 pm |
| Camera Focal Length | 35 mm (50 mm equiv.) |
| Camera Make/Model | Nikon D5500 |
| Photo Source | TJD&A |
| Proposed Structures Visible | 11 within 3 miles |
| Approximate Distance to Nearest Visible Structure | 1.0 mile |
| | |
| December 7, 2018 PAGE 7 OF 58 | |

EXISTING CONDITIONS 44A: COBURN MOUNTAIN, OBSERVATION TOWER, Upper Enchanted Twp



Existing Conditions: Normal view looking east from the observation tower at the summit of Coburn Mountain. Evidence of active timber harvesting (patch cuts and haul roads) are visible in the midground on Johnson Mountain off an unnamed road in Johnson Mountain Twp.

PHOTOSIMULATION 44A: COBURN MOUNTAIN, OBSERVATION TOWER, Upper Enchanted Twp



Proposed Conditions: Normal view looking east from the observation tower at the summit of Coburn Mountain toward the proposed HVDC transmission line. The proposed corridor clearing and HVDC transmission line structures will be minimally visible in the background, to the left of Johnson Mountain in the photograph.

EXISTING CONDITIONS 44B: COBURN MOUNTAIN, OBSERVATION TOWER, Upper Enchanted Twp



Existing Conditions: Normal view looking south from the observation tower at the summit of Coburn Mountain. Evidence of active timber harvesting (patch cuts and haul roads) are visible in the midground on Johnson Mountain off an unnamed road in Johnson Mountain Twp.

PHOTOSIMULATION 44B: COBURN MOUNTAIN, OBSERVATION TOWER, Upper Enchanted Twp

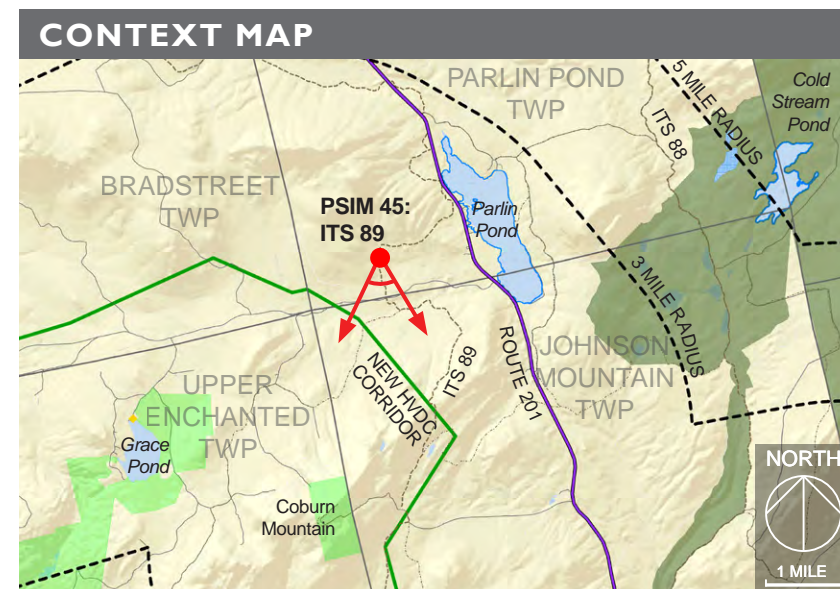
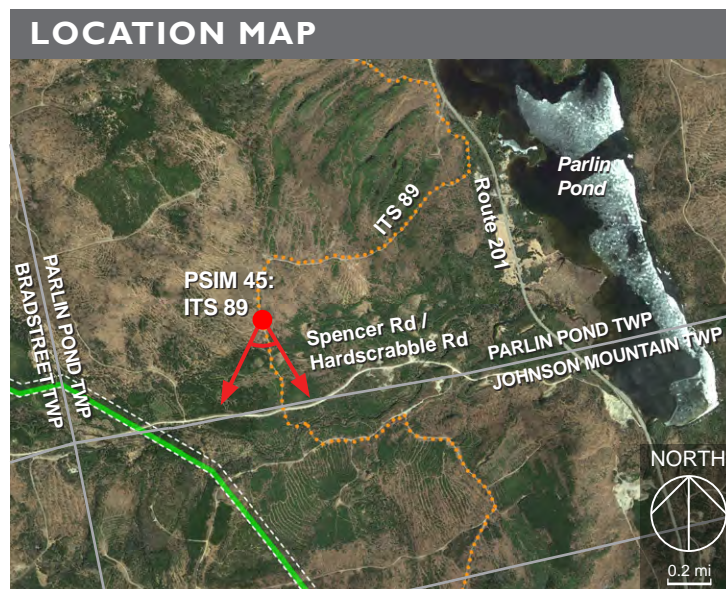


Proposed Conditions: Normal view looking south from the observation tower at the summit of Coburn Mountain toward the proposed HVDC transmission line. The new 150 ft wide corridor clearing will be visible in the midground on the west side of Johnson Mountain. The closest visible structure and conductors will be 1.0 miles from this viewpoint.

PHOTOSIMULATION 45: ITS 89, Parlin Pond Twp



Proposed Conditions: Panoramic view looking southeast to southwest toward the proposed HVDC transmission line from ITS 89, north of Spencer Road (Hardscrabble Road) in Parlin Pond Twp on Weyerhaeuser land. Six proposed HVDC structures, conductors, and portions of the corridor clearing will be visible crossing the shoulder of Coburn Mountain at distances of 1.0 to 1.9 miles from this viewpoint. The ITS trail was being maintained as an active haul road by Weyerhaeuser at time of photo.



| TECHNICAL INFORMATION | |
|---|---|
| Typical Cross Section | Photograph / Photosimulation Information |
| Location | 45.511767°, -70.115843° |
| Viewing Direction | Southeast to Southwest |
| Horizontal Angle of View | 71° |
| Date and Time | 11/12/18 at 2:39 pm |
| Camera Focal Length | 35 mm (50 mm equiv.) |
| Camera Make/Model | Nikon D5500 |
| Photo Source | TJD&A |
| Proposed Structures Visible | 6 |
| Approximate Distance to Nearest Visible Structure | 1.0 miles |
| | |
| December 7, 2018 PAGE 12 OF 58 | |



Existing Conditions: Normal view looking south from ITS 89 north of Spencer Road (Hardscrabble Road) on Weyerhaeuser land toward Coburn Mountain. Viewpoint is located in an active timber harvesting area.

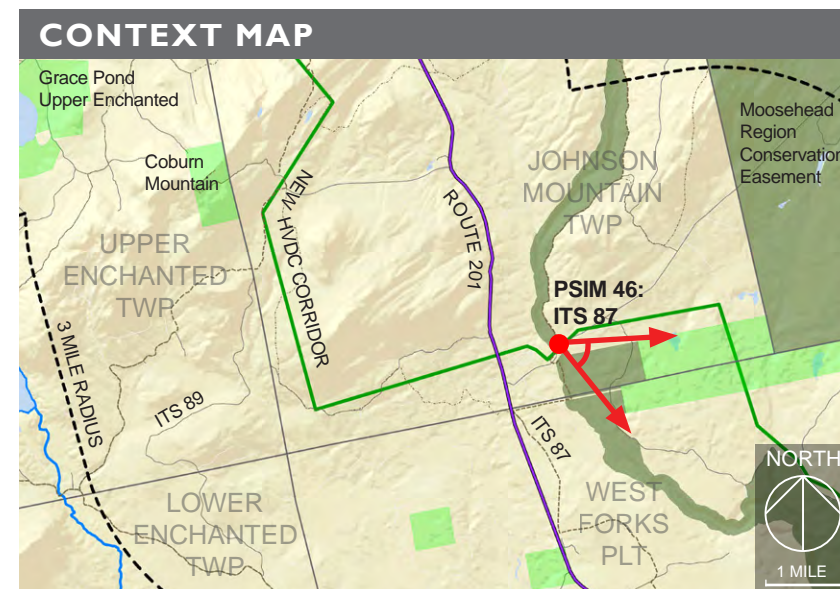
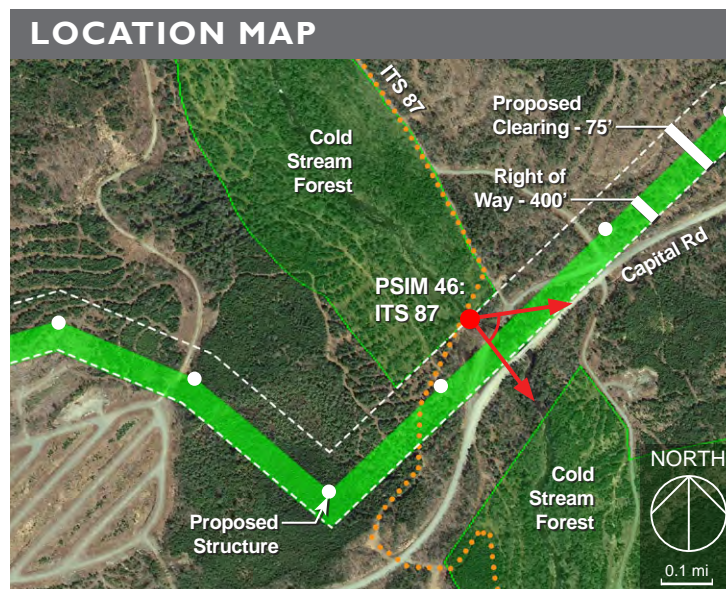


Proposed Conditions: Normal view looking south from ITS 89 on Weyerhaeuser land toward the proposed HVDC transmission line. Six proposed HVDC structures, conductors and portions of the corridor clearing will be visible crossing the shoulder of Coburn Mountain at distances of 1.0 to 1.9 miles from this viewpoint.

PHOTOSIMULATION 46: ITS 87, Johnson Mountain Twp



Proposed Conditions: Panoramic view looking east to southeast on the ITS 87 bridge over Cold Stream (in the Cold Stream Forest Parcel in Johnson Mountain Twp) toward the Capital Road bridge and the proposed HVDC transmission line. Evergreen vegetation on the north east side of the stream will screen the Project looking east. There will be a filtered views of one structure through the hardwoods in leaf-off conditions looking southeast. Conductors will be visible over Cold Stream at a distance of 250 ft from this viewpoint (visible through branches on overhanging tree at the top of the image). Capital Road and the existing bridge will be more visible from this viewpoint as a result of the corridor clearing. See photos in Attachment J, Capitol Road Photographs in the October 19, 2018 MDEP/LUPC Response.



| TECHNICAL INFORMATION | |
|---|---|
| Typical Cross Section | Photograph / Photosimulation Information |
| Location | 45.436472°, -70.037492° |
| Viewing Direction | East to Southeast |
| Horizontal Angle of View | 93° |
| Date and Time | 11/12/18 at 11:43 pm |
| Camera Focal Length | 35 mm (50 mm equiv.) |
| Camera Make/Model | Nikon D5500 |
| Photo Source | TJD&A |
| Proposed Structures Visible | 1 |
| Approximate Distance to Nearest Visible Structure | 500 ft |
| | |
| December 7, 2018 PAGE 15 OF 58 | |



Existing Conditions: Normal view looking east on the ITS 87 bridge over Cold Stream toward the Capital Road bridge, within the Cold Stream Forest parcel in Johnson Mountain Twp.

PHOTOSIMULATION 46A: ITS 87, Johnson Mountain Twp



Proposed Conditions: Normal view looking east on the ITS 87 bridge over Cold Stream toward the Capital Road bridge, and the proposed HVDC transmission line. Conductors will be visible crossing above Cold Stream at a distance of 250 feet from this viewpoint.



Existing Conditions: Normal view looking southeast on the ITS 87 bridge over Cold Stream in the Cold Stream Forest parcel in Johnson Mountain Twp.

PHOTOSIMULATION 46B: ITS 87, Johnson Mountain Twp

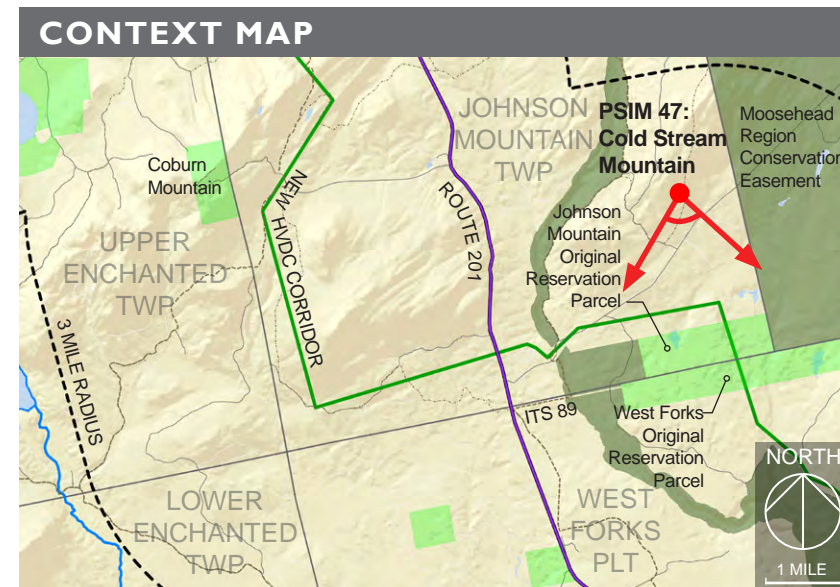
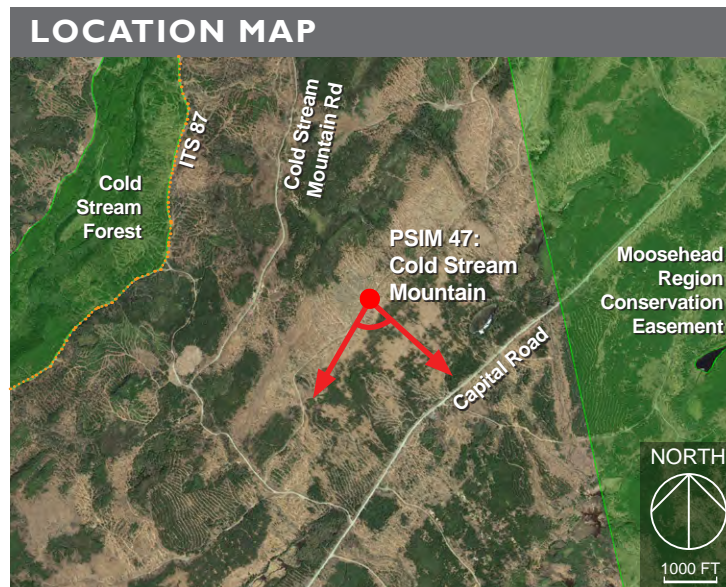


Proposed Conditions: Normal view looking southeast on the ITS 87 bridge over Cold Stream toward the proposed HVDC transmission line. One HVDC structure will be visible 500 ft to the southeast filtered through the hardwood vegetation.

PHOTOSIMULATION 47: COLD STREAM MOUNTAIN, Local Snowmobile Trail, Johnson Mountain Twp



Proposed Conditions: Panoramic view looking southeast to southwest toward the proposed HVDC transmission line from a haul road/local snowmobile trail on Weyerhaeuser land, on Cold Stream Mountain in Johnson Mountain Twp. The closest visible structure is 1.5 miles from this viewpoint. Ten structures will be visible within 3 miles. The most visible portion of the Project will be a 1.7 mile section of the corridor located in the Johnson Mountain and West Forks Original Reservation Parcels. The view of corridor will likely disappear within approximately five years as the trees in the foreground grow.



| TECHNICAL INFORMATION | | | | | | | | | | | | | | | | | | | |
|---|--|----------|-------------------------|-------------------|------------------------|--------------------------|-----|---------------|---------------------|---------------------|----------------------|-------------------|-------------|--------------|-------|-----------------------------|----|---|-----------|
| Typical Cross Section | Photograph / Photosimulation Information | | | | | | | | | | | | | | | | | | |
| | <table border="1"> <tr> <td>Location</td> <td>45.465118°, -70.005192°</td> </tr> <tr> <td>Viewing Direction</td> <td>Southeast to Southwest</td> </tr> <tr> <td>Horizontal Angle of View</td> <td>80°</td> </tr> <tr> <td>Date and Time</td> <td>11/12/18 at 1:13 pm</td> </tr> <tr> <td>Camera Focal Length</td> <td>35 mm (50 mm equiv.)</td> </tr> <tr> <td>Camera Make/Model</td> <td>Nikon D5500</td> </tr> <tr> <td>Photo Source</td> <td>TJD&A</td> </tr> <tr> <td>Proposed Structures Visible</td> <td>10</td> </tr> <tr> <td>Approximate Distance to Nearest Visible Structure</td> <td>1.5 miles</td> </tr> </table> | Location | 45.465118°, -70.005192° | Viewing Direction | Southeast to Southwest | Horizontal Angle of View | 80° | Date and Time | 11/12/18 at 1:13 pm | Camera Focal Length | 35 mm (50 mm equiv.) | Camera Make/Model | Nikon D5500 | Photo Source | TJD&A | Proposed Structures Visible | 10 | Approximate Distance to Nearest Visible Structure | 1.5 miles |
| Location | 45.465118°, -70.005192° | | | | | | | | | | | | | | | | | | |
| Viewing Direction | Southeast to Southwest | | | | | | | | | | | | | | | | | | |
| Horizontal Angle of View | 80° | | | | | | | | | | | | | | | | | | |
| Date and Time | 11/12/18 at 1:13 pm | | | | | | | | | | | | | | | | | | |
| Camera Focal Length | 35 mm (50 mm equiv.) | | | | | | | | | | | | | | | | | | |
| Camera Make/Model | Nikon D5500 | | | | | | | | | | | | | | | | | | |
| Photo Source | TJD&A | | | | | | | | | | | | | | | | | | |
| Proposed Structures Visible | 10 | | | | | | | | | | | | | | | | | | |
| Approximate Distance to Nearest Visible Structure | 1.5 miles | | | | | | | | | | | | | | | | | | |
| | | | | | | | | | | | | | | | | | | | |
| | December 7, 2018 PAGE 20 OF 58 | | | | | | | | | | | | | | | | | | |



Existing Conditions: Normal view looking south toward Moxie Mountain (center of image) from a haul road/local snowmobile trail on Weyerhaeuser land, on Cold Stream Mountain in Johnson Mountain Twp.

PHOTOSIMULATION 47A: COLD STREAM MOUNTAIN, Local Snowmobile Trail, Johnson Mountain Twp

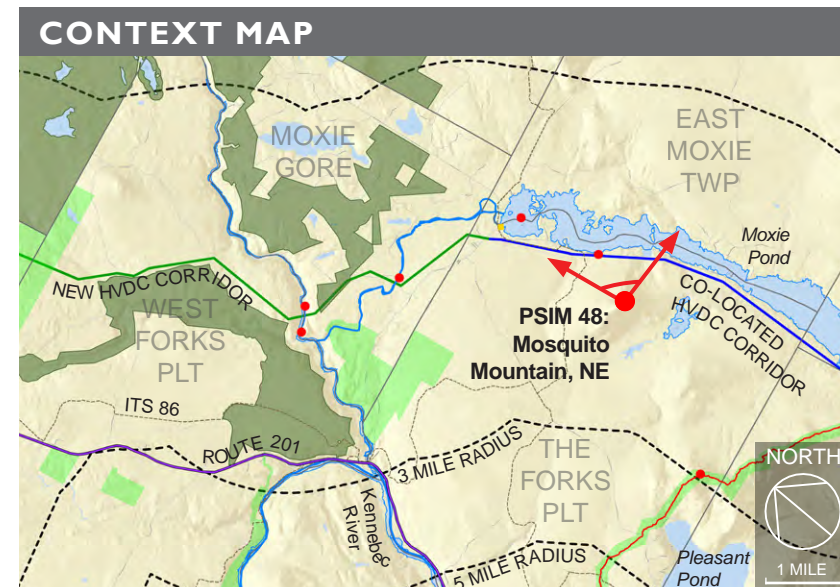
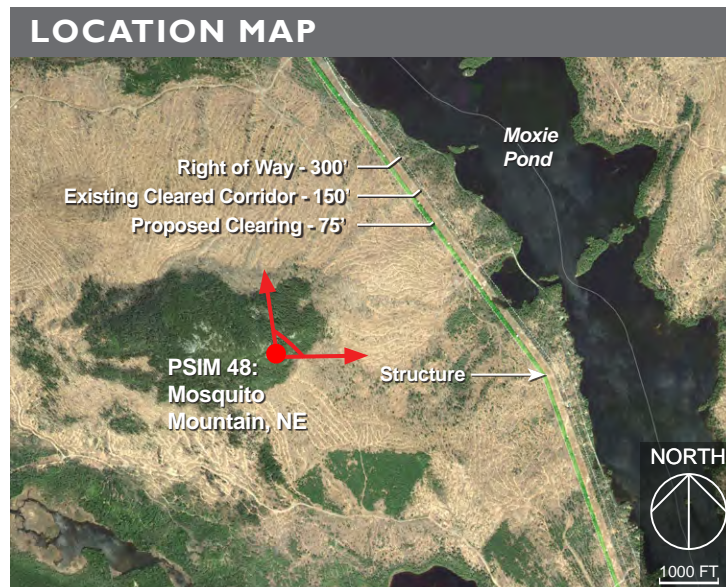


Proposed Conditions: Normal view looking south toward the proposed HVDC transmission line from a haul road/local snowmobile trail on Weyerhaeuser land, on Cold Stream Mountain. The closest visible structure is 1.5 miles from this viewpoint. Ten structures will be visible within 3 miles of this viewpoint. The most visible portion of the Project will be a 1.7 mile section of the corridor located in the Johnson Mountain and West Forks Parcels.

PHOTOSIMULATION 48: MOSQUITO MOUNTAIN - Northeast, The Forks Plt



Proposed Conditions: Panoramic view looking north to east toward the proposed co-located HVDC transmission line from the eastern overlook on Mosquito Mountain, on land owned by Bayroot LLC. The existing 150 ft wide transmission line corridor clearing will be widened by 75 ft on the western side to accommodate the proposed HVDC transmission line. Big Moose Mountain is visible in the center of the image. Moxie Pond is visible across the entire image with Black Narrows on the right side of the image. A total of seventeen HVDC structures in the cleared corridor would be visible from this viewpoint at distances of 0.7 to 3.0 miles. Weathering steel HVDC structures have been selected to blend with the surrounding vegetation. The cleared corridor will be more visible in leaf-off conditions; the majority of users visit the summit between May and October according to Mosquito Mountain log books.



TECHNICAL INFORMATION

| Typical Cross Section | | Photograph / Photosimulation Information | |
|-------------------------------------|--|---|-------------------------|
| | | Location | 45.314198°, -69.864037° |
| | | Viewing Direction | North to East |
| | | Horizontal Angle of View | 103° |
| | | Date and Time | 11/15/18 at 1:06 pm |
| | | Camera Focal Length | 35 mm (50 mm equiv.) |
| | | Camera Make/Model | Nikon D5500 |
| | | Photo Source | TJD&A |
| | | Proposed Structures Visible | 17 |
| | | Approximate Distance to Nearest Visible Structure | 0.7 miles |
| | | | |
| December 7, 2018 PAGE 23 OF 58 | | | |

EXISTING CONDITIONS 48A: MOSQUITO MOUNTAIN - Northeast, The Forks Plt



Existing Conditions: Normal view looking north toward the existing 115 kV transmission line and the northern end of Moxie Pond, from Mosquito Mountain on land owned by Bayroot LLC. The existing transmission line corridor and Indian Pond Road to Harris Dam are visible on the left side of the image, north of Moxie Pond, and is not part of the NECEC Project.

PHOTOSIMULATION 48A: MOSQUITO MOUNTAIN - Northeast, The Forks Plt



Proposed Conditions: Normal view looking north toward the proposed co-located HVDC transmission line from Mosquito Mountain, on land owned by Bayroot LLC. The existing 150 ft wide transmission line corridor clearing will be widened by 75 ft on the western side to accommodate the proposed co-located HVDC transmission line. Twelve structures will be visible looking in this direction at distances of 1.1 to 3.0 miles

December 7, 2018

PAGE 25 OF 58

EXISTING CONDITIONS 48B: MOSQUITO MOUNTAIN - Northeast, The Forks Plt



Existing Conditions: Normal view looking northeast from Mosquito Mountain on land owned by Bayroot LLC. Burnt Jacket Island in Moxie Pond is visible right of center in image. The existing 115 kV transmission line is mostly screened by vegetation in this view.

PHOTOSIMULATION 48B: MOSQUITO MOUNTAIN - Northeast, The Forks Pt



Proposed Conditions: Normal view looking northeast toward the proposed co-located HVDC transmission line from Mosquito Mountain, on land owned by Bayroot LLC. The existing 150 ft wide transmission line corridor clearing will be widened by 75 ft on the western side to accommodate the co-located HVDC transmission line. Three structures, conductors and portions of the cleared corridor will be visible from this viewpoint at distances of 0.7 to 0.9 miles.

EXISTING CONDITIONS 48C: MOSQUITO MOUNTAIN - Northeast, The Forks Plt



Existing Conditions: Normal view looking east from Mosquito Mountain on land owned by Bayroot LLC. Moxie Pond is visible across the entire image with Black Narrows on right in image. The existing 115 kV transmission line and Troutdale Road are visible in the bottom 1/3 of the photograph.

PHOTOSIMULATION 48C: MOSQUITO MOUNTAIN - Northeast, The Forks Plt



Proposed Conditions: Normal view looking east toward the proposed co-located HVDC transmission line from Mosquito Mountain, on land owned by Bayroot LLC. The existing 150 ft wide transmission line corridor clearing will be widened by 75 ft on the western side to accommodate the co-located HVDC transmission line. Two structures and conductors will be visible from this viewpoint at distances of 0.7 to 0.75 miles.

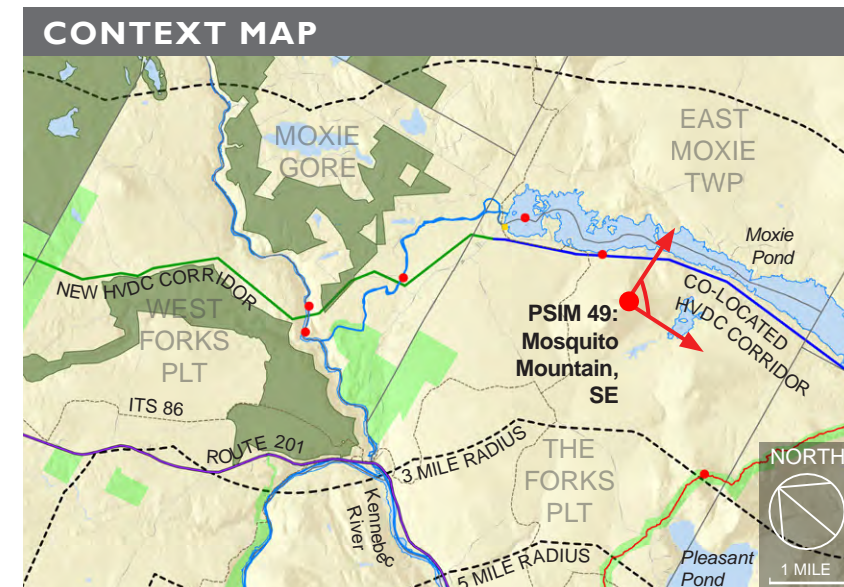
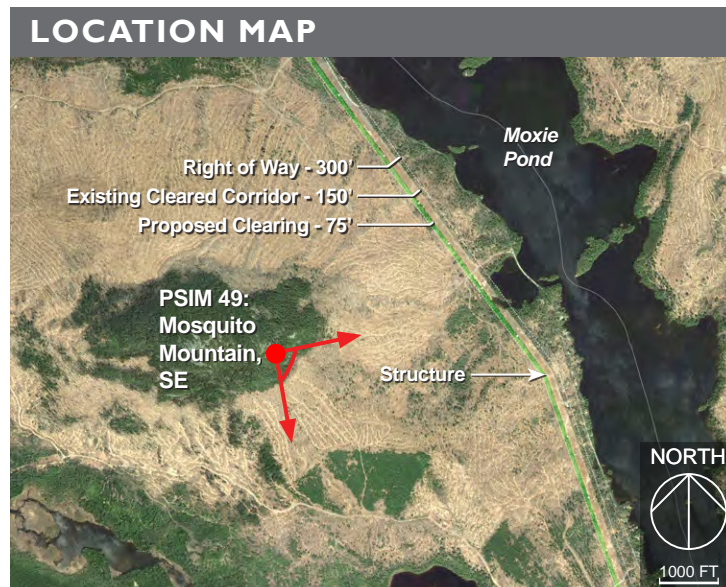
December 7, 2018

PAGE 29 OF 58

PHOTOSIMULATION 49: MOSQUITO MOUNTAIN - Southeast, The Forks Plt



Proposed Conditions: Continued panoramic view (from Photosimulation 48) looking east to south toward the proposed co-located HVDC transmission line from the eastern overlook on Mosquito Mountain, on land owned by Bayroot LLC. The existing 150 ft wide transmission line corridor clearing will be widened by 75 ft on the western side to accommodate the proposed HVDC transmission line. Bald Mountain is visible in the center of the image. A total of thirteen proposed HVDC structures and conductors would be visible from this viewpoint at distances of 0.7 to 3.0 miles. Weathering steel HVDC structures have been selected to blend with the surrounding vegetation. The cleared corridor will be more visible in leaf-off conditions; the majority of users visit the summit between May and October according to Mosquito Mountain log books.



TECHNICAL INFORMATION

| Typical Cross Section | | Photograph / Photosimulation Information | |
|-------------------------------------|--|---|-------------------------|
| <p>TYPICAL VIEW LOOKING SOUTH</p> | | Location | 45.314198°, -69.864037° |
| | | Viewing Direction | East to South |
| | | Horizontal Angle of View | 92° |
| | | Date and Time | 11/15/18 at 1:06 pm |
| | | Camera Focal Length | 35 mm (50 mm equiv.) |
| | | Camera Make/Model | Nikon D5500 |
| | | Photo Source | TJD&A |
| | | Proposed Structures Visible | 13 within 3 miles |
| | | Approximate Distance to Nearest Visible Structure | 0.8 miles |
| | | | |
| December 7, 2018 PAGE 30 OF 58 | | | |

EXISTING CONDITIONS 49A: MOSQUITO MOUNTAIN - Southeast, The Forks Plt



Existing Conditions: Normal view looking east towards the existing 115 kV transmission line and the middle of Moxie Pond, from Mosquito Mountain on land owned by Bayroot LLC.

PHOTOSIMULATION 49A: MOSQUITO MOUNTAIN - Southeast, The Forks Plt



Proposed Conditions: Normal view looking east toward the proposed co-located HVDC transmission line from Mosquito Mountain on land owned by Bayroot LLC. The existing 150 ft wide transmission line corridor clearing will be widened by 75 ft on the western side to accommodate the proposed co-located HVDC transmission line. Four proposed HVDC structures would be visible in this direction within 3 miles of this viewpoint.

December 7, 2018

PAGE 32 OF 58

EXISTING CONDITIONS 49B: MOSQUITO MOUNTAIN - Southeast, The Forks Pt



Existing Conditions: Normal view looking southeast toward the existing 115 kV transmission line from Mosquito Mountain on land owned by Bayroot LLC. Bald Mountain is visible in the center of the image.

PHOTOSIMULATION 49B: MOSQUITO MOUNTAIN - Southeast, The Forks Pt



Proposed Conditions: Normal view looking southeast toward the proposed co-located HVDC transmission line from Mosquito Mountain, on land owned by Bayroot LLC. The existing 150 ft wide transmission line corridor clearing will be widened by 75 ft on the western side to accommodate the proposed transmission line. Seven proposed HVDC structures and conductors would be visible in this direction within 3 miles of this viewpoint.

EXISTING CONDITIONS 49C: MOSQUITO MOUNTAIN - Southeast, The Forks Plt



Existing Conditions: Normal view looking east toward the existing 115 kV transmission line and Troutdale Road, from Mosquito Mountain on land owned by Bayroot LLC. Moxie Pond is visible across the entire image with Black Narrows on right.

PHOTOSIMULATION 49C: MOSQUITO MOUNTAIN - Southeast, The Forks Pt



Proposed Conditions: Normal view looking east toward the proposed co-located HVDC transmission line from Mosquito Mountain, on land owned by Bayroot LLC. The existing 150 ft wide transmission line corridor clearing will be widened by 75 ft on the western side to accommodate the proposed transmission line. Six proposed HVDC structures and conductors would be visible in this direction within 3 miles of this viewpoint.

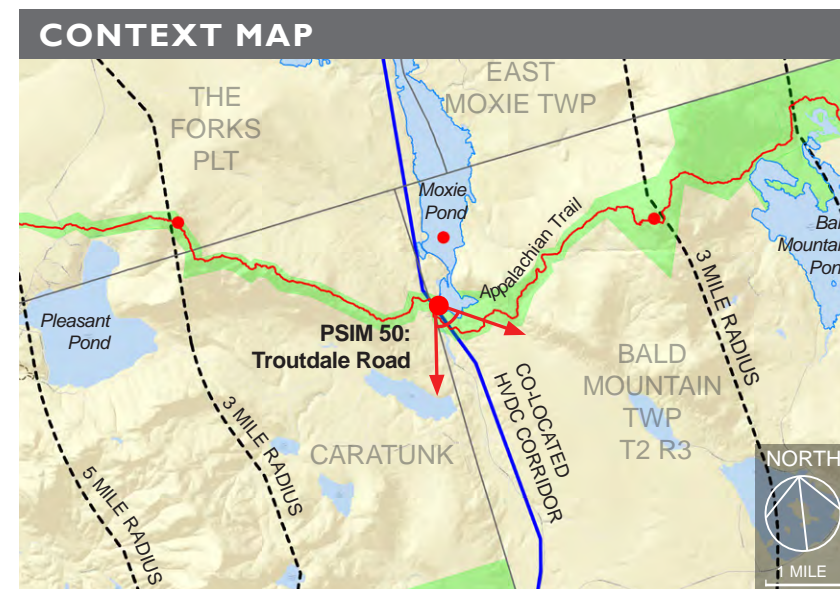
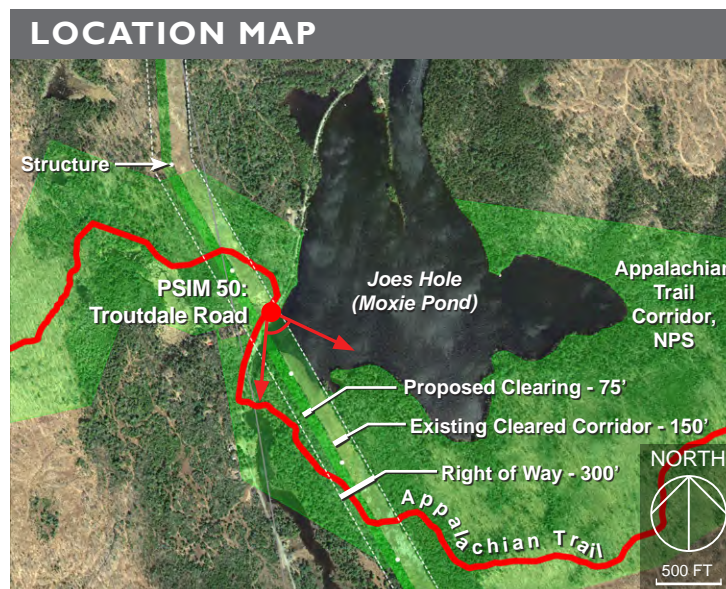
December 7, 2018

PAGE 36 OF 58

PHOTOSIMULATION 50: TROUTDALE ROAD, Bald Mountain Twp



Proposed Conditions: Panoramic view looking toward the proposed co-located HVDC transmission line from southeast to south on Troutdale Road (private road), looking toward Joes Hole (Moxie Pond) in Bald Mountain TWP. The Appalachian Trail is located on Troutdale Road for approximately 1,000 ft, including this section where the existing transmission corridor crosses. The existing 150 ft wide transmission line clearing will be widened by 75 ft on the western side to accommodate the new HVDC transmission line. Portions of six proposed HVDC structures will be visible from this viewpoint.

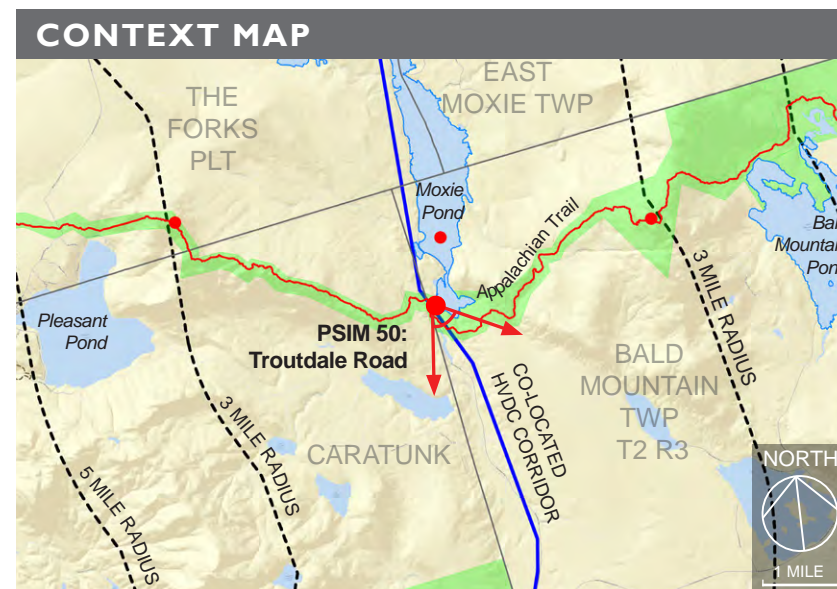
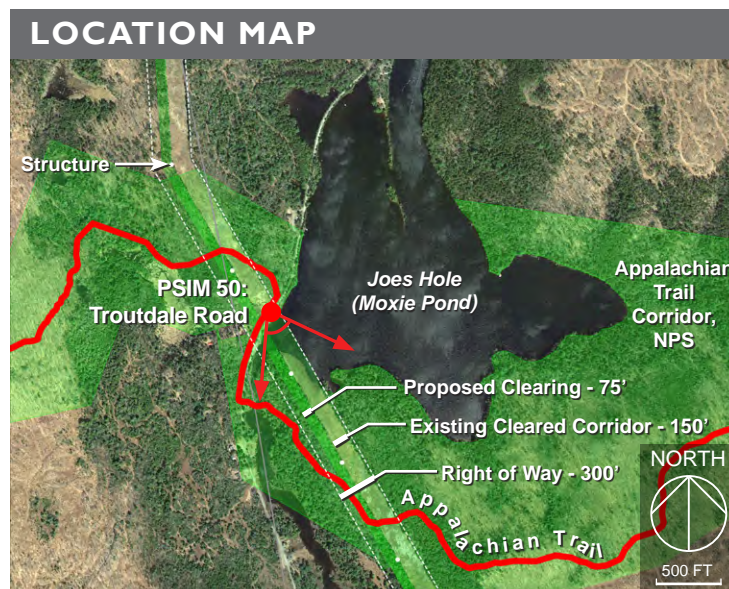


| TECHNICAL INFORMATION | |
|-------------------------------------|---|
| Typical Cross Section | Photograph / Photosimulation Information |
| | Location |
| | Viewing Direction |
| | Horizontal Angle of View |
| | Date and Time |
| | Camera Focal Length |
| | Camera Make/Model |
| | Photo Source |
| | Proposed Structures Visible |
| | Approximate Distance to Nearest Visible Structure |
| | |
| December 7, 2018 PAGE 37 OF 58 | |

PHOTOSIMULATION 50:TROUTDALE ROAD, Bald Mountain Twp



Proposed Conditions: Panoramic view on Troutdale Road (private road) looking toward Joes Hole (Moxie Pond) toward the proposed co-located HVDC transmission line with proposed Joes Hole (Moxie Pond) buffer plantings in the foreground. The Appalachian Trail is located on Troutdale Road for approximately 1,000 ft including this section where the transmission corridor crosses. The existing 150 ft wide transmission line clearing will be widened by 75 ft on the western side to accommodate the new HVDC transmission line. Portions of six proposed HVDC structures will be visible from this viewpoint (see Buffer Planting Plan as Attachment, submitted in the August 14, 2018 MDEP/LUPC Response). The deciduous shrubs proposed will buffer the view of the existing and proposed clearing.



| TECHNICAL INFORMATION | |
|---|---|
| Typical Cross Section | Photograph / Photosimulation Information |
| Location | 45.251855°, -69.830110° |
| Viewing Direction | Southeast to South |
| Horizontal Angle of View | 75° |
| Date and Time | 11/15/18 at 2:30 pm |
| Camera Focal Length | 35 mm (50 mm equiv.) |
| Camera Make/Model | Nikon D5500 |
| Photo Source | TJD&A |
| Proposed Structures Visible | 6 |
| Approximate Distance to Nearest Visible Structure | 500 ft |
| | |
| | |
| December 7, 2018 PAGE 38 OF 58 | |



Existing Conditions: Normal view looking south on Troutdale Road (private road) toward the existing transmission line crossing of Joes Hole (Moxie Pond).

PHOTOSIMULATION 50A:TROUTDALE ROAD, Bald Mountain Twp



Proposed Conditions: Normal view looking south on Troutdale Road (private road) looking toward the proposed co-located HVDC transmission line. The existing 150 ft wide transmission line clearing will be widened by 75 ft on the western side to accommodate the new HVDC transmission line corridor. Portions of six proposed HVDC structures will be visible from this viewpoint.

PHOTOSIMULATION 50A:TROUTDALE ROAD, Bald Mountain Twp

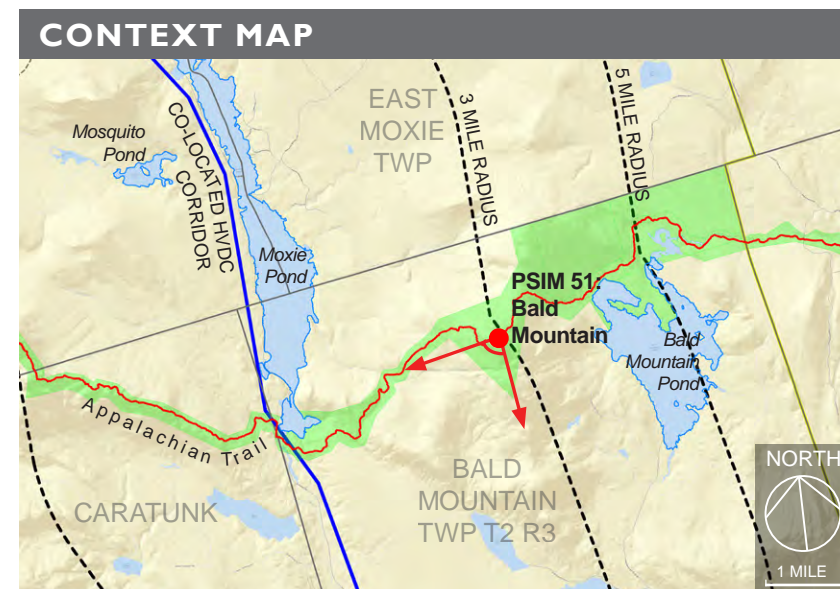
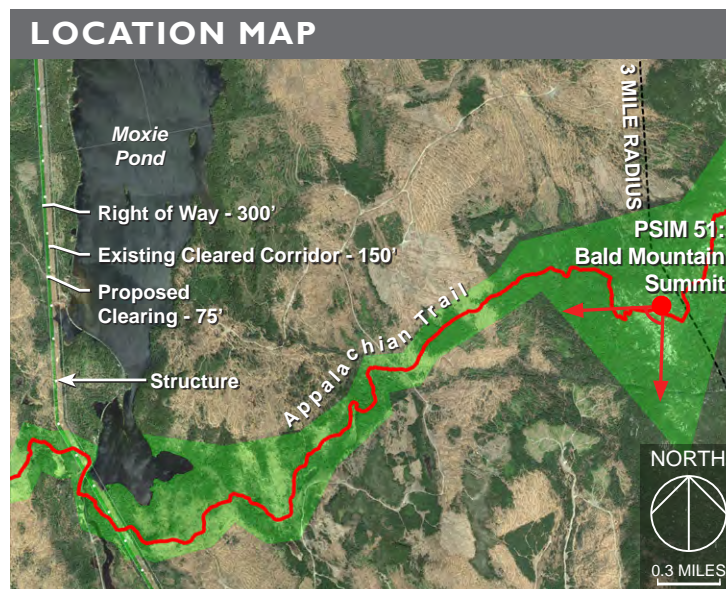


Proposed Conditions: Normal view looking south on Troutdale Road (private road) looking toward the proposed co-located HVDC transmission line with proposed Joes Hole (Moxie Pond) buffer plantings in the foreground. The existing 150 ft wide transmission line clearing will be widened by 75 ft on the western side to accommodate the new HVDC transmission line corridor. Portions of six proposed HVDC structures will be visible from this viewpoint.

PHOTOSIMULATION 51: BALD MOUNTAIN - Southwest, Bald Mountain Twp T2 R3



Proposed conditions: Panoramic view looking from south to west toward the location of proposed co-located HVDC transmission line, from the summit of Bald Mountain on the Appalachian Trail in Bald Mountain Twp T2 R3. Approximately 800 ft of the AT on Bald Mountain will have Project views. Moxie Mountain is visible in the center of the image. Moxie Pond is visible on the right side of the image. A total of eleven structures will be visible within 3 miles from this viewpoint.



TECHNICAL INFORMATION

| Typical Cross Section | | Photograph / Photosimulation Information | |
|-----------------------|--|---|-------------------------|
| | | Location | 45.263362°, -69.773160° |
| | | Viewing Direction | South to West |
| | | Horizontal Angle of View | 89° |
| | | Date and Time | 11/11/18 at 12:08 pm |
| | | Camera Focal Length | 35 mm (50 mm equiv.) |
| | | Camera Make/Model | Nikon D5500 |
| | | Photo Source | TJD&A |
| | | Proposed Structures Visible | 11 within 3 miles |
| | | Approximate Distance to Nearest Visible Structure | 2.8 miles |
| | | | |
| December 7, 2018 | | PAGE 42 OF 58 | |

EXISTING CONDITIONS 51A: BALD MOUNTAIN - Southwest, Bald Mountain Twp T2 R3



Existing Conditions: Normal view looking southwest toward the existing 115 kV transmission line from the summit of Bald Mountain, in Bald Mountain Twp T2 R3. The existing corridor in Bald Mountain Twp T2 R3 is visible in the midground.

PHOTOSIMULATION 51A: BALD MOUNTAIN - Southwest, Bald Mountain Twp T2 R3



Proposed Conditions: Normal view looking southwest toward the existing 115 kV transmission line from the summit of Bald Mountain in Bald Mountain Twp T2 R3. The proposed structures, conductors, and cleared corridor visible in this direction are beyond 3 miles of this viewpoint.

EXISTING CONDITIONS 51B: BALD MOUNTAIN - Southwest, Bald Mountain Twp T2 R3



Existing Conditions: Normal view looking southwest toward the existing 115 kV transmission line from the summit of Bald Mountain, in Bald Mountain Twp T2 R3. Moxie Mountain is visible in on the right side of the image. Baker Pond is visible below Moxie Mountain extending to the right of the image.

PHOTOSIMULATION 51B: BALD MOUNTAIN - Southwest, Bald Mountain Twp T2 R3



Proposed Conditions: Normal view looking southwest toward the proposed HVDC transmission line from the summit of Bald Mountain, in Bald Mountain Twp T2 R3. Four proposed HVDC structures would be visible within 3 miles of this viewpoint.

December 7, 2018

PAGE 46 OF 58

EXISTING CONDITIONS 51C: BALD MOUNTAIN - Southwest, Bald Mountain Twp T2 R3



Existing Conditions: Normal view looking west toward the existing 115 kV transmission line from the summit of Bald Mountain, in Bald Mountain Twp T2 R3. Pleasant Pond Mountain is visible on the right side of the image.

PHOTOSIMULATION 51C: BALD MOUNTAIN - Southwest, Bald Mountain Twp T2 R3



Proposed Conditions: Normal view looking west toward the proposed HVDC transmission line from the summit of Bald Mountain, in Bald Mountain Twp T2 R3. Ten proposed HVDC structures and conductors would be visible within 3 miles of this viewpoint.

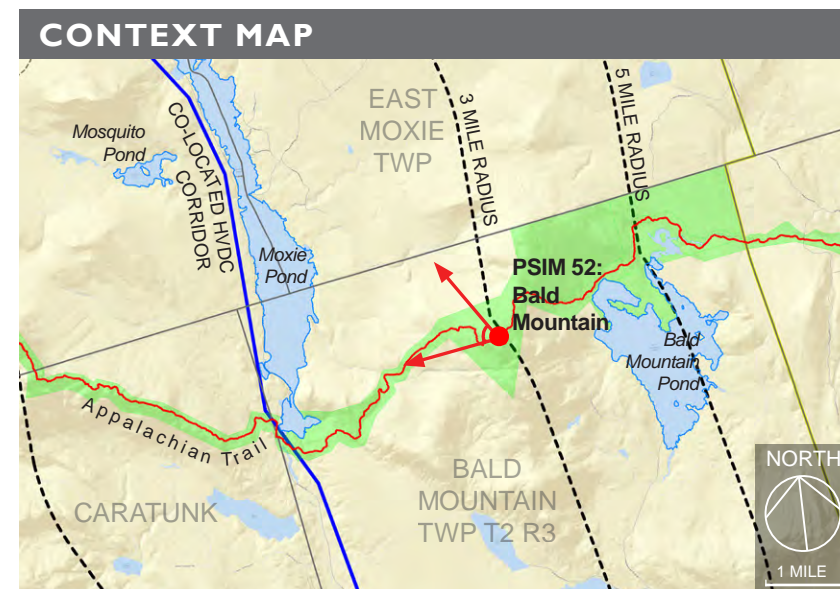
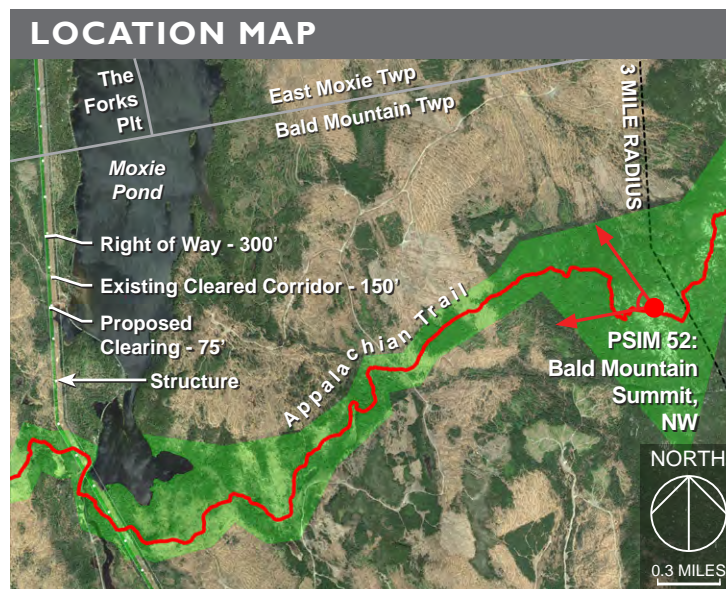
December 7, 2018

PAGE 48 OF 58

PHOTOSIMULATION 52: BALD MOUNTAIN - Northwest, Bald Mountain Twp T2 R3



Proposed Conditions: Continued panoramic view (from Photosimulation 51) looking from west to north toward the location of proposed co-located HVDC transmission line, from the summit of Bald Mountain on the Appalachian Trail in Bald Mountain TWP T2 R3. Approximately 800 ft of the AT on Bald Mountain will have project views. Moxie Mountain is visible in the center of the image. Moxie Pond is visible on the right side of the image. A total of seven proposed HVDC structures would be visible within 3 miles of this viewpoint on the far side of Moxie Pond.



TECHNICAL INFORMATION

| Typical Cross Section | | Photograph / Photosimulation Information | |
|-----------------------|--|---|-------------------------|
| | | Location | 45.263362°, -69.773160° |
| | | Viewing Direction | West to North |
| | | Horizontal Angle of View | 71° |
| | | Date and Time | 11/11/18 at 12:08 pm |
| | | Camera Focal Length | 35 mm (50 mm equiv.) |
| | | Camera Make/Model | Nikon D5500 |
| | | Photo Source | TJD&A |
| | | Proposed Structures Visible | 7 within 3 miles |
| | | Approximate Distance to Nearest Visible Structure | 2.9 miles |
| | | December 7, 2018 PAGE 49 OF 58 | |

EXISTING CONDITIONS 52A: BALD MOUNTAIN - Northwest, Bald Mountain Twp T2 R3



Existing Conditions: Normal view looking west from the summit of Bald Mountain in Bald Mountain Twp T2 R3 toward the existing 115 kV transmission line on the West side of Moxie Pond. Pleasant Pond Mountain is visible in the center of the image.

PHOTOSIMULATION 52A: BALD MOUNTAIN - Northwest, Bald Mountain Twp T2 R3



Proposed Conditions: Normal view looking west toward the proposed HVDC transmission line from the summit of Bald Mountain, in Bald Mountain Twp T2 R3. Seven proposed HVDC structures, conductors, and portions of the cleared corridor would be visible from within 3 miles of this viewpoint.

December 7, 2018

PAGE 51 OF 58

EXISTING CONDITIONS 52B: BALD MOUNTAIN - Northwest, Bald Mountain Twp T2 R3



Existing Conditions: Normal view looking northwest from the summit of Bald Mountain in Bald Mountain Twp T2 R3 toward the existing 115 kV transmission line on the west side of Moxie Pond. Mosquito Mountain is visible on the right side of the image.

PHOTOSIMULATION 52B: BALD MOUNTAIN - Northwest, Bald Mountain Twp T2 R3



Proposed Conditions: Normal view looking northwest from the summit of Bald Mountain in Bald Mountain Twp T2 R3 toward the proposed HVDC transmission line. Two proposed HVDC structures and conductors would be visible from within 3 miles of this viewpoint. The wider corridor will be more visible during leaf-off conditions.

December 7, 2018

PAGE 53 OF 58

EXISTING CONDITIONS 52C: BALD MOUNTAIN - Northwest, Bald Mountain Twp T2 R3



Existing Conditions: Normal view looking northwest from the summit of Bald Mountain in Bald Mountain Twp T2 R3 toward the existing 115 kV transmission line. Mosquito Mountain is visible in the center of the image.

PHOTOSIMULATION 52C: BALD MOUNTAIN - Northwest, Bald Mountain Twp T2 R3



Proposed Conditions: Normal view looking northwest from the summit of Bald Mountain in Bald Mountain Twp T2 R3 toward the proposed HVDC transmission line. The proposed structures and conductors that would be visible are beyond 3 miles of this viewpoint.

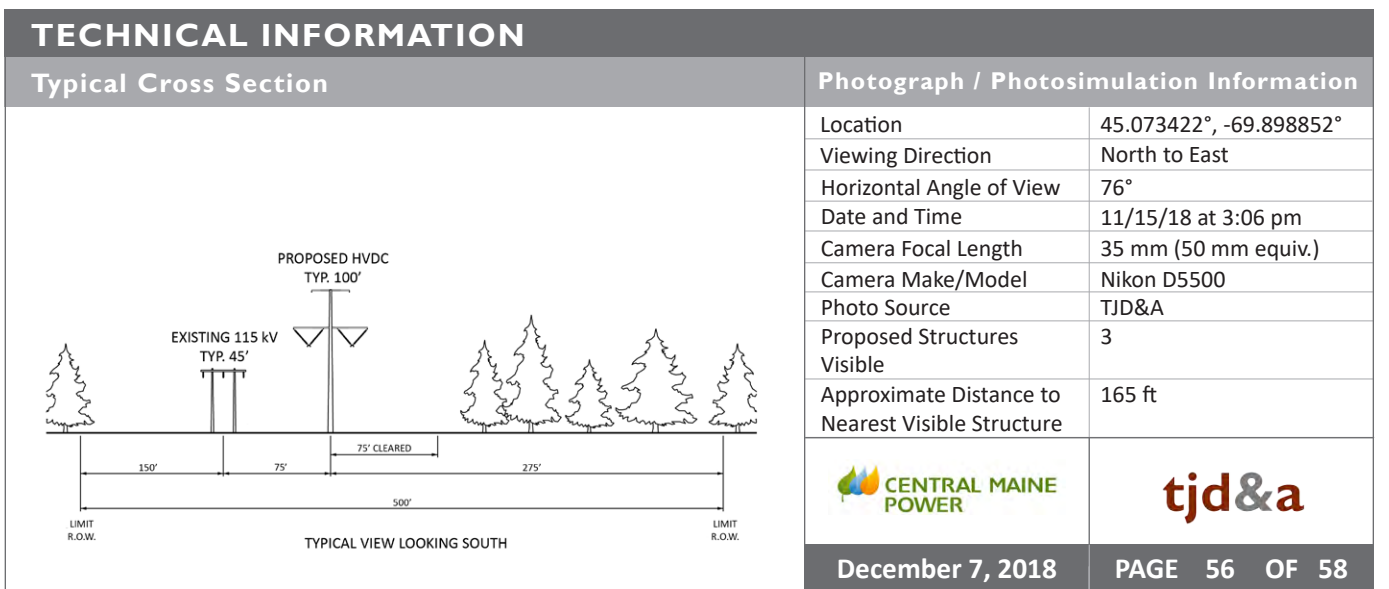
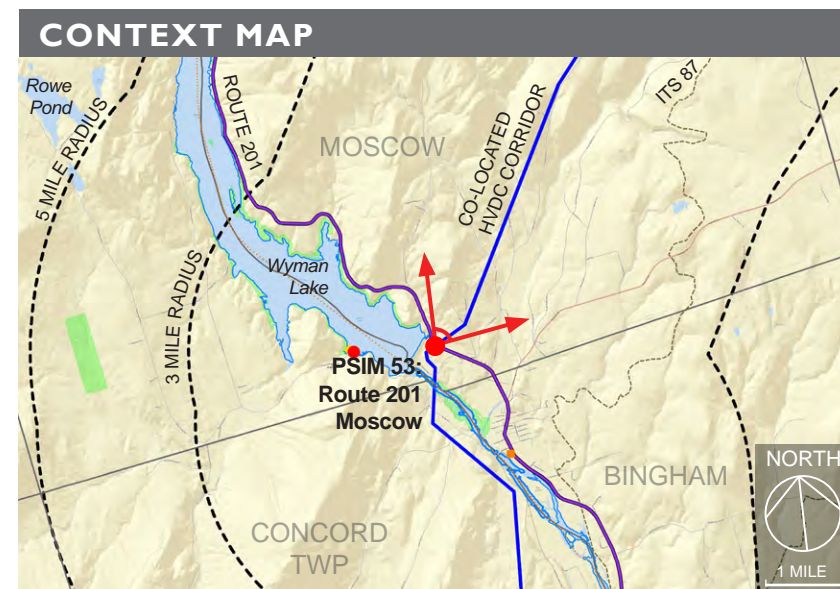
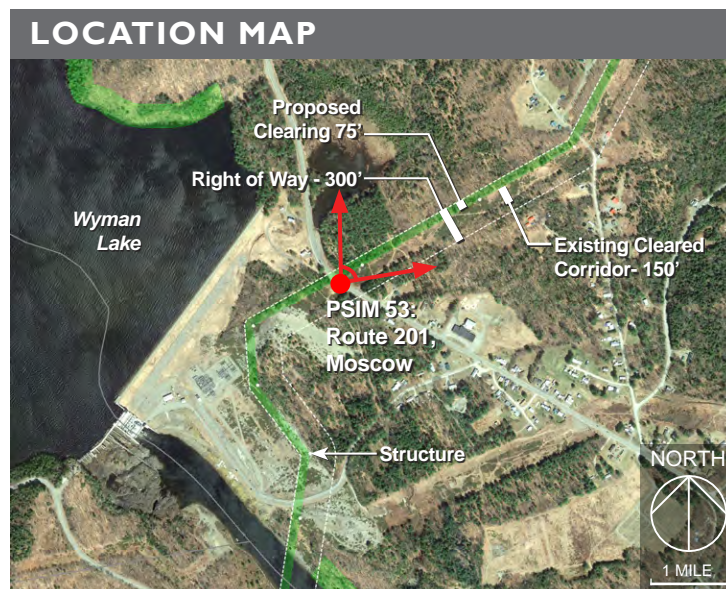
December 7, 2018

PAGE 55 OF 58

PHOTOSIMULATION 53: ROUTE 201, Moscow



Proposed Conditions: Panoramic view looking from north to east from Route 201 in Moscow toward the proposed co-located HVDC transmission line. The existing 225 ft wide corridor clearing will be widened by 75 ft on the western side (left of corridor in image) to accommodate the proposed transmission line. Three structures will be visible from this viewpoint.





Existing Conditions: Normal view looking northeast toward the existing 115 kV transmission line corridor from Route 201 in Moscow.



Proposed Conditions: Normal view looking northeast toward the proposed co-located HVDC transmission line from Route 201 in Moscow. The existing 225 ft wide corridor clearing will be widened by 75 ft on the western side (left of corridor in image) to accommodate the proposed HVDC transmission line. Three structures will be visible from this viewpoint.