



**CENTRAL MAINE
POWER**

August 7, 2018

Mr. John Perry
Environmental Review Coordinator
Maine Department of Inland Fisheries and Wildlife
284 State Street, 41 SHS
Augusta, Maine 04333-0041

**RE: New England Clean Energy Connect Project
Roaring Brook Mayfly – Perennial Stream Habitat Characterization Survey
Northern Bog Lemming – Habitat Characterization Survey**

Dear Mr. Perry:

In response to the Maine Department of Inland Fisheries and Wildlife's (MDIFW) March 15, 2018 review comments for the proposed New England Clean Energy Connect (NECEC) Project, Central Maine Power Company (CMP) is submitting for your review the results of a stream habitat characterization survey conducted by Burns & McDonnell (BMcD) during the week of July 9-13, 2018 and a Northern Bog Lemming habitat survey conducted by TRC in July 2018.

Stream Habitat Characterization Survey

The purpose of the stream habitat characterization survey was to better identify the perennial streams in the project area that have favorable habitat conditions for the presence of Roaring Brook Mayfly with the goal of defining the scope of presence/absence surveys planned for September 2018.

Per the IF&W recommendation for surveys to be conducted, only perennial streams draining off slopes above 1,000 feet elevation MSL in the greenfield section of the NECEC project (between the Quebec/Maine border and Johnson Mountain Twp.) were characterized.

Each stream inspection record included in the attached data set offers stream characteristic and observation data to assist with identifying streams that will require presence/absence surveys for Roaring Brook Mayfly in September. The stream characteristics recorded include substrate data, riparian habitat type, canopy cover, stream gradient, aquatic vegetation and coldwater or warmwater fishery observations. Representative photos were also taken for each of the perennial streams surveyed.

CMP is requesting MDIFW's review of the attached inspection records and assistance with identifying the streams to be surveyed for presence/absence surveys in September 2018.



**CENTRAL MAINE
POWER**

Northern Bog Lemming Habitat Survey

The attached memorandum prepared by TRC concludes that the ~1.5 mile survey area recommended by the MDIFW in its March 15, 2018 review comments, does not contain potential habitat for Northern Bog Lemming.

CMP requests the MDIFW's concurrence with TRC's findings that potential habitat for Northern Bog Lemming does not occur within the required survey area.

If you have any questions regarding the attached stream survey summary report or Northern Bog Lemming memorandum, please contact Mark Goodwin at Burns & McDonnell at (207) 517-8482.

Sincerely,

Gerry J. Mirabile
Manager – Environmental Projects
Environmental Permitting
AVANGRID Networks, Inc.

Enclosures

cc: Robert Stratton, MDIFW; Beth Swartz, MDIFW; James Beyer, MDEP; Jay Clement, USACE; Samantha Horn, LUPC; Bill Hinkel, LUPC; Naomi Kirk-Lawlor, LUPC; Christopher Lawrence, USDOE; Melissa Pauley, USDOE; Bernardo Escudero, CMP; Mark Goodwin, Burns & McDonnell; Matt Manahan, Pierce Atwood; Jared des Rosiers, Pierce Atwood
File: New England Clean Energy Connect

ATTACHMENT
ROARING BROOK MAYFLY – HABITAT CHARACTERIZATION INSPECTION RECORDS

Stream Survey

Stream Inspection Record



Feature Data

FeatureID	OBJECTID	FC-ID	Latitude	Longitude
PSTR-39-02	1	STR-39-2	45.4333044	-70.0595274

Inspector	Inspection Date
jmorin	7/9/2018

Description Data

TYPE	Data Form Description
Perennial Stream/River	Gravel/Cobble/Boulder, 4-8' wide 6" deep, vertical banks (brook trout)

Substrate Data

Substrate Rocks	Substrate Cobbles	Substrate Gravel	Substrate Sand	Substrate Peat Muck	Substrate Boulders
Yes	Yes	Yes			

Observation Data

Riparian Habitat	Canopy Cover	Stream Gradient	Aquatic Vegetation	Water Temperature
Hardwood	Moderate	Low	Sparse	Cold Water

Condition of Riparian Area Streambed	Width	Depth
Undisturbed	4-8	6

Comment Data

Comments

Global ID (Internal QA/QC Field)
{CF5E3B8A-F8C3-4138-A95C-CA6F1E0AB560}

End Record





Stream Inspection Record



Feature Data

FeatureID	OBJECTID	FC-ID	Latitude	Longitude
PSTR-38-06	2	STREAM 38-6	45.4301694	-70.0751343
Inspector			Inspection Date	
jmorin			7/9/2018	

Description Data

TYPE	Data Form Description
Perennial Stream/River	Gravel/Cobble/Boulder, 4' wide 12" deep, vertical and gradual banks

Substrate Data

Substrate Rocks	Substrate Cobbles	Substrate Gravel	Substrate Sand	Substrate Peat Muck	Substrate Boulders
Yes	Yes	Yes			Yes

Observation Data

Riparian Habitat	Canopy Cover	Stream Gradient	Aquatic Vegetation	Water Temperature
Hardwood	Dense	Moderate	Sparse	Cold Water
Condition of Riparian Area Streambed			Width	Depth
Undisturbed			4	12

Comment Data

Comments

Global ID (Internal QA/QC Field)
{A2F6849A-FAB5-414A-A406-097E280338FC}

End Record





Stream Inspection Record



Feature Data

FeatureID	OBJECTID	FC-ID	Latitude	Longitude
PSTR-38-02	3	STREAM 38 -2	45.4298071	-70.0776456
Inspector			Inspection Date	
jmorin			7/9/2018	

Description Data

TYPE	Data Form Description
Perennial Stream/River	Gravel/Cobble/Boulder/Bedrock, 8' wide 12" deep, vertical banks

Substrate Data

Substrate Rocks	Substrate Cobbles	Substrate Gravel	Substrate Sand	Substrate Peat Muck	Substrate Boulders
Yes	Yes				Yes

Observation Data

Riparian Habitat	Canopy Cover	Stream Gradient	Aquatic Vegetation	Water Temperature
Hardwood	Dense	Moderate	Moderate	Cold Water
Condition of Riparian Area Streambed			Width	Depth
			8	12

Comment Data

Comments

Global ID (Internal QA/QC Field)
{C4069A74-A7E1-49EB-B785-2DF60875E2E5}

End Record





Stream Inspection Record



Feature Data

FeatureID	OBJECTID	FC-ID	Latitude	Longitude
PSTR-38-10	5	STREAM 38-10	45.4280931	-70.0852393

Inspector	Inspection Date
jmorin	7/9/2018

Description Data

TYPE	Data Form Description
Perennial Stream/River	Gravel/Cobble/Boulder/Bedrock, 6' wide 12" deep, vertical banks

Substrate Data

Substrate Rocks	Substrate Cobbles	Substrate Gravel	Substrate Sand	Substrate Peat Muck	Substrate Boulders
Yes	Yes	Yes			Yes

Observation Data

Riparian Habitat	Canopy Cover	Stream Gradient	Aquatic Vegetation	Water Temperature
Hardwood	Dense	Moderate	Sparse	Cold Water

Condition of Riparian Area Streambed	Width	Depth
Undisturbed	6	12

Comment Data

Comments

Global ID (Internal QA/QC Field)
{8918B6AA-9D49-4B40-BE57-CF4DAF421FD8}

End Record





Stream Inspection Record



Feature Data

FeatureID	OBJECTID	FC-ID	Latitude	Longitude
PSTR-38-15	6	STREAM 38-15	45.4271370	-70.0897441
Inspector			Inspection Date	
jmorin			7/9/2018	

Description Data

TYPE	Data Form Description
Perennial Stream/River	Gravel/Cobble/Boulder/Bedrock, 6" wide 12" deep, gradual and vertical banks

Substrate Data

Substrate Rocks	Substrate Cobbles	Substrate Gravel	Substrate Sand	Substrate Peat Muck	Substrate Boulders
Yes	Yes				Yes

Observation Data

Riparian Habitat	Canopy Cover	Stream Gradient	Aquatic Vegetation	Water Temperature
Hardwood	Dense	High	Sparse	Cold Water
Condition of Riparian Area Streambed			Width	Depth
Undisturbed			4	10

Comment Data

Comments

Global ID (Internal QA/QC Field)
{0923B694-370F-46E3-94E3-7A65F9451DC7}

End Record





Stream Inspection Record



Feature Data

FeatureID	OBJECTID	FC-ID	Latitude	Longitude
PSTR-42-03	7	P-STR-42-3	45.4431764	-70.0020792
Inspector			Inspection Date	
jmorin			7/9/2018	

Description Data

TYPE	Data Form Description
Perennial Stream/River	Gravel/Cobble, 40' wide 18" deep, vertical banks

Substrate Data

Substrate Rocks	Substrate Cobbles	Substrate Gravel	Substrate Sand	Substrate Peat Muck	Substrate Boulders
No				Yes	Yes

Observation Data

Riparian Habitat	Canopy Cover	Stream Gradient	Aquatic Vegetation	Water Temperature
Softwood	Moderate	Low	Moderate	Warm Water
Condition of Riparian Area Streambed			Width	Depth
Light disturbance			40	18

Comment Data

Comments

Global ID (Internal QA/QC Field)
{BA94DDD8-C732-48C5-B63E-CD10AAE8516E}

End Record





Stream Inspection Record



Feature Data

FeatureID	OBJECTID	FC-ID	Latitude	Longitude
PSTR-35-02	8	STR35-2	45.4495626	-70.1092955

Inspector	Inspection Date
jmorin	7/9/2018

Description Data

TYPE	Data Form Description
Intermittent Stream/River	Data form for Stream 35-2 says intermittent. Stream 35-2 is Perennial

Substrate Data

Substrate Rocks	Substrate Cobbles	Substrate Gravel	Substrate Sand	Substrate Peat Muck	Substrate Boulders
Yes	Yes				

Observation Data

Riparian Habitat	Canopy Cover	Stream Gradient	Aquatic Vegetation	Water Temperature
Mixed forest	Dense	Moderate	Sparse	Cold Water

Condition of Riparian Area Streambed	Width	Depth
Undisturbed	12	18

Comment Data

Comments

Global ID (Internal QA/QC Field)
{75FDDA68-9D70-4534-A3F4-476A14289E07}

End Record





Stream Inspection Record



Feature Data

FeatureID	OBJECTID	FC-ID	Latitude	Longitude
PSTR-40-06	9	P-STR-41-6	45.4363252	-70.0368686
Inspector			Inspection Date	
jmorin			7/9/2018	

Description Data

TYPE	Data Form Description
Perennial Stream/River	

Substrate Data

Substrate Rocks	Substrate Cobbles	Substrate Gravel	Substrate Sand	Substrate Peat Muck	Substrate Boulders
Yes	Yes	Yes			Yes

Observation Data

Riparian Habitat	Canopy Cover	Stream Gradient	Aquatic Vegetation	Water Temperature
Mixed forest	Sparse	Moderate	Sparse	Cold Water
Condition of Riparian Area Streambed			Width	Depth
Light disturbance			25	12

Comment Data

Comments
Snowmobile bridge up stream logging Rd downstream

Global ID (Internal QA/QC Field)
{66705DA3-691F-403D-A982-9E8613083FD1}

End Record





Stream Inspection Record



Feature Data

FeatureID	OBJECTID	FC-ID	Latitude	Longitude
PSTR-40-07	10	P-STR-41-7	45.4384859	-70.0338597

Inspector	Inspection Date
jmorin	7/9/2018

Description Data

TYPE	Data Form Description
Perennial Stream/River	Inside of project limits

Substrate Data

Substrate Rocks	Substrate Cobbles	Substrate Gravel	Substrate Sand	Substrate Peat Muck	Substrate Boulders
Yes	Yes				Yes

Observation Data

Riparian Habitat	Canopy Cover	Stream Gradient	Aquatic Vegetation	Water Temperature
Hardwood	Dense	Moderate	Moderate	Cold Water

Condition of Riparian Area Streambed	Width	Depth
Light disturbance	5	4

Comment Data

Comments

Global ID (Internal QA/QC Field)
{CBF7B6FE-1E40-443F-9AA0-A1B32396C37C}

End Record





Stream Inspection Record



Feature Data

FeatureID	OBJECTID	FC-ID	Latitude	Longitude
PSTR-40-09	11	P-STR-41-9	45.4373976	-70.0359564

Inspector	Inspection Date
jmorin	7/9/2018

Description Data

TYPE	Data Form Description
Perennial Stream/River	

Substrate Data

Substrate Rocks	Substrate Cobbles	Substrate Gravel	Substrate Sand	Substrate Peat Muck	Substrate Boulders
Yes	Yes			Yes	

Observation Data

Riparian Habitat	Canopy Cover	Stream Gradient	Aquatic Vegetation	Water Temperature
Hardwood	Moderate	Moderate	Sparse	Warm Water

Condition of Riparian Area Streambed	Width	Depth
Undisturbed	2	2

Comment Data

Comments

Global ID (Internal QA/QC Field)
{6C046E78-D5B4-4919-AA25-3D995D987F51}

End Record

PSTR-40-09





Stream Inspection Record



Feature Data

FeatureID	OBJECTID	FC-ID	Latitude	Longitude
PSTR-40-08	12	P-STR-41-8	45.4372751	-70.0366037

Inspector	Inspection Date
jmorin	7/9/2018

Description Data

TYPE	Data Form Description
Perennial Stream/River	

Substrate Data

Substrate Rocks	Substrate Cobbles	Substrate Gravel	Substrate Sand	Substrate Peat Muck	Substrate Boulders
Yes				Yes	

Observation Data

Riparian Habitat	Canopy Cover	Stream Gradient	Aquatic Vegetation	Water Temperature
Mixed forest	Dense	Low	Moderate	Warm Water

Condition of Riparian Area Streambed	Width	Depth
Undisturbed	2	2

Comment Data

Comments

Global ID (Internal QA/QC Field)
{0DB7A55D-86F4-4785-99F1-23679A3546B7}

End Record





Stream Inspection Record



Feature Data

FeatureID	OBJECTID	FC-ID	Latitude	Longitude
PSTR-41-04	13	P-STR-41-4	45.4390415	-70.0334631

Inspector	Inspection Date
jmorin	7/9/2018

Description Data

TYPE	Data Form Description
Perennial Stream/River	Inside of project limits

Substrate Data

Substrate Rocks	Substrate Cobbles	Substrate Gravel	Substrate Sand	Substrate Peat Muck	Substrate Boulders
				Yes	Yes

Observation Data

Riparian Habitat	Canopy Cover	Stream Gradient	Aquatic Vegetation	Water Temperature
Scrub-Shrub	Sparse	Moderate	Moderate	Warm Water

Condition of Riparian Area Streambed	Width	Depth
Significantly disturbed	1	5

Comment Data

Comments
Cutover land area

Global ID (Internal QA/QC Field)
{67C9DFF0-AC19-49F9-8768-F83C6A948D6A}

End Record





Stream Inspection Record



Feature Data

FeatureID	OBJECTID	FC-ID	Latitude	Longitude
PSTR-33-01	15	STR33-1	45.4742477	-70.1012350

Inspector	Inspection Date
jmorin	7/12/2018

Description Data

TYPE	Data Form Description
Perennial Stream/River	

Substrate Data

Substrate Rocks	Substrate Cobbles	Substrate Gravel	Substrate Sand	Substrate Peat Muck	Substrate Boulders
Yes	Yes	Yes			Yes

Observation Data

Riparian Habitat	Canopy Cover	Stream Gradient	Aquatic Vegetation	Water Temperature
Mixed forest	Moderate	High	Sparse	Cold Water

Condition of Riparian Area Streambed	Width	Depth
Undisturbed	18	3

Comment Data

Comments
Waterfall. Some moss on rocks. Very cool stream.

Global ID (Internal QA/QC Field)
{C5AE4822-474F-46CD-AC99-034757B2ED04}

End Record









Stream Inspection Record



Feature Data

FeatureID	OBJECTID	FC-ID	Latitude	Longitude
PSTR-25-01	17	P-STR-25-1	45.4940892	-70.2326457

Inspector	Inspection Date
jmorin	7/12/2018

Description Data

TYPE	Data Form Description
Perennial Stream/River	

Substrate Data

Substrate Rocks	Substrate Cobbles	Substrate Gravel	Substrate Sand	Substrate Peat Muck	Substrate Boulders
Yes	Yes	Yes			Yes

Observation Data

Riparian Habitat	Canopy Cover	Stream Gradient	Aquatic Vegetation	Water Temperature
Softwood	Moderate	Low	Sparse	Cold Water

Condition of Riparian Area Streambed	Width	Depth
Undisturbed	30	16

Comment Data

Comments
Photo taken from bridge at main road crossing to the south. Old cutting to the east and west.

Global ID (Internal QA/QC Field)
{01908081-E01C-4B12-8EA5-1C941593F615}

End Record





Stream Inspection Record



Feature Data

FeatureID	OBJECTID	FC-ID	Latitude	Longitude
PSTR-26-01	18	P-STR-26-1	45.4957023	-70.2245867

Inspector	Inspection Date
rwsheridan	7/12/2018

Description Data

TYPE	Data Form Description
Perennial Stream/River	Sand/Gravel/Cobble, 30' wide 2-3" deep, vertical banks

Substrate Data

Substrate Rocks	Substrate Cobbles	Substrate Gravel	Substrate Sand	Substrate Peat Muck	Substrate Boulders
		Yes	Yes		Yes

Observation Data

Riparian Habitat	Canopy Cover	Stream Gradient	Aquatic Vegetation	Water Temperature
Softwood	Moderate	Low	Moderate	Warm Water

Condition of Riparian Area Streambed	Width	Depth
Undisturbed	10	10

Comment Data

Comments

Global ID (Internal QA/QC Field)
{9D13BBD5-ABC5-465C-8922-FA3B5A4C96DD}

End Record





Stream Inspection Record



Feature Data

FeatureID	OBJECTID	FC-ID	Latitude	Longitude
PSTR-26-05	19	P-STR-26-5	45.4982292	-70.2165796

Inspector	Inspection Date
jmorin	7/12/2018

Description Data

TYPE	Data Form Description
Perennial Stream/River	Inside of project limits

Substrate Data

Substrate Rocks	Substrate Cobbles	Substrate Gravel	Substrate Sand	Substrate Peat Muck	Substrate Boulders
		Yes	Yes		

Observation Data

Riparian Habitat	Canopy Cover	Stream Gradient	Aquatic Vegetation	Water Temperature
Softwood	Dense	Low	Moderate	Cold Water

Condition of Riparian Area Streambed	Width	Depth
Undisturbed	3	4

Comment Data

Comments

Global ID (Internal QA/QC Field)
{4B7B768A-0EA5-4DD1-AFD4-AD2D1071DA22}

End Record





Stream Inspection Record



Feature Data

FeatureID	OBJECTID	FC-ID	Latitude	Longitude
PSTR-18-05	20	P-STR-18-5	45.4685862	-70.3669604

Inspector	Inspection Date
jmorin	7/11/2018

Description Data

TYPE	Data Form Description
Perennial Stream/River	Gravel/Cobble, 5'wide 8" deep, undercut banks

Substrate Data

Substrate Rocks	Substrate Cobbles	Substrate Gravel	Substrate Sand	Substrate Peat Muck	Substrate Boulders
Yes	Yes				Yes

Observation Data

Riparian Habitat	Canopy Cover	Stream Gradient	Aquatic Vegetation	Water Temperature
Hardwood	Moderate	Moderate	Sparse	Cold Water

Condition of Riparian Area Streambed	Width	Depth
Light disturbance	5	8

Comment Data

Comments
Adjacent to clear cut

Global ID (Internal QA/QC Field)
{D04ED55A-BDC1-4DDF-BCF2-06602C7A5231}

End Record







Stream Inspection Record



Feature Data

FeatureID	OBJECTID	FC-ID	Latitude	Longitude
PSTR-18-06	21	P-STR-18-6	45.4677185	-70.3712663
Inspector			Inspection Date	
jmorin			7/11/2018	

Description Data

TYPE	Data Form Description
Perennial Stream/River	Sand, 4' wide 6" deep, gradual banks

Substrate Data

Substrate Rocks	Substrate Cobbles	Substrate Gravel	Substrate Sand	Substrate Peat Muck	Substrate Boulders
	Yes	Yes	Yes		

Observation Data

Riparian Habitat	Canopy Cover	Stream Gradient	Aquatic Vegetation	Water Temperature
Mixed forest	Dense	Low	Moderate	Cold Water
Condition of Riparian Area Streambed			Width	Depth
Light disturbance			4	6

Comment Data

Comments
Moss covered rocks

Global ID (Internal QA/QC Field)
{BF3D29D6-1617-40BE-A787-7DED6005C26B}

End Record





Stream Inspection Record



Feature Data

FeatureID	OBJECTID	FC-ID	Latitude	Longitude
PSTR-18-15	22	P-STR-18-15	45.4678116	-70.3778259

Inspector	Inspection Date
rwsheridan	7/11/2018

Description Data

TYPE	Data Form Description
Perennial Stream/River	Gravel/Cobble, 3' wide 5" deep, vertical banks

Substrate Data

Substrate Rocks	Substrate Cobbles	Substrate Gravel	Substrate Sand	Substrate Peat Muck	Substrate Boulders
				Yes	

Observation Data

Riparian Habitat	Canopy Cover	Stream Gradient	Aquatic Vegetation	Water Temperature
Mixed forest	Dense	Low	Moderate	Cold Water

Condition of Riparian Area Streambed	Width	Depth
Undisturbed	3	5

Comment Data

Comments
Lots of Leaf litter and detritus.

Global ID (Internal QA/QC Field)
{79690454-DEB9-4B1E-84F2-B588E16E7E20}

End Record





Stream Inspection Record



Feature Data

FeatureID	OBJECTID	FC-ID	Latitude	Longitude
PSTR-18-14	23	P-STR-18-14	45.4677074	-70.3771656
Inspector			Inspection Date	
jmorin			7/11/2018	

Description Data

TYPE	Data Form Description
Perennial Stream/River	Gravel/Cobble, 8'wide 12" deep, undercut and vertical banks

Substrate Data

Substrate Rocks	Substrate Cobbles	Substrate Gravel	Substrate Sand	Substrate Peat Muck	Substrate Boulders
Yes	Yes	Yes			

Observation Data

Riparian Habitat	Canopy Cover	Stream Gradient	Aquatic Vegetation	Water Temperature
Mixed forest	Dense	Moderate	Moderate	Cold Water
Condition of Riparian Area Streambed			Width	Depth
Undisturbed			8	12

Comment Data

Comments
Moss covered cobble/stone.

Global ID (Internal QA/QC Field)
{68816A93-CBB7-4001-8686-E5DBE810195A}

End Record





Stream Inspection Record



Feature Data

FeatureID	OBJECTID	FC-ID	Latitude	Longitude
PSTR-15-04	24	P-STR-15-4	45.4637924	-70.4273730

Inspector	Inspection Date
rwsheridan	7/11/2018

Description Data

TYPE	Data Form Description
Perennial Stream/River	Gravel/Cobble/Boulder, 3' wide 4" deep, gradual and vertical banks

Substrate Data

Substrate Rocks	Substrate Cobbles	Substrate Gravel	Substrate Sand	Substrate Peat Muck	Substrate Boulders
	Yes	Yes		Yes	

Observation Data

Riparian Habitat	Canopy Cover	Stream Gradient	Aquatic Vegetation	Water Temperature
Hardwood	Dense	Low		

Condition of Riparian Area Streambed	Width	Depth
Undisturbed	4	4

Comment Data

Comments
No flow at time of survey. Small unconnected pools only

Global ID (Internal QA/QC Field)
{72EC9546-4CE0-4E6F-B614-81639769773D}

End Record





Stream Inspection Record



Feature Data

FeatureID	OBJECTID	FC-ID	Latitude	Longitude
PSTR-16-07	25	P-STR-16-7	45.4628024	-70.4143318

Inspector	Inspection Date
rwsheridan	7/11/2018

Description Data

TYPE	Data Form Description
Perennial Stream/River	Inside of project limits

Substrate Data

Substrate Rocks	Substrate Cobbles	Substrate Gravel	Substrate Sand	Substrate Peat Muck	Substrate Boulders
	Yes		Yes		

Observation Data

Riparian Habitat	Canopy Cover	Stream Gradient	Aquatic Vegetation	Water Temperature
Hardwood	Moderate	Low	Sparse	Cold Water

Condition of Riparian Area Streambed	Width	Depth
Undisturbed	10	5

Comment Data

Comments
Silty/cobbly pool exists

Global ID (Internal QA/QC Field)
{117A1360-D651-4FDC-81E5-52675A7B5E9E}

End Record





Stream Inspection Record



Feature Data

FeatureID	OBJECTID	FC-ID	Latitude	Longitude
PSTR-16-01	26	P-STR-16-1	45.4624878	-70.4129941
Inspector			Inspection Date	
jmorin			7/11/2018	

Description Data

TYPE	Data Form Description
Perennial Stream/River	Gravel/Cobble, 25' wide 12" deep, gradual and vertical banks, caddisfly larvae

Substrate Data

Substrate Rocks	Substrate Cobbles	Substrate Gravel	Substrate Sand	Substrate Peat Muck	Substrate Boulders
Yes	Yes	Yes			

Observation Data

Riparian Habitat	Canopy Cover	Stream Gradient	Aquatic Vegetation	Water Temperature
Hardwood	Moderate	Low	Sparse	Cold Water
Condition of Riparian Area Streambed			Width	Depth
Undisturbed			25	6

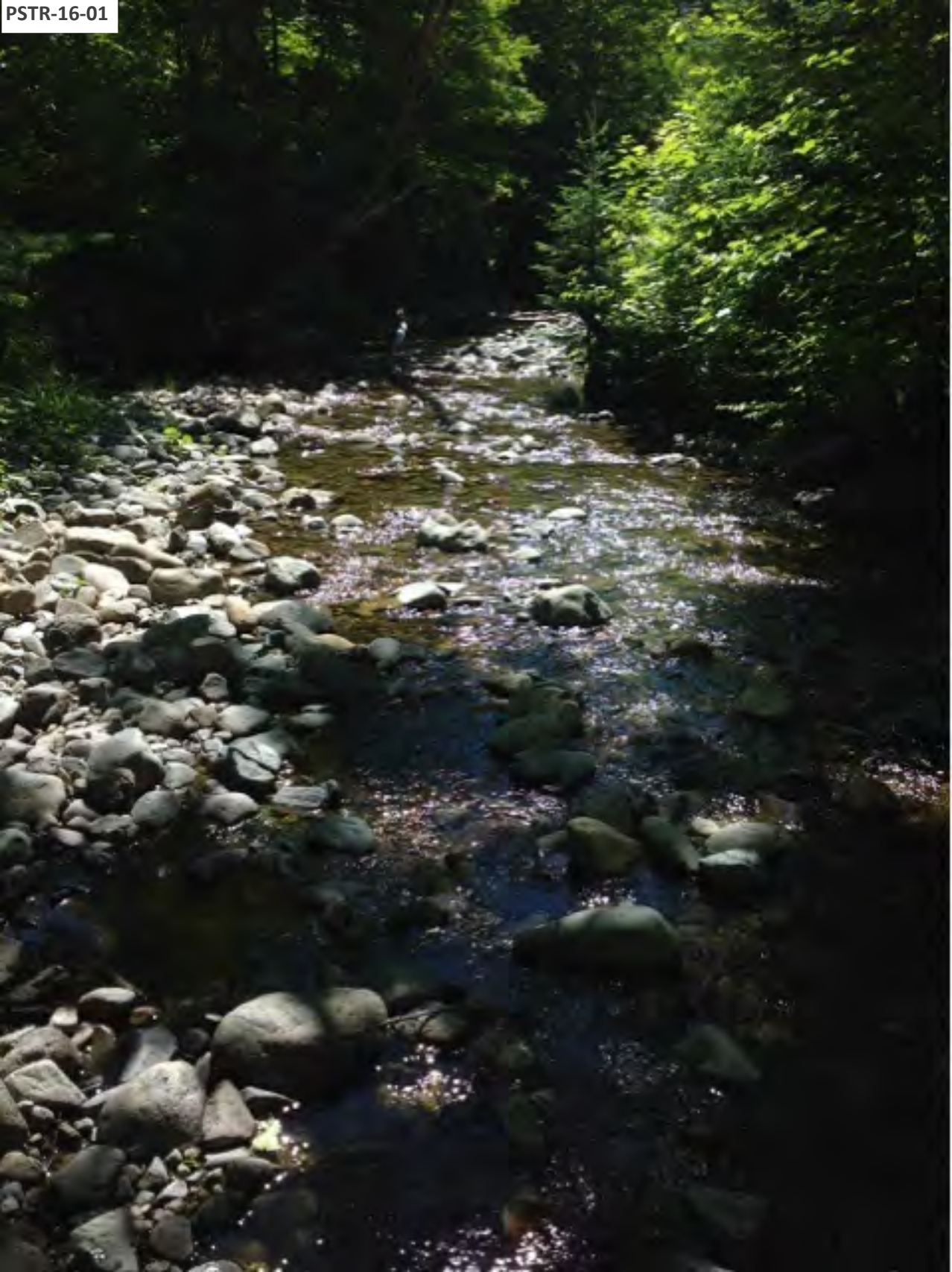
Comment Data

Comments

Global ID (Internal QA/QC Field)
{085BB2F4-F4A6-42BC-890B-85DFC882C837}

End Record





Stream Inspection Record



Feature Data

FeatureID	OBJECTID	FC-ID	Latitude	Longitude
PSTR-31-05	28	STR-31-5	45.5045348	-70.1233567
Inspector			Inspection Date	
jmorin			7/12/2018	

Description Data

TYPE	Data Form Description
Perennial Stream/River	Gravel/Cobble, 15' wide 8" deep, vertical banks (brook trout)

Substrate Data

Substrate Rocks	Substrate Cobbles	Substrate Gravel	Substrate Sand	Substrate Peat Muck	Substrate Boulders
Yes	Yes	Yes	Yes		Yes

Observation Data

Riparian Habitat	Canopy Cover	Stream Gradient	Aquatic Vegetation	Water Temperature
Softwood	Sparse	Low	Sparse	Cold Water
Condition of Riparian Area Streambed			Width	Depth
Undisturbed			15	8

Comment Data

Comments

Global ID (Internal QA/QC Field)
{6517E462-ED5F-4752-A437-5262357A5BBC}

End Record





Stream Inspection Record



Feature Data

FeatureID	OBJECTID	FC-ID	Latitude	Longitude
PSTR-31-06	29	STR-31-6	45.5031979	-70.1211309

Inspector	Inspection Date
jmorin	7/12/2018

Description Data

TYPE	Data Form Description
Perennial Stream/River	Gravel/Cobble, 8' wide 6" deep, vertical banks

Substrate Data

Substrate Rocks	Substrate Cobbles	Substrate Gravel	Substrate Sand	Substrate Peat Muck	Substrate Boulders
	Yes	Yes	Yes	No	

Observation Data

Riparian Habitat	Canopy Cover	Stream Gradient	Aquatic Vegetation	Water Temperature
Softwood	Moderate	Moderate	Sparse	Cold Water

Condition of Riparian Area Streambed	Width	Depth
Undisturbed	8	6

Comment Data

Comments

Global ID (Internal QA/QC Field)
{B2C5BEC5-2251-45AD-A375-65BF2B91BD00}

End Record





Stream Inspection Record



Feature Data

FeatureID	OBJECTID	FC-ID	Latitude	Longitude
PSTR-30-01	30	STR30-1	45.5069845	-70.1412054

Inspector	Inspection Date
jmorin	7/12/2018

Description Data

TYPE	Data Form Description
Perennial Stream/River	Gravel/Cobble/Boulder, 12' wide 12" deep, gradual and vertical banks (brook trout)

Substrate Data

Substrate Rocks	Substrate Cobbles	Substrate Gravel	Substrate Sand	Substrate Peat Muck	Substrate Boulders
Yes	Yes	Yes	Yes		

Observation Data

Riparian Habitat	Canopy Cover	Stream Gradient	Aquatic Vegetation	Water Temperature
Softwood	Moderate	Low	Sparse	Cold Water

Condition of Riparian Area Streambed	Width	Depth
Undisturbed	12	12

Comment Data

Comments

Global ID (Internal QA/QC Field)
{BB69D8BD-45B0-4002-B9BC-B0B24BD86A08}

End Record





Stream Inspection Record



Feature Data

FeatureID	OBJECTID	FC-ID	Latitude	Longitude
PSTR-17-07	31	P-STR-17-7	45.4671634	-70.3954039

Inspector	Inspection Date
rwsheridan	7/11/2018

Description Data

TYPE	Data Form Description
Perennial Stream/River	Gravel/Cobble/Boulder/Bedrock, 20' wide 2' deep, vertical banks

Substrate Data

Substrate Rocks	Substrate Cobbles	Substrate Gravel	Substrate Sand	Substrate Peat Muck	Substrate Boulders
Yes	Yes	Yes	Yes		Yes

Observation Data

Riparian Habitat	Canopy Cover	Stream Gradient	Aquatic Vegetation	Water Temperature
Mixed forest	Moderate		Sparse	Cold Water

Condition of Riparian Area Streambed	Width	Depth
Light disturbance	20	2

Comment Data

Comments
Rock pond road provides access from spencer rd. Small fish present (trout?)

Global ID (Internal QA/QC Field)
{2C5E3F79-2E98-46E3-A12E-FC7B2F41FAEF}

End Record





Stream Inspection Record



Feature Data

FeatureID	OBJECTID	FC-ID	Latitude	Longitude
PSTR-16-14	32	P-STR-16-14	45.4626720	-70.4102221

Inspector	Inspection Date
rwsheridan	7/11/2018

Description Data

TYPE	Data Form Description
Perennial Stream/River	Peat-Muck/Silt-Mud, 3' wide 6" deep, gradual banks

Substrate Data

Substrate Rocks	Substrate Cobbles	Substrate Gravel	Substrate Sand	Substrate Peat Muck	Substrate Boulders
			Yes	Yes	

Observation Data

Riparian Habitat	Canopy Cover	Stream Gradient	Aquatic Vegetation	Water Temperature
Scrub-Shrub	Dense	Low	Sparse	Cold Water

Condition of Riparian Area Streambed	Width	Depth
Light disturbance	4	3

Comment Data

Comments
Comes from culvert under road. Fed by swampy area north of road

Global ID (Internal QA/QC Field)
{D1DCA96D-9F18-40EB-85E0-DAEB409BDDE0}

End Record





Stream Inspection Record



Feature Data

FeatureID	OBJECTID	FC-ID	Latitude	Longitude
PSTR-16-17	34	P-STR-16-17	45.4623351	-70.4121384
Inspector			Inspection Date	
jmorin			7/11/2018	

Description Data

TYPE	Data Form Description
Perennial Stream/River	Looks like a naturalized ditch, Silt/Mud and Gravel/Cobble Substates, 5' wide 3" deep

Substrate Data

Substrate Rocks	Substrate Cobbles	Substrate Gravel	Substrate Sand	Substrate Peat Muck	Substrate Boulders
	Yes	Yes		Yes	

Observation Data

Riparian Habitat	Canopy Cover	Stream Gradient	Aquatic Vegetation	Water Temperature
Hardwood	Dense	Low	Sparse	Warm Water
Condition of Riparian Area Streambed			Width	Depth
Undisturbed			6	6

Comment Data

Comments
Leaf litter. Some moss covered cobble. Within painted ROW.

Global ID (Internal QA/QC Field)
{BDBA4100-D956-4E5A-9439-AF2439CF85EC}

End Record





Stream Inspection Record



Feature Data

FeatureID	OBJECTID	FC-ID	Latitude	Longitude
PSTR-14-24	35	P-STR-14-24	45.4665896	-70.4456428
Inspector			Inspection Date	
rwsheridan			7/11/2018	

Description Data

TYPE	Data Form Description
Perennial Stream/River	Sand/Gravel/Cobble 3' wide 6" deep, gradual banks

Substrate Data

Substrate Rocks	Substrate Cobbles	Substrate Gravel	Substrate Sand	Substrate Peat Muck	Substrate Boulders
	Yes	Yes			

Observation Data

Riparian Habitat	Canopy Cover	Stream Gradient	Aquatic Vegetation	Water Temperature
Hardwood	Dense	Moderate	Sparse	Cold Water
Condition of Riparian Area Streambed			Width	Depth
Undisturbed			5	4

Comment Data

Comments

Global ID (Internal QA/QC Field)
{5A1CD2DF-976E-4D29-A190-0D6DE4E78892}

End Record





Stream Inspection Record



Feature Data

FeatureID	OBJECTID	FC-ID	Latitude	Longitude
PSTR-14-28	36	P-STR-14-28	45.4664537	-70.4464755
Inspector			Inspection Date	
jmorin			7/11/2018	

Description Data

TYPE	Data Form Description
Perennial Stream/River	

Substrate Data

Substrate Rocks	Substrate Cobbles	Substrate Gravel	Substrate Sand	Substrate Peat Muck	Substrate Boulders
				Yes	

Observation Data

Riparian Habitat	Canopy Cover	Stream Gradient	Aquatic Vegetation	Water Temperature
Hardwood	Moderate	Moderate	Dense	
Condition of Riparian Area Streambed			Width	Depth
Undisturbed			2	3

Comment Data

Comments
Low flow. Possible old skid trail.

Global ID (Internal QA/QC Field)
{21A3415E-F818-4094-88AD-CDE8C0D753DC}

End Record

PSTR-14-28





Stream Inspection Record



Feature Data

FeatureID	OBJECTID	FC-ID	Latitude	Longitude
PSTR-14-30	37	P-STR-14-30	45.4665339	-70.4477499

Inspector	Inspection Date
jmorin	7/11/2018

Description Data

TYPE	Data Form Description
Perennial Stream/River	Sand/Gravel/Cobble 3.5' wide 6" deep, gradual banks

Substrate Data

Substrate Rocks	Substrate Cobbles	Substrate Gravel	Substrate Sand	Substrate Peat Muck	Substrate Boulders
	Yes	Yes			

Observation Data

Riparian Habitat	Canopy Cover	Stream Gradient	Aquatic Vegetation	Water Temperature
Hardwood	Dense	Moderate	Sparse	

Condition of Riparian Area Streambed	Width	Depth
Undisturbed	4	4

Comment Data

Comments
Dry at time of inspection. Moss covered cobble.

Global ID (Internal QA/QC Field)
{F2E72512-779E-400D-BA6A-6F0EFB71580C}

End Record





Stream Inspection Record



Feature Data

FeatureID	OBJECTID	FC-ID	Latitude	Longitude
PSTR-14-34	38	P-STR-14-34	45.4664712	-70.4479209
Inspector			Inspection Date	
jmorin			7/11/2018	

Description Data

TYPE	Data Form Description
Perennial Stream/River	Gravel/Cobble 3' wide 4" deep, gradual banks

Substrate Data

Substrate Rocks	Substrate Cobbles	Substrate Gravel	Substrate Sand	Substrate Peat Muck	Substrate Boulders
Yes	Yes	Yes			Yes

Observation Data

Riparian Habitat	Canopy Cover	Stream Gradient	Aquatic Vegetation	Water Temperature
Hardwood	Dense	High	Moderate	Cold Water
Condition of Riparian Area Streambed			Width	Depth
Undisturbed			2	2

Comment Data

Comments
Moss covered cobble

Global ID (Internal QA/QC Field)
{D286BA31-3836-4F18-AB37-E8FE58B9EF7F}

End Record





Stream Inspection Record



Feature Data

FeatureID	OBJECTID	FC-ID	Latitude	Longitude
PSTR-14-36	39	P-STR-14-36	45.4662389	-70.4483049
Inspector			Inspection Date	
rwsheridan			7/11/2018	

Description Data

TYPE	Data Form Description
Perennial Stream/River	Gravel/Cobble 3' wide 4" deep, gradual banks

Substrate Data

Substrate Rocks	Substrate Cobbles	Substrate Gravel	Substrate Sand	Substrate Peat Muck	Substrate Boulders
Yes	Yes				Yes

Observation Data

Riparian Habitat	Canopy Cover	Stream Gradient	Aquatic Vegetation	Water Temperature
Hardwood	Dense	High	Sparse	Cold Water
Condition of Riparian Area Streambed			Width	Depth
Undisturbed			4	4

Comment Data

Comments
Very little flow at the time of survey. Water present in pools

Global ID (Internal QA/QC Field)
{ADDBAB18-7AB0-490C-8692-265D6C241A20}

End Record





Stream Inspection Record



Feature Data

FeatureID	OBJECTID	FC-ID	Latitude	Longitude
PSTR-14-33	40	P-STR-14-33	45.4664978	-70.4482524

Inspector	Inspection Date
rwsheridan	7/11/2018

Description Data

TYPE	Data Form Description
Perennial Stream/River	Gravel/Cobble, 8' wide 8" deep, gradual and vertical banks

Substrate Data

Substrate Rocks	Substrate Cobbles	Substrate Gravel	Substrate Sand	Substrate Peat Muck	Substrate Boulders
Yes	Yes	Yes	Yes		Yes

Observation Data

Riparian Habitat	Canopy Cover	Stream Gradient	Aquatic Vegetation	Water Temperature
Hardwood	Dense	High	Moderate	Cold Water

Condition of Riparian Area Streambed	Width	Depth
Undisturbed	7	6

Comment Data

Comments
Moss covered cobble

Global ID (Internal QA/QC Field)
{735F7F11-2747-4A46-8521-221986A5D4C6}

End Record





Stream Inspection Record



Feature Data

FeatureID	OBJECTID	FC-ID	Latitude	Longitude
PSTR-14-47	41	P-STR-14-47	45.4664411	-70.4496547

Inspector	Inspection Date
jmorin	7/11/2018

Description Data

TYPE	Data Form Description
Perennial Stream/River	Gravel/Cobble 3.5' wide 6" deep, undercut vertical banks

Substrate Data

Substrate Rocks	Substrate Cobbles	Substrate Gravel	Substrate Sand	Substrate Peat Muck	Substrate Boulders
	Yes	Yes			

Observation Data

Riparian Habitat	Canopy Cover	Stream Gradient	Aquatic Vegetation	Water Temperature
Hardwood	Moderate	Moderate	Sparse	Cold Water

Condition of Riparian Area Streambed	Width	Depth
Undisturbed	5	4

Comment Data

Comments

Global ID (Internal QA/QC Field)
{B5447FE1-1314-43E1-8147-0C8AB285D592}

End Record





Stream Inspection Record



Feature Data

FeatureID	OBJECTID	FC-ID	Latitude	Longitude
PSTR-14-49	42	P-STR-14-49	45.4665021	-70.4501036

Inspector	Inspection Date
rwsheridan	7/11/2018

Description Data

TYPE	Data Form Description
Perennial Stream/River	Gravel/Cobble/Boulders, 4' wide 5" deep, vertical banks

Substrate Data

Substrate Rocks	Substrate Cobbles	Substrate Gravel	Substrate Sand	Substrate Peat Muck	Substrate Boulders
Yes	Yes	Yes			Yes

Observation Data

Riparian Habitat	Canopy Cover	Stream Gradient	Aquatic Vegetation	Water Temperature
Hardwood	Dense	Moderate	Sparse	Cold Water

Condition of Riparian Area Streambed	Width	Depth
Undisturbed	6	6

Comment Data

Comments
Photo taken from bridge crossing in ROW

Global ID (Internal QA/QC Field)
{765AA775-B2CD-47D1-AC68-F13197B760B1}

End Record





Stream Inspection Record



Feature Data

FeatureID	OBJECTID	FC-ID	Latitude	Longitude
PSTR-14-68	43	P-STR-14-68	45.4662055	-70.4591268
Inspector			Inspection Date	
jmorin			7/11/2018	

Description Data

TYPE	Data Form Description
Perennial Stream/River	4' wide 6" deep vertical banks (no substrate data on form)

Substrate Data

Substrate Rocks	Substrate Cobbles	Substrate Gravel	Substrate Sand	Substrate Peat Muck	Substrate Boulders
Yes	Yes	Yes			Yes

Observation Data

Riparian Habitat	Canopy Cover	Stream Gradient	Aquatic Vegetation	Water Temperature
Hardwood	Dense	High	Moderate	Cold Water
Condition of Riparian Area Streambed			Width	Depth
Undisturbed			4	6

Comment Data

Comments
Moss covered cobble

Global ID (Internal QA/QC Field)
{E1D518F4-E67D-4330-94A5-809B50569D6C}

End Record





Stream Inspection Record



Feature Data

FeatureID	OBJECTID	FC-ID	Latitude	Longitude
PSTR-23-01	45	str-23-1	45.4904872	-70.2810293

Inspector	Inspection Date
rwsheridan	7/12/2018

Description Data

TYPE	Data Form Description
Perennial Stream/River	

Substrate Data

Substrate Rocks	Substrate Cobbles	Substrate Gravel	Substrate Sand	Substrate Peat Muck	Substrate Boulders
				Yes	

Observation Data

Riparian Habitat	Canopy Cover	Stream Gradient	Aquatic Vegetation	Water Temperature
Softwood	Moderate	Low	Sparse	Warm Water

Condition of Riparian Area Streambed	Width	Depth
Undisturbed	3	12

Comment Data

Comments
Herbaceous understory

Global ID (Internal QA/QC Field)
{A8B97D7E-9B71-471C-B4E6-E6DDD8824E95}

End Record





Stream Inspection Record



Feature Data

FeatureID	OBJECTID	FC-ID	Latitude	Longitude
PSTR-11-01	46	P-STR-11-1	45.4643464	-70.5105174

Inspector	Inspection Date
rwsheridan	7/12/2018

Description Data

TYPE	Data Form Description
Perennial Stream/River	

Substrate Data

Substrate Rocks	Substrate Cobbles	Substrate Gravel	Substrate Sand	Substrate Peat Muck	Substrate Boulders
Yes	Yes	Yes			Yes

Observation Data

Riparian Habitat	Canopy Cover	Stream Gradient	Aquatic Vegetation	Water Temperature
Mixed forest	Dense	High	Sparse	Cold Water

Condition of Riparian Area Streambed	Width	Depth
Light disturbance	15	12

Comment Data

Comments
Photos taken from old bridge. PSTR-EXT-11-01 is part of of this stream.

Global ID (Internal QA/QC Field)
{18581FE1-71FB-472E-8F2D-B19FDFF14A59}

End Record





Stream Inspection Record



Feature Data

FeatureID	OBJECTID	FC-ID	Latitude	Longitude
PSTR-11-07	48	P-STR-11-7	45.4644040	-70.5031432
Inspector			Inspection Date	
rwsheridan			7/10/2018	

Description Data

TYPE	Data Form Description
Perennial Stream/River	Gravel/Cobble, 6' wide, 12" deep, undercut vertical banks

Substrate Data

Substrate Rocks	Substrate Cobbles	Substrate Gravel	Substrate Sand	Substrate Peat Muck	Substrate Boulders
No				Yes	

Observation Data

Riparian Habitat	Canopy Cover	Stream Gradient	Aquatic Vegetation	Water Temperature
Mixed forest	Dense	Low	Moderate	Cold Water
Condition of Riparian Area Streambed			Width	Depth
Undisturbed			6	12

Comment Data

Comments

Global ID (Internal QA/QC Field)
{981042C4-E3C4-4E78-9FDE-ECED633639A7}

End Record





Stream Inspection Record



Feature Data

FeatureID	OBJECTID	FC-ID	Latitude	Longitude
PSTR-21-02	49	STR21-2	45.4774684	-70.3097384

Inspector	Inspection Date
rwsheridan	7/12/2018

Description Data

TYPE	Data Form Description
Perennial Stream/River	Peat/Muck, 5' wide 1' deep, gradual

Substrate Data

Substrate Rocks	Substrate Cobbles	Substrate Gravel	Substrate Sand	Substrate Peat Muck	Substrate Boulders
				Yes	

Observation Data

Riparian Habitat	Canopy Cover	Stream Gradient	Aquatic Vegetation	Water Temperature
Scrub-Shrub	Moderate	Low	Dense	Warm Water

Condition of Riparian Area Streambed	Width	Depth
Undisturbed	5	12

Comment Data

Comments

Global ID (Internal QA/QC Field)
{A1932281-F146-4818-A7C7-D52DFA22E16D}

End Record





Stream Inspection Record



Feature Data

FeatureID	OBJECTID	FC-ID	Latitude	Longitude
PSTR-21-2A	50	STR21-2A	45.4782310	-70.3097214
Inspector			Inspection Date	
jmorin			7/12/2018	

Description Data

TYPE	Data Form Description
Perennial Stream/River	

Substrate Data

Substrate Rocks	Substrate Cobbles	Substrate Gravel	Substrate Sand	Substrate Peat Muck	Substrate Boulders
				Yes	

Observation Data

Riparian Habitat	Canopy Cover	Stream Gradient	Aquatic Vegetation	Water Temperature
Softwood	Moderate	Low	Moderate	
Condition of Riparian Area Streambed			Width	Depth
Undisturbed			5	12

Comment Data

Comments
Very remote. Deep in a swamp.

Global ID (Internal QA/QC Field)
{6ADF9C3C-36C8-45A5-95D2-9B7F89E4E01F}

End Record



PSTR-21-2A



Stream Inspection Record



Feature Data

FeatureID	OBJECTID	FC-ID	Latitude	Longitude
PSTR-12-07	52	P-STR-12-7	45.4648463	-70.4939924
Inspector			Inspection Date	
jmorin			7/11/2018	

Description Data

TYPE	Data Form Description
Perennial Stream/River	Gravel/Cobble/Boulders, 10' wide 8" deep, vertical banks

Substrate Data

Substrate Rocks	Substrate Cobbles	Substrate Gravel	Substrate Sand	Substrate Peat Muck	Substrate Boulders
Yes	Yes	Yes			Yes

Observation Data

Riparian Habitat	Canopy Cover	Stream Gradient	Aquatic Vegetation	Water Temperature
Hardwood	Dense	Moderate	Sparse	Cold Water
Condition of Riparian Area Streambed			Width	Depth
Undisturbed			10	8

Comment Data

Comments
Adjacent to clearcut

Global ID (Internal QA/QC Field)
{1F8B0A7A-7A2A-4BD8-8747-2A81BD6E8BC2}

End Record





Stream Inspection Record



Feature Data

FeatureID	OBJECTID	FC-ID	Latitude	Longitude
PSTR-21-03	53	STR-21-3	45.4758034	-70.3172561

Inspector	Inspection Date
jmorin	7/12/2018

Description Data

TYPE	Data Form Description
Perennial Stream/River	Gravel/Cobble/Boulder, 12' wide 12" deep, gradual banks

Substrate Data

Substrate Rocks	Substrate Cobbles	Substrate Gravel	Substrate Sand	Substrate Peat Muck	Substrate Boulders
Yes	Yes				Yes

Observation Data

Riparian Habitat	Canopy Cover	Stream Gradient	Aquatic Vegetation	Water Temperature
Softwood	Moderate	Low	Moderate	Cold Water

Condition of Riparian Area Streambed	Width	Depth
Undisturbed	12	12

Comment Data

Comments
Very remote. No evidence of recent logging activity.

Global ID (Internal QA/QC Field)
{A87D76E1-3A26-4BC8-9556-02E5DB42DDD4}

End Record





Stream Inspection Record



Feature Data

FeatureID	OBJECTID	FC-ID	Latitude	Longitude
PSTR-21-04	54	str-21-4	45.4758430	-70.3167301

Inspector	Inspection Date
rwsheridan	7/12/2018

Description Data

TYPE	Data Form Description
Perennial Stream/River	Gravel/Cobble/Boulder, 20' wide 18" deep, vertical banks (warm water from upstream bog)

Substrate Data

Substrate Rocks	Substrate Cobbles	Substrate Gravel	Substrate Sand	Substrate Peat Muck	Substrate Boulders
Yes	Yes				Yes

Observation Data

Riparian Habitat	Canopy Cover	Stream Gradient	Aquatic Vegetation	Water Temperature
Softwood	Dense	Moderate	Dense	Cold Water

Condition of Riparian Area Streambed	Width	Depth
Undisturbed	25	18

Comment Data

Comments

Global ID (Internal QA/QC Field)
{8BF099FA-B381-48E5-A59A-7FD33A98DBFA}

End Record





Stream Inspection Record



Feature Data

FeatureID	OBJECTID	FC-ID	Latitude	Longitude
PSTR-24-03	55	SSTR24-03	45.4970752	-70.2610624

Inspector	Inspection Date
jmorin	7/12/2018

Description Data

TYPE	Data Form Description
Perennial Stream/River	

Substrate Data

Substrate Rocks	Substrate Cobbles	Substrate Gravel	Substrate Sand	Substrate Peat Muck	Substrate Boulders
				Yes	Yes

Observation Data

Riparian Habitat	Canopy Cover	Stream Gradient	Aquatic Vegetation	Water Temperature
Softwood	Sparse	Low	Moderate	Warm Water

Condition of Riparian Area Streambed	Width	Depth
Undisturbed	45	36

Comment Data

Comments

Global ID (Internal QA/QC Field)
{A5419586-E33B-43E2-ADF4-08CFE2441739}

End Record





Stream Inspection Record



Feature Data

FeatureID	OBJECTID	FC-ID	Latitude	Longitude
PSTR-23-02	56	PSTR23-02	45.4892695	-70.2811069

Inspector	Inspection Date
jmorin	7/12/2018

Description Data

TYPE	Data Form Description
Perennial Stream/River	

Substrate Data

Substrate Rocks	Substrate Cobbles	Substrate Gravel	Substrate Sand	Substrate Peat Muck	Substrate Boulders
				Yes	

Observation Data

Riparian Habitat	Canopy Cover	Stream Gradient	Aquatic Vegetation	Water Temperature
Softwood	Sparse	Low	Dense	Warm Water

Condition of Riparian Area Streambed	Width	Depth
Undisturbed	60	3

Comment Data

Comments

Global ID (Internal QA/QC Field)
{5CFC9045-3990-476E-B2BF-399EE8D661D9}

End Record





Stream Inspection Record



Feature Data

FeatureID	OBJECTID	FC-ID	Latitude	Longitude
PSTR-20-01	57	str-20-1	45.4737941	-70.3309400

Inspector	Inspection Date
jmorin	7/11/2018

Description Data

TYPE	Data Form Description
Perennial Stream/River	Silt-Mud/Gravel/Cobble/Bedrock, 3' wide 8-12" deep, gradual banks

Substrate Data

Substrate Rocks	Substrate Cobbles	Substrate Gravel	Substrate Sand	Substrate Peat Muck	Substrate Boulders
				Yes	

Observation Data

Riparian Habitat	Canopy Cover	Stream Gradient	Aquatic Vegetation	Water Temperature
Mixed forest	Sparse	Low	Dense	Warm Water

Condition of Riparian Area Streambed	Width	Depth
Undisturbed	3	8

Comment Data

Comments
Followed north ROW boundary field markings east. Field markings were significantly more north than mapped

Global ID (Internal QA/QC Field)
{07E8E62E-9649-4A7D-B08C-D80B048CD7DB}

End Record





Stream Inspection Record



Feature Data

FeatureID	OBJECTID	FC-ID	Latitude	Longitude
PSTR-00-06	58	P-STR-0-6	45.5141835	-70.7157058

Inspector	Inspection Date
jmorin	7/10/2018

Description Data

TYPE	Data Form Description
Perennial Stream/River	Gravel/Cobble, 3' wide 5" deep, vertical banks

Substrate Data

Substrate Rocks	Substrate Cobbles	Substrate Gravel	Substrate Sand	Substrate Peat Muck	Substrate Boulders
Yes	Yes	Yes			

Observation Data

Riparian Habitat	Canopy Cover	Stream Gradient	Aquatic Vegetation	Water Temperature
Hardwood	Dense	High	Sparse	Cold Water

Condition of Riparian Area Streambed	Width	Depth
Undisturbed	3	5

Comment Data

Comments

Global ID (Internal QA/QC Field)
{5A4EBF9F-A9E8-496A-B149-D2BEB71EA38E}

End Record





Stream Inspection Record



Feature Data

FeatureID	OBJECTID	FC-ID	Latitude	Longitude
PSTR-00-10	59	P-STR-0-10	45.5096883	-70.7023821

Inspector	Inspection Date
jmorin	7/10/2018

Description Data

TYPE	Data Form Description
Perennial Stream/River	

Substrate Data

Substrate Rocks	Substrate Cobbles	Substrate Gravel	Substrate Sand	Substrate Peat Muck	Substrate Boulders
Yes	Yes	Yes	Yes		Yes

Observation Data

Riparian Habitat	Canopy Cover	Stream Gradient	Aquatic Vegetation	Water Temperature
Hardwood	Dense	High	Sparse	Cold Water

Condition of Riparian Area Streambed	Width	Depth
Undisturbed	3	3

Comment Data

Comments

Global ID (Internal QA/QC Field)
{BA95E895-E8E6-4575-8E3F-BBC723B0072A}

End Record





Stream Inspection Record



Feature Data

FeatureID	OBJECTID	FC-ID	Latitude	Longitude
PSTR-09-06	60	STR-9-6	45.4630818	-70.5457946

Inspector	Inspection Date
jmorin	7/10/2018

Description Data

TYPE	Data Form Description
Perennial Stream/River	Gravel/Cobble/Boulder, 4-6' wide 10-15" deep, vertical and gradual banks

Substrate Data

Substrate Rocks	Substrate Cobbles	Substrate Gravel	Substrate Sand	Substrate Peat Muck	Substrate Boulders
	Yes	Yes	Yes		Yes

Observation Data

Riparian Habitat	Canopy Cover	Stream Gradient	Aquatic Vegetation	Water Temperature
Hardwood	Dense	Moderate	Moderate	Cold Water

Condition of Riparian Area Streambed	Width	Depth
Undisturbed	4	12

Comment Data

Comments

Global ID (Internal QA/QC Field)
{854C11F0-E8CB-4BEA-8B20-8530E82D8DDE}

End Record





Stream Inspection Record



Feature Data

FeatureID	OBJECTID	FC-ID	Latitude	Longitude
PSTR-01-05	61	P-STR-1-5	45.5061910	-70.6919400
Inspector			Inspection Date	
jmorin			7/10/2018	

Description Data

TYPE	Data Form Description
Perennial Stream/River	

Substrate Data

Substrate Rocks	Substrate Cobbles	Substrate Gravel	Substrate Sand	Substrate Peat Muck	Substrate Boulders
Yes	Yes	Yes	Yes		Yes

Observation Data

Riparian Habitat	Canopy Cover	Stream Gradient	Aquatic Vegetation	Water Temperature
Mixed forest	Moderate	Moderate	Sparse	Cold Water
Condition of Riparian Area Streambed			Width	Depth
Undisturbed			15	12

Comment Data

Comments

Global ID (Internal QA/QC Field)
{689B0614-6C80-493E-9CFA-D674D248C211}

End Record





Stream Inspection Record



Feature Data

FeatureID	OBJECTID	FC-ID	Latitude	Longitude
PSTR-08-04	62	str-8-4	45.4643898	-70.5662044

Inspector	Inspection Date
jmorin	7/10/2018

Description Data

TYPE	Data Form Description
Perennial Stream/River	

Substrate Data

Substrate Rocks	Substrate Cobbles	Substrate Gravel	Substrate Sand	Substrate Peat Muck	Substrate Boulders
Yes	Yes	Yes			

Observation Data

Riparian Habitat	Canopy Cover	Stream Gradient	Aquatic Vegetation	Water Temperature
Mixed forest	Moderate	Low	Sparse	Cold Water

Condition of Riparian Area Streambed	Width	Depth
Light disturbance	6	10

Comment Data

Comments
Clear cut to the southwest, moss covered cobble

Global ID (Internal QA/QC Field)
{7D0C03D3-A687-45ED-A42E-D8646AF20A56}

End Record





Stream Inspection Record



Feature Data

FeatureID	OBJECTID	FC-ID	Latitude	Longitude
PSTR-07-02	63	str-7-2	45.4663523	-70.5874767

Inspector	Inspection Date
jmorin	7/10/2018

Description Data

TYPE	Data Form Description
Perennial Stream/River	Gravel/Cobble/Boulder/Bedrock, 6' wide 10" deep, vertical and gradual banks

Substrate Data

Substrate Rocks	Substrate Cobbles	Substrate Gravel	Substrate Sand	Substrate Peat Muck	Substrate Boulders
Yes	Yes	Yes			

Observation Data

Riparian Habitat	Canopy Cover	Stream Gradient	Aquatic Vegetation	Water Temperature
Mixed forest	Dense	Moderate	Sparse	Cold Water

Condition of Riparian Area Streambed	Width	Depth
Undisturbed	6	5

Comment Data

Comments

Global ID (Internal QA/QC Field)
{B6BA5C60-9DBB-439B-8A4E-350E13DF9724}

End Record





Stream Inspection Record



Feature Data

FeatureID	OBJECTID	FC-ID	Latitude	Longitude
PSTR-01-09	64	P-STR-1-9	45.5036042	-70.6843720
Inspector			Inspection Date	
jmorin			7/10/2018	

Description Data

TYPE	Data Form Description
Perennial Stream/River	

Substrate Data

Substrate Rocks	Substrate Cobbles	Substrate Gravel	Substrate Sand	Substrate Peat Muck	Substrate Boulders
Yes	Yes	Yes			Yes

Observation Data

Riparian Habitat	Canopy Cover	Stream Gradient	Aquatic Vegetation	Water Temperature
Hardwood	Dense	High	Moderate	Cold Water
Condition of Riparian Area Streambed			Width	Depth
Undisturbed			2.5	2

Comment Data

Comments

Global ID (Internal QA/QC Field)
{1B64ABDB-17EE-40EC-BA22-2474BA5936FC}

End Record





Stream Inspection Record



Feature Data

FeatureID	OBJECTID	FC-ID	Latitude	Longitude
PSTR-15-06	65	P-STR-15-6	45.4631130	-70.4249119

Inspector	Inspection Date
jmorin	7/11/2018

Description Data

TYPE	Data Form Description
Perennial Stream/River	Silt-Mud/Gravel/Cobble/Boulder, 25' wided and 12" deep, gradual and vertical banks, caddisfly larvae

Substrate Data

Substrate Rocks	Substrate Cobbles	Substrate Gravel	Substrate Sand	Substrate Peat Muck	Substrate Boulders
Yes	Yes	Yes			Yes

Observation Data

Riparian Habitat	Canopy Cover	Stream Gradient	Aquatic Vegetation	Water Temperature
Mixed forest	Moderate	High	Sparse	Cold Water

Condition of Riparian Area Streambed	Width	Depth
Undisturbed	25	12

Comment Data

Comments

Global ID (Internal QA/QC Field)
{6E4BF4CA-8C64-4180-B492-3CF953B48D48}

End Record





Stream Inspection Record



Feature Data

FeatureID	OBJECTID	FC-ID	Latitude	Longitude
PSTR-05-02	66	STR 5-2	45.4873343	-70.6162930

Inspector	Inspection Date
jmorin	7/10/2018

Description Data

TYPE	Data Form Description
Perennial Stream/River	Gravel/Cobble/Boulder, 6' wide 8" deep, gradual banks (moss covered cobbles)

Substrate Data

Substrate Rocks	Substrate Cobbles	Substrate Gravel	Substrate Sand	Substrate Peat Muck	Substrate Boulders
Yes	Yes	Yes			Yes

Observation Data

Riparian Habitat	Canopy Cover	Stream Gradient	Aquatic Vegetation	Water Temperature
Hardwood	Moderate	Moderate	Moderate	Cold Water

Condition of Riparian Area Streambed	Width	Depth
Undisturbed	4	12

Comment Data

Comments

Global ID (Internal QA/QC Field)
{D8BC0A94-53EA-4B75-A12F-85C951CE41B5}

End Record





Stream Inspection Record



Feature Data

FeatureID	OBJECTID	FC-ID	Latitude	Longitude
PSTR-05-01	67	STR-5-1	45.4873674	-70.6156155

Inspector	Inspection Date
rwsheridan	7/10/2018

Description Data

TYPE	Data Form Description
Perennial Stream/River	Gravel/Cobble/Boulder, 6' wide 12" deep, gradual banks

Substrate Data

Substrate Rocks	Substrate Cobbles	Substrate Gravel	Substrate Sand	Substrate Peat Muck	Substrate Boulders
Yes	No		Yes		Yes

Observation Data

Riparian Habitat	Canopy Cover	Stream Gradient	Aquatic Vegetation	Water Temperature
Hardwood	Dense	High	Moderate	Cold Water

Condition of Riparian Area Streambed	Width	Depth
Undisturbed	6	12

Comment Data

Comments

Global ID (Internal QA/QC Field)
{AC1330A2-9585-4102-AC6B-7691B0715C32}

End Record





Stream Inspection Record



Feature Data

FeatureID	OBJECTID	FC-ID	Latitude	Longitude
PSTR-SRD1-28-01	68	P-STR-EM28-1	45.5050693	-70.1861194
Inspector			Inspection Date	
rwsheridan			7/12/2018	

Description Data

TYPE	Data Form Description
Perennial Stream/River	

Substrate Data

Substrate Rocks	Substrate Cobbles	Substrate Gravel	Substrate Sand	Substrate Peat Muck	Substrate Boulders
	Yes	Yes	Yes		

Observation Data

Riparian Habitat	Canopy Cover	Stream Gradient	Aquatic Vegetation	Water Temperature
Softwood	Moderate	Low	Sparse	Cold Water
Condition of Riparian Area Streambed			Width	Depth
Undisturbed			10	5

Comment Data

Comments

Global ID (Internal QA/QC Field)
{D4D8DE6A-8BC1-4DD3-9E5E-89EA5352F8F5}

End Record





Stream Inspection Record



Feature Data

FeatureID	OBJECTID	FC-ID	Latitude	Longitude
PSTR-SRD1-28-04	70	P-STR-EM28-4	45.5048239	-70.1861189
Inspector			Inspection Date	
jmorin			7/12/2018	

Description Data

TYPE	Data Form Description
Perennial Stream/River	

Substrate Data

Substrate Rocks	Substrate Cobbles	Substrate Gravel	Substrate Sand	Substrate Peat Muck	Substrate Boulders
Yes	Yes	Yes	Yes		Yes

Observation Data

Riparian Habitat	Canopy Cover	Stream Gradient	Aquatic Vegetation	Water Temperature
Softwood	Moderate	Low	Sparse	Cold Water
Condition of Riparian Area Streambed			Width	Depth
Undisturbed			8	4

Comment Data

Comments

Global ID (Internal QA/QC Field)
{2376901F-4948-46F5-807F-BFBEB437458D}

End Record





Stream Inspection Record



Feature Data

FeatureID	OBJECTID	FC-ID	Latitude	Longitude
PSTR-31-SRD2-01	73	P-STR-31-SRD2-1	45.5040427	-70.1254230

Inspector	Inspection Date
rwsheridan	7/12/2018

Description Data

TYPE	Data Form Description
Perennial Stream/River	

Substrate Data

Substrate Rocks	Substrate Cobbles	Substrate Gravel	Substrate Sand	Substrate Peat Muck	Substrate Boulders
Yes	Yes	Yes	No		

Observation Data

Riparian Habitat	Canopy Cover	Stream Gradient	Aquatic Vegetation	Water Temperature
Softwood	Moderate	Moderate	Sparse	Cold Water

Condition of Riparian Area Streambed	Width	Depth
Undisturbed	0	18

Comment Data

Comments
Road to the north

Global ID (Internal QA/QC Field)
{E01A35A9-F90A-4756-96BE-91155884D5E7}

End Record

Stream Inspection Record



Feature Data

FeatureID	OBJECTID	FC-ID	Latitude	Longitude
PSTR-17R-03	75	str-17r-3	45.4669744	-70.3946932

Inspector	Inspection Date
jmorin	7/11/2018

Description Data

TYPE	Data Form Description
Perennial Stream/River	

Substrate Data

Substrate Rocks	Substrate Cobbles	Substrate Gravel	Substrate Sand	Substrate Peat Muck	Substrate Boulders
Yes	Yes	Yes			

Observation Data

Riparian Habitat	Canopy Cover	Stream Gradient	Aquatic Vegetation	Water Temperature
Mixed forest	Moderate	Moderate	Moderate	Cold Water

Condition of Riparian Area Streambed	Width	Depth
Undisturbed	12	6

Comment Data

Comments
Moss covered rocks. Rock Pond Road crosses stream.

Global ID (Internal QA/QC Field)
{D1F3F2E0-7228-48BD-844A-4571A875A453}

End Record





Stream Inspection Record



Feature Data

FeatureID	OBJECTID	FC-ID	Latitude	Longitude
PSTR-17R-04	76	str-17r-4	45.4669623	-70.3958758

Inspector	Inspection Date
rwsheridan	7/11/2018

Description Data

TYPE	Data Form Description
Perennial Stream/River	

Substrate Data

Substrate Rocks	Substrate Cobbles	Substrate Gravel	Substrate Sand	Substrate Peat Muck	Substrate Boulders
	Yes	Yes			

Observation Data

Riparian Habitat	Canopy Cover	Stream Gradient	Aquatic Vegetation	Water Temperature
Mixed forest	Moderate	Moderate	Sparse	Cold Water

Condition of Riparian Area Streambed	Width	Depth
Light disturbance	15	72

Comment Data

Comments
Adult mayfly present

Global ID (Internal QA/QC Field)
{B9138BC5-BB10-4C5A-9F16-71B9FE7E8435}

End Record

Stream Inspection Record



Feature Data

FeatureID	OBJECTID	FC-ID	Latitude	Longitude
PSTR-EM-34-01	77	P-STR-EM-34-1	45.4736613	-70.1025823

Inspector	Inspection Date
rwsheridan	7/12/2018

Description Data

TYPE	Data Form Description
Perennial Stream/River	Gravel/Cobble, 9' wide 5" deep, vertical banks

Substrate Data

Substrate Rocks	Substrate Cobbles	Substrate Gravel	Substrate Sand	Substrate Peat Muck	Substrate Boulders
Yes	Yes	Yes			Yes

Observation Data

Riparian Habitat	Canopy Cover	Stream Gradient	Aquatic Vegetation	Water Temperature
Mixed forest	Moderate	Moderate	Sparse	Cold Water

Condition of Riparian Area Streambed	Width	Depth
Undisturbed	9	5

Comment Data

Comments
Leads to waterfall in ROW

Global ID (Internal QA/QC Field)
{3ECD6F6A-87A6-422A-A952-D58C9C94EF3E}

End Record





Stream Inspection Record



Feature Data

FeatureID	OBJECTID	FC-ID	Latitude	Longitude
PSTR-EM-34-02	78	P-STR-EM-34-2	45.4728999	-70.1033596
Inspector			Inspection Date	
jmorin			7/12/2018	

Description Data

TYPE	Data Form Description
Perennial Stream/River	Gravel/Cobble, 6'wide 4" deep, gradual banks

Substrate Data

Substrate Rocks	Substrate Cobbles	Substrate Gravel	Substrate Sand	Substrate Peat Muck	Substrate Boulders
	Yes	Yes			Yes

Observation Data

Riparian Habitat	Canopy Cover	Stream Gradient	Aquatic Vegetation	Water Temperature
Mixed forest	Moderate	High	Sparse	Cold Water
Condition of Riparian Area Streambed			Width	Depth
Undisturbed			6	6

Comment Data

Comments
Moss covered cobble.

Global ID (Internal QA/QC Field)
{D33FE763-8B8F-4C72-A8C4-C9A95B5E756F}

End Record







Stream Inspection Record



Feature Data

FeatureID	OBJECTID	FC-ID	Latitude	Longitude
PSTR-SR-29-05	79	P-STR-SR-29-5	45.5127555	-70.1586404

Inspector	Inspection Date
jmorin	7/12/2018

Description Data

TYPE	Data Form Description
Perennial Stream/River	Gravel/Cobble, 4' wide 4" deep, vertical banks

Substrate Data

Substrate Rocks	Substrate Cobbles	Substrate Gravel	Substrate Sand	Substrate Peat Muck	Substrate Boulders
Yes	Yes	Yes			Yes

Observation Data

Riparian Habitat	Canopy Cover	Stream Gradient	Aquatic Vegetation	Water Temperature
Hardwood	Dense	Moderate	Sparse	Cold Water

Condition of Riparian Area Streambed	Width	Depth
Undisturbed	4	4

Comment Data

Comments
Some moss covered rocks. Clear cut over 100' away. PSTR-SRD1-02 appears to be part of this stream.

Global ID (Internal QA/QC Field)
{A599B467-2751-48EE-8D6A-ABF90E716FB4}

End Record





Stream Inspection Record



Feature Data

FeatureID	OBJECTID	FC-ID	Latitude	Longitude
PSTR-11-08-RR1	80	P-STR-11-08-RR1	45.4635560	-70.5002672

Inspector	Inspection Date
jmorin	7/10/2018

Description Data

TYPE	Data Form Description
Perennial Stream/River	

Substrate Data

Substrate Rocks	Substrate Cobbles	Substrate Gravel	Substrate Sand	Substrate Peat Muck	Substrate Boulders
Yes	Yes			Yes	

Observation Data

Riparian Habitat	Canopy Cover	Stream Gradient	Aquatic Vegetation	Water Temperature
Mixed forest	Moderate	Low	Moderate	Cold Water

Condition of Riparian Area Streambed	Width	Depth
Undisturbed	4	4

Comment Data

Comments

Global ID (Internal QA/QC Field)
{9080EB47-B345-44ED-86A4-992867FFB83E}

End Record





Stream Inspection Record



Feature Data

FeatureID	OBJECTID	FC-ID	Latitude	Longitude
PSTR-11-07-RR1	81	P-STR-11-07-RR1	45.4634784	-70.5008345

Inspector	Inspection Date
jmorin	7/10/2018

Description Data

TYPE	Data Form Description
Perennial Stream/River	

Substrate Data

Substrate Rocks	Substrate Cobbles	Substrate Gravel	Substrate Sand	Substrate Peat Muck	Substrate Boulders
Yes	Yes	Yes	Yes	No	

Observation Data

Riparian Habitat	Canopy Cover	Stream Gradient	Aquatic Vegetation	Water Temperature
Mixed forest	Dense	Moderate	Moderate	Cold Water

Condition of Riparian Area Streambed	Width	Depth
Undisturbed	6	6

Comment Data

Comments

Global ID (Internal QA/QC Field)
{9929C404-BCC2-4038-A39A-4278F83B6366}

End Record





Stream Inspection Record



Feature Data

FeatureID	OBJECTID	FC-ID	Latitude	Longitude
PSTR-RR1-3	82	P-STR-RR1-3	45.4631159	-70.5015997
Inspector			Inspection Date	
jmorin			7/10/2018	

Description Data

TYPE	Data Form Description
Perennial Stream/River	

Substrate Data

Substrate Rocks	Substrate Cobbles	Substrate Gravel	Substrate Sand	Substrate Peat Muck	Substrate Boulders
Yes	Yes	Yes			Yes

Observation Data

Riparian Habitat	Canopy Cover	Stream Gradient	Aquatic Vegetation	Water Temperature
Hardwood	Sparse	High	Sparse	Cold Water
Condition of Riparian Area Streambed			Width	Depth
Significantly disturbed			4	6

Comment Data

Comments

Global ID (Internal QA/QC Field)
{BC2907C1-B709-46F1-AF50-57903C8D5FFD}

End Record





Stream Inspection Record



Feature Data

FeatureID	OBJECTID	FC-ID	Latitude	Longitude
PSTR-16-101	83	P-STR-16-101	45.4633981	-70.4110601

Inspector	Inspection Date
jmorin	7/11/2018

Description Data

TYPE	Data Form Description
Perennial Stream/River	

Substrate Data

Substrate Rocks	Substrate Cobbles	Substrate Gravel	Substrate Sand	Substrate Peat Muck	Substrate Boulders
			Yes	Yes	

Observation Data

Riparian Habitat	Canopy Cover	Stream Gradient	Aquatic Vegetation	Water Temperature
Scrub-Shrub	Sparse	Low	Moderate	Cold Water

Condition of Riparian Area Streambed	Width	Depth
Undisturbed	3	10

Comment Data

Comments

Global ID (Internal QA/QC Field)
{A123F8AB-B5FF-4109-8862-B6F474A49BD6}

End Record





Stream Inspection Record



Feature Data

FeatureID	OBJECTID	FC-ID	Latitude	Longitude
PSTR-LT-1	84	P-STR-LT-1	45.4967175	-70.6386411

Inspector	Inspection Date
jmorin	7/10/2018

Description Data

TYPE	Data Form Description
Perennial Stream/River	Gravel/Cobble, 6' wide 1'deep, gradual undercut banks

Substrate Data

Substrate Rocks	Substrate Cobbles	Substrate Gravel	Substrate Sand	Substrate Peat Muck	Substrate Boulders
Yes	Yes	Yes	Yes		Yes

Observation Data

Riparian Habitat	Canopy Cover	Stream Gradient	Aquatic Vegetation	Water Temperature
Hardwood	Dense	Moderate	Moderate	Cold Water

Condition of Riparian Area Streambed	Width	Depth
Undisturbed	6	12

Comment Data

Comments

Global ID (Internal QA/QC Field)
{49C8DFDC-C4E1-441C-8025-F416418A87FC}

End Record





Stream Inspection Record



Feature Data

FeatureID	OBJECTID	FC-ID	Latitude	Longitude
PSTR-SR-31-01	86	1-SRD2-1; P-STR-SR-31-1 1 thr	45.5043793	-70.1251727

Inspector	Inspection Date
rwsheridan	7/12/2018

Description Data

TYPE	Data Form Description
Perennial Stream/River	

Substrate Data

Substrate Rocks	Substrate Cobbles	Substrate Gravel	Substrate Sand	Substrate Peat Muck	Substrate Boulders
Yes	Yes	Yes	Yes		

Observation Data

Riparian Habitat	Canopy Cover	Stream Gradient	Aquatic Vegetation	Water Temperature
Softwood	Moderate	Moderate	Sparse	Cold Water

Condition of Riparian Area Streambed	Width	Depth
Undisturbed	10	18

Comment Data

Comments
Road to the north

Global ID (Internal QA/QC Field)
{424BDD31-08F0-4EFB-BC70-E5BB9D1E8270}

End Record





Stream Inspection Record



Feature Data

FeatureID	OBJECTID	FC-ID	Latitude	Longitude
PSTR-13	103	ST1 PSTR-13	45°29'45.15"	-70°39'03.20"
Inspector			Inspection Date	
rwsheridan			7/10/2018	

Description Data

TYPE	Data Form Description
Perennial stream	

Substrate Data

Substrate Rocks	Substrate Cobbles	Substrate Gravel	Substrate Sand	Substrate Peat Muck	Substrate Boulders
Yes	Yes	Yes	Yes		Yes

Observation Data

Riparian Habitat	Canopy Cover	Stream Gradient	Aquatic Vegetation	Water Temperature
Mixed forest	Moderate	Moderate	Sparse	Cold Water
Condition of Riparian Area Streambed			Width	Depth
Light disturbance			35	2

Comment Data

Comments
ST1 PSTR 13

Global ID (Internal QA/QC Field)
{DBC3C99D-B11F-4481-9955-42B27E753D68}

End Record





Stream Inspection Record



Feature Data

FeatureID	OBJECTID	FC-ID	Latitude	Longitude
PSTR-09-11	104	PSTR-09-11	45°27'45.86"	-70°33'20.74"
Inspector			Inspection Date	
rwsheridan			7/10/2018	

Description Data

TYPE	Data Form Description
Perennial stream	

Substrate Data

Substrate Rocks	Substrate Cobbles	Substrate Gravel	Substrate Sand	Substrate Peat Muck	Substrate Boulders
Yes	Yes				Yes

Observation Data

Riparian Habitat	Canopy Cover	Stream Gradient	Aquatic Vegetation	Water Temperature
Hardwood	Sparse	Low	Sparse	Cold Water
Condition of Riparian Area Streambed			Width	Depth
Undisturbed			35	2.5

Comment Data

Comments
Possible PSTR-09-11

Global ID (Internal QA/QC Field)
{0E72E9C8-459D-434B-8FE0-58E5F305E72C}

End of Report

End Record





ATTACHMENT
NORTHERN BOG LEMMING – HABITAT SURVEY MEMORANDUM

TRC
14 Gabriel Drive
Augusta, ME 04330

Main 207.620.3800
Fax 207.621.8226

Memorandum

To: Gerry Mirabile
AVANGRID Networks/ Central Maine Power Company

From: Dana Valteau
TRC

Subject: Northern Bog Lemming Habitat Surveys NECEC Survey Corridor, Skinner
TWP, Maine

Date: July 31, 2018

CC: Duane Choquette, TRC, Sarah Watts, Tetra Tech

Project No.: 307985

This memorandum provides documentation of survey for potential northern bog lemming (NBL) habitat found along the proposed NECEC Project survey corridor. NBL are a State Threatened Species. Through consultation with MNAP and MDIFW, one section of NECEC Project survey corridor was identified as having the potential to provide suitable habitat for NBL (“NECEC Northern Bog Lemming Survey Area” or “Survey Area”). See Attachment 1 for a map of the survey area.

Suitable habitats for NBLs are alpine sedge meadows, krummholz, spruce-fir forest with dense herbaceous and mossy understories, wet meadows, and mossy stream-sides, that are > 1,000 feet MSL (above Mean Sea Level) in western mountain and northern areas of Maine. Western mountain habitat with documented NBL is comprised of black spruce (*Picea mariana*), balsam fir (*Abies balsamea*), alder (*Alnus* sp.), cinnamon fern (*Osmunda cinnamomea*), sedges (*Carex trisperma*, etc.), and sphagnum moss (*Sphagnum* sp.). The forested areas have a canopy that is at least partially open which promotes thick growth of sedges and other low herbaceous vegetation. MDIFW recommends as part of other project survey work that the applicant note any potential habitats that meet these criteria, and that they perform surveys to document presence/probable absence. Probable presence of NBL can be determined by walking transects in suitable habitat and documenting the presence of run-ways, latrines, and green scat.

Wetland delineations were performed during August 2015 within the Survey Area, and rare plant surveys were performed in July 2018. These field efforts did not identify any suitable NBL habitat. Upland habitats within the Survey Area consisted of hardwood and mixed growth with forb and


deciduous shrub layer or spruce-fir stands with little understory growth. Much of the area has experienced recent logging. Wetland habitats within the Survey Area were mostly within areas that had been logged. Seven of the wetlands within the Survey Area were characterized as palustrine emergent (PEM) wetlands and were open with a tall, dense growth of grasses and forbs. One of the wetlands within the Survey Area was characterized as palustrine emergent/palustrine scrub-shrub (PEM/PSS). Both of these wetland types were associated with openings created by logging. Four wetlands in the Survey Area were characterized as palustrine forested wetlands with softwood and some hardwood tree cover. These wetlands did not have dense sedge or other herbaceous plant growth that provided suitable cover or forage for NBL. Photographs of the habitat found within the Survey Area are provided in Attachment 2.

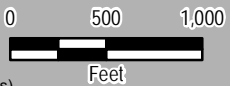
Attachment 1
Northern Bog Lemming Survey Area



Legend

- Northern Bog Lemming Survey Area
- Delineated Wetlands **Wetland ID**






Sources: ESRI, USGS, ME OGIS, CMP, TRC, Boyle (wetlands)

NECEC

Northern Bog Lemming
Survey Area

Created: 7/31/2018  14 Gabriel Drive
Augusta, ME 04330

S:\PROJECTS\NECEC RTE_Survey\NECEC_Northern Bog Lemming_Survey Area_8x11.mxd

Attachment 2
NBL Habitat Survey Photolog



Hardwood Upland



Hardwood Upland



Logged Upland



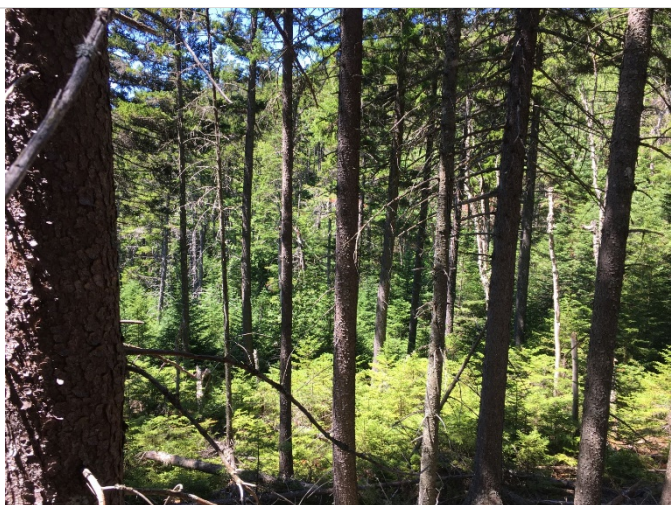
Logged Upland



Mixed Upland



Mixed Upland



Spruce-Fir Upland



Spruce-Fir Upland



Wetland 07-01, PFO 1/4



Wetland 07-02, PFO 1/4



Wetland 07-03, PEM



Wetland 07-04, PEM



Wetland 07-05, PEM



Wetland 07-06, PEM



Wetland 07-08, PEM



Wetland 07-09, PEM



Wetland 07-10, PEM



Wetland 07-13, PFO 1/4



Wetland 07-14, PFO 4



Wetland 07-15, PFO 1/4