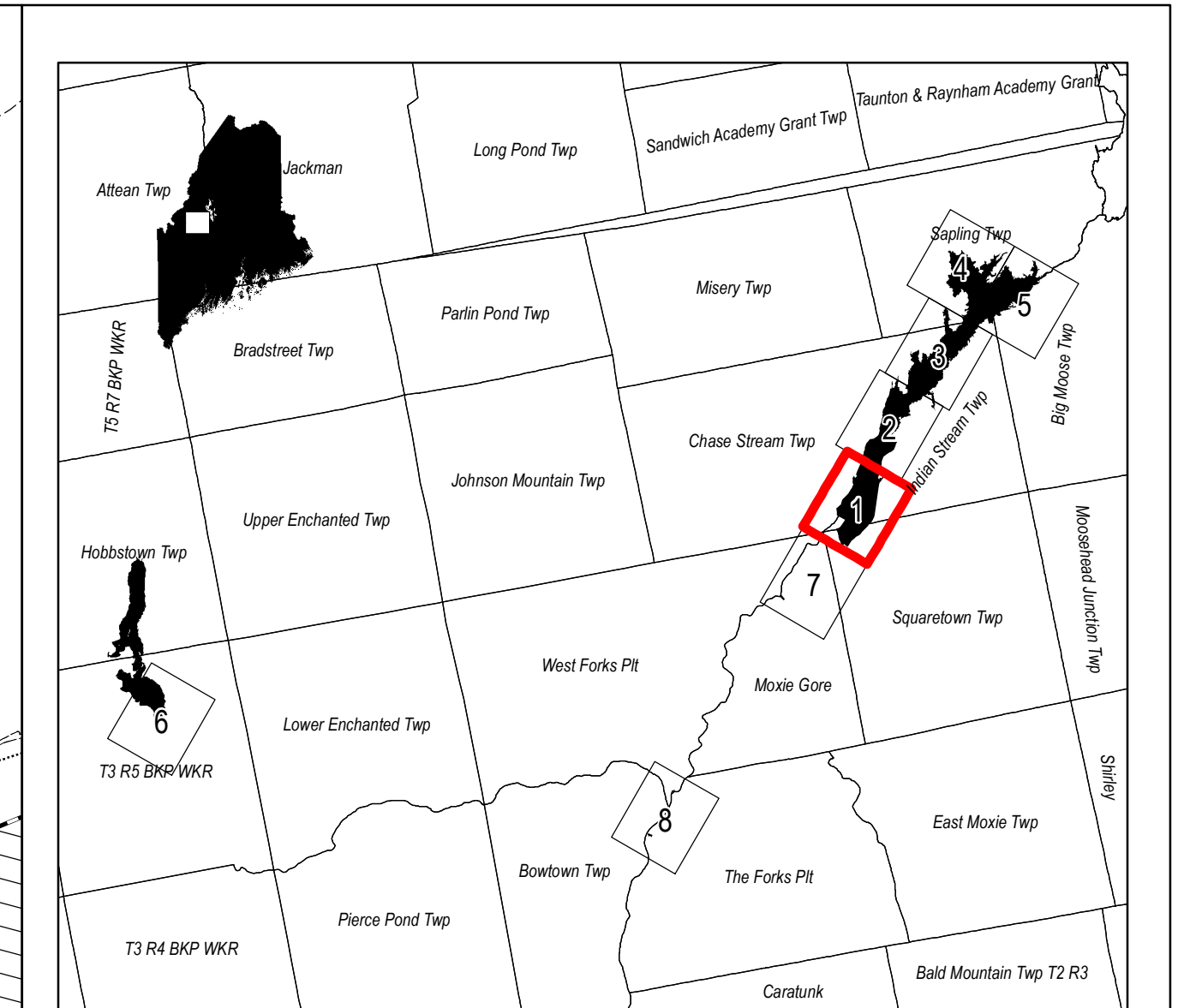
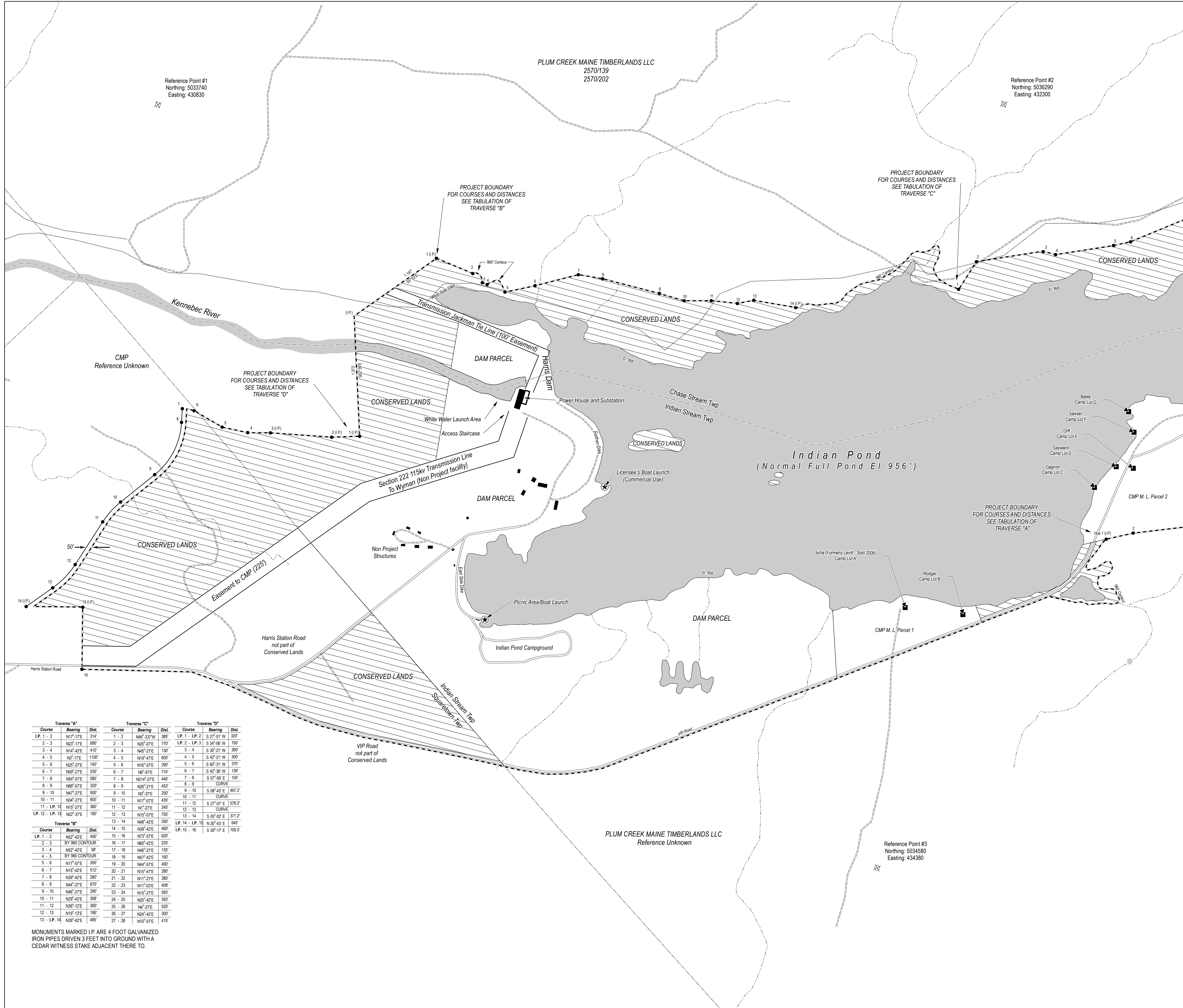


Attachment VIII



Legend

- Reference Point
- County Boundary
- Camp Lot
- Town Boundary
- Camp Site
- Stream
- Docking
- Private Access Road
- Boat Launch
- Private Access Road-Open to Public
- Project Boundary
- Proposed Western Mountain Charitable Foundation Trail
- Conserved Lands
- Flowage Rights (excluded from conservation easement)
- Hydrography

Reference Point Table
NAD83 UTM Zone 19N, Meters

Sheet #	Reference #	Northing	Easting
1	1	5033740.0	430830.0
1	2	5036290.0	432300.0
1	3	5034580.0	434380.0
2	4	5037620.0	432270.0
2	5	5040360.0	433700.0
2	6	5037570.0	435410.0
3	7	5041120.0	434680.0
3	8	5043350.0	435880.0
3	9	5041000.0	437770.0
4	10	5045090.0	435610.0
4	11	5047670.0	437040.0
4	12	5045890.0	439600.0
5	13	5042760.0	439030.0
5	14	5046030.0	439970.0
5	15	5044310.0	442350.0
6	16	5023860.0	398820.0
6	17	5026330.0	399570.0
6	18	5023690.0	401680.0
7	19	5030640.0	428820.0
7	20	5032740.0	430210.0
7	21	5031040.0	432700.0
8	22	5019390.0	421920.0
8	23	5021930.0	423450.0
8	24	5019350.0	425140.0

NOTES:

- PROJECT BOUNDARY IS TO BE THE 960' CONTOUR EXCEPT WHERE SPECIFICALLY NOTED AS OTHERWISE. 960' CONTOUR IS MARKED BY BLAZED TREES WITH THE BLAZE PAINTED YELLOW.
- VIP ROAD, ISLANDS WITHIN THE PROJECT BOUNDARY AND HARRIS DAM DIGITIZED FROM NADP (2009) ORTHOPHOTOGRAPHY COURTESY OF MAINE OFFICE OF GIS (MEGIS). INDIAN POND SHORELINE DIGITIZED FROM USGS 24K TOPOGRAPHIC MAP.
- AS USED ON THESE PLANS, CMP MEANS CENTRAL MAINE POWER COMPANY; FPL MEANS FPL ENERGY MAINE HYDRO LLC; FERC MEANS FEDERAL ENERGY REGULATORY COMMISSION.
- UNLESS OTHERWISE NOTED HEREON OR IN THE DEED, RAILROAD RIGHTS OF WAY, PUBLIC ROADS, BRIDGES, AND THIRD-PARTY UTILITIES ARE NOT PART OF THE FERC LICENSED PROJECT WORKS.
- CMP TRANSMISSION RIGHTS OF WAY ARE RETAINED IN EASEMENT WITHIN THE PROJECT BOUNDARIES.
- UNLESS OTHERWISE NOTED HEREON OR IN THE DEED, PROJECT LANDS INCLUDE ALL LANDS WITHIN THE PROJECT BOUNDARY, INCLUDING ISLANDS IN THE RIVER, THE RIVERBED AND THE POWERHOUSE PARCEL.
- CONTOURS AND ELEVATIONS ARE BASED UPON FEET ABOVE MEAN SEA LEVEL.
- HATCHED AREAS INDICATE CONSERVED LANDS. CONSERVED LANDS GENERALLY INCLUDE LANDS OWNED IN FEE BY LICENSEE UPSTREAM OF THE HARRIS DAM PARCEL BETWEEN USGS CONTOUR ELEVATION 956' AND THE INDIAN POND PROJECT BOUNDARY, EXCLUSIVE OF LEASED LANDS, AND LANDS OWNED IN FEE BY LICENSEE WITHIN THE PROJECT BOUNDARY DOWNSTREAM OF THE HARRIS DAM EXCLUSIVE OF THE DAM PARCEL AND RIVER BED, AS THOSE TERMS ARE DEFINED IN THE CONSERVATION EASEMENT TO THE STATE OF MAINE DEPARTMENT OF CONSERVATION, BUREAU OF PARKS & LANDS DATED JULY, 2011.
- CENTRAL MAINE POWER MASTER LEASE (CMP M.L.) PARCELS 1, 2, 3 & 4 REFERENCE A DEED DATED 04/08/1989 RECORDED IN THE SOMERSET COUNTY REGISTRY OF DEEDS, BOOK 2540, PAGE 24, ALSO RECORDED AT THE PISCATAQUIS COUNTY REGISTRY OF DEEDS, BOOK 1194, PAGE 188.
- THIS PLAN IS NOT A STANDARD BOUNDARY SURVEY. THE PURPOSE OF THIS PLAN IS TO ILLUSTRATE THE LOCATION OF THE PROJECT WORKS, PROJECT BOUNDARY AND CONSERVED LANDS.

STATE OF MAINE
JULIEN
&
FLETCHER
REGISTERED PROFESSIONAL
LAND SURVEYORS

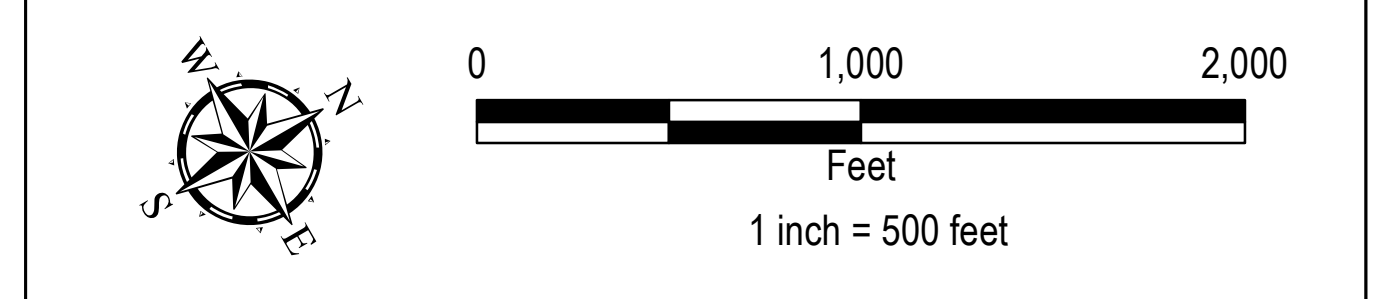


Exhibit G Project Detail Map
Harris Project
FPL Energy Maine Hydro LLC
FERC NO. 2142

Date: Nov 04, 2011 Sheet 1 of 8 Prepared by: TRC

Traverse "A"			Traverse "C"			Traverse "D"		
Course	Bearing	Dist.	Course	Bearing	Dist.	Course	Bearing	Dist.
LP. 1 - 2	N17°-17'E	314'	1 - 2	N46°-33'W	385'	LP. 1 - LP. 2	S 27°-51' W	320'
2 - 3	N23°-15'E	650'	2 - 3	N42°-07'E	170'	LP. 2 - LP. 3	S 04°-36' W	700'
3 - 4	N14°-42'E	410'	3 - 4	N42°-27'E	130'	3 - 4	S 30°-21' W	200'
4 - 5	N3°-17'E	1100'	4 - 5	N19°-47'E	605'	4 - 5	S 42°-36' W	300'
5 - 6	N25°-27'E	740'	5 - 6	N19°-57'E	290'	5 - 6	S 60°-31' W	370'
6 - 7	N29°-27'E	535'	6 - 7	N6°-57'E	774'	6 - 7	S 42°-36' W	139'
7 - 8	N54°-57'E	565'	7 - 8	N214°-27'E	440'	7 - 8	S 57°-09' E	155'
8 - 9	N69°-57'E	320'	8 - 9	N26°-21'E	455'	8 - 9	CURVE	
9 - 10	N47°-27'E	550'	9 - 10	N5°-37'E	295'	9 - 10	S 08°-43' E	497.2'
10 - 11	N34°-27'E	665'	10 - 11	N17°-07'E	435'	10 - 11	CURVE	
11 - LP. 12	N15°-27'E	360'	11 - 12	N1°-27'E	245'	11 - 12	S 27°-07' E	578.2'
LP. 12 - LP. 13	N22°-37'E	190'	12 - 13	CURVE		12 - 13	CURVE	
			12 - 13	N15°-07'E	755'	13 - 14	S 09°-02' E	371.2'
			13 - 14	N45°-42'E	350'	LP. 14 - LP. 15	N 30°-43' E	645'
			14 - 15	N39°-42'E	460'	LP. 15 - 16	S 59°-17' E	709.9'
			15 - 16	N73°-57'E	620'			
			16 - 17	N45°-42'E	225'			
			17 - 18	N45°-27'E	135'			
			18 - 19	N37°-42'E	160'			
			19 - 20	N44°-57'E	400'			
			20 - 21	N15°-47'E	280'			
			21 - 22	N11°-27'E	385'			
			22 - 23	N11°-03'E	408'			
			23 - 24	N15°-27'E	595'			
			24 - 25	N42°-42'E	360'			
			25 - 26	N4°-27'E	520'			
			26 - 27	N24°-42'E	300'			
			27 - 28	N10°-57'E	415'			

MONUMENTS MARKED I.P. ARE 4 FOOT GALVANIZED IRON PIPES DRIVEN 3 FEET INTO GROUND WITH A CEDAR WITNESS STAKE ADJACENT THERE TO.