



Photograph 1: View looking southwest from the summit observation tower on Coburn Mountain. The Project is not located within this southwest field of view and therefore will not be visible when looking in this direction.



Photograph 2: View looking northeast from the summit observation tower on Coburn Mountain. The Project will not be visible looking in this direction due to foreground vegetation.



Photograph 3: Panoramic view looking southeast from the summit observation tower on Coburn Mountain. The closest portion of the proposed 150' wide corridor clearing will be visible in the mid-ground on the west side of Johnson Mountain approximately 1.2 miles from this viewpoint. See Photosimulation 8 in Appendix D.



Photograph 4: Panoramic view looking southwest from the summit observation tower on Coburn Mountain. The closest portion of the proposed 150' wide corridor clearing will be visible approximately 3.5 miles from this viewpoint.



Photograph 5: View looking southwest at the start of the descent along the summit snowmobile trail on Coburn Mountain. The Project will not be visible in this area due to foreground evergreen vegetation.



Photograph 6: View looking south along the summit snowmobile trail descending down Coburn Mountain. The Project will not be visible in this area due to foreground evergreen vegetation.



Photograph 7: Panoramic view looking east from a cleared area mid-way up Coburn Mountain. The Project will not be visible in this area due to foreground evergreen vegetation.



Photograph 8: View looking northwest of communication structures in the cleared area mid-way up Coburn Mountain.



Photograph 9: View looking east along the lower snowmobile trail descending down Coburn Mountain. A glimpse of the Project may be visible through openings in vegetation while descending in this area.



Photograph 10: Panoramic view looking northwest towards the Coburn Mountain trail head from a point on ITS 89. The Project will not be visible in this direction.



Photograph 11: Panoramic view looking east near the Coburn Mountain trail head from a point on ITS 89. The Project will be visible crossing ITS 89 approximately 300 feet from this viewpoint.



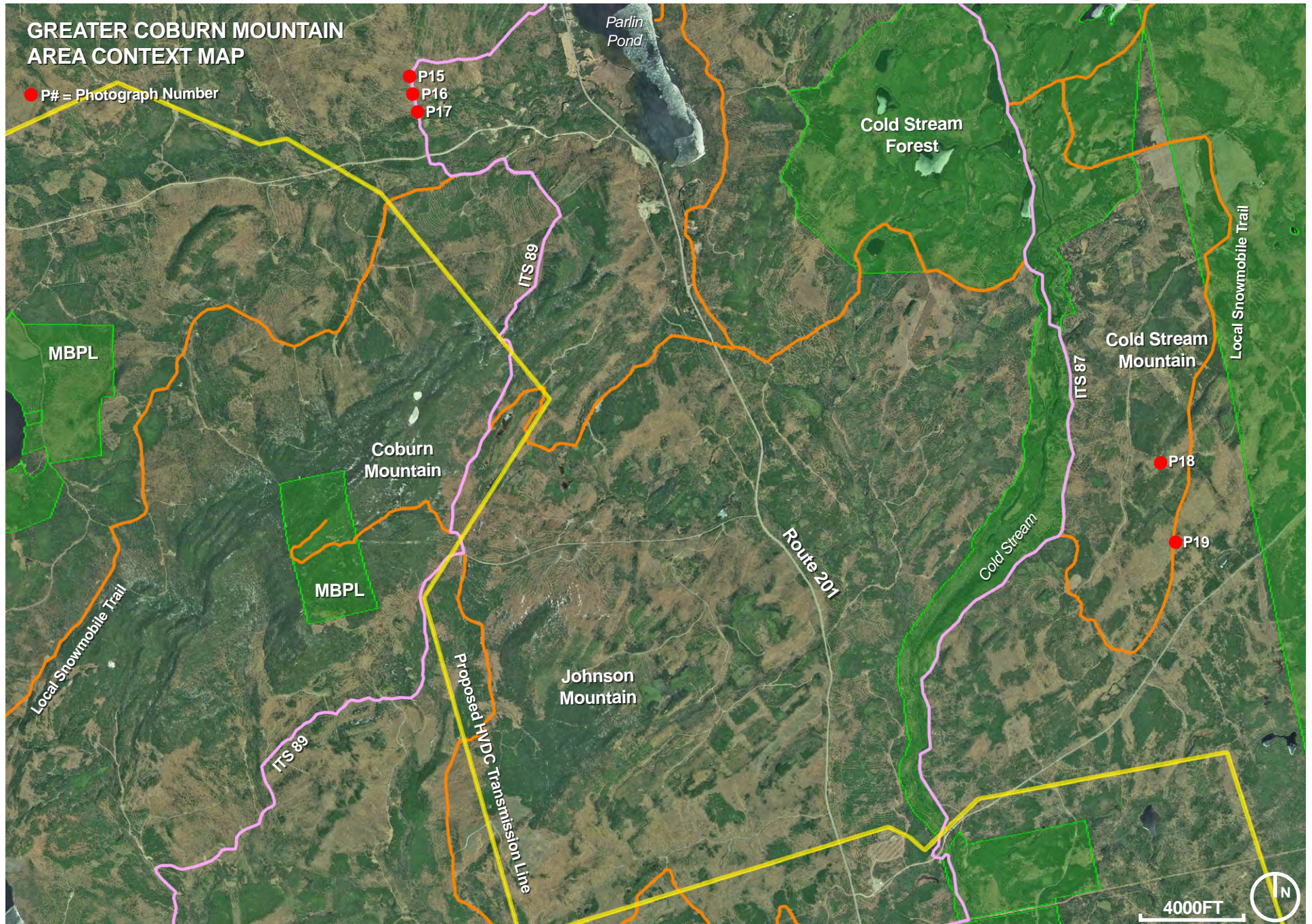
Photograph 12: Panoramic view looking west towards the Project from a local snowmobile trail on Judd Road. The southern portion of Coburn Mountain is visible in the background. Tops of structures and conductors may be visible above the foreground harvested area and mid-ground vegetation.



Photograph 13: View looking south along a local snowmobile and ATV trail on Judd Road, from a point within the proposed new HVDC corridor.



Photograph 14: View looking southwest along Judd Road from a point within the proposed new HVDC corridor.





Photograph 15: View looking south from ITS 89 while descending toward Coburn Mountain. The project will be visible crossing over part of Coburn Mountain approximately 2 miles from this viewpoint.



Photograph 16: View looking south from ITS 89 while descending toward Coburn Mountain. The project will be visible crossing over part of Coburn Mountain approximately 1.9 miles from this viewpoint.



Photograph 17: Panoramic view looking south from a recent clearing on ITS 89 while descending toward Coburn Mountain. The project will be visible crossing over part of Coburn Mountain approximately 1.8 miles from this viewpoint.





Photograph 18: Panoramic view looking west towards the Coburn Mountain from a large cleared area near ITS 87/Local Snowmobile trails. The clearing provides view towards Johnson Mountain (left side of image) and Coburn Mountain (middle of image). The Project will be visible 4.5 miles from this viewpoint.



Photograph 19: Panoramic view looking southeast near Cold Stream Mountain along an ITS/Local Snowmobile Trail. Mosquito Mountain is visible in the center of the image. The Project will be visible in the mid-ground valley 1.5 miles away from this viewpoint.