

An aerial photograph showing a wide, meandering river with numerous oxbow-like curves. The river is surrounded by dense green forest and marshy areas. The water appears light blue or greyish. The overall scene is a lush, natural landscape.

**Great Heath / Pleasant River**  
Downeast Wind Visual Assessment Review  
Exhibit A











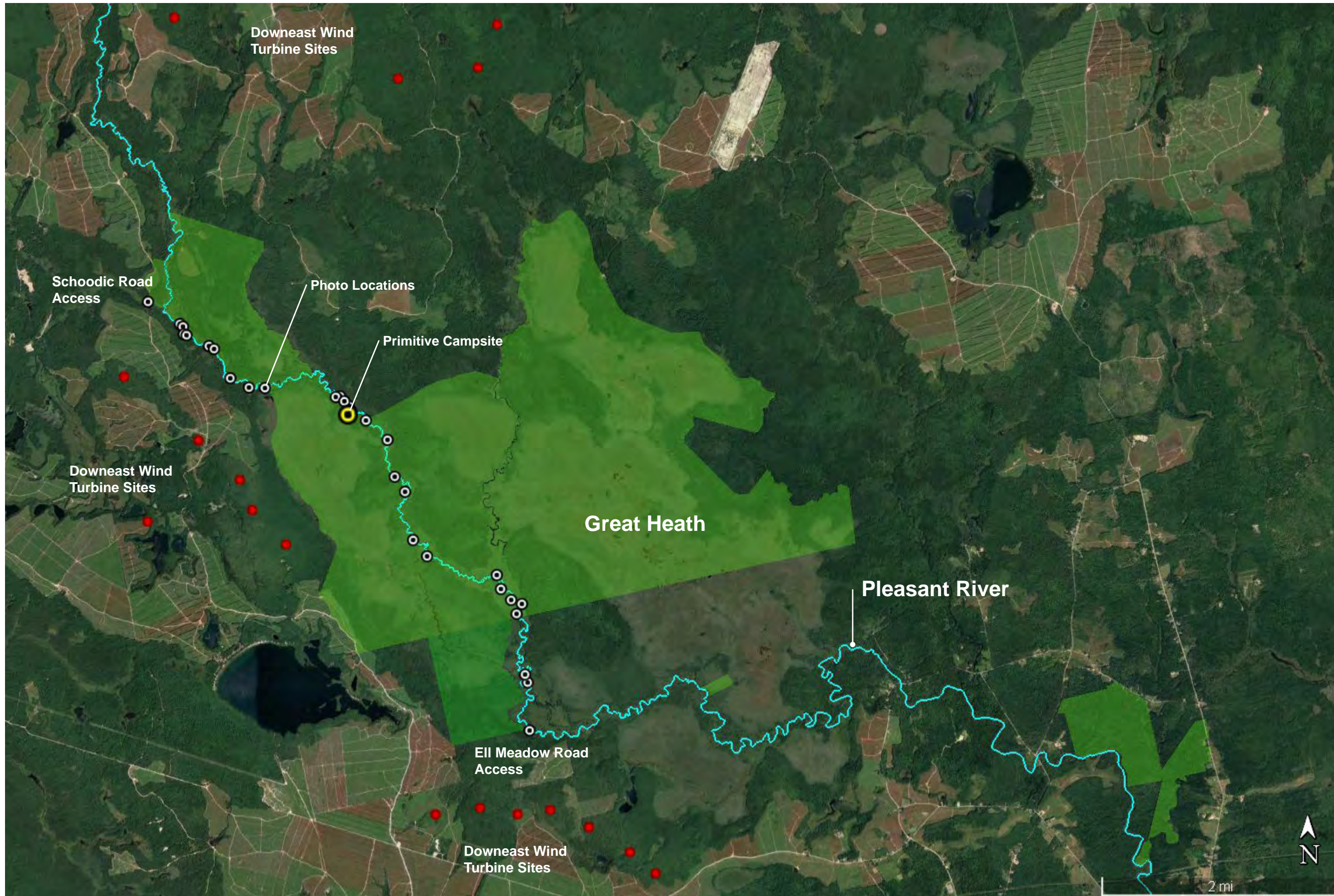






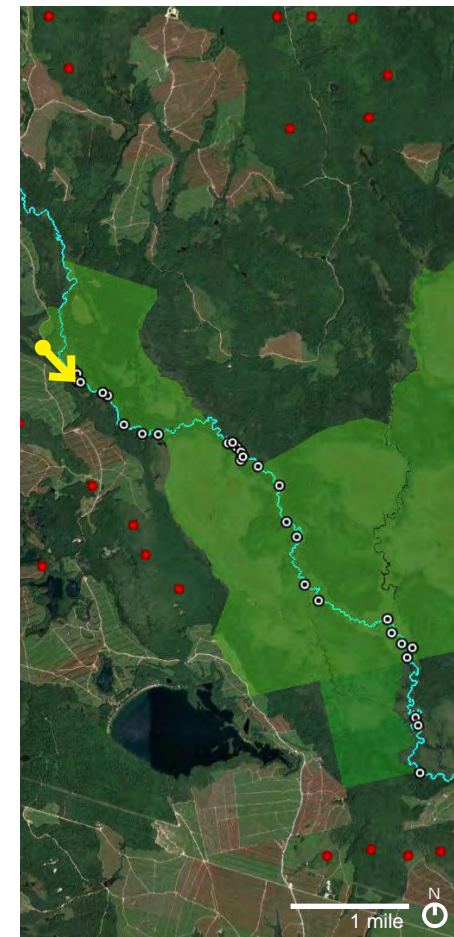


**Downeast Wind**  
Great Heath / Pleasant River  
Visual Assessment





**Downeast Wind**  
**Great Heath / Pleasant River**  
**Visual Assessment**

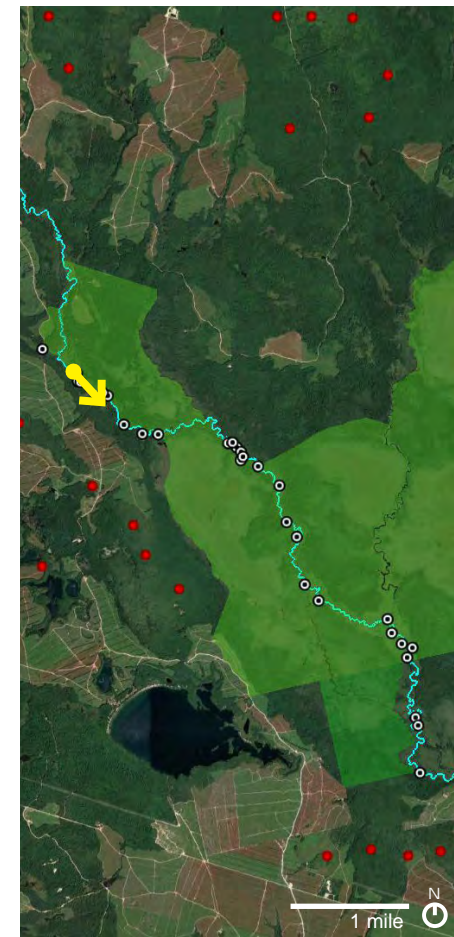


**LOCATION 1 - SCHOODIC ROAD ACCESS - SE, No Project Visibility**  
**EXISTING CONDITIONS PHOTOGRAPH**

SITE MAP



**Downeast Wind**  
**Great Heath / Pleasant River**  
**Visual Assessment**

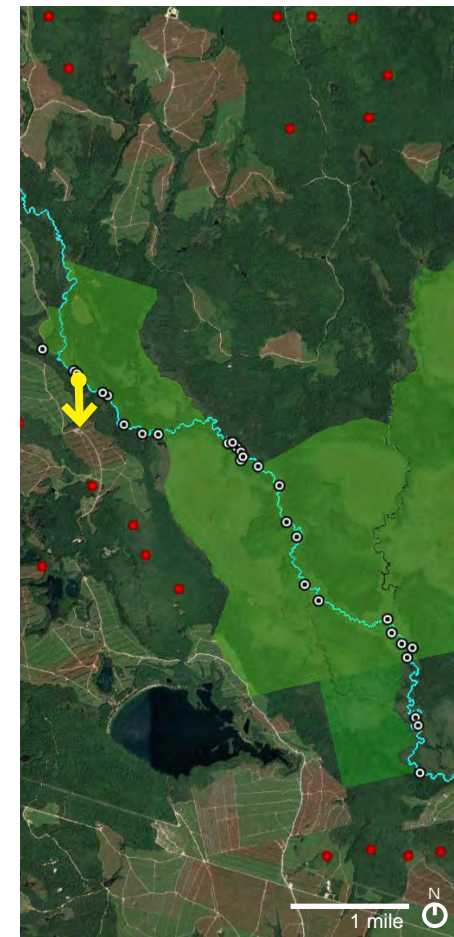


**LOCATION 2 - SE, No Project Visibility**  
**EXISTING CONDITIONS PHOTOGRAPH**

SITE MAP



**Downeast Wind**  
**Great Heath / Pleasant River**  
**Visual Assessment**



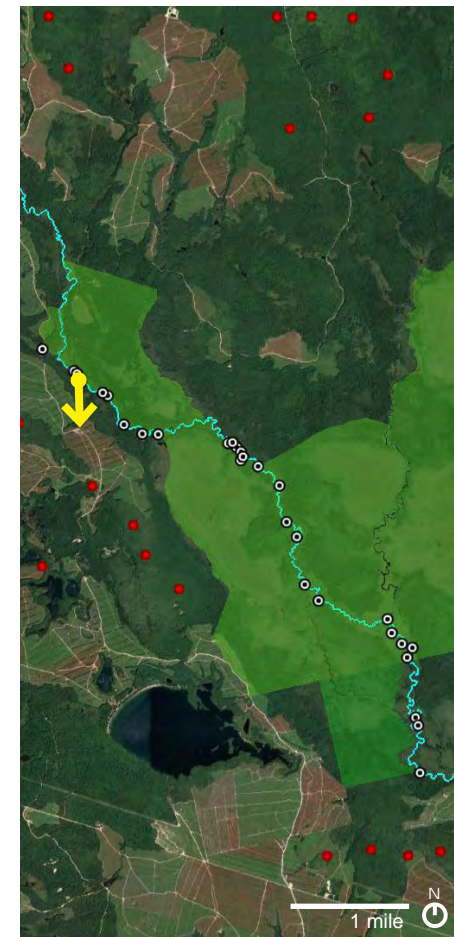
**LOCATION 3 - S**  
**EXISTING CONDITIONS PHOTOGRAPH**

SITE MAP



**Downeast Wind  
Great Heath / Pleasant River  
Visual Assessment**

**Preliminary Overlays  
Produced in Google Earth**

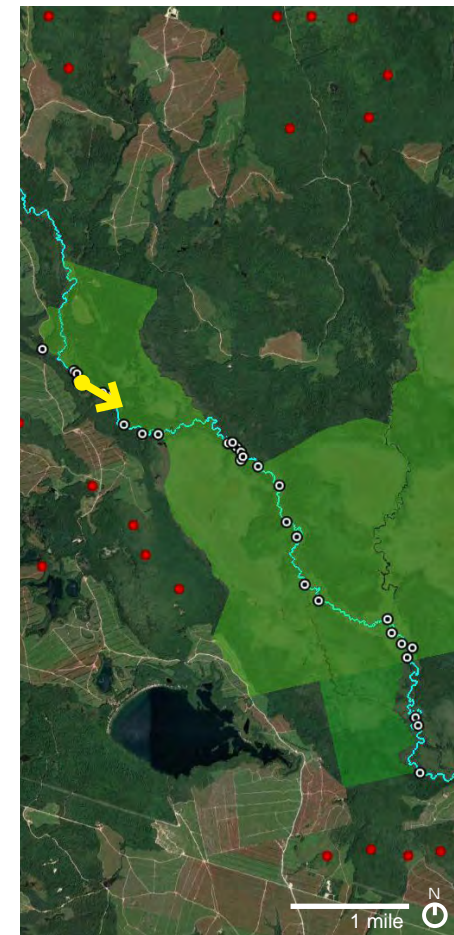


**LOCATION 3 - S, Project Visibility 1 Mile from Viewpoint  
SIMULATION SHOWING PROJECT VISIBILITY**

**SITE MAP**



**Downeast Wind**  
**Great Heath / Pleasant River**  
**Visual Assessment**

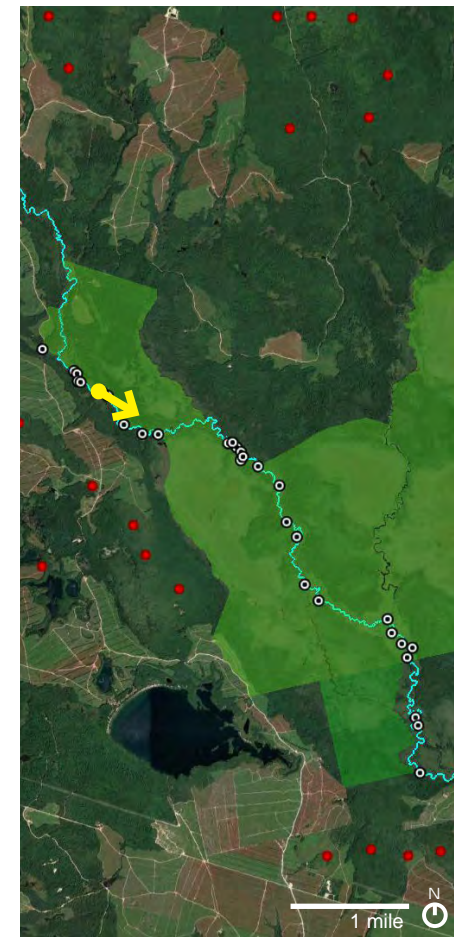


**LOCATION 4 - SE, No Project Visibility**  
**EXISTING CONDITIONS PHOTOGRAPH**

SITE MAP



**Downeast Wind**  
**Great Heath / Pleasant River**  
**Visual Assessment**

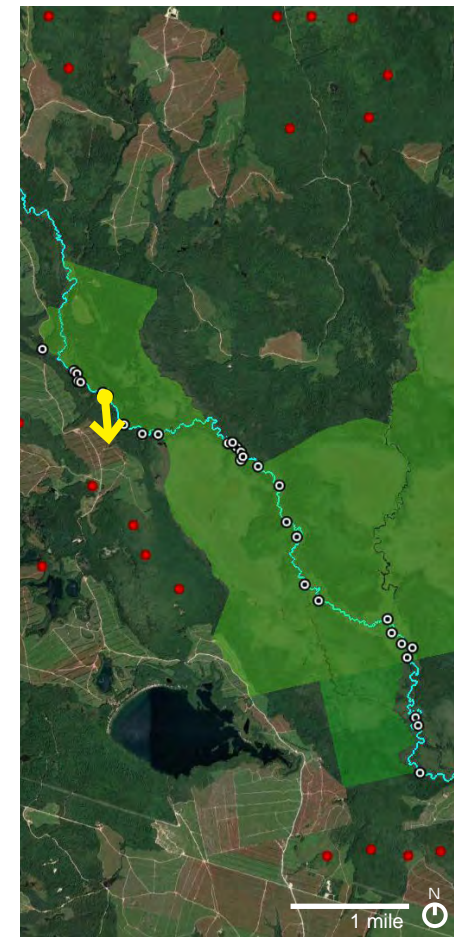


**LOCATION 5 - SE, No Project Visibility**  
**EXISTING CONDITIONS PHOTOGRAPH**

SITE MAP



**Downeast Wind**  
**Great Heath / Pleasant River**  
**Visual Assessment**



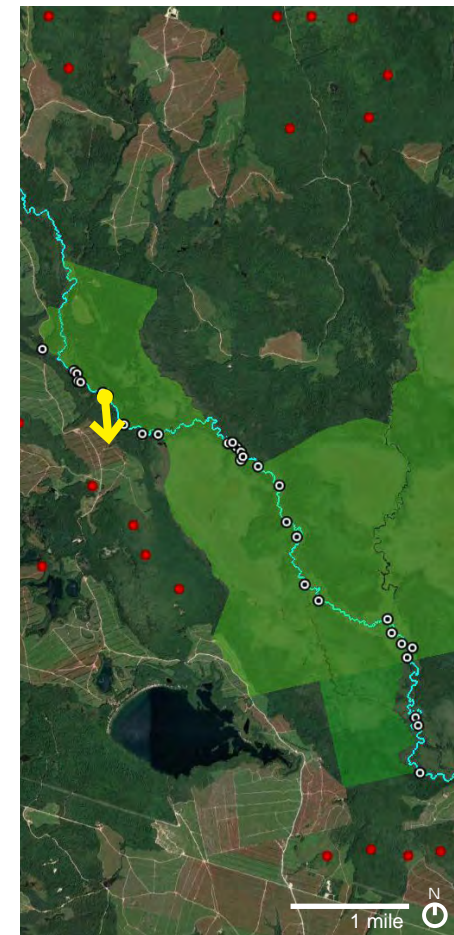
**LOCATION 6 - S**  
**EXISTING CONDITIONS PHOTOGRAPH**

SITE MAP



**Downeast Wind  
Great Heath / Pleasant River  
Visual Assessment**

**Preliminary Overlays  
Produced in Google Earth**

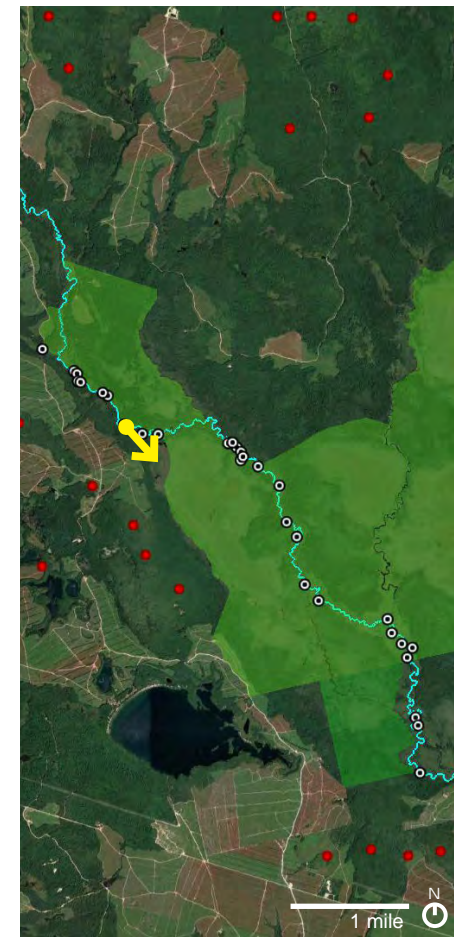


**LOCATION 6 - S, Project Visibility 1.1 Miles from Viewpoint  
SIMULATION SHOWING PROJECT VISIBILITY**

**SITE MAP**



**Downeast Wind**  
**Great Heath / Pleasant River**  
**Visual Assessment**

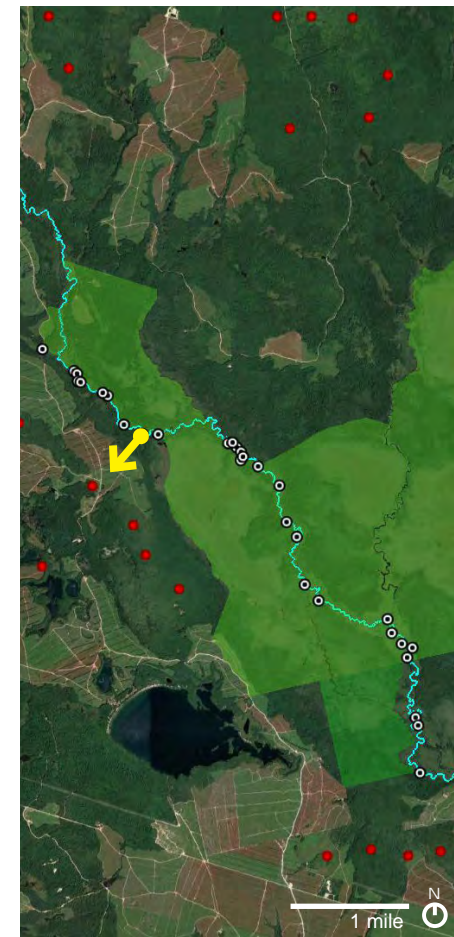


**LOCATION 7 - SE No Project Visibility**  
**EXISTING CONDITIONS PHOTOGRAPH**

SITE MAP



**Downeast Wind**  
**Great Heath / Pleasant River**  
**Visual Assessment**



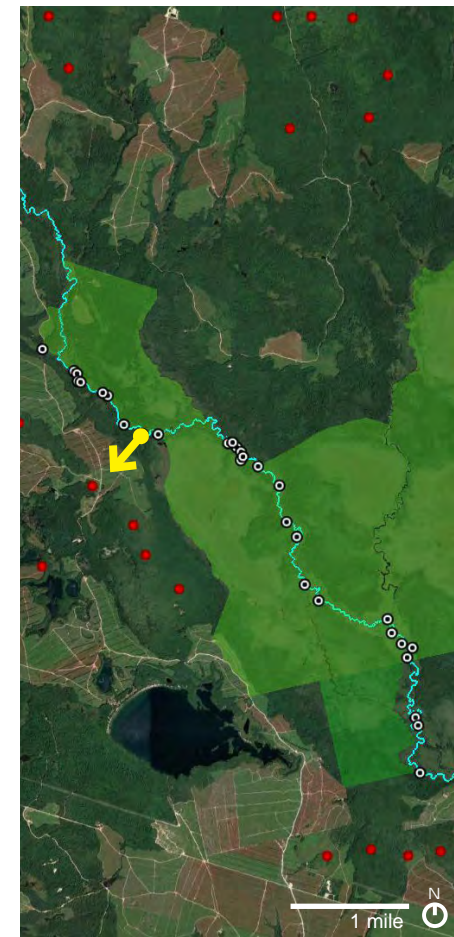
**LOCATION 8 - SW**  
**EXISTING CONDITIONS PHOTOGRAPH**

SITE MAP



**Downeast Wind**  
**Great Heath / Pleasant River**  
**Visual Assessment**

**Preliminary Overlays**  
**Produced in Google Earth**

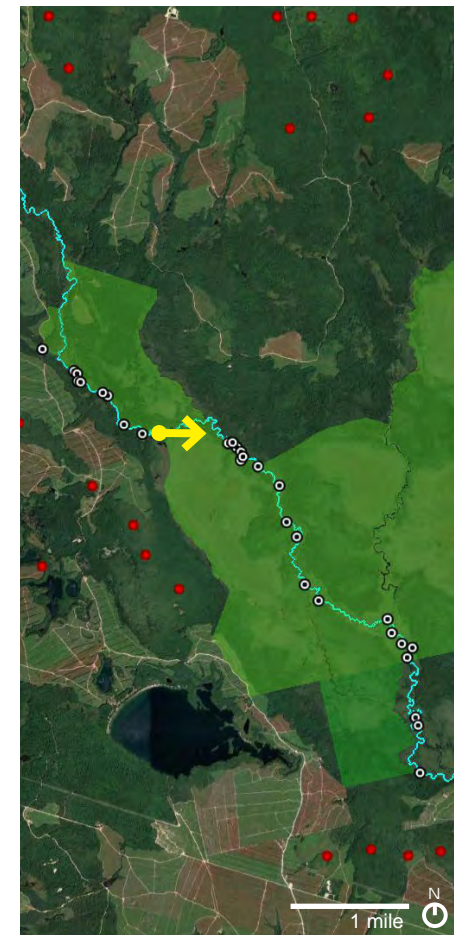


**LOCATION 8 - SW, Project Visibility 0.6 Miles from Viewpoint**  
**SIMULATION SHOWING PROJECT VISIBILITY**

SITE MAP



**Downeast Wind**  
**Great Heath / Pleasant River**  
**Visual Assessment**

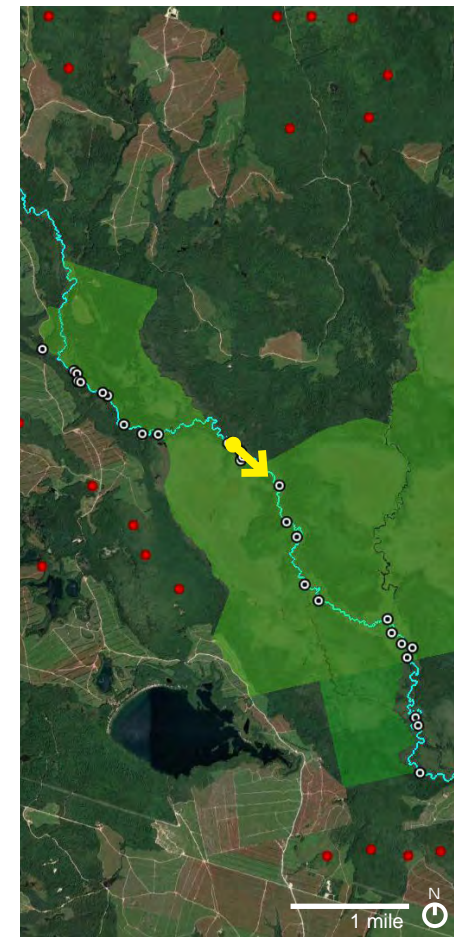


**LOCATION 9 - E, No Project Visibility**  
**EXISTING CONDITIONS PHOTOGRAPH**

SITE MAP



**Downeast Wind**  
**Great Heath / Pleasant River**  
**Visual Assessment**

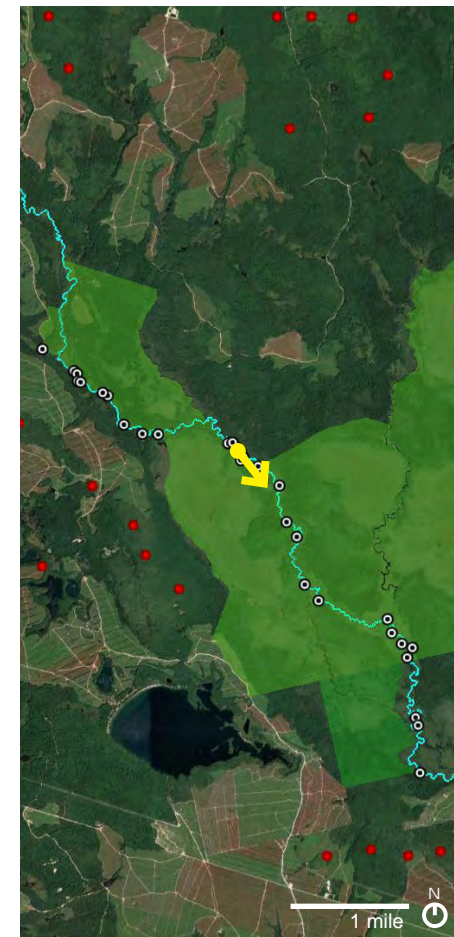


**LOCATION 10 - SE, No Project Visibility**  
**EXISTING CONDITIONS PHOTOGRAPH**

SITE MAP



**Downeast Wind**  
**Great Heath / Pleasant River**  
**Visual Assessment**

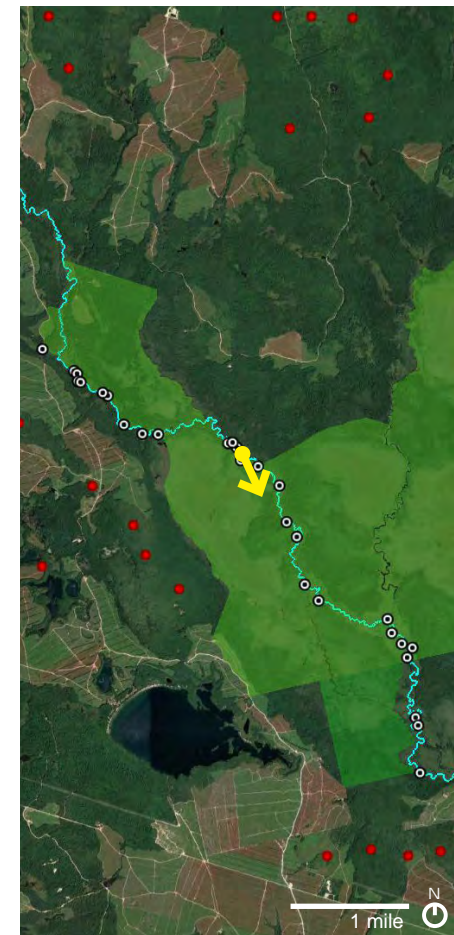


**LOCATION 11 - SE, No Project Visibility**  
**EXISTING CONDITIONS PHOTOGRAPH**

SITE MAP



**Downeast Wind**  
**Great Heath / Pleasant River**  
**Visual Assessment**



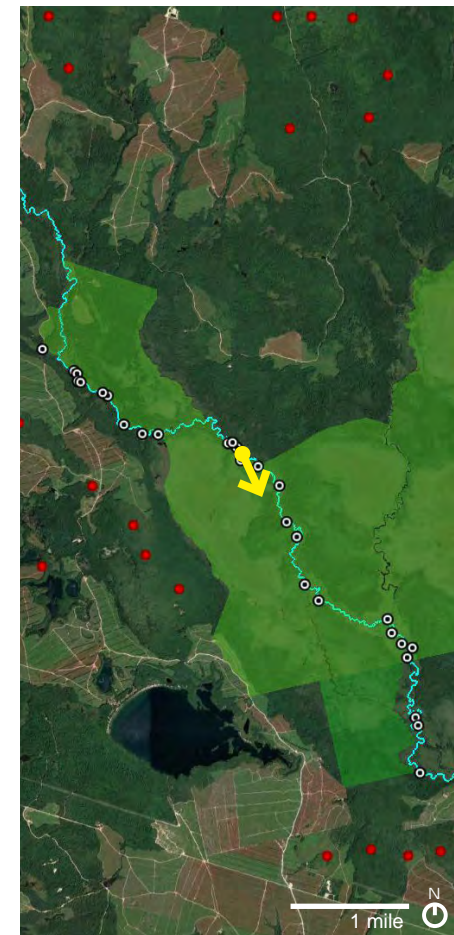
**LOCATION 12 - SE**  
**EXISTING CONDITIONS PHOTOGRAPH**

SITE MAP



**Downeast Wind**  
Great Heath / Pleasant River  
Visual Assessment

Preliminary Overlays  
Produced in Google Earth

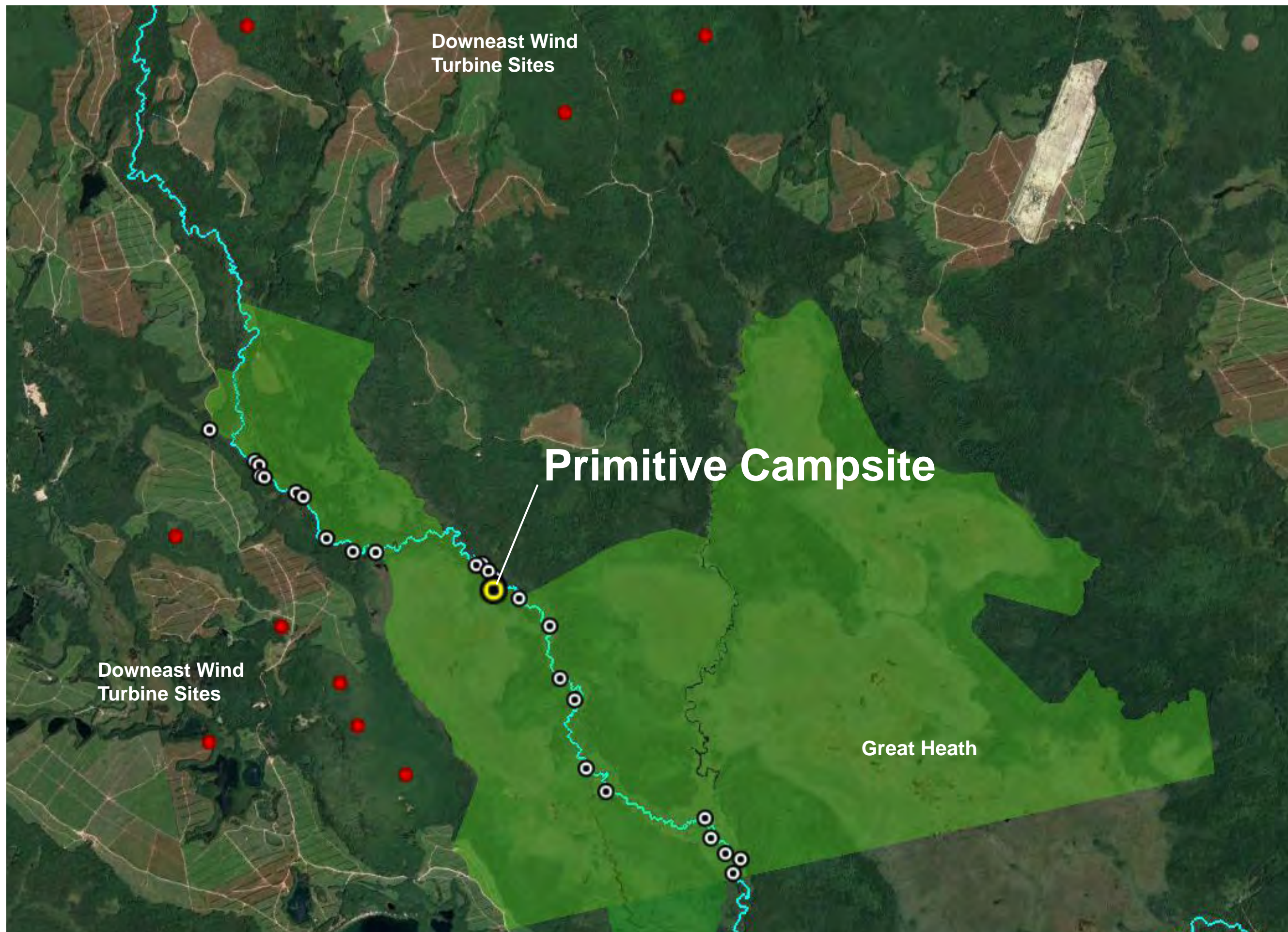


**LOCATION 12 - SE, Project Visibility 3.6 Miles from Viewpoint**  
**SIMULATION SHOWING PROJECT VISIBILITY**

SITE MAP

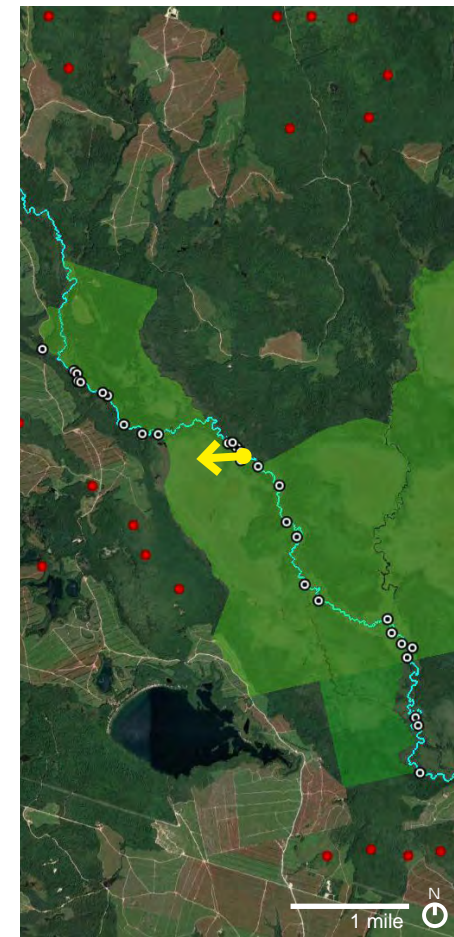


**Downeast Wind**  
Great Heath / Pleasant River  
Visual Assessment





**Downeast Wind**  
**Great Heath / Pleasant River**  
**Visual Assessment**



**LOCATION 13 - W**

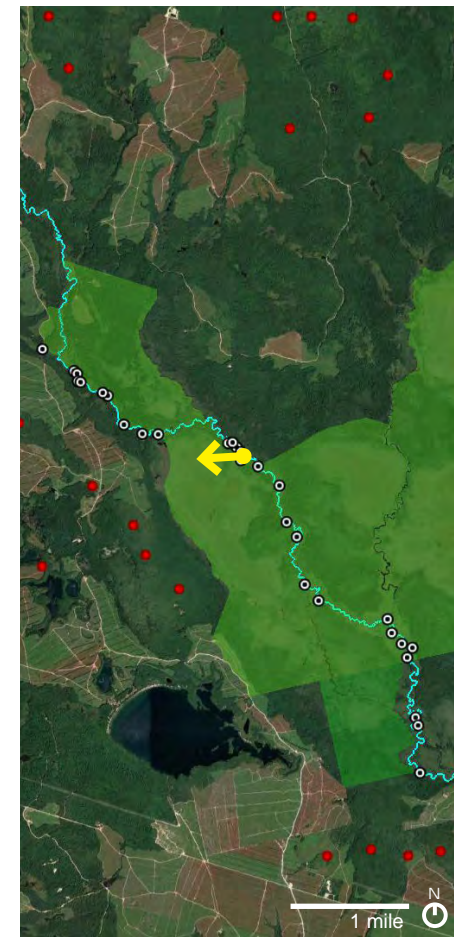
**EXISTING CONDITIONS PHOTOGRAPH: Approach to Primitive Campsite**

**SITE MAP**



**Downeast Wind**  
**Great Heath / Pleasant River**  
**Visual Assessment**

**Preliminary Overlays**  
**Produced in Google Earth**

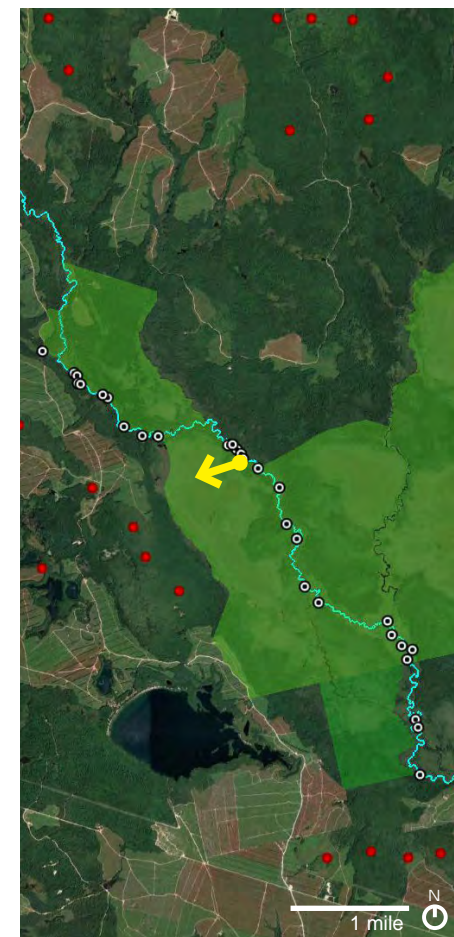


**LOCATION 13 - W, Project Visibility 1.1 Miles from Viewpoint**  
**SIMULATION SHOWING PROJECT VISIBILITY: : Approach to Primitive Campsite**

SITE MAP



**Downeast Wind**  
**Great Heath / Pleasant River**  
**Visual Assessment**



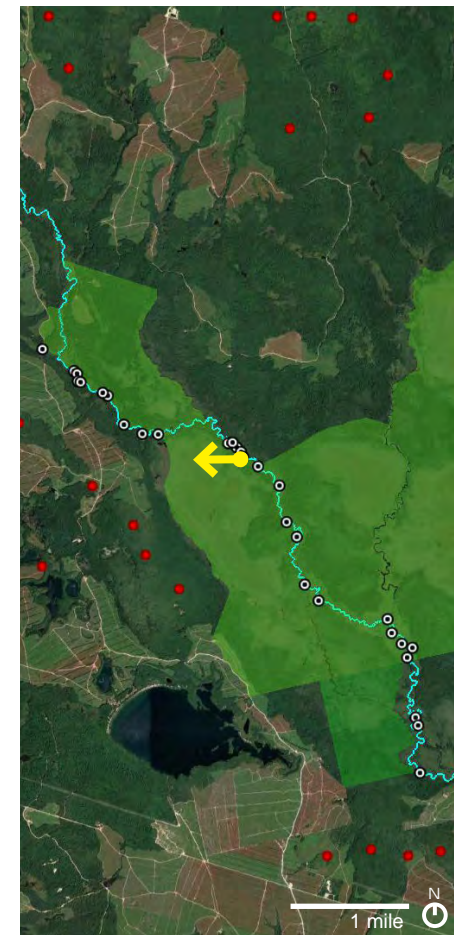
**LOCATION 14 - SW, Project Visibility Negligible**

**EXISTING CONDITIONS PHOTOGRAPH: : View of Primitive Campsite**

**SITE MAP**



**Downeast Wind**  
**Great Heath / Pleasant River**  
**Visual Assessment**



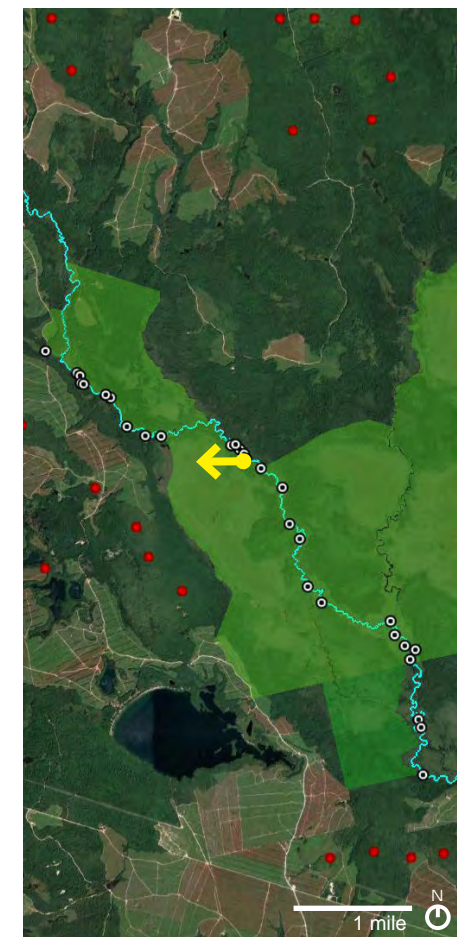
**LOCATION 14 - W**  
**EXISTING CONDITIONS PHOTOGRAPH: View of Primitive Campsite**

SITE MAP



**Downeast Wind**  
**Great Heath / Pleasant River**  
**Visual Assessment**

Preliminary Overlays  
Produced in Google Earth

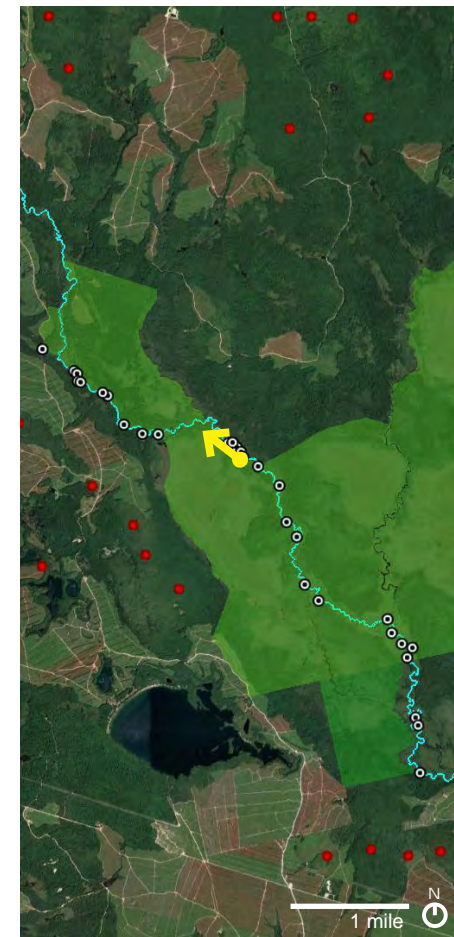


**LOCATION 14 - W, Project Visibility 1.3 Miles from Viewpoint**  
**SIMULATION SHOWING PROJECT VISIBILITY: View of Primitive Campsite**

SITE MAP



**Downeast Wind**  
**Great Heath / Pleasant River**  
**Visual Assessment**



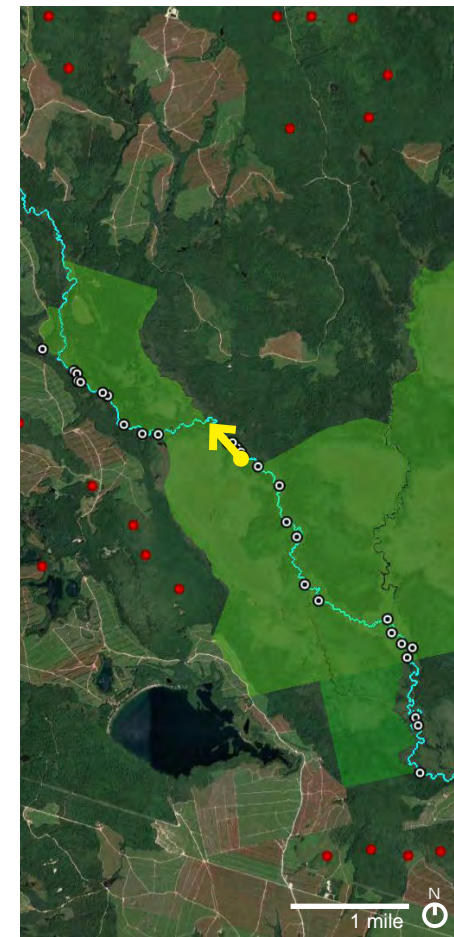
**LOCATION 14 - NW, No Project Visibility**

**EXISTING CONDITIONS PHOTOGRAPH: View from Primitive Campsite**

SITE MAP



**Downeast Wind**  
**Great Heath / Pleasant River**  
**Visual Assessment**



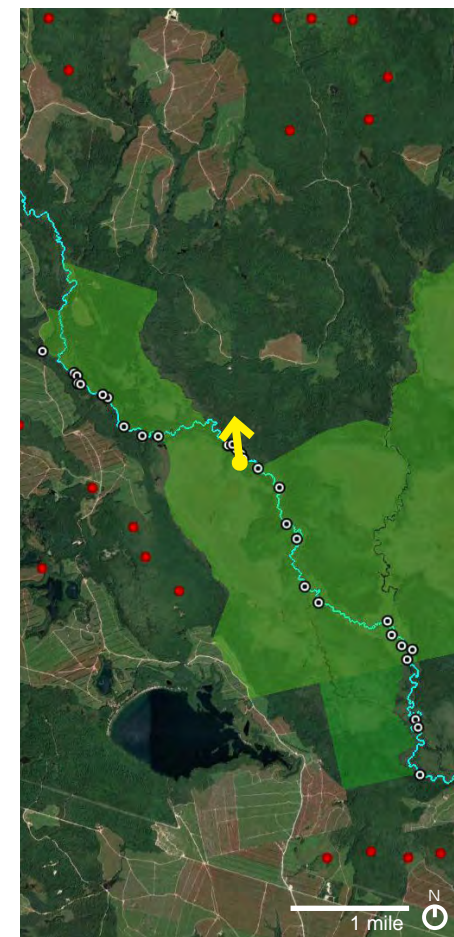
**LOCATION 14 - NW, No Project Visibility**

**EXISTING CONDITIONS PHOTOGRAPH: View from Primitive Campsite**

SITE MAP



**Downeast Wind**  
**Great Heath / Pleasant River**  
**Visual Assessment**



**LOCATION 14 - N**

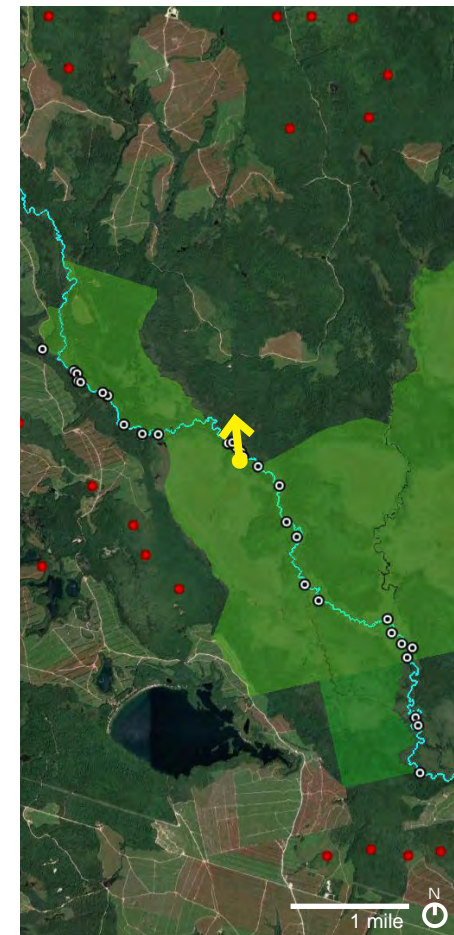
**EXISTING CONDITIONS PHOTOGRAPH: View from Primitive Campsite**

**SITE MAP**



**Downeast Wind**  
Great Heath / Pleasant River  
Visual Assessment

Preliminary Overlays  
Produced in Google Earth

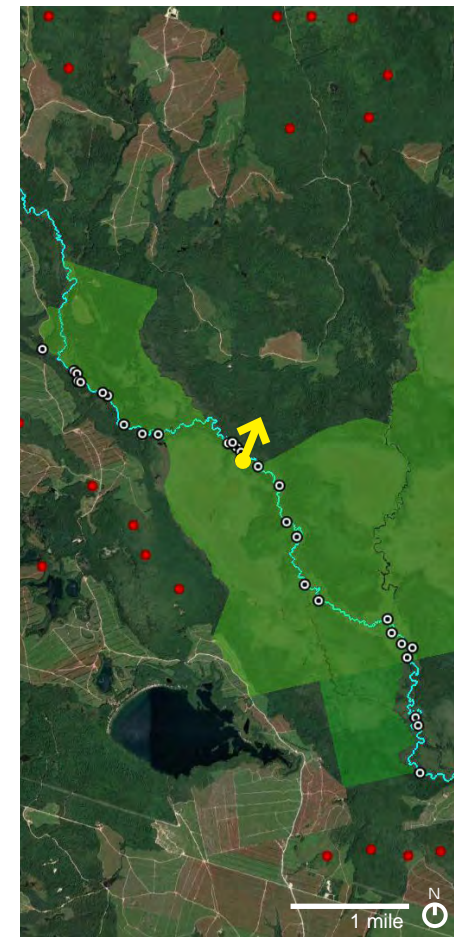


**LOCATION 14 - N, Project Visibility 3 Miles from Viewpoint**  
**SIMULATION SHOWING PROJECT VISIBILITY: View from Primitive Campsite**

SITE MAP



**Downeast Wind**  
**Great Heath / Pleasant River**  
**Visual Assessment**



**LOCATION 14 - NE**

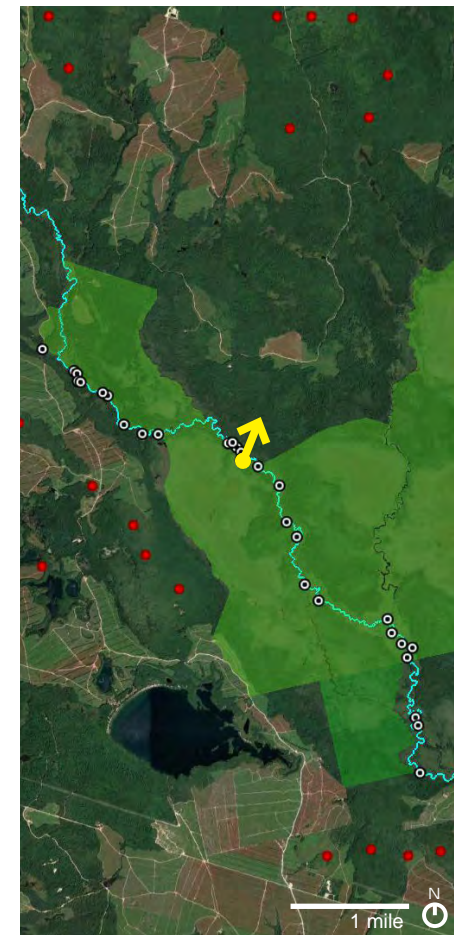
**EXISTING CONDITIONS PHOTOGRAPH: View from Primitive Campsite**

**SITE MAP**



**Downeast Wind**  
**Great Heath / Pleasant River**  
**Visual Assessment**

**Preliminary Overlays**  
**Produced in Google Earth**



**LOCATION 14 - NE, Project Visibility 3 Miles from Viewpoint**

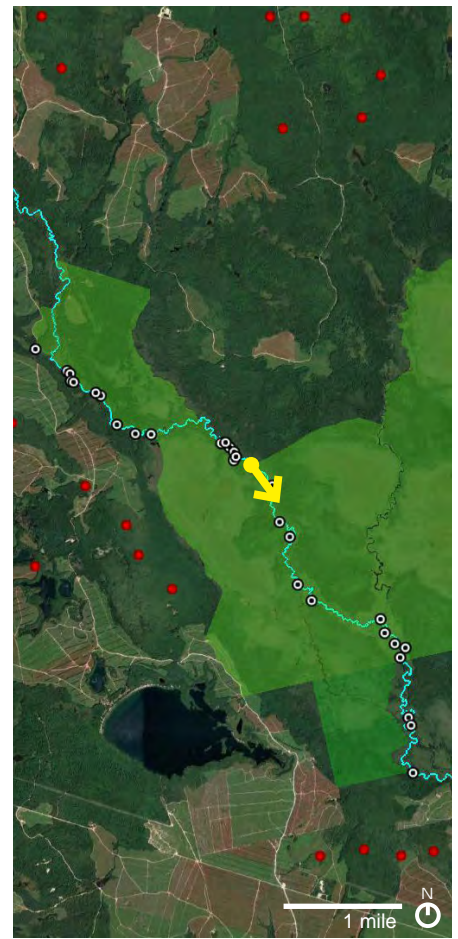
**DRAFT SIMULATION SHOWING PROJECT VISIBILITY: View from Primitive Campsite**

**SITE MAP**



# Back to paddling on Pleasant River south of primitive campsite

## Downeast Wind Great Heath / Pleasant River Visual Assessment

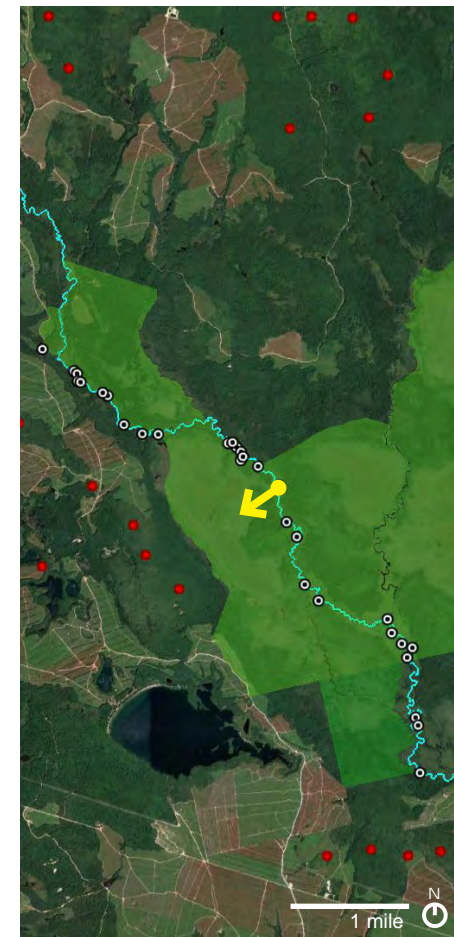


**LOCATION 15 - SE, No Project Visibility**  
**EXISTING CONDITIONS PHOTOGRAPH**

SITE MAP



**Downeast Wind**  
Great Heath / Pleasant River  
Visual Assessment



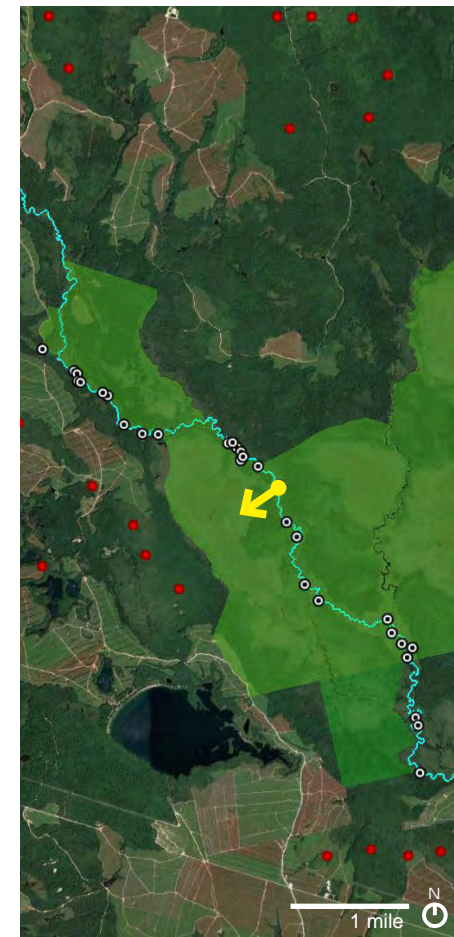
**LOCATION 16 - SW**  
**EXISTING CONDITIONS PHOTOGRAPH**

SITE MAP



**Downeast Wind**  
Great Heath / Pleasant River  
Visual Assessment

Preliminary Overlays  
Produced in Google Earth

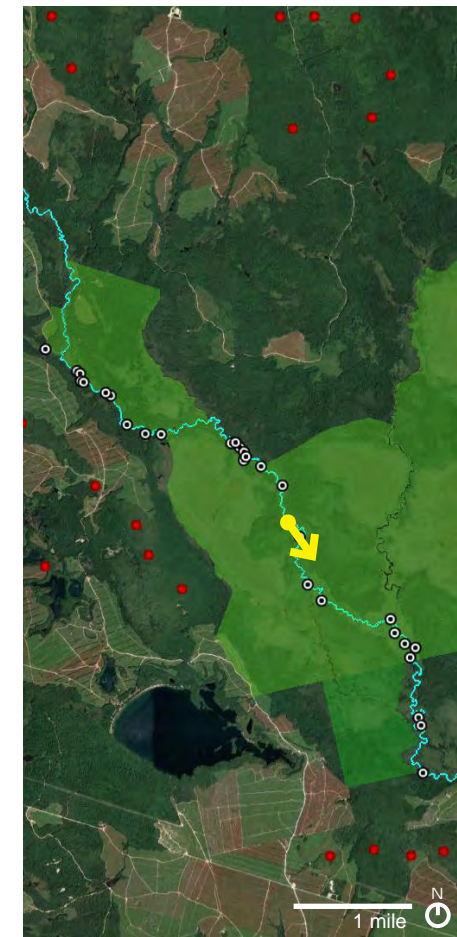


**LOCATION 16 - SW, Project Visibility 1.2 Miles from Viewpoint**  
**SIMULATION SHOWING PROJECT VISIBILITY**

SITE MAP



**Downeast Wind**  
**Great Heath / Pleasant River**  
**Visual Assessment**

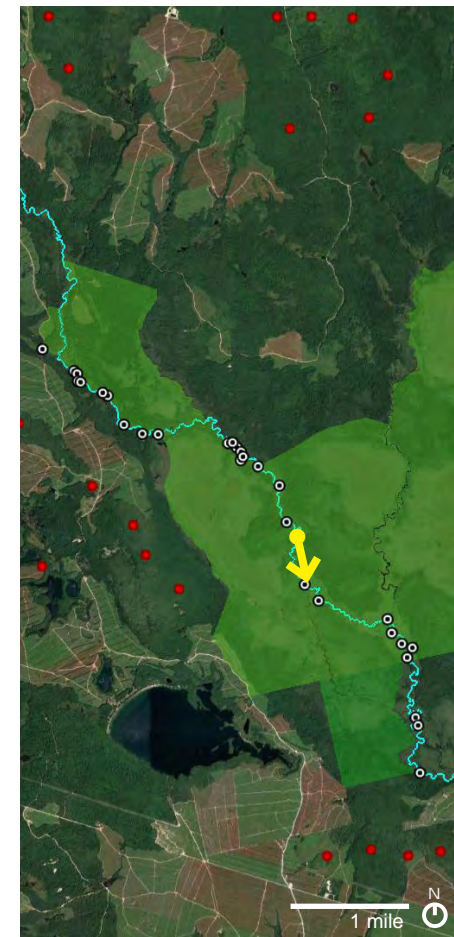


**LOCATION 17 - SE, No Project Visibility**  
**EXISTING CONDITIONS PHOTOGRAPH**

SITE MAP



**Downeast Wind**  
**Great Heath / Pleasant River**  
**Visual Assessment**



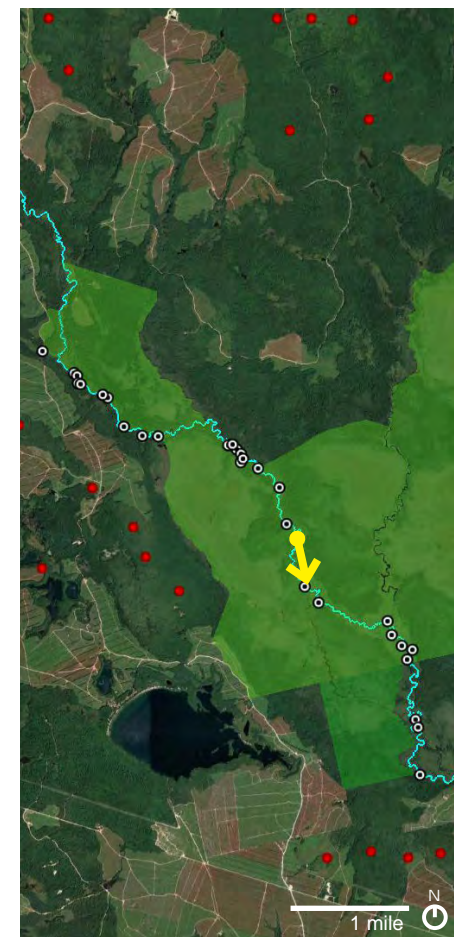
**LOCATION 18 - SE**  
**EXISTING CONDITIONS PHOTOGRAPH**

SITE MAP



**Downeast Wind**  
**Great Heath / Pleasant River**  
**Visual Assessment**

**Preliminary Overlays**  
**Produced in Google Earth**

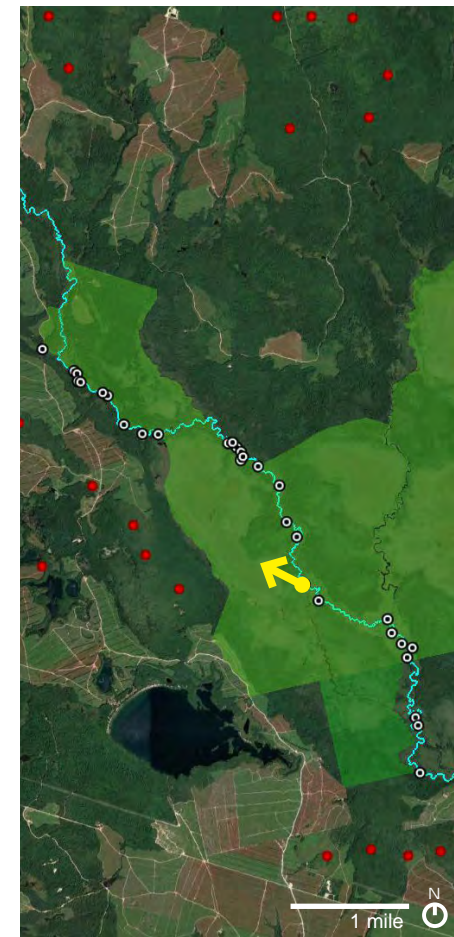


**LOCATION 18 - SE, Project Visibility 2.8 Miles from Viewpoint**  
**SIMULATION SHOWING PROJECT VISIBILITY**

SITE MAP



**Downeast Wind**  
**Great Heath / Pleasant River**  
**Visual Assessment**



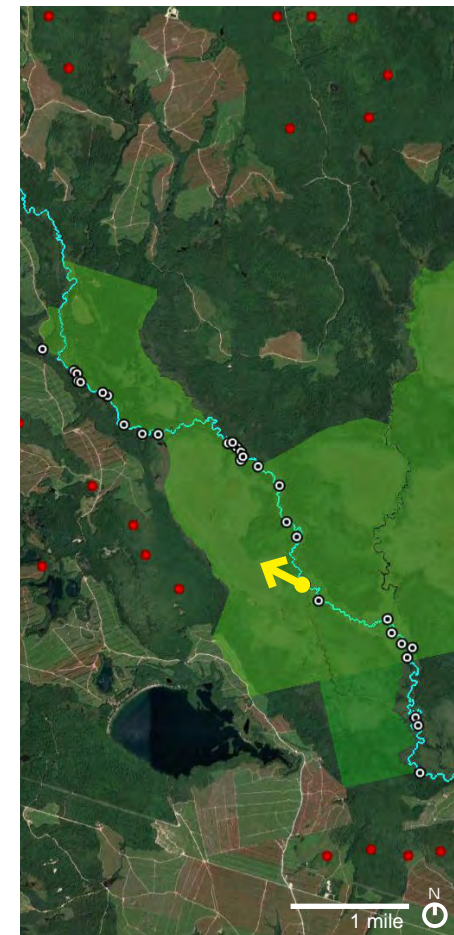
**LOCATION 19 - NW**  
**EXISTING CONDITIONS PHOTOGRAPH**

SITE MAP



**Downeast Wind  
Great Heath / Pleasant River  
Visual Assessment**

**Preliminary Overlays  
Produced in Google Earth**

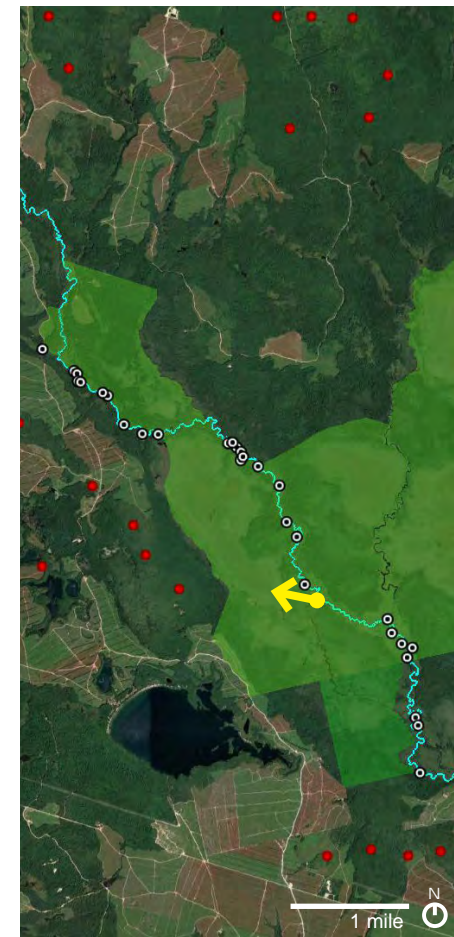


**LOCATION 19 - NW, Project Visibility 1.1 Miles from Viewpoint  
SIMULATION SHOWING PROJECT VISIBILITY**

**SITE MAP**



**Downeast Wind**  
**Great Heath / Pleasant River**  
**Visual Assessment**



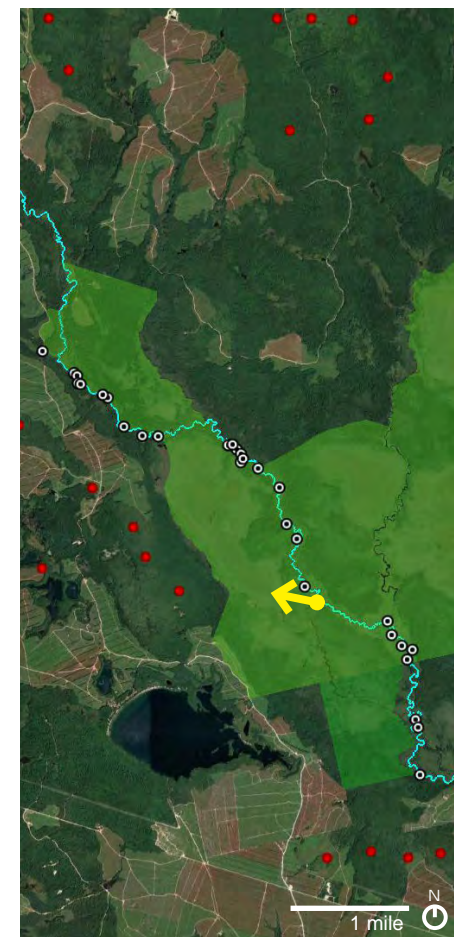
**LOCATION 20 - W-NW**  
**EXISTING CONDITIONS PHOTOGRAPH**

SITE MAP



**Downeast Wind  
Great Heath / Pleasant River  
Visual Assessment**

**Preliminary Overlays  
Produced in Google Earth**

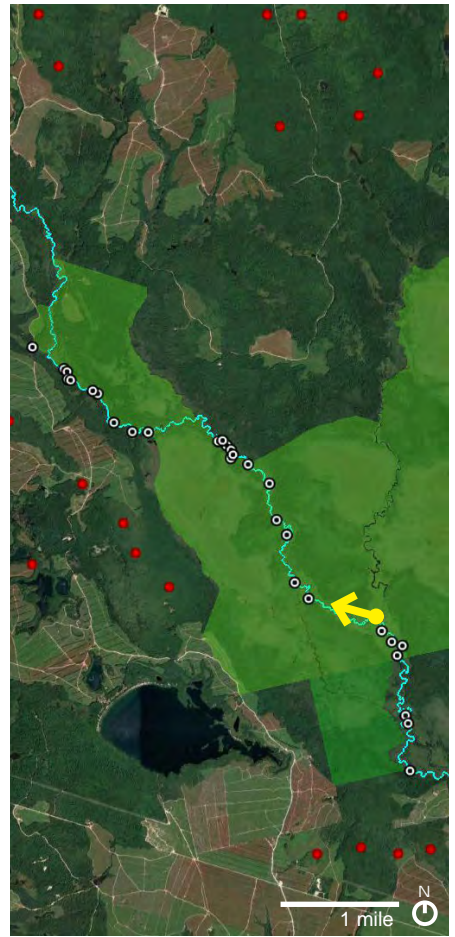


**LOCATION 20 - W-NW, Project Visibility 1.2 Miles from Viewpoint  
SIMULATION SHOWING PROJECT VISIBILITY**

**SITE MAP**



**Downeast Wind**  
**Great Heath / Pleasant River**  
**Visual Assessment**



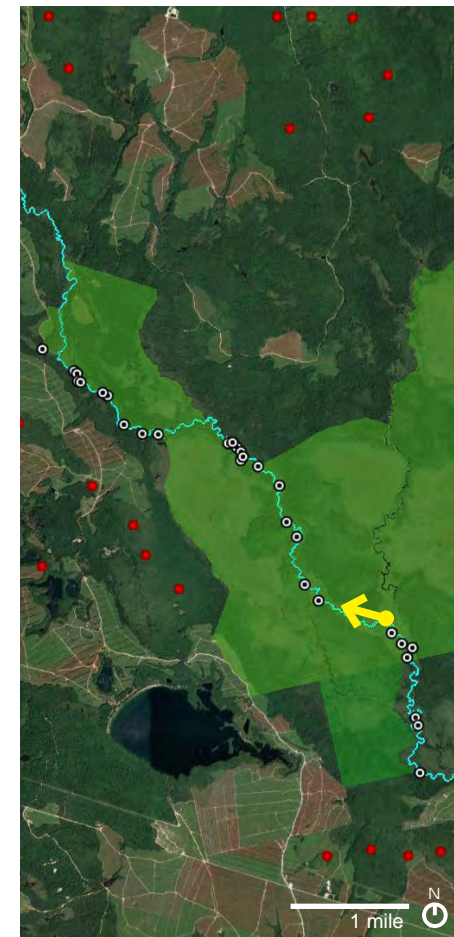
**LOCATION 21 - W-NW**  
**EXISTING CONDITIONS PHOTOGRAPH**

SITE MAP



**Downeast Wind**  
Great Heath / Pleasant River  
Visual Assessment

Preliminary Overlays  
Produced in Google Earth

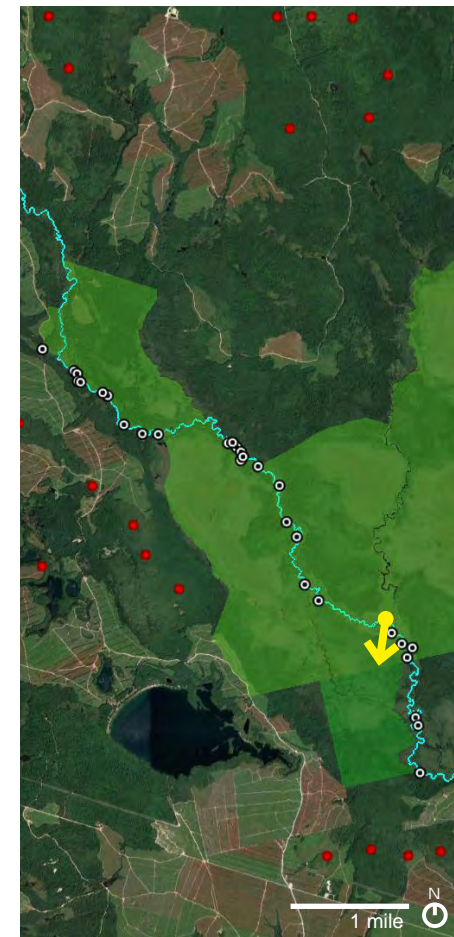


**LOCATION 21 - W-NW, Project Visibility 1.8 Miles from Viewpoint**  
**SIMULATION SHOWING PROJECT VISIBILITY**

SITE MAP



**Downeast Wind**  
**Great Heath / Pleasant River**  
**Visual Assessment**



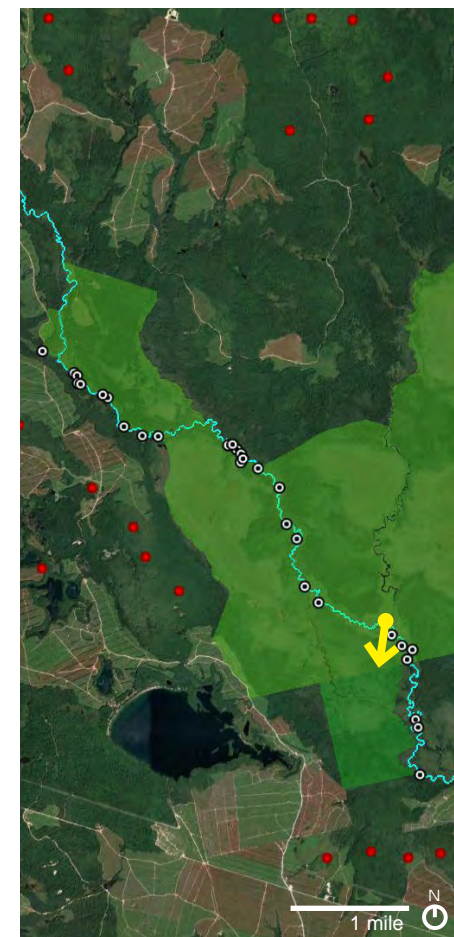
**LOCATION 22 - S**  
**EXISTING CONDITIONS PHOTOGRAPH**

SITE MAP



**Downeast Wind  
Great Heath / Pleasant River  
Visual Assessment**

**Preliminary Overlays  
Produced in Google Earth**

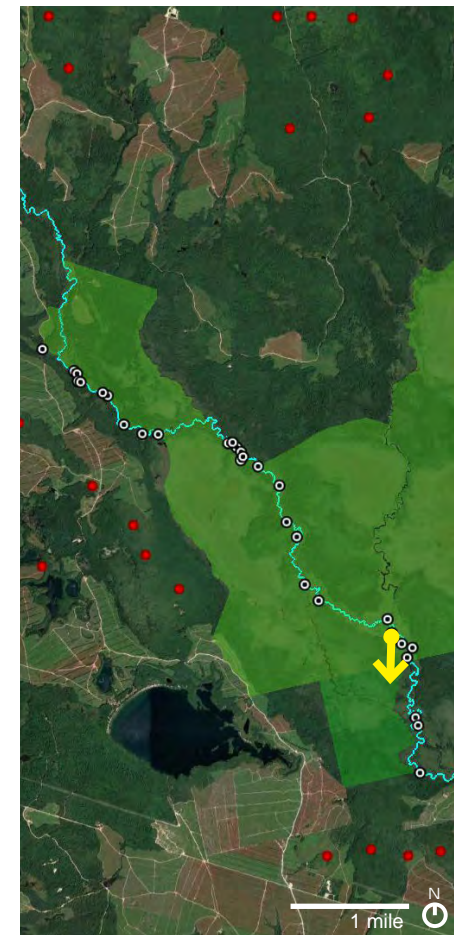


**LOCATION 22 - S, Project Visibility 2 Miles from Viewpoint  
SIMULATION SHOWING PROJECT VISIBILITY**

**SITE MAP**



**Downeast Wind**  
**Great Heath / Pleasant River**  
**Visual Assessment**



**LOCATION 23 - S, No Project Visibility**  
**EXISTING CONDITIONS PHOTOGRAPH**

SITE MAP



# DETERMINATION OF SCENIC QUALITY: State of Maine

## **Scenic Assessment Handbook** State Planning Office Maine Coastal Program





# SCENIC INVENTORY EVALUATION FORM

Location \_\_\_\_\_ Date \_\_\_\_\_

SI	SC	IP	INDICATORS	COMMENTS
<input checked="" type="checkbox"/>	<input checked="" type="checkbox"/>	<input checked="" type="checkbox"/>	1. Landform	
			Elevation	
			Slope	
			2. Open Land	
			3. Shoreline Configuration	
			4. Scenic Features	
<input checked="" type="checkbox"/>	<input checked="" type="checkbox"/>	<input checked="" type="checkbox"/>	5. Scenic Quality of Water	
			Duration of View	
			Type of Water	
			Quality of Horizon	
<input checked="" type="checkbox"/>	<input checked="" type="checkbox"/>		Indicators Present	
<input checked="" type="checkbox"/>		<input checked="" type="checkbox"/>	<b>DESKTOP SUBTOTAL</b>	
<input checked="" type="checkbox"/>	<input checked="" type="checkbox"/>	<input checked="" type="checkbox"/>	6. Landscape Character	
			Land Use	
			Roadside Characteristics	
			Settlement Characteristics	
		<input checked="" type="checkbox"/>	7. Vegetation	
		<input checked="" type="checkbox"/>	8. Composition & Effect	
<input checked="" type="checkbox"/>		<input checked="" type="checkbox"/>	<b>FIELD EVALUATION</b>	
<input checked="" type="checkbox"/>		<input checked="" type="checkbox"/>	<b>TOTAL SCORE</b>	

**SI:** Special Interest  
**SC:** Scoring  
**IP:** Indicators Present

Comments \_\_\_\_\_



Scenic area of local significance

**Local Significance.** Areas that score in the 30's and 40's are generally of local (i.e., town-wide) significance. While these areas may help define the community's characteristic landscape, they are unlikely to attract visitors from outside the immediate locale for their scenic value alone.



Scenic area of regional significance

**Regional Significance.** Areas that achieve scores in the 50's and 60's may be considered of regional (i.e., greater than local) value, but usually are not considered of state-wide significance for their scenic character alone. Individual sites with scores in the upper range may warrant further consideration.



Scenic area of state or national significance

**Statewide or National Significance.** Places that achieve scores of 70 or greater have scenery that may be considered of state-wide or national significance. These tend to be areas with exemplary combinations of landform, water bodies, vegetation, and cultural characteristics.



# SCENIC INVENTORY EVALUATION FORM

Location GREAT HEATH Date \_\_\_\_\_

SI	SC	IP	INDICATORS	COMMENTS
			1. Landform	
	0		Elevation	No appreciable topography.
	0		Slope	Basically flat landscape.
	6		2. Open Land	> 5 ac with unobstructed views.
	0		3. Shoreline Configuration	No shoreline, no configuration.
	3		4. Scenic Features	GH as a feature within foreground.
<input type="checkbox"/>			5. Scenic Quality of Water	
	6		Duration of View	Numerous short views from the Pleasant River.
	6		Type of Water	Small waterbody (Pleasant River).
	3		Quality of Horizon	Closed horizon with little vertical interest.
	<input type="checkbox"/>		Indicators Present	
	24	<input type="checkbox"/>	<b>DESKTOP SUBTOTAL</b>	

<input type="checkbox"/>	<input type="checkbox"/>		6. Landscape Character	
	3		Land Use	Blueberry harvesting has minimal effect on scenic quality
	0		Roadside Characteristics	Roadsides have no effect on scenic quality
	3		Settlement Characteristics	Settlement characteristics have minimal effect on scenic quality.
	6		7. Vegetation	Vegetation has a positive effect on scenic quality.
	6	<input type="checkbox"/>	8. Composition & Effect	Landscape composition is generally positive.
	18		<b>FIELD EVALUATION</b>	

	42	<input type="checkbox"/>	<b>TOTAL SCORE</b>	
--	----	--------------------------	--------------------	--





# Comparison with other Palmer Reviews: Bowers

Scenic Resources of State or National Significance	Scenic Impact Evaluation Criteria							Overall Scenic Impact
	A	B	C	D	E.1	E.2	F	
<b>Great Ponds</b>								
Bottle Lake	Low	Medium	Medium	Low	Med-High	Medium	Low	Medium
Duck Lake	Low	Medium	Medium	Low	Medium	Medium	Medium	Medium
Horseshoe Lake	Low	Medium	Medium	Low	Medium	None	None	None
Junior Lake	Low-Med	Medium	Med-High	Low	Medium	Medium	Medium	Medium
Keg Lake	Low	Medium	Medium	Low	Medium	Medium	Low-Med.	Medium
Lombard Lake	Low-Med	Medium	Medium	Low	Medium	None	None	None
Norway Lake	Low-Med	Medium	Medium	Low	Medium	None	None	None
Pleasant Lake	Low-Med	Medium	Med-High	Low	Medium	Medium	High-Med.	Medium
Pug Lake/Junior Bay	Medium	Medium	Medium	Low	Medium	Low	Low	Low +
Scraggly Lake	Low-Med	Medium	Med-High	Low	Medium	Medium	Medium	Medium
Shaw Lake	Low-Med	Medium	Medium	Low	Medium	Medium	Medium	Medium
Sysladobsis Lake	Low-Med	Medium	Medium	Low	Medium	Medium	Low-Med.	Medium
Upper Sysladobsis Lake	Low-Med	Medium	Medium	Low	Medium	None	None	None
West Musquash Lake	Low-Med	Medium	Medium	Low	Medium	None	None	None

**Notes:** The Evaluation Criteria are: (A) Significance of resource, (B) Character of surrounding area, (C) Typical viewer expectation, (D) Development's purpose and context, (E.1) Extent, nature and duration of uses, (E.2) Effect on continued use and enjoyment, and (F) Scope and scale of project views.

5 All lakes/ponds are rated as either Significant or Outstanding in the Maine Wildland Lakes Assessment. Rating of Medium-High for scenic value of Great Heath (A) and High for character of surrounding area (B) is inconsistent with previous reviews under the Wind Energy Act.



## D. EXPECTATIONS of the TYPICAL VIEWER: Ch. 382.3(D)

### 1) HIGH: At SRSNSs valued for its setting in a naturally scenic landscape.

There is no indication – other than two respondents to the intercept survey – that the Great Heath is valued for its setting.





## D. EXPECTATIONS of the TYPICAL VIEWER: Ch. 382.3(D)

**2) LOW: At SRSNSs which qualify for reasons not primarily related to scenic quality.** This is the appropriate metric to use in determining Viewer Expectation. Similar to many of the National Natural Landmarks (e.g., the Black Gum Swamp in New Gloucester).





## E. EXTENT, NATURE & DURATION OF PUBLIC USES: Ch. 382.3(E)

**Extent:** Very limited (31 4-hour observations from August to November 2016)

Minimal signs of human activity on river or at campsite

No signage, parking areas, trail markers, or trails

**Nature:** Hunting, fishing, paddling through the Great Heath

**Duration:** Difficult to establish due to low use

No trails within the heath itself

AMC River Guide: Navigable: High water: Early May. *Pleasant River meanders for 14.0 miles through the heath, following such a convoluted route that it requires almost a full day of paddling. (This great heath is one of the longest peat wetlands of its type in the northeastern United States.)*



**PASSAMAQUODDY  
WILD BLUEBERRY CO.  
NO TRESPASSING  
ACCESS BY PERMIT ONLY  
207-483-4501**

