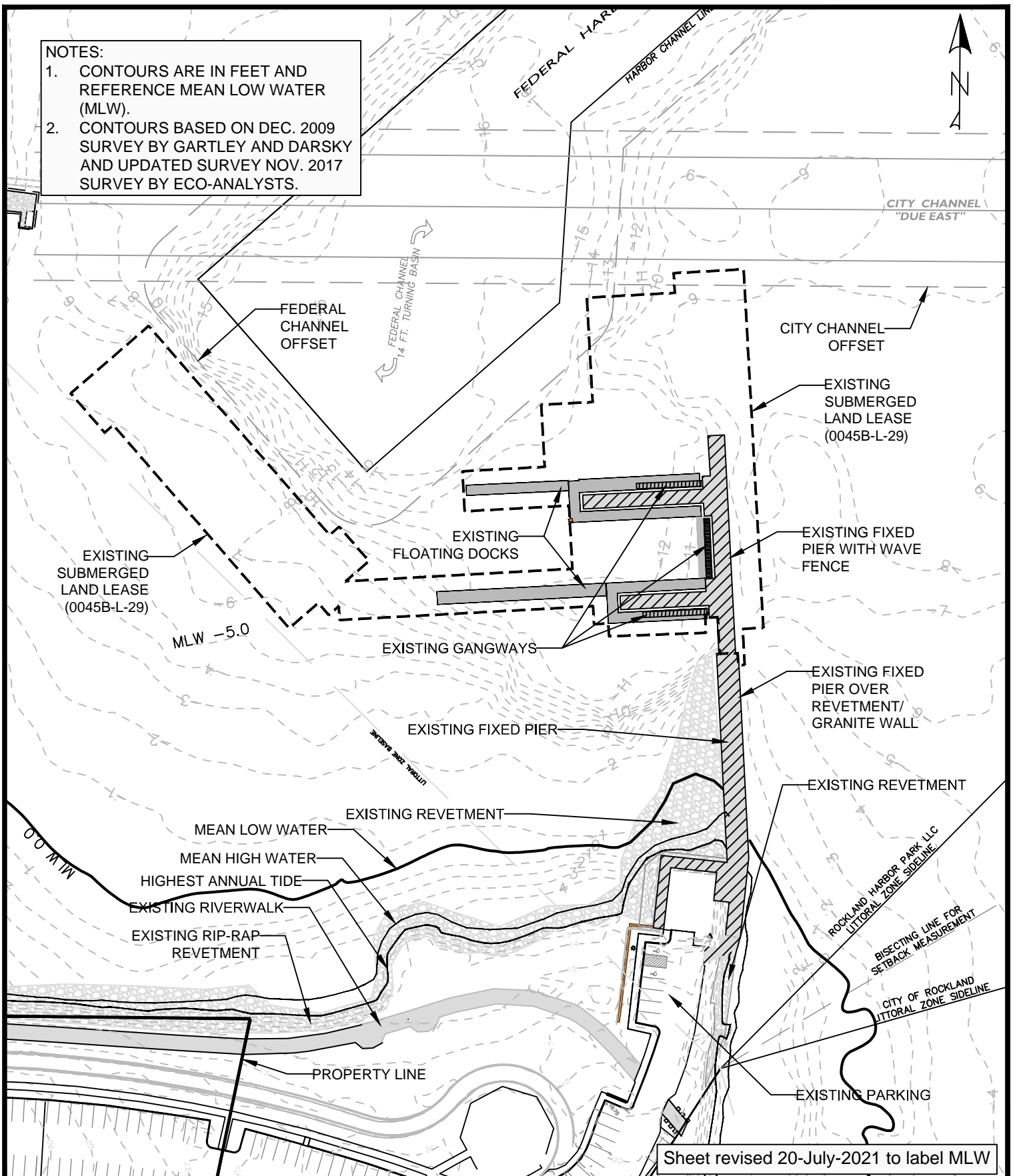


NOTES:

1. CONTOURS ARE IN FEET AND REFERENCE MEAN LOW WATER (MLW).
2. CONTOURS BASED ON DEC. 2009 SURVEY BY GARTLEY AND DASKY AND UPDATED SURVEY NOV. 2017 SURVEY BY ECO-ANALYSTS.



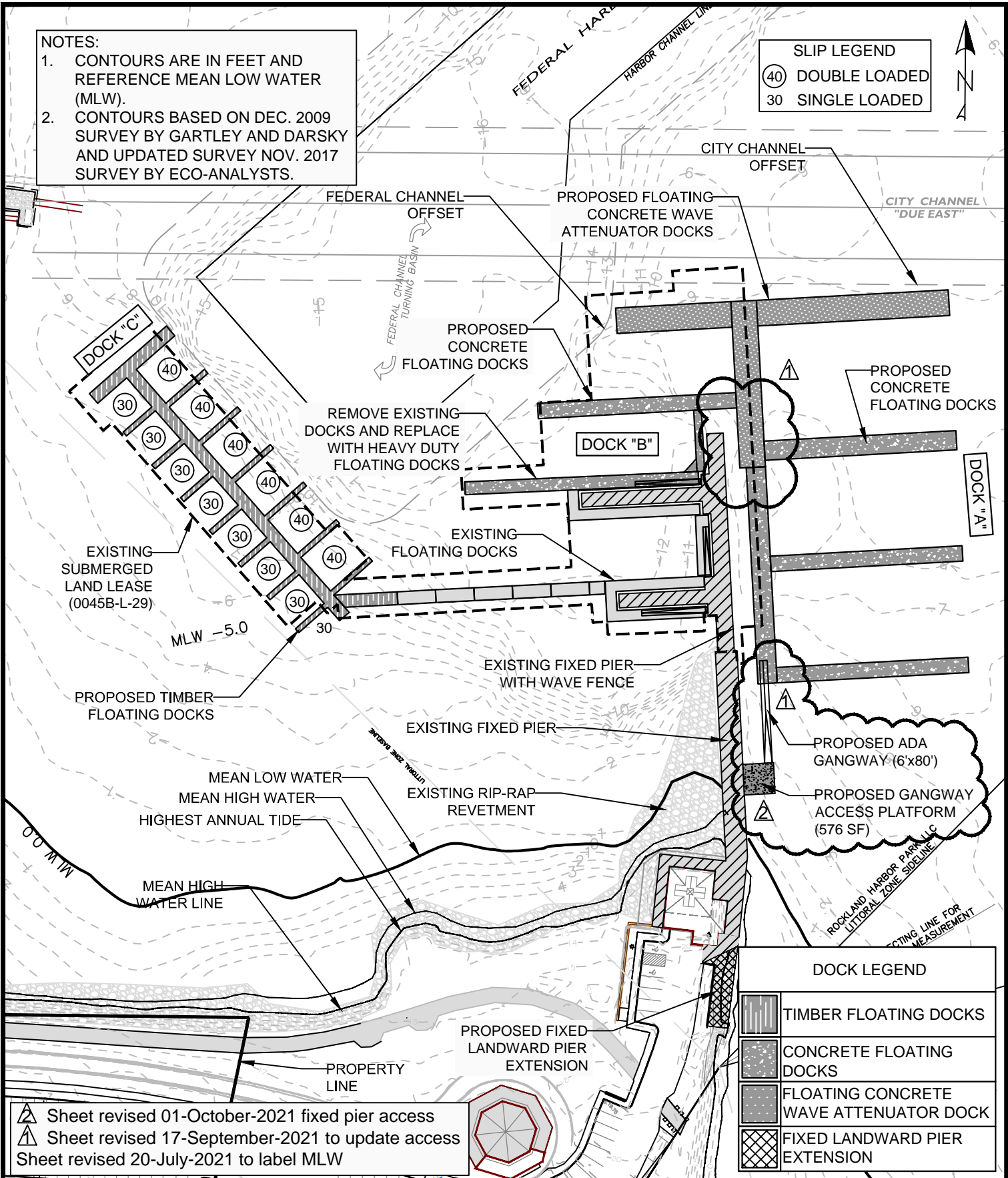
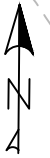
**SH ROCKLAND - NRPA APPLICATION
EXISTING CONDITIONS PLAN
ROCKLAND, MAINE**

SCALE: 1"=100'

JUNE 2021

NOTES:
 1. CONTOURS ARE IN FEET AND REFERENCE MEAN LOW WATER (MLW).
 2. CONTOURS BASED ON DEC. 2009 SURVEY BY GARTLEY AND DASKY AND UPDATED SURVEY NOV. 2017 SURVEY BY ECO-ANALYSTS.

SLIP LEGEND
 (40) DOUBLE LOADED
 30 SINGLE LOADED



DOCK LEGEND	
	TIMBER FLOATING DOCKS
	CONCRETE FLOATING DOCKS
	FLOATING CONCRETE WAVE ATTENUATOR DOCK
	FIXED LANDWARD PIER EXTENSION

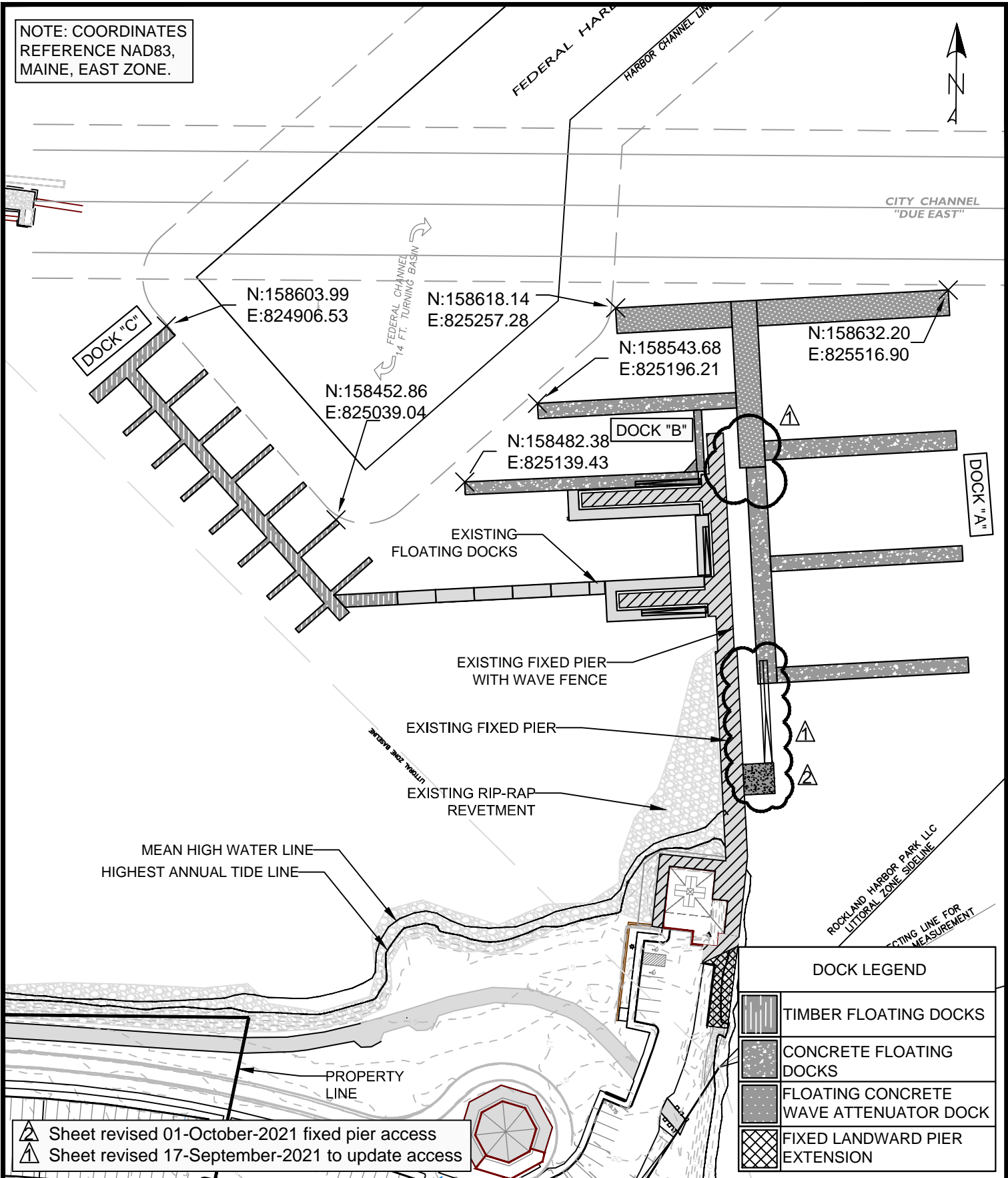
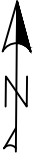
Sheet revised 01-October-2021 fixed pier access
 Sheet revised 17-September-2021 to update access
 Sheet revised 20-July-2021 to label MLW

LANDMARK CORPORATION
 SURVEYORS & ENGINEERS
 135 Rockland STREET ROCKPORT, MAINE 04856 PHONE: (207) 236-6757 WWW.LANDMARKMAINE.COM

SH ROCKLAND - NRPA APPLICATION
PROPOSED IMPROVEMENTS OVERVIEW
ROCKLAND, MAINE

SCALE: 1"=100' JUNE 2021

NOTE: COORDINATES
REFERENCE NAD83,
MAINE, EAST ZONE.



Sheet revised 01-October-2021 fixed pier access
 Sheet revised 17-September-2021 to update access

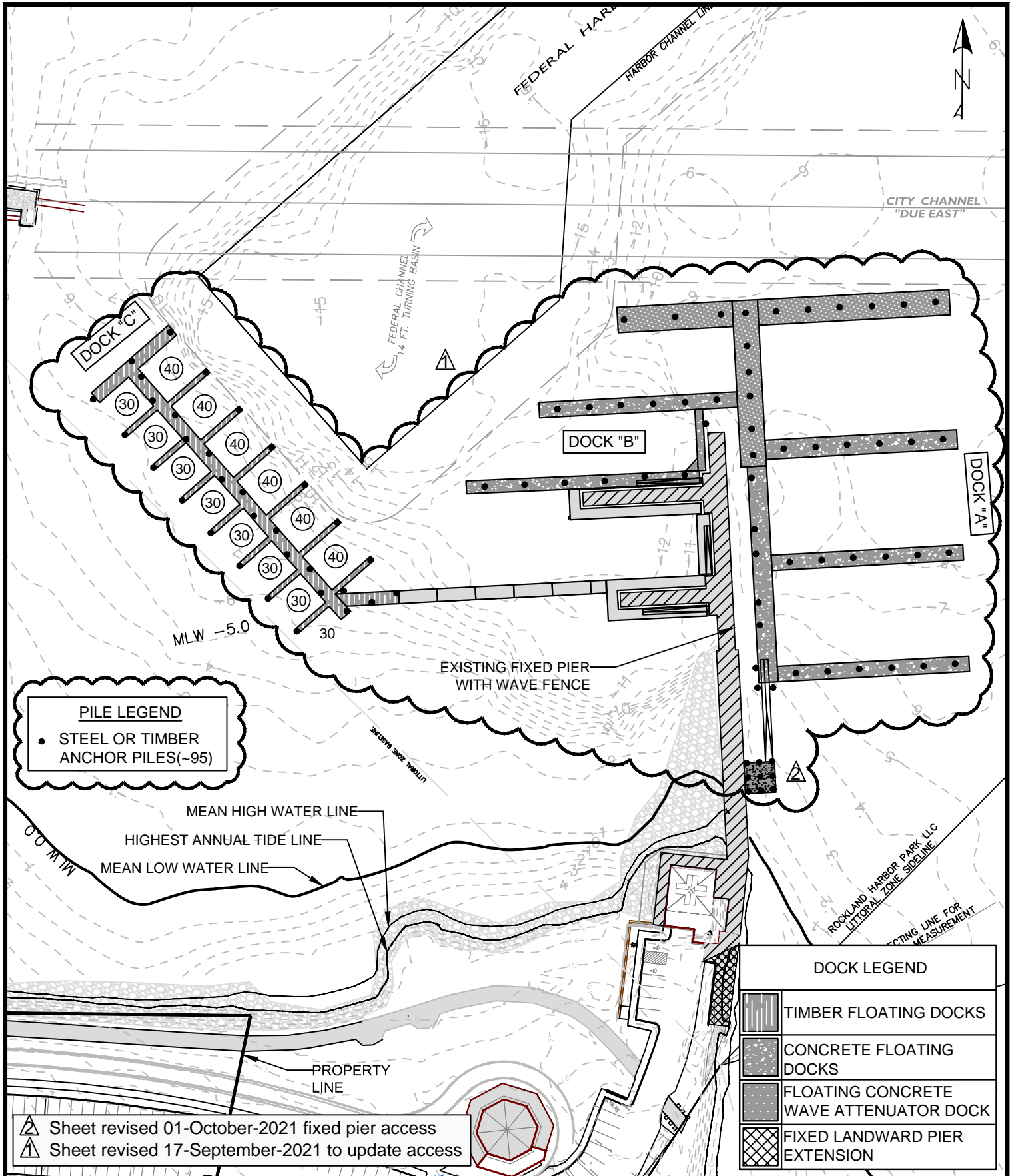


135 Rockland STREET ROCKPORT, MAINE 04856 PHONE: (207) 236-6757 WWW.LANDMARKMAINE.COM

**SH ROCKLAND - NRPA APPLICATION
PROPOSED DOCK COORDINATES
ROCKLAND, MAINE**

SCALE: 1"=100'

JUNE 2021



PILE LEGEND

- STEEL OR TIMBER ANCHOR PILES (~95)

MEAN HIGH WATER LINE
 HIGHEST ANNUAL TIDE LINE
 MEAN LOW WATER LINE

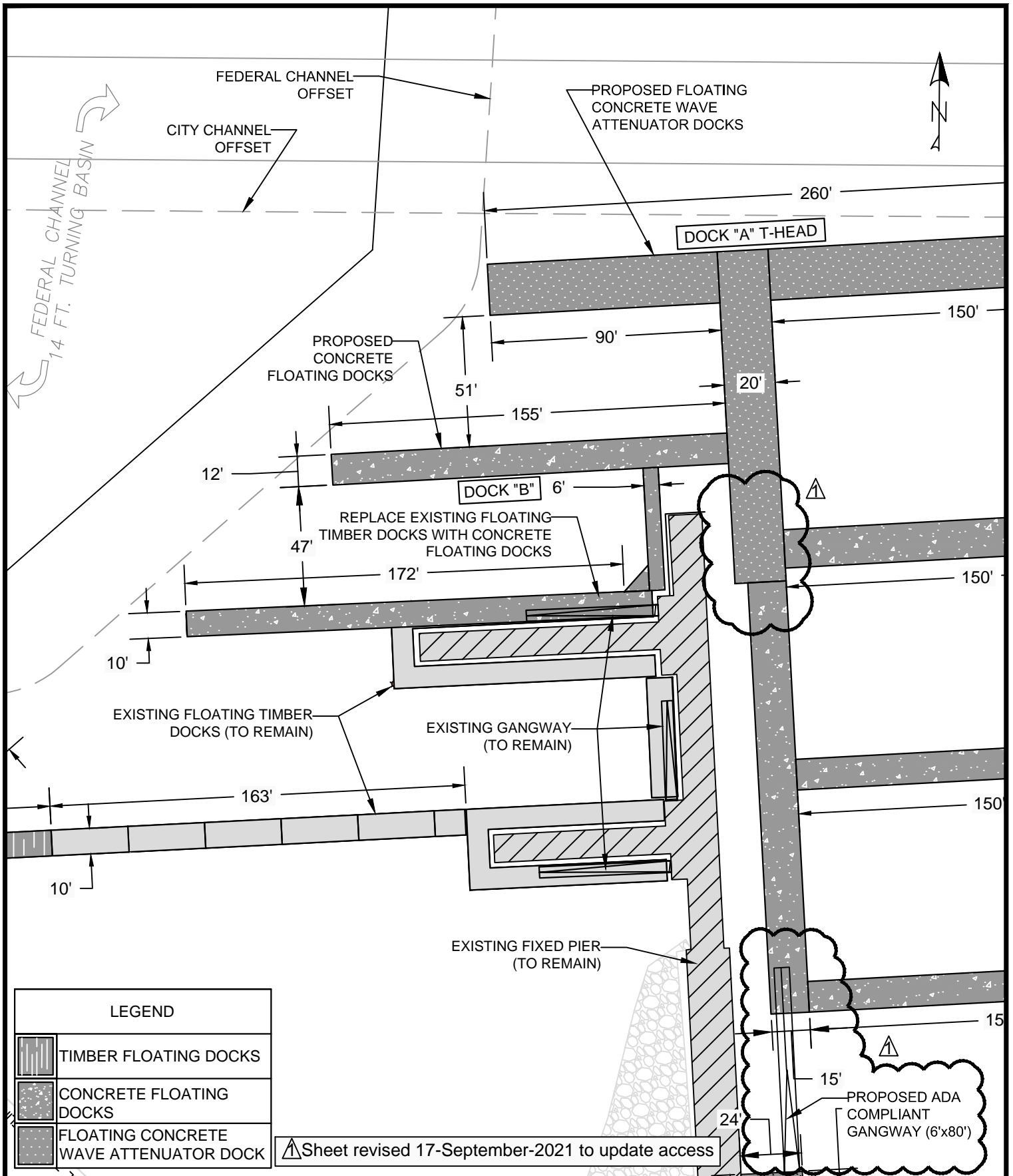
DOCK LEGEND	
	TIMBER FLOATING DOCKS
	CONCRETE FLOATING DOCKS
	FIXED LANDWARD PIER EXTENSION
	floating concrete wave attenuator dock

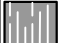

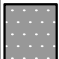
▲ Sheet revised 01-October-2021 fixed pier access
 ▲ Sheet revised 17-September-2021 to update access

LANDMARK CORPORATION
 SURVEYORS & ENGINEERS
 135 Rockland STREET ROCKPORT, MAINE 04856 PHONE: (207) 236-6757 WWW.LANDMARKMAINE.COM

SH ROCKLAND - NRPA APPLICATION
APPROXIMATE ANCHOR PILE PLAN
ROCKLAND, MAINE

SCALE: 1"=100' JUNE 2021



LEGEND	
	TIMBER FLOATING DOCKS
	CONCRETE FLOATING DOCKS
	FLOATING CONCRETE WAVE ATTENUATOR DOCK

▲ Sheet revised 17-September-2021 to update access



LANDMARK CORPORATION

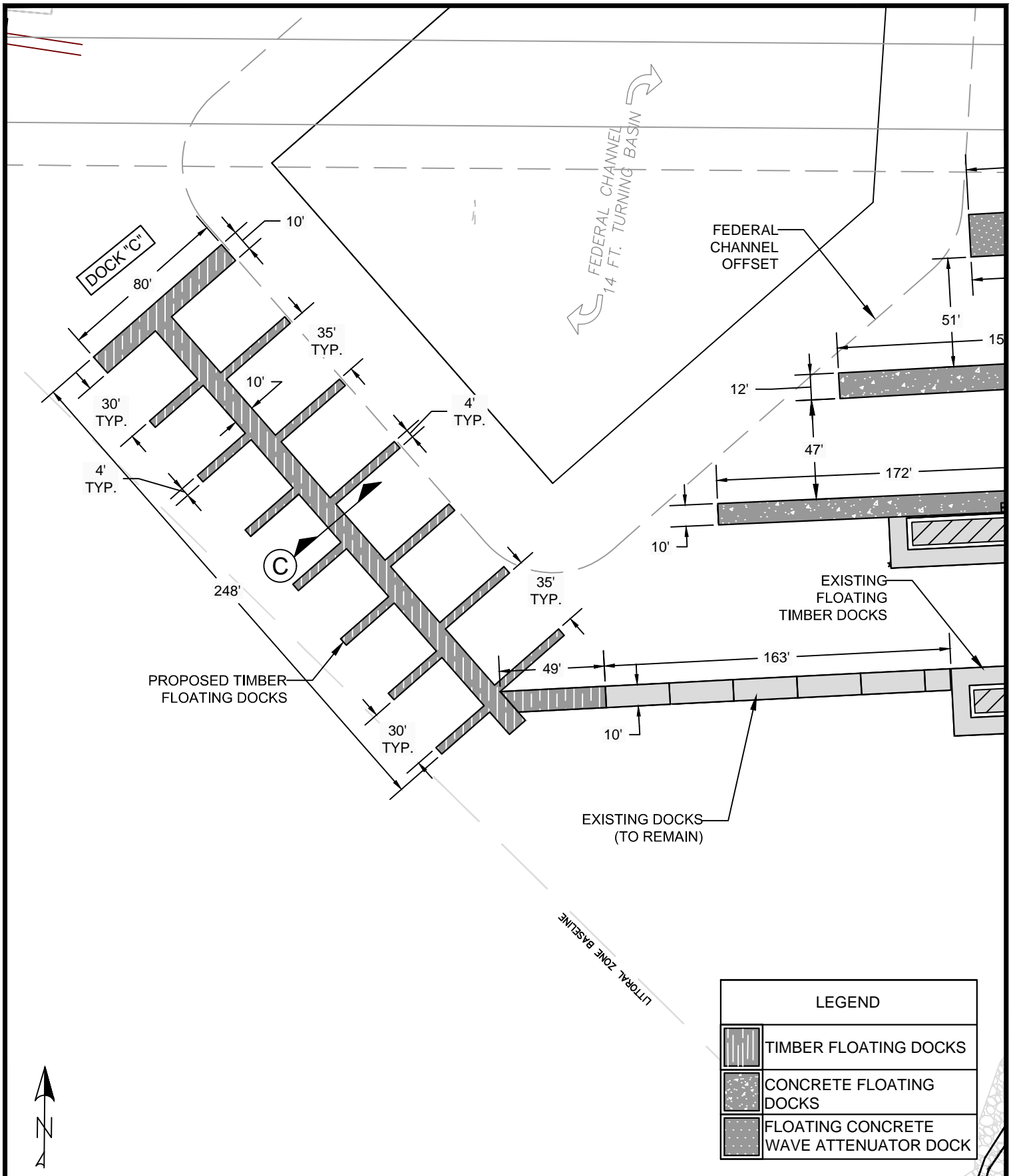
SURVEYORS & ENGINEERS

135 Rockland STREET ROCKPORT, MAINE 04856 PHONE: (207) 236-6757 WWW.LANDMARKMAINE.COM

**SH ROCKLAND - NRPA APPLICATION
DOCK B DIMENSION PLAN
ROCKLAND, MAINE**

SCALE: 1"=60'

JUNE 2021

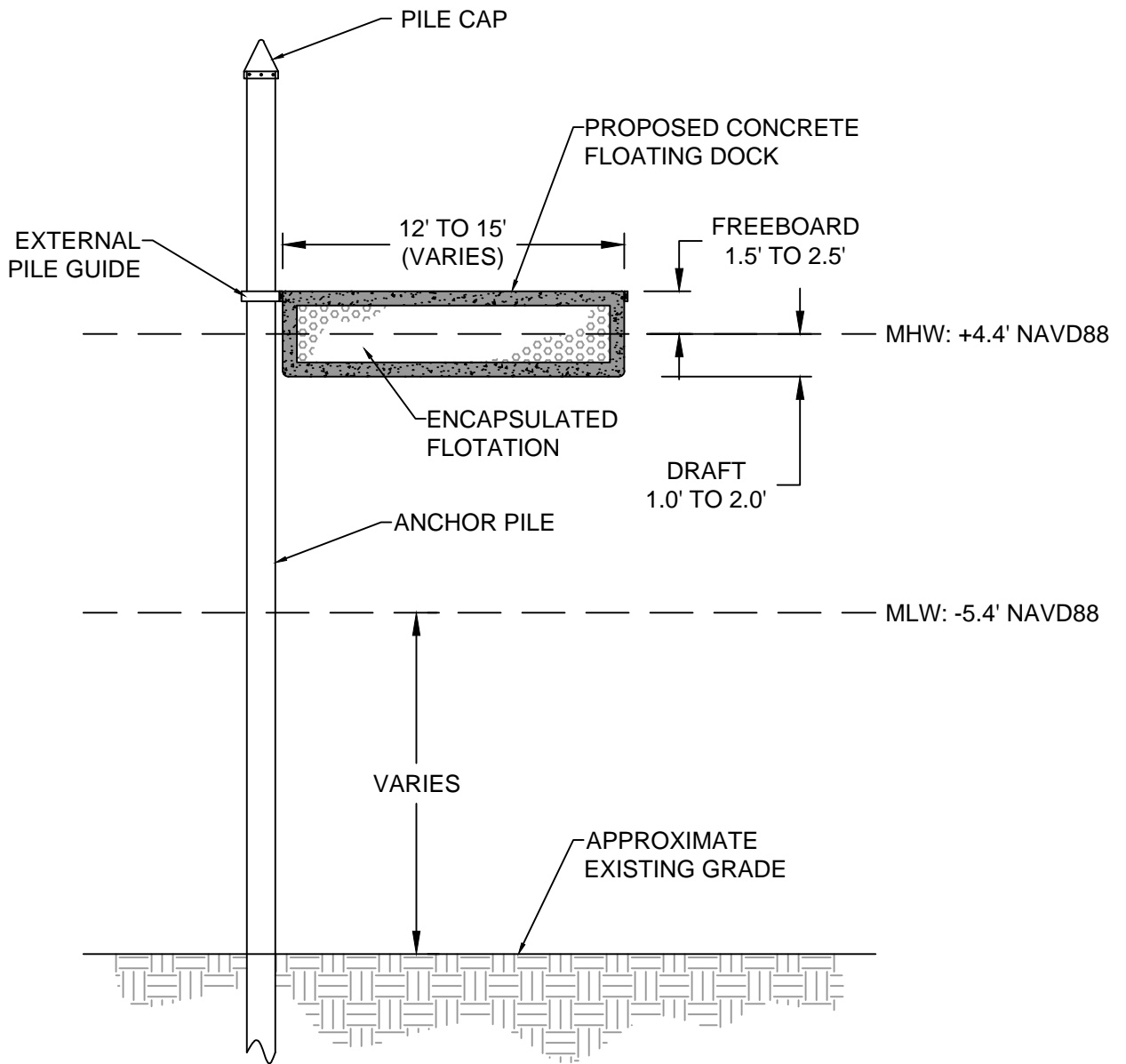


LANDMARK CORPORATION
 SURVEYORS & ENGINEERS
 135 Rockland STREET ROCKPORT, MAINE 04856 PHONE: (207) 236-6757 WWW.LANDMARKMAINE.COM

**SH ROCKLAND - NRPA APPLICATION
 DOCK C DIMENSION PLAN
 ROCKLAND, MAINE**

SCALE: 1"=60'

JUNE 2021



(A) TYPICAL CONCRETE FLOATING DOCK SECTION



LANDMARK CORPORATION

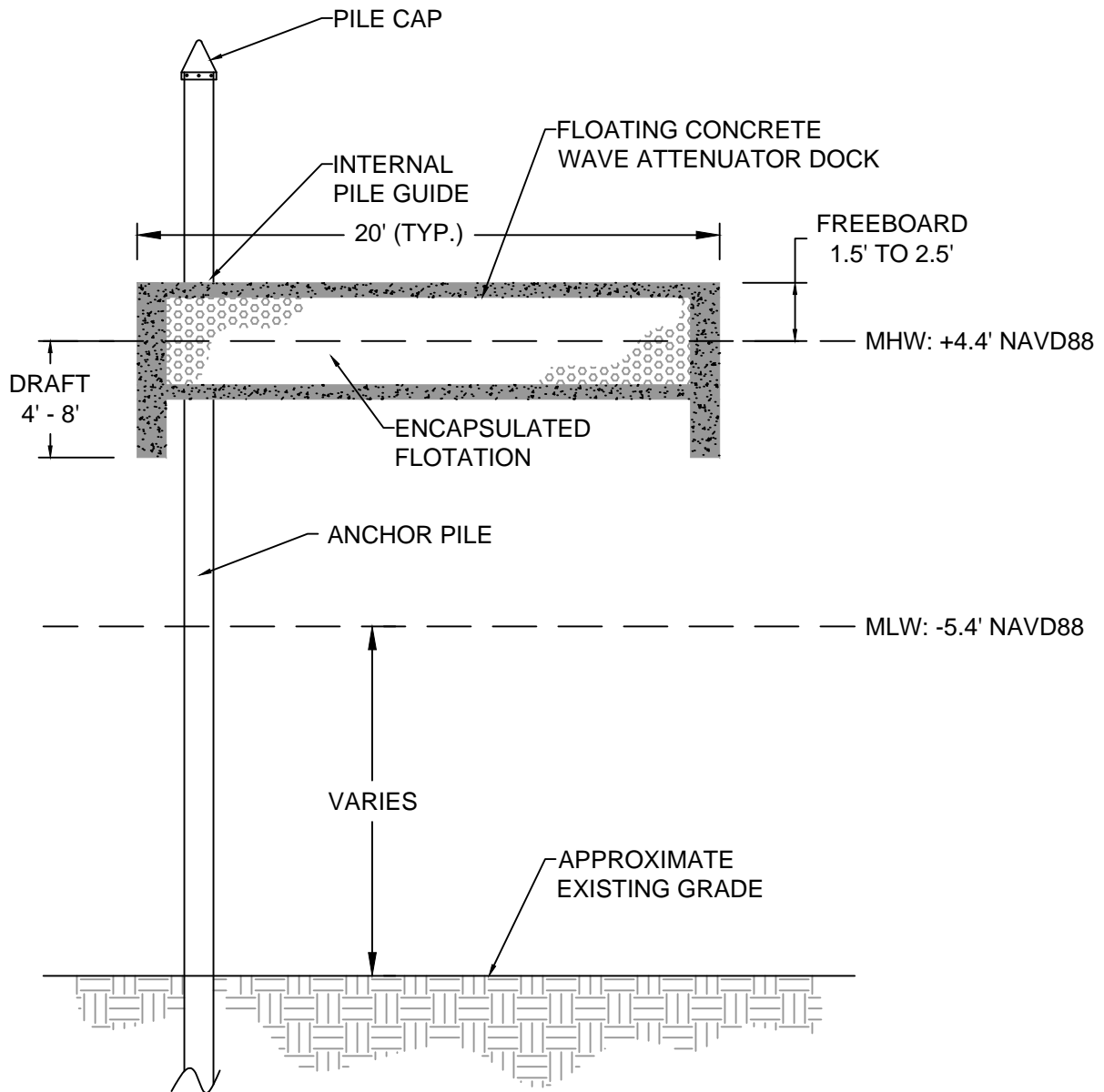
SURVEYORS & ENGINEERS

135 Rockland STREET ROCKPORT, MAINE 04856 PHONE: (207) 236-6757 WWW.LANDMARKMAINE.COM

SH ROCKLAND - NRPA APPLICATION
TYPICAL CONCRETE FLOATING DOCK DETAILS
ROCKLAND, MAINE

SCALE: 1"=6'

JUNE 2021



(B) TYPICAL FLOATING CONCRETE WAVE ATTENUATOR DOCK SECTION



LANDMARK CORPORATION

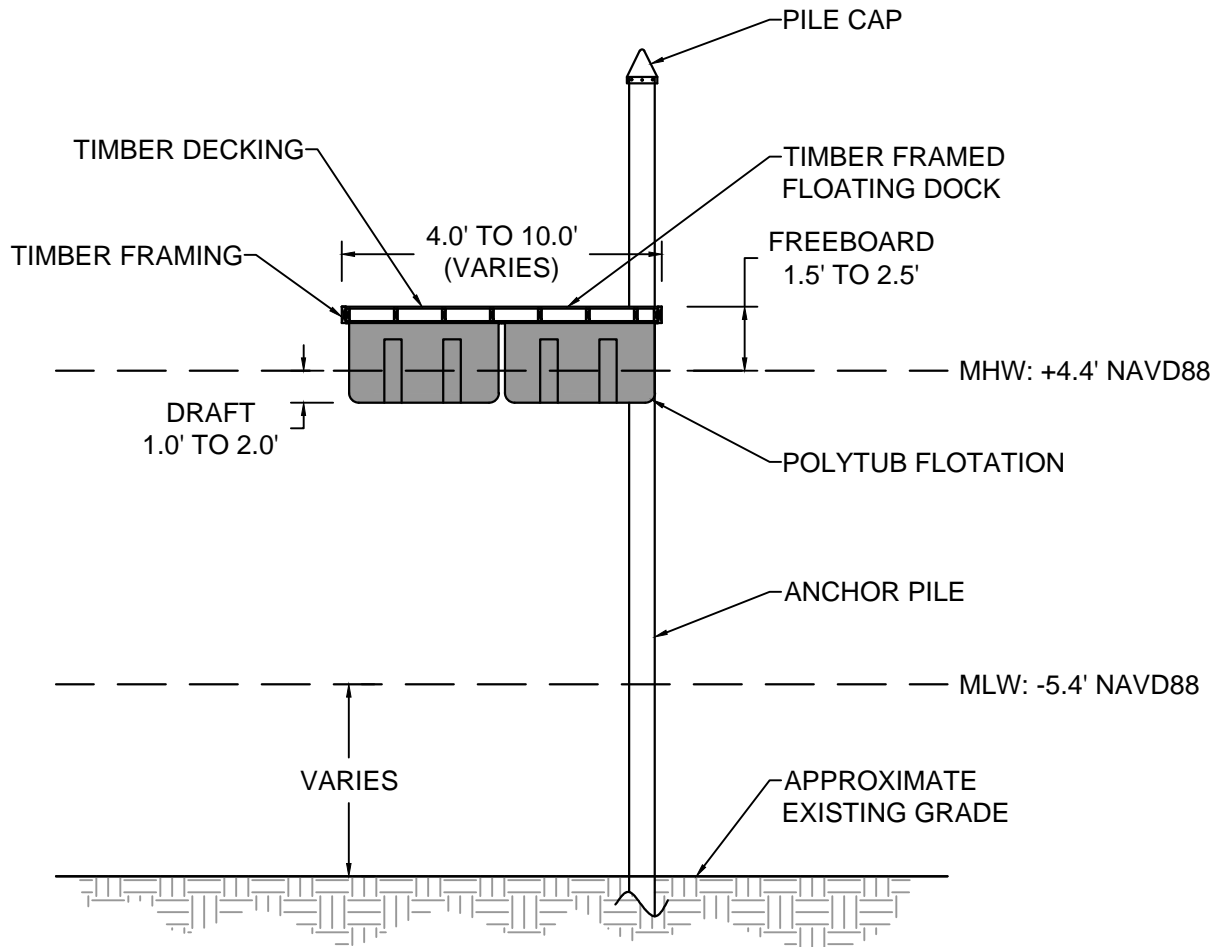
SURVEYORS & ENGINEERS

135 Rockland STREET ROCKPORT, MAINE 04856 PHONE: (207) 236-6757 WWW.LANDMARKMAINE.COM

SH ROCKLAND - NRPA APPLICATION
TYPICAL FLOATING CONCRETE WAVE ATTENUATOR
ROCKLAND, MAINE

SCALE: 1"=6'

JUNE 2021



© TYPICAL TIMBER FLOATING DOCK SECTION



LANDMARK CORPORATION

SURVEYORS & ENGINEERS

135 Rockland STREET ROCKPORT, MAINE 04856 PHONE: (207) 236-6757 WWW.LANDMARKMAINE.COM

SH ROCKLAND - NRPA APPLICATION
TYPICAL TIMBER FLOATING DOCK DETAIL
ROCKLAND, MAINE

SCALE: 1"=6'

JUNE 2021

EXISTING FIXED PIER

24'

RAILING

PROPOSED GANGWAY
PLATFORM SUPERSTRUCTURE

MHW: +4.4' NAVD88

CROSS BRACING

EXISTING PIER/
ROCK QUAY WALL

MLW: -5.4' NAVD88

VARIES

APPROXIMATE
EXISTING GRADE

D TYPICAL GANGWAY ACCESS
PLATFORM SECTION

PROPOSED
RAILING

24'

PROPOSED GANGWAY
ACCESS PLATFORM

EXISTING RAILING

MHW

PROPOSED
SUPPORT PILES
(9 TOTAL)

PROPOSED
ADA
COMPLIANT
GANGWAY

CROSS
BRACING

EXISTING ROCK
QUAY WALL

MLW

APPROXIMATE
EXISTING GRADE

E TYPICAL GANGWAY ACCESS
PLATFORM SECTION

Sheet revised 17-September-2021 to update access



LANDMARK CORPORATION

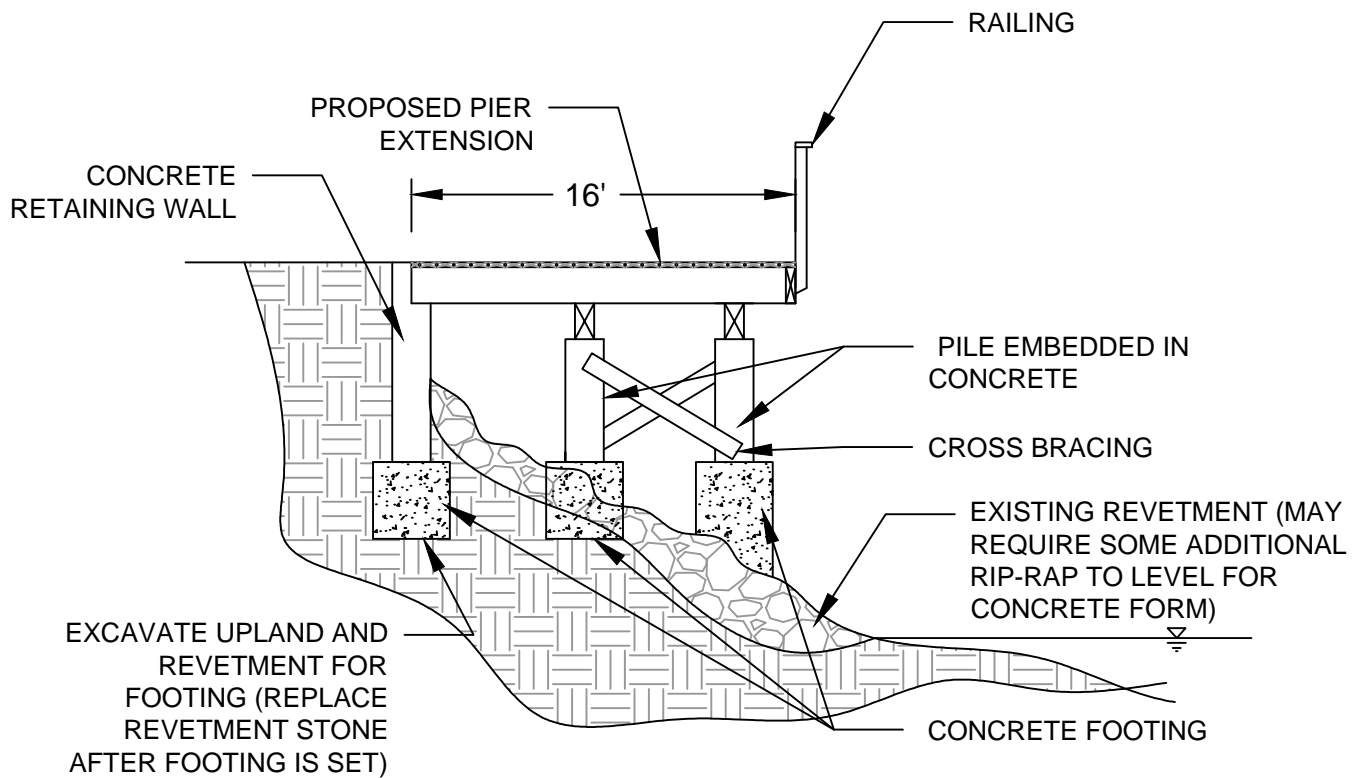
SURVEYORS & ENGINEERS

135 Rockland STREET ROCKPORT, MAINE 04856 PHONE: (207) 236-6757 WWW.LANDMARKMAINE.COM

SH ROCKLAND - NRPA APPLICATION
TYPICAL GANGWAY ACCESS PLATFORM DETAILS
ROCKLAND, MAINE

SCALE: NTS

JUNE 2021



(F) TYPICAL LANDWARD FIXED PIER EXTENSION SECTION



LANDMARK CORPORATION

SURVEYORS & ENGINEERS

135 Rockland STREET ROCKPORT, MAINE 04856 PHONE: (207) 236-6757 WWW.LANDMARKMAINE.COM

SH ROCKLAND - NRPA APPLICATION
TYPICAL LANDWARD PIER EXTENSION SECTION
ROCKLAND, MAINE

SCALE: NTS

JUNE 2021

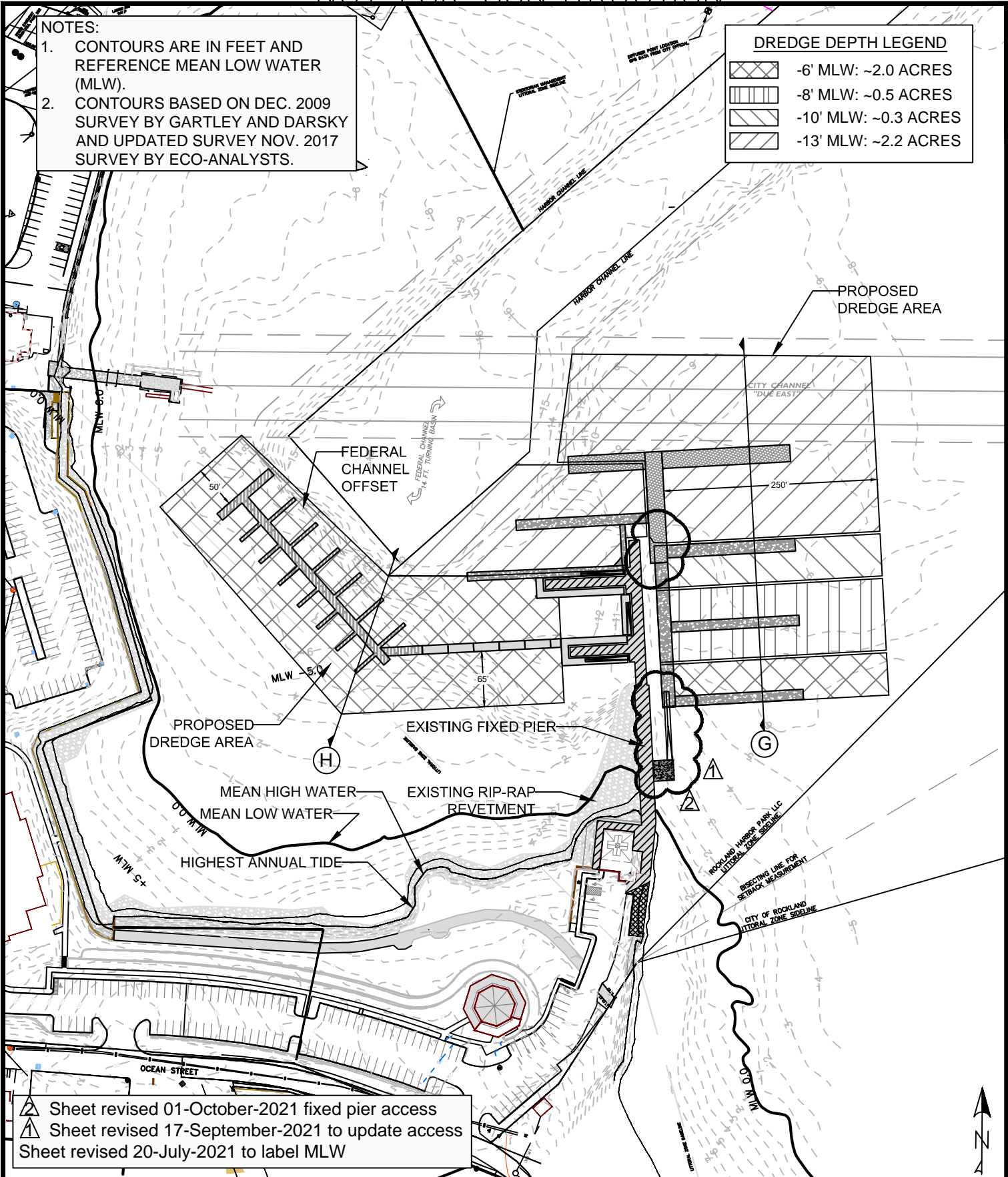
FOR PERMITTING PURPOSES ONLY
 "NOT FOR CONSTRUCTION"

NOTES:

1. CONTOURS ARE IN FEET AND REFERENCE MEAN LOW WATER (MLW).
2. CONTOURS BASED ON DEC. 2009 SURVEY BY GARTLEY AND DARSKY AND UPDATED SURVEY NOV. 2017 SURVEY BY ECO-ANALYSTS.

DREDGE DEPTH LEGEND

	-6' MLW: ~2.0 ACRES
	-8' MLW: ~0.5 ACRES
	-10' MLW: ~0.3 ACRES
	-13' MLW: ~2.2 ACRES



Sheet revised 01-October-2021 fixed pier access
 Sheet revised 17-September-2021 to update access
 Sheet revised 20-July-2021 to label MLW

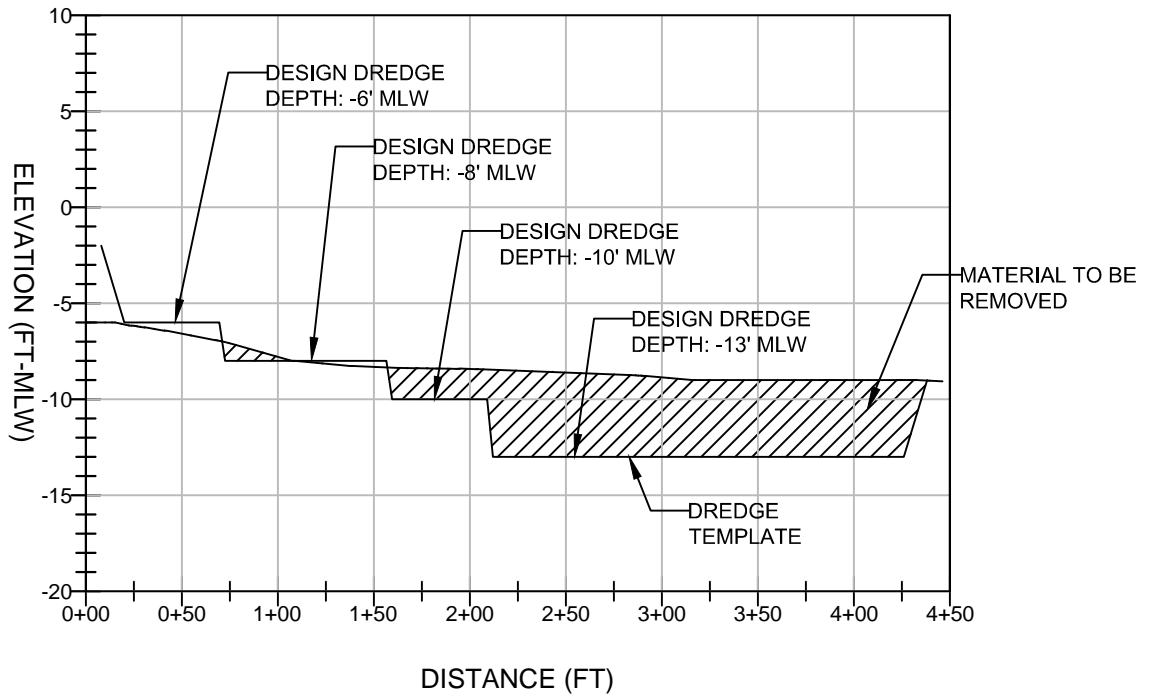


135 Rockland Street Rockport, Maine 04856 Phone: (207) 236-6757 www.landmarkmaine.com

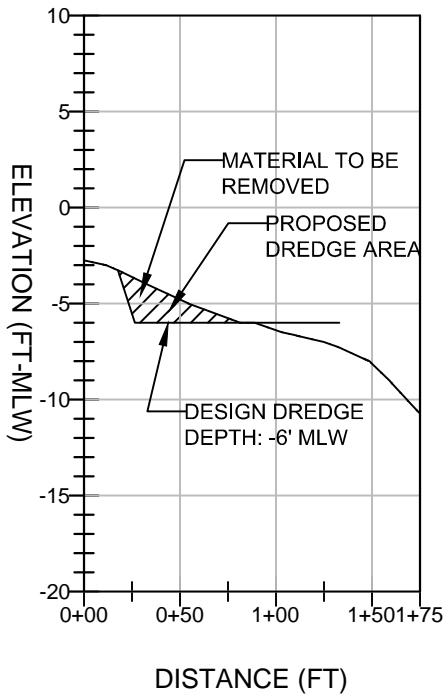
SH ROCKLAND - NRPA APPLICATION
 PROPOSED DREDGE PLAN
 ROCKLAND, MAINE

SCALE: 1"=150'

JUNE 2021



Ⓒ TYPICAL DREDGE PROFILE



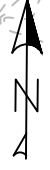
Ⓓ TYPICAL DREDGE PROFILE

- NOTES:
1. PROFILES ARE IN FEET AND REFERENCE MEAN LOW WATER (MLW).
 2. PROFILES BASED ON DEC. 2009 SURVEY BY GARTLEY AND DASKY AND UPDATED SURVEY NOV. 2017 SURVEY BY ECO-ANALYSTS.

FOR PERMITTING PURPOSES ONLY
 "NOT FOR CONSTRUCTION"

NOTES:

1. CONTOURS ARE IN FEET AND REFERENCE MEAN LOW WATER (MLW).
2. CONTOURS BASED ON DEC. 2009 SURVEY BY GARTLEY AND DASKY AND UPDATED SURVEY NOV. 2017 SURVEY BY ECO-ANALYSTS.
3. PROPOSED DREDGE CONTOURS, VOLUMES, AND AREAS ARE BASED ON CONDITIONS AT TIME OF SURVEY AND MAY VARY AT TIME OF CONSTRUCTION.



TURBIDITY CURTAIN, IF NECESSARY (LOCATION IS INDICATIVE AND SHALL BE DEPLOYED AROUND THE CURRENT AREA OF DREDGING DURING CONSTRUCTION)

FEDERAL CHANNEL OFFSET

PROPOSED -13' MLW DREDGE AREA (91,975 SF - ~11,055 CY)

PROPOSED -6' MLW DREDGE AREA (17,550 SF - ~450 CY)

EXISTING FIXED PIER

PROPOSED -10' MLW DREDGE AREA (13,120 SF - ~720 CY)

PROPOSED CONTOURS MEAN HIGH WATER

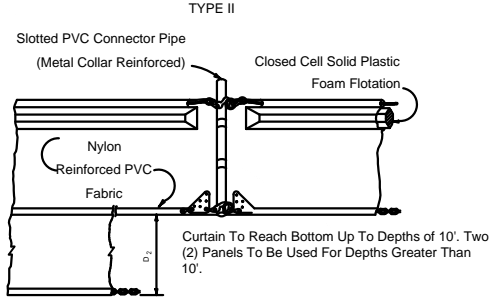
EXISTING RIP-RAP REVETMENT

PROPOSED -8' MLW DREDGE AREA (9,540 SF - ~200 CY)

MEAN LOW WATER HIGHEST ANNUAL TIDE

PROPOSED -6' MLW DREDGE AREA (5,750 SF - ~90 CY)

Sheet revised 20-July-2021 to label MLW



FLOATING TURBIDITY BARRIERS



135 Rockland Street Rockport, Maine 04856 Phone: (207) 236-6757 www.landmarkmaine.com

SH ROCKLAND - NRPA APPLICATION
 TURBIDITY CONTROL NOTES AND DETAILS
 ROCKLAND, MAINE

SCALE: 1"=150'

JUNE 2021