

Chapter 200 rules revisited

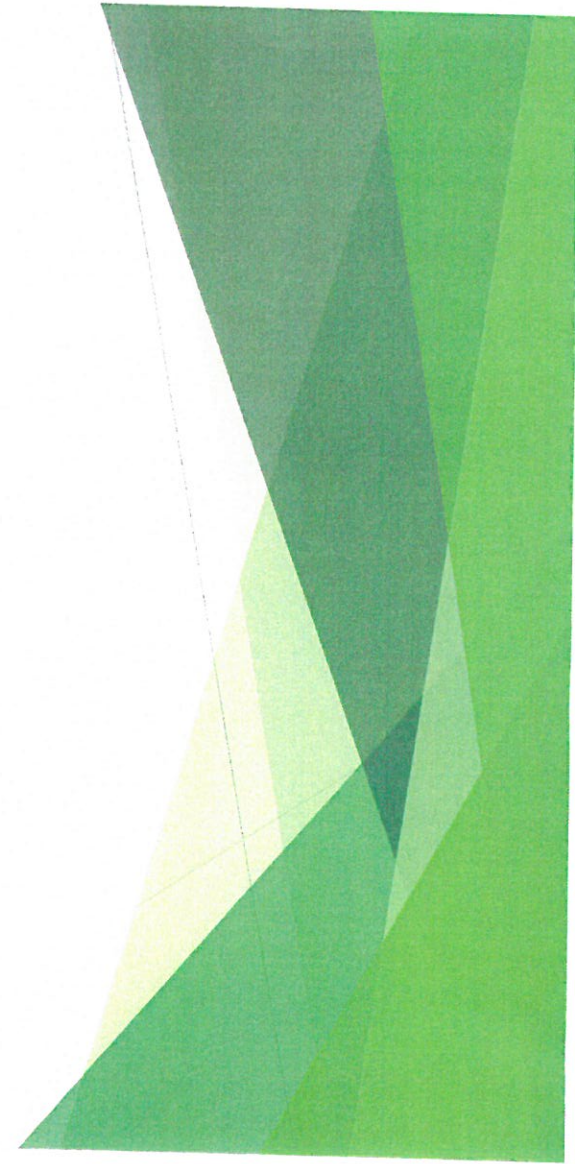
By Craig Terrell

Mr. Parker, Members of the Board of Environmental Protection,
My Name is Craig Terrell representing Carr Pond.



I stand in opposition of the revised mining rules.

My concerns are as follows:



Proposal New Mining Rules

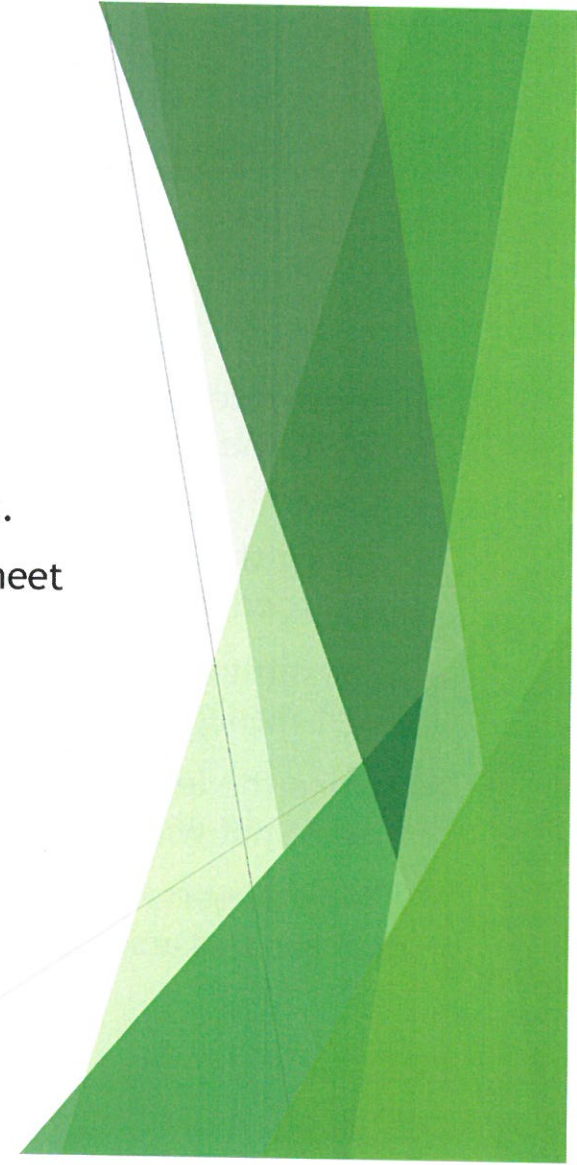
- ▶ Allow Exploration with out a permit
- ▶ Allowing up stream tilling's storage in a Flood Zone and Hydrologically unstable areas
- ▶ Allowing the use of the Lakes and ponds of Maine as staging areas and treatment and storage impoundments of the most hazardous materials
- ▶ Use of Maine Public and Reserve lands for Metallic Mining
- ▶ Allowing in and under the waters of Maine as previously prohibited
- ▶ Leaving the Maine taxpayers with the cost of clean up, which is happening as we speak.
- ▶ Not allowing a citizen interveners

Bald Mt Risks Hidden from the Public

- ▶ In the 80's we witnessed the Exploration Mining test drilling for ore samples on Bald Mt.
- ▶ The results of 500 holes drilled vertically and Horizontally into the mountain, was a draw down of Moose Brook below sustainability for fish and then a plume of drilling silt that is still with us today on Carr Pond 2 miles down hill from the site.
- ▶ Most of these holes remain open today and have never been closed properly.
- ▶ The Public has never been informed and there is no notice to the public about the dangers of Bald Mt or to those who live down stream on the Fish River Chain and Aroostook River
- ▶ Information was obtained through the Freedom of Information Act and was not available at the time that LD 1853 was drafted and late filed with out the public comment period. Changes that were made included, allowing the use of the waters (in and under)of Maine. Now due to a drafting error its law, and needs to rewritten.
- ▶ I question are we safe, how will these relaxed laws protect us, and why, despite all the thousands of request, can't we Ban Metallic Mining in Maine. At the very least on Public Lands and Volcanogenic Sulfide Deposits

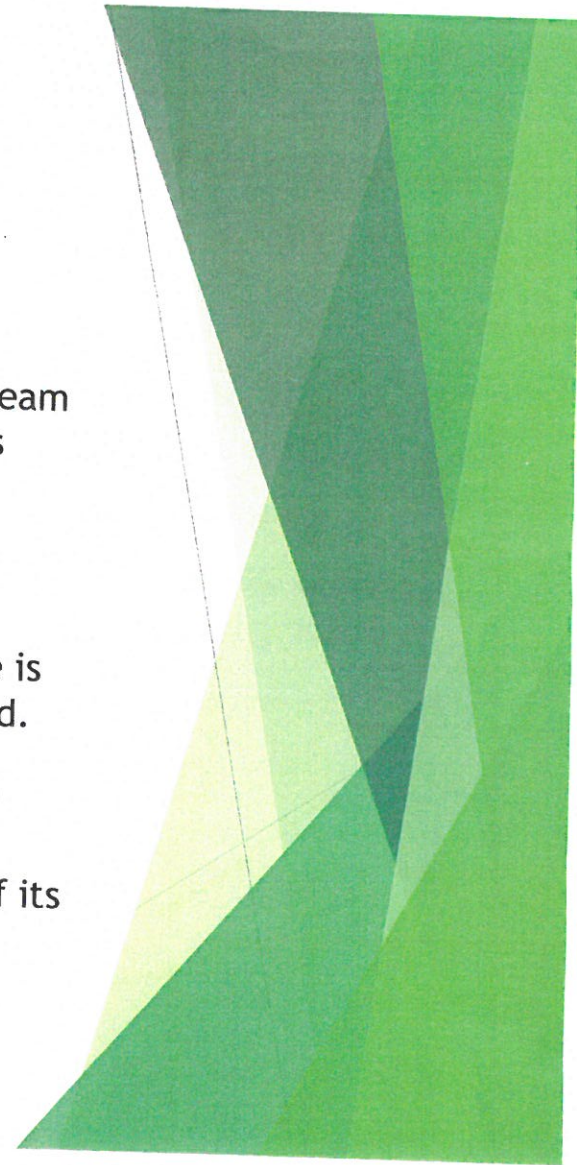
Proverbial wish list of JD Irving

- ▶ I have been a witness to the granting of a wish list of everything a mining company could ask for and did.
- ▶ To use the waters in and under Maine as loosely described in a mining area.
- ▶ To be able to diminish the streams down hill of the site, and **not** have to meet existing background quality.
- ▶ To be able to mine on Public Lands.



Two mining Company's and two legislative bipartisan rejections.

- ▶ These rules are not meant to clear up a permitting conflict, they are a dream list of the mining industry to make it economical to mine at the Tax Payers expense.
- ▶ During the drafting of LD 1853 and subsequent versions, we have seen and recorded all the false information that the industry has put forth.
- ▶ The most advanced and best science available has been ignored. No where is best management, best science and best recognized practices been applied.
- ▶ Twice the legislation and overwhelming public rejected these weak mining rules, not willing to give up the pristine waters of Maine.
- ▶ Twice Experts of the Mining industry walked away from Bald Mt. because of its sulfide and arsenic deposits.

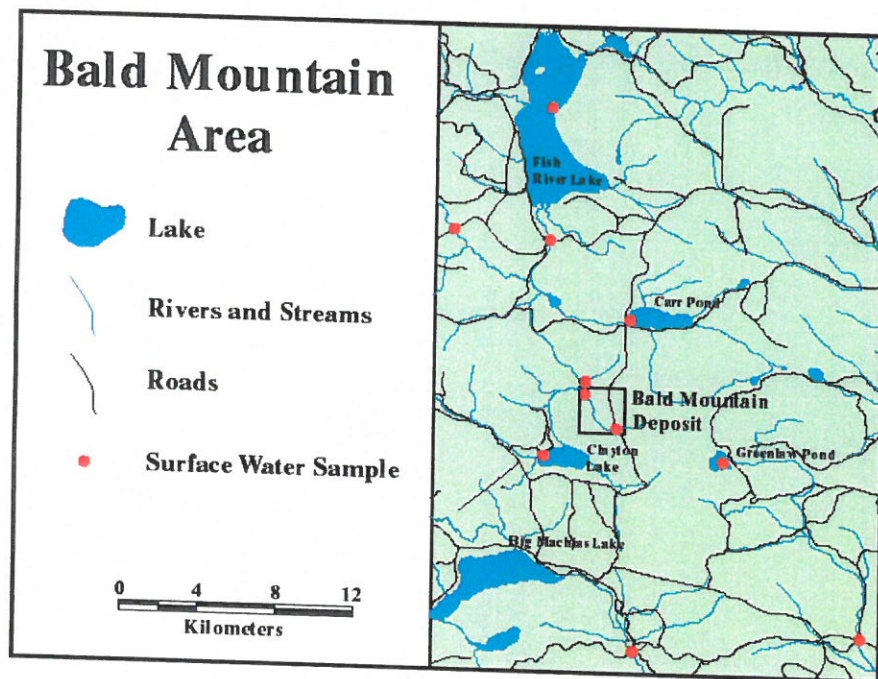


Closing the book on Bald Mt

- ▶ I implore you, please close this chapter of metallic mining and put a ban on metallic mining in Maine.
- ▶ Do not allow unpermitted exploration
- ▶ Do not allow tailing impoundments of wet mine wastes
- ▶ Keep our Public lands safe
- ▶ Keep our water and air safe from an industry that would exploit us
- ▶ Do not leave the public with the bill, as so often happens.



Affected area of Bald Mt.

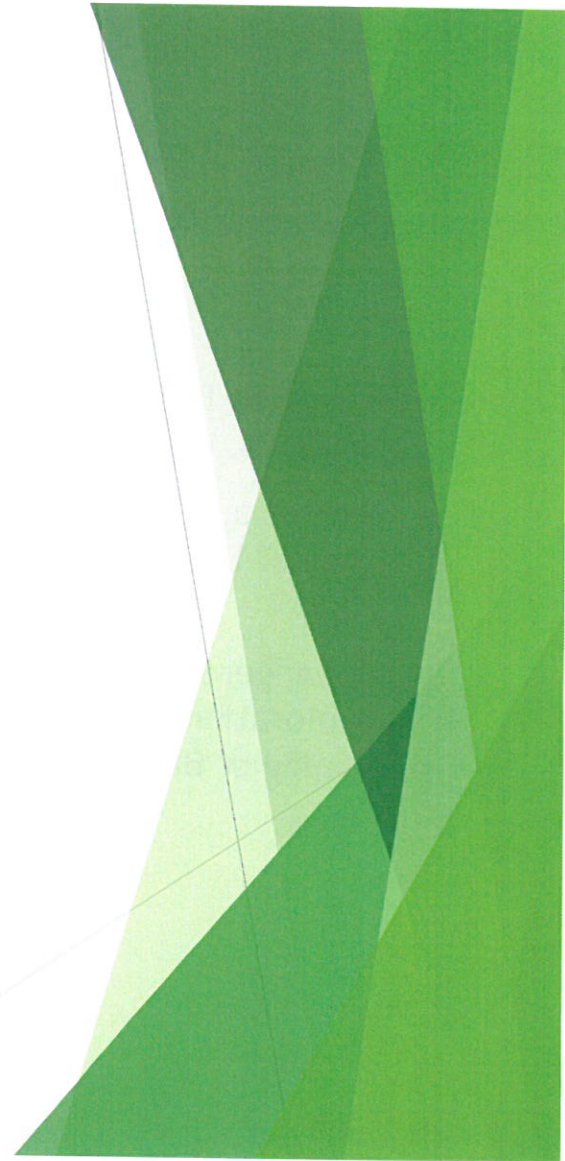


- ▶ Tourism
- ▶ Guides
- ▶ Sporting Camps
- ▶ Fishing ,Hunting
- ▶ Canoeing ,Kayaking
- ▶ Hiking
- ▶ Agriculture
- ▶ Aquaculture
- ▶ Businesses
- ▶ Property Values

Head Waters to the Fish River Chain

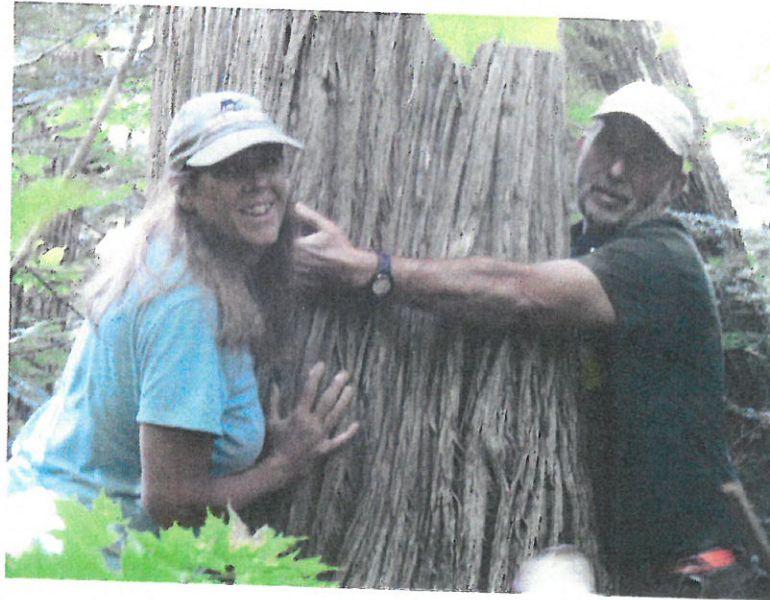


- ▶ Inlet spawning Salmon
- ▶ Native Brook Trout
- ▶ Hiking trails
- ▶ Sporting Camps
- ▶ Moose
- ▶ Otter
- ▶ Lynx
- ▶ Migrating Mergansers
- ▶ Flocks of Terns
- ▶ Loons



Old Growth White Cedar wetland Forest

- ▶ This tree is estimated at over 1000 yrs. old
- ▶ Part of a cedar forest at the base of Bald Mt. next to Moose Pond
- ▶ Endangered by the explorations and metallic mining of Bald Mt.



Acid Rock Drainage



- ▶ 39 Million tons of Sulfide Tailings are in Bald Mt.
- ▶ It contains massive volcanogenic sulfide ore deposits
- ▶ Not to mention the High concentration of Arsenic as high as 12,000ppm
- ▶ The science has all been done. Mining Bald Mt. is not a net benefit to Maine or the Mining Co.

Carr Pond T13 R8

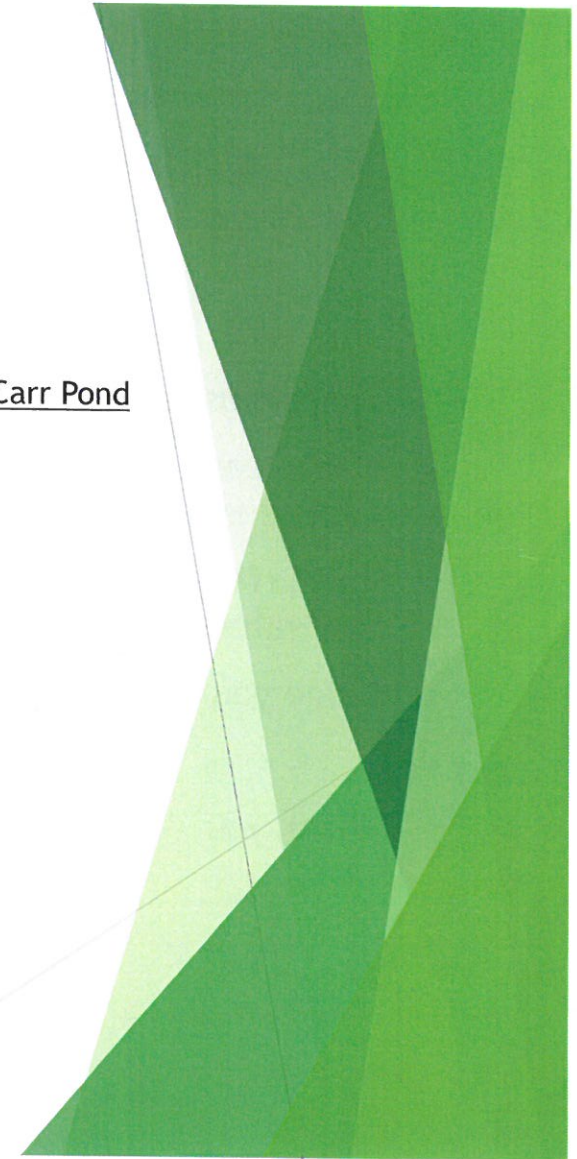


- ▶ Acres 323
- ▶ Perimeter 3.4 miles
- ▶ Mean Depth 27
- ▶ Max Depth 72
- ▶ Delorme page 63
- ▶ Water quality A
- ▶ Fishery Cold Water
- ▶ Heritage Brook Trout,
Salmon Whitefish,
Togue

At the end of the day its all about the water. Water=Life



► Carr Pond



Conclusion

- ▶ There must be a way to not poison our down stream neighbors
- ▶ If you leave here today remember one thing you must be accountable for your actions and your conscience.
- ▶ Its not to late to send these rules back and give us a statue that will protect the waters of Maine
- ▶ I urge you to Ban Metallic Mining in Maine.

Thank you

