

1  
2  
3  
4  
5  
6  
7  
8  
9  
10  
11  
12  
13  
14  
15  
16  
17  
18  
19  
20  
21  
22  
23  
24  
25  
26  
27

**DRAFT**

**ECOLOGICAL RISK ASSESSMENT WORK PLAN  
CDRL A007B**

**PER- AND POLYFLUOROALKYL SUBSTANCE RESPONSE  
FORMER LORING AIR FORCE BASE  
LIMESTONE, MAINE**

*Prepared for:*  
**Air Force Civil Engineer Center  
Joint Base San Antonio – Lackland, Texas**



*Prepared by:*



**WSP USA Environment & Infrastructure Inc.**

**Contract FA8903-16-D-0027**

**Task Order FA8903-21-F-1048**

**January 2023**



TABLE OF CONTENTS

1  
2 LIST OF ACRONYMS AND ABBREVIATIONS ..... iv  
3 1.0 INTRODUCTION ..... 1  
4 1.1 ECOLOGICAL RISK ASSESSMENT APPROACH ..... 1  
5 1.2 SITE HISTORY AND SETTING ..... 3  
6 1.3 INVESTIGATION HISTORY UNDER THE INSTALLATION RESTORATION PROGRAM..... 5  
7 1.4 PFAS USE AND INVESTIGATION AT LORING ..... 7  
8 1.6 REPORT LAYOUT..... 8  
9 2.0 TIER I SCREENING LEVEL ECOLOGICAL RISK ASSESSMENT ..... 9  
10 2.1 SCREENING-LEVEL PROBLEM FORMULATION..... 9  
11 2.2 SCREENING-LEVEL EXPOSURE ESTIMATE ..... 10  
12 2.2.1 Exposure Areas..... 10  
13 2.2.2 Screening Level Exposure Point Concentrations..... 10  
14 2.3 SCREENING LEVEL EFFECTS EVALUATION ..... 11  
15 2.4 SCREENING LEVEL RISK CHARACTERIZATION ..... 11  
16 3.0 TIER II BERA – STEP 3 REFINEMENT OF RISK ESTIMATES ..... 13  
17 3.1 EPC REFINEMENT ..... 13  
18 3.2 BENCHMARK REFINEMENT ..... 13  
19 3.3 BOUNDING OF RISK ESTIMATES..... 13  
20 3.4 COMPARISON TO BACKGROUND DRAINAGE..... 14  
21 4.0 UNCERTAINTY ASSESSMENT ..... 15  
22 5.0 ECOLOGICAL RISK ASSESSMENT EXIT CRITERIA ..... 17  
23 6.0 REFERENCES ..... 19

24  
25  
26 LIST OF FIGURES

27 Figure 1.0-1 Site Location  
28 Figure 1.2-1 Site Layout and Potential Source Areas  
29 Figure 1.2-2 Current Property Boundaries  
30 Figure 1.2-3 Potentiometric Map of Bedrock  
31 Figure 1.2-4 Potentiometric Map of Overburden  
32 Figure 1.2-5 Butterfield Brook Drainage – Proposed Floodplain Sediment Sample Locations  
33 Figure 1.3-1 Location of Previous IRP Sites

- 1 Figure 1.2-6 Greenlaw Brook Drainage – Proposed Floodplain Sediment Sample Locations
- 2 Figure 3.1-2 Background Drainage – Proposed Sampling Locations

3

4

**LIST OF TABLES**

- 5 Table 2.1-1 SLERA Assessment & Measurement Endpoints

- 6 Table 2.3-1 NOEC Screening Benchmarks

This page intentionally left blank.

## LIST OF ACRONYMS AND ABBREVIATIONS

1		
2	95% UCL	95th percent of the upper confidence level on the mean
3		
4	AFCEC	USAF Civil Engineer Center
5	AFFF	Aqueous Film Forming Foam
6	ANWR	Aroostook National Wildlife Refuge
7	ATSDR	Agency for Toxic Substances and Disease Registry
8		
9	BERA	Baseline Ecological Risk Assessment
10	BHHRA	baseline human health risk assessment
11	bgs	Below Ground Surface
12		
13	CERCLA	Comprehensive Environmental Response, Compensation and Liability Act
14	CFR	Code of Federal Regulations
15	COCs	Contaminants of Concern
16	COPEC	Contaminants of Potential Ecological Concern
17	CSM	Conceptual Site Model
18	CTE	Central Tendency Exposure
19		
20	DoD	Department of Defense
21		
22	EPC	Exposure Point Concentrations
23	ERA	Ecological Risk Assessment
24	ERAGS	Ecological Risk Assessment Guidance for Superfund
25		
26	FFA	Federal Facilities Agreement
27	FS	Feasibility Study
28	ft	feet
29	FTA	Fire Training Area
30	FYRs	Five Year Reviews
31		
32	GMZs	Groundwater Management Zones
33		
34	HA	Health Advisory
35	HI	Hazard Index
36	HQ	Hazard Quotient
37		
38	IC	Institutional Controls
39	IRP	Installation Restoration Program

1		
2	LDA	Loring Development Authority
3	LF	Landfill
4	LOEC	Lowest-Observed-Effect-Concentration
5	LUC	Land Use Controls
6		
7	MEDEP	Maine Department of Environmental Protection
8	MEG	Maximum Exposure Guideline
9		
10	NCP	National Contingency Plan
11	NGVD	National Geodetic Vertical Datum
12	NOEC	No-Observed-Effect-Concentrations
13		
14	OU	Operable Unit
15		
16	PA	Preliminary Assessment
17	PAH	Polycyclic Aromatic Hydrocarbon
18	PCB	Polychlorinated Biphenyls
19	PFAS	Per- and Polyfluoroalkyl Substance
20	PFBA	Perfluorobutanoic acid
21	PFBS	Perfluorobutanesulfonic acid
22	PFDA	Perfluorodecanoic acid
23	PFHxA	Perfluorohexanoic acid
24	PFHxS	Perfluorohexanesulfonic acid
25	PFNA	Perfluorononanoic acid
26	PFOA	Perfluorooctanoic acid
27	PFOS	Perfluorooctanesulfonic acid
28		
29	RCRA	Resource Conservation and Recovery Act
30	RI	Remedial Investigation
31	ROD	Record of Decision
32		
33	SERDP	Strategic Environmental Research and Development Program
34	SI	Site Inspection
35	SLERA	Screening Level Ecological Risk Assessment
36	SVOC	Semivolatile Organic Compound
37		
38	TPH	Total Petroleum Hydrocarbon
39		

- 1 USAF United States Air Force
- 2 USEPA United States Environmental Protection Agency
- 3 USFWS United States Fish and Wildlife Service
- 4
- 5 VOC Volatile Organic Compound
- 6
- 7 WSP WSP USA Environment & Infrastructure Inc



## 1.0 INTRODUCTION

WSP USA Environment & Infrastructure Inc (WSP, formerly Wood) has prepared this Ecological Risk Assessment (ERA) Work Plan in support of the Remedial Investigation (RI) at the former Loring Air Force Base (Loring or Site) located in Limestone, Maine (**Figure 1.0-1**). This Work Plan has been prepared for the United States Air Force (USAF) under Contract Number FA8903-16-D-0027 Task Order FA8903-21-F-1048.

The purpose of this Work Plan is to describe the technical approach to complete the Tier I Screening Level Ecological Risk Assessment (SLERA) and first step of the Tier II Baseline Ecological Risk Assessment (BERA) which is primarily focused on per- and polyfluoroalkyl substances (PFAS). Data collection and reporting focused on defining the nature and extent of PFAS are being executed under separate tasks.

The objective of the SLERA is to determine if the available data support a finding of no ecological risk and a conclusion that no further ecological risk assessment is needed, or whether there is evidence for potential ecological risks that require more detailed investigation and analysis conducted as part of a Baseline Ecological Risk Assessment (BERA).

The SLERA will be completed in accordance with the Comprehensive Environmental Response, Compensation, and Liability Act (CERCLA) and the National Contingency Plan (NCP) 40 Code of Federal Regulations (CFR) Part 300 (United States Environmental Protection Agency [USEPA], 1988).

### 1.1 ECOLOGICAL RISK ASSESSMENT APPROACH

PFAS encompass a heterogeneous group of more than 5,000 chemicals. For most PFAS, data suitable for assessing risks to the environment such as toxicity thresholds, effects, and bioaccumulation and elimination rates are lacking. This knowledge gap provides challenges for assessing risks from PFAS to the environment. However, the body of knowledge for this group of chemicals is expanding, and there are sufficient data to assess risks from eight PFAS compounds (PFBA, PFHxA, PFOA, PFNA, PFDA, PFBS, PFHxS, and PFOS) in soil, sediment pore water, and surface water, and are discussed further in **Section 2.3**.

The ERA will be conducted consistent with USEPA CERCLA ERA guidance documents, including:

- *Ecological Risk Assessment Guidance for Superfund (ERAGS): Process for Designing and Conducting Ecological Risk Assessments* (USEPA, 1997)
- *Guidelines for Ecological Risk Assessment* (USEPA, 1998)
- *The Role of Screening-Level Risk Assessments and Refining Contaminants of Concern in Baseline Ecological Risk Assessments, ECO Update* (USEPA, 2001)
- *ECO Updates published between 1991 and 2008* (USEPA 1991–2008)
- *Air Force Instruction 32-7020* (USAF, 2020)
- *Tri-Services Remedial Project Manager's Handbook for Ecological Risk Assessment* (USACE, 2000)
- *A Guide to Screening Level Ecological Risk Assessment (Tri-Services Environmental Risk Assessment Work Group* (TSERAWG, 2008).

- 1 • *Defense Environmental Restoration Program (DERP) Manual* (DERP, 2018)

2 Documents developed by the Department of Defense (DoD) *Strategic Environmental Research and*  
3 *Development Program* (SERDP) related to screening of PFAS concentrations in assessing potential  
4 ecological risks will also be considered and include:

- 5 • *A Framework for Assessing Bioaccumulation and Exposure Risks of PFAS in Threatened and*  
6 *Endangered Species* (ER18-1502) (Gobas et al., 2020)

7 Additionally, documents developed under contract with DoD in coordination and consultation with  
8 interagency subject-matter experts from across the DoD Tri-Services Environmental Risk Assessment  
9 Work Group and including USEPA will also be considered:

- 10 • *Derivation of PFAS Ecological Screening Values* (Grippio, et al., 2021)

11 Although some of these PFAS-specific documents were written to address risks to threatened and  
12 endangered species, they provide frameworks and technical support that can also apply to common (i.e.,  
13 unendangered) species.

14 The ERA may consider additional future guidance or technical documents available at the time the ERA is  
15 written, if technically appropriate and approved by the USAF Civil Engineer Center (AFCEC).

16 Under USEPA CERCLA guidance (USEPA, 1997), an ERA is carried out in a two-tiered approach:

- 17 • Tier I –SLERA
- 18 • Tier II –BERA

19 The Tier I SLERA includes the first two of the eight steps in an ERA identified in the ERAGS (USEPA, 1997):

- 20 • Step 1 is the Screening Level Problem Formulation and Ecological Effects Evaluation.
- 21 • Step 2 is the Screening-Level Exposure Estimate and Risk Calculation.

22 The goal of the Tier I SLERA includes the identification of the preliminary chemicals of potential ecological  
23 concern (COPECs), assessment endpoints, and exposure pathways that will be the focus for any additional  
24 investigation and analysis, if it is determined that the BERA process should continue to Tier II.

25 The Tier II BERA evaluates contaminants in greater detail and in the context of site-specific factors and is  
26 composed of Step 3 through Step 7:

- 27 • Step 3 is a refinement of risk estimates using more realistic assumptions than those that were  
28 applied in the Tier I SLERA.
- 29 • Steps 4 through 7 of the BERA involve revisions to the Conceptual Site Model (CSM) and detailed  
30 toxicity testing, tissue sample collection, or other collection, analysis, and characterization of  
31 site-specific ecological data.

32 Step 8 is a risk management step performed after the BERA is completed.

33 Technically, Step 3 Refinement is the first step of the Tier II BERA, but several available desktop tools can

1 be applied immediately after the screening-level risk characterization to introduce additional lines of  
2 evidence and further refine risk estimates. Therefore, Step 3 is commonly provided as part of the SLERA  
3 Report.

4 This ERA Work Plan consists of Steps 1 through 3 and thus will include the first step of a Tier II BERA. The  
5 need to perform subsequent steps will be determined only after completion of Step 3. This ERA Work Plan  
6 does not describe activities that may be associated with Steps 4 through 8.

## 7 **1.2 SITE HISTORY AND SETTING**

8 In 1946, the Strategic Air Command developed a plan for a global Air Force. The plan called for the  
9 Limestone Air Force Base at the northeastern tip of the United States. Loring was first established as  
10 Limestone Air Force Base in 1947 and was later renamed after Korean War aviator Charles J. Loring in  
11 1954. Construction began in 1947 and was completed in 1953. Loring Air Force Base was operated by the  
12 USAF from 1950 to 1994.

13 The installation became active in 1953 with the 42<sup>nd</sup> Bombardment Wing in residence to a series of state  
14 of-the-art bombers and support aircraft. In 1955, the 42<sup>nd</sup> Air Refueling Squadron was activated. Starting  
15 in 1981, substantial renovations were made to the installation, including the addition of a second runway.  
16 Base improvements continued through 1991 with the completion of a renovated alert facility, a new  
17 medical center, and a new maintenance facility and upgraded aircraft refueling. The installation was  
18 officially deactivated on 30 September 1994. Upon closure, responsibility for environmental cleanup at  
19 the installation transferred to the Air Force Base Conversion Agency (AFCEC, 2011).

20 Aqueous film forming foam (AFFF) containing PFOS and PFOA was used at Loring to respond to petroleum  
21 fires and during fire training exercises (Amec Foster Wheeler, 2015). In 1970, the USAF began purchasing  
22 and using AFFF containing PFAS (PFOS and/or PFOA) for extinguishing petroleum fires and firefighting  
23 training activities (USAF, 2012). AFFF was used at USAF installations in and around fire training areas  
24 (FTAs). AFFF also could have been used at other areas within installations, such as in and around hangars  
25 that had AFFF fire suppression systems, plane crash and fire emergency response sites, firefighting  
26 equipment testing areas, wash racks, areas where fire trucks and/or emergency vehicles were washed,  
27 and AFFF storage areas, to name a few. An installation layout map also showing potential PFAS source  
28 areas is provided as **Figure 1.2-1**.

29 The installation was placed on USEPA's National Priorities List of sites in 1990. Under the CERCLA 120, a  
30 Federal Facilities Agreement (FFA) between USEPA Region 1, the Maine Department of Environmental  
31 Protection (MEDEP), and the USAF, was signed into action January 1991 and amended in 1995. The FFA  
32 governs the environmental activities being conducted at Loring. Following the signing of the FFA, Loring  
33 was placed on the U. S. Congress 1991 Base Closure List 1991 and was closed in September 1994.

34 After the Base closure in 1994, the Maine State Legislature created the Loring Development Authority  
35 (LDA) to acquire and manage the properties within the geographic boundaries of Loring. The USAF  
36 transferred approximately 4,700 acres of land to the United States Fish and Wildlife Service (USFWS) in  
37 1998 for operation as the Aroostook National Wildlife Refuge (ANWR). Additional land was conveyed to

1 construct housing for the local Aroostook Band of Mi'kmaq (Wood, 2018). Current property boundaries  
2 are depicted by the red and white dotted line in **Figure 1.2-1**.

3 Loring is located approximately west longitude 67°89'21" by north latitude 46°94'56" occupying  
4 approximately 8,704 acres in the community of Limestone, Maine located in Aroostook County (**Figures**  
5 **1.0-1 and 1.2-1**). The land surrounding the installation is primarily rural and agricultural. Currently there  
6 is limited commercial and industrial use at Loring. Use of former base property includes, but is not limited  
7 to, an inn on Virginia Place, a residential community consisting of a series of rental units managed by a  
8 single property agent on Manser Road, and several additional homes on Development Drive. Former Air  
9 Force Base properties are supplied by municipal water. The airflight control tower is not operational.  
10 Planes landing at Loring are infrequent and are typically unscheduled.

11 Parcels within the Loring boundary are now owned by other entities including the ANWR, which is open  
12 to the public for recreational use in designated areas. A large parcel to the south is owned by the Mi'kmaq  
13 and is depicted on **Figure 1.2-2**.

14 Loring lies in the lower Aroostook River Basin. Topography of the basin is typified by a succession of  
15 gently rolling to steeply sloping ridges separated by narrow valleys. Elevations of the ridges range from  
16 600 to 800 feet (ft) above sea level (referenced elevations are based on the National Geodetic Vertical  
17 Datum [NGVD]). Narrow swamps and bogs extend between the ridges. The valleys range in elevation  
18 from 500 to 600 ft above the NGVD (ABB, 1997a,b).

19 Loring is split by a bedrock groundwater divide (**Figure 1.2-3**) and by an overburden divide (**Figure 1.2-4**).  
20 These divides define the natural drainage basins. Butterfield Brook Drainage (**Figure 1.2-5**) generally lies  
21 to the east of the runway, and the Greenlaw Brook Drainage (**Figure 1.2-6**) lies generally to the west.

22 The Butterfield Brook Drainage Basin (**Figure 1.2-5**) is composed of storm sewers, open drainage ditches,  
23 and unnamed streams that flow into East Loring Lake or Butterfield Brook, and eventually into Durepo  
24 Reservoir and Limestone Stream. The southeastern portion of Loring drains into the main stem of  
25 Limestone Creek Source through Noyes Pond. Source areas within the Butterfield Brook Drainage Basin  
26 or source areas which could drain into Butterfield Brook via surface runoff or storm sewer conveyance  
27 include:

- 28 • FTA (Area 1),
- 29 • Part of the Nose Dock Area (Areas 10, 11, 12, 13, 14, and 15),
- 30 • Fuel Dump Area (Area 17),
- 31 • Part of the Main Runway Foaming Area (Area 18),
- 32 • B-52 Crash Area (Area 19), and
- 33 • Former Jet Engine Test Cell Area (Area 24).

34 The Greenlaw Brook Drainage Basin (**Figure 1.2-6**) is composed of storm sewers, open drainage ditches,  
35 and unnamed streams that drain the majority of Loring west of the groundwater divide (**Figures 1.6-1**  
36 **and 1.6-2**). Source areas within the Greenlaw Brook Drainage Basin or source areas which could drain  
37 into Greenlaw Brook via surface runoff or storm sewer conveyance include:

- 1 • Landfill (LF) No. 2 (Area 2)
- 2 • LF No. 3 (Area 3)
- 3 • Base Supply (Area 4)
- 4 • Structural Fire Station (Area 5)
- 5 • Fire Department Training/Burn House (Area 6)
- 6 • Crash Fire Station (Area 7)
- 7 • Arch Hangar (Area 8)
- 8 • Jet Engine Maintenance Building (Area 9)
- 9 • Part of the Nose Dock Area (Areas 10, 11, 12, 13, 14 and 15)
- 10 • Fuel Tank Farm (Area 16)
- 11 • Part of Area 18 Main Runway Foaming Area (Area 18)
- 12 • B-52 Crash Area (Area 20)
- 13 • Flight Line Drainage Ditch and Industrial Wastewater Treatment Facility (Area 21)
- 14 • Wastewater Treatment Plant (Area 22)
- 15 • Base Laundry (Area 23)

16 Some source areas (e.g., B-52 Crash Area) could affect both drainage basins since surface water runoff  
17 does flows in a different direction than groundwater. One of the potential PFAS study areas (Base Supply  
18 – Area 4) had no documented storage or releases of AFFF and was previously removed from the RI and  
19 will not be further evaluated in the ERA.

### 20 **1.3 INVESTIGATION HISTORY UNDER THE INSTALLATION RESTORATION PROGRAM**

21 Under the FFA for Loring, 15 Installation Restoration Program (IRP) Operable Units (OUs) were established  
22 according to geographic location, disposal type (e.g., landfill), or affected media. The primary  
23 contaminants of concern (COCs) at the site were chlorinated solvents including chlorinated volatile  
24 organic compounds (VOCs), semivolatle organic compounds (SVOCs), and certain total petroleum  
25 hydrocarbon (TPH) compounds. Separate RI and Feasibility Study (FS) reports were prepared for each OU.  
26 The IRP sites and AFFF release sites are depicted in **Figure 1.3-1**.

27 Eleven Records of Decision (RODs) were completed at Loring describing site cleanup plans between 1994  
28 and 1999 (ABB, 1994, 1996 and 1997; and HLA, 1998 and 1999). An amendment to the OU 12 ROD was  
29 completed in 2018 for vapor intrusion (USAF, 2018).

30 Construction work required under each ROD has since finished. Remedy optimization, operation and  
31 maintenance, and long-term monitoring work are ongoing until cleanup goals have been met for fuels and  
32 solvent related contamination. There are several Groundwater Management Zones (GMZs) implemented  
33 as remedy components in final RODs as permanent Land Use Controls/Institutional Controls (LUC/ICs).  
34 These are discussed further in subsequent sections. The USAF is responsible for 5-Year Reviews (FYRs) at  
35 the Site where the purpose is to evaluate and determine if the implemented remedies are and will  
36 continue to be protective of human health and the environment. Five FYRs have been completed and the  
37 latest was conducted in 2020 (Aptim, 2020).

1 Three previous IRP Sites at Loring have been addressed during previous programs and are reported to  
2 have used AFFF or received soils that may have been exposed to AFFF. The location of the former sites  
3 with AFFF use are discussed below. A more detailed description of each of these sites is provided in Section  
4 5 of the RI Work Plan (Wood, 2022):

- 5 • FTA (IRP Site FT-07) was used for fire training exercises, where AFFF was the primary extinguishing  
6 agent used between 1970 and 1989. The site consisted of a mock aircraft located in a bermed  
7 circular unlined pit. During training exercises, waste fluids consisting of fuels, oils, and solvents  
8 were released into the FTA pit, ignited, and extinguished (HLA, 1999a). Extensive excavation has  
9 occurred at this location and soils were disposed in LF-3.
- 10 • LF-2 (IRP Site LF-02) is unlined and may have received impacted soil from industrial areas on the  
11 installation where AFFF may have been used; however, no specific AFFF disposal was  
12 documented. The selected source control remedial action for LF-2 in the OU2 ROD (ABB, 1994) is  
13 containment using a low-permeability cap. The cover system was designed in accordance with  
14 Resource Conservation and Recovery Act (RCRA) Subtitle C and Maine Hazardous Waste  
15 Regulations. Site preparation for the cover system began in 1994, and the cover system was  
16 constructed in 1996. The landfill was closed with the construction of the RCRA cap. A developed  
17 rural area exists on the west side of Loring, which is downgradient of LF-2. LF-2 lies in the apparent  
18 upgradient vicinity of a residence in the Town of Caribou where sampling of one private water  
19 supply well indicated either non-detect or low concentrations of PFOS and PFOA below the 2016  
20 USEPA lifetime Health Advisory (HA) and the Maine Maximum Exposure Guidelines (MEGs) during  
21 sampling rounds in 2015, 2016, and 2017.
- 22 • LF-3 (IRP Site LF-20) is unlined and received contaminated soils excavated from FT-07, which has  
23 documented AFFF use. The remedial control selected for this landfill in the OU2 ROD (ABB, 1994)  
24 uses a low-permeability cap. The cap was designed in accordance with RCRA Subtitle C and Maine  
25 Hazardous Waste Regulations. Installation of the cap was completed in 2000. A developed rural  
26 area which relies on private drinking water is located proximal to the western boundary of Loring  
27 which is downgradient of LF-3. LF-3 lies in the apparent upgradient vicinity of two residences in  
28 the Town of Caribou where private well sampling was conducted: one in 2015 and one in 2017. In  
29 addition, a multi-resident supply well located downgradient of LF-3 in the rural Westgate area  
30 was sampled in 2015, 2016, and 2017. The well's 1,000 ft wellhead protection zone falls within  
31 the former installation boundary. Analysis of drinking water collected from the three private wells  
32 (two private residential wells and one multi-residence private water supply well) indicated low  
33 concentrations of PFOS and PFOA below the 2016 USEPA lifetime HA/Maine MEGs.

34 In 2006 the Agency for Toxic Substances and Disease Registry (ATSDR) developed a health consultation  
35 (ATSDR, 2006) to address concerns expressed by the Mi'kmaq about the safety of using plant and animal  
36 resources from Loring lands. The objective of the evaluation was to provide perspective about whether  
37 the COCs at Loring are likely to accumulate in plant and animal resources traditionally used by the  
38 Mi'kmaq. COCs include metals (barium, cadmium, lead, mercury, silver, and zinc), pesticides (chlordane,  
39 DDT [dichlorodiphenyltrichloroethane], DDD [dichlorodiphenyldichloroethane], and DDE

1 [Dichlorodiphenyldichloroethylene]), PCBs, PAHs, and petroleum compounds. ATSDR presented  
2 observations based on literature reviews about the potential for exposure to contaminants from certain  
3 traditional Mi'kmaq practices and came to the following conclusions:

- 4 • Ingestion of soil presented the highest potential for risk at sites contaminated with heavy metals.
- 5 • Workers (basket weavers and/or plant harvesters) may inhale substantial amounts of soil dust  
6 due to working in an enclosed environment.
- 7 • Plant materials present a potential risk if they are consumed for medicinal purposes, used for dyes  
8 or paints (including cosmetics and face paint), or burned in sweat lodges (volatilization of  
9 contaminants into the air).
- 10 • Root crops and low-lying plants grown in contaminated soil are likely to be more harmful than  
11 plants and crops that are higher from the ground because crops that grow higher from the ground  
12 are not a significant exposure source to contaminants in the soil.
- 13 • Animal skins and furs may contain high levels of mercury according to literature review.

14 In 2012 the USAF issued guidance on sampling for emerging contaminants PFOS and PFOA (USAF, 2012).  
15 As a result, the USAF conducted a Preliminary Assessment (PA) in 2015 (Amec Foster Wheeler, 2015) to  
16 evaluate the handling, storage, and usage of AFFF containing PFOS and PFOA at Loring. The PA evaluated  
17 22 potential AFFF areas and recommended 21 for further investigation and characterization. Based on the  
18 PA, a Site Inspection (SI) was completed in 2018 (Wood, 2018). The SI included sampling of soil, surface  
19 water, sediment, groundwater monitoring wells, private wells, and public water supply wells. Fish tissue  
20 was also collected and analyzed during this effort. The results of the PA and the SI are further summarized  
21 in Section 1.8 of the RI Work Plan (Wood, 2022).

#### 22 **1.4 PFAS USE AND INVESTIGATION AT LORING**

23 Since 2013, several PFAS investigations have been completed at the Site. These investigations are listed  
24 along with a summary of key findings or actions in Section 1.8 of the RI Work Plan (Wood, 2022). The  
25 SLERA will consider PFAS analytical results from soil, surface water, sediment, pore water, and  
26 groundwater collected from each of these investigation as well as data collected during the RI.

#### 27 **1.5 STAKEHOLDER INVOLVEMENT**

28 A Restoration Advisory Board is not currently active for the Site, however efforts to engage the local  
29 community are on-going. These stakeholder involvement efforts have focused principally on public health  
30 concerns and have not specifically covered ecological topics, as summarized below.

31 Two questionnaires were sent in May/June 2022, one to local residents residing within Loring to better  
32 understand recreational use at Loring. Residents were also asked about their level of interest for further  
33 community involvement regarding the RI. The second questionnaire was sent to local farmers in an effort  
34 to identify the source of irrigation water for commercial crops (i.e. groundwater or surface water) and  
35 related information. A public information session was held on 8 June 2022 in the town of Limestone. It  
36 was noted at the public meeting that much of the irrigation infrastructure directly to the east of Loring is

1 using surface water.

2 USAF and WSP held a meeting with the Mi'kmaq on 9 September 9 2021 to discuss exposure scenarios for  
3 consideration on the parcels within Loring owned by the Mi'kmaq. The Mi'kmaq indicated that future  
4 planned uses of the parcels include primarily commercial/industrial uses such as a pellet mill, which may  
5 require use of groundwater and potentially developing a campground, which could include a potable well.  
6 There are no current residential or recreational uses and no plants or animals are currently harvested as  
7 the Mi'kmaq prohibits hunting and foraging; however, there are no land-use controls in the form of deed  
8 restrictions on the land preventing traditional cultural exposure scenarios such as harvesting wild plants.  
9 The Mi'kmaq provided attendees with a copy of the Maine First Nation Exposure Scenarios: Wabanaki  
10 Traditional Cultural Lifeways Exposure Scenario (Harper & Ranco, 2009). The Mi'kmaq also indicated that  
11 certain EPA default exposure assumptions such as lifetime scenarios are not necessarily appropriate for  
12 First Nations, as USEPA assumes a resident typically lives in one place for 26 years, however a member of  
13 the Mi'kmaq are expected to live in one place for their full lifetime. The exposure document was used in  
14 conjunction with the information obtained at the meeting to draft exposure scenarios for these parcels,  
15 which in turn provides the basis for the CSM discussed in the next section. The CSM was communicated  
16 to the Mi'kmaq on 25 January 25 2022.

17 A second meeting was held on 8 June 2022 with USAF, USEPA, MEDEP, WSP and the Mi'kmaq. The  
18 proposed exposure scenarios were discussed. Additionally, the Mi'kmaq expressed a need for technical  
19 assistance in reviewing risk assessment documents. The Mi'kmaq raised concerns about hunting moose  
20 on the property and WSP suggested reaching out to Maine Fish & Game to identify whether any Agency-  
21 led PFAS sampling was being considered. Reaching out to the ANWR was also suggested to see if a joint  
22 effort might be possible. The discussion also focused on proposed sample collection on the Mi'kmaq  
23 property. WSP will work with the Mi'kmaq to identify additional sampling areas within their parcel where  
24 specific plants that would be attractive for harvesting may grow, such as fiddlehead ferns, muskrat root,  
25 and Labrador tea. These topics will be primarily addressed via the baseline human health risk assessment  
26 (BHHRA).

## 27 **1.6 REPORT LAYOUT**

28 In accordance with USEPA guidance the ERA will be comprised of the following sections:

- 29 • Tier I SLERA, presented in Section 2;
- 30 • Tier II BERA– Step 3 Refinement of Risk Estimates, presented in Section 3;
- 31 • Uncertainty Assessment, presented in Section 4; and
- 32 • A discussion of ecological risk assessment exit criteria in Section 5.

33



## 2.0 TIER I SCREENING LEVEL ECOLOGICAL RISK ASSESSMENT

A SLERA includes four primary phases: (1) problem formulation, (2) exposure estimate, (3) evaluation of ecological effects, and (4) risk characterization. An ecological CSM is developed during the problem formulation phase to help understand exposure at the Site and to help select assessment and measurement endpoints.

### 2.1 SCREENING-LEVEL PROBLEM FORMULATION

The problem formulation provides the framework upon which the risk assessment is organized. The problem formulation step includes the following elements:

- A description of the facility's operating and investigation history and known releases.
- A description of the environmental setting and natural communities associated with terrestrial and freshwater aquatic habitats, including the presence of any state or federally threatened or endangered species. The environmental setting discussion will be informed by a visit to the Site by a field ecologist to characterize habitat, flora and fauna. The environmental setting will also be informed by a review of data obtained from agency sources such as National Wetland Inventory maps, USGS soil maps, state and federal wildlife surveys, and information collected during other phases of investigation at the Site such as groundwater transport maps, seep maps, and wetland delineations. Descriptions of environmental setting presented in ecological risk assessments previously conducted at Loring legacy IRP sites may be considered, as appropriate.
- A summary of PFAS data obtained during historical investigations and the RI. Analytical data collected during the planned RI and deemed usable following data validation and according to the project-specific Quality Assurance Program Plan will be evaluated in the SLERA. Previously collected relevant data adequately validated and deemed usable at the time of collection will also be evaluated. Data will be summarized and presented in tables listing detected analytes, frequency of detection, range of detection limits (laboratory reporting limits) for non-detects, maximum and average concentration for each detected analyte, and location of the maximum detection. Average concentrations will be calculated using one-half the reporting limit for non-detected concentrations (i.e., U-qualified data).
- A description of contaminant fate and transport mechanisms that affect contaminant migration from source areas to receiving media and ecological receptors.
- A brief summary of toxicity profiles for detected analytes. Considering that studies exploring toxicity mechanisms and effects in ecological receptors for almost all PFAS are scarce, the toxicity profile summary is anticipated to be a general description of the adverse effects that may be experienced by ecological receptors exposed to the PFAS chemical family and will not be more than a paragraph in length.
- An ecological CSM that illustrates the initial assessment of fate and transport mechanisms of chemical constituents, complete exposure pathways (including potentially affected dietary

1 items), and primary and secondary receptors. The ecological CSM will be developed as part of the ERA  
2 work plan execution for inclusion in the ERA report and will include all direct contact pathways with  
3 contaminated abiotic media (soil, groundwater, surface water, pore water, sediment) and indirect pathways  
4 due to uptake from food items (food chain pathways). If an exposure pathway is not complete for a  
5 specific chemical constituent, that exposure pathway would not be evaluated further.

- 6 • Identification of assessment and measurement endpoints. Assessment endpoints in the SLERA  
7 define ecological attributes that are to be protected. Measurement endpoints are measurable  
8 characteristics of those attributes that can be used to gauge the degree of actual or potential  
9 impact. Assessment endpoints most often relate to attributes of biological populations or  
10 communities. They contain an entity (e.g., invertebrate populations) and an attribute of that  
11 entity (e.g., survival rate). The entity in the assessment endpoint is typically a population or  
12 community. In the case of specially protected species, the assessment endpoint frequently  
13 focuses on individuals. Measurement endpoints are related to the assessment endpoint and the  
14 effects that can be measured or observed (e.g., comparison with no-effects concentrations). **Table**  
15 **2.1-1** presents the assessment and measurement endpoints that will be evaluated in the SLERA.

16 The initial screening level problem formulation will include the evaluation of potential exposures to all  
17 applicable representative ecological receptors and environmental media. The screening process will  
18 identify media and pathways for additional evaluation.

## 19 **2.2 SCREENING-LEVEL EXPOSURE ESTIMATE**

20 This phase of the SLERA identifies exposure areas to be assessed and screening level exposure point  
21 concentrations (EPCs).

### 22 **2.2.1 Exposure Areas**

23 The SLERA will assess risks to the environment. Terrestrial exposures at each of source areas at Loring  
24 (**Figure 1.2-1**) will be assessed individually. Freshwater aquatic (i.e., surface water, sediment, and/or pore  
25 water) exposures associated with 17 of the source areas (Area 5, Area 8 through Area 22, and Area 24)  
26 will be assessed individually. Freshwater aquatic exposures within the off-Base Butterfield Brook Drainage  
27 Basin (**Figure 1.2-5**) and Greenlaw Brook Drainage Basin (**Figure 1.2-6**) which occur outside of the  
28 boundaries of Loring will also be assessed.

29 Although there is no direct exposure to groundwater by ecological receptors, groundwater discharging to  
30 surface water may result in a complete exposure pathway. If the groundwater exposure pathway is found  
31 to be complete, groundwater associated with source areas will also be evaluated.

### 32 **2.2.2 Screening Level Exposure Point Concentrations**

33 For each terrestrial exposure area, soil EPCs for PFAS will be calculated as the maximum concentration  
34 from the 0-2 ft below ground surface (bgs) interval which is the zone of predominant biological activity  
35 (USEPA, 2015). Samples located under buildings or other impervious surfaces will be excluded from the  
36 EPC calculation because soils under buildings and impervious surfaces are considered to be unavailable to  
37 wildlife.

1 For each aquatic exposure area, sediment and pore water EPCs will be calculated as the maximum  
2 concentration from the 0–6-inch bgs interval which is the predominant biologically active zones in  
3 sediment (USEPA, 2015). Surface water EPCs will be calculated as the maximum concentration in each  
4 exposure area. If the groundwater exposure pathway is found to be complete, groundwater EPCs will be  
5 calculated as the maximum concentrations in each exposure area.

### 6 **2.3 SCREENING LEVEL EFFECTS EVALUATION**

7 This phase of the SLERA identifies thresholds of ecological effects, also called benchmark values or  
8 screening values, for soil, surface water, bulk sediment, sediment pore water, and groundwater. Following  
9 ERAGS, screening values used in the SLERA represent no-observed-effect-concentrations (NOECs), which  
10 are concentrations believed to be non-hazardous to receptors. NOECs are determined from chronic  
11 laboratory studies in which test organisms are subjected to various concentration (plants, invertebrates)  
12 or dose (bird, mammals) levels of individual chemicals.

13 USEPA has not yet developed consensus ecological screening benchmarks for PFAS. Therefore, NOEC  
14 screening values were obtained from Derivation of PFAS Ecological Screening Values (Grippio et al., 2021),  
15 a technical document developed by Argonne National Laboratory under contract with DoD in coordination  
16 and consultation with an interagency team of subject-matter experts from across the DoD services  
17 through the DoD Tri-Services Environmental Risk Assessment Work Group and in collaboration with  
18 AFCEC. Several ecological risk assessors and environmental scientists from the EPA Ecological Risk  
19 Assessment Forum and program offices, however, provided technical input and advice. This document  
20 provides ecological screening levels for eight PFAS compounds (PFBA, PFHxA, PFOA, PFNA, PFDA, PFBS,  
21 PFHxS, and PFOS) in surface water/pore water and soil as summarized in **Table 2.3-1**.

22 As of the submittal date of this ERA Work Plan, bulk sediment screening benchmarks protective of direct  
23 exposure are not available for benthic receptors (Ankley et al., 2020; Grippio et al., 2021) and wildlife  
24 (Grippio et al., 2021). Thus, pore water will be used to assess risks to the benthic community. Because soil  
25 and surface water benchmarks include values protective of wildlife dietary ingestion, bird and mammal  
26 food chain models will not be conducted as part of the Tier I SLERA. As of the submittal date of the ERA  
27 Work Plan, USEPA has proposed Draft National Recommended Water Quality Criteria for PFOS and PFOA.  
28 However, these draft criteria are subject to change and so will be considered only if finalized before the  
29 SLERA is conducted and submitted.

30 The ERA may consider additional future toxicity values available at the time the ERA is written, if  
31 technically appropriate and approved by AFCEC. DoD adopts toxicity values for use across all Service  
32 Branches.

### 33 **2.4 SCREENING LEVEL RISK CHARACTERIZATION**

34 The Tier I SLERA will compare EPCs to screening benchmarks protective of terrestrial and aquatic receptors  
35 to calculate a Hazard Quotient (HQ) as shown in Equation 1:

36 
$$HQ = \frac{EPC}{Benchmark} \quad (\text{Equation 1})$$

1 An  $HQ < 1$  indicates that the chemical constituent alone is unlikely to cause adverse ecological effects and  
2 may thus be eliminated from further review. An  $HQ \geq 1$  indicates that an analyte will be retained as a  
3 preliminary COPEC for further evaluation in the Tier II BERA. As of the submittal date of the ERA Work  
4 Plan, it is not the accepted practice to sum HQs of individual PFAS to calculate a Hazard Index (HI);  
5 therefore, HIs will not be calculated.

### 3.0 TIER II BERA – STEP 3 REFINEMENT OF RISK ESTIMATES

1  
2 Ecological risk assessment is an iterative process that allows for and encourages modification as additional  
3 site information becomes available. At this stage of the risk assessment process (Tier II Step 3), ERAGS  
4 provides for the use of additional calculations, analyses, and data review to help characterize risk (or lack  
5 thereof). Technically, Step 3 Refinement is the first step of the Tier II BERA, but several available desktop  
6 tools can be applied immediately after the screening-level risk characterization to introduce additional  
7 lines of evidence and further refine risk estimates. The Step 3 Refinement is therefore commonly included  
8 as part of the SLERA report. The Tier II BERA Step 3 will identify refinement COPECs. Contingent on results  
9 of screening level risk estimates calculated using maximum concentrations, it may be appropriate to  
10 perform one or more of the following desktop refinement tools including EPC refinement, benchmark  
11 refinement, and bounding of risk estimates as described below. Additionally, other tools may be available  
12 in the future at the time the ERA is written. If appropriate, the risk characterization and ecological CSM  
13 may be updated pending the outcome of these refinement steps.

#### 3.1 EPC REFINEMENT

14  
15 The screening-level risk calculation uses the maximum detected concentration of each analyte to calculate  
16 an HQ. Maximum detections overestimate concentrations to which a population or community of  
17 receptors could be exposed over time and across an exposure area. Comparing average concentrations  
18 with benchmarks allows for more realistic estimates of risk to communities or populations of ecological  
19 receptors. Typically, the 95th percent of the upper confidence level on the mean (95% UCL) is used to  
20 conservatively estimate average, referred to as the central tendency exposure (CTE) EPC. The 95% UCLs  
21 would be calculated using the most recent version of ProUCL software, currently version 5.2 (USEPA,  
22 2022). If the ProUCL software algorithms determine that there are not enough data to calculate a 95%  
23 UCL, the CTE may be estimated using an arithmetic mean, median, or other measure of central tendency.

#### 3.2 BENCHMARK REFINEMENT

24  
25 Screening-level risk calculations are made with conservative NOEC-based benchmarks that represent non-  
26 hazardous concentrations. In contrast, lowest-observed-effect-concentration (LOEC)-based benchmarks  
27 represent concentrations at or above which adverse effects are possible. A LOEC is the lowest  
28 concentration where an effect has been observed in chronic ecotoxicity studies. LOECs will be derived  
29 from the same DoD sources previously cited that provide NOECs (e.g., Grippo et al., 2021). The methods  
30 used to derive LOECs will depend on the body of literature available for each specific PFAS compound and  
31 will follow industry standards and best practices. LOECs may also be derived from other sources which  
32 may be available in the future, if approved by the DoD and USAF.

#### 3.3 BOUNDING OF RISK ESTIMATES

33  
34 The screening-level risk characterization calculates an HQ using maximum concentrations and NOEC  
35 benchmark. As part of the Tier II BERA Step 3 Refinement step, additional HQs may be calculated using  
36 CTE EPCs and LOEC benchmarks. An HQ based on maximum concentrations and NOEC paired with an HQ  
37 based on the CTE EPC and LOEC allows a bracketing of risk predictions. The former results in a conservative

1 estimate of risk and the latter are more likely to be associated with actual adverse effects. HQs would be  
2 interpreted by considering the magnitude as well as other pertinent toxicological or spatial distribution.

### 3 **3.4 COMPARISON TO BACKGROUND DRAINAGE**

4 PFAS concentrations associated with releases in surface water and sediment will also be compared to  
5 concentrations collected from two background drainage locations. Background concentrations represent  
6 ambient conditions absent site-related releases. Generally, risk management actions are not taken to  
7 reduce contaminants to concentrations at or below natural or anthropogenic background levels. Two  
8 surface water and sediment background locations have been established as part of the Installation's long-  
9 term monitoring network, including Prestile Brook and Caribou stream (**Figure 3.1-1**). Both locations were  
10 included in the SI (Wood, 2018) and are being resampled as part of the RI. No terrestrial background  
11 sample locations have been established.

#### 4.0 UNCERTAINTY ASSESSMENT

1  
2 The interpretation of risk estimates is subject to a variety of uncertainties that result from the use of  
3 assumptions and the lack of information necessary to quantify actual exposure and effects  
4 concentrations. The ERA will summarize major uncertainties and assumptions, describe whether  
5 uncertainties lead to an over- or under-estimation of risks, and explain steps taken to mitigate those  
6 uncertainties. Topics of uncertainty may include exposure concentrations, detection frequencies, data  
7 quality (including whether limits or quantitation limits are adequate for evaluating the ecological risks),  
8 chemical speciation, the existence of Draft Nationally Recommended Ambient Water Quality Criteria, and  
9 underlying biases in the screening benchmarks (e.g., bioavailability, area use factors, diet composition).  
10 Uncertainties associated with PFAS currently lacking toxicity information, or potential  
11 additive/synergistic/antagonistic effects, will also be qualitatively discussed.

12

1

This page intentionally left blank.



## 5.0 ECOLOGICAL RISK ASSESSMENT EXIT CRITERIA

The Tier I SLERA and Tier II BERA Step 3 may conclude:

- There is sufficient information to assess risks to the environment and the data support no further action;
- The data indicate that adverse effects on receptors are possible and there is enough information to support corrective measures; or
- There is insufficient information to assess risks to the environment and additional information is needed to reduce uncertainty.

Selection of the outcome will depend on several factors including but not limited to: the distribution and frequency of detections, the magnitude of NOEC and LOEC HQs, whether or not nature and extent have been sufficiently defined, or how additional lines of evidence such as the use of food chain models that rely on site-specific measurement of PFAS in plant or animal tissue might affect findings and affect management decisions.

1

This page intentionally left blank.

## 6.0 REFERENCES

- 1  
2 ABB Environmental Services, Inc. (ABB), 1997a. Basewide Surface Water/Sediment OU13 Record of  
3 Decision, Final, Installation Restoration Program, prepared for HAZWRAP, Portland, Maine, 1997.  
4  
5 ABB, 1997b. Basewide Groundwater Operable Unit (OU 12) Remedial Investigation Report, Portland,  
6 9 Maine, December.
- 7 ABB, 1996. Final Operable Unit 4 (OU4) Record of Decision, Former Loring Air Force Base, Limestone,  
8 Maine, September.  
9
- 10 ABB, 1994. Final Landfills 2 and 3 Soil/Source Control Operable Unit 2 (OU2) Record of Decision, Former  
11 Loring Air Force Base, Limestone, Maine, September.  
12
- 13 Amec Foster Wheeler, 2015. Final Perfluorinated Compounds Preliminary Assessment (PA): Former  
14 Loring Air Force Base, Limestone, Maine, December.
- 15 AFCEC, 2011. Air Force Civil Engineering Center (AFCEC), 2011. "Former Loring Air Force Base  
16 Community Relations Plan, Appendix I."
- 17 Ankley, G.T., P. Cureton, R.A. Hoke, et al. 2020. Assessing the Ecological Risks of Per- and Polyfluoroalkyl  
18 Substances: Current State-of-the Science and a Proposed Path Forward. *Environmental Toxicology  
19 and Chemistry* 40(3): 564–605.  
20
- 21 Aptim, 2020. Final Five-Year Review Report (2015-2020) Former Loring Air Force Base, Limestone Maine,  
22 APTIM-PL-01045, September 25, 248 pages.
- 23 ATSDR, 2015. ToxFAQs for perfluoroalkyls. Atlanta, GA [updated: 2017 March 31:  
24 <http://www.atsdr.cdc.gov/toxfaqs/tf.asp?id=1116&tid=237>].
- 25 ATSDR, 2006. Health Consultation: Contaminant Accumulation Potential in Plants and Animals Used by  
26 the Aroostook Band of Micmac Indians at the Former Loring Air Force Base. September 30, 2006.
- 27 DERP (Defense Environmental Restoration Program). 2018. *Defense Environmental Restoration Program  
28 (DERP) Management*, Department of Defense Manual. Number 4715.20 Incorporating Change 1.  
29 August 31.
- 30 Gobas, F., B. Kelly, and J. Kim, 2020. *A Framework for Assessing Bioaccumulation and Exposure Risks or  
31 Per- and Polyfluoroalkyl Substances in Threatened and Endangered Species on Aqueous Film  
32 Forming Foam (AFFF) Impacted Sites*. Department of Defense Strategic Environmental Research and  
33 Development Program (SERDP) Project ER18-1502. January.
- 34 Grippo, M., J. Hayse, I. Hlohowskyj, and K. Picel. 2021. Derivation of PFAS Ecological Screening Values.  
35 Argonne National Laboratory. September.  
36
- 37 Harper, B. and Ranco, D. Wabanaki Traditional Cultural Lifeways Exposure Scenario. July 9, 2009. [URL:  
38 <https://www.epa.gov/sites/default/files/2015-08/documents/ditca.pdf>]

- 1 HLA, 1999. Operable Unit 12 Record of Decision, Installation Restoration Program, Loring Air Force Base,  
2 prepared for HAZWRAP, Portland, Maine, September.  
3
- 4 HLA, 1998. No Further CERCLA Action for Sites Within Operable Units 3, 5, 10, and 11 Record of  
5 Decision, Installation Restoration Program, Loring Air Force Base, prepared for HAZWRAP,  
6 Portland, Maine, July.
- 7 New Hampshire Department of Health and Human Services (NH DHHS), 2015. New Hampshire  
8 perfluorochemicals (PFCs) testing program. Concord, NH [updated 2016 June 1; accessed 2017 May  
9 16]. Available from: <http://www.dhhs.nh.gov/dphs/documents/expanded-peaseprotocol.pdf>.
- 10 Naval Research Laboratory (NRL), 2015. Aqueous film-forming foam. [updated 2010 February 1; accessed  
11 2017 May 16]. Available from: [http://www.nrl.navy.mil/accomplishments/materials/aqueous-film-](http://www.nrl.navy.mil/accomplishments/materials/aqueous-film-foam)  
12 [foam](http://www.nrl.navy.mil/accomplishments/materials/aqueous-film-foam).
- 13 Prevedouros K, Cousins IT, Buck RC, Korzeniowski SH, 2006. Sources, fate and transport of  
14 perfluorocarboxylates. *Environ Sci Technol* 40(1):32–44.
- 15 TSERAWG (Tri-Services Environmental Risk Assessment Work Group). 2008. A guide to Screening Level  
16 Ecological Risk Assessment. TSERAWG TG-090801. September.  
17
- 18 USACE. Tri-Service Remedial Project Manger's Handbook for Ecological Risk Assessment. February 24.  
19
- 20 USAF. 2020. Air Force Instruction 32-7020. Environmental Restoration Program. March 12.  
21
- 22 USAF, 2018. Operable Unit (OU) 12 Record of Decision Amendment for Vapor Intrusion, Former Loring  
23 Air Force Base, Limestone, Final, December.
- 24 USAF, 2012. US Air Force, Interim Air Force Guidance on Sampling and Response Action for Perfluorinated  
25 Compounds at Active and BRAC Installations, August 27.
- 26 USEPA, 2022. Software for Calculating Upper Confidence Limits. ProUCL Version 5.2 Technical Support  
27 Center for Monitoring and Site Characterization. [https://www.epa.gov/land-research/proucl-](https://www.epa.gov/land-research/proucl-software)  
28 [software](https://www.epa.gov/land-research/proucl-software).
- 29 USEPA, 2001. *The Role of Screening-Level Risk Assessments and Refining Contaminants of Concern in*  
30 *Baseline Ecological Risk Assessments, ECO Update*. EPA 540/F-01/014. June.
- 31 USEPA, 1998. Guidance for Ecological Risk Assessment. EPA/620/R-95/002F. April.
- 32 USEPA, 2015. Determination of the Biologically Relevant Sampling Depth for Terrestrial and Aquatic  
33 Ecological Risk Assessments. EPA-600-R-15-176, October.
- 34 USEPA, 1997. *Ecological Risk Assessment Guidance for Superfund (ERAGS): Process for Designing and*  
35 *Conducting Ecological Risk Assessments*. EPA-540-R-97-006. June.
- 36 USEPA, 1988. Guidance for Conducting Remedial Investigations and Feasibility Studies Under CERCLA,  
37 Office of Emergency and Remedial Response, EPA 540/G-89/004 (interim final), Washington, D.C.,  
38 October 1988.

- 1 Wood, 2022. Remedial Investigation Work Plan Per- and Polyfluoroalkyl Substance Response, Former
- 2 Loring Air Force Base, Limestone, Maine. Final. April.
- 3 Wood, 2018., Site Inspection Report for Aqueous Film-Forming Foam Areas at Former Loring Air Force
- 4 Base, Maine, Final, December.
- 5

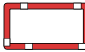


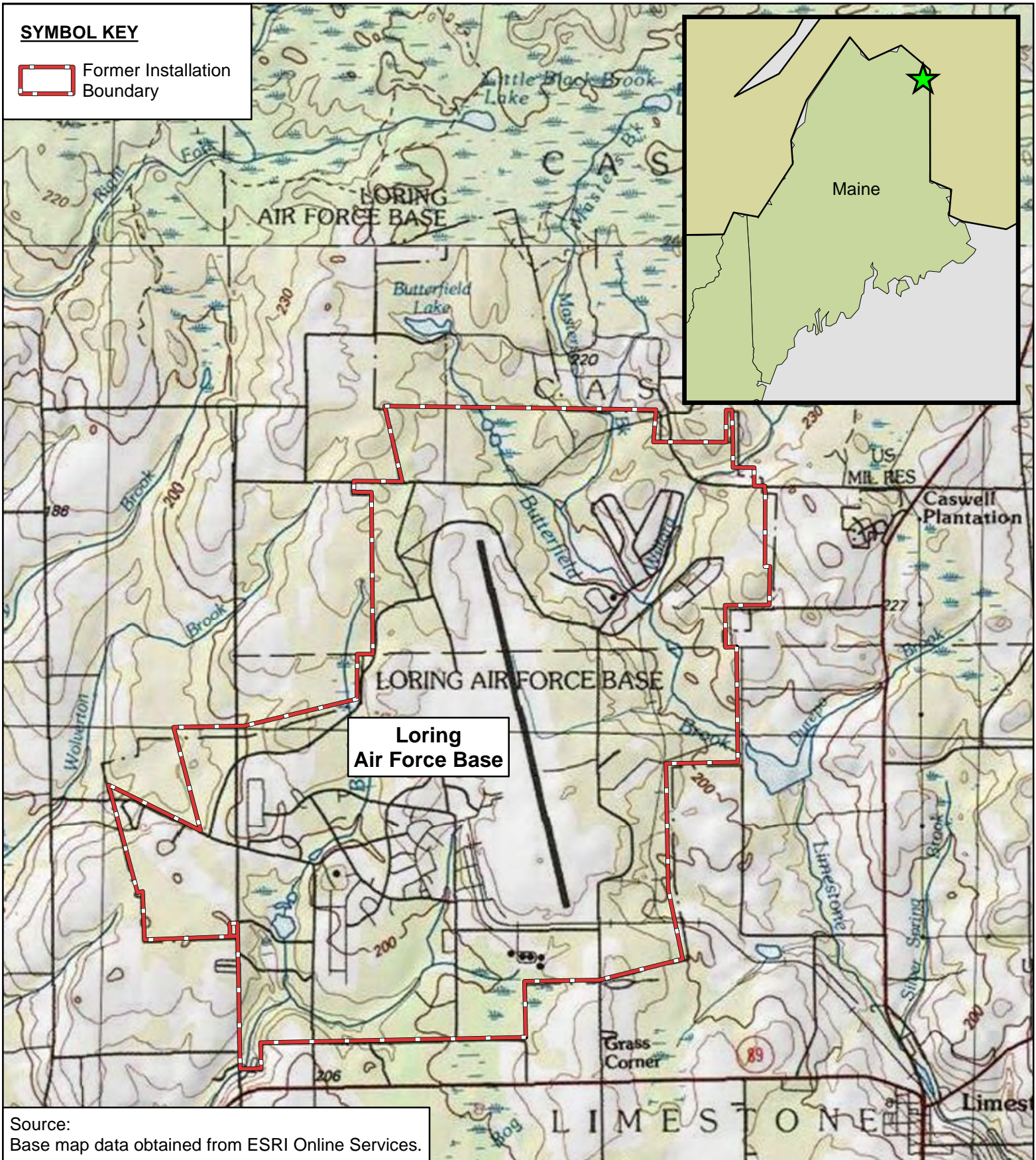






**SYMBOL KEY**

 Former Installation Boundary



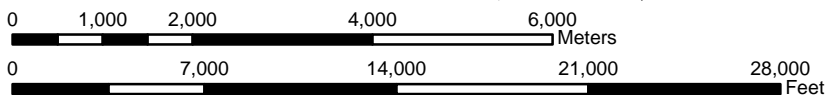
Source:  
Base map data obtained from ESRI Online Services.

**Air Force Civil Engineer Center**  
2261 Hughes Ave., Suite 163  
JBSA Lackland, TX 78236

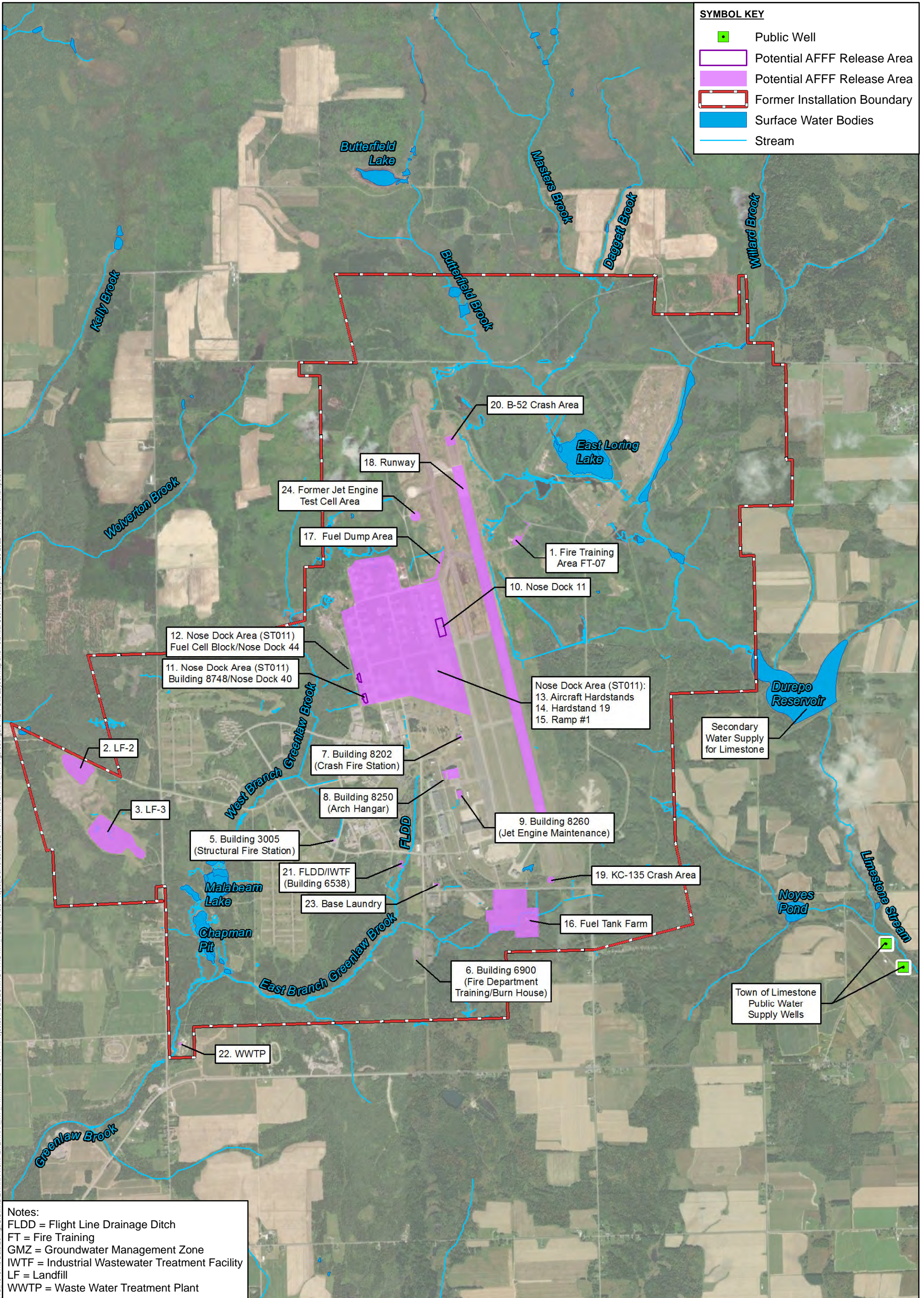


**Figure 1.0-1**  
**Site Location Map**

Ecological Risk Assessment Work Plan  
Former Loring Air Force Base, Limestone, ME

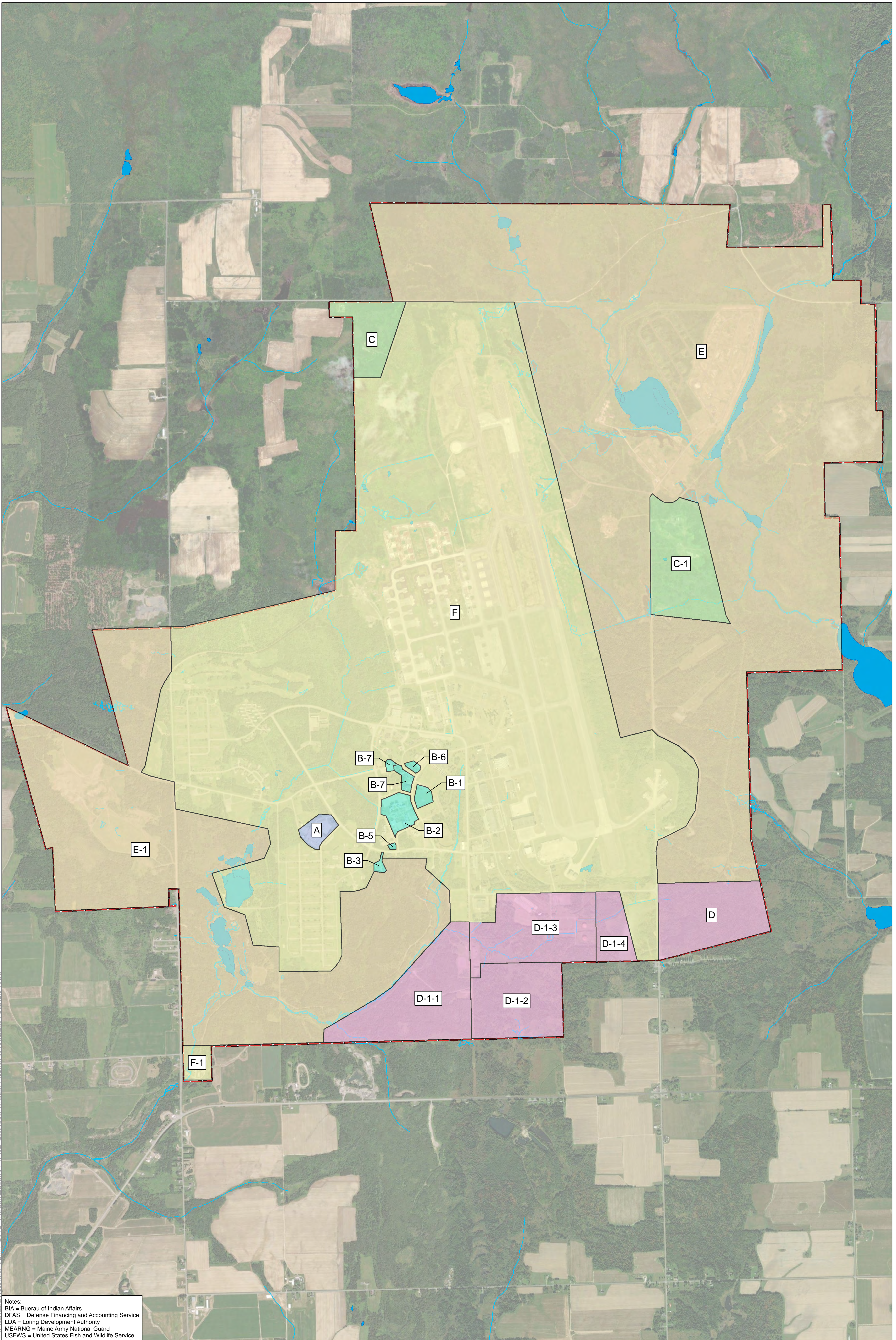


04/25/2022	BHRA_WP_Install_Loc
PROJ: 775361701	Drawn: BRP




<p><b>Air Force Civil Engineer Center</b>          2261 Hughes Ave., Suite 163          JBSA Lackland, TX 78236</p>	<p><b>Figure 1.2-1</b>  <b>Site Layout Map and Potential Source Areas</b></p> <p>Ecological Risk Assessment Work Plan Work Plan          Former Loring Air Force Base, Limestone, ME</p>		
	<p>0 400 800 1,600 2,400 3,200          0 1,400 2,800 5,600 8,400 11,200</p> <p>Meters          Feet</p>	<p><b>NOTES:</b>          -Aerial Imagery obtained through ESRI Online Services</p>	<p>04/25/2022          Drawn: BRP</p>


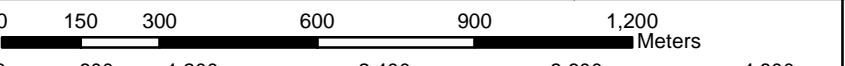
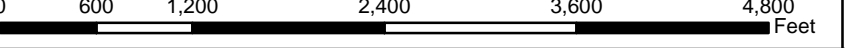
Document: P:\Projects\AFCEE\LORING PFAS R11 TO 1048\4.0 Data\Loring\_GIS\MXD\BHHRA WorkPlan\BHHRA\_WP\_11x17P.mxd PDF: P:\Projects\AFCEE\LORING PFAS R11 TO 1048\6.0 Project\_Deliverables\2 Work Plans\BHHRA\_WP\Figures\Figure 1.2-1 Site Layout Map and Potential Source Areas.pdf 04/25/2022 11:36 AM brian.peters



Notes:  
 BIA = Bureau of Indian Affairs  
 DFAS = Defense Financing and Accounting Service  
 LDA = Loring Development Authority  
 MEARNG = Maine Army National Guard  
 USFWS = United States Fish and Wildlife Service

SYMBOL KEY		
Approximate Parcel Boundaries:		
DFAS Parcel (A)	BIA Parcels (D, D-1)	Stream
Job Corps Parcels (B-1, 2, 3 and B-5, 6, 7)	USFWS Parcels (E, E-1)	Surface Water Bodies
MEARNG Parcels (C, C-1)	LDA Parcels (F, F-1)	Former Installation Boundary


**Air Force Civil Engineer Center**  
 2261 Hughes Ave., Suite 163  
 JBSA Lackland, TX 78236

 N  
 0 150 300 600 900 1,200 Meters  
 0 600 1,200 2,400 3,600 4,800 Feet

**Figure 1.2-2**  
**Parcel Boundaries**  
 Ecological Risk Assessment Work Plan  
 Former Loring Air Force Base, Limestone, ME

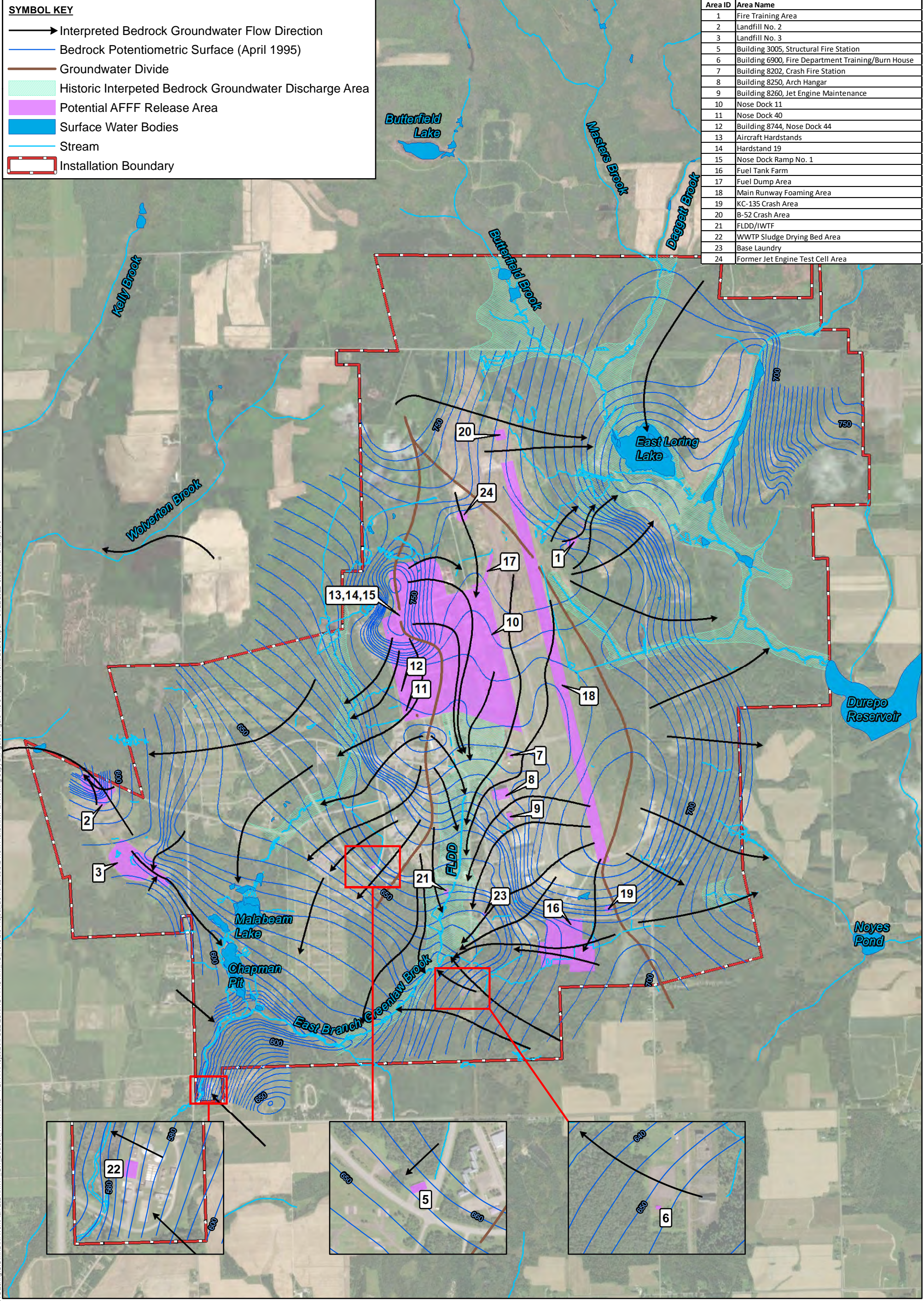
NOTES:  
 Aerial Imagery obtained through ESRI Online

2022-04-25 BHHRA\_WP\_22x34P  
 Drawn: BRP PROJ: 775361701

**SYMBOL KEY**

- Interpreted Bedrock Groundwater Flow Direction
- Bedrock Potentiometric Surface (April 1995)
- Groundwater Divide
- Historic Interpreted Bedrock Groundwater Discharge Area
- Potential AFFF Release Area
- Surface Water Bodies
- Stream
- Installation Boundary

Area ID	Area Name
1	Fire Training Area
2	Landfill No. 2
3	Landfill No. 3
5	Building 3005, Structural Fire Station
6	Building 6900, Fire Department Training/Burn House
7	Building 8202, Crash Fire Station
8	Building 8250, Arch Hangar
9	Building 8260, Jet Engine Maintenance
10	Nose Dock 11
11	Nose Dock 40
12	Building 8744, Nose Dock 44
13	Aircraft Hardstands
14	Hardstand 19
15	Nose Dock Ramp No. 1
16	Fuel Tank Farm
17	Fuel Dump Area
18	Main Runway Foaming Area
19	KC-135 Crash Area
20	B-52 Crash Area
21	FLDD/IWTF
22	WWTP Sludge Drying Bed Area
23	Base Laundry
24	Former Jet Engine Test Cell Area



Document: C:\Users\brp\Documents\Projects\AFCCE\LORING PFAS R11 TO 104816 0 Project\Deliverables\6.2 Work Plans\RIWP\11x17P.mxd  
 Date: 04/22/2022 8:03 AM  
 User: brp

**Air Force Civil Engineer Center**

2261 Hughes Ave., Suite 163  
JBSA Lackland, TX 78236

**Figure 1.2-3**  
**Potentiometric Map of Bedrock**

Ecological Risk Assessment Work Plan  
Former Loring Air Force Base, Limestone, ME

12/29/2021 Rev: RIWP\_GW\_Bedrock\_11x17P

Drawn: BRP Chk: PROJ: 775361701

0 400 800 1,600 2,400 3,200 Meters

0 1,300 2,600 5,200 7,800 10,400 Feet

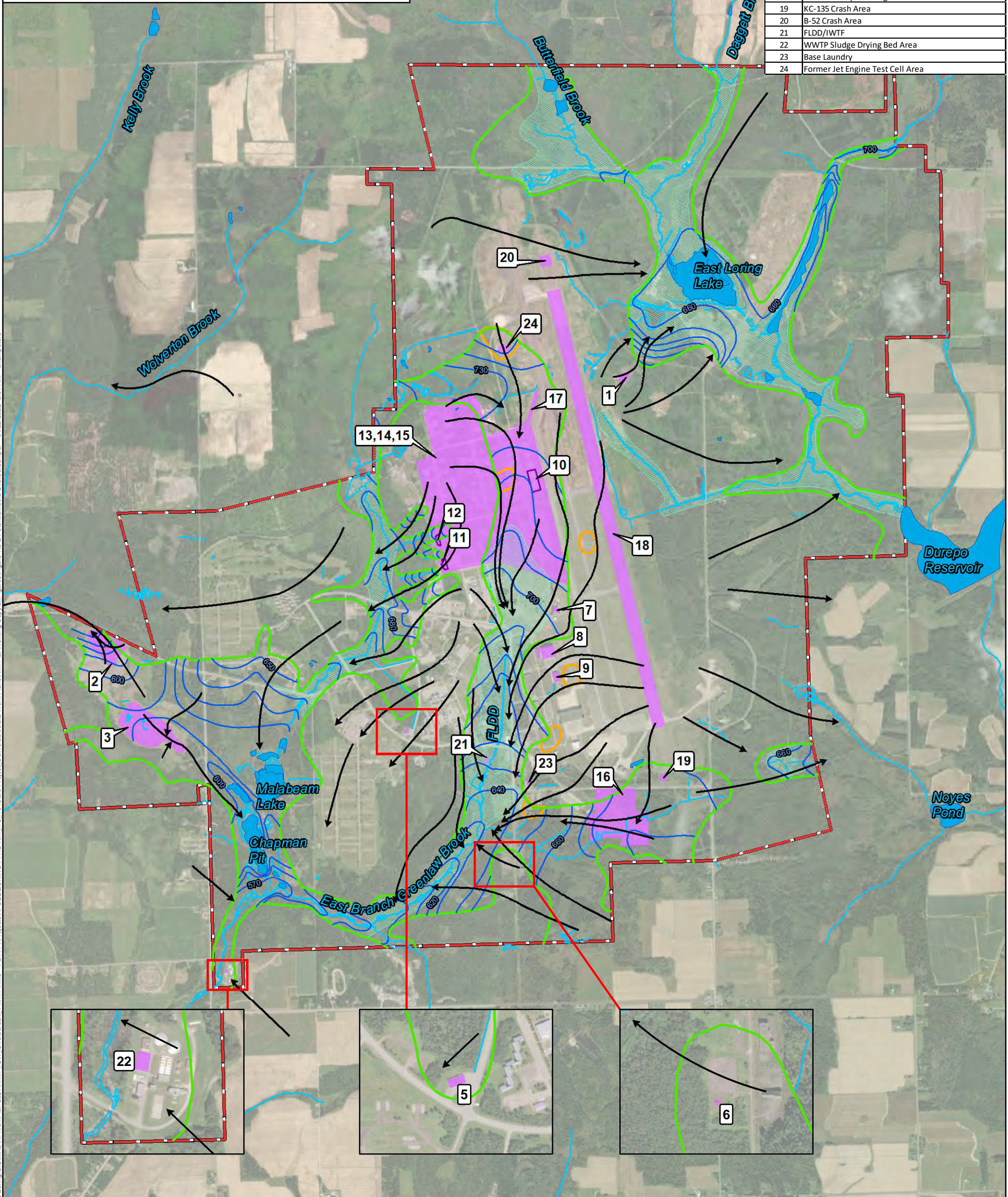
NOTES:

- Aerial Imagery obtained through ESRI Online Services

**SYMBOL KEY**

- Interpreted Bedrock Groundwater Flow Direction
- Overburden Potentiometric Surface (April 1995)
- Historic Saturated Overburden Groundwater
- Historic Perched Overburden Groundwater
- Historic Interpreted Bedrock Groundwater Discharge Area
- Potential AFFF Release Area
- Surface Water Bodies
- Stream
- Installation Boundary

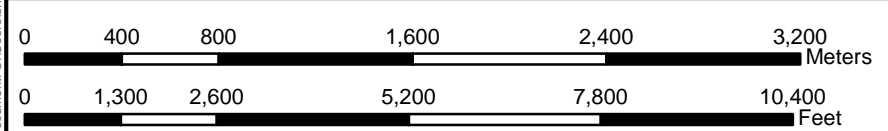
Area ID	Area Name
1	Fire Training Area
2	Landfill No. 2
3	Landfill No. 3
5	Building 3005, Structural Fire Station
6	Building 6900, Fire Department Training/Burn House
7	Building 8202, Crash Fire Station
8	Building 8250, Arch Hangar
9	Building 8260, Jet Engine Maintenance
10	Nose Dock 11
11	Nose Dock 40
12	Building 8744, Nose Dock 44
13	Aircraft Hardstands
14	Hardstand 19
15	Nose Dock Ramp No. 1
16	Fuel Tank Farm
17	Fuel Dump Area
18	Main Runway Foaming Area
19	KC-135 Crash Area
20	B-52 Crash Area
21	FLDD/IWTF
22	WWTP Sludge Drying Bed Area
23	Base Laundry
24	Former Jet Engine Test Cell Area



**Air Force Civil Engineer Center**  
 2261 Hughes Ave., Suite 163  
 JBSA Lackland, TX 78236

**Figure 1.2-4**  
**Potentiometric Map of Overburden**

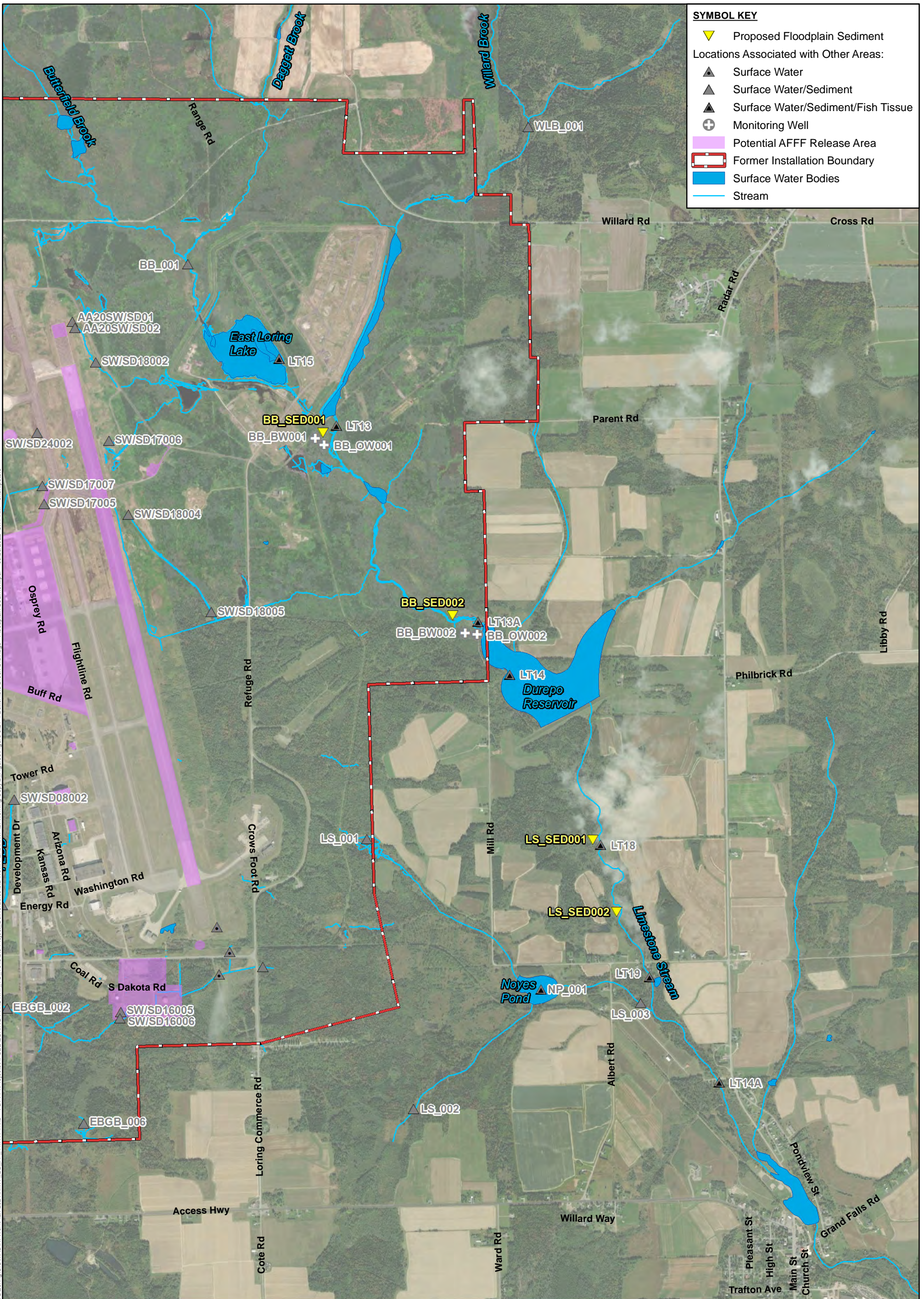
Ecological Risk Assessment Work Plan  
 Former Loring Air Force Base, Limestone, ME



NOTES:  
 -Aerial Imagery obtained through ESRI Online Services

04/22/2022	Rev:	RIWP_GW_Overburden_11x17P
Drawn: BRP	Chk:	PROJ: 775361701

Document: C:\Users\brian.peterson\Desktop\PROJECTS\Loring\GIS\MXD\RIWP\WorkPlan\_2021\RIWP\_GW\_Overburden\_11x17P.mxd PDF: P:\Projects\AFCEE\LORING PFAS RI1 TO 1048\6.0 Project Deliverables\6.2 Work Plans\RIWP\1 Working Copy\Figures\Figures 1-3-2 Potentiometric Overburden.pdf 04/22/2022 8:01 AM brian.peterson



**SYMBOL KEY**

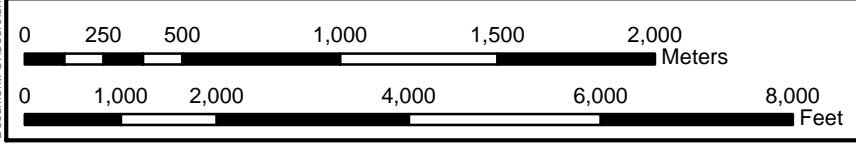
- ▼ Proposed Floodplain Sediment
- Locations Associated with Other Areas:
- ▲ Surface Water
- ▲ Surface Water/Sediment
- ▲ Surface Water/Sediment/Fish Tissue
- + Monitoring Well
- Potential AFFF Release Area
- Former Installation Boundary
- Surface Water Bodies
- Stream

Document: C:\Users\brian.peters\Desktop\PROJECTS\Loring\GIS\MXDR\WorkPlan\_2021\RIWP\_BB\_FP\_11x17P.mxd PDF: P:\Projects\AFCEE\LORING PEAS RV1 TO 1048\6.0 Project\_Deliverables\6.2 Work Plans\RIWP\Working Copy\Figures\Figure 5.21-4 Butterfield Brook Drainage - Floodplain Sediment.pdf 03/29/2022 8:11 AM brian.peters

**Air Force Civil Engineer Center**  
 2261 Hughes Ave., Suite 163  
 JBSA Lackland, TX 78236

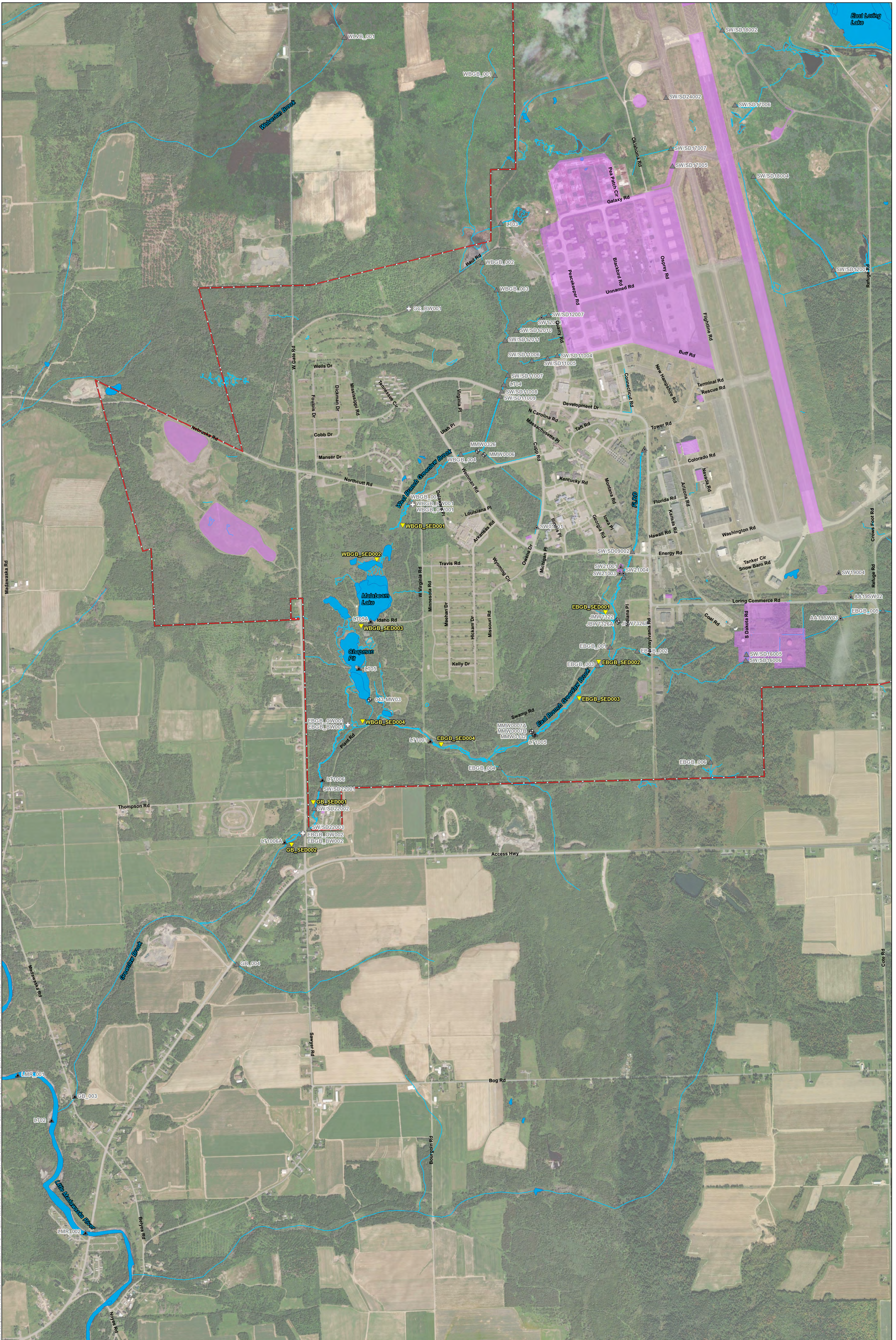
**Figure 1.2-5**  
**Butterfield Brook Drainage - Proposed Floodplain Sediment Sample Locations**

Ecological Risk Assessment Work Plan  
 Former Loring Air Force Base, Limestone, ME



**NOTES:**  
 -Aerial Imagery obtained through ESRI Online Services

03/29/2022	Rev:	RIWP_BB_FP_11x17P
Drawn: BRP	Chk:	PROJ: 775361701

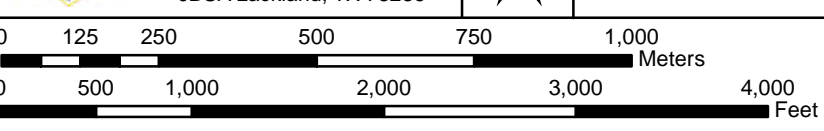


SYMBOL KEY			
▼	Proposed Floodplain Sediment	▲	Surface Water/Sediment
▲	Surface Water/Sediment/Fish Tissue	▲	Surface Water Bodies
▲	Surface Water	⊕	Existing Well
		■	Potential AFFF Release Area
		—	Former Installation Boundary
		—	Stream

**Air Force Civil Engineer Center**  
 2261 Hughes Ave., Suite 163  
 JBSA Lackland, TX 78236

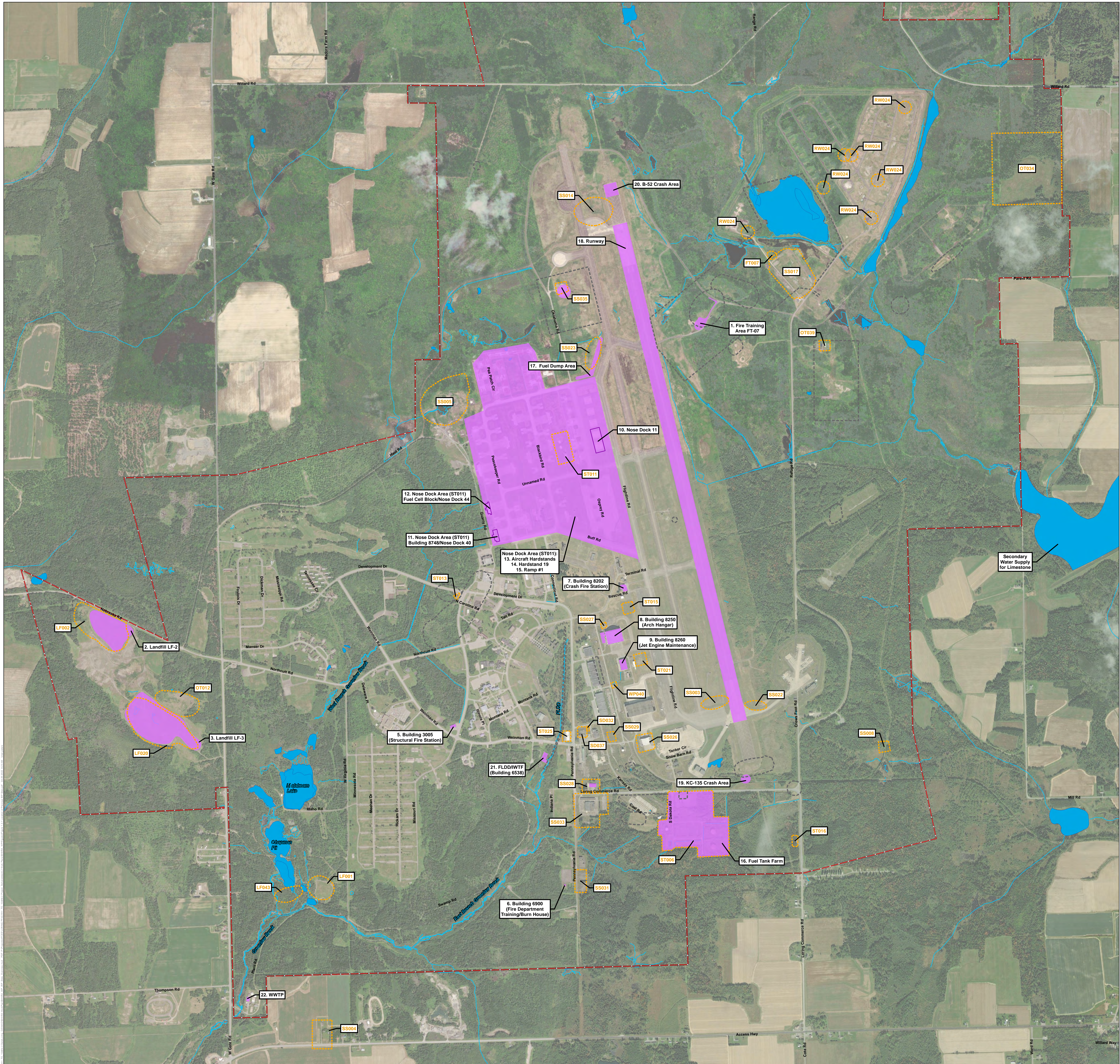


**Figure 1.2-6**  
**Greenlaw Brook Drainage – Proposed Floodplain Sediment Sample Locations**  
 Ecological Risk Assessment Work Plan  
 Former Loring Air Force Base, Limestone, ME



NOTES:  
 Aerial Imagery obtained through ESRI Online Services

3/29/2022 RWP\_GB\_FP\_22x34P  
 Drawn: BRP PROJ: 775361701



**SYMBOL KEY**

<span style="border: 1px dashed orange; padding: 2px;"> </span>	IRP Site - Found on Table		Stream
<span style="border: 1px dashed purple; padding: 2px;"> </span>	IRP Site - Not Found on Table		Surface Water Bodies
	Potential AFFF Release Area		Installation Boundary
	Potential AFFF Release Area		

Note: IRP = Air Force Installation Restoration Program

**Air Force Civil Engineer Center**  
2261 Hughes Ave., Suite 163  
JBSA Lackland, TX 78236

N

**Figure 1.3-1  
Location of Previous IRP Sites**

Ecological Risk Assessment Work Plan  
Former Loring Air Force Base, Limestone, ME

0 100 200 400 600 800  
0 400 800 1,600 2,400 3,200  
Meters Feet

NOTES:  
Aerial imagery obtained through ESRI Online Services

2022-04-25  
Drawn: BRP  
PROJ: 775361701



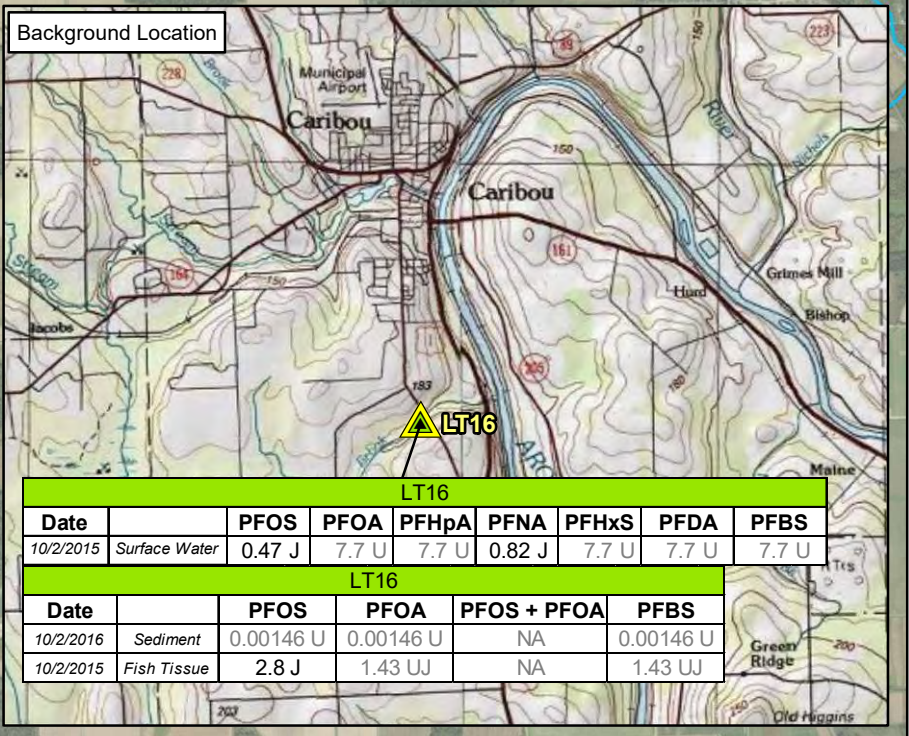
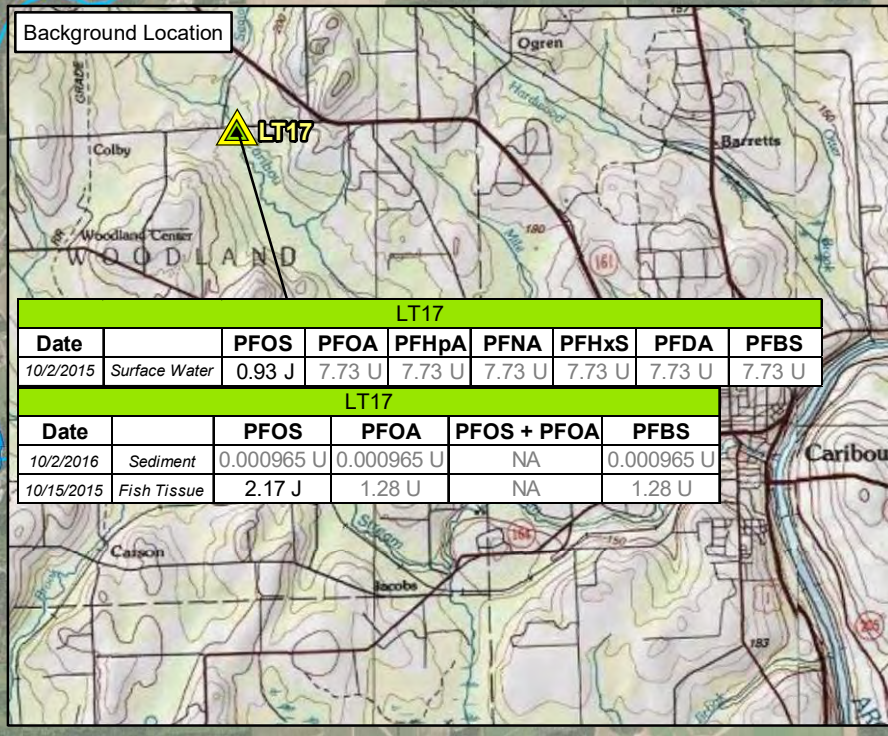
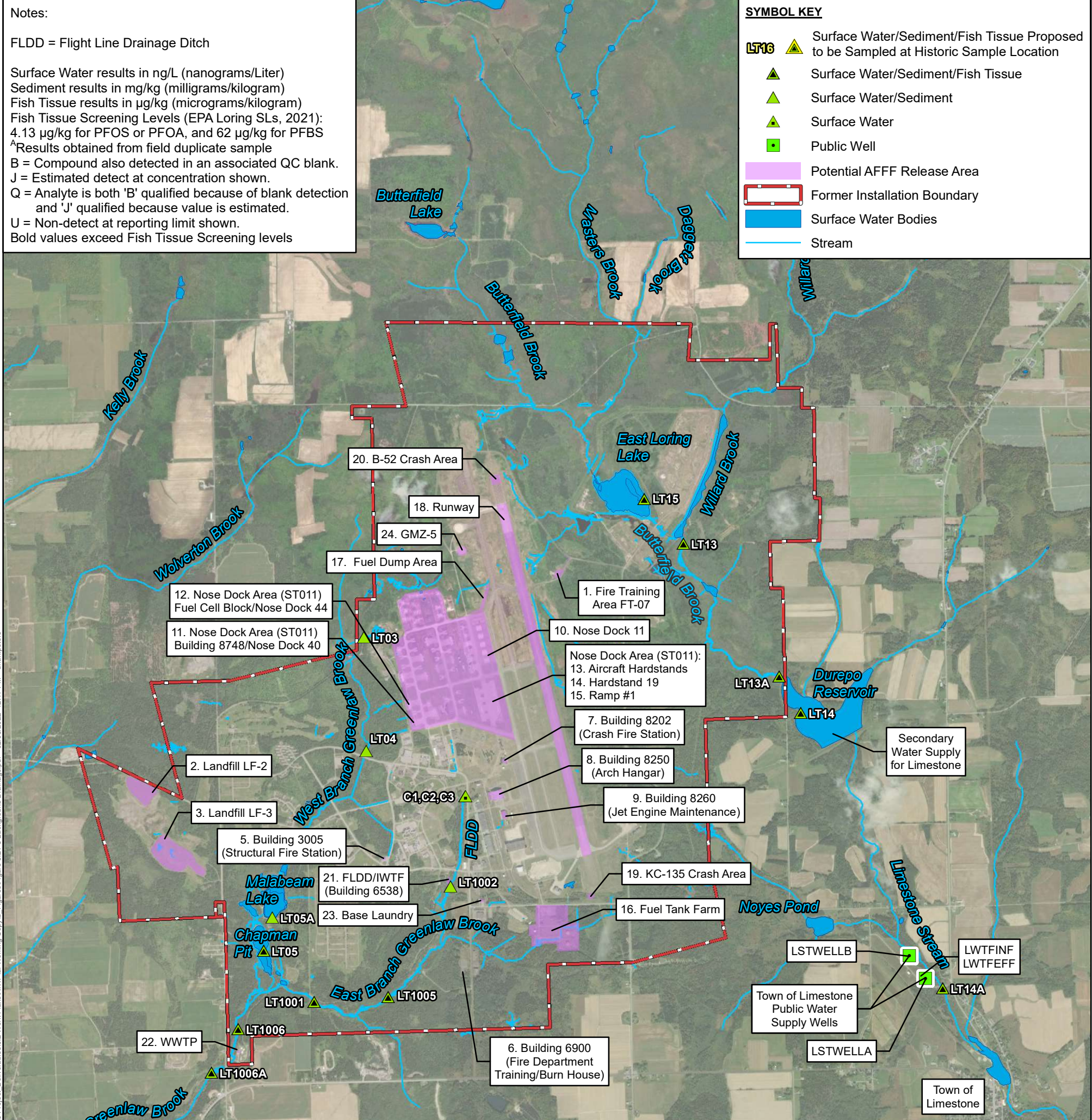
Notes:

FLDD = Flight Line Drainage Ditch

Surface Water results in ng/L (nanograms/Liter)  
 Sediment results in mg/kg (milligrams/kilogram)  
 Fish Tissue results in µg/kg (micrograms/kilogram)  
 Fish Tissue Screening Levels (EPA Loring SLs, 2021):  
 4.13 µg/kg for PFOS or PFOA, and 62 µg/kg for PFBS  
 ^Results obtained from field duplicate sample  
 B = Compound also detected in an associated QC blank.  
 J = Estimated detect at concentration shown.  
 Q = Analyte is both 'B' qualified because of blank detection and 'J' qualified because value is estimated.  
 U = Non-detect at reporting limit shown.  
 Bold values exceed Fish Tissue Screening levels

**SYMBOL KEY**

- LT16** Surface Water/Sediment/Fish Tissue Proposed to be Sampled at Historic Sample Location
- Surface Water/Sediment/Fish Tissue
- Surface Water/Sediment
- Surface Water
- Public Well
- Potential AFFF Release Area
- Former Installation Boundary
- Surface Water Bodies
- Stream



**Air Force Civil Engineer Center**  
 2261 Hughes Ave., Suite 163  
 JBSA Lackland, TX 78236

**Figure 3.1-1**  
**Background Drainage – Proposed Sample Locations**

Ecological Risk Assessment Work Plan  
 Former Loring Air Force Base, Limestone, ME

02/03/2022 Rev: R1WP\_Bkg\_ChemBoxes

Drawn: BRP Chk: PROJ: 775361701

0 500 1,000 2,000 3,000 4,000 Meters

0 1,750 3,500 7,000 10,500 14,000 Feet

NOTES:

-Aerial Imagery obtained through ESRI Online Services

Document: C:\Users\brinan.petters\Desktop\PROJECTS\Loring\ORING\PFAS Riv1 TO 104816 0 Project\_Deliverables\6 2 Work Plans\R1WP\1a Working Copy\Figures\Figure 5.21-3 Background Drainage.pdf - 02/03/2022 12:47 PM - brinan.petters





**Table 2.1-1  
SLERA Assessment & Measurement Endpoints**

**Ecological Risk Assessment Work Plan  
Former Loring Air Force Base  
Limestone, Maine**

Assessment Endpoint	Measurement Endpoint
<b>Terrestrial Exposure Areas</b>	
1. Protection and maintenance of populations of terrestrial plants typical to the area.	a. Compare chemical concentrations measured in soil to screening benchmarks protective of terrestrial plants.
2. Protection and maintenance of the soil invertebrate community.	a. Compare chemical concentrations measured in soil to screening benchmarks protective of soil invertebrates.
3. Protection and maintenance of populations of herbivorous, invertivorous, and carnivorous birds typical to the area.	a. Compare chemical concentrations measured in soil to screening benchmarks protective of dietary and incidental soil ingestion.
4. Protection and maintenance of populations of herbivorous, invertivorous, and carnivorous mammals typical to the area.	a. Compare chemical concentrations measured in soil to screening benchmarks protective of dietary and incidental soil ingestion.
<b>Aquatic Exposure Areas</b>	
5. Protection and maintenance of the water column aquatic community (plants, invertebrates, fish) typical to the area.	a. Compare chemical concentrations measured in surface water to screening benchmarks protective of aquatic life. b. If groundwater exposure pathway is found to be complete, compare chemical concentrations measured in groundwater to screening benchmarks protective of aquatic life.
6. Protection and maintenance of the benthic community typical to the area.	a. Compare chemical concentrations measured in sediment pore water to screening benchmarks protective of aquatic life.
7. Protection and maintenance of populations of herbivorous, piscivorous, invertivorous, and omnivorous birds typical to the area.	a. Compare chemical concentrations measured in surface water to screening benchmarks protective of dietary and incidental surface water ingestion.
8. Protection and maintenance of populations of herbivorous, invertivorous, piscivorous, and omnivorous mammals typical to the area.	a. Compare chemical concentrations measured in surface water to screening benchmarks protective of dietary and incidental surface water ingestion.



**Table 2.3-1  
No Observed Effect Concentration Screening Benchmarks**

**Ecological Risk Assessment Work Plan  
Former Loring Air Force Base  
Limestone, Maine**

Analyte (mg/kg)	Soil Benchmarks by Receptor				Surface Water/Pore Water Benchmarks by Receptor		
					Freshwater		
	Terrestrial Plants (mg/kg)	Soil Invertebrates (mg/kg)	Terrestrial Birds (mg/kg)	Terrestrial Mammals (mg/kg)	Aquatic Life (µg/L)	Aquatic- dependent Birds (µg/L)	Aquatic- dependent Mammals (µg/L)
PFBA	-	-	-	2.98	64.6	-	8,370
PFHxA	-	-	-	6.20	28.8	-	2,210
PFOA	79.5	22.4	-	3.84	307	-	1,580
PFNA	-	10	-	0.0242	16.4	-	2.08
PFDA	-	-	-	0.0677	2.94	-	0.66
PFBS	-	100	15.8	0.817	400	88,600	5,710
PFHxS	-	10	-	0.0028	65.3	-	5.50
PFOS	40.2	48.1	0.0386	0.0087	22.6	2.57	0.117

**Notes:**

Source: Grippa et al. (2021) Table ES-3

µg/L = micrograms per Liter

mg/kg = milligrams per kilogram

PFBA = Perfluorobutanoic acid

PFHxA = Perfluorohexanoic acid

PFOA = Perfluorooctanoic acid

PFNA = Perfluorononanoic acid

PFDA = Perfluorodecanoic acid

PFBS = Perfluorobutanesulfonic acid

PFHxS = Perfluorohexanesulfonic acid

PFOS = Perfluorooctanesulfonic acid