

Benn, Tom

From: Benn, Tom
Sent: Tuesday, July 22, 2008 9:29 AM
To: Lavallee, Fred C
Cc: Beane, John E; Wright, David W; Seel, George J; Parker, Barbara T; Blanchard, Peter J
Subject: Winthrop Commerce Center

Fred, et al:

Good morning. The letter has not been written...I have had a meeting with the partners on Wednesday. I am awaiting some information from the Bureau of Purchases regarding how the partners buy the existing boom...They want to keep the booms (the three 50 foot sections) of it in Mill Stream throughout the summer...basically BofP has rules and bidding requirements that relate to our selling of state property.

I am just returning from vacation, so I'll be getting right on it. Thanks for the reminder. And the partners (all four) know that the lagoons cannot be filled. I will make certain that our letter states that issue clearly as well. That's it for now. The partners are also aware that the site clean-up expenses are over \$1,000,000.00. Take care.

Tommy

From: Lavallee, Fred C
Sent: Tuesday, July 22, 2008 8:19 AM
To: Benn, Tom
Cc: Wright, David W; Seel, George J; Blanchard, Peter J; Beane, John E
Subject: RE: Winthrop Commerce Center

Has the letter to the partners gone out yet? If so, what response?

*Fred Lavallee, P.E.
 Division of Technical Services
 Bureau of Remediation & Waste Management
 Maine Department of Environmental Protection
 Phone: (207) 287-7677
 Fax: (207) 287-7826
 fred.c.lavallee@maine.gov*

From: Wright, David W
Sent: Friday, June 27, 2008 12:13 PM
To: Seel, George J; Benn, Tom; Lavallee, Fred C; Blanchard, Peter J; Beane, John E
Subject: RE: Winthrop Commerce Center

Attached are my meeting notes...

From: Seel, George J
Sent: Thursday, June 19, 2008 2:55 PM
To: Wright, David W; Benn, Tom; Lavallee, Fred C; Blanchard, Peter J; Beane, John E
Subject: FW: Winthrop Commerce Center

My sense from the e-mail chain below and an exchange with Peter is that a meeting to discuss whether maintaining a boom on the stream at all now is even effective is needed and timely. Whether or not to keep the

7/22/2008

boom in place is the first question that requires an answer (i.e. what is the boom accomplishing?). It doesn't sound like much more than a feel good measure.

George

From: Benn, Tom
Sent: Thursday, June 19, 2008 10:24 AM
To: Wright, David W; Seel, George J
Subject: FW: Winthrop Commerce Center

Dave and George:

Problem here is we have no money for boom or hiring a contractor to free up Peter from baby-sitting this boom. My recommendation is that we keep the current diaper in place this year. I don't think meeting about it more really helps any of us. I wanted to just hit base with both of you.

Tom

From: Benn, Tom
Sent: Thursday, June 19, 2008 10:03 AM
To: Lavallee, Fred C; Blanchard, Peter J; Beane, John E
Subject: RE: Winthrop Commerce Center

THX for the input, guys. Regarding Winthrop discharges to the Mill Stream, keeping the stream boom through the summer creates difficulty for response should they need some boom for another discharge clean-up effort. Hiring someone out to deal with it creates cash-flow issues. Peter and I have spoken about that somewhat. Problem with dedicated boom is we have no money for that either...I personally want to see the boom remain this year.

I'm not sure if meeting about this is real helpful, but that is just my perspective. As always, I'm open for more thoughts.

Tom

From: Lavallee, Fred C
Sent: Monday, June 16, 2008 1:39 PM
To: Blanchard, Peter J; Beane, John E; Benn, Tom
Subject: RE: Winthrop Commerce Center

I agree with John that the PAH profile from the foam sample is closer to what we saw in the lake sediment than the neat product: all four- five-, and six-ring PAHs, rather than the lighter two- and three-rings. But we still ought to get together again, because regardless of the source, the boom is catching product. I think I'd feel better if it stayed through the summer and we took it out in the fall – would probably make the lake association more confident to see it in place for one full season too.

The first file shows the PAH profiles from 2007. The second is the foam. See what you think.

*Fred Lavallee, P.E.
Division of Technical Services
Bureau of Remediation & Waste Management
Maine Department of Environmental Protection
Phone: (207) 287-7677
Fax: (207) 287-7826
fred.c.lavallee@maine.gov*

From: Blanchard, Peter J

7/22/2008

Sent: Monday, June 16, 2008 12:39 PM
To: Beane, John E; Benn, Tom; Lavallee, Fred C
Subject: RE: Winthrop Commerce Center

So this begs the question, do we continue to boom to collect airfall source PAHs? Do you guys want to get together for a project meeting and discuss our strategy for this site?

Peter

From: Beane, John E
Sent: Monday, June 16, 2008 12:08 PM
To: Blanchard, Peter J
Cc: Benn, Tom; Lavallee, Fred C
Subject: RE: Winthrop Commerce Center

The results of the foam sample from the boom on mill stream look more like the sediments in the lake than like the neat sample of #6 oil from the mill. Neat product was rich in 2 methylnaphthalene, acenaphthene and phenanthrene, but none of these were detected in the foam sample. The bottom sediments were rich in benzo (a) pyrene and benzo (k) fluoranthene, and so was the foam. My guess is that the PAH in the foam and the bottom sediments are mostly from combustion-source airfall rather than from the #6 fuel oil from the mill.

From: Curlett, James
Sent: Monday, June 16, 2008 11:35 AM
To: Blanchard, Peter J
Cc: Beane, John E
Subject: RE: Winthrop Commerce Center

I don't know WHAT is wrong with this folder in the system. It has been done but won't show up for release. Consider this a free one. I am terribly sorry and will work to sort out the problem

James Curlett
Advanced Instrumental Methods Team Leader
State of Maine
Health & Environmental Testing Laboratory
James.Curlett@Maine.gov
207 287 - 2727

From: Blanchard, Peter J
Sent: Monday, June 16, 2008 10:40 AM
To: Curlett, James
Subject: FW: Winthrop Commerce Center

Jim,
Hope things are well with you and at the lab. Could you please check on the status of the sample result noted below?

Peter

From: Beane, John E
Sent: Monday, June 16, 2008 9:09 AM
To: Blanchard, Peter J
Cc: Benn, Tom; Lavallee, Fred C

7/22/2008

Subject: RE: Winthrop Commerce Center

Hi Peter,

I have looked for the results from sample D017810001 several times a week for the past month, and the data haven't been posted.

I communicated with the chemist (Jim Eaton) on 5/20 who said that the analysis was done, and I expected the data to be forthcoming, but they weren't.

As the sampler and the originator of the request for analysis, you may have more leverage than I do to shake this loose from the lab. Good luck.

John

From: Blanchard, Peter J
Sent: Friday, May 02, 2008 4:56 PM
To: Beane, John E
Subject: RE: Winthrop Commerce Center

Hi John,

It is D017810

Peter

From: Beane, John E
Sent: Friday, May 02, 2008 1:38 PM
To: Blanchard, Peter J
Subject: RE: Winthrop Commerce Center

Hi Peter,

If you get a chance could you send me the folder number for the sample?

Thanks,

John

From: Blanchard, Peter J
Sent: Thursday, May 01, 2008 10:25 AM
To: Lavallee, Fred C; Benn, Tom; Beane, John E
Subject: RE: Winthrop Commerce Center

Update on the mill stream boom.

I worked with Tom last Friday 4/25 and we hauled out the boom from the upper part of mill stream. The water was moving too swiftly there for the boom to be effective. The lower segments of boom have been effective at collecting debris and a limited amount of black oil. I have removed approx 22 more bags of debris so far this spring for disposal at Mid Maine Waste incinerator in Auburn. With the heavy rain event from this week I stopped in and checked the stream and boom. No oily debris appears to get by the boom into the lake. So far, so good. I took a sample of the black emulsion and brought to HETL for analysis by 8270 for PAHs per discussion with John. I will forward results as soon as they are available. I was contacted by Sue Neal this week and she also has been monitoring the lake during high water. No black stuff has been observed in the lake.

7/22/2008

From: Lavallee, Fred C
Sent: Friday, April 25, 2008 12:00 PM
To: Benn, Tom
Cc: Blanchard, Peter J; Beane, John E
Subject: Winthrop Commerce Center

Tom –

Per SSTS, we've already crossed \$1 million on this site. Any further expenditures would be subject to cost recovery. Presumably, a demand for payment will go out at some point for the few thousand that's already over the cap.

*Fred Lavallee, P.E.
Division of Technical Services
Bureau of Remediation & Waste Management
Maine Department of Environmental Protection
Phone: (207) 287-7677
Fax: (207) 287-7826
fred.c.lavallee@maine.gov*

Benn, Tom

From: Blanchard, Peter J
Sent: Wednesday, April 09, 2008 6:18 PM
To: Beane, John E; Lavallee, Fred C
Cc: Benn, Tom
Subject: FW: oil into lake

That was me who bagged the debris. I concur with the plan to make frequent checks over the next two weeks, and living in Winthrop am just the guy to do it.

I'll keep everyone posted.
Peter

-----Original Message-----

From: Blanchard, Peter J
Sent: Wednesday, April 09, 2008 6:14 PM
To: 'sue.neal@maine.edu'; Benn, Tom
Subject: RE: oil into lake

Hi Sue & Tom,

Yesterday (Wednesday PM 4/9) I worked for about 4 hours cleaning the winter accumulation of detritus (foam/plastic/trash/and lots of woody litter) from the two booms. I filled 10 trash bags with material. I think in all that debris, there was probably only a couple gallons of oil. I also checked the area near big pipe that drains storm water and did not see any sign of oil. I think the brown stains are probably iron deposits and/or bacteria. Mill stream is flowing very fast and it is impossible to tell what may be discharging from the bedrock. Certainly there is merit in keeping a sharp eye out for any sign of oil. Staging the boom in the lake is not a small undertaking. I have confidence in the removal action that took place last year. I plan to stop frequently over the next two weeks or so on the way home and check the boom for additional accumulation of oil, and Sue, please call my cell phone 446-9892 if you are uneasy about the condition of the boom. I will relay to Tom, and we can move with the boom into the lake if warranted. Believe me, I do not want to have to make a third mobilization onto Annabessacook. ;-)

Sincerely, Peter

-----Original Message-----

From: sue.neal@maine.edu [mailto:sue.neal@maine.edu]
Sent: Wednesday, April 09, 2008 5:32 PM
To: Benn, Tom
Cc: Blanchard, Peter J
Subject: oil into lake

Hi Tom,

I left a message on your phone (287-7662) about 5:20 pm Wednesday. I stopped to check the old mill site and was bothered by the dark stains near the big pipe that drains storm water. So I went to the stream to check the booms. There is a lot of the tanish/brownish mousse (?sp) collected behind the last boom. I went across the road and did not see any shean or any black tarry oil.

Obviously this is a BIG concern for us. Do we need to get a large boom into the lake again before we have a rain storm?

PLEASE call me tomorrow, Thursday. I will be on my way to New Hampshire but you can reach me on my cell phone. My numbers are:

242-0453, cell phone. 377-6959, home phone. If you are unable to call me Thursday please call me on Friday, before the rain arrives for the weekend.

Sue Neal
Annabessacook Lake Association

Winthrop Commerce Center
June 27, 2008

Attending: Tom Benn, David Wright, Pete Blanchard, Fred Lavallee

RE: Continued remedial activities at Winthrop Commerce Center – Boom maintenance

I. Situation

- A. Boom downstream of the mill
- B. April – Pete was cleaning out every week – moosey stuff
- C. Now, brush, solid waste, etc & some oil globules collecting on boom, but only minor amounts of oil
- D. Likely will only have potential for significant oil during summer if there is a big storm to flush out of soil – but in that case may flush past boom
- E. Tom: seeing some oil from bottom of the stream & bank being released from the commerce center
 - 1. Soils were disturbed last year during remediation
 - 2. Releases should be decreasing

II. Alternatives Assessment

- A. Tom: Should we move the Boom closer to the mill?
 - 1. Pete: No, at mill there is a restricted channel – stream is much faster. Broke the eyebolt, even though boom was almost parallel to the stream
- B. Fred:
 - 1. for the most part the problem this time of year is “eyewash”: Material that would usually flush into any lake (plastic, foam, pollen, etc).
 - 2. Could keep boom for a while to make sure that there is not a release.
 - (a) Perhaps a release when lower lake – change of hydrogeological conditions.
 - (b) Better to have the boom in place & not need it, vs take it out, and then suddenly have an unforeseen blip being released.
- C. Material of concern is “mousse” like – organic material & other natural material, with a small trace of oil
- D. Fred: If keep the boom in place, EPI should be contracted to maintain until this fall
 - 1. Pete: not much work to maintain. Likely release in the spring – may still have release from bedrock right at the mill. If remove, then should place boom back in the spring
- E. We are over the \$1M – we should approach the partners, since we are spending their money. Do they want to hire EPI or another contractor directly?
- F. Clarification on releases: Potential for a release this fall & spring. Could have minor blebs anytime in the year.
- G. Nothing got past the existing boom this past spring, so do not need another boom below
- H. If continuous bleed overtime, could reinstall the dam that blew out.
 - 1. Expensive
 - 2. Low head hydro to pay for the cost

- I. Is there a value to sampling the black tarry oil at the Boom?
 - 1. We only have one sample
 - 2. Is it coming from the Winthrop commerce center?
 - 3. Time of year of sampling?
 - 4. Goal of sampling effort?
 - 5. Simply go with visual/odor observations & save the \$?
- III. Filling of impoundments – check with Sterling pierce to make sure material that is in the impoundments is safe to bury.
- IV. Decision
 - A. DEP would:
 - 1. place boom in the fall & spring for 2 years & see what we collect
 - 2. Then reassess. (Any additional work needed or possible? Dam?)
 - B. We should approach the partners to take over this work – should not be very expensive & this will be on their nickel anyway (plus interest if through DEP), since is already over \$1M limit on GWF expenditures.
 - 1. We would need to have them develop a simple workplan, or better yet, we can provide what we want as a basis for any discussion.
 - 2. This would then free our boom for emergency use –
 - 3. Could ask partners to keep the boom in place over the summer for PR, safety reason - their call. If the DEP had GWF \$, we would likely do this. Given the funds current status, we would remove the boom for the summer. So option for the partners.
 - C. Lake Association: Will need to alert them to our decision regarding this transition. Also, usually Tom and /or Pete are invited to their annual meeting for an update
 - D. Cost – should be under \$10K. Summer maintenance would be a marginal cost.
 - E. Check in with Bekka on cost recovery efforts & policy – has she, or is she soon going to send out a bill on this one?
 - F. Check with Sterling on what is in the bottom of the lagoons that are being filled-in: are closure requirements being followed and are they adequate? Has DEP assessed this already?
 - 1. Needs to be flipped over to solid waste or Uncontrolled sites if inadequate assessment or plan.
 - G. Tom & Pete & Fred to divvy the tasks up
 - H. Schedule
 - 1. Transition to Partners doing the O & M for this fall
 - 2. DEP will remove the boom at the end of July & document visual/odor observations.

Benn, Tom

From: Beane, John E
Sent: Tuesday, May 13, 2008 10:11 AM
To: Lavallee, Fred C; Blanchard, Peter J
Cc: Benn, Tom
Subject: RE: Mill stream, Winthrop

I have made three trips to inspect the boom this spring and it has been my observation that the material that collects is not rich in sticky black oil. I have dragged a branch through it each time and it was my judgment that wildlife would not be "oiled" by the material. It didn't smell like oil either. It is darker than "natural" foam I have seen on non-urban streams.

It would be interesting to compare the foam from a similar urban stream, but I can't think of a really good choice. Bond Brook drains much of the Mt. Vernon Ave. neighborhood. At least it would be convenient. Is it worth the effort?

Just checked Starlims. The lab is still not listing PAH results for Peter's 4/18/08 sample of the foam.

From: Lavallee, Fred C
Sent: Tuesday, May 13, 2008 9:45 AM
To: Blanchard, Peter J
Cc: Benn, Tom; Beane, John E
Subject: RE: Mill stream, Winthrop

All hip shots, but here are my thoughts:

The booming strategy is apparently effective, as long as streamflow conditions allow this kind of boom deployment at all. Suggest we keep the boom in place throughout 2008 and keep weekly records of how much oil we're collecting and when. This could be a spring bedrock GW discharge thing that falls off dramatically by July. Suggest we contract the cleaning and recordkeeping to EPI so you aren't saddled with it.

Is the visible sheen limited to the area just above the boom or do you see it everywhere downstream of the Mill? (I look at the tailrace almost every weekend but only around the retaining wall and "bridge." I haven't seen sheen there, even in the eddies. But I haven't walked downstream to the flatwater pools). If what we're collecting is just "concentrated sheen," I wouldn't expect to see any impact to the Lake with the boom removed. If the litter behind the boom is picking up blebs of black oil, still little Lake impact, but there'd be some oiled canoes and kayaks.

I doubt what we're collecting is road runoff – I think we know the source. We could verify by getting the PAH signature on what's being collected this year and comparing it with previous samples. If it's significantly different we could try the "control" boom on another stream with road impact but no mill.

I think we should monitor how much accumulates, when, and how much oil is in it (qualitatively) at least till mid-summer.

*Fred Lavallee, P.E.
 Division of Technical Services
 Bureau of Remediation & Waste Management
 Maine Department of Environmental Protection
 Phone: (207) 287-7677
 Fax: (207) 287-7826
 fred.c.lavallee@maine.gov*

From: Blanchard, Peter J

Sent: Tuesday, May 13, 2008 8:59 AM
To: Benn, Tom; Lavalley, Fred C; Beane, John E
Subject: Mill stream, Winthrop

Greetings. This is a shot I took this morning near route 202. This is one week's worth of accumulation. I plan to clean out this PM. You can see the rainbow oil sheen in the stream. It piles up into the brown foamy layer, and then consolidates into the dark brown/black material that I sampled a couple of weeks ago. I would expect that some of the accumulation would be from road runoff from downtown Winthrop, but certainly we know the bedrock in the vicinity of the former UST is also suspect. A couple of questions come to mind.

How long would be appropriate to continue maintaining this boom strategy?

Would it be of value to set up a boom in a similar manner at another stream to see if we get similar accumulation of material?

Would we expect to see measurable impacts to Annabessacook Lake if we removed the boom and allowed the buffering capacity of the lake to absorb this material?

Other thoughts?

LAST / LUST PROJECT - WORK PLAN PROPOSAL

Site Name: *Lower Carlton Hudson Mill #6* City/Town: *Winthrop*

Spill No.: *A-157-2005*

Proposal To: *George Seel*

Proposal By: *Tom Benn*

Other TS Staff On Project: *Fred Lovvick, Tom Beane, Pete Bruchard*

Proposal Date: *2/22/08*

General Proposal: *Post remediation monitoring - Lake monitoring*

3/19/08 Approved as proposed in accordance w/ Standard Conditions

Work Plan (list tasks below)	Date To Be Completed	Cost
<i>- Boom deployment (protective measure)</i>	<i>MARCH</i>	<i>—</i>
<i>- BI weekly monitoring of stream and lake</i>	<i>(APRIL-JULY)</i>	<i>\$1,000</i>
<i>- semi-regular sampling of lake sediment discharges</i>	<i>AUGUST</i>	<i>\$1,000</i>
	<i>TOTAL</i>	<i>\$2,000</i>
	<i>75%</i>	<i>\$2,300</i>

D-Tree Rank:
 Priority List Score:
 Statewide Priority List Rank:

Date Ranked:
 Date Scored:
 Priority List Date:

Significant Details: (list below) *The former Carlton Hudson Mill - now Winthrop Commerce Center went thru two separate digs - the current spill response printed existing ~ 100 yds of #6 oil contaminated soil and debris. This enumerated monitors*

Impacts of Not Performing Work: (list below)

Approved Denied Conditions:

Benn, Tom

From: Cobbossee Watershed District [cwd@fairpoint.net]
Sent: Tuesday, October 23, 2007 11:29 AM
To: Benn, Tom
Cc: Sue Neal
Subject: Annabessacook Lake boom

Hi Tom,

I received a call from Carol Malmsten, Annabessacook Lake property owner, asking why the boom at the north end of Annabessacook Lake had been removed and not replaced. I told her that you had said the booms in Mill Stream should be sufficient now that the clean up work was basically complete. However, she said that DEP told the public at the August meeting that the booms would be left in the lake and she believes that oil will get through the stream booms during rainstorm, and wonders why DEP has done something different than what they told the public. I told her I wouldn't presume to speak for you and would get in touch. She will be calling me back today. I look forward to your reply, and could you please let me know what phone number I should give her so she can call you direct? Thanks.

Wendy Dennis
cwd@fairpoint.net
377-2234

10/23/2007

Benn, Tom

From: Benjamin Murray [bmurray@coffineng.com]
Sent: Thursday, October 11, 2007 3:14 PM
To: Lavallee, Fred C; Benn, Tom
Cc: Environmental Projects, Inc.
Subject: RE: WCC parking lot COMPACTION and LIFTS
Attachments: S-1 REV 1.pdf

Fred,

The drawing shows what needs to be used for gravel under the pavement. See enclosed. Thanks.

Ben

-----Original Message-----

From: Lavallee, Fred C [mailto:Fred.C.Lavallee@maine.gov]
Sent: Thursday, October 11, 2007 1:47 PM
To: Benn, Tom
Cc: Environmental Projects, Inc.; Benjamin Murray
Subject: RE: WCC parking lot COMPACTION and LIFTS

Tom -

Have had a couple conversations w/ Lou Carrier about the large rocks that can't be backfilled. Initially he thought they had a use for them on another project, but have since changed their mind. Lou says they can go in or near the old treatment lagoons at the rear of the WCC property. I will try to connect with him late this week or early next and flag the location he has in mind.

Ben - I agree that at least occasional compaction testing is a good idea here, even if EPI is compacting in 6" lifts. Have you given them a gradation spec for the gravel used for the pavement subgrade?

From: Benn, Tom
Sent: Tuesday, October 09, 2007 1:39 PM
To: 'Benjamin Murray'; Lavallee, Fred C
Cc: Lajoie Bros. - Ken Lajoie (E-mail); Brian Fons, Environmental Projects, Inc.; Beane, John E; Lou Carrier (winthropcommerce@ctel.net); Mike Deyling, Summit Environmental
Subject: RE: WCC parking lot COMPACTION and LIFTS

Ben: THX for the background. Fred has kept me well informed along the way. Compaction at 6' lifts is the norm, and testing is right on target as well. I wasn't aware that we had a 4" maximum on the back-fill material. There was a lot of large rocks that came from the excavation. We'll have to find a home for that material...Any ideas?

Also, compaction testing is a service that Summit provides. Let's get that lined-up, Ben. Please feel free to discuss with them and I just brought Darryl some (4" - fill material) for testing last week. I'll copy Mike Deyling on this message in order to keep Summit in-the-loop. I'm bringing the paving company out to the site tomorrow morning to scope out the driveway needs. All's well. THX, guys!

Tom

From: Benjamin Murray [mailto:bmurray@coffineng.com]
Sent: Tuesday, October 09, 2007 11:55 AM
To: Benn, Tom; Lavallee, Fred C
Cc: Lajoie Bros. - Ken Lajoie (E-mail)
Subject: RE: WCC parking lot COMPACTION and LIFTS

Tom,

I talked to Ken after he sent the email out. I told him that we have instructed EPI to set aside any rocks or clumps in the backfill greater than 4" in diameter. I also told him that EPI is intending to compact the backfill at every 6" lift. Also due to the fact that they removed soil from the site, obviously they will not be able to fill in the entire hole with what they took out. I told him that EPI is going to have a final grade consisting new compacted gravel. Ken seemed fine with my explanation. I still think it is a good idea for some compaction testing just to make sure that the work is done properly. Summit does provide this type of testing. If you would like, I can get a price from them to provide testing, as the wall is backfilled. Let me know. Thanks.

Thanks.

Ben

-----Original Message-----

From: Benn, Tom [mailto:Tom.Benn@maine.gov]
Sent: Tuesday, October 09, 2007 11:06 AM
To: Lavallee, Fred C; Benjamin Murray
Subject: WCC parking lot COMPACTION and LIFTS

Fred and Ben: Ken is concerned here, and I understand his issue. Can you inform the partners what we intend on doing with regard to compaction? Feel free to reply directly to Ken on my behalf. THX-a-Ton!

Tom

From: Kenneth O Lajoie [mailto:klajoie@lajoiebros.com]
Sent: Thursday, October 04, 2007 7:15 AM
To: Benn, Tom
Cc: Lou Carrier; 'John Lajoie'; John Martin; slajoie@lajoiebros.com; Gene Green
Subject: Compaction

Tom,

It looks like we're finally getting close to the end of this nightmare project. As we get ready to fill the hole in the parking lot I'm concerned about compaction. We have a lot of fill going back in and without compacting it in lifts I'm concerned that we will have a continuous sink hole in this parking lot. Will there be any soil compaction testing done during the backfill operation?

**Thanks
Ken**

Benn, Tom

From: Kenneth O Lajoie [klajoie@lajoiebros.com]
Sent: Tuesday, October 09, 2007 2:09 PM
To: Benn, Tom
Subject: RE: WCC parking lot fill

Tom,
 I'm not suggesting we put it in the lagoon only next to the lagoon. We will use it for fill when we finally do get a permit.
 Ken

From: Benn, Tom [mailto:Tom.Benn@maine.gov]
Sent: Tuesday, October 09, 2007 1:51 PM
To: Kenneth O Lajoie
Cc: Ladner, Stacy A; Seel, George J
Subject: WCC parking lot fill

Ken: Our DEP L & E folks do not want us putting anything in that former waste lagoons. I will not go there, Ken...I'll copy Stacy Ladner because that concern was raised by her staff a few months ago... Otherwise, please feel free to catch up on-site tomorrow at 7. I look forward to seeing you.

Tommy

From: Kenneth O Lajoie [mailto:klajoie@lajoiebros.com]
Sent: Tuesday, October 09, 2007 1:47 PM
To: Benn, Tom
Subject: RE: WCC parking lot COMPACTION and LIFTS

Tom,
 I think the rocks could be dumped beside the lagoon behind the main parking lot behind the building. We may have to push some of the existing piles of dirt to make sure we leave room for Winthrop Utilities to get to their sewer pump locate to the left. We have applied with DEP to infill this pond but it's been a year and we still don't have a permit. I'd be glad to meet you there and show you the area.
 Ken.

From: Benn, Tom [mailto:Tom.Benn@maine.gov]
Sent: Tuesday, October 09, 2007 1:39 PM
To: Benjamin Murray; Lavallee, Fred C
Cc: Lajoie Bros. - Ken Lajoie (E-mail); Brian Fons, Environmental Projects, Inc.; Beane, John E; winthropcommerce@ctel.net; Mike Deyling, Summit Environmental
Subject: RE: WCC parking lot COMPACTION and LIFTS

Ben: THX for the background. Fred has kept me well informed along the way. Compaction at 6' lifts is the norm, and testing is right on target as well. I wasn't aware that we had a 4" maximum on the back-fill material. There was a lot of large rocks that came from the excavation. We'll have to find a home for that material...Any ideas?

Also, compaction testing is a service that Summit provides. Let's get that lined-up, Ben. Please feel free to discuss with them and I just brought Darryl some (4" - fill material) for testing last

week. I'll copy Mike Deyling on this message in order to keep Summit in-the-loop. I'm bringing the paving company out to the site tomorrow morning to scope out the driveway needs. All's well. THX, guys!

Tom

From: Benjamin Murray [mailto:bmurray@coffineng.com]
Sent: Tuesday, October 09, 2007 11:55 AM
To: Benn, Tom; Lavallee, Fred C
Cc: Lajoie Bros. - Ken Lajoie (E-mail)
Subject: RE: WCC parking lot COMPACTION and LIFTS

Tom,

I talked to Ken after he sent the email out. I told him that we have instructed EPI to set aside any rocks or clumps in the backfill greater than 4" in diameter. I also told him that EPI is intending to compact the backfill at every 6" lift. Also due to the fact that they removed soil from the site, obviously they will not be able to fill in the entire hole with what they took out. I told him that EPI is going to have a final grade consisting new compacted gravel. Ken seemed fine with my explanation. I still think it is a good idea for some compaction testing just to make sure that the work is done properly. Summit does provide this type of testing. If you would like, I can get a price from them to provide testing, as the wall is backfilled. Let me know. Thanks.

Thanks.

Ben

-----Original Message-----

From: Benn, Tom [mailto:Tom.Benn@maine.gov]
Sent: Tuesday, October 09, 2007 11:06 AM
To: Lavallee, Fred C; Benjamin Murray
Subject: WCC parking lot COMPACTION and LIFTS

Fred and Ben: Ken is concerned here, and I understand his issue. Can you inform the partners what we intend on doing with regard to compaction? Feel free to reply directly to Ken on my behalf. THX-a-Ton!

Tom

From: Kenneth O Lajoie [mailto:klajoie@lajoiebros.com]
Sent: Thursday, October 04, 2007 7:15 AM
To: Benn, Tom
Cc: Lou Carrier; 'John Lajoie'; John Martin; slajoie@lajoiebros.com; Gene Green
Subject: Compaction

Tom,

It looks like we're finally getting close to the end of this nightmare project. As we get ready to fill the hole in the parking lot I'm concerned about compaction. We have a lot of fill going back in and without compacting it in lifts I'm concerned that we will have a continuous sink hole in this parking lot. Will there be any soil compaction testing done during the backfill operation?

Thanks

Benn, Tom

From: Collins, Thomas

Sent: Thursday, September 27, 2007 10:27 AM

To: Benn, Tom

Subject: Contract # 20070921-06001 ES Coffin Engineering and Surveying

Hi Tom. Please add a statement of the services the contractor will provide in the scope of work section in Rider A. I know that the letter from the contractor has been included and will be part of the contract but I do need something in the scope of work section as well. You can send it to me electronically and I will incorporate it into the contract. Thanks. Tom.

Thomas Collins

Division of Purchases

State of Maine

Department of Administrative and Financial Services

Burton M Cross Building

4th Floor

Augusta, Maine 04333-0009

Tel 207-624-7330

10/2/2007

Benn, Tom

From: Benn, Tom
Sent: Friday, September 14, 2007 12:15 PM
To: 'Benjamin Murray'
Cc: Lavallee, Fred C; Brian Fons, Environmental Projects, Inc.; Lajoie - John Lajoie (E-mail)
Subject: WCC: 2 Wall Installation Questions from EPI

Ben. I think I just missed you. I stopped there with Hank Aho mid-morning. Seen John LaJoie and I Jeremy Greenman from EPI had 2 questions that need to be answered:

1) How much specified-material is needed for the nested material to be placed around the sewer line? and a similar question with regard to the parallel weep-drainage that will be installed along the bottom of the retaining wall? We want to re-use as much of the native material that we have removed and stock-piled across the street from the excavation to place back in the hole.

2) The top grade of the parking lot prior to excavation was right at terminal wall height. We wanted to make sure that replacement grade is the same or similar.

THX, Ben. All looks great, and the work is progressing very smartly. I'll send a copy of this to Brian Fons with EPI and John. I understand that John Lajoie will be talking with you later today as well. Everyone appears to be all set and on the same page. Nice work and coordination. I appreciate your efforts, and I'd really like to see the concrete pour if possible. Thank you, kindly. Tom

From: Benjamin Murray [mailto:bmurray@coffineng.com]
Sent: Friday, September 14, 2007 11:45 AM
To: Lavallee, Fred C
Cc: Benn, Tom
Subject: WCC

I stopped out to the site this morning. Everything looks to be going fine. Lajoie Brothers was installing the reinforcing for the footing, which appeared to be consistent with the drawings. There was a little water in the footings but it should be able to be displaced easily. Let me know if anything arises. Thanks.

Benjamin E. Murray, P.E.
Project Engineer
E.S. Coffin Engineering & Surveying, Inc.

P.O. Box 4687 432 Cony Road
Augusta, Maine 04330
(207) 623-9475 Phone
1-800-244-9475 Toll Free
(207) 623-0016 Fax
bmurray@coffineng.com
<http://www.coffineng.com/>



Benn, Tom

From: Benn, Tom
Sent: Thursday, September 13, 2007 10:16 AM
To: 'Cheri L. Butler'
Cc: Hunter, Bruce E; Cobbessee Watershed District (c wd@fairpoint.net); Cobbossee Watershed District (c wd@pivot.net); Munkwitz, Nicole; Bacon, Linda C; (sue.neal@maine.edu); Beane, John E; Lavallee, Fred C; Blanchard, Peter J; Seel, George J; Aho, Hank; Parker, Barbara T
Subject: Winthrop Mill Stream and Annabessacook Lake Ecological Risk Assessment

Cheri:

I appreciate your call, and follow-up e-mail. As Bruce Hunter may have mentioned, I am the DEP Project Manager for the defunct Carlton Mill remediation effort, and in addition to addressing the obvious out there we have been working out a means to characterize and determine if more invasive remediation efforts need to be undertaken in Mill Stream and in the north basin sediments of Annabessacook Lake. John Beane, the DEP's Project Geologist has done some fine work looking at the sediments relative to oil contamination. Linda Bacon of the DEP Land and Water Resources Bureau has been extremely helpful to us assessing impacts from # 6 oil.

I have been speaking with the Cobbessee Watershed District in Winthrop who have been extremely helpful to my team. Of course I want to utilize their skills and see if they are capable and willing to do this eco-assessment. I have spoken with their Executive Director, Bill Monegal who has some excellent background in this regard. CWD also possess local knowledge of the watershed. In addition, I F & W's Nicole Munkwitz has done some fine work in assessing acute impacts to Waterfowl and Wading Bird habitat, and local Wildlife. Each has expertise that will aid us in this work. I too have personal interest in this from my early days.

Your contact is timely, and I look forward to talking with you more on this, as I set out a plan for this work. I will keep you "in-the-loop" Cheri. Thank you and All-the-BEST!

Tom Benn,

-----Original Message-----

From: Cheri L. Butler [mailto:cheri.l.butler@gmail.com]
Sent: Monday, September 10, 2007 3:50 PM
To: Benn, Tom
Subject: Ecological Risk Assessment needs

Hello Mr. Benn,

Bruce Hunter alerted me to your potential need for an ecological risk assessment addressing petroleum in a marsh adjacent to a lake. I worked for 10 years at the Portland, ME office of an environmental consulting firm called Menzie-Cura & Associates. Since the office closed last fall, I have been working out of my home in Saco doing ecological and human health risk assessments. I also work with a colleague, Ted Wickwire, who works out of Brunswick, ME. Both of us have experience performing ecological risk assessments in aquatic and terrestrial environments. I would be happy to speak with you about what your needs are and see how I can help. My contact information is listed below.

Sincerely,
Cheri Butler

Phone: 207-282-2484

Email: cheri.l.butler@gmail.com

Benn, Tom

From: Cheri L. Butler (cheri.l.butler@gmail.com)
Sent: Thursday, September 13, 2007 11:24 AM
To: Benn, Tom
Subject: Example Site Conceptual Model

Attachments: Example Site Conceptual Models.doc



Example Site
Conceptual Model

Hello again Tom,

I've attached a file to this message with some examples of simple site conceptual models. These happen to be for a release of gasoline, but you get the general idea. I developed these with my former boss, Charlie Menzie, as part of a primer for evaluating ecological risk at petroleum release sites.

Cheri

Benn, Tom

Subject: FW: Proposal

From: Brenda [mailto:blmoody@lajoiebros.com]
Sent: Monday, September 10, 2007 12:44 PM
To: Benn, Tom
Cc: 'John Lajoie'
Subject: Proposal

Treasurer, State of Maine
Dept of Environmental Protection
Attn: Tom Benn

September 10, 2007
Proposal #2007521
Re: WCC retaining wall

Form and place concrete for WCC retaining wall as per Coffin Engineering plan dated 9/10/07:

\$ 7,860.00 - Forms, ties, rebar, staging and miscellaneous

\$15,400.00 - Concrete

\$ 1,620.00 - Boom truck

\$ 3,740.00 - Pump trucks

\$ 875.00 - Concrete testing

\$26,000.00 - Labor

\$11,110.00 - Overhead

\$66,605.00 - Total Cost

From: Lajoie Bros., Inc.
3029 No Belfast Ave
Augusta, ME 04330

622-1764 (phone)
622-5875 (fax)

Benn, Tom

From: Brenda [blmoody@lajoiebros.com]
Sent: Monday, September 10, 2007 9:59 AM
To: Benn, Tom
Cc: 'John Lajoie'
Subject: Lajoie Bros info

Tom,

Following is our company info: Lajoie Bros., Inc.
3029 North Belfast Ave.
Augusta, Maine 04330

622-1764 (phone)
622-5875 (fax)

Please feel free to contact me if you should need any further information.

Brenda

Benn, Tom

From: Lavallee, Fred C
Sent: Friday, September 07, 2007 2:16 PM
To: Beane, John E; Benn, Tom
Cc: Blanchard, Peter J
Subject: FW: Retaining Wall Design
Attachments: S-0.pdf; S-1.pdf

Ben Murray's design for the replacement wall. It provided good groundwater relief for the upper wall but not for the footer. Ben will revise the design to include perforated pipe along the base of the entire footer, as he did at the base of the wall. Rather than put pipe penetrations through six feet of concrete footer, he will bring the pipe around both ends. He's going to provide us and Lajoie with a revised drawing.

I've also asked him to come up with a backfill spec that will carry groundwater behind the wall to the relief piping quickly, to keep the head as low as possible.

From: Benjamin Murray [mailto:bmurray@coffineng.com]
Sent: Friday, September 07, 2007 1:20 PM
To: Lavallee, Fred C; Benn, Tom
Cc: Summit - Bill Peterlein (E-mail); Lajoie - John Lajoie (E-mail)
Subject: Retaining Wall Design

Fred/Tom,

Please find attached the retaining wall design for Winthrop. Lajoie Bros. has already picked up the plans. I will have Bill from Summit review the plans to see if he has any recommendations. Let me know if you have any questions. Thanks and have a great weekend.

Benjamin E. Murray, P.E.
Project Engineer
E.S. Coffin Engineering & Surveying, Inc.
P.O. Box 4687 432 Cony Road
Augusta, Maine 04330
(207) 623-9475 Phone
1-800-244-9475 Toll Free
(207) 623-0016 Fax
bmurray@coffineng.com
<http://www.coffineng.com/>



Benn, Tom

From: Brenda [blmoody@lajoiebros.com]
Sent: Monday, September 10, 2007 9:49 AM
To: Benn, Tom
Cc: 'John Lajoie'
Subject: Proposal

Treasurer, State of Maine
Dept of Environmental Protection
Attn: Tom Benn

September 10, 2007
Proposal #2007521
Re: WCC retaining wall

Form and place concrete for WCC retaining wall as per Coffin Engineering plan dated 9/10/07

Total Cost: \$66,605.00

Benn, Tom

From: Benn, Tom
Sent: Thursday, August 30, 2007 10:10 AM
To: Ken Lajoie (klajoie@lajoiebros.com); (sue.neal@maine.edu); Flood, RepPatrick
Cc: Wendy Dennis (cwd@fairpoint.net); Lavallee, Fred C; Beane, John E; Blanchard, Peter J; Lajoie - John Lajoie (E-mail); Aho, Hank; Seel, George J; Hyland, Mark; Haefele, Julie F.; Lou Carrier (winthropcommerce@ctel.net); Brian Fons, Environmental Projects, Inc.; James, Mary R; Hunter, Bruce E
Subject: WCC Project Update and Retaining Wall Schedule
Attachments: P8290012.JPG; P8290014.JPG; P8290015.JPG

Ken, Sue and Pat:

A quick note and three site photo's to each of you regarding DEP's work in Town...The excavation is for the most part completed. EPI is removing material that remains along the wall of the excavation, and Jeremy Greenman reports that we'll be dispatching one 18 wheeler of oily debris to Pine Tree Landfill later this afternoon. I am hopeful that John Beane will be able to step back a little from the project now...He's been great!

Ben Murray of Coffin Engineering is progressing with the design of the replacement wall, and LaJoie Brothers is preparing for installation of the retaining wall. I'm very pleased with all's that's happening here. Fred tells me it will be accomplished in a series of three or four concrete pours, the first of which is scheduled for next Wednesday. Fred and Ben Murray are working closely together on getting this restoration work the attention which it needs.

When I was on-site yesterday, the excavation looked great, and the ponded oily water in the cofferdam was being filtered. There was some silt entering Mill Stream, however it was being caught very successfully by the series of booms. As soon as the slab (first pour) is accomplished, the bulk of silt releases from the site should be behind us. I "want" to say that the oil release will do the same!

You will find a series of related e-mails attached to the bottom of my rather simple message. I hope that it is not too much background, however I wanted to indicate the behind-the-scenes work that my folks have been doing to keep this work progressing on a smart timeframe.

I've copied Wendy Dennis on this message too. If we need some help with Mill Stream water levels it will probably be in the next week to ten days, and we will be calling with an anxious voice tone! Please keep those fingers crossed...That the fall rains hold off just a bit longer...and I almost forgot to mention one more item; Peter Blanchard called me about a lethargic beaver which was spotted along the stream bank several days ago. He had suffered a broken leg, and wildlife officials transported the critter to a rehab center. Reports were that he was gathering tree branches right up until his time of capture.

I'll continue to keep you updated and we all appreciate all your support and help. Thank you!

Tom Benn, DEP PM
SHS # 17
Augusta, Maine
(office) 287-7662
(cell) 215-3692
(home) 549-7186

From: Benn, Tom

8/30/2007

Sent: Thursday, August 30, 2007 9:17 AM
To: Lavallee, Fred C; Beane, John E; Blanchard, Peter J
Cc: Ben Murray (bmurray@coffineng.com); Ken Lajoie (klajoie@lajoiebros.com)
Subject: September 5th WCC Retaining Wall Footing

Fred/ John: I'm a little dissappointed having to wait until next Wednesday, but that's OK. The schedule will work fine with me. Being on site on Wednesday is impossible for me. Fred: I hope that you are able to have a presence out there as best you can...I know you'll give it your best!

My schedule next week takes me to Sprucehead on Tuesday, Fairfield on Wednesday, and Rangeley on Thursday. It is what it is.

I will be talking with John Lajoie on contracting issues today. I'll copy Ben Murray on this message. We're all looking forward to closing the gap in Winthrop. Thank you both for all your hard work out there. I'm also reminded that our contractors have done very well with this difficult project. We still in need of a little more good weather to Get-R-Done.

Tom

From: Benjamin Murray [mailto:bmurray@coffineng.com]
Sent: Wednesday, August 29, 2007 5:31 PM
To: Lavallee, Fred C; Benn, Tom
Cc: Summit - Bill Peterlein (E-mail); Lajoie - John Lajoie (E-mail)
Subject: RE: WCC Retaining Wall Footing

Fred,

I talked to John Lajoie and the earliest he can pour the concrete would be Wednesday. If Monday weren't a holiday, he would be able to do Tuesday but he needs a day to schedule a pump truck. I discussed it with Jeremy and I'll be in contact on Tuesday to verify and make sure the weather will cooperate and there isn't any problems. Jeremy is going to schedule a vacuum truck for that day as well to remove as much of the sediment as possible.

Talk to you soon. Thanks.

Ben

-----Original Message-----

From: Lavallee, Fred C [mailto:Fred.C.Lavallee@maine.gov]
Sent: Wednesday, August 29, 2007 10:57 AM
To: Benjamin Murray; Benn, Tom
Cc: Summit - Bill Peterlein (E-mail); Lajoie - John Lajoie (E-mail)
Subject: RE: WCC Retaining Wall Footing

Ben -

This sounds fine if the concrete pour can be kept from encroaching too far into the streambed. I thought the deepest part of the hole was several feet beyond (west of) the alignment of the wall. If we were going

to pour this full as well, we'd need to amend our NRPA permit, as it would mean a permanent change to the streambed. Still possible, but nothing I've talked about with our Land/Water folks so far.

So how far into the streambed (beyond the footing) would the concrete fill extend?

Do not know what a "return" is - could you fax/e-mail me a sketch?

Tom and I will be going to the site today and I'll look at it with this in mind.

*Fred Lavallee, P.E.
Division of Technical Services
Bureau of Remediation & Waste Management
Maine Department of Environmental Protection
tel: (207) 287-7677 fax: (207) 287-7826
e-mail fred.c.lavallee@maine.gov*

From: Benjamin Murray [mailto:bmurray@coffineng.com]
Sent: Tuesday, August 28, 2007 5:09 PM
To: Lavallee, Fred C; Benn, Tom
Cc: Summit - Bill Peterlein (E-mail); Lajoie - John Lajoie (E-mail)
Subject: WCC Retaining Wall Footing

Fred/Tom,

I met with John Lajoie to discuss the construction of the wall this afternoon. John recommended that it would be cheaper, faster, and easier to pump out the "hole" where the standing water is located and pour in concrete to use as a base for the footing. The concrete would fill the entire hole and be poured to about the elevation of the bottom of the existing wall footing. Forms would not have to be scribed to the existing ledge and it would provide a level area out of the water in order to construct the main footing. This may also help in your goal of encapsulating any of the existing contamination. I would still like to pin the ledge for a good connection and carry the connection into the new footing. We also discussed making a return in the new wall near the existing stonewall. This would allow the new wall to be separate from the transition to the stonewall and then a second pour can be made for the transition.

Please discuss the concept and get back to me with any comments. We discussed the option with EPI at the site and they were receptive. The existing wall footing does not have to be cut or modified. John can use what is there fine. John recommended the construction of a bond out for the pipe going through the wall. Careful scheduling will need to be done for the construction of the wall due to the fact that the opening will not be available for piping until the forms are removed. I'll be working on a design and forward plans as soon as they are complete. Thanks.

Benjamin E. Murray, P.E.
Project Engineer
E.S. Coffin Engineering & Surveying, Inc.
P.O. Box 4687 432 Cony Road
Augusta, Maine 04330
(207) 623-9475 Phone
1-800-244-9475 Toll Free
(207) 623-0016 Fax
bmurray@coffineng.com
<http://www.coffineng.com/>



Benn, Tom

From: Benjamin Murray [bmurray@coffineng.com]
Sent: Tuesday, August 28, 2007 5:09 PM
To: Lavallee, Fred C; Benn, Tom
Cc: Summit - Bill Peterlein (E-mail); Lajoie - John Lajoie (E-mail)
Subject: WCC Retaining Wall Footing

Fred/Tom,

I met with John Lajoie to discuss the construction of the wall this afternoon. John recommended that it would be cheaper, faster, and easier to pump out the "hole" where the standing water is located and pour in concrete to use as a base for the footing. The concrete would fill the entire hole and be poured to about the elevation of the bottom of the existing wall footing. Forms would not have to be scribed to the existing ledge and it would provide a level area out of the water in order to construct the main footing. This may also help in your goal of encapsulating any of the existing contamination. I would still like to pin the ledge for a good connection and carry the connection into the new footing. We also discussed making a return in the new wall near the existing stonewall. This would allow the new wall to be separate from the transition to the stonewall and then a second pour can be made for the transition.

Please discuss the concept and get back to me with any comments. We discussed the option with EPI at the site and they were receptive. The existing wall footing does not have to be cut or modified. John can use what is there fine. John recommended the construction of a bond out for the pipe going through the wall. Careful scheduling will need to be done for the construction of the wall due to the fact that the opening will not be available for piping until the forms are removed. I'll be working on a design and forward plans as soon as they are complete. Thanks.

Benjamin E. Murray, P.E.

Project Engineer
E.S. Coffin Engineering & Surveying, Inc.
P.O. Box 4687 432 Cony Road
Augusta, Maine 04330
(207) 623-9475 Phone
1-800-244-9475 Toll Free
(207) 623-0016 Fax
bmurray@coffineng.com
<http://www.coffineng.com/>



8/29/2007



Benn, Tom

From: Beane, John E
Sent: Wednesday, August 15, 2007 2:30 PM
To: Benn, Tom; Blanchard, Peter J; Lavallee, Fred C
Subject: Excavation

Hi Tom,

Nothing is easy! They removed most of the footing and dug the sediments in the stream out to the edge of the sandbags, and there is 3.5 or 4 feet of oil-saturated soil under the sandbags. I came back to discuss it with you, but I couldn't find you.

I'm going back out. I may tell them to shift the coffer dam out six or eight feet so we can get most of that soil. The other alternative is to put a small excavator in the stream bed to work on the stream bed soils after the major excavation. I have a cell phone (557-2280). Call me if you want to help make this decision. Better yet, come on out.

Cheers,

John

John E. Beane, C.G., Senior Geologist
Maine Department of Environmental Protection
Bureau of Remediation and Waste Management
Division of Technical Services
(207) 287-7635

Winthrop Commerce Center Public Meeting Outline

August 14, 2007

Peter (5 minutes)

Discussion:

- Site history/investigations/past remedial measures;
- Dam failure;
- Patriots' Day storm (April, 2007) Response measures: booming, free product cleanup, investigation, oiled wildlife;

Slides/Photos:

- Large (orientation-scale) map showing town, mill, stream, northern part of Annabessacook Lake
- Site map of mill buildings, stream, investigation/remediation area
- Selected photos from 2005 and 2006 presentations to Lake Assn.
- Selected photos from 2007 events (booming, free product cleanup)

John (5 minutes)

Discussion:

- 2006 investigation/sampling of sediments in northern Lake cove; effect of lake ice;
- 2007 free-product investigation near lake outlet of Mill Stream;
- Conceptual site model of product/stream/groundwater interaction - what mobilizes product?
- Initial cofferdam construction and boom deployment;
- 2007 drilling program and results: characterization of location/extent of product; realization that both soil and bedrock were still affected;
- Cofferdam expansion; drum skimmer readied;
- Flushing program and results;

Slides/Photos:

- Selected photos from 2006 investigation
- Selected photos from 2007 investigation
- "Before" and "after" schematic sections through contaminated area
- Photos showing changes in streambed sediment since dam failure
- Cofferdam construction: initial and expanded
- Selected photos from drilling program
- Selected photos from flushing program

Fred (5 minutes)

Discussion:

Winthrop Commerce Center Public Meeting Outline

August 14, 2007

- Options for addressing contaminated soil; how evaluated;
- Initial excavation: buried utilities, remnants of pump house foundation; waste characterization;
- Discovery of inaccessible soil;
- New options: Entomb in place? Support wall and excavate beneath? Remove/replace wall? Remove wall and not replace?
- Considerations: integrity of abutting structures, worker safety, permanence of fix
- Decision to remove and replace

Slides/Photos:

- Selected photos of buried piping and concrete
- Selected photos during excavation
- Selected photos of inaccessible soil
- Selected photos showing deteriorated portions of wall

Tom (5 minutes)

Discussion:

- Path forward/timetable;
- Confidence in permanence of fix; uncertainties;
- Need to co-ordinate/communicate among multiple parties;
- Co-operation from all involved:
 - Internal team members
 - EPI - prompt, competent response to project needs under horrible working conditions;
 - CWD - keeping us apprised of conditions on the ground; willingness to manipulate Mill Stream water levels to accommodate work;
 - Owners - access, information, disruption of their property;
 - Lakeshore property owners - patience during long, complex remediation w/ repeated disappointments;
- Lake impacts - IF&W report following 2007 wildlife survey; animal rehab

Linda (5 minutes)

Discussion:

- What's known about impacts, what's not known;
- Steps needed to evaluate effects;
- Experience with oil contaminated sediment at Sandborn Pond, possibly other locations?
- Possible remedial measures; pros and cons;

Winthrop Commerce Center Public Meeting Outline

August 14, 2007

Photos/Slides: ???

Benn, Tom

From: Blanchard, Peter J
Sent: Friday, August 10, 2007 4:47 PM
To: Lavallee, Fred C; Bacon, Linda C; Benn, Tom; Beane, John
E
Subject: Draft presentation

I completed a draft powerpoint presentation for everyone to review. I would have posted in in our friendly geology unit file, but that is "read only" for me. So, I posted it in H:BRWM\Response Division\Education & Outreach\Presentations\Winthrop Commerce Center.ppt

See you Monday PM.

Peter J. Blanchard
Division of Response Services
phone: (207) 287-3692
e-mail: peter.j.blanchard@maine.gov

Benn, Tom

From: Lavallee, Fred C
Sent: Wednesday, August 08, 2007 1:27 PM
To: Blanchard, Peter J; Beane, John E; Benn, Tom
Subject: WCC Meeting

To All:

Linda Bacon will attend the Tuesday evening meeting. She'll also be at the Monday PM pre-meeting and decide then what her niche should be in the presentation. She will try to connect with Peter for a from-the-shore tour of the affected area before the end of the week.

Jeremy will mobilize EPI resources for the wall removal. He will let me know shortly when they can begin the work. He asks that we get him a decision on how much of the wall is going as soon as we hear from the partners. If the decision is to remove the entire wall, the rickety "footbridge" goes too, of course. This will complicate somewhat getting down to stream level until the wall is gone and the soil dug out. Jeremy understands that he can draw on Summit and/or Coffin as needed during wall removal, and that Coffin will be providing the design for the replacement wall.

I told Jeremy we'd welcome an EPI face at the Tuesday meeting.

*Fred Lavallee, P.E.
Division of Technical Services
Bureau of Remediation & Waste Management
Maine Department of Environmental Protection
tel: (207) 287-7677
e-mail fred.c.lavallee@maine.gov*

Benn, Tom

From: Benn, Tom
Sent: Wednesday, August 08, 2007 11:43 AM
To: 'Pat Flood'; sue.neal@maine.edu
Cc: Lavallee, Fred C; Blanchard, Peter J; Beane, John E
Subject: RE: Tuesday's meeting

Thank you, Pat.

We really look forward to providing another update to the citizens about our work in Winthrop during the last field season, and work that began in the spring of 2005. My team met this morning to go over how we would deliver the presentations. Fred is working up an agenda that we drafted. I will share that with you. My team is scheduled to brief Mark Hyland when he returns on Monday at 1:30 at DEP. Would you like to attend that meeting or maybe a portion of it?

We have been moving along quickly into excavation, and have encountered some difficulties in doing that. We're talking with the partners today regarding our plan and see whether they want to address some issues which they will need to grapple with. We have much more understanding now, we are looking at several big challenges and I've had to put some evaluation tasks on-hold at this time; such as studying possible effects to wildlife of the lake sediment.

I have a concern, and have to ask: If Q & A moves away from the DEP's work, can we rely upon you to reign that in, Pat? I have a great team of folks working with me on this project. I will bring along a screen.

We had a successful meeting on-site with structural engineers, and caught up with Sue there. Sue, it was a pleasure to finally meet you, and thank you for all your support through the year. Thank you both.

Tom Benn, DEP Project Manager

From: Pat Flood [mailto:patricksaflod@adelphia.net]
Sent: Wednesday, August 08, 2007 10:32 AM
To: Benn, Tom; sue.neal@maine.edu
Subject: Tuesday's meeting

Dear Tom and Sue,

I stopped in at the town hall today and we are all set with accomodations for Tuesday's meeting **EXCEPT** there is no screen. Can DEP bring one please?

8/8/2007

I'll draft up an agenda along the lines of your suggestions Tom and send it to you to look at. Then I will have it on a desk as participants arrive.

My strongest suggestion is that we get people out of the meeting by about 8PM (one hour). I think they will really appreciate that. So if you wanted to have some posters set up, that would probably be helpful but I think we'll still need brief presentations by the key people, trying to limit presentation material to say 1/2 hour or so if possible. And then allow q/a at posters or in an open format for about 1/2 hour.

I'll introduce the panel and then get out of the way.

Thank you for bringing so much expertise to this meeting Sue and Tom.

Sincerely, Pat Flood 395-4915

Benn, Tom

From: sue.neal@maine.edu
Sent: Tuesday, August 07, 2007 9:13 AM
To: Pat Flood
Cc: Benn, Tom
Subject: RE: FW: Winthrop excavation

Good Morning,

Pat, thank you for stepping up to moderate. Im not sure who else will be at the meeting. Tom, could you provide the names and titles of those from DEP? I stopped in to CWD yesterday. Wendy Dennis is on vacation next week and I did not get the feeling that Bill Monagle will be attending. He didn't say he wasn't but he never mentioned he was. Do you want me to come right out and ask him?

I would assume (you know we NEVER should do that) that we should expect:

DEP, Tom and others

Me, Annabessacook Lake Association

Cornell Knight, Town Manager Winthrop

Someone from the Monmouth Town Manager's office Present owners of the mill.

Bob Moore, Friends of the Cobbossee Watershed (I'll call him if you want me to) CWD, Bill Monagle or a representative

I don't think Bob Moore and Bill Monagle need to sit at the front but it would be nice to have their support.

What else could I do to help? Have you heard any more from the present owners of the mill? Do any of them plan to attend? I will certainly plan to be at the town office early.

Just a thought: I would be surprised if the question of taxes does not come up.

Sue

Quoting Pat Flood <patricksaflod@adelphia.net>:

> Dear Sue and Tom,
> I will be happy to moderate. I'd just need to know the names and
> titles of the people who will be presenting, and the 3 or 4 items to
> place on an agenda, which I will have available for people to pick up when they come in.
> Also it would be good to have contact info of the key DEP people that
> we could also have available. I'm not sure what the room has for a
> screen. I assume you'll want one Tom?

Benn, Tom

To: sue.neal@maine.edu; Pat Flood
Subject: Winthrop Meeting

Representative Flood and Sue Neal:

Thank you both for your messages with regard to next Tuesday's meeting. At this point in time DEP presenters will be John Beane, DEP Senior Geologist Fred Lavallee, DEP and myself, DEP Project Manager. I hope that Peter Blanchard, DEP Responder who has briefed the Annabessacook Lake's Association in the past will be presenting as well. I have e-mailed the Commerce Center partners last week and we have discussed ongoing remedial issues with them throughout the course of actions.

Relative to meeting format suggestions, I know that there is a lot of technical information to present, and we are in the "thick" of addressing the oil discharges. My team members can provide brief overviews and provide time for attendees to ask questions. Staff have brought up another option along the idea of "poster-type" setting where attendees can hear about various components of the clean-up at several stations, and not tie up as much meeting time.

Access for a "power-point" computer presentation was requested, so the screen will be great. When we are on-site tomorrow I will stop by CWD to inquire about Bill's availability. I did see Wendy yesterday, but didn't have the chance to talk with her. Thank you, both.

We're meeting with our managers on Monday afternoon, so there may be other DEP folks in attendance. Thank you for coordinating this, and we appreciate your support.

Tom Benn DEP Remedial Project Manager

I will e-mail you tomorrow with a more succinct list and titles for you. We arrive at the Town Offices will come early to the meeting and I understand that we will be using the screen for

-----Original Message-----

From: sue.neal@maine.edu [mailto:sue.neal@maine.edu]
Sent: Tuesday, August 07, 2007 9:13 AM
To: Pat Flood
Cc: Benn, Tom
Subject: RE: FW: Winthrop excavation

Good Morning,

Pat, thank you for stepping up to moderate. Im not sure who else will be at the meeting. Tom, could you provide the names and titles of those from DEP? I stopped in to CWD yesterday. Wendy Dennis is on vacation next week and I did not get the feeling that Bill Monagle will be attending. He didn't say he wasn't but he never mentioned he was. Do you want me to come right out and ask

him?

I would assume (you know we NEVER should do that) that we should expect:

DEP, Tom and others

Me, Annabessacook Lake Association

Cornell Knight, Town Manager Winthrop

Someone from the Monmouth Town Manager's office Present owners of the mill.

Bob Moore, Friends of the Cobbossee Watershed (I'll call him if you want me to) CWD, Bill Monagle or a representative

I don't think Bob Moore and Bill Monagle need to sit at the front but it would be nice to have their support.

What else could I do to help? Have you heard any more from the present owners of the mill? Do any of them plan to attend? I will certainly plan to be at the town office early.

Just a thought: I would be surprised if the question of taxes does not come up.

Sue

Quoting Pat Flood <patricksaflood@adelphia.net>:

- > Dear Sue and Tom,
- > I will be happy to moderate. I'd just need to know the names and
- > titles of the people who will be presenting, and the 3 or 4 items to
- > place on an agenda, which I will have available for people to pick up when they come in.
- > Also it would be good to have contact info of the key DEP people that
- > we could also have available. I'm not sure what the room has for a
- > screen. I assume you'll want one Tom?
- >
- > We would have the presenters sit at the Town Council's table and speak
- > from there (there are microphones) or from a podium that's available;
- > whichever works best for you.
- >
- > Perhaps we could all meet at the room a few minutes ahead of time.
- >
- > Best wishes, Pat Flood State Representative Winthrop and Readfield
- > 395-4915
- >
- > -----Original Message-----
- > From: sue.neal@maine.edu [mailto:sue.neal@maine.edu]
- > Sent: Monday, August 06, 2007 5:23 PM
- > To: Benn, Tom
- > Subject: Re: FW: Winthrop excavation
- >
- > Hi Tom,
- > I was at the site this morning and spoke with the guys at work there (EPI).
- > At the time they were expecting someone from DEP to arrive and go over
- > the next move.

> I do not want to moderate the meeting. I am not very good at that
> sort of thing. I believe Pat Flood will moderate. I will be there and
> will sit with all of you and be available to answer any questions from
> the floor. I think your plan to provide an overview and update on
> clean-up and technical information is great. We know what we know and
> can only solve the problems as we go along.
> We know that some folks will be grateful for the effort that DEP, the
> lake association, EPI and others are putting into this project. We
> also know that others are going to be "up-in-arms".

>
> Thanks for the update. Will you be at the site in the morning (Tuesday)?

>
> Sue

>
>
>
> Quoting "Benn, Tom" <Tom.Benn@maine.gov>:

>
>> Sue: Hello. Attached is a brief update on DEP Clean Up at the Mill
>> in Winthrop. We're going to be cutting the retaining wall out in
>> order to expose the contamination. Wall integrity and the amount of
>> oil that is hung-up behind it contribute to the need to remove it.
>> I've attached a copy of John Beane's site visit report from Friday.
>> I'll keep you posted on progress. Take care, Sue.

>>
>> I have a question for you about your role at the upcoming meeting.
>> Did you want to moderate it or have you had any thoughts on our
>> presentation? My bosses got involved last week, and I'm ok with that.
>> I just wanted to be sure that we come to the meeting prepared as you
>> see the need. I would like to provide an overview of our (DEP) work,
>> with some technical information, and where we are heading with regard
>> to the clean-up at the Mill, but I want to be sure that we meet your
>> needs, and the needs of the Association. We have not determined the
>> best way to address the contaminated sediments, but we are seeing
>> what is available and is reasonable to do.

>>
>> I will also contact Representative Flood as well to see what his
>> expectations are. THX, Sue.

>>
>> Tom

>>
>> *****

>>
>> _____
>>
>> From: Beane, John E
>> Sent: Friday, August 03, 2007 2:07 PM
>> To: Blanchard, Peter J; Benn, Tom; Lavalley, Fred C
>> Subject: Winthrop excavation

>>
>>
>> I made a site visit this morning to monitor progress. The EPI crew

>> had advanced the excavation to the bedrock surface along the base of
>> the retaining wall from the storm drain to the boiler room wall, and
>> about five feet back from the wall.

>>
>>
>>
>>
>>

>> There was plenty of oil-contaminated soil all along the wall. Water
>> entered the bottom of the excavation at the ends and up-slope side,
>> and it appeared to be draining out through the soils to the stream
>> under the wall. Oil was floating on the water.

>>
>>
>>

>> The wall sits on three or four feet of silty gravel. They appear to
>> have poured a ~4" slab to flatten the bottom of the hole, then they
>> poured the ~3' thick and 8' tall footing, and finally the ~10' tall
>> and 8" thick wall. There is a rectangular prism of contaminated soil
>> about three feet thick, perhaps five feet wide and the length of the
>> wall that is under the wall that will not be remediated if the wall
>> remains in place. Of course it's the hottest soil at the site.

>>

>> The boiler room foundation wall bounds the north western edge of the
>> excavation where it intersects the retaining wall at right angle. It
>> is brick, perhaps eight feet tall and sits on a rubble base. To
>> connect up with the 2005-06 excavation, that may need to be toppled.

>>
>>
>>

>> I would like to get the four of us on site Monday morning to talk it
>> over. Maybe Brian Fons and Ken Lajoie would be useful participants too.
>> What do you think about 10:00 on Monday, after the Response staff
>> meeting?

>>

>> John E. Beane, C.G., Senior Geologist Maine Department of
>> Environmental Protection Bureau of Remediation and Waste Management
>> Division of Technical Services
>> (207) 287-7635

>>
>>
>>

>
>
>

>
> We would have the presenters sit at the Town Council's table and speak
> from there (there are microphones) or from a podium that's available;
> whichever works best for you.

>
> Perhaps we could all meet at the room a few minutes ahead of time.

>
> Best wishes, Pat Flood State Representative Winthrop and Readfield
> 395-4915.

>
> -----Original Message-----

> From: sue.neal@maine.edu [mailto:sue.neal@maine.edu]

> Sent: Monday, August 06, 2007 5:23 PM

> To: Benn, Tom

> Subject: Re: FW: Winthrop excavation

>

> Hi Tom,

> I was at the site this morning and spoke with the guys at work there (EPI).
> At the time they were expecting someone from DEP to arrive and go over
> the next move.

> I do not want to moderate the meeting. I am not very good at that
> sort of thing. I believe Pat Flood will moderate. I will be there and
> will sit with all of you and be available to answer any questions from
> the floor. I think your plan to provide an overview and update on
> clean-up and technical information is great. We know what we know and
> can only solve the problems as we go along.

> We know that some folks will be grateful for the effort that DEP, the
> lake association, EPI and others are putting into this project. We
> also know that others are going to be "up-in-arms".

>

> Thanks for the update. Will you be at the site in the morning (Tuesday)?

>

> Sue

>

>

>

> Quoting "Benn, Tom" <Tom.Benn@maine.gov>:

>

>> Sue: Hello. Attached is a brief update on DEP Clean Up at the Mill
>> in Winthrop. We're going to be cutting the retaining wall out in
>> order to expose the contamination. Wall integrity and the amount of
>> oil that is hung-up behind it contribute to the need to remove it.
>> I've attached a copy of John Beane's site visit report from Friday.
>> I'll keep you posted on progress. Take care, Sue.

>>

>> I have a question for you about your role at the upcoming meeting.
>> Did you want to moderate it or have you had any thoughts on our
>> presentation? My bosses got involved last week, and I'm ok with that.
>> I just wanted to be sure that we come to the meeting prepared as you
>> see the need. I would like to provide an overview of our (DEP) work,
>> with some technical information, and where we are heading with regard
>> to the clean-up at the Mill, but I want to be sure that we meet your

>> needs, and the needs of the Association. We have not determined the
>> best way to address the contaminated sediments, but we are seeing
>> what is available and is reasonable to do.

>>

>> I will also contact Representative Flood as well to see what his
>> expectations are. THX, Sue.

>>

>> Tom

>>

>> *****

>>

>>

>>

>> From: Beane, John E
>> Sent: Friday, August 03, 2007 2:07 PM
>> To: Blanchard, Peter J; Benn, Tom; Lavallee, Fred C
>> Subject: Winthrop excavation

>>

>>

>> I made a site visit this morning to monitor progress. The EPI crew
>> had advanced the excavation to the bedrock surface along the base of
>> the retaining wall from the storm drain to the boiler room wall, and
>> about five feet back from the wall.

>>

>>

>>

>>

>>

>> There was plenty of oil-contaminated soil all along the wall. Water
>> entered the bottom of the excavation at the ends and up-slope side,
>> and it appeared to be draining out through the soils to the stream
>> under the wall. Oil was floating on the water.

>>

>>

>>

>> The wall sits on three or four feet of silty gravel. They appear to
>> have poured a ~4" slab to flatten the bottom of the hole, then they
>> poured the ~3' thick and 8' tall footing, and finally the ~10' tall
>> and 8" thick wall. There is a rectangular prism of contaminated soil
>> about three feet thick, perhaps five feet wide and the length of the
>> wall that is under the wall that will not be remediated if the wall
>> remains in place. Of course it's the hottest soil at the site.

>>

>> The boiler room foundation wall bounds the north western edge of the
>> excavation where it intersects the retaining wall at right angle. It
>> is brick, perhaps eight feet tall and sits on a rubble base. To
>> connect up with the 2005-06 excavation, that may need to be toppled.

>>

>>

>>

>> I would like to get the four of us on site Monday morning to talk it
>> over. Maybe Brian Fons and Ken Lajoie would be useful participants too.

>> What do you think about 10:00 on Monday, after the Response staff
>> meeting?

>>
>> John E. Beane, C.G., Senior Geologist Maine Department of
>> Environmental Protection Bureau of Remediation and Waste Management
>> Division of Technical Services
>> (207) 287-7635

>>

>>

>>

>

>

>

Benn, Tom

From: Aho, Hank
Sent: Monday, August 06, 2007 3:52 PM
To: Benn, Tom
Subject: FW: Your Welcome

-----Original Message-----

From: Seel, George J
Sent: Monday, August 06, 2007 11:33 AM
To: Hunter, Bruce E; Lavallee, Fred C; Parker, Barbara T; Aho, Hank; Whittier, Scott; Hyland, Mark
Cc: Hodgkins, Nick; Smith, Troy T
Subject: FW: Your Welcome

FYI. Rich's comments are a helpful supplement to the report and its characterization of the comments from the two consultants interviewed. I also provided a copy of the audit report to Keith Taylor at St. Germaine Assoc., who was also interviewed, with a thank you note. Since Tom Schwarm has been critical of the D-tree in the past, I also sent him a copy. I figured once Germain Assoc. received a copy, MODA would get a copy and then Tom. So he might as well get it directly from us. Time will tell if that was prudent. No doubt half the attorneys in Portland have a copy as well by this time. At least we saved money on postage this way.

George

-----Original Message-----

From: Rich Campbell [mailto:rcampbell@cegenvironmental.com]
Sent: Monday, August 06, 2007 10:31 AM
To: Seel, George J
Subject: Your Welcome

George, thanks for the copy of the D-Tree audit. In regards to your note, I would be proud if the D-Tree audit represented my "dirty laundry". I hope the audit accomplished what was intended. I also hope that no significant changes are caused by the audit. I like the D-Tree and other than changing the word "non-attainment" to something else or supplying a standard format to determine if a site is Baseline, I would not change it.

I was wondering if an improvement could be if you listed how the user determined the site to be Baseline. For instance, boxes could be inserted documenting a variety of sensitive receptor surveys. The sensitive receptor survey boxes could range from just personal knowledge to door to door surveys.

One thing I like about guidelines is that it gives the user some flexibility in determining a solution that makes sense for that site. Rigid guidelines are not always good, but there is something to say for providing some sort of standard consistency and to understanding how the user determined the site

selection category.

Rich Campbell
Maine & NH Certified Geologist
207-253-1990
www.cegenvironmental.com

Benn, Tom

From: Haefele, Julie F.
Sent: Monday, August 06, 2007 1:39 PM
To: Benn, Tom
Subject: RE: Winthrop Oil Spill

Thanks again Tom.

Julie

From: Benn, Tom
Sent: Monday, August 06, 2007 1:38 PM
To: Haefele, Julie F.
Subject: RE: Winthrop Oil Spill

Julie: The oil is on the bedrock and exposed in the excavation at the Mill. We have seen 30 - 40 gallons of product at the bottom of the excavation: That's a ballpark estimate. The cofferdam is collecting product that goes under the wall. A small amount of oil may be getting by the dam, but that small amount of oil is being caught by the boom, actually by the several booms downstream. Peter Blanchard was going to check the booms this afternoon.

Tom.

From: Haefele, Julie F.
Sent: Monday, August 06, 2007 1:25 PM
To: Benn, Tom
Subject: RE: Winthrop Oil Spill

Hi Tom,

Thanks for getting back to me. Is the oil in the bedrock that you're finding? When you say "a lot of oil", what does that mean?

Also, is it safe to say that this oil is not making its way to Mill Stream and Annabessacook or can you not say that at this time?

Thanks Tom.

From: Benn, Tom
Sent: Monday, August 06, 2007 1:21 PM
To: Haefele, Julie F.
Subject: RE: Winthrop Oil Spill

Julie: We are finding a lot of oil. We are going to remove the retaining wall that is located stream-side of the excavation. I had hoped that it would not need to be removed, but we have stability concerns with it, and getting the remaining oil out. The excavation of it is getting complicated. We're in the right place and working smart.

I'll forward an e-mail summary report from John Beane who was on-site on Friday under separate note. THX for your concern, and I'll keep you posted.

Tom Benn, Remedial Project Manager

From: Haefele, Julie F.
Sent: Thursday, August 02, 2007 7:24 AM
To: Benn, Tom
Subject: Winthrop Oil Spill

Good Morning Tom,

Just checking in on the cleanup status. We noticed that the parking lot behind the old mill is being dug up. Are they still finding pockets of oil?

Thanks,

Julie

Benn, Tom

From: Beane, John E
Sent: Thursday, August 02, 2007 4:21 PM
To: Benn, Tom; Blanchard, Peter J; Lavallee, Fred C
Subject: Excavation at Winthrop

I went to Winthrop this morning to monitor progress. They had completely removed the walls of the pump house foundation, but the floor slab remained. The EPI crew were working out among themselves how to ramp down into the hole, given the constraints of surrounding utilities and structures. While I was there they carefully exposed the upper surface of the concrete storm drain pipe at the southern edge of the hole.

I returned with Fred in the mid-afternoon, and we found that they had exposed the concrete storm drain along its length and had hammered up and removed the floor slab of the pump house foundation. They had encountered oil-contaminated soil at the level of the pump house basement floor, between the pump house and the retaining wall.

Jeremy indicated that the "sprinkler guy" had come out yesterday and together they determined that the problematic valve and associated pipe in the southeast corner of the excavation were not live, and that the pipe had been cut and capped in the dye house.

There is a tough decision approaching as to how much soil removal can be done around the concrete storm drain pipe, and to the south of it. I indicated that we should chase the oil-contaminated soil, even if we have to remove the pipe and replace it. It would be good to have one or more of us on-site at that point (probably Monday or Tuesday) to weigh in on that decision.

Today's pics are on the H: drive.

John

John E. Beane, C.G., Senior Geologist
Maine Department of Environmental Protection
Bureau of Remediation and Waste Management
Division of Technical Services
(207) 287-7635

Benn, Tom

From: Blanchard, Peter J
Sent: Thursday, August 02, 2007 12:34 PM
To: Lavallee, Fred C; Hyland, Mark
Cc: Benn, Tom; Beane, John E
Subject: RE: Pre-Meeting Winthrop Commerce Center

I made a short PowerPoint presentation at the last two Lake Association meetings (August 05 and 06). They were reasonably well attended and people were glad to get the info. The first year there was one guy who brought his bass boat and claimed he had a bit of oil along the waterline. This rubbed off readily with some mild soap and water. No-one seemed to be upset about that. The second year a property owner attended and stood to make the argument that DEP had not done anything for him and his loss of use. I responded that we had evaluated his property and paid to have his belongings professionally cleaned and performed manual removal of oiled vegetation along the shoreline. This issue too seemed to pass over without too much emotion.

This year, we may have some more upset people. I told everyone last August, I thought the oil had been removed. I was wrong. I am willing to say that I was wrong. It is tough to say how many people may choose to show up at this meeting. It was my impression that Pat Flood was encouraged to hold such a meeting by a property owner who is pursuing a 3PDC and would like to get as much public air time as possible. The Lake Association folks on the other hand as well as some other property owners that I have talked to seem quite supportive of our efforts.

Format: I think a combination of poster session and plenary presentation would meet the objectives of getting out the info.

Peter J. Blanchard
Division of Response Services
phone: (207) 287-3692
e-mail: peter.j.blanchard@maine.gov

From: Lavallee, Fred C
Sent: Thursday, August 02, 2007 8:38 AM
To: Hyland, Mark
Cc: Benn, Tom; Blanchard, Peter J; Beane, John E
Subject: RE: Pre-Meeting Winthrop Commerce Center

Will forward this to others so they can weigh in on the poster session format. They also will have a better feel about the reception we'll get. The downside of the poster session format is that there's a lot of repeating and backing up for folks who've just circulated to your station. Would also hate to have the audience expect an oral presentation and not put one on.

Maybe Tom can ask Sue Neal or Rep. Flood what meeting format they think works best.

From: Hyland, Mark
Sent: Wednesday, August 01, 2007 5:00 PM
To: Lavallee, Fred C

Subject: RE: Pre-Meeting Winthrop Commerce Center

Fred,

I'm not sure how these have gone in the past, whether they have been adversarial or not. My thought was to make this a poster session rather than a formal presentation and let people go to the "station" they have questions about. Maybe have stations on geology, treatment systems, previous clean-up, lake water quality or whatever. I fear a formal presentation sets up an us against them situation and could allow grandstanding by parties that are unhappy with a narrow part of the story. We could have staff at each station to talk to people individually. Will that work or is a formal presentation a better way to present the information? Thanks, mark

From: Lavallee, Fred C
Sent: Wednesday, August 01, 2007 4:32 PM
To: Edwards, Sherrie M
Cc: Hyland, Mark; Beane, John E; Benn, Tom; Blanchard, Peter J; Seel, George J
Subject: Accepted: Pre-Meeting Winthrop Commerce Center
When: Monday, August 13, 2007 1:30 PM-3:00 PM (GMT-05:00) Eastern Time (US & Canada).
Where: 2A

Can make it.

Mark, we'll have to script this meeting and maybe do a dry run before the 13th. Left to our own devices, the four of us would probably make it a technical presentation with some photos and a few PP slides. I believe we can cover the information of interest to everyone in about half an hour (so we don't put folks to sleep) and fill in details during Q&A. We hope to get Linda Bacon to attend, to speak to lake impact and sediment remediation issues.

Your thoughts on format/content/order/length/etc.? What role do you want? Do you know what roles other players (Rep. Flood, CWD, Cobossee Lake Assn.) expect to play? Who expects to moderate? Does D Littell or anyone from O/C want a piece?

BTW, expenditures to date and projected costs for the rest of the work are crowding the \$1 million Fund coverage ceiling.

George - For budgeting purposes, future expenditures for the rest of the anticipated work are ~ \$300K.

Benn, Tom

From: Brian Fons [bfons@envprojects.com]
Sent: Wednesday, August 01, 2007 11:10 AM
To: Benn, Tom
Cc: bsellick@envprojects.com
Subject: Remediation Estimate
Attachments: MDEP Winthrop Remediation.xls

Hi Tom

Here is the remediation estimate. A couple of notes:

- 1) We put in 750 tons of contaminated soils/bedrock.
- 2) We put in 2 months for the work, it should take less but we wanted to get a solid number for you guys.
- 3) We carried flowable fill – as discussed, we could lay fabric in against the wall and pour flowable fill against the base to prevent any future washout underneath the concrete wall.
- 4) We carried \$2500 for utility restoration. With the volume of pipes underground there, we are going to end up replacing some of them.

Let us know if you have any questions! We are going to work on the invoice next for the work including the sandbags, etc.

Brian

Brian Fons
Environmental Projects, Inc.
Phone (207) 786-7390
Fax (207) 786-7396
www.EnvProjects.com
www.EnvDepot.com

"We cannot do everthing at once, but we can do something at once" - Calvin Coolidge

Benn, Tom

From: Blanchard, Peter J
Sent: Friday, July 27, 2007 2:11 PM
To: Beane, John E; Lavallee, Fred C; Benn, Tom
Cc: Bacon, Linda C
Subject: Winthrop/Linda Bacon

I spoke to Linda this PM to discuss a date for her to get up to speed on the #6 spill to Mill Stream and Annabessacook Lake.

She is coordinating a lake sampling program and is really busy over the next couple of weeks. We left it that she will contact me as soon as she can free up a day, possibly the week of August 6. The purpose of the site visit from Linda's perspective will be to become familiar with the habitat in which the spill occurred. She does not intend to collect any samples. To accomplish this objective, we could walk the shoreline of Mill stream from both ends and then take a small boat tour around Annabessacook lake. I can provide the boat. Let me know if this meets everyone's needs.
Thanks, Peter

Peter J. Blanchard
Division of Response Services
phone: (207) 287-3692
e-mail: peter.j.blanchard@maine.gov

Benn, Tom

From: Beane, John E
Sent: Thursday, July 26, 2007 2:10 PM
To: 'lavalleefl@verizon.net'; Benn, Tom; Blanchard, Peter J; Lavallee, Fred C; Dougherty, Sean
Subject: Fracture Flushing 7-26-07

We flushed wells B-7B, B-8B and B-9 with a full tank trailer of water from 9:00 until 11:35 this morning. The water temperature was only about 95° this time, since there was less time for warming it. It was 110° to 115° on Monday. We flushed at a higher flow rate this time, 13 GPM into B-7B, 11 gpm into B-8B and 9 gpm into B-9. We had used just 6 gpm in each well on Monday.

Oil emerged from the gravel at the base of the retaining wall in discrete locations, as it did on Monday. It also emerged from "boiling sand springs" in the gravel as much as four feet from the base of the wall in the area of B-7B, indicating the location where a water-bearing (and oil-bearing) fracture surfaces beneath the bed of the stream. We saw no oil emerging from the stream bed outboard of the coffer dam.

In mid-flush we moved the pipe from B-8B to B-6 to test whether there was additional oil to be mobilized at that location. Very little additional oil was mobilized at that location, and the amount of oil emerging in the area of B-7B and B-8B decreased substantially and abruptly. We returned the pipe to B-8B after about ten minutes.

The higher flow rate of today's test appeared to be very effective.

The underflow dam continued to effectively capture nearly all the oil. They didn't use the drum skimmer today.

The abundance of emerging oil decreased continuously throughout the flushing event until at the end of the test very little oil at all was emerging. My own guess is that we mobilized several gallons of oil today, but not more than ten gallons. I am comfortable that we are now at the point of rapidly diminishing returns. I am happy to abandon this strategy in favor of excavation.

John E. Beane, C.G., Senior Geologist
Maine Department of Environmental Protection
Bureau of Remediation and Waste Management
Division of Technical Services
(207) 287-7635

7/30/2007

Benn, Tom

From: Hyland, Mark
Sent: Monday, July 23, 2007 9:28 AM
To: Benn, Tom; Blanchard, Peter J; Lavallee, Fred C
Subject: FW: General Public Info Meeting re Annab Lake Spill

All,
When would be a good time to make a presentation the lake association or a public information meeting?

-----Original Message-----

From: Pat Flood [mailto:patricksaflood@adelphia.net]
Sent: Friday, July 20, 2007 10:08 AM
To: Hyland, Mark
Subject: FW: General Public Info Meeting re Annab Lake Spill

Hello Mark,
Are there any dates that would work for you or Peter for this proposed informational meeting?...Pat

-----Original Message-----

From: sue.neal@maine.edu [mailto:sue.neal@maine.edu]
Sent: Saturday, July 14, 2007 3:49 PM
To: Pat Flood
Cc: 'Hyland, Mark'
Subject: Re: General Public Info Meeting re Annab Lake Spill

Hi Pat, The plan sounds pretty good to me. At this point, the only day I am not available is the 8th of August.
Sue

Quoting Pat Flood <patricksaflood@adelphia.net>:

> Dear Sue and Mark,
>
> Several months ago we discussed the value of having a public
> information sharing meeting in Winthrop to discuss the recent oil
> spill
> into Annab Lake.
> I also discussed it with Commsr. Littell and Scott Cowger and there
> seemed to be consensus it would be worthwhile. I was hoping that we
> could do that sometime in late July or early August. I would arrange
> for the public notification of the meeting with our local weekly and
> daily papers and with Sue's help thru the Lake Assn. I would envision
> a brief intro and then an update by you Mark or Peter Blanchard on the

- > current situation..some q/a, and that's about it. I expect we could
- > use the town hall once we have a date established and I expect the
- > meeting would take approx one hour start to finish. This wouldn't be
- > a hearing or a problem-solving session..just informational.
- > I mentioned it to Pete and to Bill Monagle (Cobb Watershed) at the
- > Cobbosee Watershed District meeting a few months back and it seemed
- > like a good idea to them too.
- > If this sounds OK to you, could each of you please give me a few dates
- > to work with and I will check on availability of town hall space.
- > Could we please shoot for the July 30 to August 15 timeframe?
- >
- > Thank you for your consideration...Pat Flood State Representative
- > Winthrop and Readfield 395-4915
- >

Benn, Tom

From: Blanchard, Peter J
Sent: Thursday, July 19, 2007 9:41 AM
To: 'bfons@envprojects.com'; Benn, Tom; Lavallee, Fred C; Beane, John E
Subject: RE: Skimmer - Power - Water

Yes, the hose is long enough and we will plan to bring extra sections to allow for replacement if the # 6 oil starts to clog them. I checked out the coffer dam this AM and I am confident the skimmer will work in that area. There will be challenges with the head that the skimmer pump has to overcome to get the heavy oil up into the parking lot, but we can work around that if we need to stage drums on the other side of the river, then remove them later with the boom truck or other means. I will plan to pump into drums rather than the 600 gallon tank trailer because they will be easier to dispose and wont present a big de-con headache. The trailer is better for lighter oil/water mixtures.

Brian, could you guys plan to bring 6 or 8 (55 gallon) open top drums on Monday?

Peter J. Blanchard
Division of Response Services
phone: (207) 287-3692
e-mail: peter.j.blanchard@maine.gov

-----Original Message-----

From: bfons@envprojects.com [mailto:bfons@envprojects.com]
Sent: Wednesday, July 18, 2007 5:19 PM
To: Blanchard, Peter J; Benn, Tom; Lavallee, Fred C; Beane, John E
Subject: RE: Skimmer - Power - Water

Boom truck is on site for a few more days as a contingency, we may need it for stuff like the skimmer, bags of sorbents, etc.

Do you have enough hose to get it up into the parking lot?

Brian

---- Original message ----

>Date: Wed, 18 Jul 2007 16:38:34 -0400
>From: "Blanchard, Peter J" <Peter.J.Blanchard@maine.gov>
>Subject: RE: Skimmer - Power - Water
>To: "Benn, Tom" <Tom.Benn@maine.gov>, "Lavallee, Fred C"
><Fred.C.Lavallee@maine.gov>, "Beane, John E" <John.E.Beane@maine.gov>,
>"Brian Fons, Environmental Projects, Inc." <bfons@envprojects.com>
>
> Hi,

>
>
> Thanks everyone for keeping me in the loop. I was
> able to review the pictures posted on the H drive
> and it looks like great progress is being made.
>

>
>
> I will bring the skimmer over and see if we can get
> that going with the assistance of EPI's boom truck.
> Is the boom truck still on site? The skimmer needs
> to be placed into the coffer dam and needs about a
> foot of water to float. The unit is self powered
> with a gasoline engine running hydraulic power pack,
> so no need to get electricity connection. Sounds
> like we should get it in place and ready for the
> flush on Monday. I am available tomorrow (7/19) if
> that works for others. We can pump the oil into the
> tank trailer on site.
>

> Have not heard back from Linda Bacon reference
> schedule for next week sediment samples. I have
> proposed either the 25th or 26th.
>

> Peter
>

> Peter J. Blanchard
> Division of Response Services
> phone: (207) 287-3692
> e-mail: peter.j.blanchard@maine.gov
>

>
>

> From: Benn, Tom
> Sent: Wednesday, July 18, 2007 3:47 PM
> To: Lavalley, Fred C; Blanchard, Peter J;
> Beane, John E; Brian Fons, Environmental Projects,
> Inc.
> Subject: WCC: Skimmer - Power - Water
>

> Hi guys- just spoke with Lou Carrier.
> Electricity: Lou steered me away from access to
> power thru old dyehouse, but did offer power thru
> the overhead door near the chimney. Lou will be
> around tomorrow and Friday.
>

> Contacted Dan Brooks at Winthrop FD can get the
> tanker filled for us, in fact Dan Brooks
> appreciated the request. I told him tanker is
> scheduled to arrive tomorrow or Friday. If we tap
> into the hydrant we'll be metered...We'll work
> that out if need be. Dan was going to check with
> his contacts to see if something simpler can be
> worked out for us. I'll keep you posted. THX
>

> Tom

>

> From: Lavalley, Fred C
> Sent: Wednesday, July 18, 2007 1:48 PM
> To: Blanchard, Peter J
> Cc: Benn, Tom; Beane, John E
> Subject: Skimmer

> Peter -

> Just now picked up your e-mail from Monday -
> disregard the voicemail I left you this
> morning.

> Tom and I visited the site this morning. The
> cofferdam seems to be containing oil just fine,
> and there's already plenty to contain. Jerney
> had it cleaned out yesterday afternoon, and
> there's already a fresh layer completely
> covering the water surface. The pond extends
> only 20' or so upstream from the foot of the
> cofferdam. If they lined it any farther
> upstream, flushed water would daylight under
> the liner and not be captured. There's enough
> groundwater discharging into the coffer and
> enough leakage through the seams so that no
> inlet and outlet pipes are needed. But the pond
> - smaller than I envisioned - seems to be
> getting it all: not a bit of sheen going under
> the bridge. The rain has raised the water table
> a bit, and there are seeps from the retaining
> wall at several locations, all the way back to
> the old boiler room. The green PVC pipe that
> takes water over the cofferdam is flowing
> briskly.

> EPI will be bringing a tanker to the site late
> in the week and setting up the Thaw-Zall. Tom
> is contacting the Winthrop FD to see if they'll
> fill the tanker from a hydrant. Failing that,
> EPI can fill it from the stream with a trash
> pump, but this would take several hours. The FD
> could do it in twenty minutes. They will heat
> the tanker through the weekend so there'll be
> hot water for a start on the flushing next
> Monday. I'll be out of town for the week, John
> and Tom will be running the show. Look forward
> to the pictures.

> Considering how much product we're getting
> without flushing, Jerney thinks a belt skimmer

> will be needed for removing product, so we'd
> gladly take you up on your offer of Response's
> skimmer. There's room for it on the "beach" at
> the foot of Poison Ivy Island. Power (110v, I
> hope) could come from a receptacle in the
> dyehouse. If you'll call Jeremy (650-5512 cell)
> and set a time for deploying the skimmer, I'd
> be glad to help. Will be available all day
> Thursday and Friday.

> To All -

> BLWQ did not have a record of Peter's
> conversations earlier in the year re installing
> a cofferdam. I gave Mike Mullen an
> after-the-fact application for a NRPA
> permit-by-rule yesterday.

> Fred Lavallee, P.E.
> Division of Technical Services
> Bureau of Remediation & Waste Management
> Maine Department of Environmental Protection
> tel: (207) 287-7677
> e-mail fred.c.lavallee@maine.gov

Benn, Tom

From: Kenneth O Lajoie [klajoie@lajoiebros.com]
Sent: Wednesday, July 18, 2007 9:01 AM
To: Benn, Tom
Cc: Lou Carrier; Gene Green; 'John Lajoie'
Subject: WCC

Tom,

Thanks for the very informative meeting last Friday. We appreciate being included in the planning for this phase of the project. It sounds like we have a good plan to finally solve this issue.

One issue we didn't discuss was parking lot drainage. Should we be installing catch basins to collect and redirect the parking lot run off? The water from the parking lot runs over the wall and directly into the stream. We're concerned that this may erode the soil at the base of the retaining wall. Please let me know your thoughts on this issue.

Ken

Benn, Tom

From: Brian Fons [bfons@envprojects.com]
Sent: Tuesday, July 17, 2007 3:55 PM
To: Benn, Tom
Cc: 'Brian Sellick'
Subject: Winthrop/Water Flushing Operations
Attachments: MDEP Winthrop Wells.xls

Hi Tom,

Here is a cost estimate for the flushing work. I put in a two-man crew for two weeks along with two weeks of rental for the Thaw-Zall/fuel etc. We can probably have this set up Thursday/Friday so the water is cooking over the weekend and nice and hot on Monday AM. I figured two weeks would cover any contingency if this really starts pushing oil out.

Let me know if you have any questions, and if you need anything else. We will work up the soil removal in the next day or so, and also generate an invoice for work to date.

Brian

Benn, Tom

From: Lavallee, Fred C
Sent: Tuesday, July 17, 2007 8:52 AM
To: Benn, Tom; Beane, John E; Blanchard, Peter J
Cc: Mullen, Mike
Subject: WCC - NRPA Permit For Cofferdam

All -

Mike Mullen believes the application Pete filed last year is broad enough to include everything we have done and might do this year. He's not sure a PBR was officially issued, but will look up the e-mail exchanges. If BLWQ needs anything describing this year's proposed work, Mike will let me know and I'll provide it.

*Fred Lavallee, P.E.
Division of Technical Services
Bureau of Remediation & Waste Management
Maine Department of Environmental Protection
tel: (207) 287-7677
e-mail fred.c.lavallee@maine.gov*

Department of Environmental Protection
17 State House Station
Augusta ME 04330

June 30, 2007

To Whom it may concern:

I am writing this letter as a concerned neighbor and friend of John and Julie Haefle in Winthrop, Maine as well as a landowner and taxpayer myself. As you must be aware, ~~there have been several oil spills on Annabesacook Lake over the past three seasons.~~ These spills have damaged their land, their home and caused them to lose possible income in lot sales on the lake. As I understand it, there has been no compensation from the State for this, even though their lawyer claims they are due compensation.

John and Julie are good neighbors and since I moved into my home in 2000, have offered me access to the lake so I can exercise my dog and enjoy the lake myself. However, for the past two summers and this summer as well, I will not be able to take my dog to the lake since he will be covered with oil. This has happened to the Haefle's dogs and as a result, they have lost carpeting and furniture in their home. I would like to be able to enjoy the lake this summer but the threat of yet more oil covering my dog and damaging my property is not worth the risk.

My questions are these: why are the Haefle's not given compensation for the damages incurred when buried oil tanks spilled into the lake, and damaged their home? The state must be able to afford compensation. (They also had a new boat that year and had to take it out of the lake.) Why is this problem not taken care of so that others like the Haefle's and myself can continue to enjoy the lake? (Not to mention the continual damage that it must be causing to the cleanliness of the lake and to the wildlife.)

When the first spill occurred, we were told that after the first summer the lake would be useable again. Three summers, although a mere annoyance to me, is ridiculous for homeowners like the Haefles' who can't use their dock, boat or sell pieces of land or use the lake themselves. Yet, the Haefles are still paying their taxes on the land that is now unsellable and unuseable. This to me, is a double standard that should be corrected.

For the sake of the lake and the people on it, I feel that this issue should be resolved in a timelier manner and that my neighbors should be compensated. Thank you for your consideration.

Sincerely,

Judy Mark
Winthrop ME
21 Holmes Rd
04364

TEAM MTO 6/21/2007 1-234

- Winthrop - TTD:

PLANS:

(STRATEGIZE)
(REVIEW PLAN)

- TASKS / STEPS / TRIAGE

- ✓ - extend height of coltside
- ✓ MIKE - complete boring next Friday (RECOVERY)
- pump down water @ pump station to expose pipe -
- ✓ EPI - VACUUM CONTAMINATED DEBRIS/SOIL
- ✓ EPI - extend length of Coltside Room
- cut vegetation -
- round up the "poison ivy"
- ✓ EPI - Remove the peninsula - (debris)
- ✓ EPI - PLACE ROOM BELOW THE FACTORY
- ✓ - * EXCAVATE THE ~~THIN~~ SOIL TO ROCK
- TRENCH BOX TO Bedrock
- ✓ - HEAT THE WATER (STORE)
- ✓ - PUSH THE EXCAVATION - collect
- ✓ → BACKFILL → COMPACT
- * Contact Land & Water "
- mtg w/ partners -
- mtg to discuss plans w/ A. Lakes Assoc
- Winthrop -

Benn, Tom

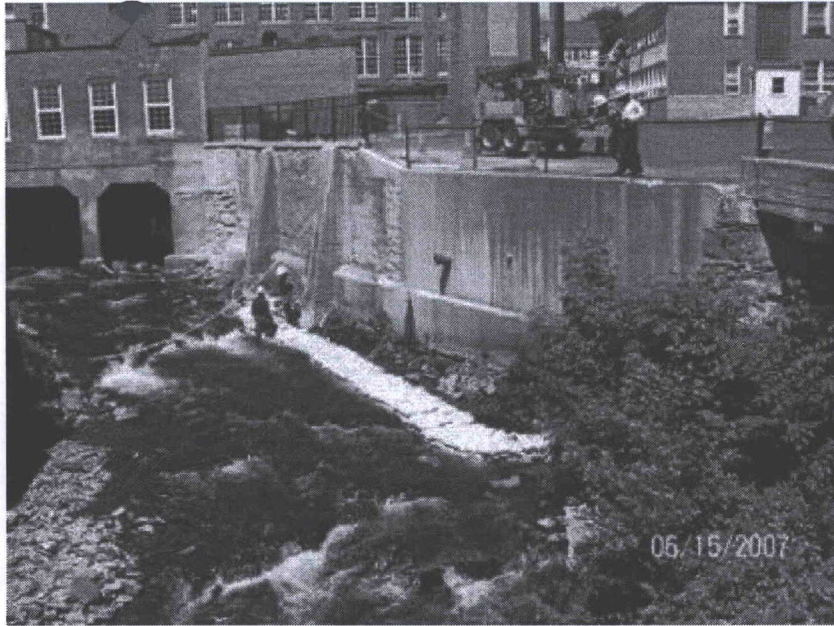
From: James, Mary R
Sent: Thursday, June 21, 2007 7:34 AM
To: DEP-BRWM List
Subject: Bureau Highlights for June 9–16, 2007

Division of Oil & Hazardous Waste Facilities Regulation

- Red Shield Environmental, LLC, Old Town. The Hazardous Waste Enforcement Unit and the Division of Solid Waste Management have reviewed the work plan to transfer ten 30-45 cubic yard roll-off containers of hazardous waste ash at Red Shield Environmental (RSE) into containers suitable for transportation. The transfer activity will occur the week of June 18th in a warehouse at RSE's Old Town facility, where the ash is currently stored. Decontamination and confirmation sampling will be conducted after the transfer is complete. In February and March 2007, testing determined that the ash must be handled as hazardous waste due to lead levels above the regulatory threshold (5 mg/L TCLP). The ash will be shipped to a licensed hazardous waste disposal facility by June 28, 2007.

Division of Remediation and Division of Technical Services

- Winthrop Commerce Center. A temporary coffer dam is being constructed to collect oil seeping out of a retaining wall adjacent to Mill Stream. The release occurred when a bedrock monitoring well drilled adjacent to the foundation of the boiler room was extended past the depth of the foundation, tapping into pockets of #6 fuel oil. Drilling operations were temporarily postponed and the coffer dam constructed to capture the free product. In addition, sediment samples were taken in the upper basin of Annabessacook Lake. The sampling results and other data collected will be used to determine how to best proceed with additional clean up. (Project Team: Tom Benn, Fred Lavalley, John Beane and Peter Blanchard)



Division of Response Services

Augusta Field Office

There were 14 spills reported to the Augusta office for the week. Spills of significance included:

- In Cushing, several 55-gallon drums were abandoned in a gravel pit. The drums were labeled as acetone and polyester resin, and testing confirmed the contents were as labeled. Initial field identification of the chemicals was hampered by the pungent odor from a freezer full of deer meat also abandoned in the gravel pit. Soil contaminated by the drums was removed along with the drums and the remaining contents. The drums appear to be from a closed boat building business in the area. The case was referred to enforcement for further action. (Responders: Jason Fish and Peter Blanchard)



- In Mount Vernon, a resident reported that a white solid apparently spilled on the side of the road was killing the vegetation. The nature of the substance and how it was spilled are being investigated. (Responder:

Benn, Tom

From: Steve Cartwright [scartwright@centralmaine.com]
Sent: Wednesday, June 20, 2007 3:59 PM
To: Benn, Tom
Subject: story so far

**Tom,
check this out and let me know if I've got anything wrong here. Thanks.**

SCartwright 6/20/07 with supplied art
By STEVE CARTWRIGHT
Staff Writer

WINTHROP — An oil spill on Mill Stream that stems from the old Carleton Woolen Mill appears to be a problem that just won't go away. "There are a lot more questions than there are answers," said Tom Benn, project manager for the Department of Environmental Protection's Bureau of Remediation and Waste Management. He said the daily discharge is slow, but "overall, we certainly don't want to see any oil going into the stream. A DEP crew has been coping with the continuing leakage since April, and at least another month of work is anticipated. Expenses so far have reached \$500,000, and if they hit the \$1 million mark, the state will try to recover costs from responsible parties. Benn said a temporary coffer dam set up this week will help monitor and contain oil, as will eight to 10 wells drilled along the stream bank into bedrock. Eventually, the wells could be used to try to pump out underground oil. Alternatively, the DEP could decide to excavate the banking, removing soil and oil at the same time. This was done for a similar spill that occurred at the mill in April 2005, following heavy rains. First detected after the Patriots Day storm, the leaking No. 6 industrial heating oil continues to pollute the downtown stream that links Maranacook Lake to Annabessacook Lake. Several hundred gallons of oil are believed to have been carried downstream and into Annabessacook Lake during the storm's high water runoff, even though DEP workers swiftly boomed the outlet of the stream and started mopping up oil with pads. The booms were being readied for spring runoff as a precaution even before a nearby resident noticed an oil slick on the stream and called authorities. Much of the oil now seeping from the walled bank of the stream is being contained and recovered through a coffer dam and two boomed areas, Benn said. Meanwhile, the DEP crew has been sampling sediment in the nearby upper basin of Annabessacook Lake, and that data will be evaluated, Benn said. "Our team has been working hard to protect the environment and gather information in order to assess damage, stop additional discharges and clean up what we can," he said. Environmental Projects, an Auburn firm, has been contracted to help at the Mill Stream hazardous waste site. "They're taking it pretty seriously," said Winthrop Town Manager Cornell Knight. The 200,000 square foot Carleton Woolen Mill, sitting on 10.5 acres in the middle of Winthrop village, is owned by Winthrop Commerce Center LLC. Lou Carrier, president, was not immediately available for comment.

Steve Cartwright — 623-3811, Ext. 435
scartwright@centralmaine.com

Steve Cartwright
Kennebec Journal
274 Western Avenue
Augusta, Maine 04330
623-3811 extension 435
1-800-537-5508
scartwright@centralmaine.com

*Coffer Dam
20,000 gallon
- extraction wells - soil excavation*

Benn, Tom

From: Benn, Tom
Sent: Friday, June 15, 2007 4:27 PM
To: Aho, Hank; Hyland, Mark; Demkowicz, Bob A; Blanchard, Peter J; (sue.neal@maine.edu); Wendy Dennis (cwd@fairpoint.net); Parker, Barbara T; Ken Lajoie (klajoie@lajoiebros.com); Lou Carrier (winthropcommerce@ctel.net); Beth Young (winceo@ctel.net); Seel, George J; Hunter, Bruce E
Cc: Brian Fons, Environmental Projects, Inc.
Subject: Winthrop Mill Stream Coffe Dam Construction pics and Annabessacook Lake Sediment Sampling
Attachments: 100_0591.JPG; 100_0581.JPG; 100_0582.JPG; 100_0583.JPG; 100_0584.JPG; 100_0585.JPG; 100_0586.JPG; 100_0587.JPG; 100_0588.JPG; 100_0589.JPG; 100_0590.JPG; 100_0580.JPG

End of Week Summary for DEP's Work in Winthrop:

Good afternoon. Below is a brief update on our work efforts for the past week. Attached are some photos taken about an hour ago of the temporary containment coffer dam that EPI is constructing at the Winthrop Commerce Center. DEP Engineer Fred Lavallee, John Beane and I met with contractors from EPI on-site on Tuesday to devise a plan, and set out the work.

A bedrock monitoring well advanced outside the extent of boiler room's foundation released oil into Mill Stream this past week. We postponed drilling operations in order to set up a collection dam for free product which was being released into the stream. On Monday, June 18th DEP will be resuming the installation of bedrock wells with a plan to complete the work by June 29th.

In another task, the DEP team obtained sediment sampling of the upperbasin of Annabessacook Lake. That work was conducted on Monday, June 11th. Data will be pulled together and evaluated as soon as we are able.

DEP Responder Peter Blanchard has been providing technical advice and assistance to us for the coffer dam construction as well as helping us to sample lake sediments. We continue to gather data and we will determine how to best proceed with additional clean up. We will continue to provide updates, and our team has been working hard to protect the environment and gather information in order to assess damage, stop additional discharges, and clean-up what we can. Thank you for your support.

6/15/2007

Benn, Tom

From: Benn, Tom
Sent: Tuesday, June 12, 2007 10:04 AM
To: 'sue.neal@maine.edu'
Cc: Beane, John E; Lavallee, Fred C; Aho, Hank; Seel, George J; Hyland, Mark
Subject: Boom Cleaning, Stream Sampling and Drilling Update in Winthrop

Hi Sue: I understand that EPI is out there this morning doing multiple items for us.

Yesterday's basin sampling found small oil entrained in sediments. The globules were liberated when we were disturbing the bottom, so much so that it caused a waterline stain on the DEP boat. It is more widespread than we were expecting. Right now we're concerned that by doing any active digging, the remedy may be worse than leaving it there. It will probably be some time before lab test data comes in. The guys are moving ahead in putting together a report on the sampling.

The drilling program is progressing at the mill. On Friday, we have found oil in one of the borings which is located just outside the boiler room foundation. Today, we moved to drill the borings that are located in the boiler room footprint. We will be talking with EPI to possibly install a collection system at the Mill Stream edge to collect any releases from the drilling. I will be getting an update from John Beane on the work.

Also, when would be a good time to update you folks on our findings?

Tom Benn

-----Original Message-----

From: sue.neal@maine.edu [mailto:sue.neal@maine.edu]
Sent: Monday, June 11, 2007 4:09 PM
To: Benn, Tom
Subject: boom on mill stream in winthrop

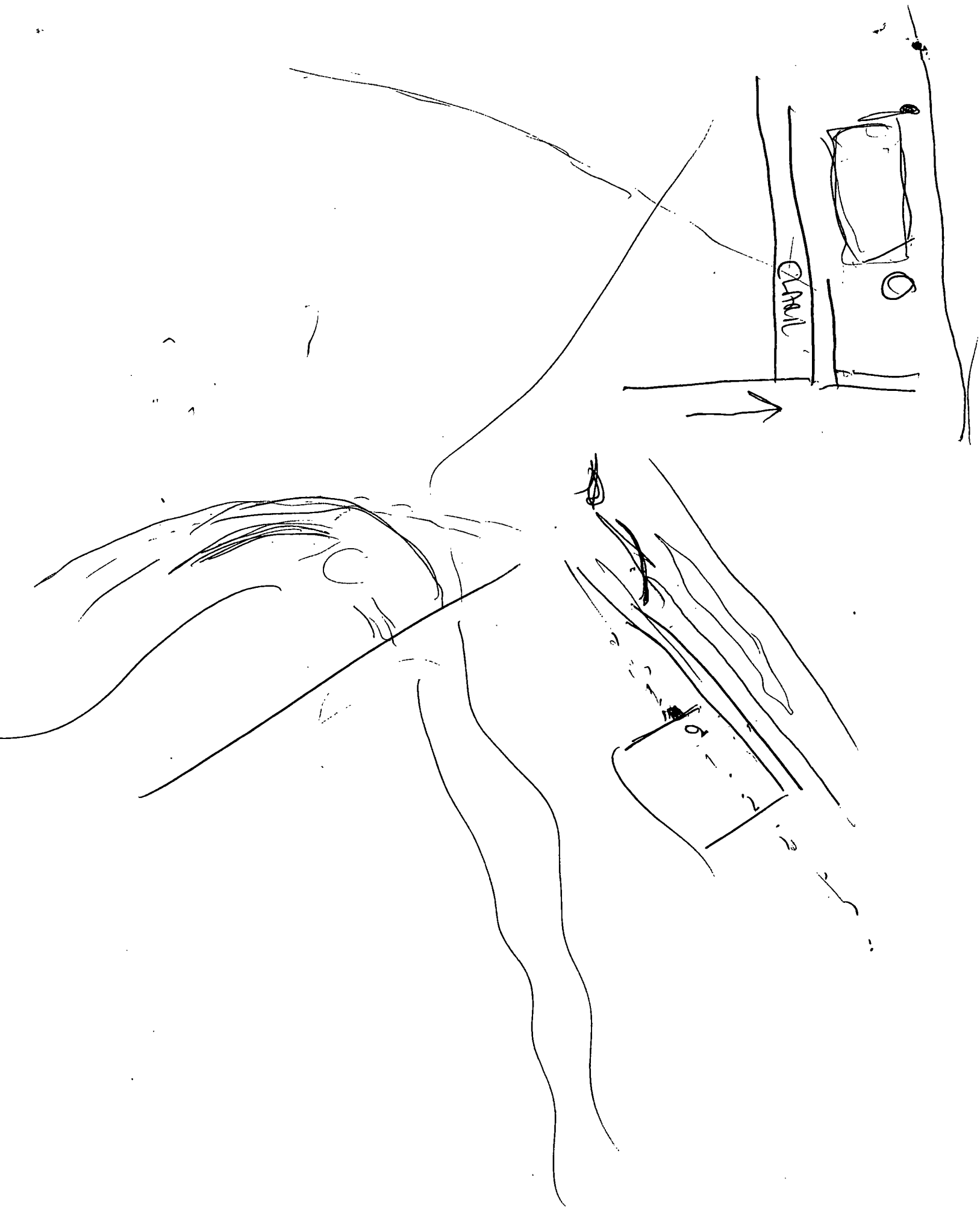
Hi Tom,

I went to the mill stream site this morning and had a great conversation with the guys who were getting ready to do the sediment samples. They were waiting for the boat. The results will be interesting.

While I was there, I walked over and took a look at the triple boom system on the stream. It has a sizable amount of debris and some black oil. Do you have a timetable to clean it? I would certainly hate to see that all get into the lake.

Thanks for any info you are able to give me.

Sue



Benn, Tom

From: Kenneth O Lajoie [klajoie@lajoiebros.com]
Sent: Monday, May 21, 2007 4:20 PM
To: Benn, Tom
Subject: RE: DEP's Next Steps in Addressing the Oil Release to Annabessacook Lake & Mill Stream

Tom,

We are currently negotiating a new loan with Gardiner Savings Bank for a new expansion of the building. GSB has requested assurances that the recent oil issue is being dealt with by DEP. Could you send an e mail or letter that I can forward to the bank to reassure them that this is not an issue we need to deal with and therefore should not affect our loan application.

**Thanks for your help.
Ken**

From: Benn, Tom [mailto:Tom.Benn@maine.gov]
Sent: Friday, May 04, 2007 3:14 PM
To: winceo@ctel.net; sue.neal@maine.edu; winthropcommerce@ctel.net; cwd@pivot.net; klajoie@lajoiebros.com; SDavis@UIG-ME.com; Haefele, Julie F.; Michael Levey; Flood, RepPatrick; Blanchard, Peter J; Lavallee, Fred C; Beane, John E; Aho, Hank; Seel, George J; Parker, Barbara T; Cumming, James; Hyland, Mark; Demkowicz, Bob A
Subject: DEP's Next Steps in Addressing the Oil Release to Annabessacook Lake & Mill Stream

Today, DEP Project Staff met to review the work done to date and better understand the extent and nature of the Patriot's Day Storm oil releases that entered Mill Steam and Annabessacook Lake in Winthrop. The nagging question remains; Where is all of this coming from? To answer that question, the team is working on the following items.

Action Item # 1: Gain access and permanently close the entrance of a large diameter pipe that diverts water from Mill Stream located on the north side of Main Street and extends under the mill complex. In 2006, the 30" water line was struck. That water line was quickly capped by stopping the flow at the dam. We will be placing a permanent cap on the pipe.

Action Item # 2: Install borings that extend 10 -15 feet into the bedrock along the edge of the retaining wall, downstream from the old boiler room. We hope to gain insight from this drilling to determine the extent of oil contamination remaining in the rock, along the stream bed.

Action Item # 3: Obtain lake-bed sediment samples in the northern-most basin of Annabessacook Lake, near the point where Mill Stream discharges. Plans are to determine the extent of contamination that has already been carried into lake sediments. Containment booms that are currently deployed in Annabessacook Lake will remain in-place until after the sampling is conducted.

Action Item # 4: Relocate the containment booms that are deployed within Mill Stream to farther upstream, reducing the area of oil fouling.

Action Item # 5: Investigate options, and look at possible benefit of stream-bed soil removals, and/or "vactoring" of the sediments from the bottom of the stream at the area adjacent to the tank excavation.

We will be working on these items and coordinating with home owners and business owners in the weeks to come. I will keep you apprised of these efforts, and report on our findings as we learn more, and gain insight into work that needs to be done. All of us are frustrated with the persistence of this problem, however we will continue to address the releases, and work to bring to an end the release of oil into the stream and Annabessacook Lake. On behalf of the DEP team I appreciate your support, and should you have any questions, or can offer us assistance please call me at 287-7662. Thank you.

Tom Benn, Remedial Project Manager
Remediation Bureau, DEP
207-287-7662

Benn, Tom

From: **Benn, Tom**
Sent: **Friday, May 04, 2007 3:14 PM**
To: **Beth Young (winceo@ctel.net); (sue.neal@maine.edu); Lou Carrier (winthropcommerce@ctel.net); Cobbossee Watershed District (cwd@pivot.net); Ken Lajoie (klajoie@lajoiebros.com); Scott Davis (SDavis@UIG-ME.com); Haefele, Julie F.; 'Michael Levey'; Flood, RepPatrick; Blanchard, Peter J; Lavallee, Fred C; Beane, John E; Aho, Hank; Seel, George J; Parker, Barbara T; Cumming, James; Hyland, Mark; Demkowicz, Bob A**
Subject: **DEP's Next Steps in Addressing the Oil Release to Annabessacook Lake & Mill Stream**

Today, DEP Project Staff met to review the work done to date and better understand the extent and nature of the Patriot's Day Storm oil releases that entered Mill Stream and Annabessacook Lake in Winthrop. The nagging question remains; Where is all of this coming from? To answer that question, the team is working on the following items.

Action Item # 1: Gain access and permanently close the entrance of a large diameter pipe that diverts water from Mill Stream located on the north side of Main Street and extends under the mill complex. In 2006, the 30" water line was struck. That water line was quickly capped by stopping the flow at the dam. We will be placing a permanent cap on the pipe.

Action Item # 2: Install borings that extend 10 -15 feet into the bedrock along the edge of the retaining wall, downstream from the old boiler room. We hope to gain insight from this drilling to determine the extent of oil contamination remaining in the rock, along the stream bed.

Action Item # 3: Obtain lake-bed sediment samples in the northern-most basin of Annabessacook Lake, near the point where Mill Stream discharges. Plans are to determine the extent of contamination that has already been carried into lake sediments. Containment booms that are currently deployed in Annabessacook Lake will remain in-place until after the sampling is conducted.

Action Item # 4: Relocate the containment booms that are deployed within Mill Stream to farther upstream, reducing the area of oil fouling.

Action Item # 5: Investigate options, and look at possible benefit of stream-bed soil removals, and/or "vactoring" of the sediments from the bottom of the stream at the area adjacent to the tank excavation.

We will be working on these items and coordinating will home owners and business owners in

the weeks to come. I will keep you apprised of these efforts, and report on our findings as we learn more, and gain insight into work that needs to be done. All of us are frustrated with the persistence of this problem, however we will continue to address the releases, and work to bring to an end the release of oil into the stream and Annabessacook Lake. On behalf of the DEP team I appreciate your support, and should you have any questions, or can offer us assistance please call me at 287-7662. Thank you.

Tom Benn, Remedial Project Manager
Remediation Bureau, DEP
207-287-7662

Benn, Tom

From: Blanchard, Peter J
Sent: Tuesday, May 01, 2007 10:36 AM
To: 'sue.neal@maine.edu'
Cc: Benn, Tom; Munkwitz, Nicole
Subject: RE: Weekly Summary Winthrop Clean-Up

Hi Sue,

We will need to assess the sunken oil issue Sue, I don't know what the answer is. Last summer when I was wading in Mill stream tending the boom, the sediments would cloud up and a rainbow sheen would appear on the surface. I suspect there may be some sunken oil in Mill stream and in the lake, however, we do not have a good handle on how much or what can be done to contain/recover it. This will be one of the topics that we discuss with our Technical Services team at DEP. As temp increases, sunken oil can refloat and cause sheen. We plan to keep the boom in place and prevent the spread of oil further down the lake.

I patrolled the shoreline on Saturday on both sides for approx. half mile. The ice that was in place Patriots Day weekend appears to have limited the oil from spreading further up the lake. It only appears to have impacted the very north end of the lake.

Not sure where you were looking, but I met six workers from EPI there yesterday (Monday) at 7:15 AM. They did leave early (about 2:30 PM) due to the rain/cold and threat of thunder shower, but had accomplished quite a bit. That water is very cold and they were soaked to the skin. The workers are back today. The oil cleanup along the shore is nearly complete and I expect to be mostly done by Wednesday. We will be tending the boom for several weeks, as well as working on investigation of any potential source removal at the mill and impacts to the stream and lake.

I met with IFW Biologist Nicole Munkwitz on Saturday. Over several days last week she collected approx. 25 turtles for cleaning, two have died. The turtles (mostly painted turtles, some snappers, and one musk turtle), will be kept at an approved facility then released back into the lake once cleanup is complete. No oiled birds have been recovered. Two loons, one blue heron, and several ducks have been observed near the spill area. Verbal report from Mike Halligan who you may know, lives opposite shore from John Hafele, observed a loon on shore that appeared to be oiled. Also the biologists caught a water snake and released it up the lake away from the spill area. It was not oiled.

Peter J. Blanchard
Division of Response Services
phone: (207) 287-3692
e-mail: peter.j.blanchard@maine.gov

-----Original Message-----

From: sue.neal@maine.edu [mailto:sue.neal@maine.edu]
Sent: Monday, April 30, 2007 7:52 PM

Benn, Tom

From: Benn, Tom
Sent: Monday, May 21, 2007 12:10 PM
To: 'sue.neal@maine.edu'
Subject: RE: oil spill update

Sue: Let me check and get back to you. Tom

-----Original Message-----

From: sue.neal@maine.edu [mailto:sue.neal@maine.edu]
Sent: Monday, May 21, 2007 7:23 AM
To: Benn, Tom
Subject: oil spill update

Meeting

Good Morning Tom,

Please give me an update on the clean-up. The amount of water coming into the lake has dropped considerably.

How often and when do you plan to change the booms?

Have any more dead animals, birds, turtles been found?

Also, I was given some white absorbant pads to soak up the oil floating in the water. A few folks have taken some of them. I'm not sure how to dispose of them? Please let me know what to do.

*- they will stay in place for a while
- check w/ IFW*

Thanks for your help.

Sue Neal
Annabessacook Lake Association

*talled w Peter -
trash bag and R*

Benn, Tom

From: System Administrator
To: sue.neal@maine.edu
Sent: Wednesday, May 02, 2007 9:18 AM
Subject: Undeliverable: Undelivered Mail Returned to Sender

Your message did not reach some or all of the intended recipients.

Subject:

The following recipient(s) could not be reached:

sue.neal@maine.edu on 5/2/2007 9:09 AM

The e-mail system was unable to deliver the message, but did not report a specific reason. Check the address and try again. If it still fails, contact your system administrator.

< zixvpm01.maine.gov #5.0.0 X-Proprietary; message size 17208012 exceeds size limit 16777216 of server mail-relay.maine.edu[130.111.32.30]>



STATE OF MAINE
DEPARTMENT OF ENVIRONMENTAL PROTECTION

Week Summary of DEP Response to
Oil Release into Annabessacook Lake in Winthrop

JOHN ELIAS BALDACCI

DAVID P. LITTELL

GOVERNOR

COMMISSIONER

Date 4/27/07

What Happened:

On Saturday, April 21st 2007 an unknown amount of oil was reported entering Mill Stream and Annabessacook Lake in Winthrop, Maine. Heavy oil product was seen entering the raging stream, swollen by the flooding conditions. DEP Responder John Andrews arrived on-site soon there-after, and began clean-up activities at the stream during the weekend. Mr. Andrews was later assisted by DEP Oil and Hazardous Material Specialist Peter Blanchard.

DEP Response Actions:

Spill Containment Booms were deployed into Mill Stream, north of Route # 202, and on Tuesday, additional booms were placed in Annabessacook Lake. These booms are used to contain and collect oil which was released into the waterway. DEP called EPI; a clean-up contractor to assist with the response. Approximately a dozen staff and contractors began to clean-up of approximately one mile of shoreline, and removal of about 20 cubic yards of contaminated debris. Maine Inland Fish & Wildlife (IF & W) was called to assist with recovery of oil soaked 22 turtles, and several birds. Emergency clean-up actions have continued throughout the remainder of this week. Area residents, and shoreland homeowners assisted and were supportive of the DEP's response.

Future Plans:

DEP will continue mopping-up the spill and work to identify the extent and source of the newly released oil. An initial estimate of ~ 100 gallons of heavy oil contributed to the release. DEP Staff visited the site of the former underground # 6 oil storage tank system and found no evidence of oil contained in a monitoring well, although the source of the release may be from the area of the exhumed tank. More assessment work will be needed, and clean-up efforts will continue. The Department is committed to finding the source of the oil and preventing discharges in the future.

Submitted by:

Tom Benn – DEP Project Manager

cc: Peter Blanchard, DEP Response Services
John Beane DEP Geologist
Fred Lavallee, DEP Engineer

AUGUSTA
17 STATE HOUSE STATION
AUGUSTA, MAINE 04333-0017
(207) 287-7688 FAX: (207) 287-7826
RAY BLDG., HOSPITAL ST.

BANGOR
106 HOGAN ROAD
BANGOR, MAINE 04401
(207) 941-4570 FAX: (207) 941-4584

PORTLAND
312 CANCO ROAD
PORTLAND, MAINE 04103
(207) 822-6300 FAX: (207) 822-6303

PRESQUE ISLE
1235 CENTRAL DRIVE, SKYWAY PARK
PRESQUE ISLE, MAINE 04769-2094
(207) 764-0477 FAX: (207) 760-3143

Benn, Tom

From: Benn, Tom
Sent: Friday, April 27, 2007 3:42 PM
To: Blanchard, Peter J; 'Beth Young (winceo@ctel.net)'; ✓
Flood, RepPatrick; 'Sue Neal Annabessacook Lake'; ✓
'Cobbossee Watershed District (c wd@pivot.net)';
Haefele, Julie F.; 'Lou Carrier
(winthropcommerce@ctel.net)'; ✓
'klajoie@lajoiebros.com'; 'Scott Davis (SDavis@UIG-
ME.com)'; 'Doug Grant'; 'Michael Levey'; Beane, John E;
Lavallee, Fred C; Davis, Dan; Andrews, Jon P
Cc: Seel, George J; Aho, Hank; Parker, Barbara T; Hyland,
Mark
Subject: DEP Work Summary for Winthrop's Mill Stream Oil
Discharge

Attachments: Winthrop April Hi Mill Stream Release April 27 07.doc;
IMG_0385.JPG; IMG_0378.JPG; IMG_0379.JPG; IMG_
0380.JPG; IMG_0381.JPG; IMG_0382.JPG; IMG_0383.JPG;
IMG_0384.JPG; IMG_0377.JPG



Winthrop April
-Hi Mill Stream ..

Good afternoon. The attached week-end summary of Department of the Environmental Protection's (DEP's) actions is provided to briefly explain the work done to mitigate the heavy oil discharges during the week of April 23rd -27th in Winthrop, Maine. Enclosed are photographs taken by DEP Responder Peter Blanchard. The source(s) of the discharge cannot be pinpointed with certainty at this time, however the DEP will continue it's clean-up efforts. We will also continue next Monday to work to prevent future discharges into Mill Stream. Thank you for your support, and if you have any information please feel free to share it with me. The Spill Boom will remain in place in the event that additional oil is sluiced. On behalf of Mr. Blanchard and the DEP team, I want to thank you for all the support and assistance.



IMG_0385.JPG
(1 MB)



IMG_0378.JPG
(1 MB)



IMG_0379.JPG
(1 MB)



IMG_0380.JPG
(1 MB)



IMG_0381.JPG
(1 MB)



IMG_0382.JPG
(2 MB)



IMG_0383.JPG
(1 MB)



IMG_0384.JPG
(1 MB)



IMG_0377.JPG
(1 MB)

To: Blanchard, Peter J
Subject: RE: Weekly Summary Winthrop Clean-Up

Hi Peter,

I received a note from Tom on Thursday. Nothing on Friday.
Peter, what about the oil that has settled on the bottom of the lake?
Will that float to the top in warm weather and head out into the lake?
Was there a "lot" of oil on the ice?

Sandy Hughes and I spent last week getting out and checking shorelines and talking to anyone we could find at home. Lots and lots of PR at this point.

There were no workers at the site today. Too rainy? I know they are a long way from finished.

Lots of rumors regarding "oil killed" animals and birds. What is the truth, please?

I will check at the site in the morning to see what is going on. We must stop meeting like this, Peter!!!!

Much thanks for all you do,

Sue

Quoting "Blanchard, Peter J" <Peter.J.Blanchard@maine.gov>:

> Hi Sue,
>
> Yes, this was only to send Tom the e-mail addresses of interested
> parties so he could send the summary later on Friday. I trust you
> received that?
>
> Peter
>
>
>
> Peter J. Blanchard
> Division of Response Services
> phone: (207) 287-3692
> e-mail: peter.j.blanchard@maine.gov
>
> -----Original Message-----
> From: sue.neal@maine.edu [mailto:sue.neal@maine.edu]
> Sent: Monday, April 30, 2007 9:17 AM
> To: Blanchard, Peter J
> Subject: RE: Weekly Summary Winthrop Clean-Up
>
> Hi Peter,
> I'm not able to "open" this. Was it just to send the names to Tom?
> Sue Neal
>
>

> Quoting "Blanchard, Peter J" <Peter.J.Blanchard@maine.gov>:
>
>> Hi Tom,
>> I have cc'd the interested parties for the Winthrop oil cleanup such
>> that you can include them in e-mailing the summary about what
>> happened
>
>> this week.
>> Peter
>>
>>
>> Peter J. Blanchard
>> Division of Response Services
>> phone: (207) 287-3692
>> e-mail: peter.j.blanchard@maine.gov
>>
>>
>>
>>
>
>
>

Our Flyer **WESSASSET** **Check out our flyer online. Updated Every 2 Weeks!**
 16 PAGES OF SAVINGS! FINANCIAL Mercury

MaineToday.com Eastern Star South / State St

News Weather Sports Business A&E Exploring Maine Outdoors myMaineToday Seen MaineJobs Real Est

KENNEBEC JOURNAL

Home News Sports Obituaries Viewpoints What's Happening Classifieds

Oil fouls Annabessacook

By **STEVE CARTWRIGHT**
 Staff Writer
KENNEBEC JOURNAL Morning Sentinel

[E-mail this page](#)
[E-mail a letter to the editor](#)
[Reader Comments \(below\)](#)

Wednesday, April 25, 2007



 [enlarge](#)

Staff photo by Andy Molloy

Employees of Environmental Projects Inc. toss into a Dumpster rags soiled with industrial heating oil collected from Annabessacook Lake in Winthrop on Tuesday. The Maine Department of Environmental Protection has been attempting to contain an oil slick on the lake.

WINTHROP -- A "significant" oil spill in downtown Winthrop has coated the banks of Mill Stream and the area where the stream flows into Lake Annabessacook.

The spill, discovered Tuesday by a nearby resident, involves an unknown quantity of No. 6 industrial heating oil, apparently released into the stream from the old Carleton Woolen Mill, according to Peter Blanchard of the Maine Department of Environmental Protection.

He called the event "very frustrating, very discouraging."

A similar oil spill occurred at the same site two years ago this month, sparking a three-month cleanup that included digging up and removing an oil tank.

Tuesday afternoon, Blanchard was supervising a dozen workers from the department's Oil and Hazardous Materials Response Team. They were attempting to mop up oil by hand. The crew had already set 1,100 feet of booms to contain the oil from spreading further into the lake. Annabessacook has a number of waterfront homes.

"We're working as hard as we can to clean this up," Blanchard said. "It is limited to the end of the lake near Route 202."

Town Manager Cornell Knight praised the department's action: "They seem to be taking prompt action to minimize the damage."

Blanchard said he is continuing to investigate the spill, which he said may involve oil in the ground released by hydraulic pressure from high water -- perhaps the result of spring thaw coupled with the Patriots Day storm. "We're not exactly positive. We're still trying to identify (the source)," he said.

Today's Top Headlines from the Kennebec Journal

- [Some state workers urge law exempting them from dues](#)
- [Claims of robbery, revenge for attack are suggested as motive](#)
- [Poulain known for his love of Franco-American culture, singing](#)
- [Irked board passes \\$28.5M](#)

- [Fleming will become state's new top cop](#)
- [Planners sift mine applications](#)
- **SOFTBALL**
[Messalonskee misses chances to produce runs](#)
- [Gardiner lefty stops Mt. Blue Tigers allow 2 hits in game that ends via the mercy rule](#)

All of today's: **News | Sports**
from the Kennebec Journal

Today's Top Headlines from the Morning Sentinel

- [Alleged triggerman claims shooting an act of revenge](#)
- [Victim's dream was to entertain](#)
- [Oakland man gets 7 years for robbery](#)
- [Senate backs Fleming](#)
- [Wilton murder remains mystery](#)
- [Lumberjack Lodge to go condo](#)
- [Cougars struggle again Gardiner holds Mt. Blue to 2 hits](#)
- [Eagles overcome slow start](#)

All of today's: **News | Sports**
from the Morning Sentinel

Blanchard said he also believes the oil had already leaked into a pocket in the ground when the tank was removed after the 2005 spill. That project involved demolishing the boiler building at the discontinued mill. With continued testing, costs have risen to \$420,000, Blanchard said.

Bob Engdahl, who lives along the lake, saw the state trucks on his way home.

"I'm sure they'll do their best to clean it up," Engdahl said, "but why are we having it again? It seems like someone dropped the ball if we're still having the problem."

He said he is concerned about environmental pollutants -- but at least with oil, it floats on the water's surface, making it somewhat easier to recover.

Carleton Woolen Mill closed in April 2000. It is currently owned by a partnership called Winthrop Commerce Center, which is rehabilitating the 200,000-square-foot building on a 10-acre site. A current tenant is MaineGeneral Medical Center, and partners have said they hope the U.S. Post Office will become another tenant there.

"I didn't know about it until Peter Blanchard called me," said Lou Carrier, spokesman for Winthrop Commerce Center. "It's a real mystery because they thought they had it all. They don't know where it's coming from."

Steve Cartwright -- 623-3811, Ext. 435

scartwright@centralmaine.com

Reader comments

MikeH of Litchfield, ME
Apr 26, 2007 6:55 AM

The only tax breaks should be for the people who would go out and volunteer to help clean it up.

geologyjoe of Gardiner, ME
Apr 25, 2007 3:36 PM

At least its just oil. There are a thousand of things that could be worse. This is a great example of what the DEP does best.

FreedomFrank of Portland, ME

Apr 25, 2007 2:30 PM

The partners had better hope that there is no piercing of the corporate veil. It could be ugly.

Jack Jackson of Monmouth, ME

Apr 25, 2007 2:21 PM

Yep, you "consewrivatives" would charge the owners for the clean up. Unless the owner was one of your own fellow criminals.

[Show all 10 comments](#)

Want to post a comment? First update your account.

To post comments, photos or ads on this site, and for some other functions, you'll need to update your account with a name and nickname. ([why?](#))

Anytime you post a photo or comment, you will have the option to be identified either by your first and last name, or by your unique nickname. In either case, your town will be listed. For example, John Smith of Freeport or John123 of Freeport.

First name:

Last name:


Create a one-word nickname:
([rules for nicknames](#))

Your town:

Maine United States

CAUTION: Once you have created an account with these choices of name, nickname and town, they cannot be changed.

By clicking "continue" and completing the registration forms, you are agreeing to abide by the [Terms of Service](#). Please review the terms before proceeding.

 University of Phoenix ONLINE	BACHELOR'S DEGREES Bachelor of Science in Business/Accounting Bachelor of Science in Business/Administration Bachelor of Science in Business/Marketing Bachelor of Science in Criminal Justice Admin. Bachelor of Science in Health Administration Bachelor of Science in Information Technology RN to Bachelor of Science In Nursing	MASTER'S DEGREES Master of Arts in Education Master of Business Administration Master of Science in Nursing	CLICK HERE TO LEARN MORE
	Accredited by The Higher Learning Commission		

4/26/07
John E. Beane

Note to Winthrop Commerce Center File

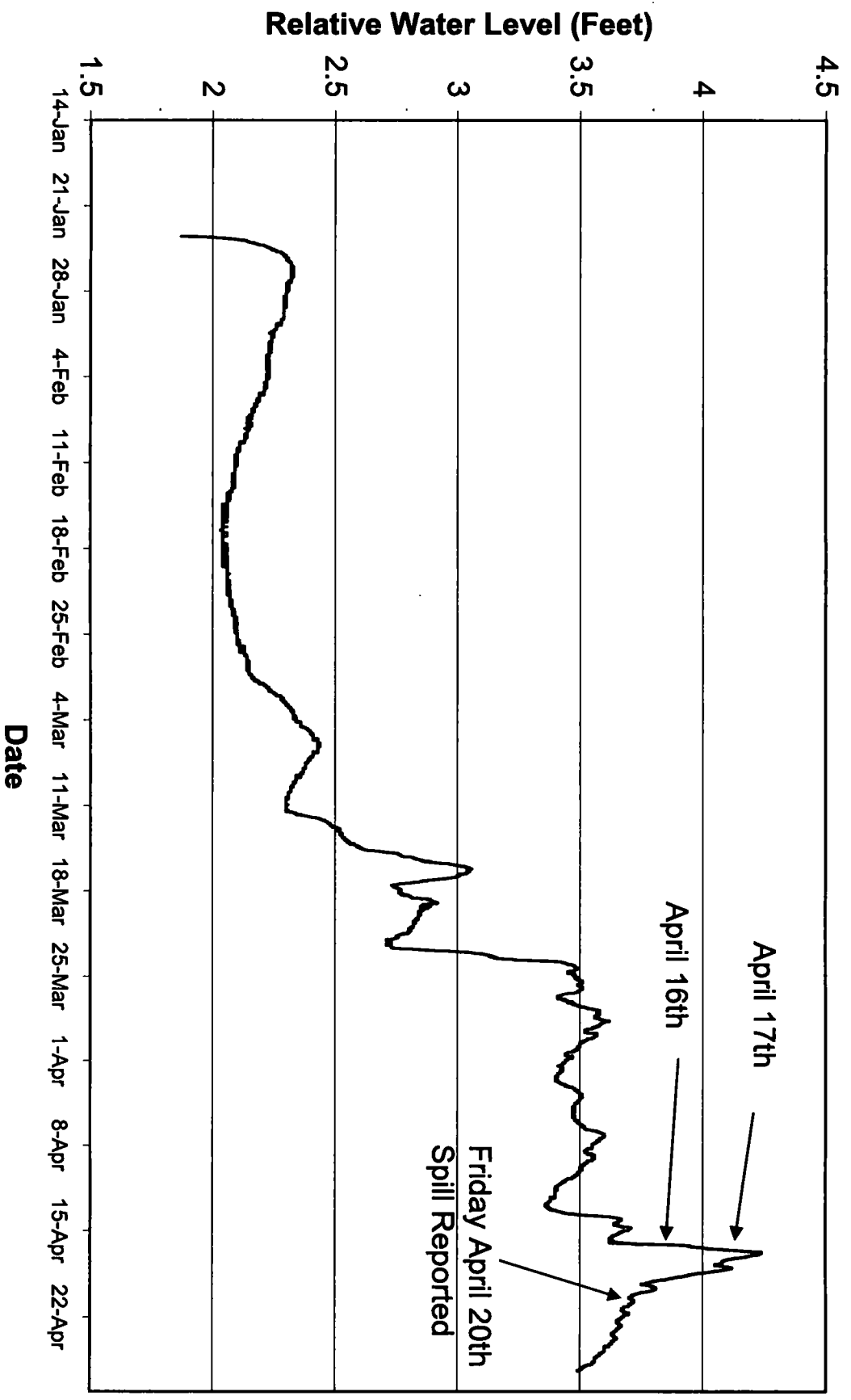
The corner of the cement wall at the southeast ~~to~~ end of the "wrought iron" fence is taken as the site benchmark with an assigned elevation of 100.00 feet.

The elevation of the MP at RW-1 is 98.34'

Location	MP Elev.	1/27/07 DTW	1/27/07 Elev	4/26/07 DTW	4/26/07 Elev
RW1	98.34	17.70	85.64	11.80	86.54
Stream	100.00	17.6	82.4	16.3	83.7
Level of RW1 above Stream			<u>3.24</u>		2.84

4/26/07
Recovery Well at
Former Boiler room.

Winthrop Commerce Center Water Level Trend



Benn, Tom

From: Benn, Tom
Sent: Thursday, April 26, 2007 2:06 PM
To: 'sue.neal@maine.edu'
Cc: Blanchard, Peter J; Beane, John E; Lavallee, Fred C
Subject: RE: Winthrop Heavy Oil Reappearance in Mill Stream

Sue: Update: Peter Blanchard has been doing a real good job spear-heading this clean-up. Residents who I have talked with all were supporting of the effort as well. Pete and I are going to put together a brief factoid on what we know, and what's going on. I surmise that Spring rain events, have liberated contamination that was in places that were un-accessable during the dig. The flood conditions provided the pressure needed to move this remaining # 6 oil. As you know, a little # 6 oil can go a long way, and I'm reminded that this Mill Site has been operating for ~ 150 year or more. Oil release estimates are between 50 and 100 gallons total based on Pete's clean-up experience. THX, Sue

Tom Benn

-----Original Message-----

From: sue.neal@maine.edu [mailto:sue.neal@maine.edu]
Sent: Monday, April 23, 2007 9:59 PM
To: Benn, Tom
Subject: Re: Winthrop Heavy Oil Reappearance in Mill Stream

Hi Tom,
Oh my lord. Now what? Thanks for the update. Keep me posted, please.
Sue Neal
ALIA

Quoting "Benn, Tom" <Tom.Benn@maine.gov>:

> Hi Sue: Just a quick note: Oil has been seen entering Mill Stream on
> Saturday. A containment boom has been deployed, and I'm heading out
> to meet up with Peter Blanchard this afternoon on-site. I'll call you
> with details as I learn more: I've called EPI who will be doing some
> clean-up with Peter's oversight. Take care.
>
> Tom Benn, DEP PM
>

Benn, Tom

From: Benn, Tom
Sent: Thursday, April 26, 2007 3:17 PM
To: Ken Lajoie (klajoie@lajoiebros.com)
Subject: FW: Winthrop Heavy Oil Reappearance in Mill Stream

Ken: About a week ago I was talking with fellow-staff here about putting a boom in the Mill Stream to catch any spring-releases of oil that may get flushed out from the excavation. When I drove by on Saturday morning when I seen the boom, and no one around...So I assumed...Well, I was wrong...Mother nature shook up some oil. It is a rather small amount of oil that was found to date, however it is far-traveled. The recovery well that was installed in the paved parking lot where the old tank was removed was quite free of oil contamination. DEP Geologist John Beane and I were on site briefly this morning. DEP Responder, Pete Blanchard has been overseeing the spill response and re-deployment of booms. Pete spoke with Lou Carrier, who said something about a pipeline that transects the parking lot that may be providing a pathway for water to be moved into the tank excavation.

I wanted to get you an update. Also below, please see my brief to Sue Neal at the Lake Association. Call me if you have questions. Tom

-----Original Message-----

From: Benn, Tom
Sent: Thursday, April 26, 2007 2:06 PM
To: 'sue.neal@maine.edu'
Cc: Blanchard, Peter J; Beane, John E; Lavallee, Fred C
Subject: RE: Winthrop Heavy Oil Reappearance in Mill Stream

Sue: Update: Peter Blanchard has been doing a real good job spear-heading this clean-up. Residents who I have talked with all were supporting of the effort as well. Pete and I are going to put together a brief factoid on what we know, and what's going on. I surmise that Spring rain events, have liberated contamination that was in places that were un-accessable during the dig. The flood conditions provided the pressure needed to move this remaining # 6 oil. As you know, a little # 6 oil can go a long way, and I'm reminded that this Mill Site has been operating for ~ 150 year or more. Oil release estimates are between 50 and 100 gallons total based on Pete's clean-up experience. THX, Sue

Tom Benn

-----Original Message-----

From: sue.neal@maine.edu [mailto:sue.neal@maine.edu]
Sent: Monday, April 23, 2007 9:59 PM
To: Benn, Tom
Subject: Re: Winthrop Heavy Oil Reappearance in Mill Stream

Hi Tom,
Oh my lord. Now what? Thanks for the update. Keep me posted, please.
Sue Neal
ALIA

Quoting "Benn, Tom" <Tom.Benn@maine.gov>:

> Hi Sue: Just a quick note: Oil has been seen entering Mill Stream on
> Saturday. A containment boom has been deployed, and I'm heading out
> to meet up with Peter Blanchard this afternoon on-site. I'll call you
> with details as I learn more: I've called EPI who will be doing some
> clean-up with Peter's oversight. Take care.

>
> Tom Benn, DEP PM

>

Benn, Tom

From: Andrews, Jon P
Sent: Monday, April 23, 2007 3:46 PM
To: Benn, Tom
Subject: Winthrop

A couple of people have called DEP or Winthrop F.D. re: #6 oil spill complaints.

Mike Halligan called WFD on Sunday. He owns 600' on Annebess. Lake. His # is 377-2139

Suzanne Annageiser (sp?) called Estelle at 1500 on Monday to report an oil slick. Her # is 377-2379

Bon apetit.

Benn, Tom

From: Benn, Tom
Sent: Wednesday, April 04, 2007 8:50 AM
To: Blanchard, Peter J; (sue.neal@maine.edu)
Subject: RE: help needed-ALIA

THX, Peter; Hello, Sue. This is the first time that I was aware that you have e-mailed me. I really recommend that you call me at 287-7662. I am still here, and I still spend a large portion of my work time on the road, and in meetings. I will get back to you, as soon as I am able and the May date which Peter recommends for boom deployment is on-target from my perspective. Please call. Thank you. Tom Benn

-----Original Message-----

From: Blanchard, Peter J
Sent: Wednesday, April 04, 2007 8:34 AM
To: Benn, Tom
Cc: 'sue.neal@maine.edu'
Subject: FW: help needed-ALIA

Tom,

Not sure what is happening with your e-mail. I am forwarding this message from Sue Neal from Annebessacook Lake association. This is reference the Winthrop mill #6 oil spill.

My opinion on the boom is that it is a bit early yet, however, I drive by the stream each day, and when that water drops a bit and the snow cover recedes, we could replace the boom and see if any oil is being captured. I would expect we would be able to place the boom by the first of May. Does that sound ok?

Peter J. Blanchard
Division of Response Services
phone: (207) 287-3692
e-mail: peter.j.blanchard@maine.gov

-----Original Message-----

From: sue.neal@maine.edu [mailto:sue.neal@maine.edu]
Sent: Tuesday, April 03, 2007 10:24 PM
To: Blanchard, Peter J
Subject: help needed-ALIA

Hi Peter,

I hope you are able to help me. I have e-mailed Tom Benn twice regarding the boom on Mill Stream

in Winthrop. Both times I received the message "deleted without being read." Is Tom still with the department? Is he still my contact person? What is his correct e-mail?

Thanks for any help you are able to give me Peter.

Sue Neal
Annabessacook Lake Association President

Benn, Tom

From: Benn, Tom
Sent: Monday, January 22, 2007 9:22 AM
To: 'Kenneth O Lajoie'
Subject: De-Brief: Visit to Winthrop Commerce Center

Ken: Friday's visit went well. The Techies are happy...so, I'm happy!!! Stopped by to say HI to Lou, and we spend ~ 1 hour out there...NICE FENSE! You should probably know that the Manhole access cover that was placed in the newly paved dooryard had one of the retainer bolts knocked off. Fred Lavallee and Peter repaired it...NO; we won't charge you...CHEERS!

John has a bunch of photos, should you want them, they're easy to send along-overr via e-mail. All-the-BEST!

Tom

From: Kenneth O Lajoie [mailto:klajoie@lajoiebros.com]
Sent: Tuesday, January 16, 2007 2:01 PM
To: Benn, Tom
Subject: RE: Visit to Winthrop Commerce Center on Friday 9:00 - 11:00?

Tom,

You are welcome to go out on Friday or anytime. I'm not available to meet with you but I'll check with Lou to see if he will be around. Please feel free to look around even if Lou is not available. Please let me know if you need anything from us.

Ken

From: Benn, Tom [mailto:Tom.Benn@maine.gov]
Sent: Tuesday, January 16, 2007 1:40 PM
To: klajoie@lajoiebros.com
Subject: Visit to Winthrop Commerce Center on Friday 9:00 - 11:00?

Ken:

Welcome to 2007! Hope that you had a nice holidays...Might we (Johnny Beane, Alfred Lavallee, and I) be able to spend ~1 hour visiting the site on Friday morning? That would be January 19th? We wanted to take a peek at the Mill Stream, and just get a feel for the site in-order to determine if something else needs to be done out there from a DEP Technical Services' perspective.

I can be reached by cell phone during the remainder of the week; 592-2880,
Please call or just confirm by e-mail if it works for you, Ken. THX

Tom

Benn, Tom

From: Kenneth O Lajoie [klajoie@lajoiebros.com]
Sent: Thursday, January 18, 2007 6:33 AM
To: Benn, Tom
Subject: RE: THX for access Winthrop Commerce Center

Tom,
Lou's office is directly across the street from the mill office building on Main Street. He is usually there.

I agree that the problem appears to be solved. Good luck.
Ken

From: Benn, Tom [mailto:Tom.Benn@maine.gov]
Sent: Wednesday, January 17, 2007 8:00 PM
To: Kenneth O Lajoie
Subject: THX for access Winthrop Commerce Center

Ken: Thank you, so much. Lou certainly doesn't need to go-out-of-his-way. If I know he'll be there, I'll look for him...How will I know its him? From my perspective, I really feel strongly that we're done out there...maybe a little mopping-up exercise. My toughest challenge will be to convince some other people within these four walls that its the case. Wish me well...I'll de-brief you next week.

Tom

From: Kenneth O Lajoie [mailto:klajoie@lajoiebros.com]
Sent: Tuesday, January 16, 2007 2:01 PM
To: Benn, Tom
Subject: RE: Visit to Winthrop Commerce Center on Friday 9:00 - 11:00?

Tom,
You are welcome to go out on Friday or anytime. I'm not available to meet with you but I'll check with Lou to see if he will be around. Please feel free to look around even if Lou is not available. Please let me know if you need anything from us.
Ken

From: Benn, Tom [mailto:Tom.Benn@maine.gov]
Sent: Tuesday, January 16, 2007 1:40 PM
To: klajoie@lajoiebros.com
Subject: Visit to Winthrop Commerce Center on Friday 9:00 - 11:00?

Ken:

Welcome to 2007! Hope that you had a nice holidays...Might we (Johnny Beane,

Alfred Lavalley, and I) be able to spend ~1 hour visiting the site on Friday morning? That would be January 19th? We wanted to take a peek at the Mill Stream, and just get a feel for the site in-order to determine if something else needs to be done out there from a DEP Technical Services' perspective.

I can be reached by cell phone during the remainder of the week; 592-2880, Please call or just confirm by e-mail if it works for you, Ken. THX

Tom

Zone 21 Forecast ...



... Kennebec County

Click the zone map for other zone forecasts.

Weather conditions on
 proposed supply date.
 Winthrop Concrete Center
 Hackett - Winthrop
 A-157-05

Rain began at 7:30 in Gardiner.
 Supply called off due to weather.

MEMA's [General Weather Information](#) page.

John Z. Rene
 10/28/05

NATIONAL WEATHER SERVICE GRAY ME

NATIONAL WEATHER SERVICE FORECAST FOR...
 SOUTHERN FRANKLIN-SOUTHERN SOMERSET-KENNEBEC-INTERIOR WALDO-
 INCLUDING THE CITIES OF...FARMINGTON...WILTON...SKOWHEGAN...
 PITTSFIELD...MADISON...FAIRFIELD...AUGUSTA...WATERVILLE...WINSLOW...
 GARDINER...UNITY

328 AM EDT SAT OCT 28 2006

...HIGH WIND WARNING IN EFFECT FROM 3 PM THIS AFTERNOON TO 11 PM EDT

THIS EVENING...

...FLOOD WATCH IN EFFECT FROM NOON EDT TODAY THROUGH LATE TONIGHT...

.TODAY...RAIN...DEVELOPING THIS MORNING...BECOMING HEAVY AT TIMES
 IN THE AFTERNOON. A CHANCE OF THUNDERSTORMS LATE. VERY WINDY WITH
 HIGHS IN THE UPPER 40S. EAST WINDS 15 TO 20 MPH WITH GUSTS UP TO
 30 MPH...INCREASING TO 25 TO 35 MPH WITH GUSTS UP TO 60 MPH IN THE
 AFTERNOON.

.TONIGHT...MOSTLY CLOUDY. RAIN WITH A CHANCE OF THUNDERSTORMS
 IN THE EVENING...THEN A CHANCE OF RAIN SHOWERS AFTER MIDNIGHT. RAIN
 MAY BE HEAVY AT TIMES IN THE EVENING. VERY WINDY WITH LOWS AROUND
 40. SOUTHEAST WINDS 30 TO 40 MPH WITH GUSTS UP TO 55 MPH...BECOMING
 SOUTH 20 TO 30 MPH WITH GUSTS UP TO 45 MPH AFTER MIDNIGHT.

.SUNDAY...MOSTLY CLOUDY WITH A 50 PERCENT CHANCE OF RAIN SHOWERS.
 BREEZY WITH HIGHS IN THE MID 40S. SOUTHWEST WINDS 20 TO 25 MPH WITH
 GUSTS UP TO 35 MPH.

.SUNDAY NIGHT...MOSTLY CLOUDY. LOWS IN THE LOWER 30S. WEST WINDS
 15 TO 20 MPH WITH GUSTS UP TO 30 MPH.

.MONDAY THROUGH TUESDAY...PARTLY CLOUDY. HIGHS IN THE UPPER 40S.
 LOWS IN THE UPPER 20S.

.TUESDAY NIGHT AND WEDNESDAY...PARTLY CLOUDY. LOWS IN THE MID 30S.
 HIGHS IN THE LOWER 50S.

.WEDNESDAY NIGHT...PARTLY CLOUDY. A CHANCE OF RAIN AFTER MIDNIGHT.
 LOWS IN THE MID 30S. CHANCE OF RAIN 40 PERCENT.

.THURSDAY...A CHANCE OF SNOW IN THE MORNING...THEN MOSTLY CLOUDY WITH A
 CHANCE OF RAIN. HIGHS IN THE UPPER 40S. CHANCE OF PRECIPITATION
 50 PERCENT.

.THURSDAY NIGHT...MOSTLY CLOUDY IN THE EVENING...THEN BECOMING
 PARTLY CLOUDY. A CHANCE OF RAIN AND SNOW SHOWERS. LOWS IN THE LOWER
 30S. CHANCE OF PRECIPITATION 40 PERCENT.

.FRIDAY...PARTLY CLOUDY. A CHANCE OF RAIN AND SNOW SHOWERS IN THE
 MORNING. HIGHS IN THE MID 40S. CHANCE OF PRECIPITATION 40 PERCENT.

SUNRISE AND SUNSET FOR BANGOR

OCTOBER 28 2006.....SUNRISE 708 AM EDT SUNSET 530 PM EDT
 OCTOBER 29 2006.....SUNRISE 609 AM EST SUNSET 428 PM EST

SUNRISE AND SUNSET FOR PORTLAND

OCTOBER 28 2006.....SUNRISE 712 AM EDT SUNSET 538 PM EDT
 OCTOBER 29 2006.....SUNRISE 613 AM EST SUNSET 436 PM EST

CONDITIONS AT 700 AM EDT SAT OCT 28 2006

CITY	SKY/WX	TMP	DP	RH	WIND	PRES	REMARKS
AUGUSTA	CLOUDY	39	36	89	CALM	29.88F	
WATERVILLE	CLOUDY	37	34	87	NE5	29.85F	

.....KEY.....

- WCI - WIND CHILL
- TC - TEMPERATURE IN CELSIUS
- VSB - VISIBILITY IN MILES
- HX - HEAT INDEX
- FAIR- INDICATES FEW OR NO CLOUDS BELOW 12,000 FT, WITH NO
 SIGNIFICANT WEATHER AND/OR OBSTRUCTIONS TO VISIBILITY.

5-DAY FORECAST MATRIX...

ROWS INCLUDE...

- DAILY PREDOMINANT DAYTIME WEATHER 6AM-6PM
- FORECAST TEMPERATURES...EARLY MORNING LOW/DAYTIME HIGH
- PROBABILITY OF PRECIPITATION 6AM-6PM
- INDICATES TEMPERATURES BELOW ZERO
- MM INDICATES MISSING DATA

FCST	FCST	FCST	FCST	FCST	FCST	FCST
TODAY	SUN	MON	TUE	WED	THU	FRI
OCT 28	OCT 29	OCT 30	OCT 31	NOV 01	NOV 02	NOV 03

AUGUSTA, ME

TSTRMS	MOCLDY	PTCLDY	PTCLDY	PTCLDY	RAIN	PTCLDY
/49	37/51	33/49	30/50	35/52	33/48	32/47

POP 100 POP 20 POP 10 POP 10 POP 10 POP 50 POP 20

WATERVILLE, ME

TSTRMS	MOCLDY	PTCLDY	PTCLDY	PTCLDY	MOCLDY	PTCLDY
/47	40/47	33/48	29/50	35/51	33/48	32/48
POP 100	POP 30	POP 10	POP 10	POP 10	POP 40	POP 30

[Return to Maine Emergency Management Agency home page....](#)

Charlie's

MaineToday.com

Bath (Sun) / Bangor (Sun) / State Sunday Telegram KENNEBEC JOURNAL

Hello, Tom

KENNEBEC JOURNAL

MAINE'S OLDEST NEWSPAPER
~ AUGUSTA, MAINE ~

online

NEWS SPORTS OBITUARIES VIEWPOINTS WHAT'S HAPPENING CLASSIFIEDS

Wednesday, September 13, 2006

[E-mail this story to a friend](#)

Oil spill cleanup not quite finished

By GLEN BOLDUC
Staff Writer

Copyright © 2006 Blethen Maine Newspapers Inc.

WINTHROP -- It was one of the biggest cleanups the state had ever seen.

It took three months to dig out the heating oil that had leaked into the Mill Stream from an old boiler room at the former Carleton Woolen Mill. The Main Street site was paved, and the shores of Mill Stream and Annabesacook Lake scrubbed.

Now, just over a year since regulators submitted a plan to stop the oil, monthly monitoring continues and signs of leaking still exist.

"We're not quite done with this project," said Peter Blanchard, of the Department of Environmental Protection.

Sheen -- the rainbow-colored slick on the surface of oil- and gas-tainted water -- was seen along portions of the shore near the site on hot days this summer. Blanchard's best guess is that oil may still be lingering in the bedrock, which is out of excavation equipment reach.

"We're still faced with some unknown challenges," Blanchard said Tuesday.

ADVERTISEMENT

VARNEY
PONTIAC - GMC - MAZDA - ISUZU
BANGOR

Today's Top Headlines
from the Kennebec Journal

It was April 2005 when it all began. Days of heavy rain and spring thaws saturated the ground just before residents saw the thick oil flowing down Mill Stream and into Annabesacook Lake.

"They were putting the buoys up and trying to figure out what was going on," Sue Neal, president of the Annabesacook Lake Improvement Association, said Monday.

For days, crews chased hundreds of gallons of No. 6 heating oil, setting up barriers in the stream to try to contain the spill, and cleaning up wildlife that was already using the late-winter waters. The ooze was slowed by lingering ice on the lake's surface and, luckily, water fowl had not yet come back for the summer.

"We were fortunate that that did not happen," Neal said.

Officials from the Maine Department of Environmental Protection traced the pollution to the former Carleton Woolen Mill property, but were not ready to say that was the source. Environmental officials said storm drains from all over Winthrop discharge into Mill Stream at the Carleton site, and the contaminant could have come from any of those drains.

But months later, it became obvious where the source was. The DEP concluded the thick, heavy oil was coming from a site beneath the mill's boiler room. The culprit was an empty, sand-filled oil tank, and speculators theorized the oil had been sitting in a pocket for years before high groundwater levels pushed it toward the water.

"That was the source of the oil," Blanchard said. "But it took a long time to get there."

Cleaning crews had to wait for the water levels to lower before they could kill the source of the oil. And then the boiler room, which had been used up until 2001, was full of additional contaminants -- including asbestos and PCBs -- that needed to be cleaned out first.

"The people who were there were surprised at how much was involved in that," Neal said. "It was not just cleaning up a little oil."

"It was a very big project," Blanchard agreed.

The entire boiler building was destroyed, and 430 cubic yards of soil underneath the building was dug up right to the bedrock. Excavators discovered more than a couple old foundation slabs from former buildings on the site, including a tannery.

"It was a very difficult site to excavate," Blanchard said.

From December to March, crews worked to remove the oil, and bored holes around the site to see how far the oil spread.

- [Heat help comes early](#)
- [Families say law needs adjustments](#)
- [City hoping to finally get old house cleared](#)
- [Oil spill cleanup not quite finished](#)
- [Board votes to tighten blasting restrictions](#)
- [Police seize 18 marijuana plants, arrest local man](#)
- [Pushard's loss still affecting Ramblers](#)
- [Eagles finish strong](#)

All of today's: [News](#) | [Sports](#)
from the Kennebec Journal

**Today's Top Headlines
from the Morning Sentinel**

- [Protective measures are urged](#)
- [Looking for a home](#)
- [Heat help comes early](#)
- [Selectmen nix ban on outdoor wood-fire boilers](#)
- [Group proposes tax credit for student loans](#)
- [Tax credit proposed for student loans](#)
- [Fast start, big finish?](#)
- [Indians go on the defensive](#)

All of today's: [News](#) | [Sports](#)
from the Morning Sentinel

Thousands of pounds of absorbent material that had been spread along the 1,200 feet of contaminated shore were cleaned up, and the entire site was finally paved.

"The mill has been there for years and years and years," Neal said.

The Carleton Woolen Mill had a history of leaking oil. The DEP said oil spilled from the mill in the 1960s, three times in 1990, and again in 1993. The mill closed in 2001.

For about \$200,000, a price that included back property taxes, a team of investors bought the abandoned mill in 2003 and announced ambitious plans to turn it into a mixed-use complex of offices, stores and apartments that could house at least 500 workers and residents.

Finally, weeks before the spill appeared, the Winthrop Commerce Center inked a deal with the Winthrop Health Center, which now occupies parts of two floors in one wing of the L-shaped mill. According to articles written at the time, the spill almost soiled the deal.

Small amounts of oil still leak from the site into the Mill Stream.

"It's hard to predict how that will impact wildlife," Blanchard said.

Signs of the oil disappear by the time the water reaches Annabessacook, he said, and neighbors have said nothing of seeing environmental impacts.

Healthy water fowl populations were seen all summer, and fisherman bragged of good catches in the area.

"We haven't seen any oiled wildlife in the area," Blanchard said.

The estimated 400 gallons of oil that spilled into the stream over those months took hundreds of thousands of dollars to clean up. The bill was paid by a groundwater insurance fund, Blanchard said, and in time the remaining leaks should clear off.

"I think that will taper off over the winter," he said.

Glen Bolduc -- 623-3811, Ext. 431

gbolduc@centralmaine.com

Reader Comments

Share your thoughts about this story.

There are not yet any reader comments. Use the form below to submit your comment and it will appear here.

Post a Comment

You must be a registered user of MaineToday.com to post a comment. Register. Please complete all information. Your e-mail address is collected for recording purposes only and will not be displayed on web pages. Your comments will be reviewed by MaineToday.com and posted within one business day. Guidelines

Your name

Your town & state
,

Your e-mail

(will not be displayed)

Your comment

Benn, Tom

From: Benn, Tom
Sent: Monday, September 11, 2006 10:02 AM
To: Ken Lajoie (klajoie@lajoiebros.com)
Subject: Commerce Center: Fense and Paving Bills

Ken:

Hello. Just left you a voice mail. The two remaining items: Ferriollo is submitting a bill for \$4000 (1/3 of overall cost) directly to me for pavement. That should take care of that. As for the fense, I have been told that we got a quote for \$1800; the cost of replacement of the pre-existing one. If you feel comfortable going ahead with hiring, I can either pay direct that amount or any other way within reason. THX, Ken

Tom



STATE OF MAINE
DEPARTMENT OF ENVIRONMENTAL PROTECTION

Tom

From: Blanchard, Peter J

DAVID P. LITTELL

Sent: Monday, August 28, 2006 12:55 PM

COMMISSIONER

To: Benn, Tom

Cc: klajoie@lajoiebros.com

Subject: FW: Winthrop Commerce Center

Tom, FYI

Peter

*Robin o Fernald
800-698-5848
"Bill us 1/3"
MM ME*

From: Kenneth O Lajoie [mailto:klajoie@lajoiebros.com]

Sent: Monday, August 28, 2006 6:45 AM

To: Blanchard, Peter J

Cc: Lou Carrier; Gene Green; John Martin; 'John Lajoie'; slajoie@lajoiebros.com

Subject: RE: Winthrop Commerce Center

Peter,

We have not paid the Farraiolo invoice yet. Perhaps the easiest way to deal with this is to have Farraiolo redirect \$4000.00 of the invoice to DEP. The invoice number is 457 and is dated 6/28/06. It would probably be easier if you initiated this change. Please let me know if you have any questions.

Ken

From: Blanchard, Peter J [mailto:Peter.J.Blanchard@maine.gov]

Sent: Friday, August 25, 2006 2:09 PM

To: Kenneth O Lajoie

Cc: Benn, Tom

Subject: RE: Winthrop Commerce Center

Hi Ken,

I've swapped e-mails with Tom about the project and explained that I concur that DEP pay an additional \$4,000.00 toward the paving. Also, the fencing is DEP's responsibility. Tom will be in touch with you to finalize the installation schedule and to work out how the payment would be made for the paving as I assume WCC has already paid the \$12,000 invoice.

Peter

From: Kenneth O Lajoie [mailto:klajoie@lajoiebros.com]

Sent: Thursday, August 24, 2006 1:52 PM

To: Blanchard, Peter J

Cc: Benn, Tom; Lou Carrier; Gene Green; John Martin; 'John Lajoie'; slajoie@lajoiebros.com

Subject: RE: Winthrop Commerce Center

Peter,

I'm sorry it's taken so long to get back to you but it's

AUGUSTA
17 STATE HOUSE STATION
AUGUSTA, MAINE 04333-0017
(207) 287-7688 FAX: (207) 287-2826
RAY BLDG., HOSPITAL ST.

BANGOR
106 HOGAN ROAD
BANGOR, MAINE 04401
(207) 941-4570 FAX: (207) 941-4584

PORTLAND
312 CALICO ROAD
PORTLAND, MAINE 04103
(207) 822-6300 FAX: (207) 822-6303

PRESQUE ISLE
2255 CENTRAL DRIVE, SKYWAY PARK
PRESQUE ISLE, MAINE 04769-2094
(207) 764-0477 FAX: (207) 760-3143



STATE OF MAINE
DEPARTMENT OF ENVIRONMENTAL PROTECTION

Sometimes difficult to get all the partners together.

As you know WCC has been invoiced almost \$12000.00 for the paving of the Clark Street parking lot. We had expected that DEP would be paying for the entire pavement in this lot based on our interpretation of the "Clark Street to Stream wording in our agreement. Due to this unfortunate misunderstanding we feel it would be a reasonable compromise for DEP to pay \$4000.00 of the almost \$12000.00 paving bill and in turn WCC will release DEP from any obligation for the exterior brickwork refinishing.

This will only leave the railing issue to deal with. WCC will be contacting Pine Tree Fencing to install a 48" high colored chain link fence. We would expect DEP would pay for the fencing in where the building was removed.

I think this agreement will satisfy both parties and allow us to move on.

Ken

From: Blanchard, Peter J [mailto:Peter.J.Blanchard@maine.gov]
Sent: Friday, August 04, 2006 9:59 AM
To: Kenneth O Lajoie
Cc: Benn, Tom
Subject: RE: Winthrop Commerce Center

Tom Benn is available Monday 8/10 at 1 PM we will meet at the chimney unless I hear differently from you.

From: Kenneth O Lajoie [mailto:klajoie@lajoiebros.com]
Sent: Thursday, August 03, 2006 4:54 PM
To: Blanchard, Peter J
Cc: Lou Carrier; Gene Green; 'John Lajoie'; John Martin; slajoie@lajoiebros.com
Subject: RE: Winthrop Commerce Center

Railings & Paving

From: Blanchard, Peter J [mailto:Peter.J.Blanchard@maine.gov]
Sent: Thursday, August 03, 2006 1:15 PM
To: Kenneth O Lajoie
Subject: RE: Winthrop Commerce Center

What other items did you want to discuss?

From: Kenneth O Lajoie [mailto:klajoie@lajoiebros.com]
Sent: Thursday, August 03, 2006 9:49 AM
To: Blanchard, Peter J
Cc: Lou Carrier; Gene Green; 'John Lajoie'; John Martin; slajoie@lajoiebros.com
Subject: RE: Winthrop Commerce Center

AUGUSTA
17 STATE HOUSE STATION
AUGUSTA, MAINE 04333-0012
(207) 287-7688 FAX: (207) 287-7826
RAY BLDG., HOSPITAL ST.

106 HOGAN ROAD
BANGOR, MAINE 04401
(207) 941-4570 FAX: (207) 941-4584

212 CANCO ROAD
PORTLAND, MAINE 04103
(207) 822-6300 FAX: (207) 822-6303

1235 CENTRAL DRIVE, SKYWAY PARK
PRESQUE ISLE, MAINE 04769-2094
(207) 764-0477 FAX: (207) 760-3143



STATE OF MAINE
DEPARTMENT OF ENVIRONMENTAL PROTECTION

JOHN ELIAS BALDACCI
GOVERNOR

Peter,
I'll leave Monday afternoon open in my schedule.
Let me know what time.
Ken

DAVID P. LITTELL
COMMISSIONER

From: Blanchard, Peter J [mailto:Peter.J.Blanchard@maine.gov]
Sent: Thursday, August 03, 2006 8:59 AM
To: Kenneth O Lajoie
Cc: Benn, Tom
Subject: Winthrop Commerce Center

Hi Ken,
Sure, glad to discuss any remaining items. I am handing the project over to a new project manager at DEP, Tom Benn, who I would like to attend the meeting. I have the replacement of the fence along the top of the concrete as one item. Also outstanding invoice from DEP for non fund eligible expenses (asbestos work and lead paint). What other items did you folks have?

At this point, Monday afternoon looks best for me. Tom is out today but is expected in tomorrow. I will give you a call tomorrow to set a final date.
Peter

From: Kenneth O Lajoie [mailto:klajoie@lajoiebros.com]
Sent: Tuesday, August 01, 2006 1:14 PM
To: Blanchard, Peter J
Cc: Lou Carrier; Gene Green; 'John Lajoie'; John Martin; slajoie@lajoiebros.com
Subject: FW: Proposal for DEP

Peter,
Could we meet on site to discuss this issue
and some of the other items that are still not complete?
Wednesday or Friday morning looks good for me this
week or Monday or Friday next week. Let me know what
works for you.
Ken

AUGUSTA
17 STATE HOUSE STATION
AUGUSTA, MAINE 04333-0017
(207) 287-7688 FAX: (207) 287-7826
RAY BLDG., HOSPITAL ST.

BANGOR
106 HOGAN ROAD
BANGOR, MAINE 04401
(207) 941-4570 FAX: (207) 941-4584

PORTLAND
312 CANCO ROAD
PORTLAND, MAINE 04103
(207) 822-6300 FAX: (207) 822-6303

PRESQUE ISLE
1235 CENTRAL DRIVE, SKYWAY PARK
PRESQUE ISLE, MAINE 04769-2094
(207) 764-0477 FAX: (207) 760-3143



STATE OF MAINE
DEPARTMENT OF ENVIRONMENTAL PROTECTION

Tom

From: Blanchard, Peter J
Sent: Friday, August 25, 2006 2:02 PM
To: Benn, Tom
Subject: RE: Winthrop Commerce Center

DAVID P. LITTELL
COMMISSIONER

Tom,

Paving:

The paving company was Ferraiolo of Gardiner. Comfort has never been the operative word with this site. Probably we could stretch a bit more and justify paying for the area around the chimney were we conducted borings. I measured the area, and \$4,000.00 is actually a little less than what I expected based on price per square yard. So...yes I would agree to pay an additional \$4,000.00 for paving and call it good.

Fence:

Definitely the fence is our responsibility. I also got a quote from Marc Newcombe Welding for \$1800.00 but I can't find it. That was for welding a single railing to match the existing pipe railing which was the original agreement. I guess they want to use a colored chain link fence now, not the brushed aluminum that they originally wanted. I don't know how chain link would compare in price, but if it is near the other quotes, probably would be fine.

Thanks Tom for finishing this one out. Give me a call if I can be of further assistance.
Peter

From: Benn, Tom
Sent: Friday, August 25, 2006 10:35 AM
To: Blanchard, Peter J
Subject: FW: Winthrop Commerce Center

Peter:

Hi...Thank you...I visited Mr. Heafler with Jim Cummings, John Beane, and Dan Davis this AM. I was thinking about the outstanding items with the Mill owners. Who was the paving company? Do you feel comfortable providing payment for 1/3 of the overall paving bill? Also, I did get your information about fencing. This is for the up-graded fence, right? With both situations, I will need to negotiate a contract with each company. I am out this afternoon. Hope that all is well.

Tom

AUGUSTA 17 STATE HOUSE STATION AUGUSTA, MAINE 04333-0017 (207) 287-7688 FAX: (207) 287-7826 RAY BLDG., HOSPITAL ST.	BANGOR 106 HOGAN ROAD BANGOR, MAINE 04401 (207) 941-4570 FAX: (207) 941-4584	PORTLAND 312 CANCO ROAD PORTLAND, MAINE 04103 (207) 822-6300 FAX: (207) 822-6303	PRESQUE ISLE 1235 CENTRAL DRIVE, SKYWAY PARK PRESQUE ISLE, MAINE 04769-2094 (207) 764-0477 FAX: (207) 760-3143
---	---	---	---



STATE OF MAINE
DEPARTMENT OF ENVIRONMENTAL PROTECTION

Benn, Tom

From: DAVID P. LITTELL
From: Kenneth O Lajoie [klajoie@lajoiebros.com]

DAVID P. LITTELL

COMMISSIONER

Sent: Thursday, August 24, 2006 1:52 PM

To: Blanchard, Peter J

Cc: Benn, Tom; Lou Carrier; Gene Green; John Martin; 'John Lajoie'; slajoie@lajoiebros.com

Subject: RE: Winthrop Commerce Center

Peter,

I'm sorry it's taken so long to get back to you but it's sometimes difficult to get all the partners together.

As you know WCC has been invoiced almost \$12000.00 for the paving of the Clark Street parking lot. We had expected that DEP would be paying for the entire pavement in this lot based on our interpretation of the "Clark Street to Stream wording in our agreement. Due to this unfortunate misunderstanding we feel it would be a reasonable compromise for DEP to pay \$4000.00 of the almost \$12000.00 paving bill and in turn WCC will release DEP from any obligation for the exterior brickwork refinishing.

This will only leave the railing issue to deal with. WCC will be contacting Pine Tree Fencing to install a 48" high colored chain link fence. We would expect DEP would pay for the fencing in where the building was removed.

I think this agreement will satisfy both parties and allow us to move on.

Ken

From: Blanchard, Peter J [mailto:Peter.J.Blanchard@maine.gov]

Sent: Friday, August 04, 2006 9:59 AM

To: Kenneth O Lajoie

Cc: Benn, Tom

Subject: RE: Winthrop Commerce Center

Tom Benn is available Monday 8/10 at 1 PM we will meet at the chimney unless I hear differently from you.

From: Kenneth O Lajoie [mailto:klajoie@lajoiebros.com]

Sent: Thursday, August 03, 2006 4:54 PM

To: Blanchard, Peter J

Cc: Lou Carrier; Gene Green; 'John Lajoie'; John Martin; slajoie@lajoiebros.com

Subject: RE: Winthrop Commerce Center

Railings & Paving

AUGUSTA

17 STATE HOUSE STATION

AUGUSTA, MAINE 04955-0067

(207) 287-7688 FAX: (207) 287-2826

RAY BLDG., HOSPITAL ST.

BANGOR

108 HOGAN ROAD

BANGOR, MAINE 04401

(207) 941-4570 FAX: (207) 941-4584

PORTLAND

512 CANOE ROAD

PORTLAND, MAINE 04103

(207) 822-6300 FAX: (207) 822-6303

PRESQUE ISLE

1235 CENTRAL DRIVE, SKYWAY PARK

PRESQUE ISLE, MAINE 04769-2094

(207) 764-0477 FAX: (207) 760-3143



STATE OF MAINE
DEPARTMENT OF ENVIRONMENTAL PROTECTION

Sent: Thursday, August 03, 2006 1:15 PM
To: Kenneth O Lajoie
Subject: RE: Winthrop Commerce Center

JOHN ELIAS BALDACCI

DAVID P. LITTELL

GOVERNOR

COMMISSIONER

What other items did you want to discuss?

From: Kenneth O Lajoie [mailto:klajoie@lajoiebros.com]
Sent: Thursday, August 03, 2006 9:49 AM
To: Blanchard, Peter J
Cc: Lou Carrier; Gene Green; 'John Lajoie'; John Martin; slajoie@lajoiebros.com
Subject: RE: Winthrop Commerce Center

Peter,
I'll leave Monday afternoon open in my schedule. Let me know what time.
Ken

From: Blanchard, Peter J [mailto:Peter.J.Blanchard@maine.gov]
Sent: Thursday, August 03, 2006 8:59 AM
To: Kenneth O Lajoie
Cc: Benn, Tom
Subject: Winthrop Commerce Center

Hi Ken,
Sure, glad to discuss any remaining items. I am handing the project over to a new project manager at DEP, Tom Benn, who I would like to attend the meeting. I have the replacement of the fence along the top of the concrete as one item. Also outstanding invoice from DEP for non fund eligible expenses (asbestos work and lead paint). What other items did you folks have?

At this point, Monday afternoon looks best for me. Tom is out today but is expected in tomorrow. I will give you a call tomorrow to set a final date.
Peter

From: Kenneth O Lajoie [mailto:klajoie@lajoiebros.com]
Sent: Tuesday, August 01, 2006 1:14 PM
To: Blanchard, Peter J
Cc: Lou Carrier; Gene Green; 'John Lajoie'; John Martin; slajoie@lajoiebros.com
Subject: FW: Proposal for DEP

Peter,
Could we meet on site to discuss this issue and some of the other items that are still not complete? Wednesday or Friday morning looks good for me this week or Monday or Friday next week. Let me know what works for you.

AUGUSTA
17 STATE HOUSE STATION
AUGUSTA, MAINE 04333-0017
(207) 287-7688 FAX: (207) 287-2826
RAY BLDG., HOSPITAL ST.

BANGOR
106 HOGAN ROAD
BANGOR, MAINE 04401
(207) 941-4570 FAX: (207) 941-4584

Ken

PORTLAND
312 CANCO ROAD
PORTLAND, MAINE 04103
(207) 822-6300 FAX: (207) 822-6303

PRESQUE ISLE
1235 CENTRAL DRIVE, SKYWAY PARK
PRESQUE ISLE, MAINE 04769-2094
(207) 764-0477 FAX: (207) 760-3143

Benn, Tom

From: Blanchard, Peter J
Sent: Wednesday, August 23, 2006 12:29 PM
To: Benn, Tom
Subject: RE: Winthrop

Hey Tom,

Very timely e-mail. I was in Winthrop on site today cleaning boom. Sorry about the interoffice mailing on the fence quotes. Also the paving dimensions and an estimate on how much more we could pay for that. Not sure how the invoicing would unfold on that. I have not heard back from Ken with his invoice on the paving. I will send you inter-office this PM.

Everything looked ok in the stream, I got two bags of oily debris. I am not sure about whether we would have success getting the owners to remove debris and sheen from the booms. We could ask, however, they would need a place to dispose of the old boom and need replacement supplies, bags, etc. We have all that stuff in stock so could probably do the job more efficiently. If it gets to be a burden, than we can contract it out. I expect to keep the boom in the stream until late fall. Will remove prior to ice formation, then we can replace next spring. Until we figure out the heavy sheening near the building, it will be best to have some protection in place in the stream.

Last Saturday I attended the Annabessacook Lake Association meeting and made a power point presentation on the demolition and cleanup. I had been asked to come to the meeting last April and agreed, so that should be one of my last "outreach" meetings. They have been very supportive of the project. Glad to put you in touch with the president if you need a local contact for some reason. Sue Neal is the president and lives in Winthrop. They support keeping the boom in the Mill Stream too.

Thanks for keeping up on this one. Let me know if any questions.
Pete

From: Benn, Tom
Sent: Wednesday, August 23, 2006 11:44 AM
To: Blanchard, Peter J
Subject: RE: Winthrop

Pete: Hello...I haven't seen anything interoffice on fencing for the Commerce Center. I will be joining Jim Cummings on Friday morning to talk with residents (Heafley) who filed a 3PDC. Danny Davis is going too, as I understand. I just have not come up for air to discuss how to proceed and if there is something in addition that can/should be done there. I think you have done a "bang-up" job out there, Pete.

Relatedly, here's something to think about: Being sensitive to your schedule, and the Mill owner's involvement, do you think that it is reasonable that I ask them to periodically remove debris and sheen from the Mill Stream booms? I'm thinking that they are fairing pretty well with our excellent service out there...I welcome thoughts recommendations... All-the-BEST!

Tom

From: Blanchard, Peter J
Sent: Thursday, August 10, 2006 4:12 PM
To: Benn, Tom
Subject: RE: Winthrop

Thanks Tom,
I'll send the quotes for the fence interoffice to you. I expect that will be the next invoice/schedule item. Heard from Dan you will tag along for a boating outing? Perfect, hope it's a nice day.
Peter

From: Benn, Tom
Sent: Thursday, August 10, 2006 9:17 AM
To: Blanchard, Peter J
Subject: RE: Winthrop

Pete: THX...Appreciate all your work, and if your in-the-area, please let me know how the lewvels in Mill Stream are looking. Take care.

Tom

From: Blanchard, Peter J
Sent: Tuesday, August 08, 2006 10:09 AM
To: Benn, Tom
Subject: Winthrop Photos

Tom, these are the photos I took July 17, 2006. As we discussed since have placed new boom sections and continue to monitor the lower hard boom in place near Rt 202. Glad to meet to discuss further strategy as appropriate.

Peter

<< File: IMG_0287.JPG >> << File: IMG_0286.JPG >> << File: IMG_0285.JPG >>

Peter J. Blanchard
Division of Response Services
phone: (207) 287-3692
e-mail: peter.j.blanchard@maine.gov

Benn, Tom

From: Blanchard, Peter J
Sent: Friday, August 04, 2006 9:59 AM
To: 'Kenneth O Lajoie'
Cc: Benn, Tom
Subject: RE: Winthrop Commerce Center

Tom Benn is available Monday 8/10 at 1 PM we will meet at the chimney unless I hear differently from you.

From: Kenneth O Lajoie [mailto:klajoie@lajoiebros.com]
Sent: Thursday, August 03, 2006 4:54 PM
To: Blanchard, Peter J
Cc: Lou Carrier; Gene Green; 'John Lajoie'; John Martin; slajoie@lajoiebros.com
Subject: RE: Winthrop Commerce Center

Railings & Paving

From: Blanchard, Peter J [mailto:Peter.J.Blanchard@maine.gov]
Sent: Thursday, August 03, 2006 1:15 PM
To: Kenneth O Lajoie
Subject: RE: Winthrop Commerce Center

What other items did you want to discuss?

From: Kenneth O Lajoie [mailto:klajoie@lajoiebros.com]
Sent: Thursday, August 03, 2006 9:49 AM
To: Blanchard, Peter J
Cc: Lou Carrier; Gene Green; 'John Lajoie'; John Martin; slajoie@lajoiebros.com
Subject: RE: Winthrop Commerce Center

Peter,
I'll leave Monday afternoon open in my schedule. Let me know what time.
Ken

From: Blanchard, Peter J [mailto:Peter.J.Blanchard@maine.gov]
Sent: Thursday, August 03, 2006 8:59 AM
To: Kenneth O Lajoie
Cc: Benn, Tom
Subject: Winthrop Commerce Center

Hi Ken,
Sure, glad to discuss any remaining items. I am handing the project over to a new project manager at DEP, Tom Benn, who I would like to attend the meeting. I have

the replacement of the fence along the top of the concrete as one item. Also outstanding invoice from DEP for non fund eligible expenses (asbestos work and lead paint). What other items did you folks have?

At this point, Monday afternoon looks best for me. Tom is out today but is expected in tomorrow. I will give you a call tomorrow to set a final date.

Peter

From: Kenneth O Lajoie [mailto:klajoie@lajoiebros.com]

Sent: Tuesday, August 01, 2006 1:14 PM

To: Blanchard, Peter J

Cc: Lou Carrier; Gene Green; 'John Lajoie'; John Martin; slajoie@lajoiebros.com

Subject: FW: Proposal for DEP

Peter,

Could we meet on site to discuss this issue and some of the other items that are still not complete?

Wednesday or Friday morning looks good for me this week or Monday or Friday next week. Let me know what works for you.

Ken
