

B-11-1

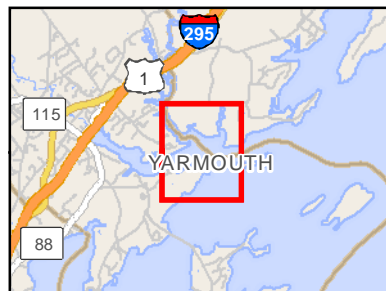
Cousins & Royal Rivers

Yarmouth / Freeport

0 1,000 2,000
Feet



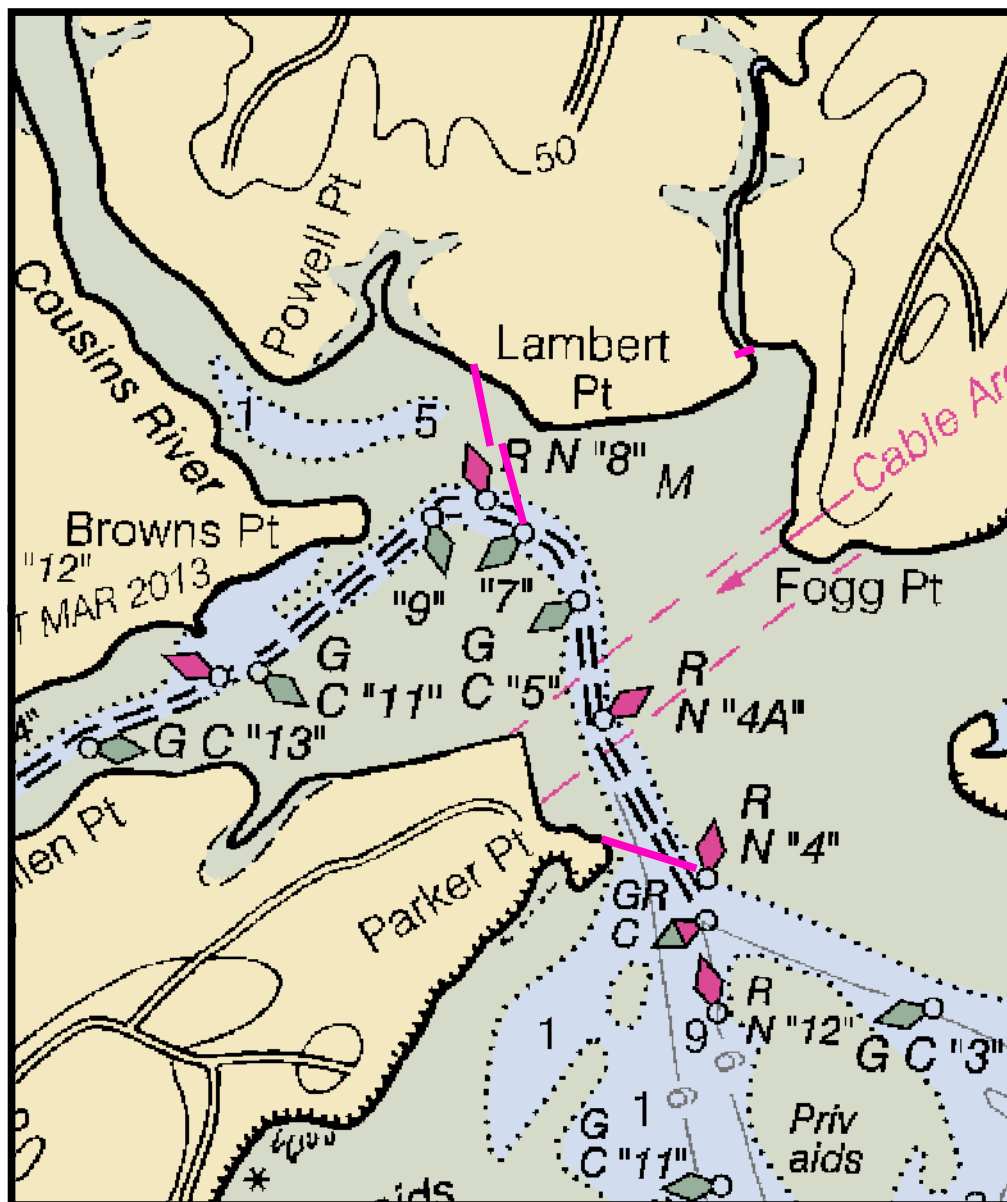
Printed: 1/31/2018



Legend	
	Boat Launch
	Containment boom
	Collection point
	Tide slide
	Vac truck
	Staging area
	Skimmer
	Response vessel
	Command post



Source: Esri, DigitalGlobe, GeoEye, Earthstar Geographics, CNES/Airbus DS, USDA, USGS, AEX, Getmapping, Aerogrid, IGN, IGP, swisstopo, and the GIS User Community



Cousins & Royal Rivers

Town Yarmouth / Freeport

Port Region Casco Bay

Latitude 43° 47.601' N **Longitude** -70° 8.491' W

Strategy B-11-1

NOAA Chart # 13290 **ESI Map #** 47B

EVI Map # 17

Resources At Risk

ESI Shoreline Type(s) Exposed wave cut platforms
Tidal flats

Environmental Concerns Diadromous fish runs, bird habitat, fringing marsh

Strategy Information

Strategy Purpose To keep oil from entering Cousins and Royal Rivers

Work Assignment Deploy 650 feet of boom across channel from Parker Point to vicinity of Red Nun #4. Deploy two, 500 foot sections of boom Between Green Can #7 and Lambert Point. If water depth allows, deploy 200 feet of boom across creek between Lambert Point and Fogg Point.

Staging Areas Yarmouth Town Landing Boat Ramp. Yarmouth Boat Yard. Royal River Boat Yard

Site Access Parker Point side: 265 Barn Road, Yarmouth
Lambert Point side: 69 Lambert Road, Freeport

Nearest Boat Ramp Yarmouth Town Landing Boat Ramp

Collection Points May be able to collect from fields at Lambert Point and Parker Point.

Approx. Tidal Range (feet) 9

Max Current (knots) **Flood** **Ebb** **Source**

Special Instructions Extensive tidal flats at low tide.

Recommended Equipment / Resources

Length of Boom (feet) 1850 **Type of Boom** 12" - 18" containment boom

Recommended Equipment (Minimum) 4 - anchor systems: 35 lb. Danforth or equivalent and line for 3:1 scope plus tag line with buoy.
4 - shoreside connections
1 - vacuum truck or skimmer and storage
2 - workboats with minimum 90 hp
2 - boat operators
4 - laborers

Unless otherwise indicated, the boom length given is the distance measured on the chart. Actual length required may vary with conditions.