

# Farm Bill Accomplishment Report Template

## Farm Bill Final Accomplishment Report

<b>Year:</b>	FY2013
<b>State:</b>	Maine
<b>Cooperative Agreement Name:</b>	Forest Pest Outreach and Survey Project
<b>Cooperative Agreement Number:</b>	13-8223-0662-CA
<b>Project Funding Period:</b>	9/20/2013 – 9/19/2014
<b>Project Report:</b>	<b>Farm Bill FPOSP Midyear Report</b>
<b>Project Document Date:</b>	12/18/2014
<b>Cooperators Project Coordinator:</b>	State Survey Coordinator
<b>Name:</b>	Karen Coluzzi, Lorraine Taft
<b>Agency:</b>	Maine Department of Agriculture, Conservation and Forestry
<b>Address:</b>	28 State House Station
<b>City/ Address/ Zip:</b>	Augusta/ME/04333
<b>Telephone:</b>	207-287-7551
<b>E-mail:</b>	Karen.l.coluzzi@maine.gov

Quarterly Report	<input type="checkbox"/>
Semi-Annual Accomplishment Report	<input type="checkbox"/>
Annual Accomplishment Report	<input checked="" type="checkbox"/>

## **1. Approach**

### **a. Describe specific activities and accomplishments...**

The cooperator will accomplish the following goals by the end of the agreement period:

1. Identify two communities within the state that are high risk for forest pest introduction and work with these communities to ensure that they are better prepared for the possible arrival of Asian longhorned beetle, emerald ash borer, and other invasive forest pests and pathogens. An effort will be made to select communities that have a significant minority component or other underserved audiences, particularly urban communities. Maine will select geographic areas that have not previously received a significant amount of outreach.

#### **Yarmouth, ME – April 22, 2014:**

We organized a street tree survey event that was held on Earth Day, April 22, 2014, in partnership with the town of Yarmouth's tree warden, Debra Hopkins, and the state urban forester, Jan Santerre. Yarmouth, ME is a community that is very proud of its street trees, having kept Herbie, the largest elm tree alive for years after many elm trees succumbed to Dutch elm disease. Yarmouth has been pushing to prophylactically treat its 330+ ash street trees (which replaced all the elms) to protect them from emerald ash borer, even though EAB has yet to be found in the state. Prior to the survey, the town put green ribbon around all the ash street trees to easily identify the number of trees at risk of attack by EAB. The survey event was designed to educate its citizens and other interested members of the public on how to visually inspect ash trees for signs of EAB, and not rely on pesticides to eliminate the threat.

Twenty-nine people participated in the survey, which received media coverage. Over 100 ash trees were inspected that day, with no confirmed signs of EAB.

#### **Paris Hill, ME – July 15, 2014:**

As a direct result of the training in Norway that was sponsored by Oxford County Soil & Water Conservation District (June 17, 2014), attendees from Oxford County, and CMP Forester, Robb Cotiaux, became concerned about the condition of ash trees in the Historic District of Paris Hill. The quarantined areas of NH are close to this area, with prevailing storm tracks blowing through from NH. We were asked to help coordinate and complete a survey of these ash trees by OCS&WCD. Prior to the survey date of July 15th, OCS&WCD personnel, Merle Ring, District Forester and training graduates flagged over 200 ash trees in the Historic District, as well as marking over 25 larger multiage ash stands. They held a community meeting of residents of the area to explain the purpose of the survey and arranged for newspaper coverage to further education on the EAB. Thirty people participated in the survey on July 15th, including foresters and entomologists from the Department of Agriculture, Conservation & Forestry, Lucas Trees arborists with the CMP Forester, and volunteers. All designated ash was surveyed, as well as a few landscape trees where landowners requested they be included in the survey. No EAB were found and all decline and/or damage could be explained by natural storm weather damage, poor location of the tree, or human error in caring for landscape trees.

2. Collaborate with the national Don't Move Firewood campaign to create a clear and consistent regionally specific message to be distributed at the state level. Cooperation with DMF will allow states to:
  - Work with DMF to design state-specific electronic printable versions of DMF posters, brochures, and postcards
  - Receive bulk quantities of DMF pre-printed educational materials
  - Utilize the DMF resource library to find campaign materials to build upon (i.e. prevent "reinventing the wheel")
  - Guest post local information and press releases to DMF's blog and facebook account
  - Access the FPOSP website, now hosted via TNC's contractors' non-profit Google account
  - Use DMF costumes through their costume share program

We have worked with Leigh Greenwood from DMF on a number of issues pertaining to invasive forest pests and outreach. We have ordered many quantities of Don'tMoveFirewood materials, including DVDs, stickers, water bottles, and Frisbees. We were also given the graphic for their EAB temporary tattoo, which we submitted to a tattoo manufacturing company so we could print our own as needed. We also collaborated on hashtag titles so that all Facebook and Twitter posts can be organized by topic. We also cross-post on each other's Facebook pages. There is no need to borrow their costumes as we have our own.

We have not worked together on state-specific DMF materials, but we are planning to during the next grant cycle.

3. Design and implement outreach targeting employees of industries handling potentially regulated materials that are considered to be high risk pathways for the spread of forest pests and pathogens. This could include people who work in and around warehouses and storage facilities, nursery and garden centers, saw mills and other vulnerable points of pest introduction.

We have not designed anything specifically for industry yet, but we've had the opportunity to extend outreach and education to some warehouse facilities that are importing goods on pallets from other parts of or outside the country. One industrial manufacturing warehouse contacted us through our ALB website reporting form because they captured a longhorned beetle that appeared to have traveled up from Texas/Mexico. This was a good opportunity to share information on ALB, EAB, BSLB, and other exotic woodboring pests. We continue to distribute outreach materials to nurseries, garden centers, saw mills, power companies, and arborist companies. We have plans to design materials more specific to these groups, although this was not accomplished during this funding cycle.

4. Design and administer a training program for volunteer first detectors that targets environmental organizations, the tree care industry, utility companies, educators and

concerned community members. First detectors will learn about forest pests of concern, how to respond to potential detections, and who to contact in the event of detection.

We have a well-developed training program for first detectors in the “green”-industry sector that we started in 2009. Our trainings are 4-5 hours long, and participants receive a training binder that contains copies of presentations, pest alerts, samples of outreach materials (brochures, cards, tattoos, etc.), talking points, and other resources they would need to conduct their own outreach and surveys. We conducted five trainings, and we chose areas of the state that are high risk (due to industry, tourism, transportation routes, etc.) but are underserved.

<b>Date</b>	<b>Location</b>	<b>Trainer</b>	<b>Host</b>	<b>Other organizations represented</b>	<b># trained</b>
2/8/14	Dover-Foxcroft, Piscataquis Co.	ME DACF	University of Maine Cooperative Extension, Piscataquis Co.	State Park Manager, licensed foresters (3), SWOAM, Master Gardeners, Realty Company, Winthrop Cons. Comm. etc.	24
3/11/14	Lewiston, Androscoggin Co.	ME DACF	City of Lewiston, Dept. Public Works	Auburn Public Works, Landscape companies (4), Master Gardeners, Bates College, City Councillors (2), licensed forester, etc.	31
3/13/14	Jefferson, Lincoln Co.	ME DACF	Hidden Valley Nature Center	Appalachian Trail Educator, AT Volunteer, Medomak Valley Land Trust, licensed foresters, etc.	9
5/14/14	Acadia National Park, Hancock Co.	ME DACF	Acadia National Park	Maine Conservation Corps., Unity College, licensed foresters. Lawn care companies, etc.	39
6/17/14	Norway, Oxford Co.	ME DACF	Oxford Co. Soil and Water Conservation District	Central Maine Power, New England Forestry Consultants, Integrated Forest Management, Maine Natural Areas Program, etc.	26

5. Evaluation Plans: Each state will maintain statistics about the numbers of events, estimated numbers of attendees at events, types of materials generated and distributed, numbers of volunteers recruited and community preparedness plans or activities. This information will be included as part of a final report based on the suggestion’s reporting requirements.

A database of all trained volunteers from 2009 to the present was created in 2009 and is updated frequently. Also included are names and contacts of people that have expressed interest in receiving information and updates. Currently, there are approximately 260 names in the database. A volunteer helps by entering events into a spreadsheet that we then upload to the database. The FPOSP volunteer coordinator, Lorraine Taft, sends bimonthly emails of program updates, upcoming events, solicitation of feedback, words of encouragement, etc. to all the contacts in the database. Most of the outreach events we participate in include volunteers

from this database. We also maintain Facebook and Twitter pages (Maine Bug Watch) that not only inform followers of pest updates, but help to solicit volunteers and set up new outreach events. Every month or two, we release a newsletter (Invasive Pest Outreach Information) containing updates about invasive forest pests, upcoming events, and other pertinent information. There are currently 920 subscribers to the newsletter.

6. Multi-state Project Coordinators: The state survey coordinators of Maine, Massachusetts and Vermont and the state plant regulatory official of New Hampshire will serve as project managers and will provide overall guidance and general cohesion for the project. The project manager responsibilities include:
  - organizing quarterly conference calls
  - facilitating opportunities for regional cooperation
  - compiling a final report summarizing outreach efforts for all participants


Multi-state project coordination had occurred - two states (MA, VT) hosted conference calls with over 20 states participating on each call. An end of year survey was conducted and results from Maine are recorded below. Near the end of the project, ME hosted a webinar to discuss results of a related Farm Bill project – Forest Pest Outreach Evaluation – to aid in writing suggestions for next cycle’s Farm Bill projects. A recorded version of the webinar can be found here... <http://www.maine.gov/dacf/php/caps/ALB/webinar.shtml>

7. Additional Accomplishments:

**Ash Tree Tagging Events:**

During Emerald Ash Borer Awareness Week, we prompted a number of communities to tag ash trees (see photos at end of report). Ash trees were tagged in Acadia National Park throughout Blackwoods Campground; street trees were tagged in Lewiston (the second largest city in Maine), and also in Orono. Some of these events received television coverage.

**Approved and signed by**

  
\_\_\_\_\_  
Cooperator

Date: 12/18/2014

\_\_\_\_\_  
ADODR

Date: \_\_\_\_\_

- Number of outreach events participated in (organized, attended, or sent materials to): **104**
  - o Presentations, including Train-the-Trainer events: 61
  - o Tabling Events: 43
  - o Events materials were sent to: 71
  
- Total people impacted by forest pest outreach: **114,691 (direct); 2 million (indirect)**
  - o Since teachers, scout leaders, 4H, and professionals who have been including the information in their curriculum, parks or consumer contact do not report, our impact numbers are much higher than those gained from reporting. There are other challenges: e.g. Acadia National Park has made a significant focus on invasive tree pests this season and approx. 2 million people visit the park each year. It's always challenging to count people while staffing a table, too.
  
- Pests Covered: **6 primarily**
  - o ALB
  - o EAB
  - o HWA
  - o EHS
  - o Winter Moth
  - o BSLB
  
- Approximate number of pest reports fielded by Forest Pest Outreach programs: **50 calls; 35 online reports.**
  - o Number of reports is down from previous years, which we think is due to increased education and awareness of the ALB lookalikes. Our online report form shows the whitespotted sawyer and how to tell the difference between it and ALB. We encourage people to *not* make reports if the scutellum is white. Also, some reports go to the Maine Forest Service District Foresters and Entomologists and are not reported here.
  
- Approximate number of outreach materials distributed: **300,000**
  - o bookmarks
  - o buttons/stickers/keychains/magnets
  - o coloring sheets
  - o crafty items
  - o id cards\*
  - o pencils\*
  - o posters
  - o printed handouts/pamphlets
  - o tabletop displays
  - o temporary tattoos\*
  - o t-shirts
  - o USFS bound ALB tree guide
  - o \*most commonly distributed
  
- Internet for outreach? **YES**
  - o Website ([www.maine.gov/alb](http://www.maine.gov/alb); [www.maine.gov/eab](http://www.maine.gov/eab))
  - o Facebook (Maine Bug Watch)

- Twitter (<https://twitter.com/MaineBugWatch>)
- Email
- Invasive Pest Outreach Updates - Gov Delivery (online newsletter)
  
- **Volunteers:**
  - 5 Train-the-Trainer sessions
  - **129 volunteers trained**
  - 104 outreach activities volunteers participated in
  - 6 pest surveys involving volunteers
  
- **Media Coverage:**
  - Articles were published by volunteers in the Blue Hill Trust newsletter, Belgrade Lakes newsletter, National Park Service – Acadia National Park website, etc.; interviews were published in the local newspapers in the Norway and Yarmouth communities. Hidden Valley Nature Center has slides of the FPOSP beetles and table on their website: [www.hvnc.org](http://www.hvnc.org). Northern Woodlands interviewed volunteers at the Hidden Valley Forest Festival.
  - Television crews filmed and interviewed during Yarmouth and Lewiston ash tagging and surveys.
  
- **Top successes FY13:**
  - Joined the Gov Delivery newsletter service in June (Invasive Pest Outreach News), and the number of subscribers is over 900 -- all self-subscribed.
  - We found new tabling opportunities at sportsmen oriented shows that were very well attended with high interest in our information.
  - Common Ground Fair, Ossipee Valley, Oxford Fair and our Train the Trainers were outstanding this year.
  
- **What didn't work well this year:**
  - We had a challenge getting reports of outreach being done by our trained people. So many are professionally employed in related fields and embed the material into their work, therefore not feeling that it is part of the outreach numbers. A tool to facilitate reporting is still alluding us.
  
- **What the plan is for 2014-15:**
  - Focus on community preparedness to under-served towns with limited resources to develop plans for dealing with impending forest pests;
  - Develop a functional, effective tool for people to self-report the ways they are continuing to do outreach.

Yarmouth Tree Survey, April 22, 2014, Earth Day





Paris Hill Survey, July 15, 2014



# Ash Tree Tagging

**Look UP  
Maine!**

This **ASH TREE** gives back

**\$ 196**


worth of environmental benefits  
**EVERY YEAR.**

All of Maine's ash trees could be lost to the tree killing pest, emerald ash borer.

**YOU CAN HELP**

- ➔ Know the pest
- ➔ Stop the spread, don't move firewood
- ➔ Look UP to look out for the pest

Learn more and report at:  
[www.maine.gov/eab](http://www.maine.gov/eab)




Steve Murch, Lewiston City Arborist



Tagged Ash Tree at Sieur de Monts, Acadia National Park



FPOSP Volunteer, Lewiston

**Invasive Pest Outreach Information**

- [News on Emerald Ash Borer](#)
- [New Tree Pest Discovery](#)
- [Learning Opportunities - Workshops & Webinars](#)
- [Maine's Forest & Tree Pest Emergency Action Plan](#)

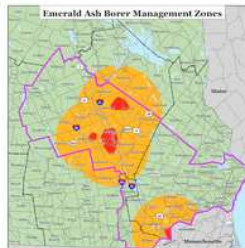
**News on Emerald Ash Borer**

[New Host Species for Emerald Ash Borer](#)

A researcher at Wright State University in Ohio recently discovered that the emerald ash borer does not colonize only ash trees (*Fraxinus spp.*). The white fringetree (*Chionanthus retusus*), a close relative of ash, apparently makes a nice host also. This discovery was confirmed by the USDA this week.



The natural range of white fringetree is from New Jersey south to Florida, but there are some plantings of this tree in warmer zones of Maine.



Emerald ash borer (EAB) has been found in [Rockingham County, New Hampshire](#). This county borders Maine.

EAB has not been detected in Maine to this date. A number of survey methods are being used to try to detect this insect early. Recognizing the signs of an infested tree is key to early detection. This [website](#) has good information on what EAB looks like and the signs of infestation on its host trees.

**New Tree Pest Discovery**



[Red pine scale was discovered](#) for the first time in Maine this fall in Mount Desert (Hancock County) on dying red pine trees.

National Park Service (NPS) biologists are working with the Maine Forest Service and US Forest Service entomologists and other conservation partners on response planning, including gathering more information about the extent of the infestation.

Please report any suspect infestation of red pine scale to the [Maine Forest Service](#).

**Learning Opportunities - Workshops & Webinars**

**Webinar - Today, October 17, 2014, 2:00 PM ET**

["What Works? Evaluating Forest Pest Outreach Efforts"](#)

<http://stateofmaine.adobeconnect.com/r1qs7cen94v/>

The University of Maine recently completed a Farm Bill project titled, "What Works? Evaluating Forest Pest Outreach Efforts". This project was designed to determine the most effective methods of outreach utilized by Maine, New Hampshire, and Vermont during the earlier years of the Forest Pest Outreach and Survey Project.

Click the link above to access the webinar. A recording will be made available here... <http://www.maine.gov/dacf/php/index.shtml>

**Workshop - Friday, November 7, 2014, 3:00 - 5:00 PM ET**

Maine Lakes Resource Center, Belgrade Village

[Invasive Insects of Trees - New and Emerging Threats](#)

**Maine's Forest & Tree Pest Emergency Action Plan**

Maine's plan for dealing with a forest and tree pest emergency can be found on the [Maine Department of Agriculture, Conservation and Forestry, Division of Animal and Plant Health's website](#).