

# Exotic Longhorned Beetle Lookalikes

Do not report insects "Found in Maine"

**Citrus longhorned beetle**  
(*Anoplophora chinensis*) (near R)

**Asian longhorned beetle**  
(*Anoplophora glabripennis*) (far R)

1 - 1<sup>1</sup>/<sub>2</sub> inch long

Glossy-black with distinct white spots

**REPORT IF FOUND**



**Whitespotted sawyer**  
(*Monochamus scutellatus*)

3/4- 1<sup>1</sup>/<sub>4</sub> inch long

Bronze-black with indistinct white spots

White dot at base of wing covers

**FOUND IN MAINE**

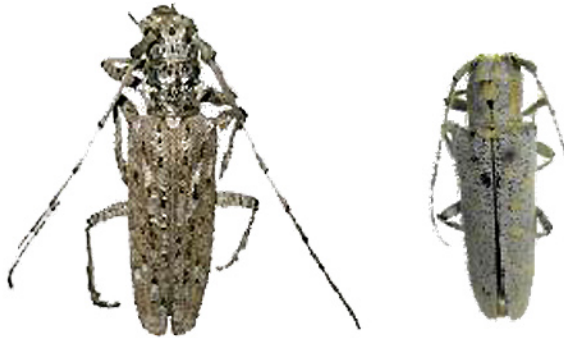
**Northeastern sawyer**

(*Monochamus notatus*)

3/4- 1<sup>1</sup>/<sub>2</sub> inch long

Mottled light brown/white,  
no distinct spots

**FOUND IN MAINE**



**Poplar borer**

(*Saperda calcarata*)

About 1 inch long

Bluish-gray with faint yellow splotches

**FOUND IN MAINE**

**Brown prionid**

(*Orthosoma brunneus*)

1 - 1<sup>1</sup>/<sub>2</sub> inch long

Light chestnut brown, no spots

**FOUND IN MAINE**



**Broadnecked root borer**

(*Prionus laticollis*)

1 - 1<sup>1</sup>/<sub>2</sub> inch long

Black with no white markings;  
solid black antennae

**FOUND IN MAINE**

**A longhorned beetle**

(*Graphisurus fasciatus*)

1/3 - 2/3 inch long

Dark with gray to light brown mottling;  
antennae banded

**FOUND IN MAINE**



**Western conifer seed bug**

(*Leptoglossus occidentalis*)

About 3/4 inch long

Various shades of brown with a distinct  
geometric pattern on wings.

Often seen indoors

**FOUND IN MAINE**

If you see the citrus longhorned beetle or the Asian longhorned beetle in Maine, capture it or take a picture, and report to the Maine Department of Agriculture, Conservation and Forestry...

[www.maine.gov/alb](http://www.maine.gov/alb) -or- CALL: (207) 287-3891 -or- EMAIL: [bugwatch@maine.gov](mailto:bugwatch@maine.gov)