


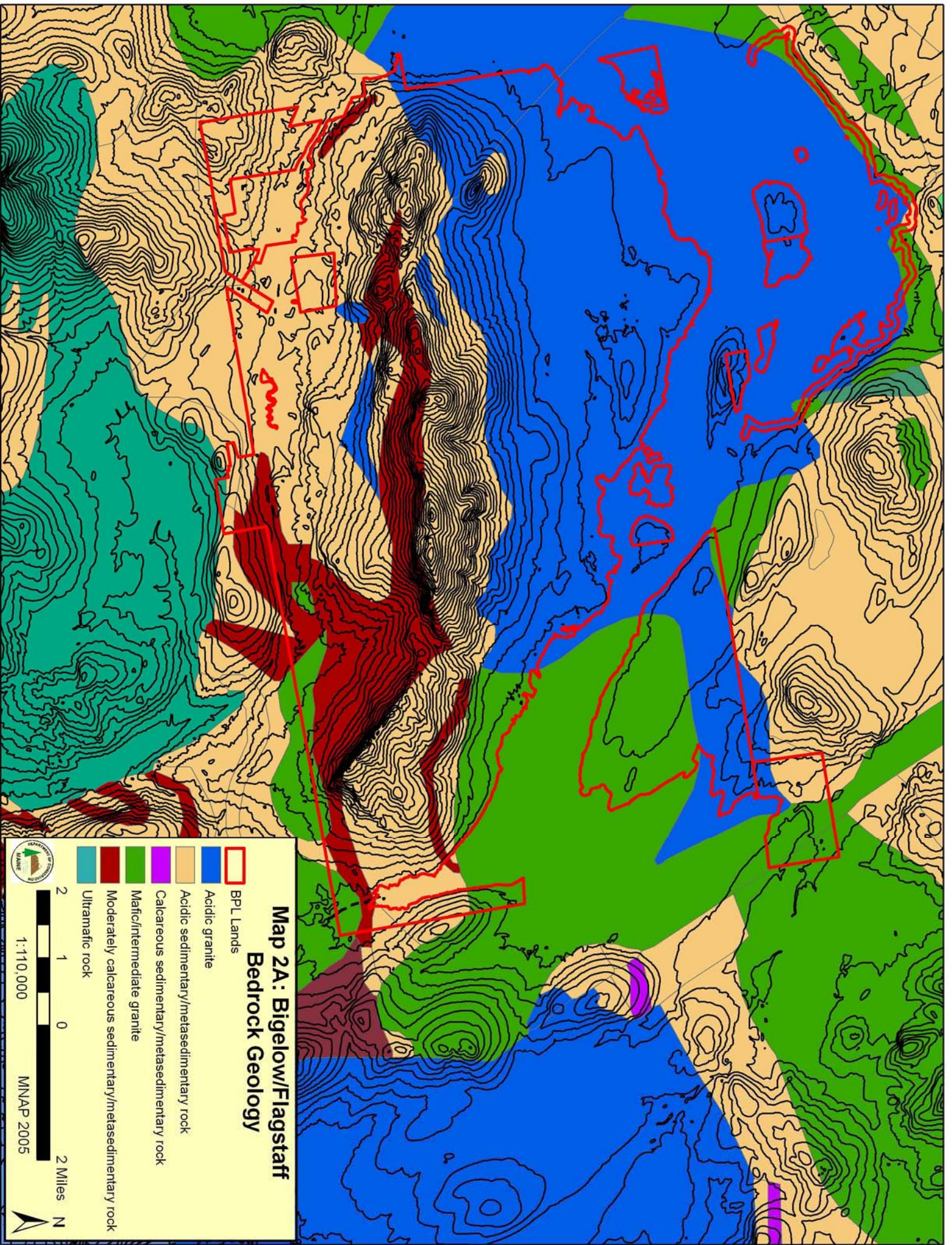
Map 1: Bigelow/Flagstaff Conservation Land

- BPL Lands
- Ecological Reserve
- Conserved Lands


1 0.5 0 1 Miles


1:100,000 MNAP 2005








**Map 2A: Bigelow/Flagstaff
Bedrock Geology**


 BPL Lands


 Acidic granite


 Acidic sedimentary/metasedimentary rock

 Calcareous sedimentary/metasedimentary rock


 Mafic/intermediate granite


 Moderately calcareous sedimentary/metasedimentary rock

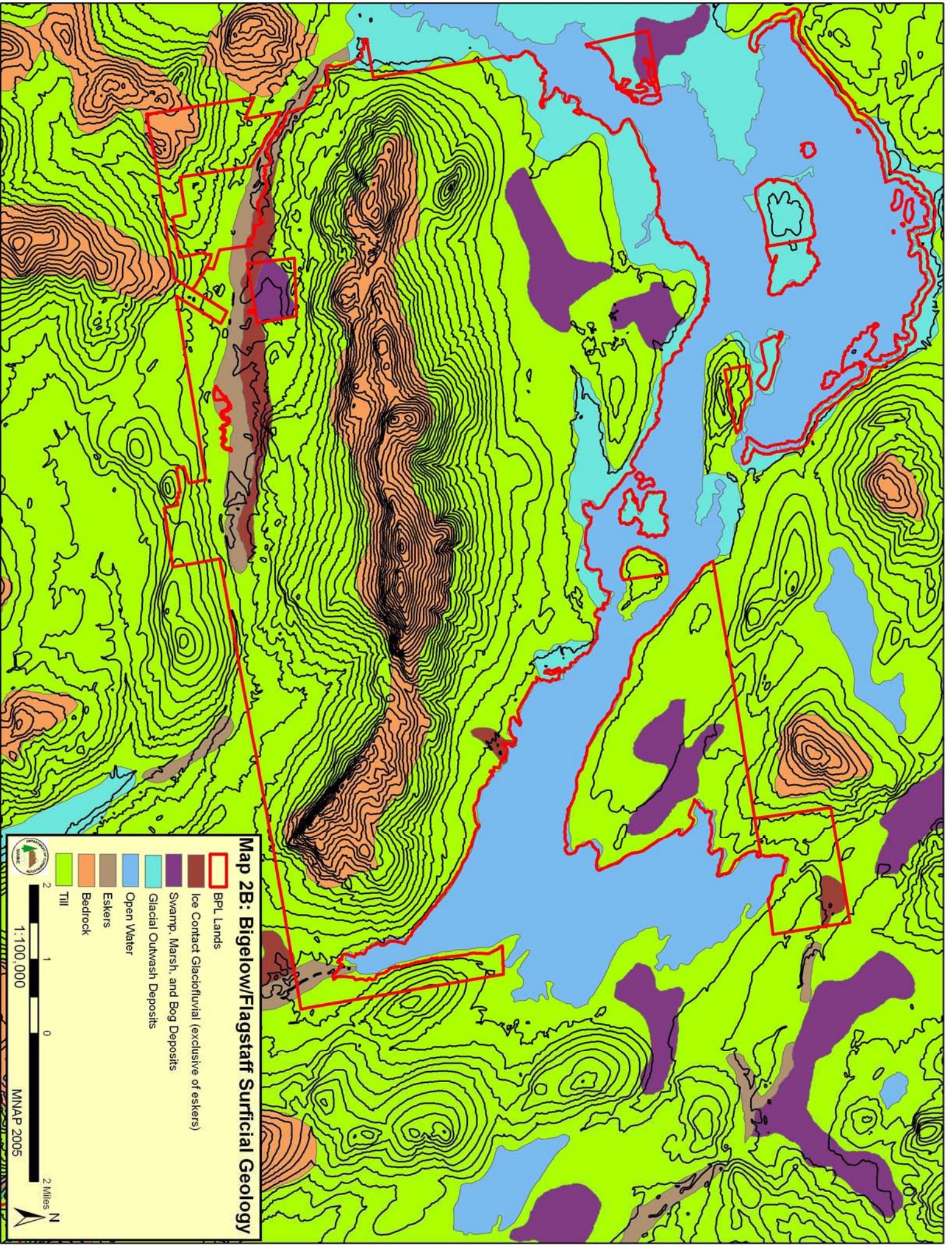
 Ultramafic rock

 0 1 2 Miles

1:110,000 MNAP 2005


 N








Map 2B: Bigelow/Flagstaff Surficial Geology

 BPL Lands


 Ice Contact Glaciofluvial (exclusive of eskers)

 Swamp, Marsh, and Bog Deposits

 Glacial Outwash Deposits

 Open Water

 Eskers

 Bedrock

 Till

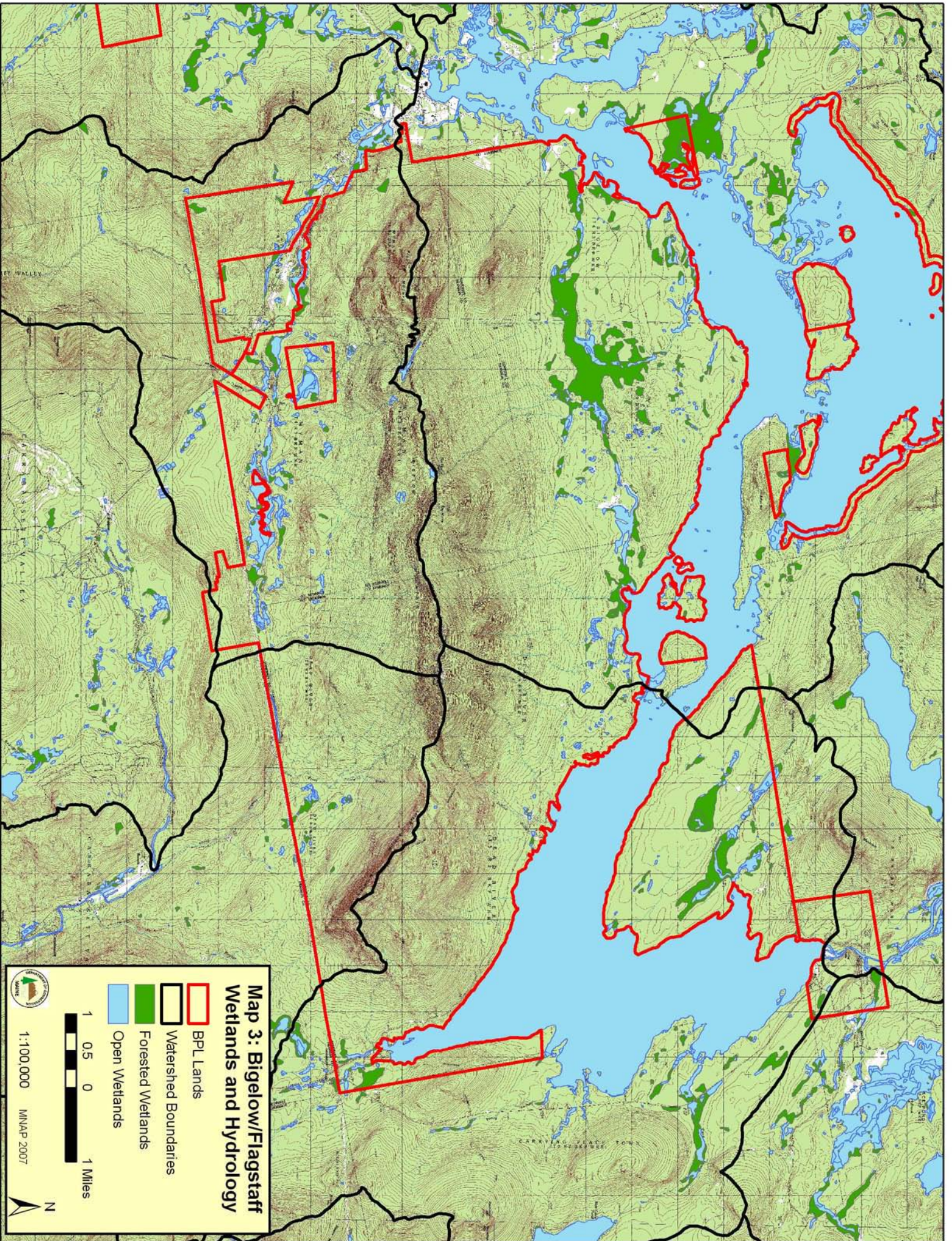


1:100,000


0 1 2 Miles





MNAP 2005




**Map 3: Bigelow/Flagstaff
Wetlands and Hydrology**

 BPL Lands

 Watershed Boundaries

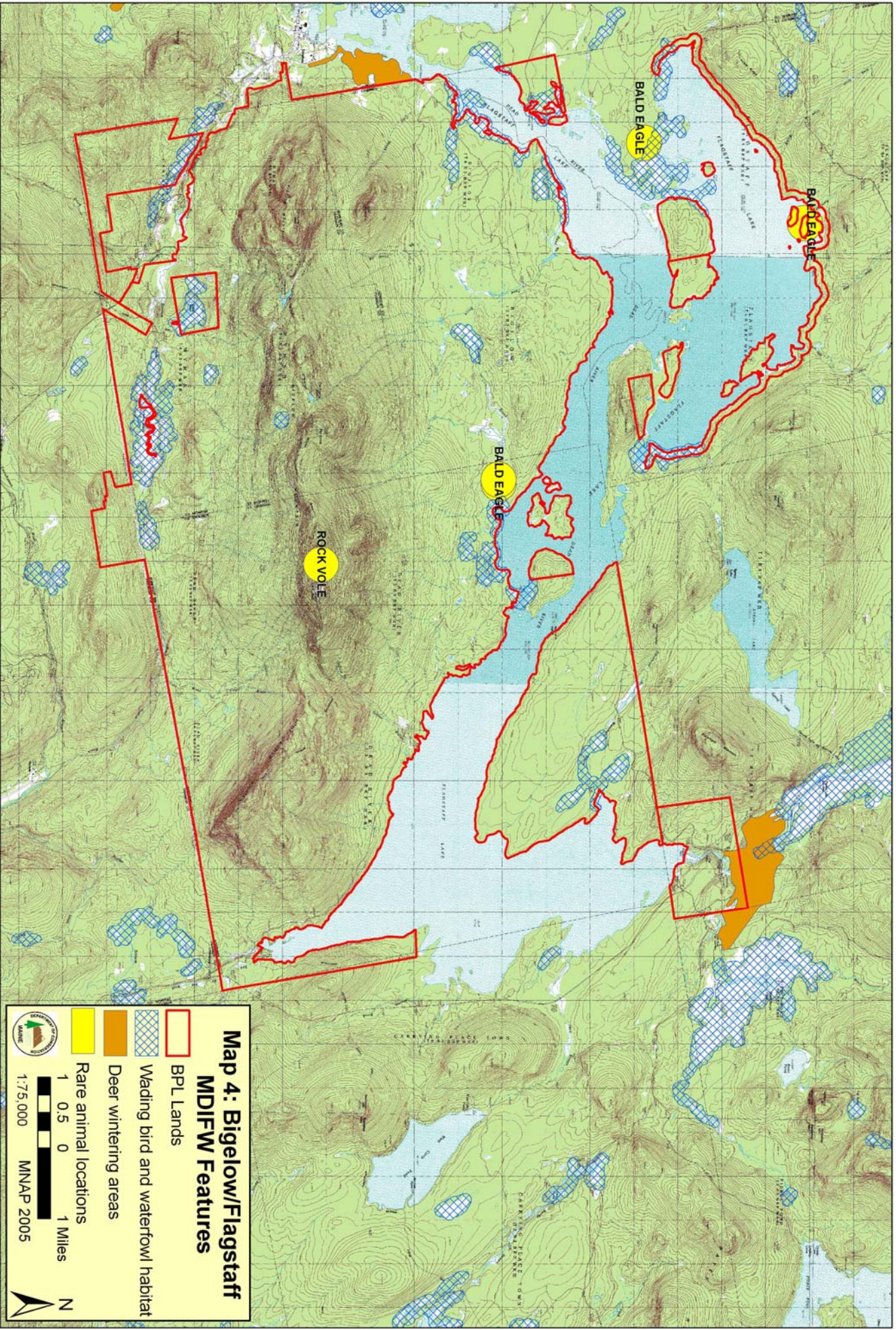
 Forested Wetlands

 Open Wetlands







1:100,000 MMAP 2007



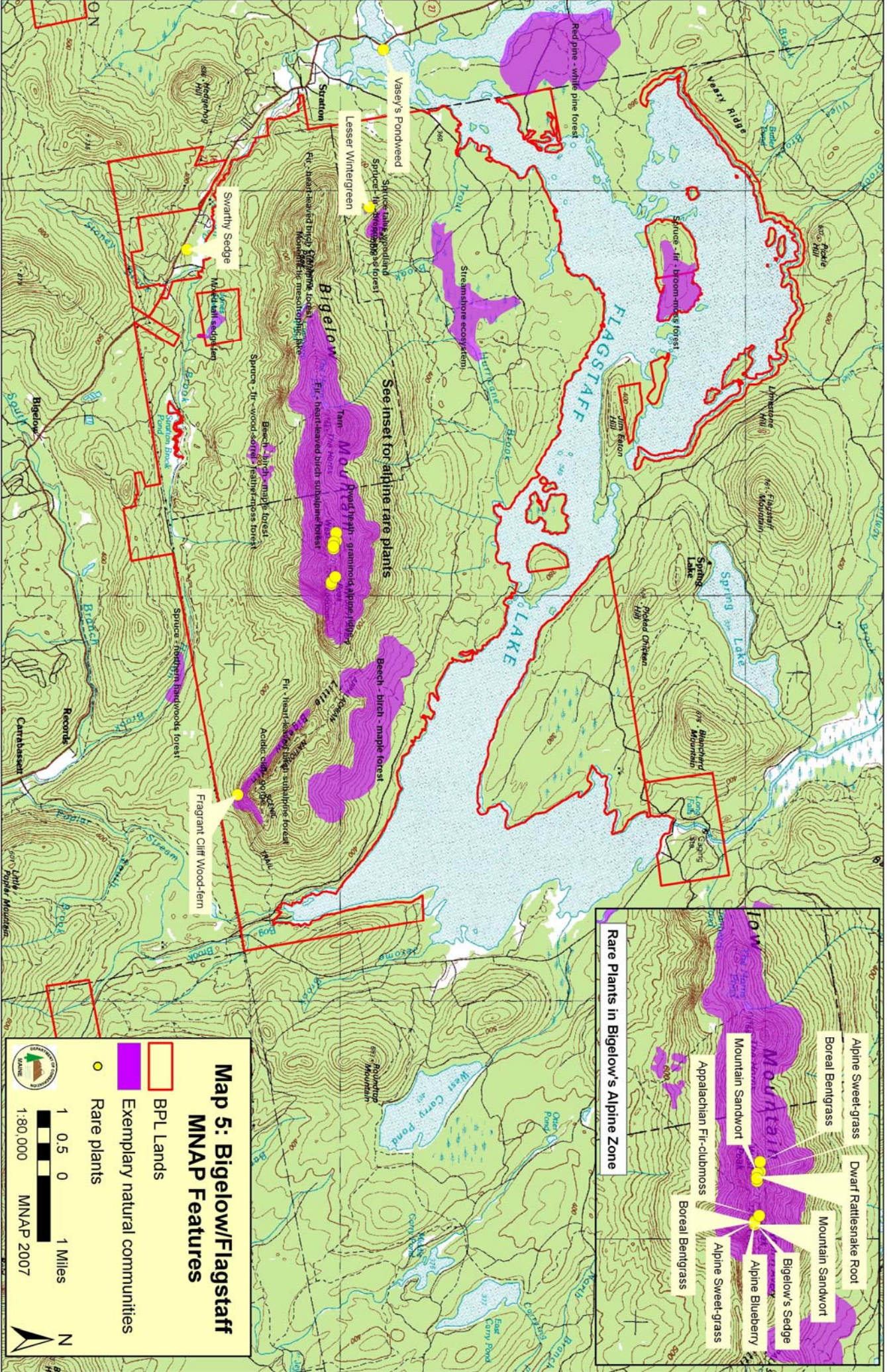


**Map 4: Bigelow/Flagstaff
MDIFW Features**

-  BPL Lands
-  Wading bird and waterfowl habitat
-  Deer wintering areas
-  Rare animal locations

1 0.5 0 1 Miles
1:75,000 MINAP 2005





See inset for alpine rare plants

Map 5: Bigelow/Flagstaff MNAP Features

- BPL Lands
- Exemplary natural communities
- Rare plants

1 0.5 0 1 Miles
1:80,000 MNAP 2007

Rare Plants in Bigelow's Alpine Zone

- Alpine Sweet-grass
- Dwarf Rattlesnake Root
- Boreal Berggrass
- Mountain Sandwort
- Bigelow's Sedge
- Alpine Blueberry
- Appalachian Fir-clubmoss
- Boreal Berggrass
- Alpine Sweet-grass