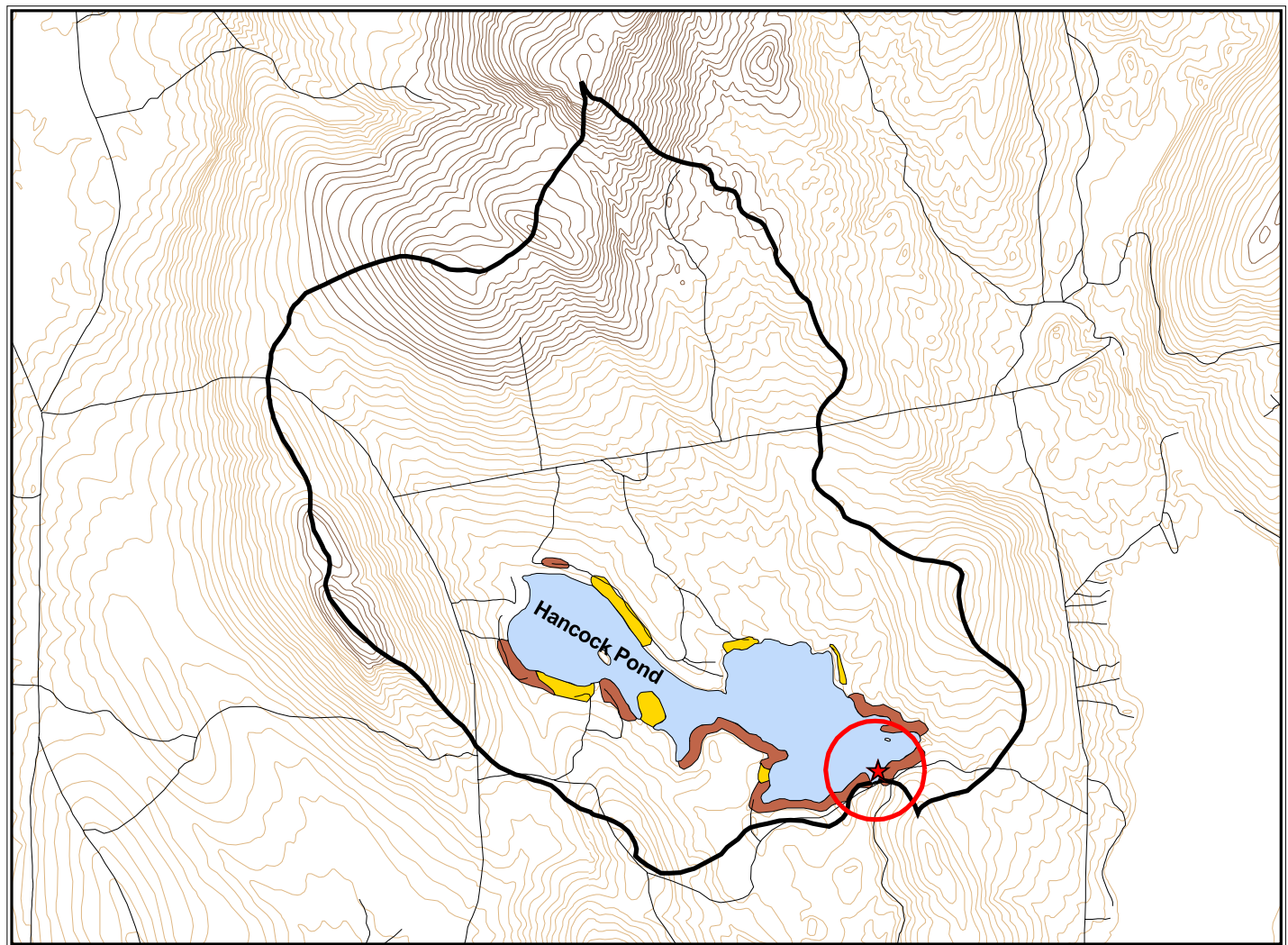




Madison & Anson Public Water Supply Elevation Contours & Erosion Potential



3000 0 3000 6000 Feet



Legend

★	Madison & Anson Water Districts Intake	Erosion Potential	Elevation Contours (feet, msl)	771 - 950
○	1,000 ft. Intake Buffer	High	280 - 400	
●	Hancock Pond	Moderate	401 - 500	
○	Watershed Boundary		501 - 620	
—	Public Roads		621 - 770	

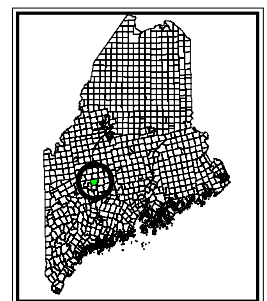


Figure 3

- 1) Base data layers are from the Maine Office of GIS.
- 2) Watershed boundary, intake and buffer locations are from the Maine Drinking Water Program.
- 3) Data are for planning purposes only.

Scale 1:42,000
1 inch = 3,500 feet
3/3/03