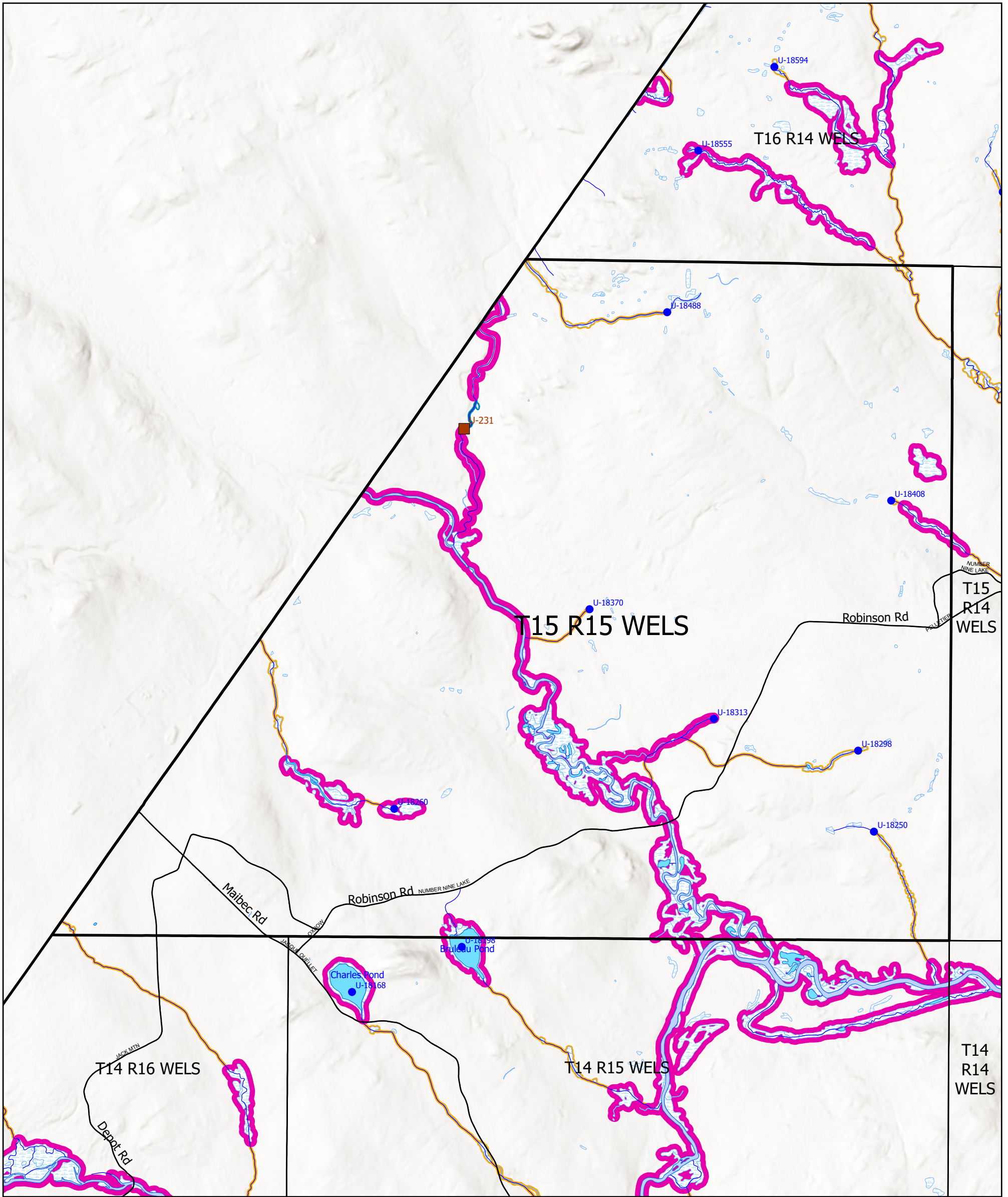


Statewide Standards for Timber harvesting in the Shoreland Area* Map



January 2026

Forest Operation Notification & Shoreland Area * Map Adoption Date: 1/2/2026

Wetlands

Non-Forested Wetlands

This map is **ADVISORY**, for planning purposes only. Actual ground conditions and water body locations determine where and how MFS timber harvesting rules apply. Contact the MFS for additional information/assistance from a MFS Forester.

Maine Forest Service

For additional information, please contact the MFS at:
1-207-287-2791 or 1-800-367-0223 (In-State)

Email us at: forestinfo@maine.gov
or on the web at: www.maineforestservice.gov

T15 R15 WELS

Buffers

- 75 Foot Buffer Zones Adequate shade and shoreline integrity (unorganized)
- 75 Foot Buffer Zones Streams between the 25 square mile drainage point and the 50 square mile drainage point (unorganized)
- 250 Foot Buffer Zones Great Ponds Coastal Wetlands Tidal Waters Nonforested wetlands greater than 10 acres Rivers below the 50 square mile drainage point (unorganized)



Drainage Points

- U-1234 300 Acre Drainage Point U12345 - ID Number (Location Info)
- U-56 25 Square Mile Drainage Point U67 - ID Number (Location Info)
- U-78 50 Square Mile Drainage Point U89 - ID Number (Location Info)

SWS data for the organized towns are not displayed on the map.



Department of Agriculture, Conservation and Forestry
Maine Forest Service
Forest Policy & Management

* See MFS Rule - Chapter 21 for additional information.