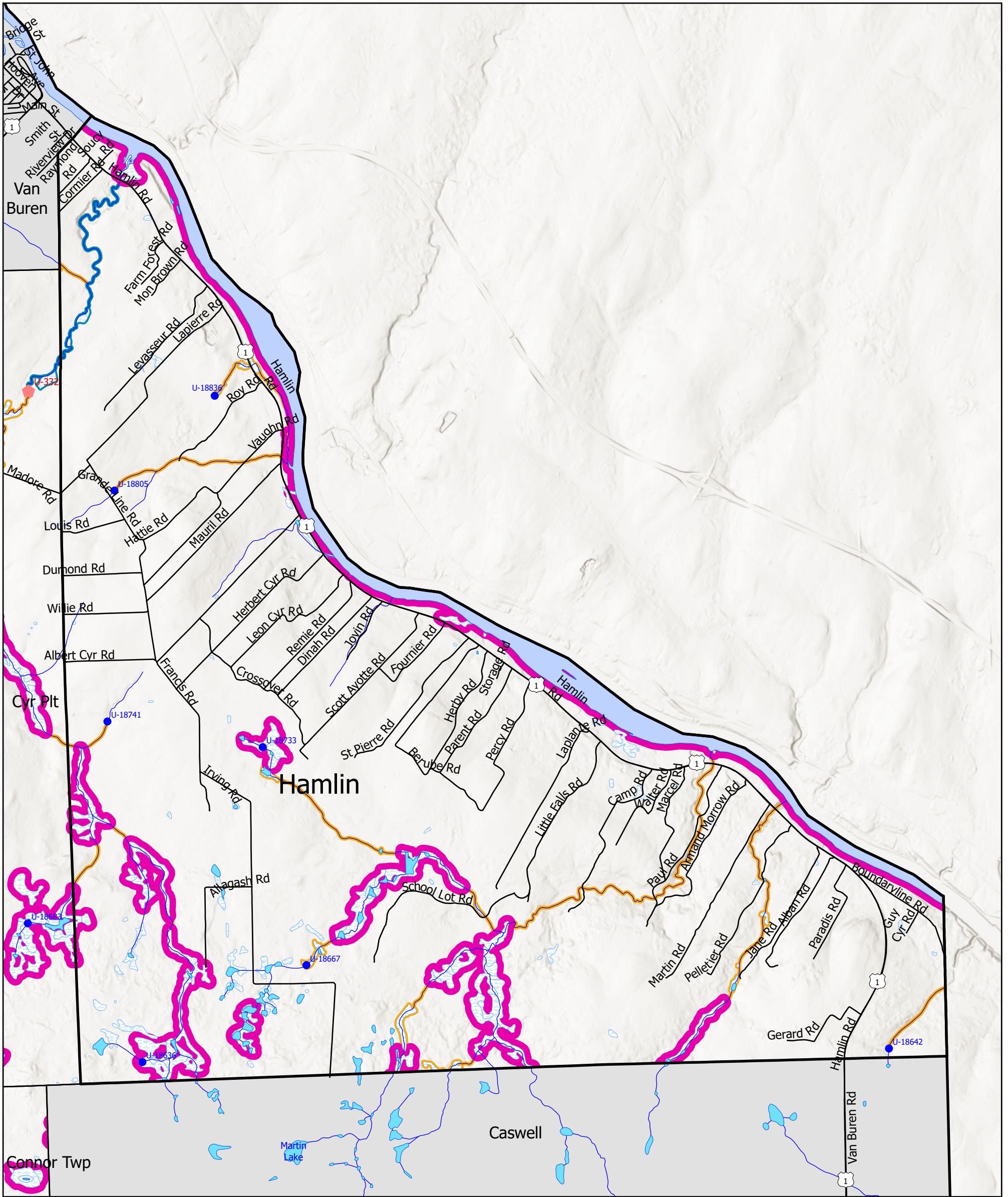


# Statewide Standards for Timber harvesting in the Shoreland Area\* Map



January 2026

## Forest Operation Notification & Shoreland Area \* Map

Adoption Date: 1/2/2026

### Wetlands

Non-Forested Wetlands

This map is ADVISORY, for planning purposes only. Actual ground conditions and water body locations determine where and how MFS timber harvesting rules apply. Contact the MFS for additional information/assistance from a MFS Forester.

### Maine Forest Service

For additional information, please contact the MFS at:  
1-207-287-2791 or 1-800-367-0223 (In-State)

Email us at: [forestinfo@maine.gov](mailto:forestinfo@maine.gov)

or on the web at: [www.maineforestservice.gov](http://www.maineforestservice.gov)

### Hamlin

### Buffers

75 Foot Buffer Zones  
Adequate shade and shoreline integrity (unorganized)

75 Foot Buffer Zones  
Streams between the 25 square mile drainage point and the 50 square mile drainage point (unorganized)

250 Foot Buffer Zones  
Great Ponds  
Coastal Wetlands  
Tidal Waters  
Nonforested wetlands greater than 10 acres  
Rivers below the 50 square mile drainage point (unorganized)



### Drainage Points

- U-1234 300 Acre Drainage Point  
U12345 - ID Number (Location Info)
- U-56 25 Square Mile Drainage Point  
U67 - ID Number (Location Info)
- U-78 50 Square Mile Drainage Point  
U89- ID Number (Location Info)

SWS data for the organized towns are not displayed on the map.



Department of Agriculture, Conservation and Forestry  
Maine Forest Service  
Forest Policy & Management

\* See MFS Rule - Chapter 21 for additional information.