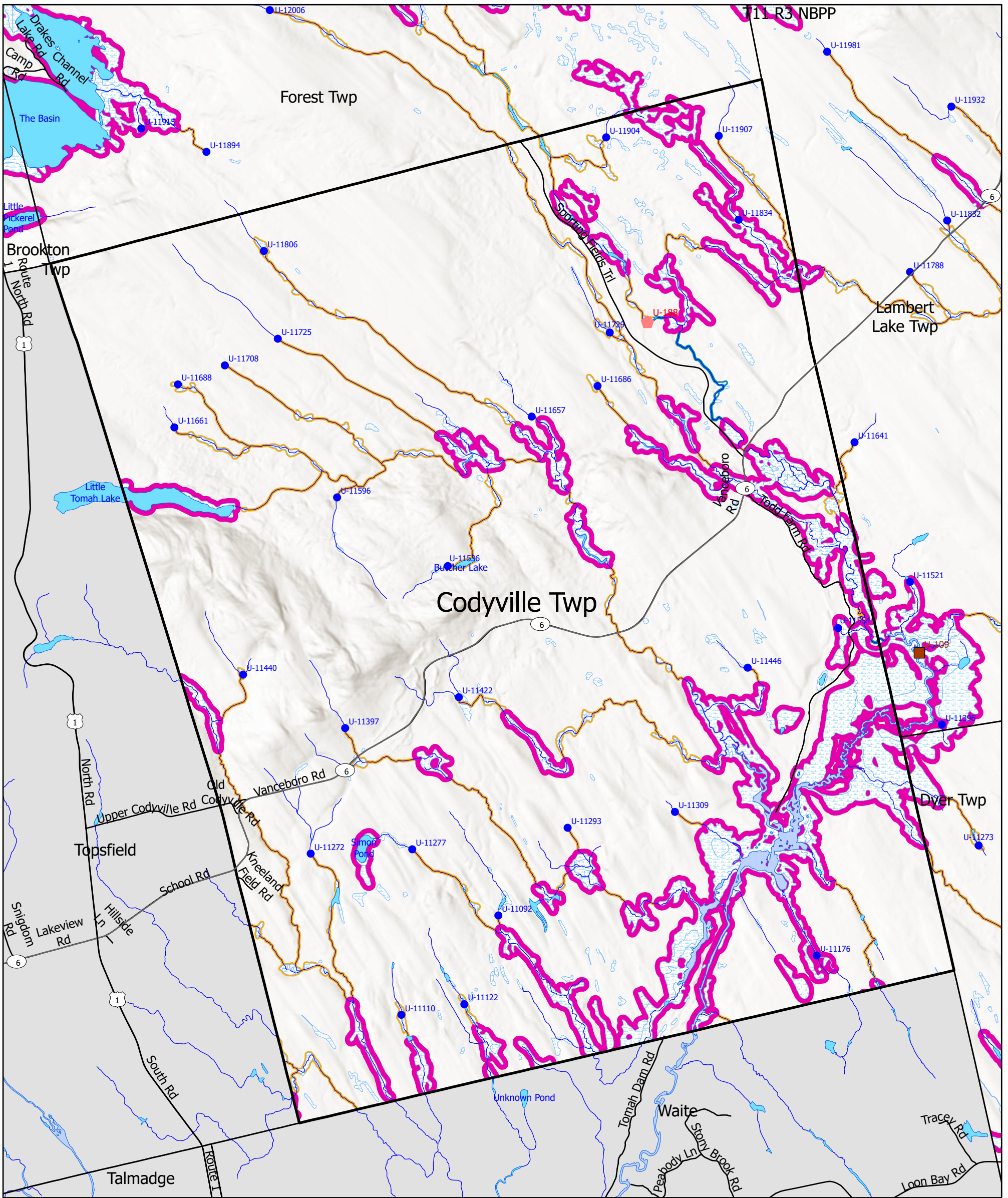


# Statewide Standards for Timber harvesting in the Shoreland Area\* Map



January 2026

## Forest Operation Notification & Shoreland Area \* Map

Adoption Date: 1/2/2026

### Codyville Twp

#### Buffers

- 75 Foot Buffer Zones
  - Adequate shade and shoreline integrity (unorganized)
  - Streams between the 25 square mile drainage point and the 50 square mile drainage point (unorganized)
- 250 Foot Buffer Zones
  - Great Ponds
  - Coastal Wetlands
  - Tidal Waters
  - Nonforested wetlands greater than 10 acres
  - Rivers below the 50 square mile drainage point (unorganized)

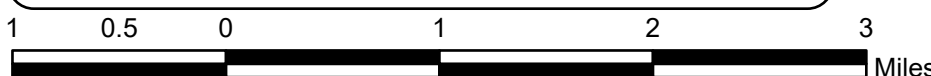
#### Drainage Points

- U-1234 300 Acre Drainage Point  
U12345 - ID Number (Location Info)
- U-56 25 Square Mile Drainage Point  
U67 - ID Number (Location Info)
- U-78 50 Square Mile Drainage Point  
U89- ID Number (Location Info)

SWS data for the organized towns are not displayed on the map.



Department of Agriculture, Conservation and Forestry  
Maine Forest Service  
Forest Policy & Management



**Wetlands**

Non-Forested Wetlands

This map is ADVISORY, for planning purposes only. Actual ground conditions and water body locations determine where and how MFS timber harvesting rules apply. Contact the MFS for additional information/assistance from a MFS Forester.

**Maine Forest Service**

For additional information, please contact the MFS at:  
1-207-287-2791 or 1-800-367-0223 (In-State)

Email us at: [forestinfo@maine.gov](mailto:forestinfo@maine.gov)  
or on the web at: [www.maineforestservice.gov](http://www.maineforestservice.gov)

\* See MFS Rule - Chapter 21 for additional information.