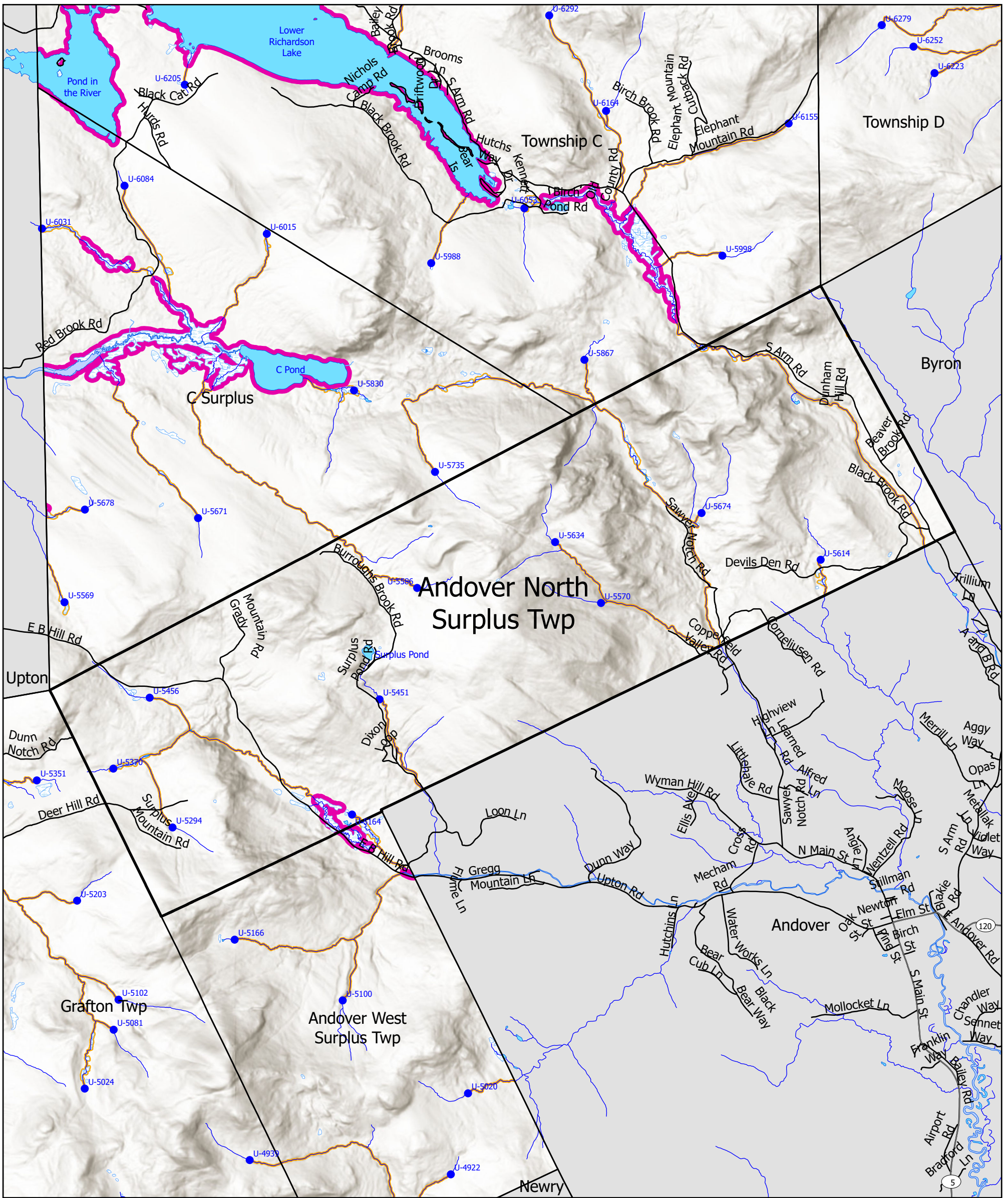


Statewide Standards for Timber harvesting in the Shoreland Area* Map



January 2026

Forest Operation Notification & Shoreland Area * Map Adoption Date: 1/2/2026

Wetlands

Non-Forest Wetlands

This map is ADVISORY, for planning purposes only. Actual ground conditions and water body locations determine where and how MFS timber harvesting rules apply. Contact the MFS for additional information/assistance from a MFS Forester.

Maine Forest Service

For additional information, please contact the MFS at:
1-207-287-2791 or 1-800-367-0223 (In-State)

Email us at: forestinfo@maine.gov
or on the web at: www.maineforestservice.gov

Andover North Surplus Twp

Buffers

- 75 Foot Buffer Zones
Adequate shade and shoreline integrity (unorganized)
- 75 Foot Buffer Zones
Streams between the 25 square mile drainage point and the 50 square mile drainage point (unorganized)
- 250 Foot Buffer Zones
Great Ponds
Coastal Wetlands
Tidal Waters
Nonforested wetlands greater than 10 acres
Rivers below the 50 square mile drainage point (unorganized)

Drainage Points

- U-1234 300 Acre Drainage Point
U12345 - ID Number (Location Info)
- U-56 25 Square Mile Drainage Point
U67 - ID Number (Location Info)
- U-78 50 Square Mile Drainage Point
U89- ID Number (Location Info)

SWS data for the organized towns are not displayed on the map.



Department of Agriculture, Conservation and Forestry
Maine Forest Service
Forest Policy & Management

* See MFS Rule - Chapter 21 for additional information.