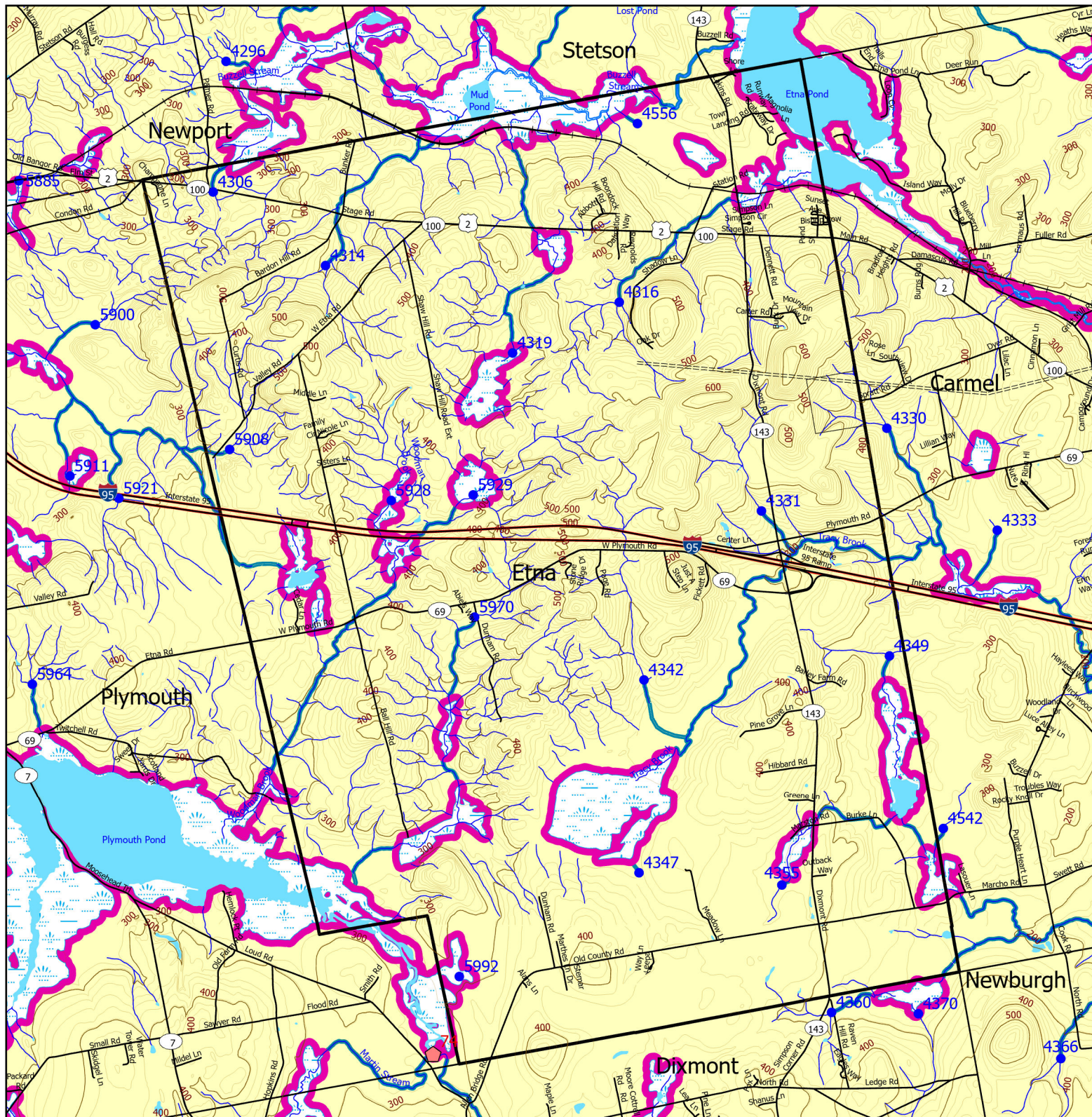


Forest Operation Notification & Shoreland Area* Map



This map is ADVISORY, for planning purposes only. Actual ground conditions and water body locations determine where and how MFS timber harvesting rules apply. Contact the MFS for additional information/assistance from a MFS Forester.

Forest Operation Notification & Shoreland Area* Map Etna

Adoption Date
3/26/2019

Department of Agriculture, Conservation and Forestry
Maine Forest Service

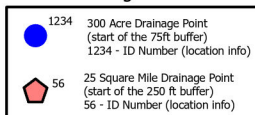
Maine Forest Service

For additional information, please contact the MFS at:
1-207-287-2791 or 1-800-367-0223 (In-State)

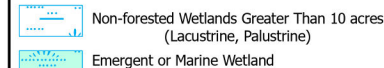
Email us at: forestinfo@maine.gov

or on the web at: www.maineforestservice.gov

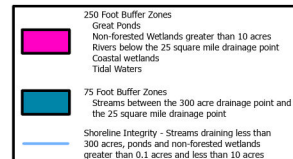
Drainage Points



Wetlands



Buffers



August 2025



SWS Town



FON Town

Statewide Standard Rules do not apply
(Town/DEP Standards apply)



LUPC - Unorganized or
Deorganized Town



Outside Maine