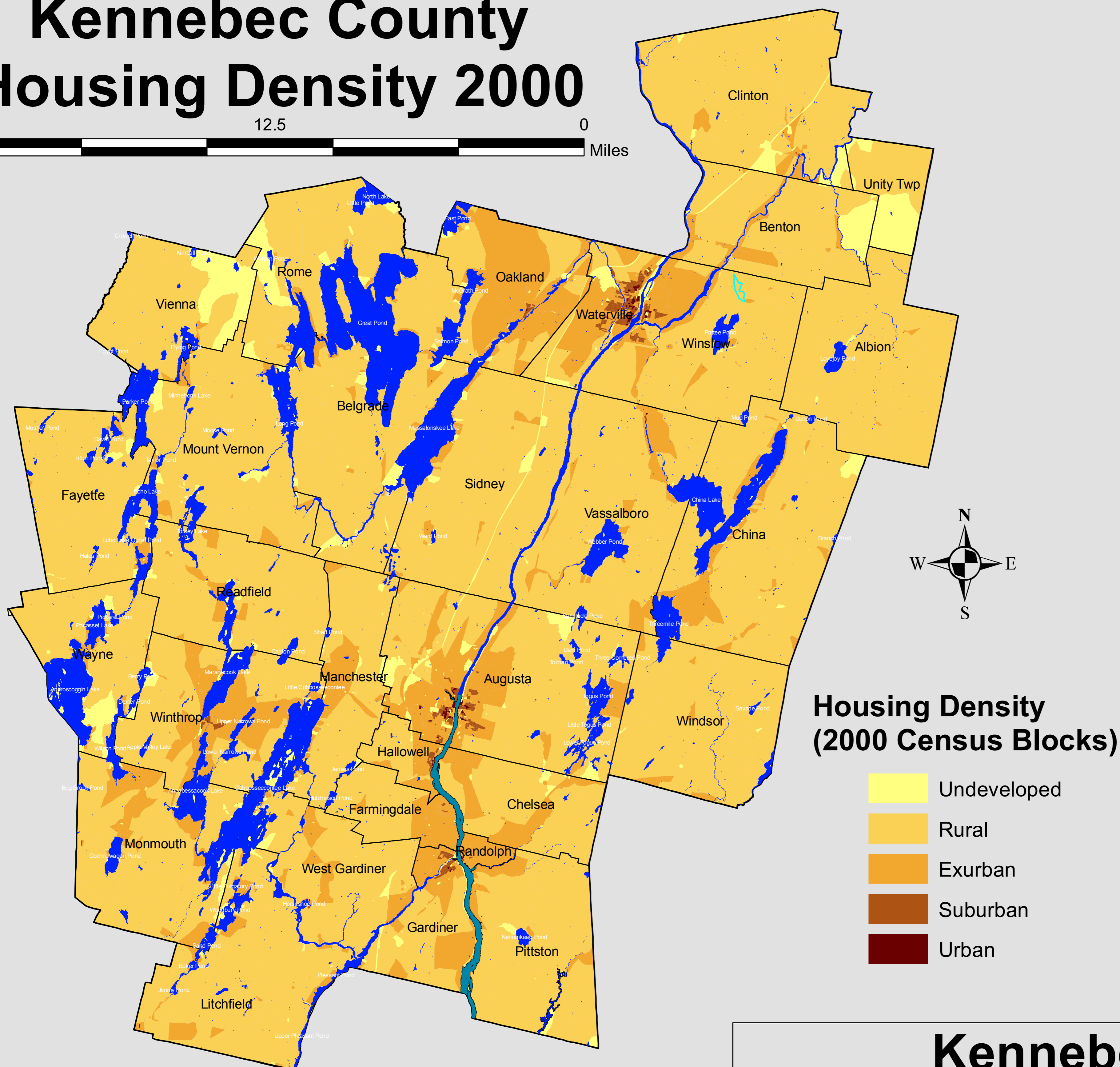
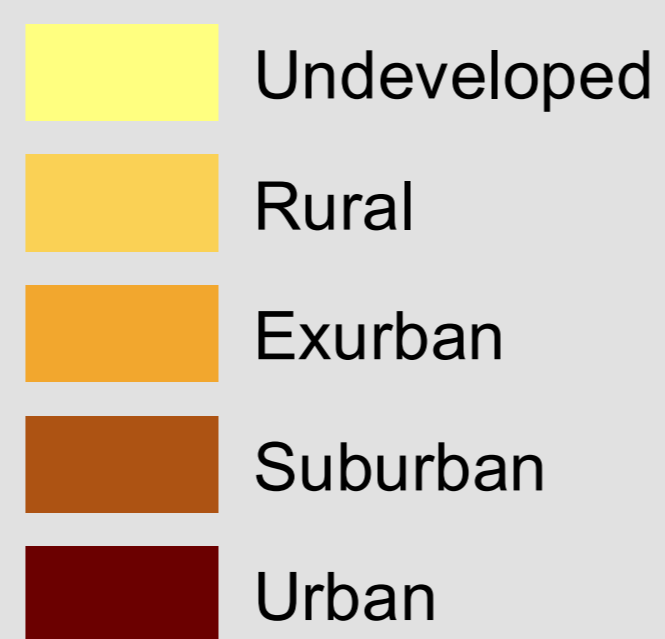


Kennebec County Housing Density 2000

25 12.5 0 Miles



Housing Density (2000 Census Blocks)

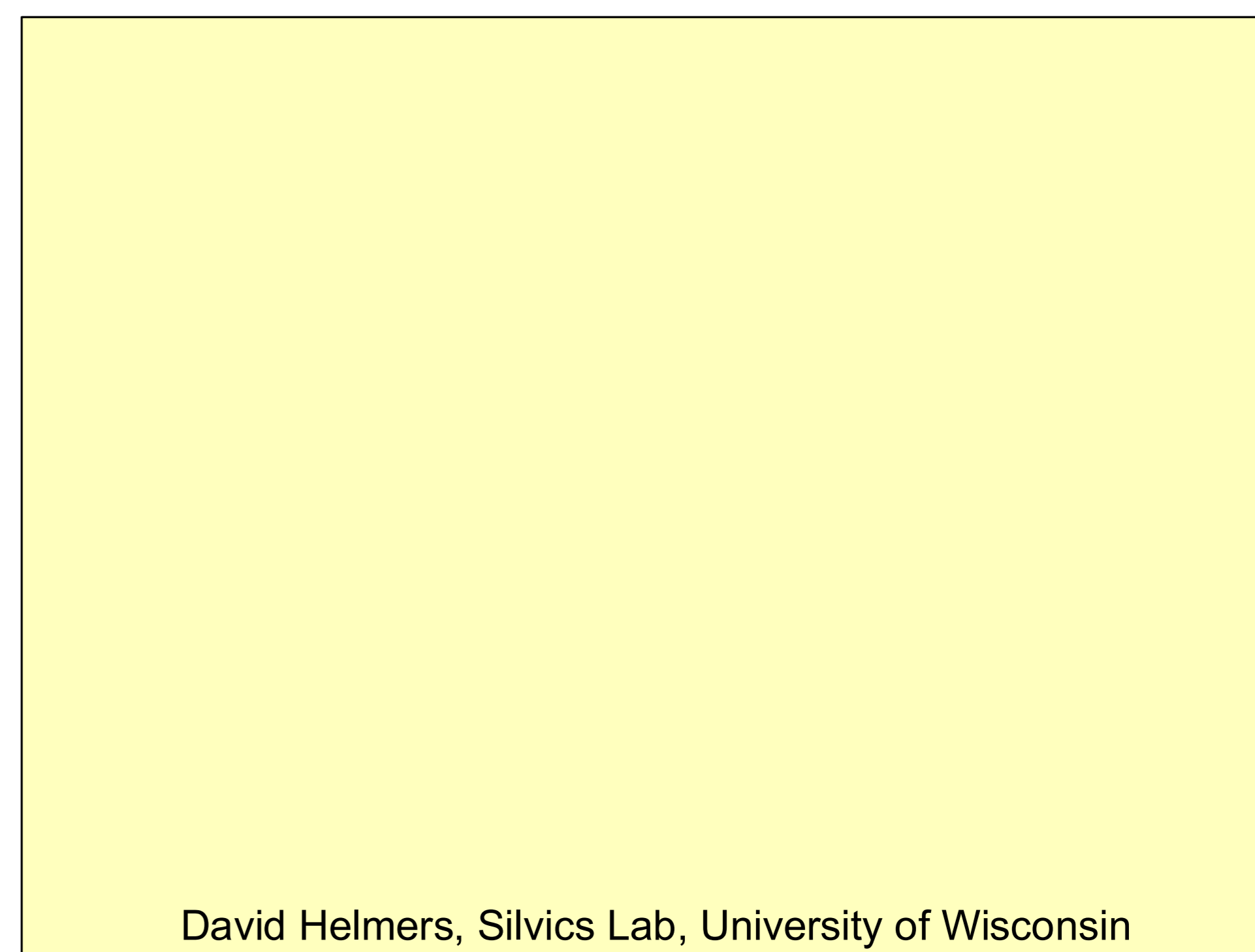


Kennebec County

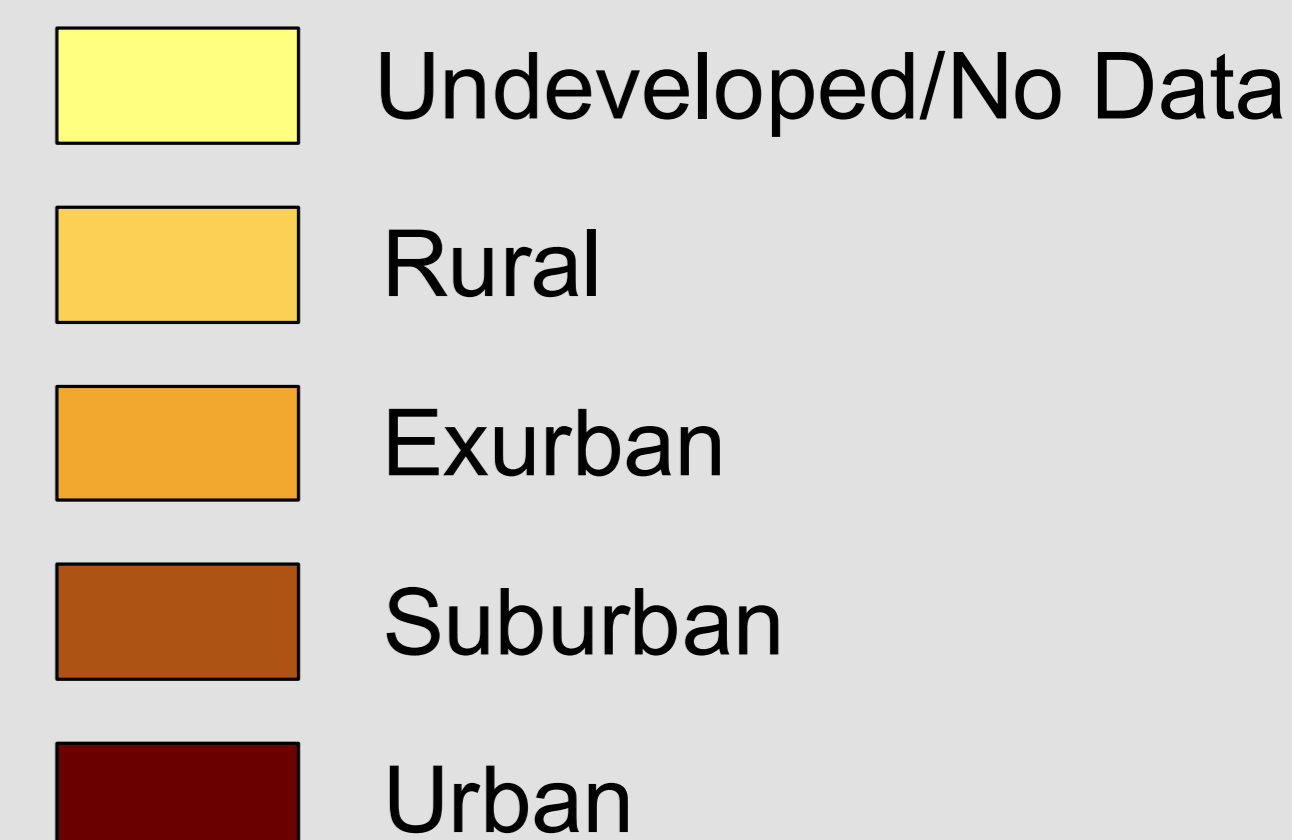
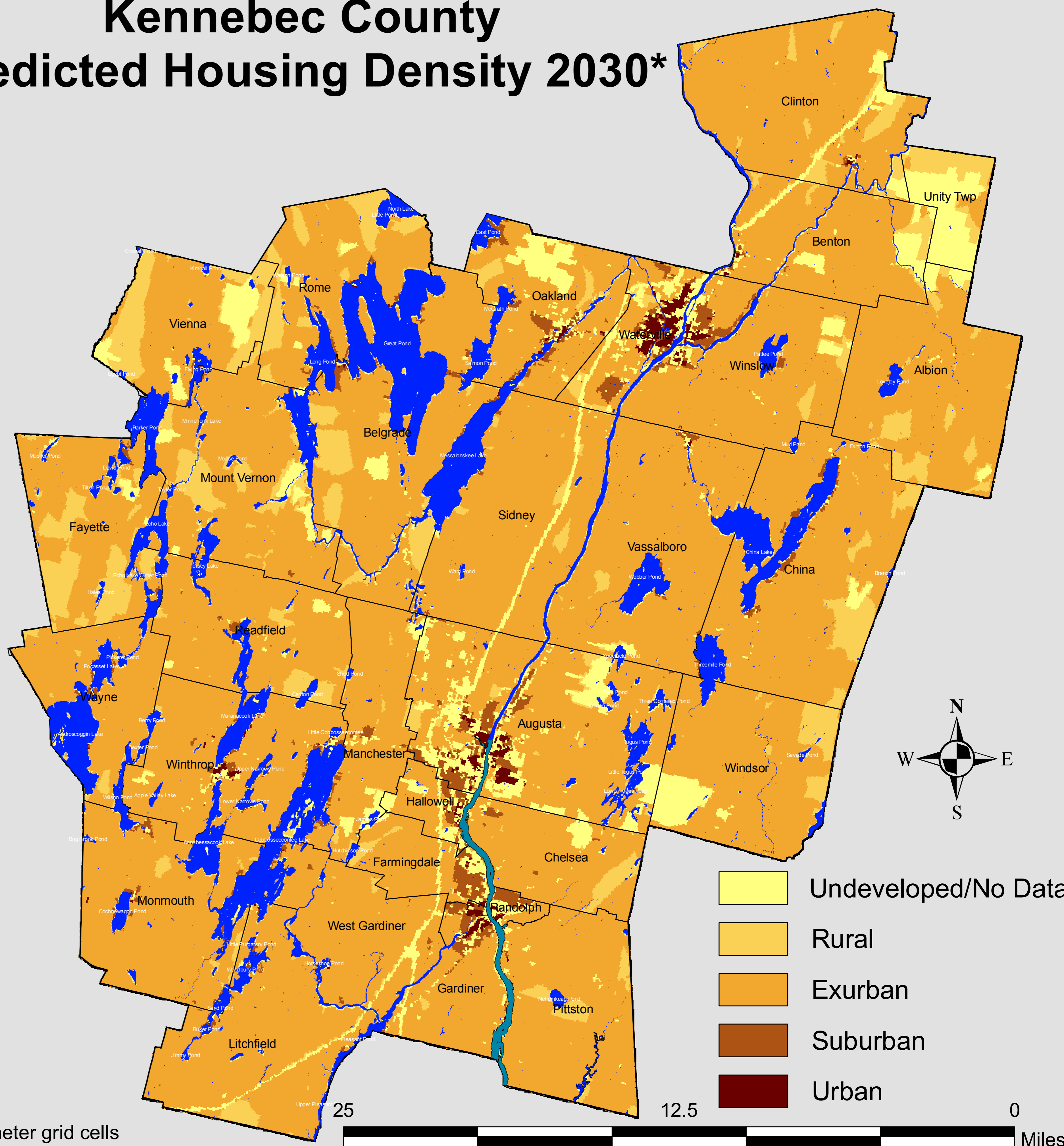
2000 Housing Density, 2030 Predicted Housing Density, & 2050 Population Projection

Based on the Census Bureau's definition of urban and rural areas, Thebold defines the following housing densities classes:

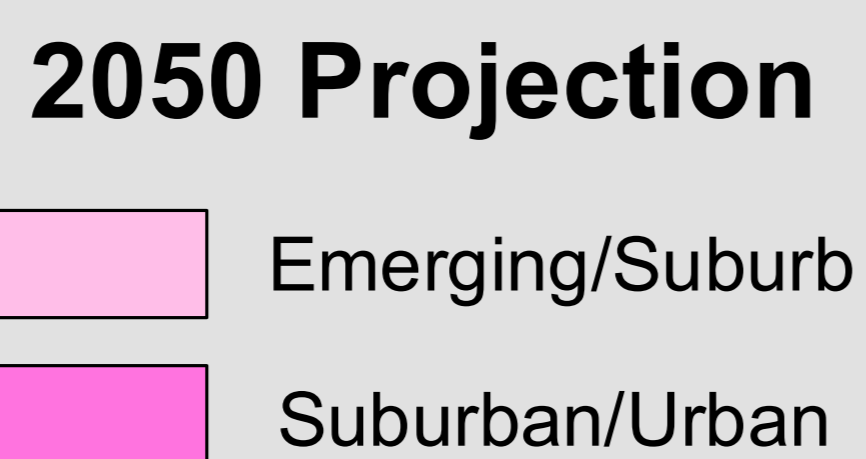
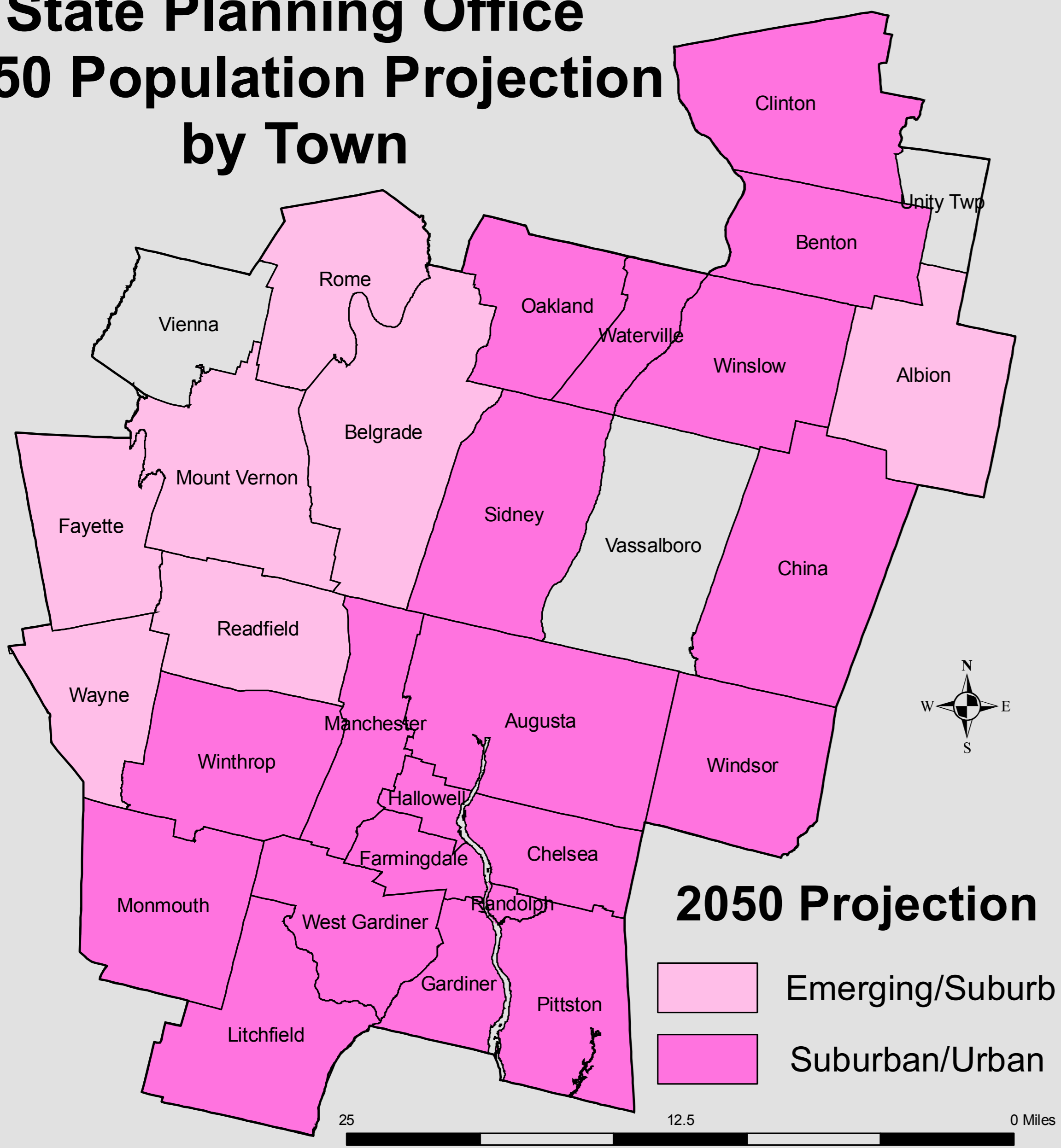
- Urban - <0.6 acres per unit
- Suburban - 0.6 - 1.7 acres per unit
- Exurban - 1.7 - 40 acres per unit
- Rural - > 40 acres per unit
- Undeveloped - 0 acres per unit



Kennebec County Predicted Housing Density 2030*



Kennebec County State Planning Office 2050 Population Projection by Town



Department of Conservation
Maine Forest Service
Forest Policy & Management Div.

October 14, 2010

* Theobald, D. M. 2005, Landscape patterns of exurban growth in the USA from 1980 to 2020. Ecology and Society 10 (1):32.