



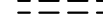



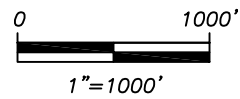


# NATURAL COMMUNITY MAP

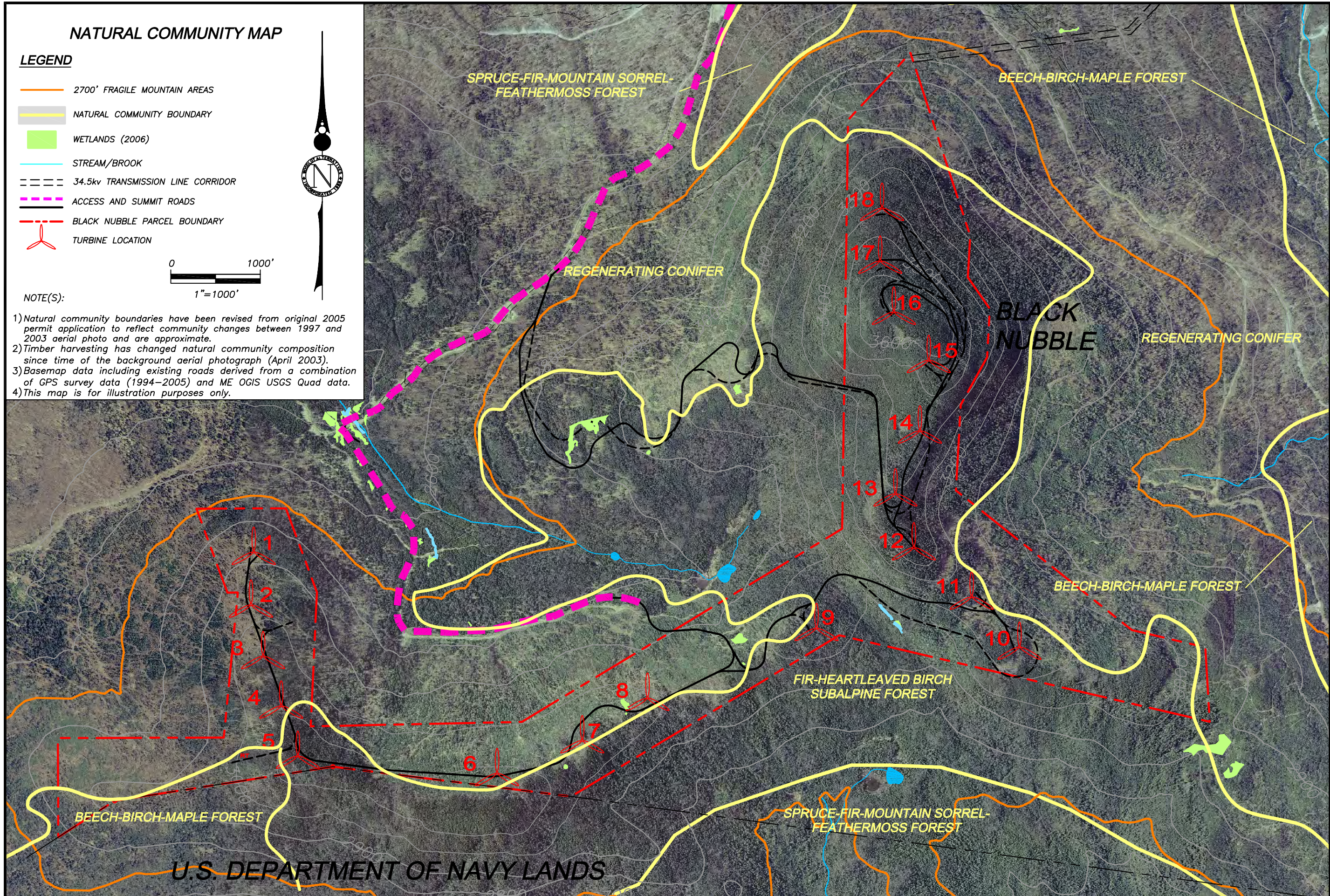
## LEGEND

-  2700' FRAGILE MOUNTAIN AREAS
-  NATURAL COMMUNITY BOUNDARY
-  WETLANDS (2006)
-  STREAM/BROOK
-  34.5kv TRANSMISSION LINE CORRIDOR
-  ACCESS AND SUMMIT ROADS
-  BLACK NUBBLE PARCEL BOUNDARY
-  TURBINE LOCATION



### NOTE(S):

- 1) Natural community boundaries have been revised from original 2005 permit application to reflect community changes between 1997 and 2003 aerial photo and are approximate.
- 2) Timber harvesting has changed natural community composition since time of the background aerial photograph (April 2003).
- 3) Basemap data including existing roads derived from a combination of GPS survey data (1994-2005) and ME OGIS USGS Quad data.
- 4) This map is for illustration purposes only.



NO.	1	REVISED FROM 2005 APPLICATION	06/22/07	DATE
REVISIONS				
BLACK NUBBLE NATURAL COMMUNITY MAP				
SHEET TITLE:				
BLACK NUBBLE WIND FARM				
MAINE MOUNTAIN POWER, LLC				
PROJECT:				
ADDRESS:				
57 RYDER ROAD				
YARMOUTH, MAINE				
SCALE: 1"=1000'				
DATE: JUNE 2007				
PREPARED BY:				
WOODLOT ALTERNATIVES, INC.				
ENVIRONMENTAL CONSULTANTS				
BN-communities.dwg				
PROJ. NO. 102127				
FIGURE NO. 7-4				