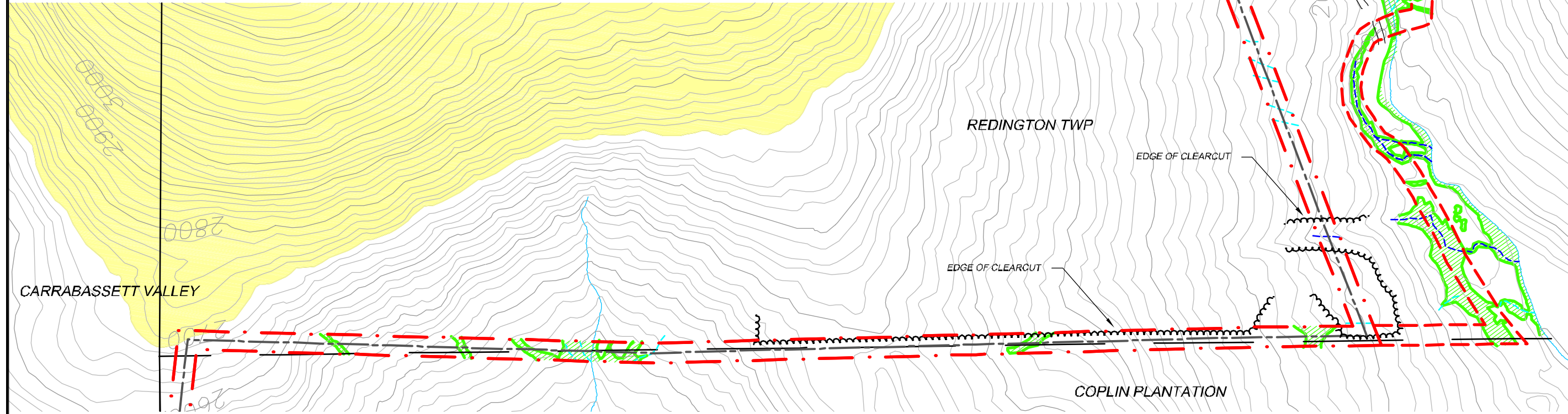
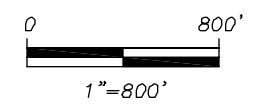


115kv TRANSMISSION CORRIDOR NATURAL COMMUNITY MAP

LEGEND	
	PREFERRED 115kv TRANSMISSION LINE ROUTE
	ALTERNATIVE 115kv TRANSMISSION LINE ROUTE (2000)
	34.5kv TRANSMISSION LINE CORRIDOR
	WETLANDS
	INTERMITTENT STREAM (SOME OF WHICH INCLUDE WETLAND SEEPS)
	PERENNIAL STREAM
	BROOK



- Notes:
- 1) Resource boundaries as illustrated are approximate.
 - 2) All wetlands, regardless of size or type, are regulated by the US Army Corps of Engineers. All wetlands and streams, regardless of size or type, are regulated in organized towns by the Maine Department of Environmental Protection and in unorganized townships by the Maine Land Use Regulation Commission.
 - 3) Basemap data including existing roads derived from a combination of GPS survey data (1994-2005) and ME OGIS USGS Quad data.
 - 4) This map is for illustration purposes only.



SHEET 3 OF 3

SHEET TITLE: 115KV TRANSMISSION CORRIDOR NATURAL COMMUNITY MAP	NO.	DATE
	NO.	DATE
PROJECT: REDINGTON WIND FARM REDINGTON MOUNTAIN WINDPOWER, LLC	SCALE: 1"=800'	DATE: AUGUST 2005
ADDRESS: 57 RIVER ROAD YARMOUTH, MAINE	NO.	DATE
PREPARED BY: WOODLOT ALTERNATIVES, INC. ENVIRONMENTAL CONSULTANTS 115kv-communities.dwg	PROJ. NO. 102127 FIGURE NO.	7-5