

# 2026 Fair Packet

## **Maine Fairs Livestock Superintendents,**

This packet has been made as a reference guide for fair staff and participants. We are hopeful for a successful fair season and look forward to attending the fairs and supporting you all.

Included are some general guidance for:

- Official Animal ID Guide
- Exhibitor Guidelines

Guidance Documents for Specific Species:

- Cattle
- Goats
- Poultry/Waterfowl
- Rabbits
- Sheep
- Swine



Visit the ME DACF Animal Health  
Fair Page  
by scanning the QR code

H5N1 in poultry and cattle continues to be an emerging situation. Biosecurity is the first defense against this disease and many others. ME DACF has webpages that are regularly updated concerning H5N1. Please check our website [www.maine.gov/dacf/animalhealth](http://www.maine.gov/dacf/animalhealth) for updates.

The website also has a special page just for fairs. The orange FAIR button on the homepage will take you to this page. All of the fair packet PDF components can be downloaded from there for convenience.

As a reminder livestock superintendents can request Animal Health staff support by visiting our website or calling (207) 287-3701 and selecting option 7.

If your fair would like to request a specific day for Animal Health staff to be present at the fair please have your request at least 7 business days prior to the requested date of attendance.

Sincerely,

Maine DACF Animal Health Staff

# EVENTS & FAIRS CHECKLIST



## OFFICIAL CERTIFICATE OF VETERINARY INSPECTION (CVI)

- Is a current 2026 season NE CVI with the destination listed on it.
- Is written specifically for the event and is dated within the past 30 days and appears to be unaltered.
- All animal ID listed on the CVI matches the animal ID on the animals present.
- Out-of-state lactating dairy cattle need HPAI testing within 7 days of travel into Maine per the Federal Order.
- Remember, Maine animals traveling in state do not need a CVI!

## SIGNS OF POOR ANIMAL HEALTH

- Must show no evidence of disease: diarrhea, runny nose, cough etc.
- No recent castration evidence.
- No hair loss, including "healing" ringworm lesions, lice, or mange.
- No scabs, crusts, pimples, blisters or open skin.
- No pink eye or eye injuries.
- No open/draining wounds/abscesses.
- No retained placentas.
- No signs of neurological impairment
- No signs of lameness or pain (teeth grinding/hunched posture/dull/head pressing).

## ANIMAL IDENTIFICATION

- All livestock of any age must have USDA official ID.
- The tag is properly secured in the ear.
- The tag has a US shield on it.
- Microchip numbers must start 840.
- Microchips must be implanted.  
Goats may be tattooed with matching breed registration papers instead of having scrapie ear tags.  
Sheep must be identified with appropriate scrapie tags.
- Farm tags are NOT official ID.

## ANIMAL CONDITION

- Body condition score should be within the healthy range for the species.
- Cattle, Sheep, Goats, Camelids & Pigs: ideal BCS range is 3-4 of 5.
- Horses: minimum BCS 2 of 5 or 4 of 9






## RECOMMENDED VACCINES

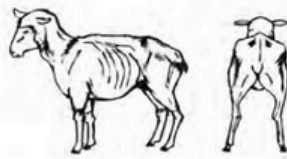
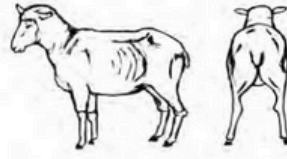
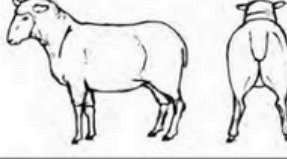
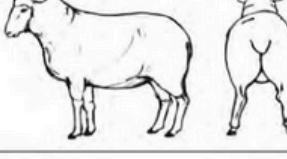
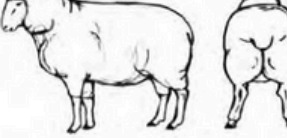
- Rabies for susceptible mammals.
- Appropriate respiratory vaccines.
- Appropriate tetanus/clostridial vaccines.

# SIGNS OF DISEASE REFERENCE

**BASIC BODY CONDITION SCORING-  
SHEEP/GOATS/CAMELIDS**

**How to Condition Score**

<p>Score 1</p> 	<p>The vertical and horizontal processes are prominent and sharp. The fingers can be pushed easily below the transverse and each process can be felt. The loin is thin with no fat cover.</p>
<p>Score 2</p> 	<p>The vertical processes are prominent but smooth; individual processes being felt only as corrugations. The horizontal processes are smooth and rounded, but it is still possible to press fingers under. The loin muscle is a moderate depth but with little fat cover.</p>
<p>Score 3</p> 	<p>The vertical processes are smooth and rounded; the bone is only felt with pressure. The horizontal processes are also smooth and well covered; hard pressure is required with the fingers to find the ends. The loin muscle is full and with a moderate fat cover.</p>
<p>Score 4</p> 	<p>The vertical processes are only detectable as a line. The ends of the horizontal processes cannot be felt. The loin muscles are full and rounded, and have a thick covering of fat.</p>
<p>Score 5</p> 	<p>The vertical and transverse processes cannot be detected even with pressure; there is a dimple in the fat layers where the processes should be. The loin muscles are very full and covered with very thick fat.</p>

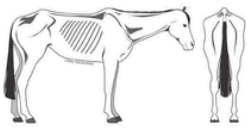
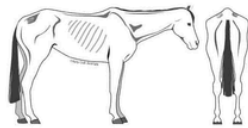
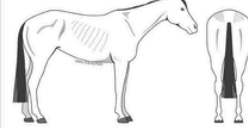
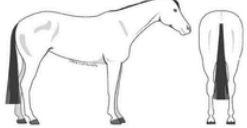
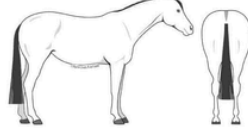
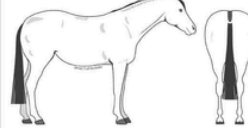
	<p><b>Condition score 1</b> Appearance angular and narrow Backbone raised and sharp Hollow behind ribs Tail feels bony Neck bones prominent</p>
	<p><b>Condition score 2</b> Backbone raised but smooth Ribs are easily felt Tail bone easily detectable Thin neck</p>
	<p><b>Condition score 3</b> Backbone slightly raised Ribs smooth, can just be felt Tail bones barely detectable</p>
	<p><b>Condition score 4</b> Appearance well rounded Backbone can just be felt Ribs are covered Tail firm and rounded</p>
	<p><b>Condition score 5</b> Appearance very well rounded Backbone barely detectable Ribs cannot be felt Tail fat and broad</p>

# MAINE ANIMAL HEALTH REFERENCE








## BASIC BODY CONDITION SCORING EQUINE

### BODY CONDITION SCORE SIX POINT SCALE 0 TO 5

<p><b>0. VERY POOR</b></p>  <ul style="list-style-type: none"> <li>• Very sunken rump</li> <li>• Deep cavity under tail</li> <li>• Skin tight over bones</li> <li>• Very prominent backbone and pelvis</li> <li>• Marked U shaped neck</li> </ul>	<p><b>1. POOR</b></p>  <ul style="list-style-type: none"> <li>• Sunken rump</li> <li>• Cavity under tail</li> <li>• Ribs easily visible</li> <li>• Prominent backbone and croup</li> <li>• U shaped neck – narrow and slack</li> </ul>	<p><b>2. MODERATE</b></p>  <ul style="list-style-type: none"> <li>• Flat rump either side of backbone</li> <li>• Ribs just visible</li> <li>• Narrow but firm neck</li> <li>• Backbone well covered</li> </ul>
<p><b>3. GOOD</b></p>  <ul style="list-style-type: none"> <li>• Rounded rump</li> <li>• Ribs just covered but easily felt</li> <li>• No crest, firm neck</li> </ul>	<p><b>4. FAT</b></p>  <ul style="list-style-type: none"> <li>• Rump well rounded</li> <li>• Gutter along back</li> <li>• Ribs and pelvis hard to feel</li> <li>• Slight crest</li> </ul>	<p><b>5. VERY FAT</b></p>  <ul style="list-style-type: none"> <li>• Very bulging rump</li> <li>• Deep gutter along back</li> <li>• Ribs buried</li> <li>• Marked crest</li> <li>• Folds and lumps of fat</li> </ul>

## BASIC BODY CONDITION SCORING: PIGS

				
<p><b>Condition score 1:</b></p> <p>The sow is visually thin, with hips and backbone very prominent and no fat cover over hips and backbone.</p>	<p><b>Condition score 2:</b></p> <p>The hip bones and backbone are easily felt without any pressure on the palms.</p>	<p><b>Condition score 3:</b></p> <p>It takes firm pressure with the palm to feel the hip bones and backbone.</p>	<p><b>Condition score 4:</b></p> <p>It is impossible to feel the bones at all even with pressure on the palm of the hands.</p>	<p><b>Condition score 5:</b></p> <p>The sow is carrying so much fat that it is impossible to feel the hip bones and backbone even by pushing down with a single finger.</p>



# MAINE ANIMAL HEALTH REFERENCE



## BASIC BODY CONDITION SCORING: BEEF CATTLE

## BASIC BODY CONDITION SCORING: DAIRY CATTLE

<p><b>Condition score 1</b>          Backbone prominent          Hips and shoulder bones prominent          Ribs clearly visible          Tail-head area recessed          Skeletal body outline</p>	
<p><b>Condition score 2</b>          Backbone visible          Hips and shoulder bones visible          Ribs visible faintly          Tail-head area slightly recessed          Body outline bony</p>	
<p><b>Condition score 3</b>          Hip bones visible faintly          Ribs generally not visible          Tail-head area not recessed          Body outline almost smooth</p>	
<p><b>Condition score 4</b>          Hip bones not visible          Ribs well covered          Tail-head area slightly lumpy          Body outline rounded</p>	
<p><b>Condition score 5</b>          Hip bones showing fat deposit          Ribs very well covered          Tail-head area very lumpy          Body outline bulging due to fat</p>	

1 - Emaciated	The individual vertebrae of the spine are prominent. The short ribs are sharp to the touch and give a shelf-like appearance to the loin. The hook and pin bones of the pelvis are well defined. The anal area of the cow is recessed displaying a prominent vulva. Considered unfit to travel.
2 - Thin	The short ribs can be felt but are less outstanding. The hook and pin bones are still well-defined, though the area around the anus is less sunken and the vulva is prominent.
3 - Average	The short ribs are palpable with slight pressure. There is no shelf-like appearance to this area. The spine and hook and pin bones are all rounded and smoothed over. The anal area is filled out, and there is no evidence of fat deposits.
4 - Heavy	The short ribs are rounded over with no evidence of a shelf-like appearance and may only be felt with firm palpation. The ridge of the backbone is flattened over the loin and rump areas. The hook bones are smoothed over and the area around the pin bones shows some fat deposits.
5 - Fat	The bone structures of the spine, hook and pin bones, and short ribs are not discernible. There are fat deposits around the tailhead and over ribs. The thighs curve out and the brisket and flanks appear to be very full and heavy.

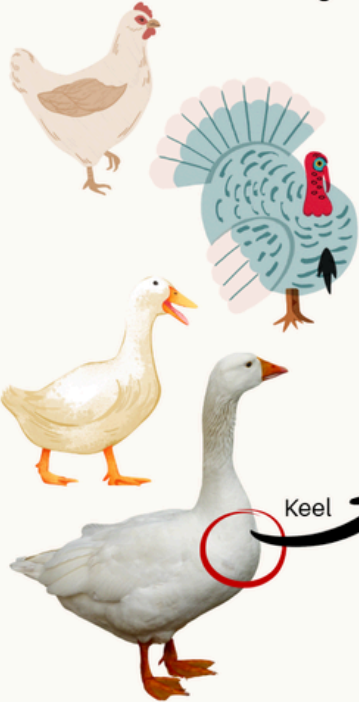
Body Condition Score	Vertebrae at the middle of the back	Rear view (cross-section) of the hook bones	Side view of the line between the hook and pinbones	Cavity between tailhead and pinbone	
				Rear view	Angled view
1 Severe underconditioning					
2 Frame obvious					
3 Frame and covering well balanced					
4 Frame not as visible as covering					
5 Severe overconditioning					

BASIC BODY CONDITION  
SCORING: POULTRY

## Poultry Body Condition Score



Maine Animal Health Program

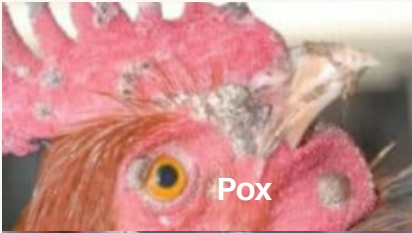


	<b>1</b> EMACIATED	Keel is prominent with a concave appearance on either side. Muscle cover is minimal with trace fat cover.
	<b>2</b> UNDERCONDITIONED	Keel is evident with a concave appearance on either side. Muscle cover is detectable with little fat cover.
	<b>3</b> WELL CONDITIONED	Keel has trace prominences with smooth transition side to side with slightly convex appearance due to adequate muscling and fat cover.
	<b>4</b> OVERCONDITIONED	Keel has no prominences with smooth transition side to side with convex appearance due to adequate muscling and ample fat cover.
	<b>5</b> OBESE	Keel has no prominences sitting recessed within the layers of muscling and excess fat cover.

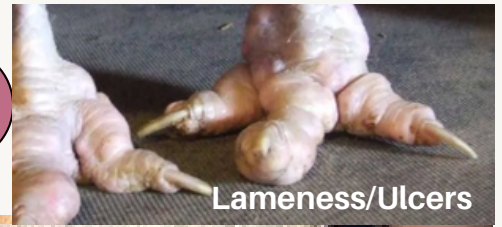


# MAINE ANIMAL HEALTH REFERENCE

SHALL NOT PASS LESIONS



Pox



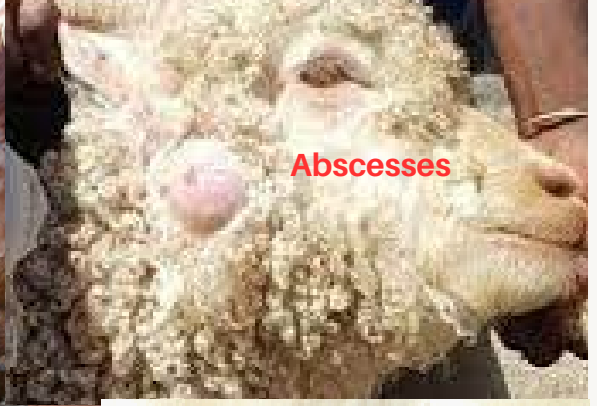
Lameness/Ulcers



ORF



Evidence of Mange/Lice



Abscesses



Fever/Vesicles/Blisters



Ring Worm



Active open wounds  
including castration  
sites



Warts/Hoof Rot



Respiratory Disease  
Cloudy Runny Noses/Excessive  
Coughing



Eye  
Infection/Ulcers/injuries  
/blindness



Warts



Mastitis/udder Injury



Diarrhea