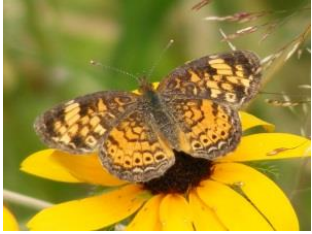


Checkerspots & Crescents

- Harris's Checkerspot
- Pearl Crescent ↓



Chlosyne harrisii
Phyciodes tharos

Crescents fly from May to October. Especially common on dirt roads. Pearl and Northern hard to differentiate.

- Northern Pearl Crescent
- Eastern Comma
- Mourning Cloak
- Red Admiral
- American Lady ↓



Phyciodes cocyta
Polygonia comma
Nymphalis antiopa
Vanessa atalanta
Vanessa virginiensis

American Lady found on dirt roads and open patches in fields. Flight period is April to October.

- White Admiral
- Viceroy
-
-

Limenitis arthemis
Limenitis archippus

Satyrs

- Northern Pearly-Eye
- Eyed Brown ↓



Enodia anthedon
Satyroides eurydice

Eyed Brown found in wet, wooded edges. Has erratic flight pattern. Flies from late June to early August.

- Little Wood Satyr
-

Megisto cymela

- Inornate Ringlet ↓



Coenonympha tullia

The Ringlet has a bouncy, irregular flight pattern. Abundant in open fields from late May to early October.

- Common Wood Nymph ↓



Cercyonis pegala

The Common Wood Nymph is very abundant. Flies from July to Sept. along wood edges and fields.

-
-
-



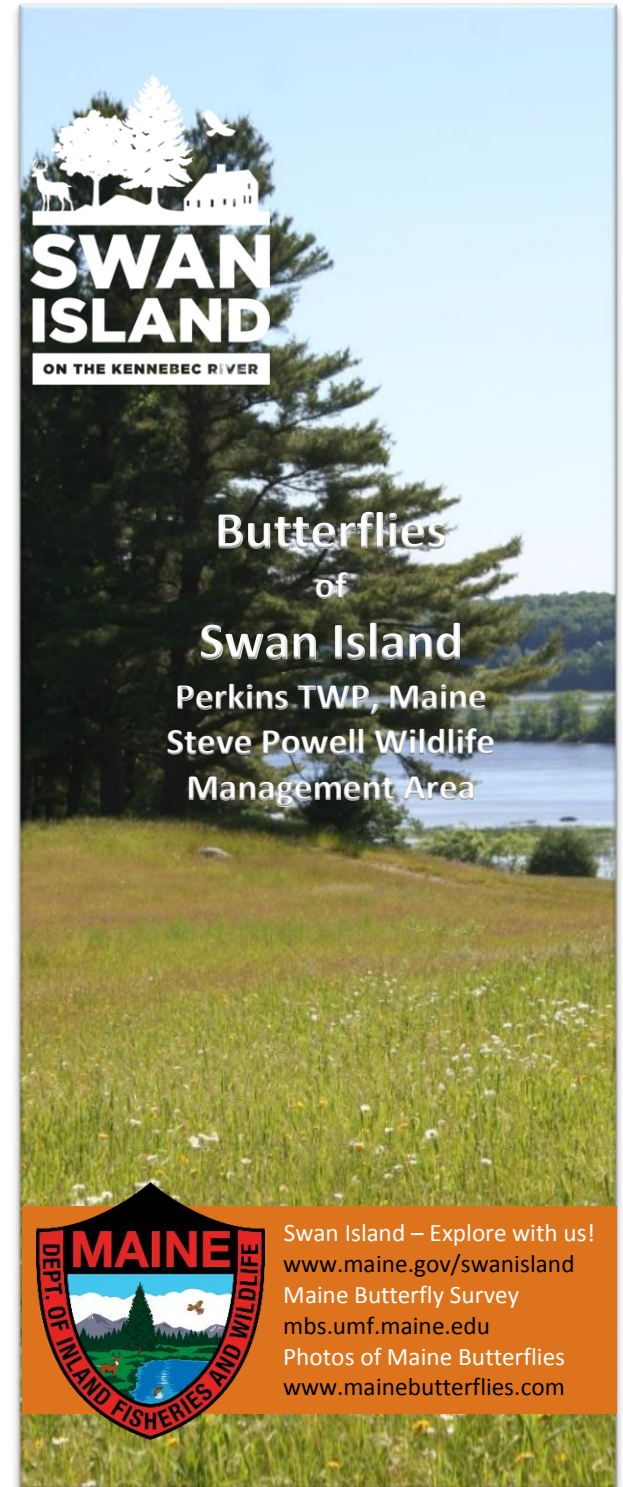
Great Spangled Fritillary



Checklist and brochure created by Robert E. Gobeil and Rose Marie F. Gobeil in cooperation with the Maine Department of Inland Fisheries and Wildlife (MDIFW).

Photos by Rose Marie F. Gobeil

SECOND PRINTING: APRIL 2019



Skippers

- Silver-spotted Skipper ↓ *Epargyreus clarus*



Silver-spotted Skipper is large with bright white spot on wings. Flight period from May to August.

- Northern Cloudywing *Thorybes pylades*
 Least Skipper *Ancyloxypha numitor*
 European Skipper ↓ *Thymelicus lineola*



European Skipper: abundant species. Hundreds can be seen in late June and early July in open meadows.

- Indian Skipper *Hesperia sassacus*
 Peck's Skipper ↓ *Polites peckius*



Peck's Skipper is small with bright yellow on wings. Seen in meadows. Flies from late May to early October.

- Tawny-edged Skipper *Polites themistocles*
 Long Dash Skipper *Polites mystic*
 Northern Broken Dash *Wallengrenia egeremet*
 Hobomok Skipper *Poanes hobomok*
 Dun Skipper ↓ *Euphyes vestris*



The Dun Skipper is small, dark brown in color with rapid flight. Open fields. Flies from late June to early Sept.

- Pepper & Salt Skipper *Amblyscirtes hegon*

Swallowtails

- Black Swallowtail *Papilio polyxenes*
 Canadian Tiger Swallowtail ↓ *Papilio canadensis*



Canadian Tiger Swallowtail: large, bright yellow with black stripes. Flight period is May to early August.

-
-

Sulphurs

- Cabbage White *Pieris rapae*
 Clouded Sulphur ↓ *Colias philodice*



Clouded Sulphur is bright yellow. Commonly seen flying in meadows. Flight period is May to early Nov.

- Alfalfa Butterfly *Colias eurytheme*
-

Coppers, Hairstreaks & Blues

- American Copper *Lycaena phlaeas*
 Bronze Copper ↓ *Lycaena hyllus*



Bronze Copper is an uncommon species found in wet meadows. Flies from mid-June to early Oct.

- Eastern Pine Elfin *Callophrys niphon*
-

- Banded Hairstreak ↓



Satyrium calanus

Banded Hairstreak: uncommon, found in open glades in wooded areas. Flies from late June to early Sept.

- Eastern Tailed Blue ↓



Cupido comyntas

The Eastern Tailed Blue is small and blue in color. Flies low to ground in fields. Flight period mid-May to Oct.

- Cherry Gall Azure
 Silvery Blue

Celastrina seritona

Glaucopsyche lygdamus

Monarch

- Monarch ↓



Danaus plexippus

The Monarch is associated with milkweed plants. Common in late summer and fall during migration.

Fritillaries

- Great Spangled Fritillary *Speyeria cybele*
 Aphoodite Fritillary *Speyeria aphrodite*
 Silver-bordered Fritillary ↓ *Boloria selene*



Silver-bordered Fritillary: medium size, bright orange in color. Flies from mid-May to late September.

- Meadow Fritillary *Boloria bellona*