
 1/2 k square intersecting a known prehistoric archaeological site.

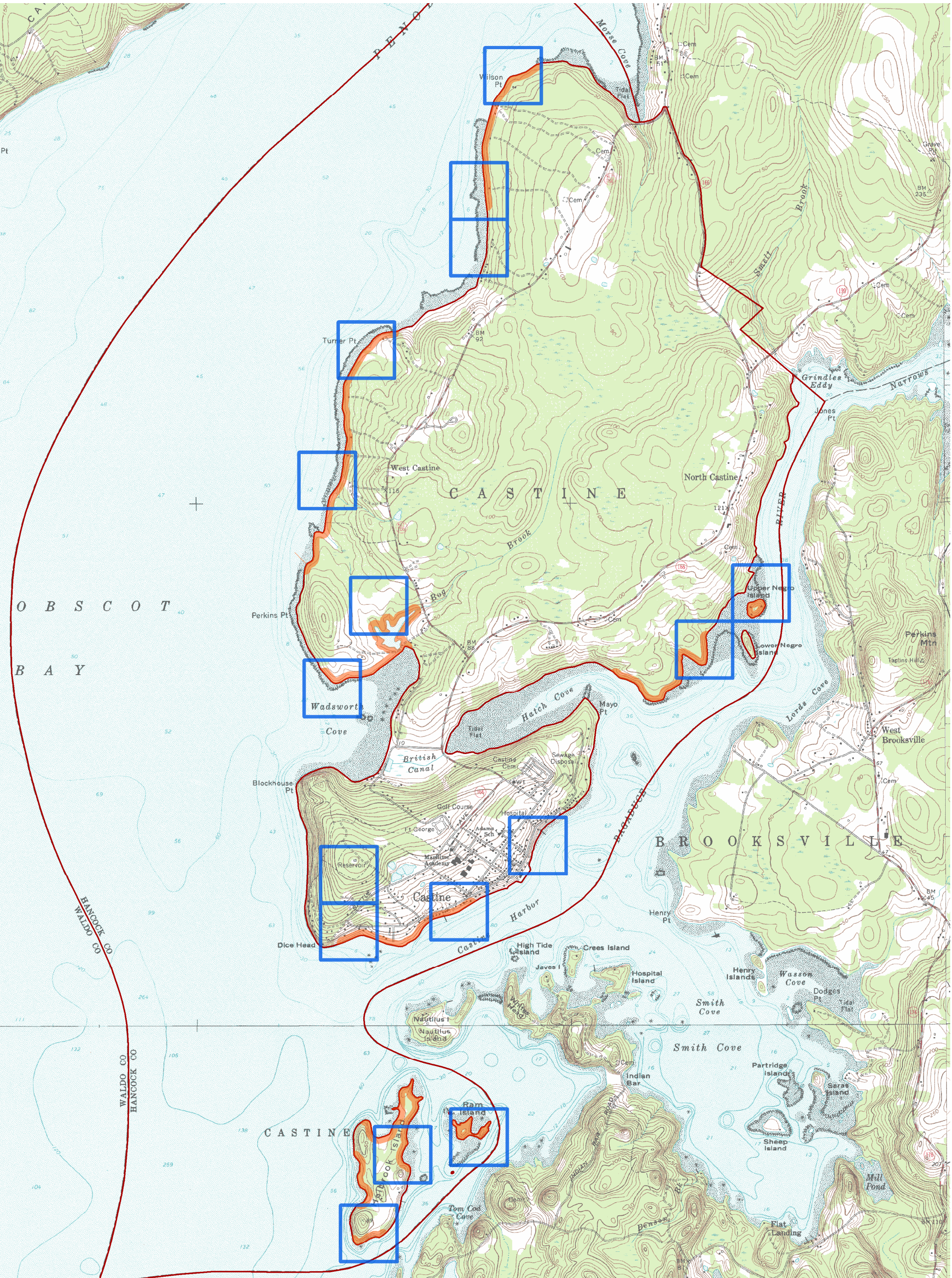
 Areas sensitive for prehistoric archaeology

**Known Prehistoric Archaeological Sites\* and  
Areas Sensitive for Prehistoric Archaeology\* in**

**Castine**

**information provided by  
Maine Historic Preservation Commission  
April 2008**

\*dated material subject to future revision  
map 1/2



0 0.5 1 2 3 4 Kilometers