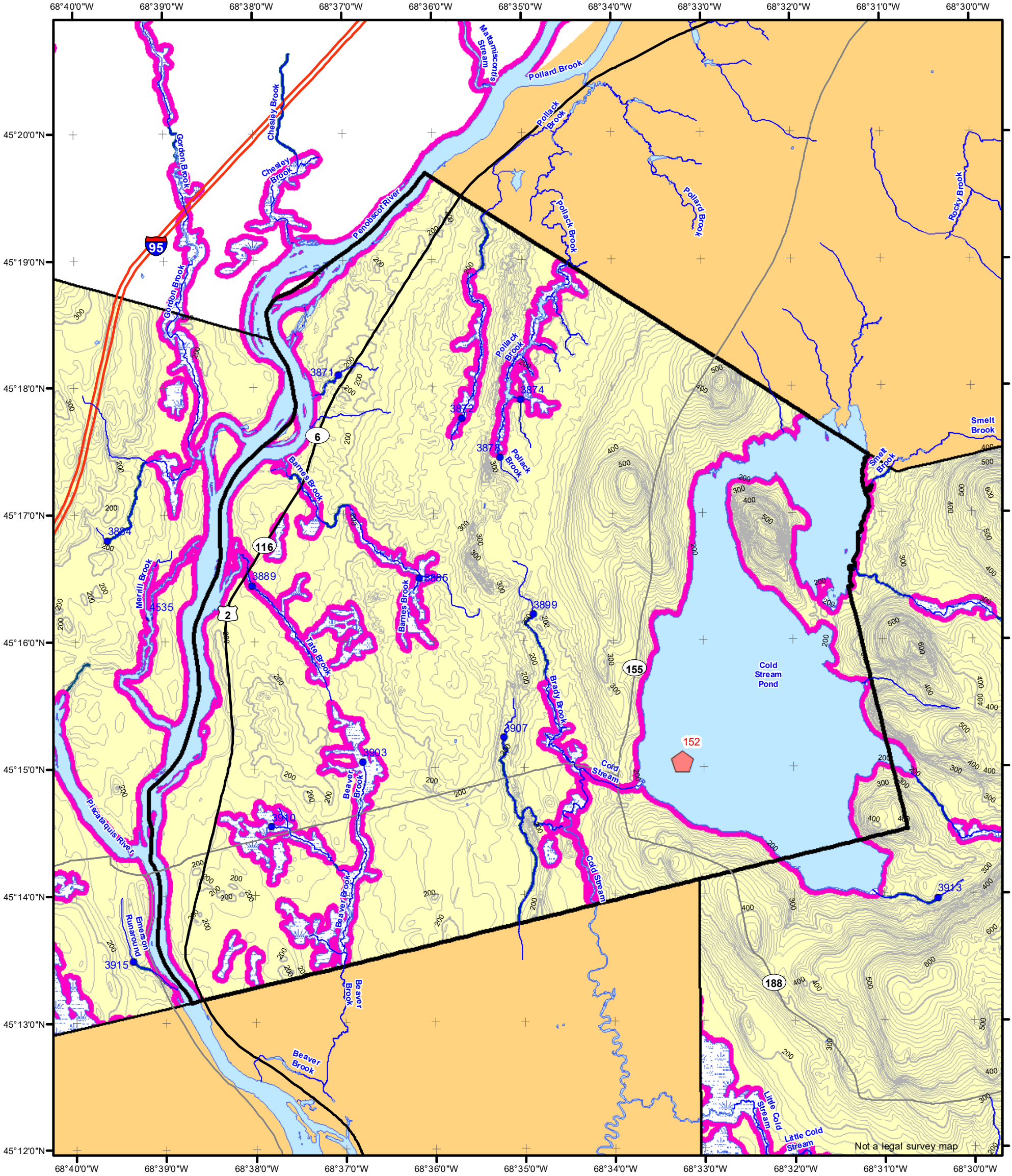


# Statewide Standards for Timber Harvesting in the Shoreland Area\* Map



**This map is ADVISORY, for planning purposes only. Actual ground conditions and water body locations determine where and how MFS timber harvesting rules apply. Contact the MFS for additional information/assistance from a MFS Forester.**

## Forest Operation Notification & Shoreland Area\* Map

# Enfield

Adoption Date  
7/6/2010

LO Last Name \_\_\_\_\_  
 LO First Name \_\_\_\_\_  
 Prepared By \_\_\_\_\_  
 FONS # \_\_\_\_\_  
 Date \_\_\_\_\_

**Wetlands**

	Non-forested Wetlands Greater Than 10 acres (Lacustrine, Palustrine)
	Emergent or Marine Wetland

Department of Agriculture, Conservation and Forestry  
Maine Forest Service

**Maine Forest Service**

For additional information, please contact the MFS at:  
1-207-287-2791 or 1-800-367-0223 (in-State)

Email us at: [forestinfo@maine.gov](mailto:forestinfo@maine.gov)  
 or on the web at: [www.maineforestservice.gov](http://www.maineforestservice.gov)

**Drainage Points**

	1234 300 Acre Drainage Point (start of the 75 ft buffer) 1234 - ID Number (location info)
	56 25 Square Mile Drainage Point (start of the 250 ft buffer) 56 ID Number (location info)

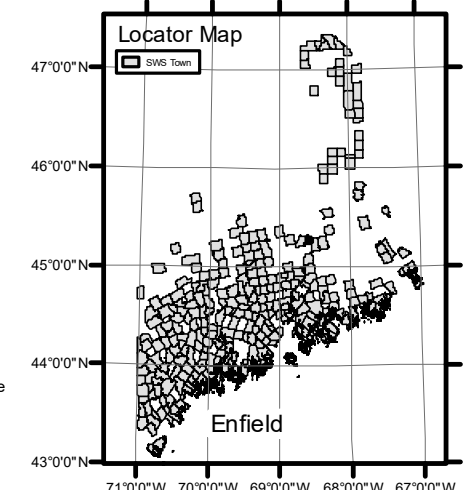
**Habitat**

	FON Town Statewide Standard Rules do not apply (Town/DEP Standards apply)
	LUPC - Unorganized or Deorganized Town
	Outside Maine

**Buffers**

	250 Foot Buffer Zones Great Ponds Non-forested Wetlands greater than 10 acres Rivers below the 25 square mile drainage point Coastal Wetlands Tidal Waters Essential Wildlife Habitat (Least Tern, Roseate Tern, Piping Plover)
	75 Foot Buffer Zones - Streams between the 300 acre drainage point and the 25 square mile drainage point
	Shoreline Integrity - Streams draining less than 300 acres, ponds and Non-forested Wetlands greater than 0.1 acres and less than 10 acres

Shoreline Integrity also applies to UNMAPPED streams & wetlands.



\*See MFS Rule - Chapter 21 for additional information.

