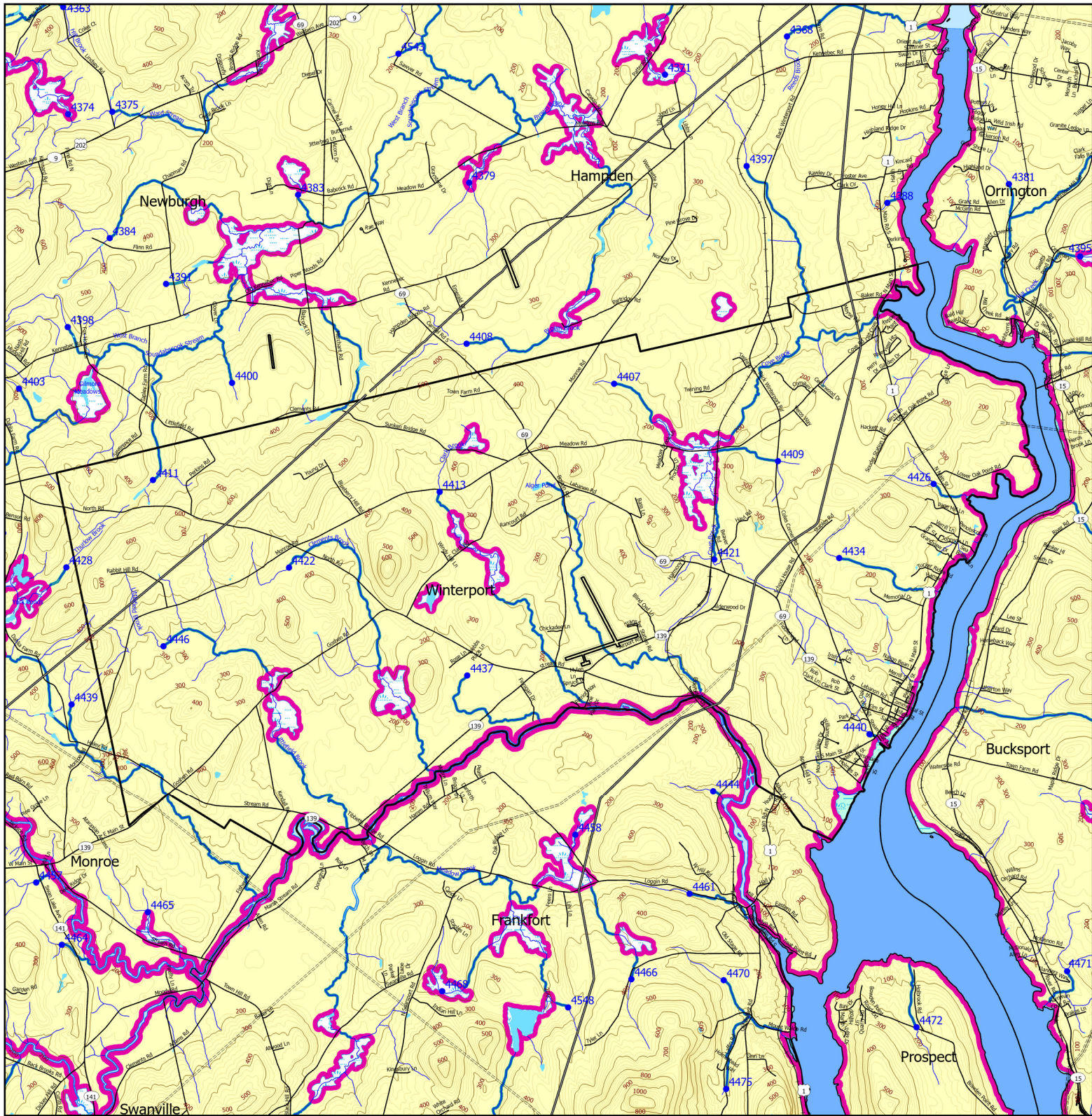


Forest Operation Notification & Shoreland Area* Map



This map is **ADVISORY**, for planning purposes only. Actual ground conditions and water body locations determine where and how MFS timber harvesting rules apply. Contact the MFS for additional information/assistance from a MFS Forester.

Forest Operation Notification & Shoreland Area* Map Winter

Adoption Date
10/29/2009

Department of Agriculture, Conservation and Forestry
Maine Forest Service

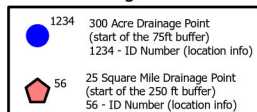
Maine Forest Service

For additional information, please contact the MFS at:
1-207-287-2791 or 1-800-367-0223 (in-State)

Email us at: forestinfo@maine.gov

or on the web at: www.maineforestservice.gov

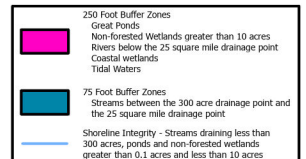
Drainage Points



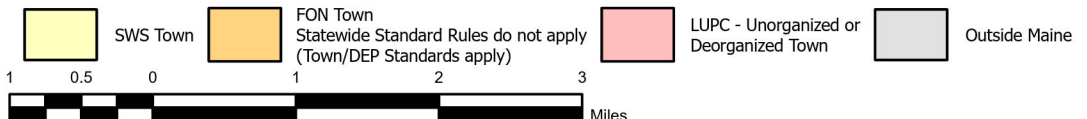
Wetlands

Non-forested Wetlands Greater Than 10 acres
(Lacustrine, Palustrine)
Emergent or Marine Wetland

Buffers



August 2025



*See MFS Rule - Chapter 21 for additional information.