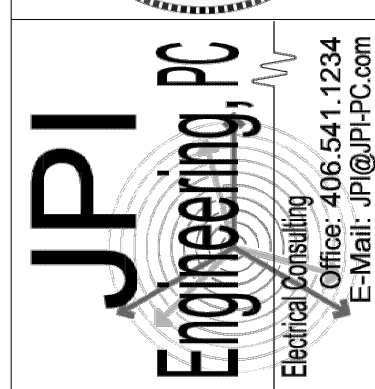
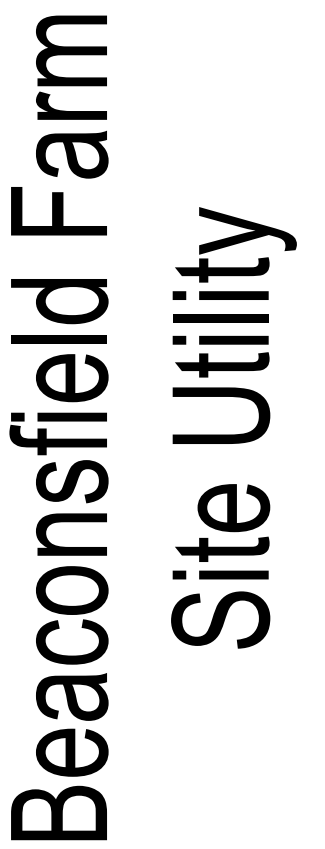


--	--	--



PASSION TO DESIGN.
INTEGRITY TO BUILD.
FREEDOM TO DREAM.

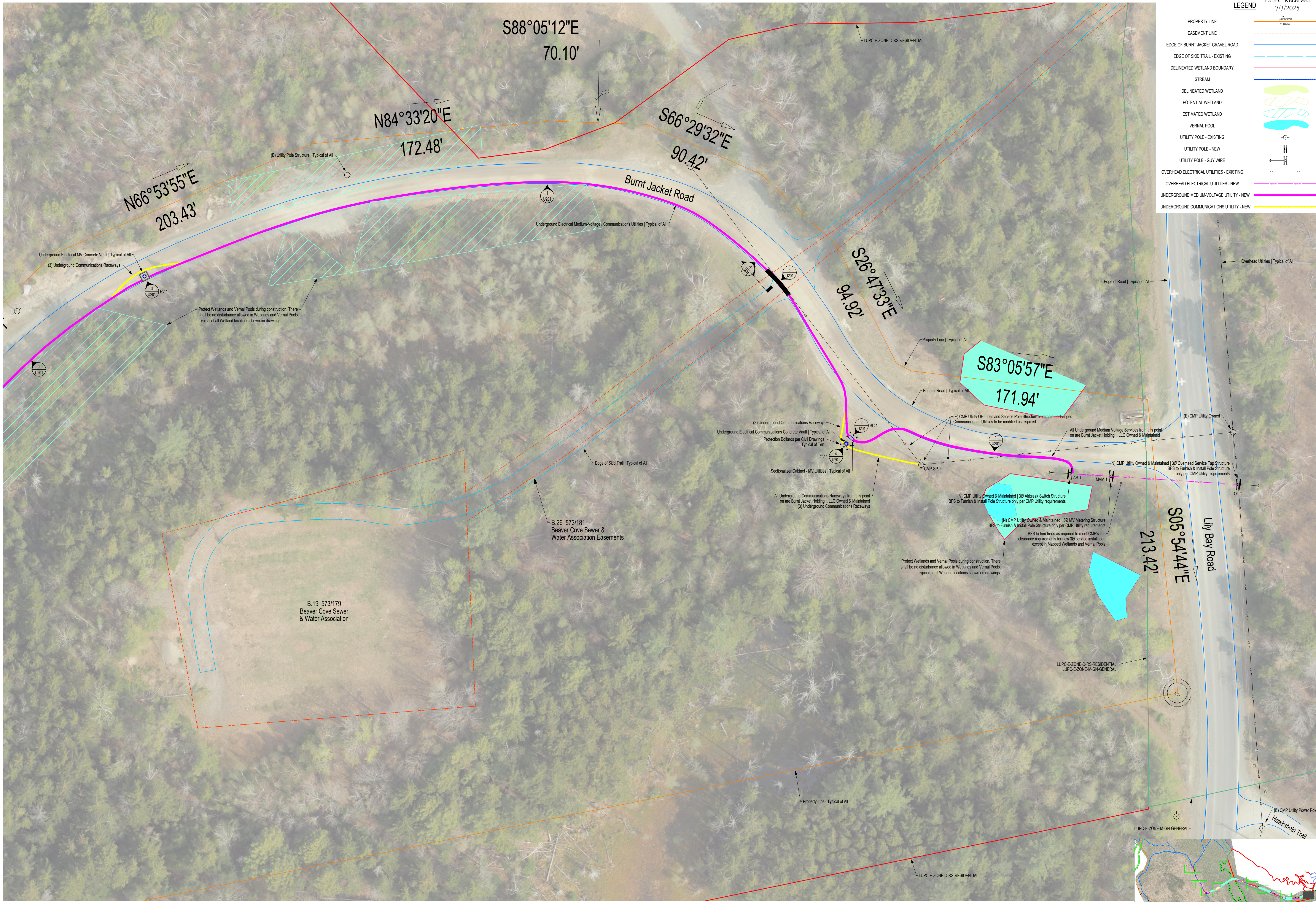


OVERALL SITE
UTILITY PLAN
1" = 500'

U001

© COPYRIGHT 2004


$$1'' = 500'$$



LEGEND

LUPC Received 7/3/2025

PROPERTY LINE
EASEMENT LINE
EDGE OF BURNT JACKET GRAVEL ROAD
EDGE OF SKID TRAIL - EXISTING
DELINEATED WETLAND BOUNDARY
STREAM
DELINEATED WETLAND
POTENTIAL WETLAND
ESTIMATED WETLAND
VERNAL POOL
UTILITY POLE - EXISTING
UTILITY POLE - NEW
UTILITY POLE - GUY WIRE
OVERHEAD ELECTRICAL UTILITIES - EXISTING
OVERHEAD ELECTRICAL UTILITIES - NEW
UNDERGROUND MEDIUM-VOLTAGE UTILITY - NEW
UNDERGROUND COMMUNICATIONS UTILITY - NEW

ISSUE DATE: 2025.06.02

REVISIONS	
DATE	DESCRIPTION

STATE OF MAINE
EXPIRES 2025.12.31
JAMES P. JACOBSON
PE 19019
LICENSED PROFESSIONAL ENGINEER

JPI
Engineering, PC
Electrical Engineering
Office: 405.541.1234
E-Mail: JPI@JPI-PC.com

140 E. Main St. | Suite A
Bozeman, Montana 59715
MT 406.587.8888 | WY 307.733.9021
jflarchitects.com

PASSION TO DESIGN.
INTEGRITY TO BUILD.
FREEDOM TO DREAM.

JFL
ARCHITECTS

Beaconsfield Farm
Site Utility

JOB: 24132
PARTIAL SITE
UTILITY PLAN
1" = 30'

BFF
U101

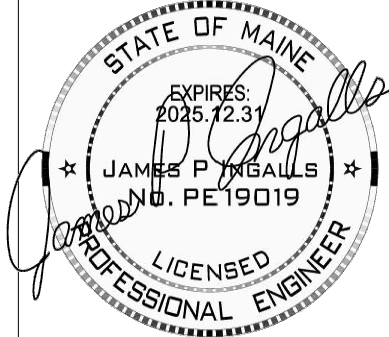
PROJECT STATUS: CONSTRUCTION DOCUMENTS



1 Partial Site | Power & Communications Utility Plan
1" = 30'

ISSUE DATE: 2025.06.02

REVISIONS		
DATE	DESCRIPTION	



JPI
Engineering, PC
Electrical Engineering
Office: 406.541.1234
E-Mail: JPI@JPI-PC.com

140 E. Main St. | Suite A
Bozeman, Montana 59715
MT 406.587.8888 | WY 307.733.9021
jllarchitects.com

PASSION TO DESIGN.
INTEGRITY TO BUILD.
FREEDOM TO DREAM.

JL
ARCHITECTS

Beaconsfield Farm Site Utility

JOB: 24132
PARTIAL SITE
UTILITY PLAN
1" = 30'
BFF
U102

PROJECT STATUS: CONSTRUCTION DOCUMENTS

© COPYRIGHT 2024



LUPC Received
7/3/2025

LEGEND

PROPERTY LINE	
EASEMENT LINE	
EDGE OF BURNT JACKET GRAVEL ROAD	
EDGE OF SKID TRAIL - EXISTING	
DELINEATED WETLAND BOUNDARY	
STREAM	
DELINEATED WETLAND	
POTENTIAL WETLAND	
ESTIMATED WETLAND	
VERNAL POOL	
UTILITY POLE - EXISTING	
UTILITY POLE - NEW	
UTILITY POLE - GUY WIRE	
OVERHEAD ELECTRICAL UTILITIES - EXISTING	
OVERHEAD ELECTRICAL UTILITIES - NEW	
UNDERGROUND MEDIUM-VOLTAGE UTILITY - NEW	
UNDERGROUND COMMUNICATIONS UTILITY - NEW	

ISSUE DATE: 2025.06.02

REVISIONS	
DATE	DESCRIPTION

PASSION TO DESIGN.
INTEGRITY TO BUILD.
FREEDOM TO DREAM.

Beaconsfield Farm
Site Utility

JOB: 24132

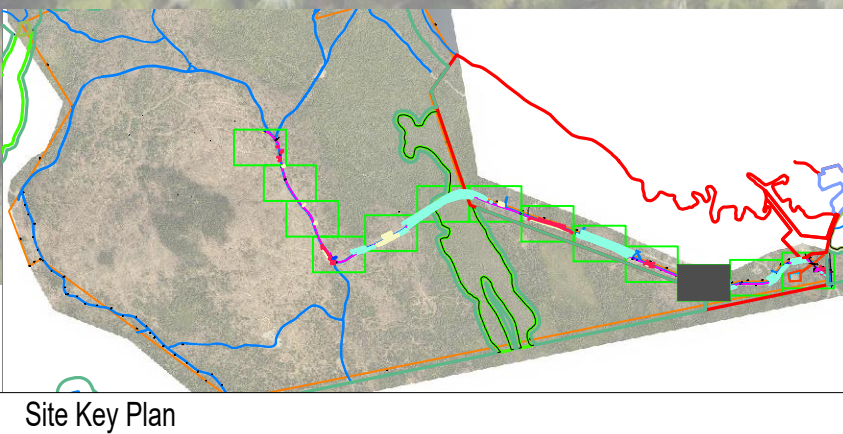
PARTIAL SITE
UTILITY PLAN
1" = 30'

BFF

U103

PROJECT STATUS: CONSTRUCTION DOCUMENTS

© COPYRIGHT 2024





LUPC Received
7/3/2025

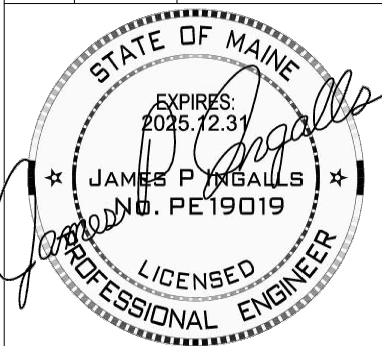
LEGEND

- PROPERTY LINE
- EASEMENT LINE
- EDGE OF BURNT JACKET GRAVEL ROAD
- EDGE OF SKID TRAIL - EXISTING
- DELINEATED WETLAND BOUNDARY
- STREAM
- DELINEATED WETLAND
- POTENTIAL WETLAND
- ESTIMATED WETLAND
- VERNAL POOL
- UTILITY POLE - EXISTING
- UTILITY POLE - NEW
- UTILITY POLE - GUY WIRE
- OVERHEAD ELECTRICAL UTILITIES - EXISTING
- OVERHEAD ELECTRICAL UTILITIES - NEW
- UNDERGROUND MEDIUM-VOLTAGE UTILITY - NEW
- UNDERGROUND COMMUNICATIONS UTILITY - NEW

ISSUE DATE: 2025.06.02

REVISIONS

DATE	DESCRIPTION



JPI
Engineering, PC
Electrical Engineering
Office: 406.541.1234
E-Mail: JPI@JPI-PC.com

140 E. Main St. | Suite A
Bozeman, Montana 59715
MT 406.587.8888 | WY 307.733.9021
jilarchitects.com

PASSION TO DESIGN.
INTEGRITY TO BUILD.
FREEDOM TO DREAM.



Beaconsfield Farm Site Utility

JOB: 24132

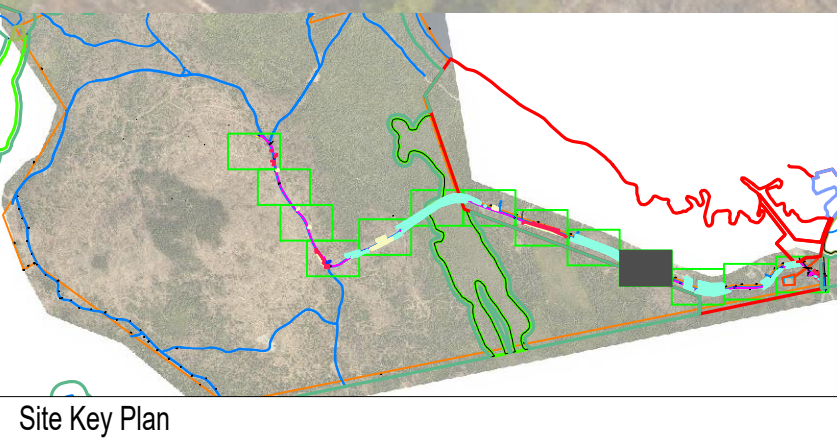
PARTIAL SITE
UTILITY PLAN
1" = 30'

BFF

U104

PROJECT STATUS: CONSTRUCTION DOCUMENTS

© COPYRIGHT 2024





LUPC Received
7/3/2025

LEGEND

- PROPERTY LINE
- EASEMENT LINE
- EDGE OF BURNT JACKET GRAVEL ROAD
- EDGE OF SKID TRAIL - EXISTING
- DELINEATED WETLAND BOUNDARY
- STREAM
- DELINEATED WETLAND
- POTENTIAL WETLAND
- ESTIMATED WETLAND
- VERNAL POOL
- UTILITY POLE - EXISTING
- UTILITY POLE - NEW
- UTILITY POLE - GUY WIRE
- OVERHEAD ELECTRICAL UTILITIES - EXISTING
- OVERHEAD ELECTRICAL UTILITIES - NEW
- UNDERGROUND MEDIUM-VOLTAGE UTILITY - NEW
- UNDERGROUND COMMUNICATIONS UTILITY - NEW

ISSUE DATE: 2025.06.02

REVISIONS	
DATE	DESCRIPTION

STATE OF MAINE

EXPIRES 2025.12.31

JAMES P. TREMBLE

PE 19019

LICENSED PROFESSIONAL ENGINEER

JPI Engineering, PC

Electrical Engineering

Office: 406.541.1234

E-Mail: JPI@JPI-PC.com

140 E. Main St. | Suite A
Bozeman, Montana 59715
MT 406.587.8888 | WY 307.733.9021
jpiarchitects.com

PASSION TO DESIGN.
INTEGRITY TO BUILD.
FREEDOM TO DREAM.

JL ARCHITECTS

Beaconsfield Farm
Site Utility

JOB: 24132

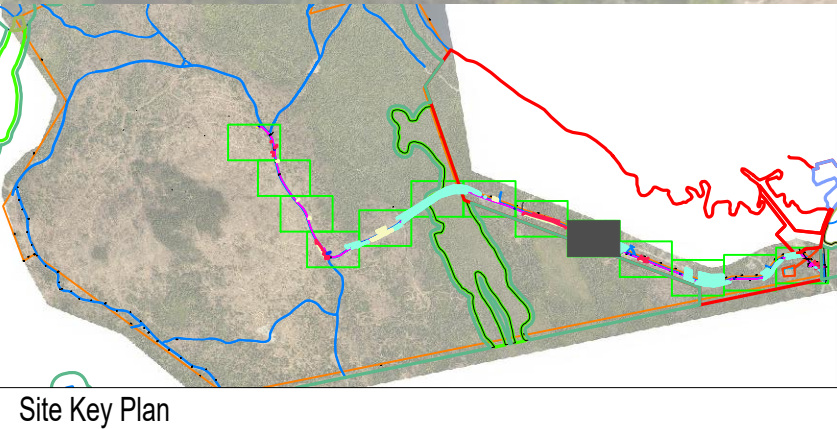
PARTIAL SITE
UTILITY PLAN
1" = 30'

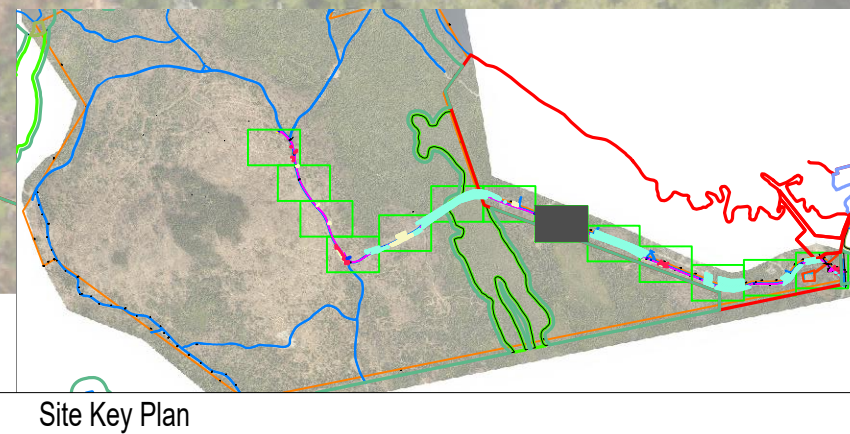
BFF

U105

PROJECT STATUS: CONSTRUCTION DOCUMENTS

© COPYRIGHT 2024





1

LEGEND

PROPERTY LINE

EASEMENT LINE

EDGE OF BURNT JACKET GRAVEL ROAD

EDGE OF SKID TRAIL - EXISTING

DELINEATED WETLAND BOUNDARY

STREAM

DELINEATED WETLAND

POTENTIAL WETLAND

ESTIMATED WETLAND

VERNAL POOL

UTILITY POLE - EXISTING

UTILITY POLE - NEW

UTILITY POLE - GUY WIRE

OVERHEAD ELECTRICAL UTILITIES - EXISTING

OVERHEAD ELECTRICAL UTILITIES - NEW

UNDERGROUND MEDIUM-VOLTAGE UTILITY - NEW

UNDERGROUND COMMUNICATIONS UTILITY - NEW

ISSUE DATE: 2025.06.02		
REVISONS		
Δ	DATE	DESCRIPTION
JPI Engineering, PC Electrical Quality 406 541 1234 Office: JPI@JPI-PC.com E-Mail: JPI@JPI-PC.com		

140 E. Main St. | Suite A
Bozeman, Montana 59715
MT 406.587.8888 | WY 307.733.9021
jlfarchitects.com

PASSION TO DESIGN.
INTEGRITY TO BUILD.
FREEDOM TO DREAM.



Beaconsfield Farm Site Utility

JOB: 24132

PARTIAL SITE
UTILITY PLAN
1" = 30'

BFF

U106

PROJECT STATUS: CONSTRUCTION DOCUMENTS

© COPYRIGHT 2024



LUPC Received
7/3/2025

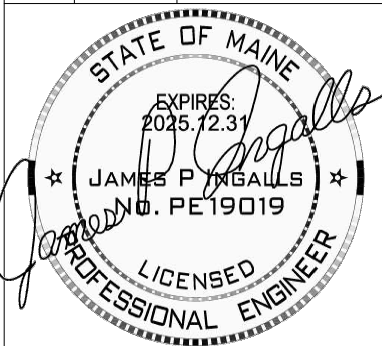
LEGEND

- PROPERTY LINE
- EASEMENT LINE
- EDGE OF BURNT JACKET GRAVEL ROAD
- EDGE OF SKID TRAIL - EXISTING
- DELINEATED WETLAND BOUNDARY
- STREAM
- DELINEATED WETLAND
- POTENTIAL WETLAND
- ESTIMATED WETLAND
- VERNAL POOL
- UTILITY POLE - EXISTING
- UTILITY POLE - NEW
- UTILITY POLE - GUY WIRE
- OVERHEAD ELECTRICAL UTILITIES - EXISTING
- OVERHEAD ELECTRICAL UTILITIES - NEW
- UNDERGROUND MEDIUM-VOLTAGE UTILITY - NEW
- UNDERGROUND COMMUNICATIONS UTILITY - NEW

ISSUE DATE: 2025.06.02

REVISIONS

DATE	DESCRIPTION



JPI
Engineering, PC
Electrical Engineering
Office: 406.541.1234
E-Mail: JPI@JPI-PC.com

140 E. Main St. | Suite A
Bozeman, Montana 59715
MT 406.587.8888 | WY 307.733.9021
jpiarchitects.com

PASSION TO DESIGN.
INTEGRITY TO BUILD.
FREEDOM TO DREAM.



Beaconsfield Farm Site Utility

JOB: 24132

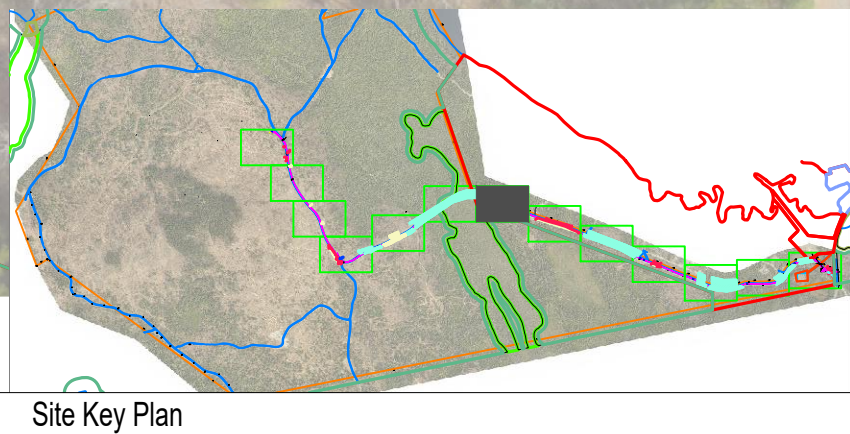
PARTIAL SITE
UTILITY PLAN
1" = 30'

BFF

U107

PROJECT STATUS: CONSTRUCTION DOCUMENTS

© COPYRIGHT 2024



LEGEND

PROPERTY LINE

87°52'19"
11.06.52'

EASEMENT LINE

EDGE OF BURNT JACKET GRAVEL ROAD

EDGE OF SKID TRAIL - EXISTING

DELINEATED WETLAND BOUNDARY

STREAM

DELINEATED WETLAND

POTENTIAL WETLAND

ESTIMATED WETLAND

VERNAL POOL

UTILITY POLE - EXISTING

○

UTILITY POLE - NEW

⊥

UTILITY POLE - GUY WIRE

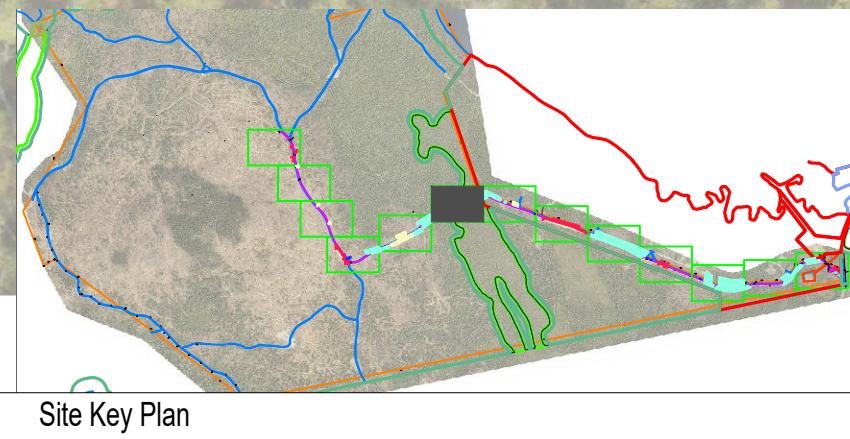
←

OVERHEAD ELECTRICAL UTILITIES - EXISTING

OVERHEAD ELECTRICAL UTILITIES - NEW

UNDERGROUND MEDIUM-VOLTAGE UTILITY - NEW

UNDERGROUND COMMUNICATIONS UTILITY - NEW



1 Partial Site | Power & Communications Utility Plan
1" = 30'

ISSUE DATE: 2025.06.02

REVISIONS

DATE	DESCRIPTION
------	-------------

STATE OF MAINE

EXPIRES 2025.12.31

* JAMES P. JPI *
JPI
PE19019

LICENSED PROFESSIONAL ENGINEER

JPI

Engineering, PC

Electrical Engineering

Office: 406.541.1234

E-Mail: JPI@JPI-PC.com

140 E. Main St. | Suite A
Bozeman, Montana 59715
MT 406.587.8888 | WY 307.733.9021
jilarchitects.com

PASSION TO DESIGN.
INTEGRITY TO BUILD.
FREEDOM TO DREAM.

JIL

ARCHITECTS

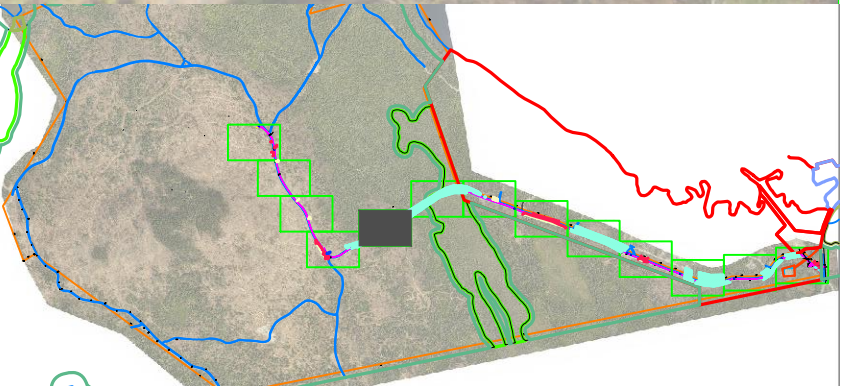
Beaconsfield Farm
Site Utility

JOB: 24132

PARTIAL SITE
UTILITY PLAN
1" = 30'

BFF

U108



1

STATE OF MAINE
EXPIRES: 2025.12.31
JAMES P. INGALLS
NO. PE19019
LICENSED PROFESSIONAL ENGINEER



JL
ARCHITECTS

Beaconsfield Farm Site Utility

PARTIAL SITE
UTILITY PLAN
1" = 30'

U109

PROJECT STATUS: CONSTRUCTION DOCUMENTS



LEGEND		
PROPERTY LINE		11.06.50'
EASEMENT LINE		
EDGE OF BURNT JACKET GRAVEL ROAD		
EDGE OF SKID TRAIL - EXISTING		
DELINEATED WETLAND BOUNDARY		
STREAM		
DELINEATED WETLAND		
POTENTIAL WETLAND		
ESTIMATED WETLAND		
VERNAL POOL		
UTILITY POLE - EXISTING		
UTILITY POLE - NEW		
UTILITY POLE - GUY WIRE		
OVERHEAD ELECTRICAL UTILITIES - EXISTING		
OVERHEAD ELECTRICAL UTILITIES - NEW		
UNDERGROUND MEDIUM-VOLTAGE UTILITY - NEW		
UNDERGROUND COMMUNICATIONS UTILITY - NEW		

ISSUE DATE: 2025.06.02

REVISIONS		
Δ	DATE	DESCRIPTION

STATE OF MAINE
EXPIRES 2025.12.31
JAMES P. JPI
PE19019
LICENSED PROFESSIONAL ENGINEER

JPI Engineering, PC
Electrical Consulting
Office: 406.541.1234
E-Mail: JPI@JPPC.com

140 E. Main St. | Suite A
Bozeman, Montana 59715
MT 406.587.8888 | WY 307.733.9021
jllarchitects.com

PASSION TO DESIGN.
INTEGRITY TO BUILD.
FREEDOM TO DREAM.

JLL ARCHITECTS

Beaconsfield Farm Site Utility

JOB: 24132

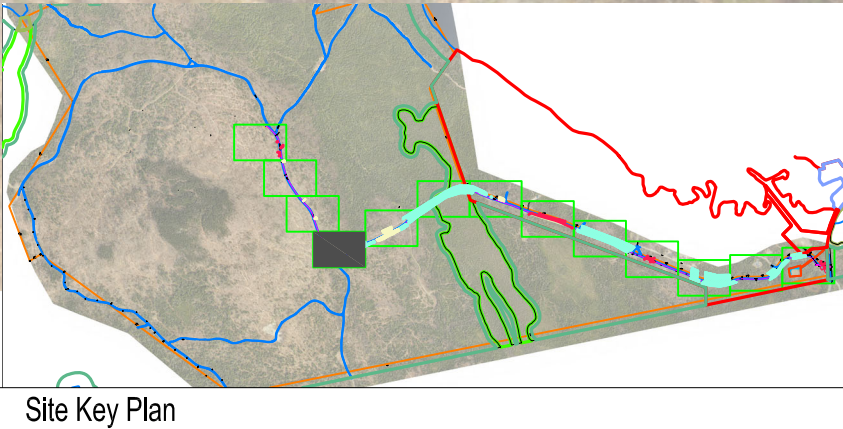
PARTIAL SITE
UTILITY PLAN
1" = 30'

BFF

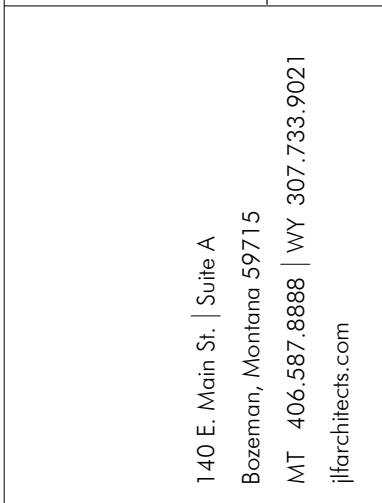
U110

PROJECT STATUS: CONSTRUCTION DOCUMENTS

© COPYRIGHT 2024



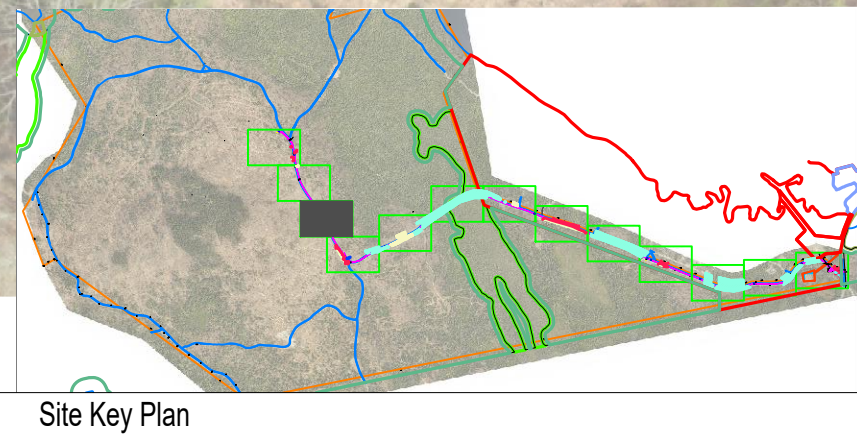
STATE OF MAINE
EXPIRES: 2025.12.31
JAMES P. INGALLS
No. PE19019
LICENSED PROFESSIONAL ENGINEER

The logo for JL Architects, featuring the letters 'JL' in a large, stylized, white font on a black square background, with the word 'ARCHITECTS' in a smaller, white, sans-serif font to the right.

PROJECT STATUS: CONSTRUCTION DOCUMENTS

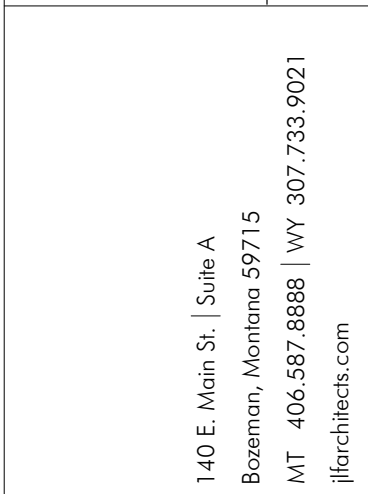
PARTIAL SITE
UTILITY PLAN
1" = 30'

U111



1 Partial Site | Power & Communications Utility Plan

STATE OF MAINE
EXPIRES: 2025.12.31
★ JAMES P. INGALLS ★
NO. PE19019
LICENSED PROFESSIONAL ENGINEER



PROJECT STATUS: CONSTRUCTION DOCUMENTS

U112

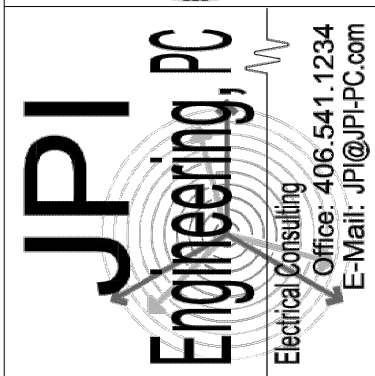
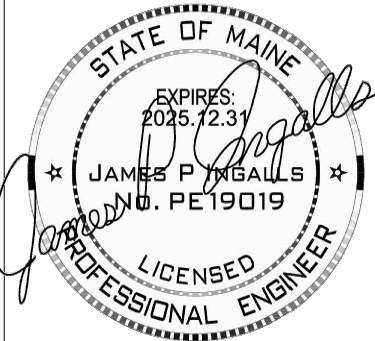
1 Partial Site | Power & Communications Utility Plan



1 Partial Site | Power & Communications Utility Plan
1" = 30'

ISSUE DATE: 2025.06.02

REVISIONS		
DATE	DESCRIPTION	



140 E. Main St. | Suite A
Bozeman, Montana 59715
MT 406.587.8888 | WY 307.733.9021
jpiarchitects.com



Beaconsfield Farm Site Utility

JOB: 24132

PARTIAL SITE
UTILITY PLAN
1" = 30'

BFF

U113

PROJECT STATUS: CONSTRUCTION DOCUMENTS