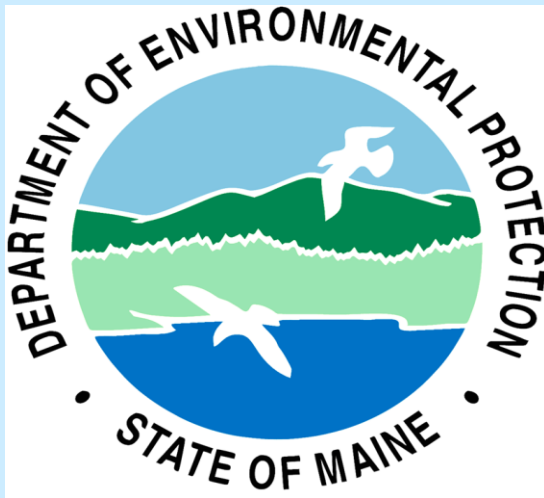


# Maine's VW Settlement



Governor's Energy Office



**MaineDOT**

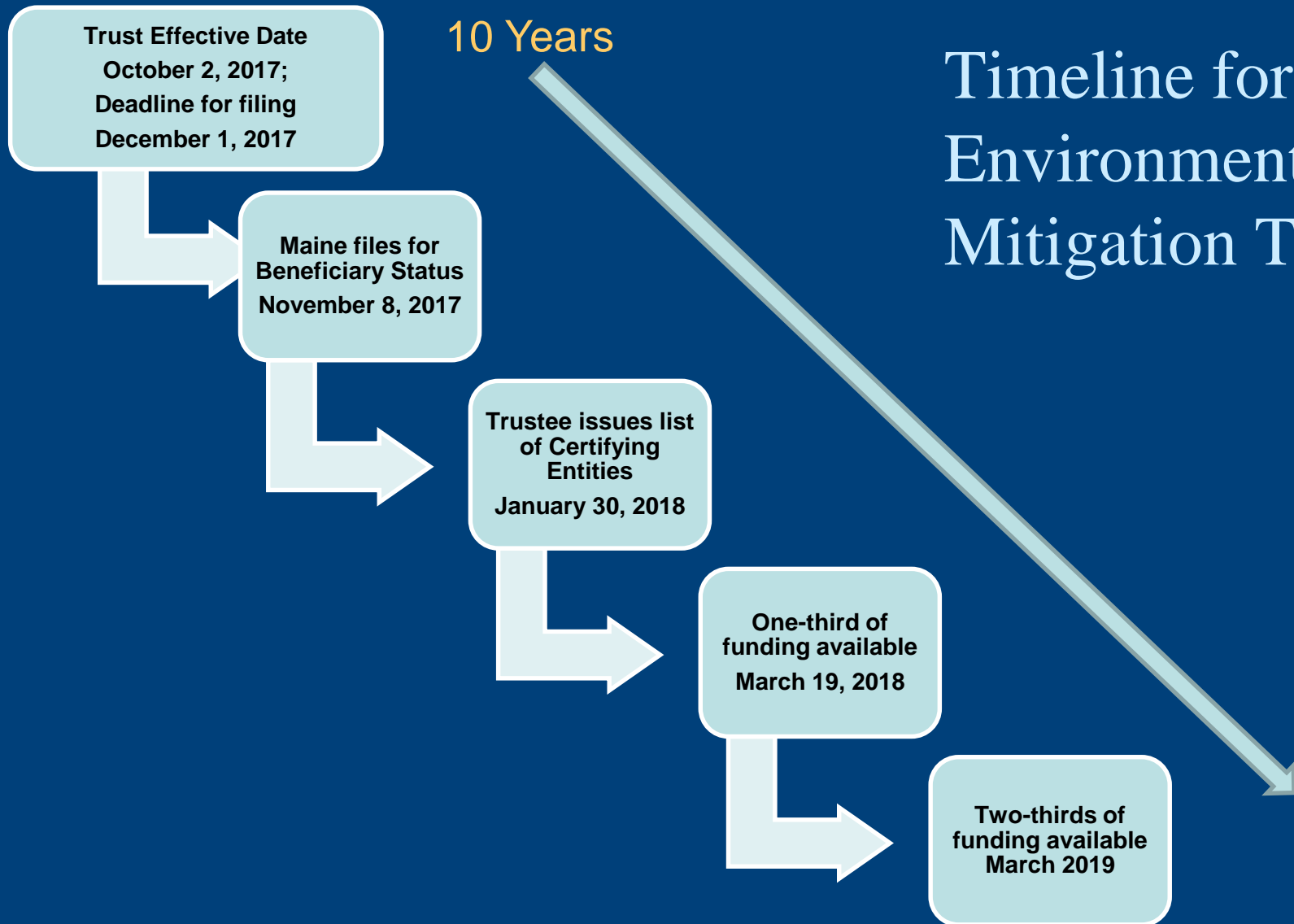
[judy.gates@maine.gov](mailto:judy.gates@maine.gov)

[mainedot.gov/vw](http://mainedot.gov/vw)

# VW Class Action Settlement

Component	Total Dollars
Vehicle buy-back/repair	\$10 billion
National ZEV investment plan & education	\$2 billion
Environmental mitigation trust	\$2.7 billion
<b>Total</b>	<b>\$14.7 billion</b>

# Timeline for Environmental Mitigation Trust



# Maine's Process



Governor's Office approval to proceed



Designate lead agency



Draft and post Beneficiary Mitigation Plan for public comment



Develop grant process, selection criteria, reporting requirements



Requests for Proposals



Award projects

# Maine's Proposed Distribution VW Environmental Mitigation Settlement

Program	% of Total	Total Dollars
State Multimodal Priorities	40%	\$8.4 million
Municipal & Private Appendix D	25%	\$5.3 million
Diesel Emission Reduction Act (DERA) Option	20%	\$4.2 million
Light Duty Electric Vehicle Supply Equipment	15%	\$3.1 million
<b>Total</b>	<b>100%</b>	<b>\$21 million</b>

# Maine's Proposed Distribution VW Environmental Mitigation Settlement

Program	% of Total	Total Dollars	Total Dollars available Year 1	Total Dollars available Year 2
State Multimodal Priorities	40%	\$8.4 million	\$2.8 million	\$5.6 million
Municipal & Private Appendix D	25%	\$5.3 million	\$1.75 million	\$3.5 million
Diesel Emission Reduction Act (DERA) Option	20%	\$4.2 million	\$1.4 million	\$2.8 million
Light Duty Electric Vehicle Supply Equipment	15%	\$3.1 million	\$1.02 million	\$2.04 million
<b>Total</b>	<b>100%</b>	<b>\$21 million</b>	<b>\$7 million</b>	<b>\$13.9 million</b>

# Grant Program Sponsors

DEP-DERA

GEO-EVSE

DOT-App D

- Relevant experience
- Familiar process
- Capacity
- Financial chain of custody
- Record of decision-making
- Publicly accessible

# What actions are eligible under Appendix D?

## Replacement of:

- Class 8 local freight or port drayage equipment;
- Class 4-8 school, shuttle, or transit buses;
- Pre-tier 4 freight switchers;
- Tier 1 or 2 unregulated ferry or tug engines;
- Class 4-7 local freight trucks;
- Airport ground support equipment;
- Forklifts and port cargo handling equipment;

## Funding for:

- Shore power for ocean going vessels;
- Light duty electric vehicle supply equipment; or
- Non-federal voluntary match for the Diesel Emission Reduction Act (DERA) program.





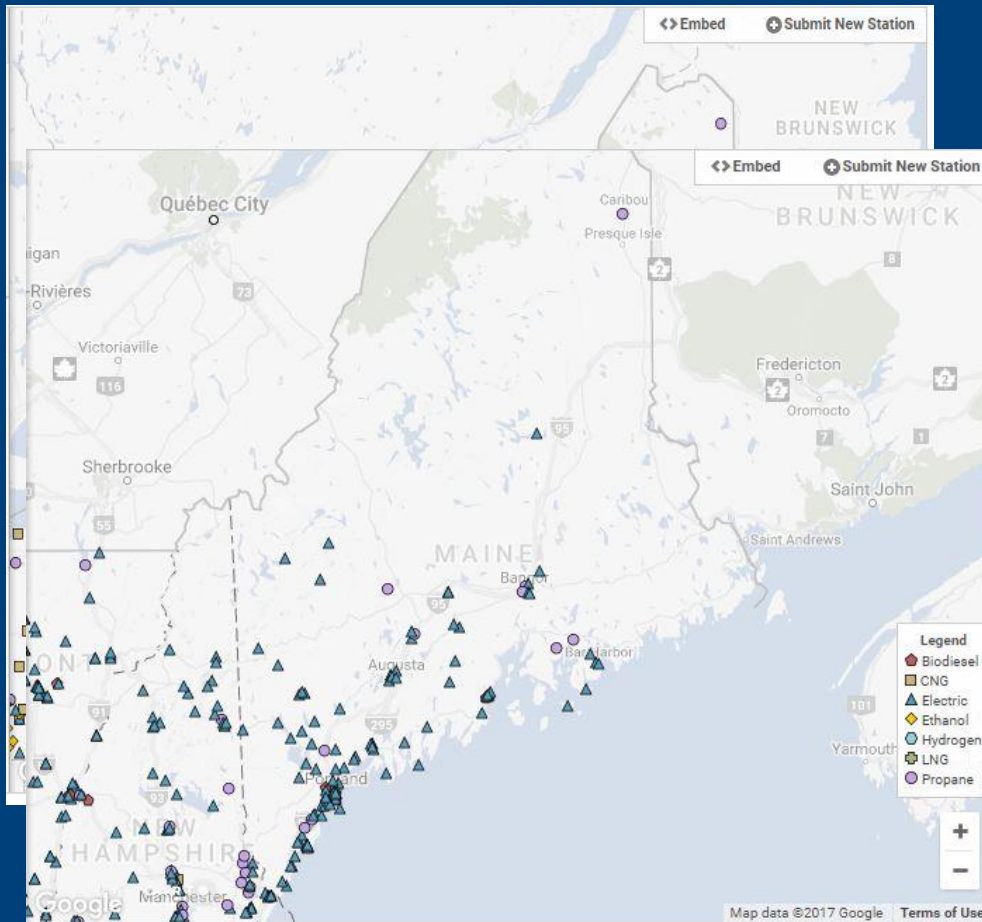
# What actions are eligible under DERA?

## Replacement of...

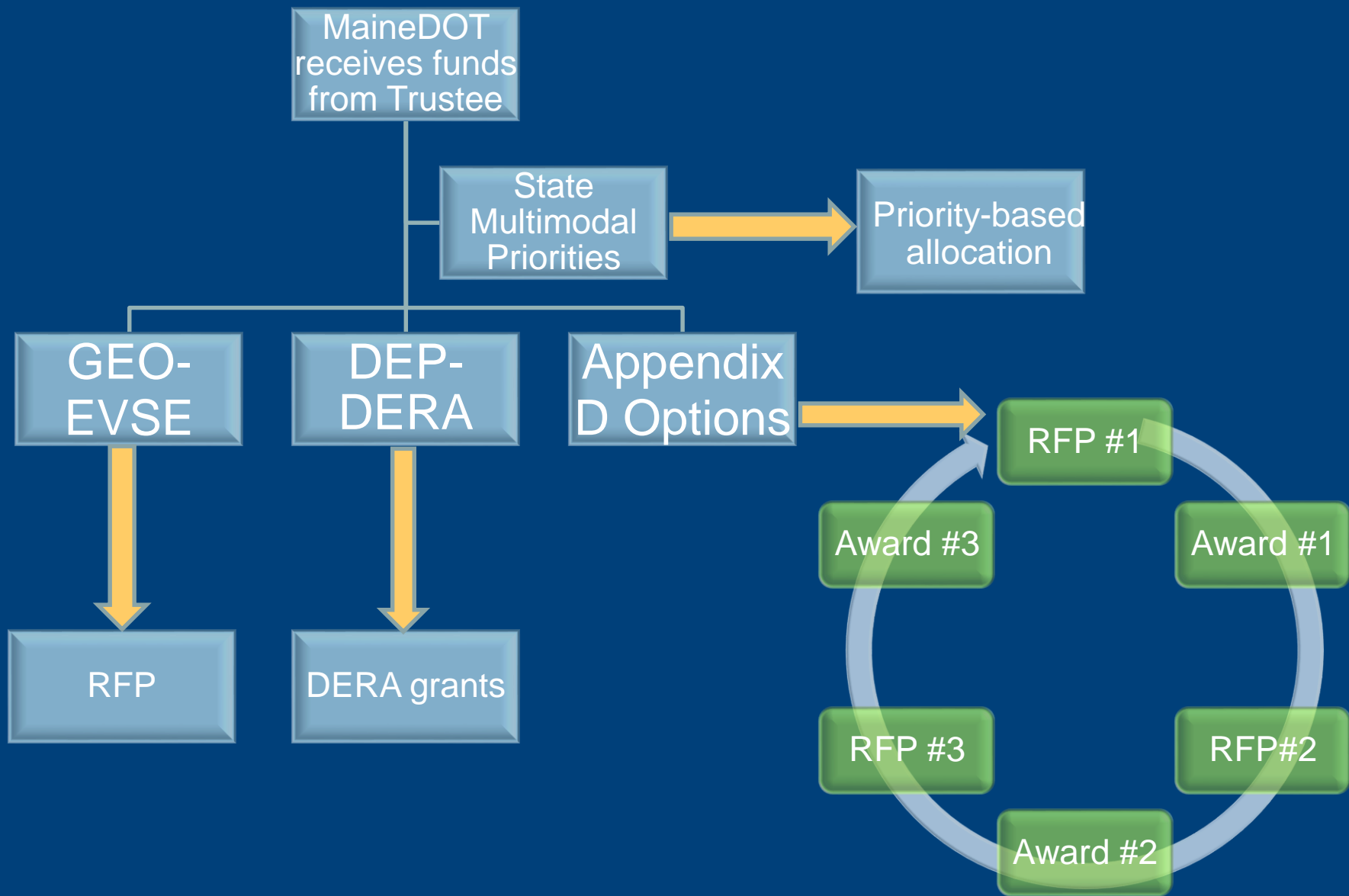
- Marine engines
- On-highway trucks & buses
- Off-road equipment (e.g. construction, forestry, agricultural)
- Locomotives
- No-idling technologies



# EVSE Priorities



- Political commitments
- FHWA corridor designation
- Vehicle range
- Existing infrastructure
- Safety/facilities



# MaineDOT Responsibilities

- Incumbent Certification
- Applicability of confidential business information laws
- Authorized Individuals
- Bi-annual reporting
- Public accessibility to information
- Tracking the money



# Project Considerations

- ✓ Relationship to Maine's Beneficiary Mitigation Plan
- ✓ NOx reduction per dollar spent
- ✓ Geographic location
- ✓ Maximize public health benefits
- ✓ Areas receiving localized air pollution
- ✓ Available match funding
- ✓ Demonstrated relevant project delivery experience



# Resources

- DERA-Environmental Mitigation Trust Comparison
- Issue Summary
- Draft Beneficiary Mitigation Plan
- Court documents
- This presentation
- .....



[mainedot.gov/vw](http://mainedot.gov/vw)

General:

[judy.gates@maine.gov](mailto:judy.gates@maine.gov)

[www.mainedot/vw](http://www.mainedot/vw)

Questions?

DERA:

[lynne.a.cayting@maine.gov](mailto:lynne.a.cayting@maine.gov)

[www.maine.gov/air/mobile/cleandiesel](http://www.maine.gov/air/mobile/cleandiesel)

EVSE:

[lisa.j.smith@maine.gov](mailto:lisa.j.smith@maine.gov)

[www.maine.gov/energy](http://www.maine.gov/energy)