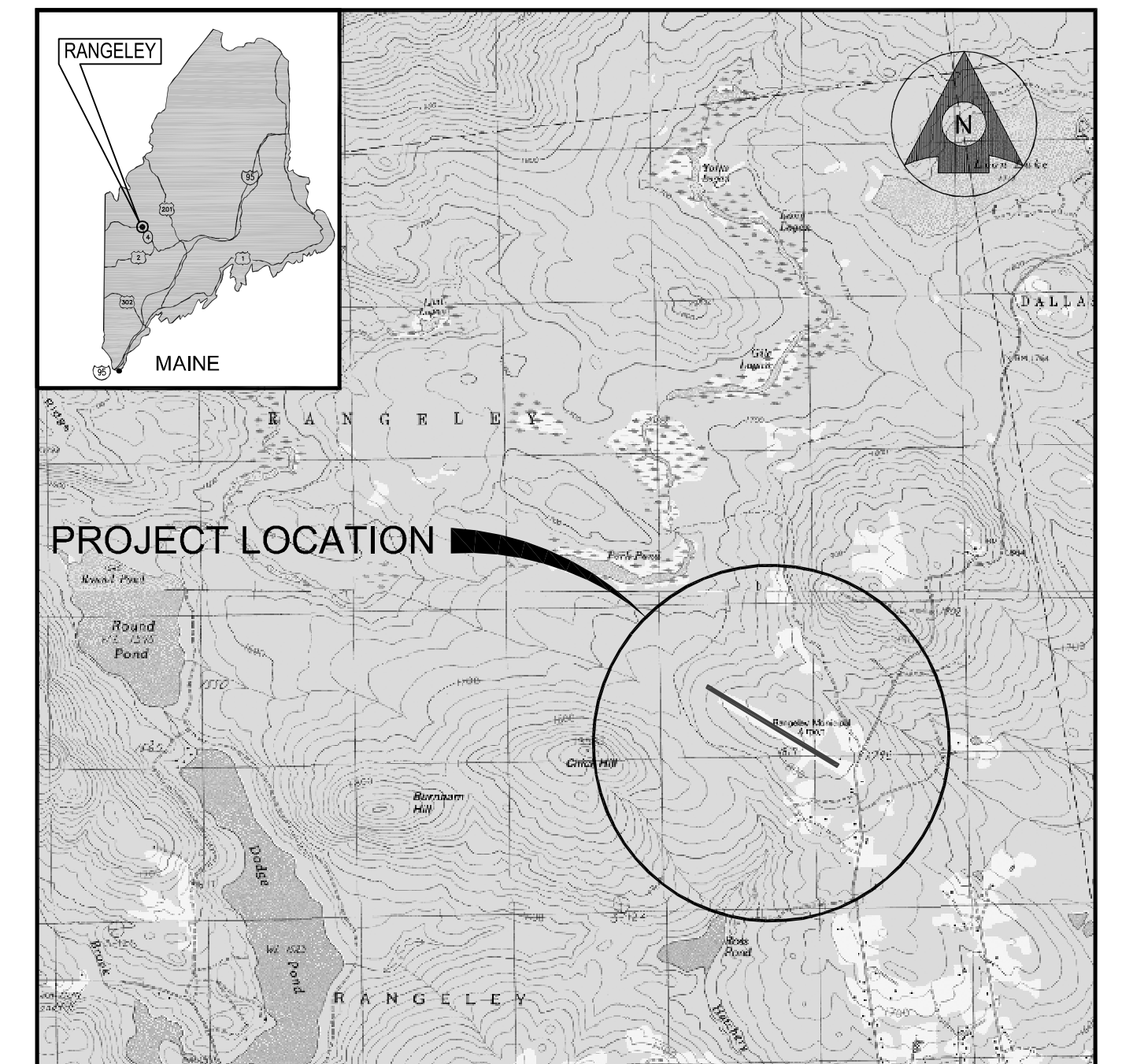


Stantec

# STEVEN A. BEAN MUNICIPAL AIRFIELD RANGELEY, MAINE

# AIRPORT MASTER PLAN UPDATE

APRIL 2012  
A.I.P PROJECT NO. 3-23-0049-11-2011



VICINITY MAP  
NOT TO SCALE



## INDEX OF SHEETS

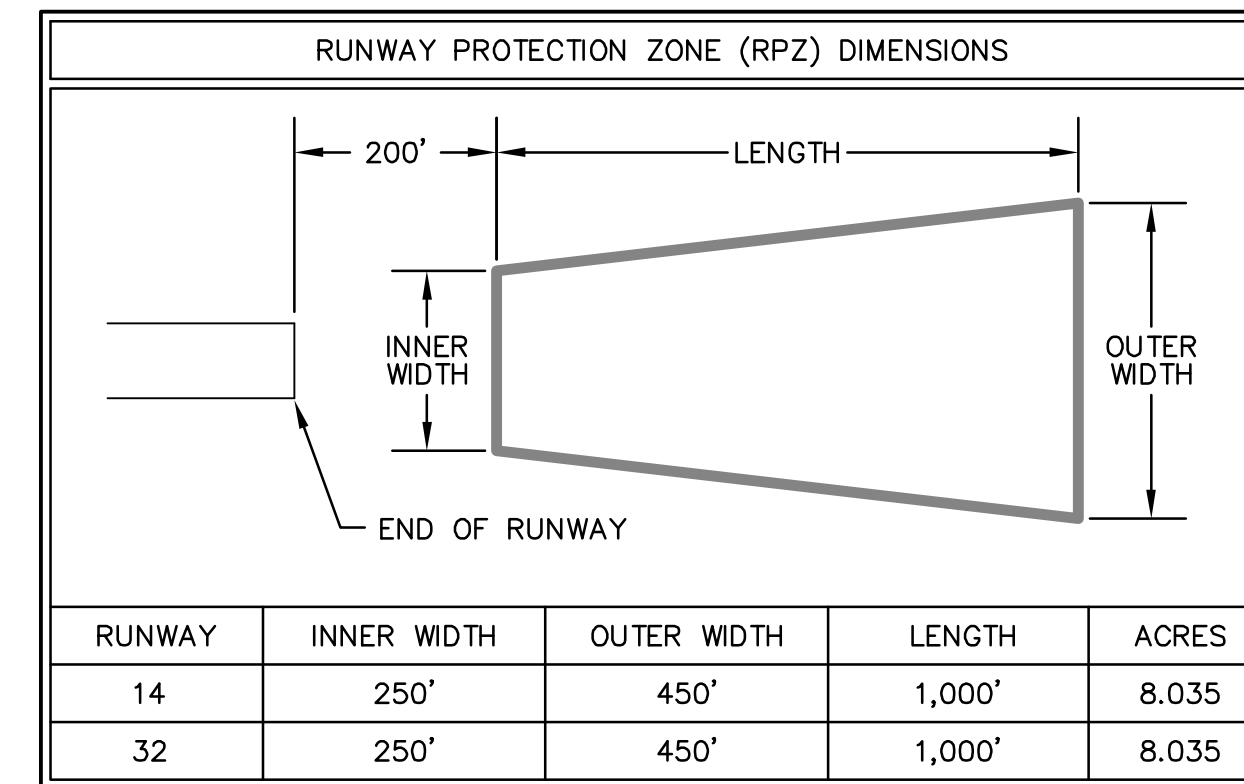
<u>SHEET NO.</u>	<u>TITLE</u>
1.	TITLE SHEET
2.	EXISTING AIRPORT LAYOUT PLAN
3.	ULTIMATE AIRPORT LAYOUT PLAN
4.	TERMINAL AREA PLAN
5.	RUNWAY 14-32 APPROACH PLAN AND PROFILE
6.	FAR PART 77 IMAGINARY SURFACES PLAN
7.	LAND USE PLAN

RUNWAY DATA	EXISTING	
	RUNWAY 14	RUNWAY 32
RUNWAY LENGTH	3,200'	
RUNWAY WIDTH	75'	
USABLE RUNWAY LENGTH	3,200'	
PAVEMENT SURFACE TYPE	ASPHALT	
PAVEMENT STRENGTH	12.5 SW	
APPROACH SURFACES	20:1 VISUAL	20:1 VISUAL
FAR PART 77 CATEGORY	UTILITY	UTILITY
APPROACH MINIMUMS	600-1	600-1
VISUAL APPROACH AIDS	NONE	REIL
INSTRUMENT APPROACH AIDS	NDB, GPS	NDB, GPS
RUNWAY MARKINGS	NON-PRECISION	NON-PRECISION
RUNWAY LIGHTING	MIRL	
AMBER LENSES LAST HALF	Y	N
EFFECTIVE GRADIENT	0.18%	
MAX. GRADE CHANGE	0.49%	
WIND COVERAGE (%)	98.3%	
RUNWAY SAFETY AREA	120' WIDE x 300' BEYOND RUNWAY ENDS	
RUNWAY OBJECT-FREE AREA	250' WIDE x 300' BEYOND RUNWAY ENDS	
RUNWAY OBJECT-FREE ZONE	250' WIDE x 200' BEYOND RUNWAY ENDS	
MAX. ELEV	1,825.3	
RUNWAY-END ELEVATIONS	1,823.2' MSL	1,817.5' MSL
RUNWAY-END	LAT. 44° 59' 38.9"N	LAT. 44° 59' 22.74"N
COORDINATES	LONG. 70° 40' 11.78"W	LONG. 70° 39' 33.52"W

AIRPORT DATA	EXISTING
AIRPORT ELEVATION	1825.3' MSL
AIRPORT REFERENCE POINT (ARP)	LAT. 44° 59' 30.82" N LONG. 70° 39' 52.65" W
MEAN MAX. TEMP. (HOTTEST MO.)	80° F
AIRPORT & TERMINAL AREA NAVAIDS	REIL, NDB, BEACON
MAGNETIC VARIATION	16.2W 9/21/2010
NPIAS SERVICE LEVEL	GENERAL AVIATION
STATE SERVICE LEVEL	GENERAL AVIATION
AIRPORT REFERENCE CODE (ARC)	A-1
DESIGN AIRCRAFT	CESSNA 172
TAXIWAY LIGHTING	NONE
TAXIWAY MARKING	CENTERLINE

EXISTING	BUILDINGS	TOP ELEV.
①	T-HANGAR	1842'
②	CONVENTIONAL HANGAR	1844'
③	CONVENTIONAL HANGAR	1844'
④	FUEL TANKS	1830'
⑤	ARRIVALS BUILDING	1833'
⑥	SRE/ARRIVALS BUILDING	1845'

LEGEND	EXISTING
AIRPORT PROPERTY LINE	---
ABUTTERS' PROPERTY LINE	---
AIRPORT PAVEMENT	=====
BUILDINGS	□
25' CONTOUR	- - - - - 1825 - - - - -
ROADS	=====
TREELINE	~~~~~
AIRPORT REFERENCE POINT	⊙
RUNWAY SAFETY AREA (RSA)	--- RSA ---
RUNWAY OBSTACLE FREE ZONE (OFZ)	--- OFZ ---
RUNWAY OBJECT FREE AREA (ROFA)	--- ROFA ---
BUILDING RESTRICTION LINE (BRL)	--- BRL ---
RUNWAY PROTECTION ZONE	=====

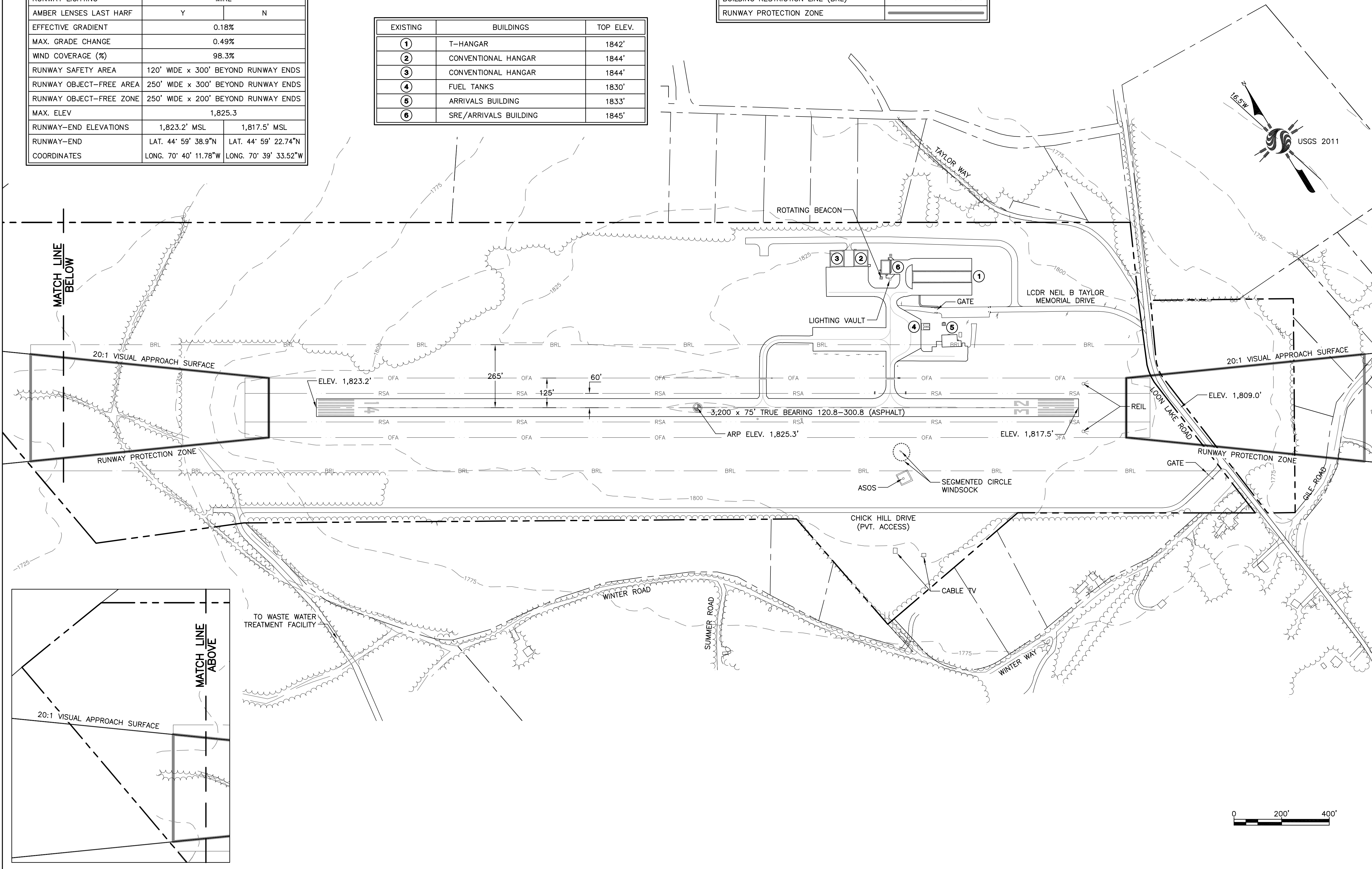


Copyright Reserved  
The Contractor shall verify and be responsible for all dimensions. DO NOT scale the drawing -- any errors or omissions shall be reported to Stantec without delay.  
The Copyrights to all designs and drawings are the property of Stantec. Reproduction or use for any purpose other than that authorized by Stantec is forbidden.

Consultants

Legend

Notes



Revision	By	Appd.	YY.MM.DD

Issued \_\_\_\_\_ By \_\_\_\_\_ Appd. \_\_\_\_\_ YY.MM.DD

File Name: SHL\_02\_ALP.dwg LRK ECD ECD 10.10.01  
Dwn. Chkd. Dsgn. YY.MM.DD

Permit-Seal \_\_\_\_\_

Client/Project  
STEVEN A. BEAN MUNICIPAL AIRFIELD  
A.I.P 3-23-0049-11-2011  
**AIRPORT MASTER PLAN UPDATE**  
RANGELEY, MAINE  
Title  
**EXISTING AIRPORT LAYOUT PLAN**

Project No.	Scale	
195210450	1" = 200'	
Drawing No.	Sheet	Revision

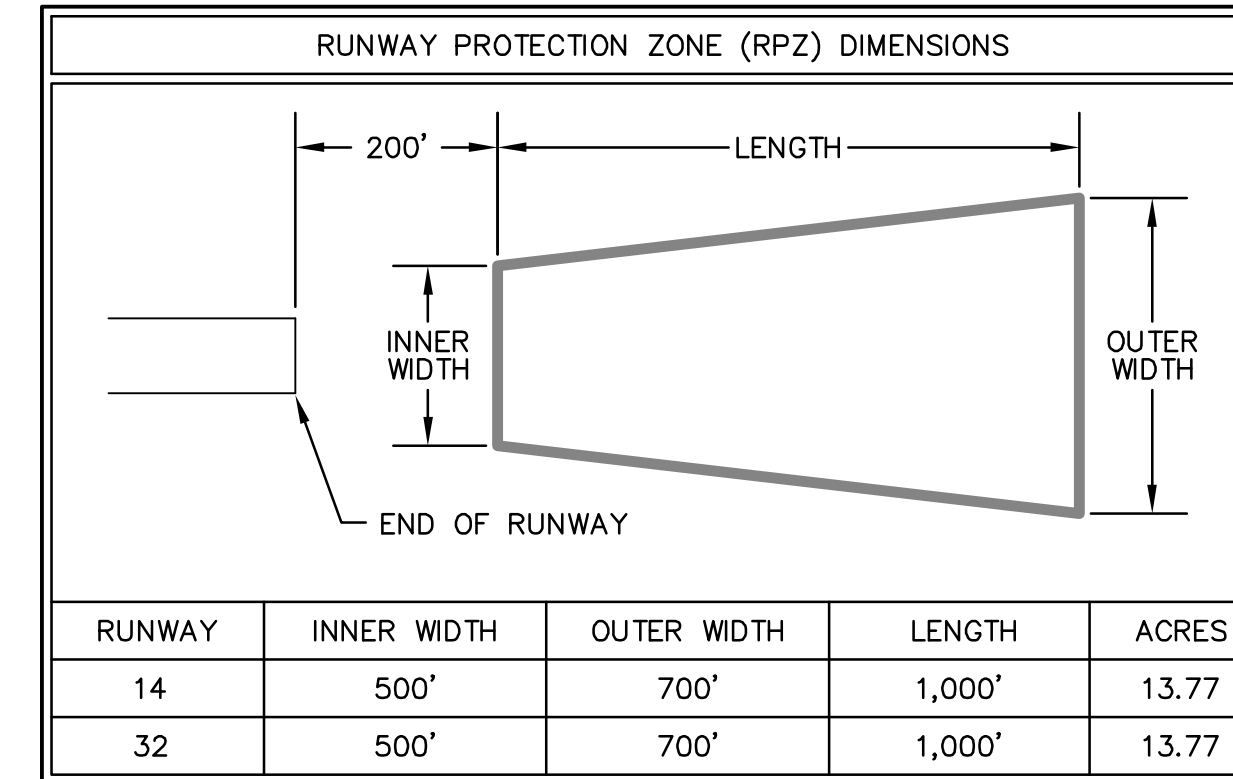
V:\195210450\1952\_ALP\_Alt\_Edits\_Edits\_Airport\Drawings\ALP.dwg, Layout1, 4/12/2012 2:02:15 PM, Mking, pl, E, rev01.rvt

RUNWAY DATA	EXISTING / PROPOSED	
	RUNWAY 14	RUNWAY 32
RUNWAY LENGTH	3,200'	
RUNWAY WIDTH	75'	
USABLE RUNWAY LENGTH	3,200'	
PAVEMENT SURFACE TYPE	ASPHALT	
PAVEMENT STRENGTH	12.5 SW	
APPROACH SURFACES	20:1 VISUAL	20:1 VISUAL
FAR PART 77 CATEGORY	UTILITY	UTILITY
APPROACH MINIMUMS	600-1	600-1
VISUAL APPROACH AIDS	REIL	REIL/PAPI
INSTRUMENT APPROACH AIDS	NDB, GPS	NDB, GPS
RUNWAY MARKINGS	NON-PRECISION	NON-PRECISION
RUNWAY LIGHTING	MIRL	
AMBER LENSES LAST HALF	Y	N
EFFECTIVE GRADIENT	0.18%	
MAX. GRADE CHANGE	0.49%	
WIND COVERAGE (%)	98.3%	
RUNWAY SAFETY AREA	150' WIDE x 300' BEYOND RUNWAY ENDS	
RUNWAY OBJECT-FREE AREA	500' WIDE x 300' BEYOND RUNWAY ENDS	
RUNWAY OBJECT-FREE ZONE	300' WIDE x 200' BEYOND RUNWAY ENDS	
MAX. ELEV.	1,825.3	
RUNWAY-END ELEVATIONS	1,823.2' MSL	1,817.5' MSL
RUNWAY-END	LAT. 44° 59' 38.9"N	LAT. 44° 59' 22.74"N
COORDINATES	LONG. 70° 40' 11.78"W	LONG. 70° 39' 33.52"W

AIRPORT DATA	EXISTING	PROPOSED
AIRPORT ELEVATION	1825.3' MSL	SAME
AIRPORT REFERENCE POINT (ARP)	LAT. 44° 59' 30.82" N LONG. 70° 39' 52.65" W	SAME
MEAN MAX. TEMP. (HOTTEST MO.)	80° F	SAME
AIRPORT & TERMINAL AREA NAVAIDS	REIL, NDB, BEACON	SAME
NPIAS SERVICE LEVEL	GENERAL AVIATION	SAME
STATE SERVICE LEVEL	GENERAL AVIATION	SAME
AIRPORT REFERENCE CODE (ARC)	A-I	B-II
DESIGN AIRCRAFT	CESSNA 172	BEECH 200
TAXIWAY LIGHTING	NONE	SAME
TAXIWAY MARKING	CENTERLINE	SAME

EXISTING	BUILDINGS	PROPOSED
①	T-HANGAR	⑦
②	CONVENTIONAL HANGAR	⑧
③	CONVENTIONAL HANGAR	
④	FUEL TANKS	
⑤	ARRIVALS BUILDING	TO BE REMOVED
	SRE/ARRIVALS BUILDING	⑥

LEGEND	EXISTING	PROPOSED
AIRPORT PROPERTY LINE	---	N/A
ABUTTERS' PROPERTY LINE	---	N/A
AIRPORT PAVEMENT	====	====
BUILDINGS	[Hatched Box]	[Hatched Box]
25' CONTOUR	---1825---	N/A
ROADS	====	N/A
TREELINE	~~~~	N/A
AIRPORT REFERENCE POINT	N/A	⊕
RUNWAY SAFETY AREA (RSA)	---	--- RSA ---
RUNWAY OBSTACLE FREE ZONE (OFZ)	---	--- OFZ ---
RUNWAY OBJECT FREE AREA (ROFA)	---	--- ROFA ---
BUILDING RESTRICTION LINE (BRL)	---	--- BRL ---
RUNWAY PROTECTION ZONE	---	---



Stantec Consulting Services Inc.  
22 Free Street, Suite 205  
Portland ME U.S.A.  
04101-3900  
Tel. 207.775.3211  
Fax. 207.775.6434  
www.stantec.com

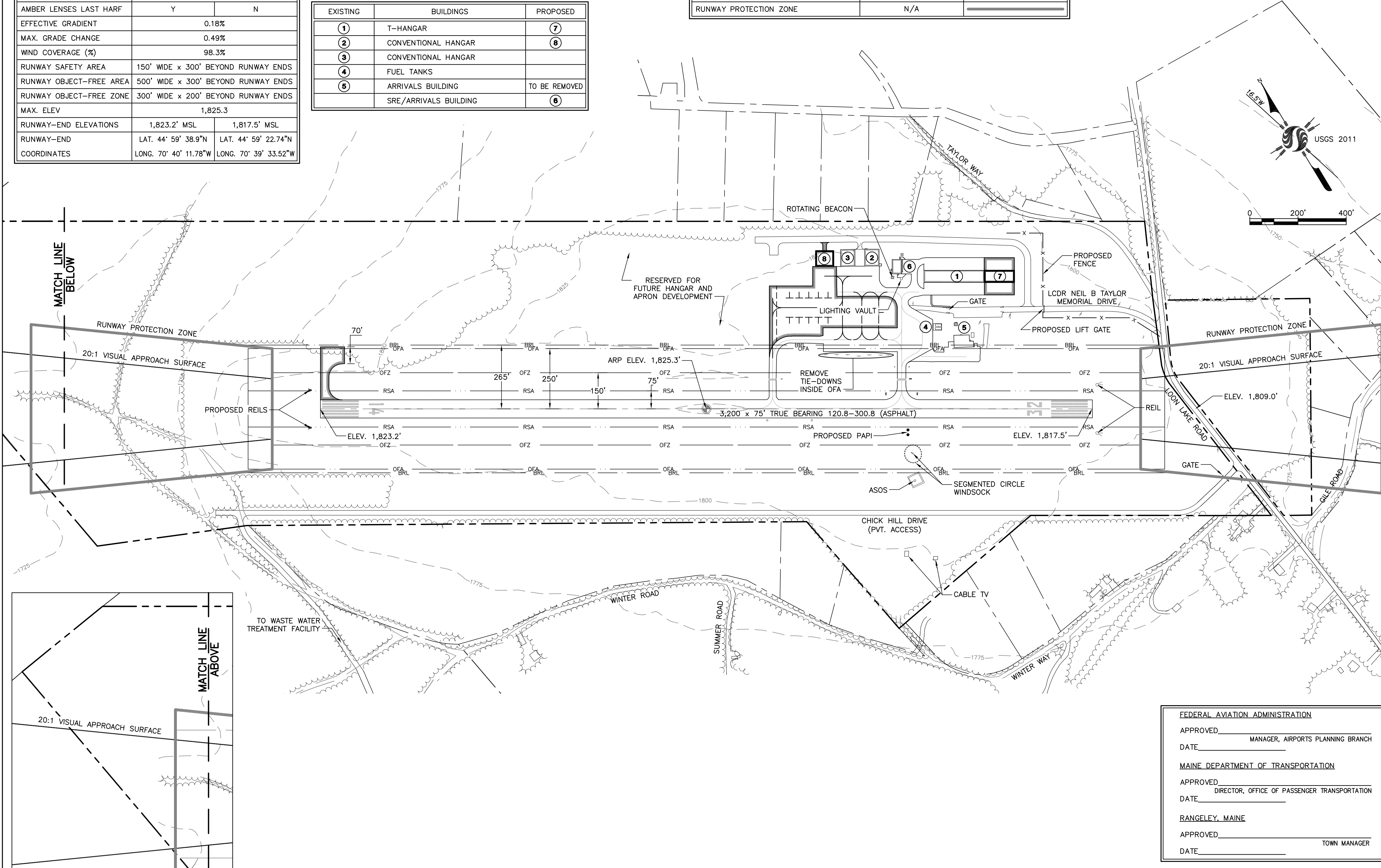
Copyright Reserved

The Contractor shall verify and be responsible for all dimensions. DO NOT scale the drawing - any errors or omissions shall be reported to Stantec without delay.  
The Copyrights to all designs and drawings are the property of Stantec. Reproduction or use for any purpose other than that authorized by Stantec is forbidden.

Consultants

Legend

Notes



Revision	By	Appd.	YY.MM.DD

Issued	By	Appd.	YY.MM.DD

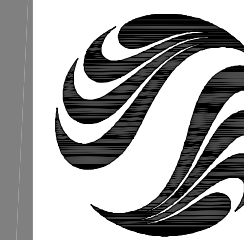
File Name: SHL\_03\_UALP.dwg LRK ECD ECD 10.10.01  
Dwn. Chkd. Dsgn. YY.MM.DD

Permit-Seal

Client/Project  
**STEVEN A. BEAN MUNICIPAL AIRFIELD**  
A.I.P 3-23-0049-11-2011  
**AIRPORT MASTER PLAN UPDATE**  
RANGELEY, MAINE  
Title  
**ULTIMATE AIRPORT LAYOUT PLAN**

Project No.	Scale	Revision
195210450	1" = 200'	
Drawing No.	Sheet	Revision

FEDERAL AVIATION ADMINISTRATION  
APPROVED \_\_\_\_\_  
DATE \_\_\_\_\_ MANAGER, AIRPORTS PLANNING BRANCH  
  
MAINE DEPARTMENT OF TRANSPORTATION  
APPROVED \_\_\_\_\_  
DATE \_\_\_\_\_ DIRECTOR, OFFICE OF PASSENGER TRANSPORTATION  
  
RANGELEY, MAINE  
APPROVED \_\_\_\_\_  
DATE \_\_\_\_\_ TOWN MANAGER



Stantec Consulting Services Inc.  
 22 Free Street, Suite 205  
 Portland ME U.S.A.  
 04101-3900  
 Tel. 207.775.3211  
 Fax. 207.775.6434  
 www.stantec.com

**Stantec**

Copyright Reserved  
 The Contractor shall verify and be responsible for all dimensions. DO NOT scale the drawing - any errors or omissions shall be reported to Stantec without delay.  
 The Copyrights to all designs and drawings are the property of Stantec. Reproduction or use for any purpose other than that authorized by Stantec is forbidden.

Consultants

Legend

Notes

Revision By Appd. YY.MM.DD

Issued By Appd. YY.MM.DD

File Name: SHI\_04\_terminal.pln.dwg LRK ECD ECD 10.10.01  
 Dwn. Chkd. Dsgn. YY.MM.DD

Permit-Seal

Client/Project

STEVEN A. BEAN MUNICIPAL AIRFIELD  
 A.I.P 3-23-0049-11-2011

AIRPORT MASTER PLAN UPDATE

RANGELEY, MAINE

Title  
**TERMINAL AREA PLAN**

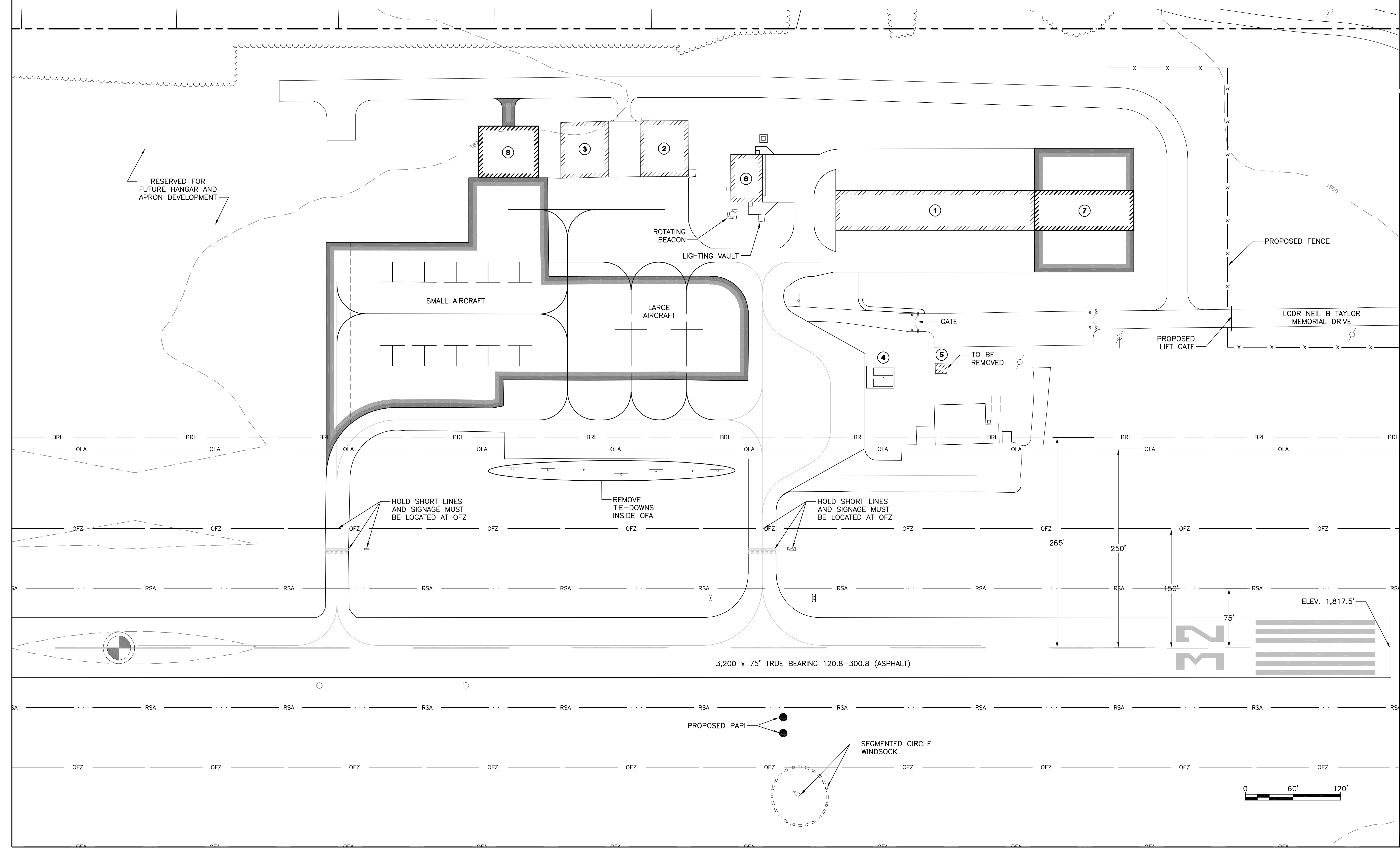
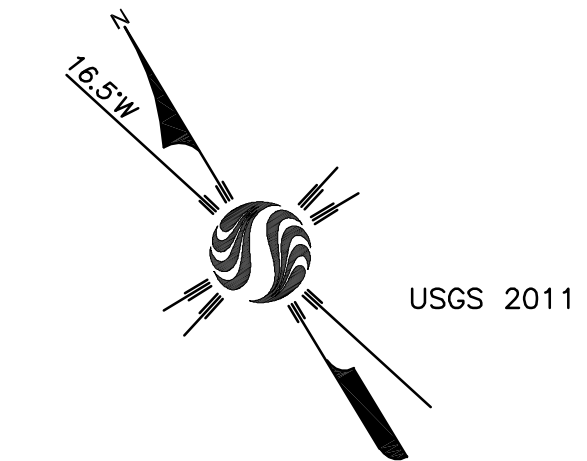
Project No. 195210450 Scale 1" = 60'

Drawing No. Sheet Revision

4 of 7 0

LEGEND	EXISTING	PROPOSED
AIRPORT PROPERTY LINE	---	N/A
ABUTTERS' PROPERTY LINE	---	N/A
AIRPORT PAVEMENT	---	---
BUILDINGS	[Hatched Box]	[Hatched Box]
25' CONTOUR	---1825---	N/A
ROADS	---	N/A
TREELINE	~~~~~	N/A
AIRPORT REFERENCE POINT	N/A	⊕
RUNWAY SAFETY AREA (RSA)	N/A	--- RSA ---
RUNWAY OBSTACLE FREE ZONE (OFZ)	N/A	--- OFZ ---
RUNWAY OBJECT FREE AREA (ROFA)	N/A	--- ROFA ---
BUILDING RESTRICTION LINE (BRL)	N/A	--- BRL ---
RUNWAY PROTECTION ZONE	N/A	---

EXISTING	BUILDINGS	PROPOSED
①	T-HANGAR	⑦
②	CONVENTIONAL HANGAR	⑧
③	CONVENTIONAL HANGAR	
④	FUEL TANKS	
⑤	ARRIVALS BUILDING	TO BE REMOVED
	SRE/ARRIVALS BUILDING	⑥



V:\195210450\1952\_AIP\_Eshbtl\_AurRangeley\_ME\shd\RevSHI\_04\_terminal.pln.dwg Layout1 4/12/2012 2:02:22 PM Ming\_pj\_12\_rev01.rvt



Stantec Consulting Services Inc.  
 22 Free Street, Suite 205  
 Portland ME U.S.A.  
 04101-3900  
 Tel. 207.775.3211  
 Fax. 207.775.6434  
 www.stantec.com

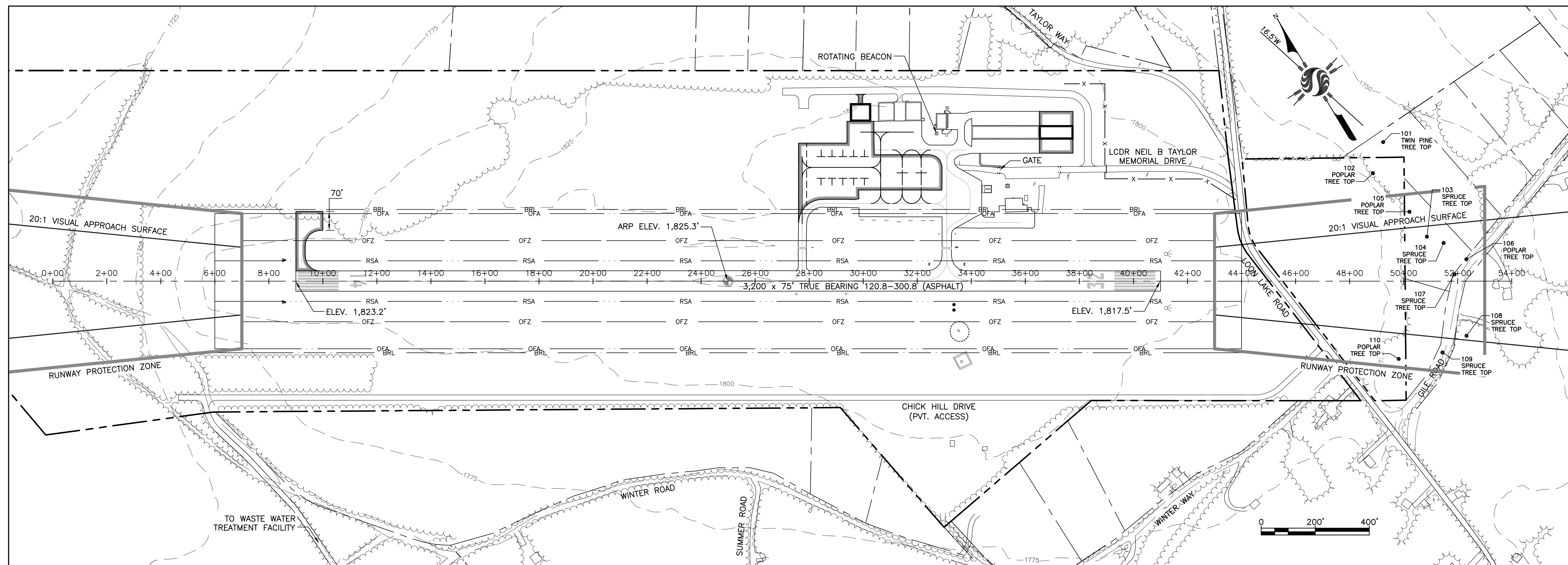
Copyright Reserved

The Contractor shall verify and be responsible for all dimensions. DO NOT scale the drawing -- any errors or omissions shall be reported to Stantec without delay.  
 The Copyrights to all designs and drawings are the property of Stantec. Reproduction or use for any purpose other than that authorized by Stantec is forbidden.

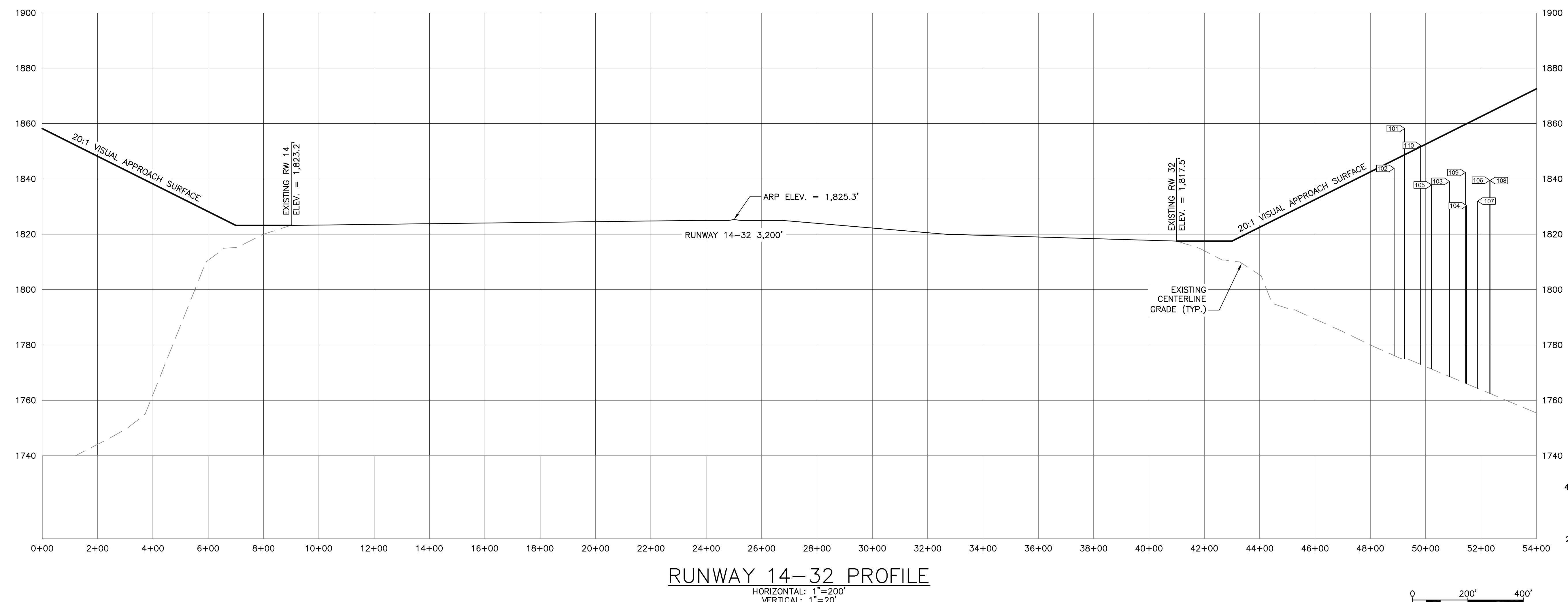
Consultants

Legend

Notes



RUNWAY 14-32 PLAN  
 1"=200'



RUNWAY 14-32 PROFILE  
 HORIZONTAL: 1"=200'  
 VERTICAL: 1"=20'

Revision	By	Appd.	YY.MM.DD

Issued: By Appd. YY.MM.DD

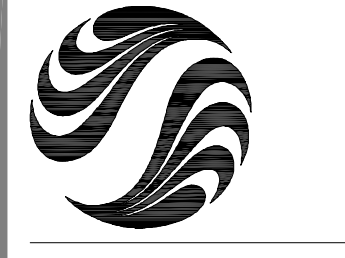
File Name: SHL\_05\_pln\_n\_profile.dwg LRK ECD ECD 10.10.01  
 Dwn. Chkd. Dagn. YY.MM.DD

Permit-Seal

Client/Project  
 STEVEN A. BEAN MUNICIPAL AIRFIELD  
 A.I.P 3-23-0049-11-2011  
 AIRPORT MASTER PLAN UPDATE  
 RANGELEY, MAINE

Title  
 RUNWAY 14-32 APPROACH  
 PLAN AND PROFILE

Project No. 195210450 Scale AS SHOWN  
 Drawing No. Sheet Revision



Stantec Consulting Services Inc.  
 22 Free Street, Suite 205  
 Portland ME U.S.A.  
 04101-3900  
 Tel. 207.775.3211  
 Fax. 207.775.6434  
 www.stantec.com

Copyright Reserved

The Contractor shall verify and be responsible for all dimensions. DO NOT scale the drawing - any errors or omissions shall be reported to Stantec without delay.  
 The Copyrights to all designs and drawings are the property of Stantec. Reproduction or use for any purpose other than that authorized by Stantec is forbidden.

Consultants

Legend

Notes


Revision	By	Appd.	YY.MM.DD

Issued	By	Appd.	YY.MM.DD

File Name:	SHL_06_FP77.pln.dwg	LRK	ECD	ECD	10.10.01
		Dwn.	Chkd.	Dagn.	YY.MM.DD

Permit-Seal

Client/Project

STEVEN A. BEAN MUNICIPAL AIRFIELD  
 A.I.P 3-23-0049-11-2011

AIRPORT MASTER PLAN UPDATE

RANGELEY, MAINE

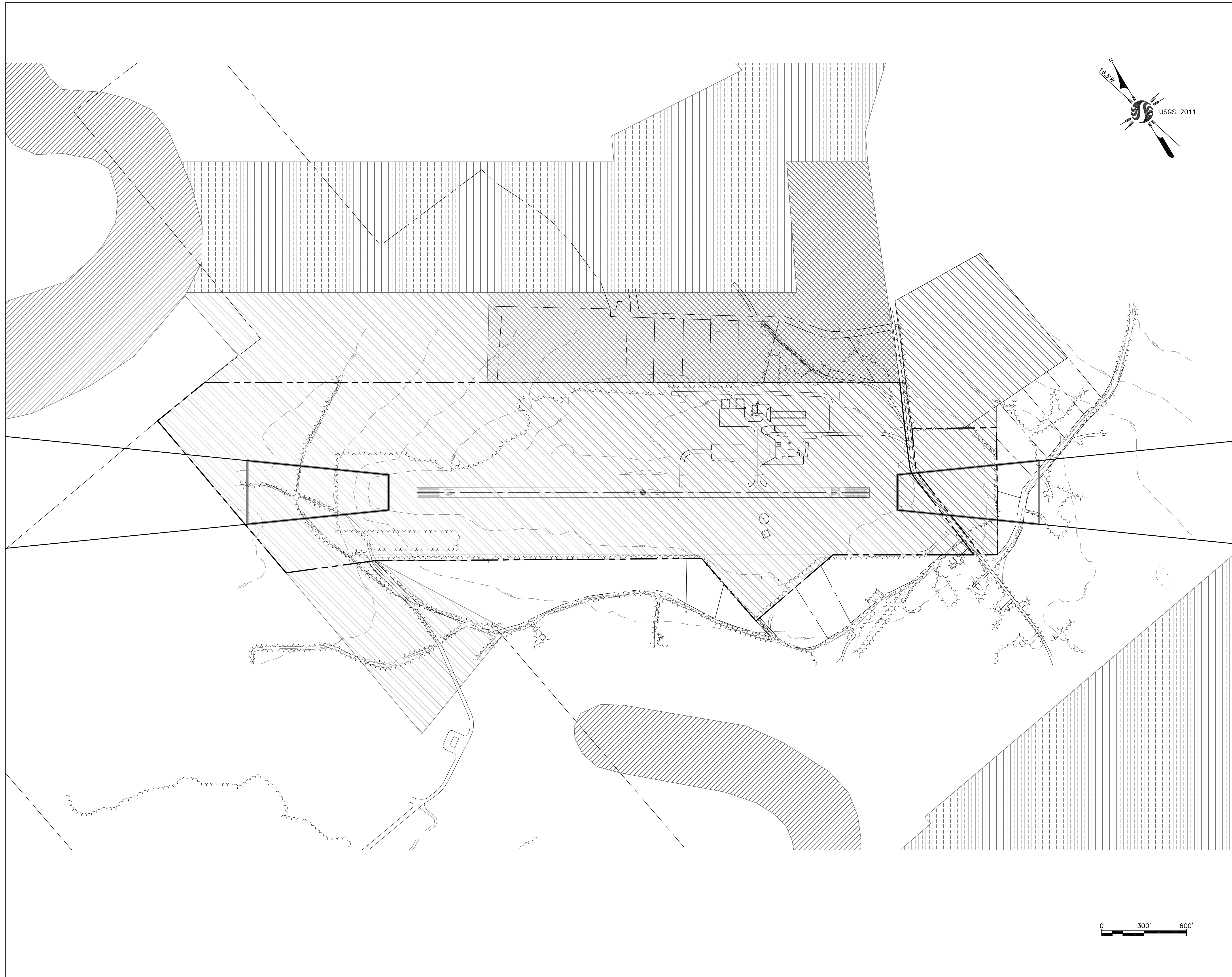
Title

FAR PART 77 IMAGINARY SURFACES PLAN

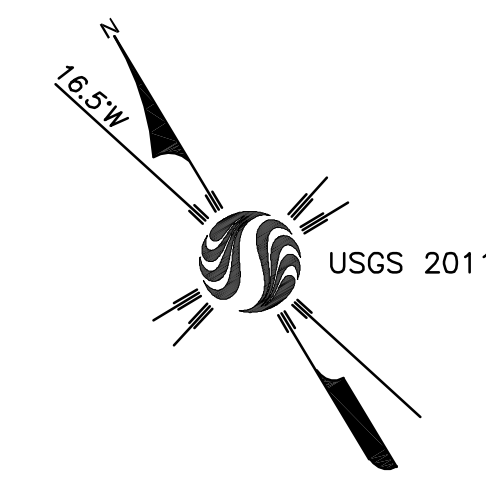
Project No.	Scale
195210450	1" = 1000'

Drawing No.	Sheet	Revision

V:\195210450\1952\_A.I.P.\_Eshbitt\_AirRangeley\_Me\Sheet\_Revised\_Sht\_06\_FP77.pln.dwg, Layout1, 4/12/2012 2:02:31 PM, hking, ps, 0, nwd1.plt



Stantec Consulting Services Inc.  
 22 Free Street, Suite 205  
 Portland ME U.S.A.  
 04101-3900  
 Tel. 207.775.3211  
 Fax. 207.775.6434  
 www.stantec.com



Copyright Reserved

The Contractor shall verify and be responsible for all dimensions. DO NOT scale the drawing - any errors or omissions shall be reported to Stantec without delay.  
 The Copyrights to all designs and drawings are the property of Stantec. Reproduction or use for any purpose other than that authorized by Stantec is forbidden.

Consultants

Legend

- RESIDENTIAL ZONING
- SHORELAND ZONING
- INDUSTRIAL ZONING
- COMMERCIAL ZONING
- WOODLAND ZONING

Notes

Revision	By	Appd.	YY.MM.DD

Issued	By	Appd.	YY.MM.DD

File Name: SH_07_Ind_use_pln.dwg	LRK	ECD	ECD	10.10.01
	Dwn.	Chkd.	Dsgn.	YY.MM.DD

Permit-Seal

Client/Project

STEVEN A. BEAN MUNICIPAL AIRFIELD  
 A.I.P 3-23-0049-11-2011

AIRPORT MASTER PLAN UPDATE

RANGELEY, MAINE

Title

LAND USE PLAN

Project No. 195210450	Scale 1" = 300'
--------------------------	--------------------

Drawing No.	Sheet	Revision

V:\195210450\1952\_AIP\_Eshba\_AirRangeley\_Me\sheet\_Rangeley\_SitePlan.dwg, 4/12/2012 2:02:34 PM, khang, ps\_id\_rev01.rvt